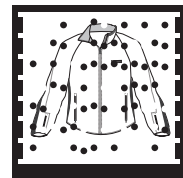


## Instructions for Installing Battery Harness

**Read through all these instructions BEFORE starting**

**(Do not use a Battery Tender Harness to Power Heated Clothing!!!)**

1. Turn Off the Vehicle, Generator or Any Charging source for the Battery
2. At the Battery,
  - a. First Disconnect the Ground (-) Cable from the Battery
  - b. Then Disconnect the Plus (+) Cable from the Battery
3. Attach the positive ring terminal from the battery harness to the positive terminal on the battery. The positive ring terminal can be distinguished from the negative by the fact that it has a fuse attached to the Wire. Reattach the bolt to the battery and tighten.
4. Attach the negative ring terminal from the battery harness to the negative terminal on the battery. The negative ring terminal can be distinguished from the positive by the fact that it does NOT have a fuse attached to the Wire. Reattach the bolt to the battery and tighten.
5. Secure the wire harness with cable straps. Be certain the wire harness and all cords are not pinched. The connecting plug should be easily accessible but clear of all moving parts.
6. Test the Connection! Plug the Receiver to the Battery Harness, if you have the "Power In" polarity reversed, then the Red LED will become Non-flashing Yellow in color.



**CAUTION:** It is possible to overload your charging system by adding too many electrical accessories. If your combined accessories use more electrical current than your charging system can produce, the consumption can discharge the battery leading to electric system damage. Ask your dealer for advice.

## Getting the Heat-troller Receiver & Remote to Talk to Each Other

1. It is easier if you do this before installing the Receiver in the Liner. Make sure the receiver is unplugged from Power.
2. Using either Knob, Turn the Remote on and then off 3 times, 6 clicks, allowing the LED to light between each click. You should end with the switch in the Off position. (if the switch was turned on/off already at any time and not left on to clear the counter, it can affect the count)
3. The LED on the Remote will start double-blinking This mode lasts about 10 sec. If you turn it on/off one more time, it will end the sync mode.
4. While the Remote is double-blinking, plug in the Receiver to power. You only have 10 seconds to plug it to Power while the LEDs are double Blinking. The units will pair up automatically and you will know that they are paired when the heat to the liner stops if you left the switch in the off position. Once Synced you should never have to do it again.



## Use Instructions for the Remote Control

1. Once you have Synced the Remote Control, it works just like the other Heat-trollers.
2. On the Dual Remote, Turn the RED Knob on to start power to the Liner, Yellow to the Secondary Item.
3. In order to extend the Remote Control Battery Life, the LED only turns on when the switch is moved. It will stay on for about a second after you move the switch, Unless the battery is getting low. In this case, it will double blink after you move the switch.
4. The Battery should last a season and is replaced by removing the screws that hold the lid in place. The batteries are 2 AAA batteries.

it is not about where you are  
but about where you are going!



Designed and Manufactured by  
**Warm & Safe Heated Gear, LLC**

***For Use with All Heated Apparel***

***REMOTE HEAT-TROLLER™***

## **Wireless Heat-troller & Remote Control**

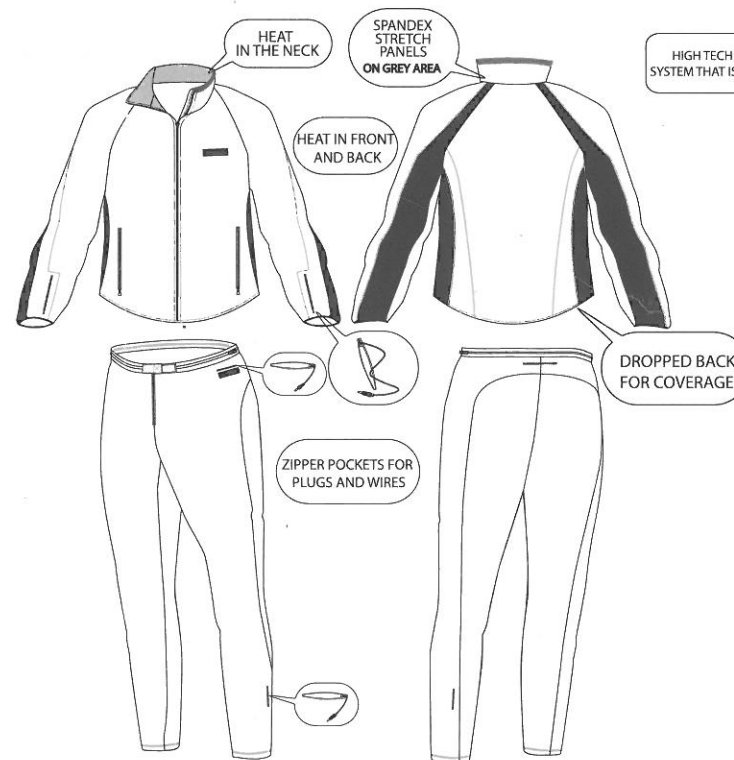
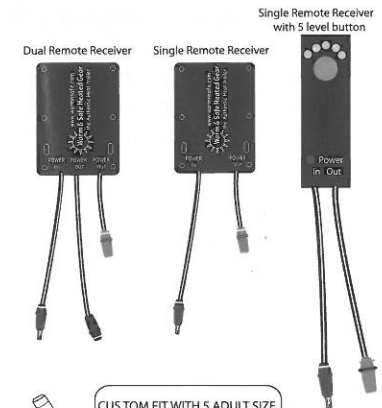
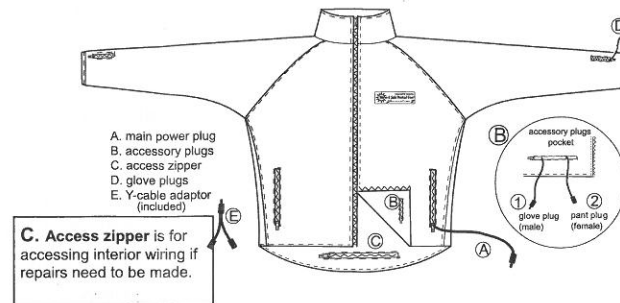
### **Features:**

- Small Single or Dual Remote Control with power adjustment capability from 3% to 100%
- The Remote Control is easily synced to the Receiver
- JIC Support Turns the Dual Receiver on 1/3 power so that even if the Remote Control is Lost the Heat Still Flows. The Single Receiver has a Button to control heat if you lose the Remote.
- Red LED on the Receiver indicates that unit is connected to power correctly and Yellow LED indicates the polarity is reversed
- LED on remote for Feedback
- Receiver unit is waterproof and can be left in liner when laundered by hand. Please refer to care instructions located in the liner.
- Solid State, High Tech, Safe & Reliable Electronics designed by us
- Fits comfortably into the palm of the hand or pocket or on the Bike or Scooter or Horse or Small Airplane or just about anywhere!
- Battery harness made of automotive grade wire that is resistant to oil, acid, water and grime with automotive style fuse
- Plug compatible with most DC heated products
- Handles 15 amps at 13 volts with internal reset for overloads & shorts & works from 7 volt to 24 volt
- Recommended for All Heated Clothing



Designed and Manufactured by  
**Warm & Safe Heated Gear, LLC**

it is not about where you are but about where you are going!



## **Instructions for Installing Battery Harness:**

### **Read through all these instructions BEFORE starting**

**(Do not use a Battery Tender Harness to Power Heated Clothing!!!)**

1. Turn Off the Vehicle, Generator or Any Charging source for the Battery
2. At the Battery,
  - a. First Disconnect the Ground (-) Cable from the Battery
  - b. Then Disconnect the Plus (+) Cable from the Battery
3. Attach the positive ring terminal from the battery harness to the positive terminal on the battery. The positive ring terminal can be distinguished from the negative by the fact that it has a fuse attached to the Wire. Reattach the bolt to the battery and tighten.
4. Attach the negative ring terminal from the battery harness to the negative terminal on the battery. The negative ring terminal can be distinguished from the positive by the fact that it does NOT have a fuse attached to the Wire. Reattach the bolt to the battery and tighten.
5. Secure the wire harness with cable straps. Be certain the wire harness and all cords are not pinched. The connecting plug should be easily accessible but clear of all moving parts.
6. Test the Connection! Plug the Receiver to the Battery Harness, The Red LED on the Receiver should turn on and the Yellow LED should stay off. If the Polarity is Reversed, the Red LED will be off and the Yellow will be On.

**CAUTION:** It is possible to overload your charging system by adding too many electrical accessories. If your combined accessories use more electrical current than your charging system can produce, the consumption can discharge the battery leading to electric system damage. Ask your dealer for advice about the amount of current consumed by additional electrical accessories.

### **Getting the Heat-troller Receiver & Remote to Talk to Each Other:**

1. Before installing the Receiver in the Liner. Leave the Receiver unplugged from Power.
2. Using only one Knob, Turn the Remote on and then off Quickly 3 times, 6 clicks, allowing the LED to light between each click. You should end with the switch in the Off position. 3 on/off's, you will hear 6 clicks!
3. The LED on the Remote will start double-blinking and you won't be able to stop it even with the switch in the off position. This mode lasts about 10 seconds.
4. While the Remote is double-blinking, plug in the Receiver to power. Do this quickly because you only have 10 seconds to plug it to Power While the LEDs are double Blinking. The units will pair up automatically and you will know that they are paired when the heat to the liner stops if you left the switch in the off position. Once Synced you should never have to do it again.

### **Use Instructions for the Remote Control**

1. Once you have Synced the Remote Control, it works just like the other Heat-trollers.
2. On the Dual Remote, Turn the RED Knob on to start power to the Liner, Yellow to the Secondary Item. On the Single Remote, the Single Knob Controls it all.
3. In order to extend the Remote Control Battery Life, the LED only turns on when the switch is moved. It will stay on for about a second after you move the switch, Unless the battery is getting low. In this case, it will blink after you move the switch.
4. The Battery should last a season and is replaced by removing the screws that hold the lid in place. The battery is a CR2032 and is available anywhere coin-cell batteries are sold.

**The O-Ring and the Knob:** There is an O-ring under the knob. You can loosen the knob and adjust the o-ring to make the knob turn harder or softer! If the knob turns to tight then adjust the o-ring.

### **Installing Your Heat-troller Receiver in the Pocket of the Pocket**

1. In our Generation 4 Liners, there is a pocket in the Left "Hand" Pocket that is designed to store the Receiver. Once installed you never have to remove it if you follow proper care instructions.
2. Looking at the Pocket in the Pocket, the Receiver goes into that Pocket from the top with the wires going out the Bottom of that Pocket. (drawing with the liner instructions)
3. Once in the Pocket, Attach the Grey Jack to the Main Power Plug in the Liner Pocket. The Grey Jack from the receiver is for powering the Liner and any other items attached to the Liner Power.
4. Locate the buttonhole in the lower inside corner of the hand pocket and another buttonhole inside the accessory pocket (small zippered pocket) in the inside lower left lining. You will need to Take the Cable with the Black Jack and push it through the button holes from the hand pocket into the accessory pocket so that the Jack exits into the Little Zippered Pocket. This will allow you to control whatever items you want to control separately.
5. After you Sync the heat-troller and you want to use it, Connect the Red Plug from the Receiver to the Battery Harness or DC power Source. The Red LED on the Receiver should turn on (only for 40 sec) and the Yellow LED should stay off. If the Polarity is Reversed, the Red LED will be off & the Yellow will stay On.
6. **AS A SAFTY FEATURE**, every time the Receiver is plugged to power, it will turn on to 1/3 power until you turn the Remote control on. Once the Remote is turned on, the Receiver is now controlled by the Remote. So if you want no heat, turn the Remote to Off.

### **Installation Instructions for Older Liners & other brands**

1. Just plug the Grey connector of the receiver to the main power plug in the left "hand" pocket of the liner. If You Buy The Dual, You can try to make a hole, very carefully, between the "hand" pocket and the Small Zippered Pocket to get the Black connector to the Glove & Pants plugs.
2. Put the receiver into the pocket. Plug the Red plug of the Receiver to the power source. The Red LED on the Receiver should turn on (only for 40 sec).
3. Using the Remote Heat-troller with clothing made by another company, you need to be a little more inventive but we are sure you can figure it out.

### **Warranty Information**

If this unit fails due to faulty parts, design or manufacturing within 3 YEARS of your purchase we WILL replace or fix it. BUT All warranties will be voided IF the following guidelines are not followed:

- ✓ Do not cut any of the Wires or Connectors!
- ✓ Only use the battery harness, cigarette plug adaptor, or BMW power port adaptor **MADE BY US** to power your Heat-troller! Attempting to use a home-made BMW or cigarette plug adaptor will void the warranty.
- ✓ The Heat-troller should be installed in accordance with the enclosed instructions. We are not responsible for units damaged by incorrect installation, improper use or shorts in the clothing made by others.

For all issues, contact us [www.warmnsafe.com](http://www.warmnsafe.com) or [info@warmnsafe.com](mailto:info@warmnsafe.com) or call +1(702)357-8664

Designed & Manufactured By Warm & Safe Heated Gear, LLC

# FCC Warning statement

## a. for FCC 15b devices (15.105)

This equipment has been tested and found to comply with the limits for a Class B digital device, pursuant to part 15 of the FCC rules. These limits are designed to provide reasonable protection against harmful interference in a residential installation. This equipment generates, uses and can radiate radio frequency energy and, if not installed and used in accordance with the instructions, may cause harmful interference to radio communications. However, there is no guarantee that interference will not occur in a particular installation. If this equipment does cause harmful interference to radio or television reception, which can be determined by turning the equipment off and on, the user is encouraged to try to correct the interference by one or more of the following measures:

- Reorient or relocate the receiving antenna.
- Increase the separation between the equipment and receiver.
- Connect the equipment into an outlet on a circuit different from that to which the receiver is connected.
- Consult the dealer or an experienced radio/TV technician for help.

## b. FCC Part 15.21 information for user

You are cautioned that changes or modifications not expressly approved by the party responsible for compliance could void your authority to operate the equipment.

## c. FCC Part 15.19

This device complies with Part 15 of the FCC Rules. Operation is subject to the following two conditions: (1) this device may not cause harmful interference and (2) this device must accept any interference received, including interference that may cause undesired operation