

Phoneographer P1S  
OPERATING INSTRUCTIONS

请根据手机系统版本选择不同的二维码进行扫描安装APP  
Please scan the appropriate QR code according to  
the operating system of your mobile phone



Android 应用宝



Android google

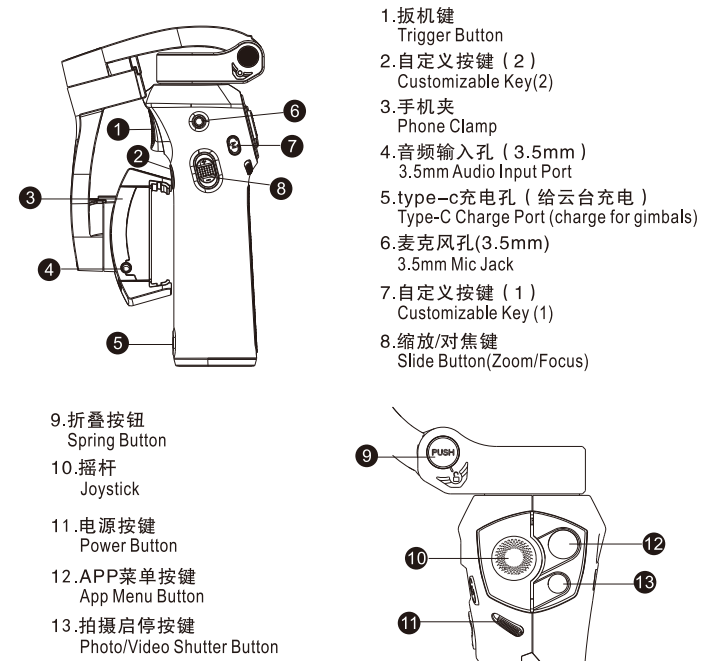


Apple Store

Thank you for making BENRO your choice for professional photographic equipment. Your BENRO gear is manufactured to provide years of dependable service. In order to obtain optimum satisfaction and performance, we suggest that you carefully read these instructions.

感谢您选用百诺专业摄影器材，百诺产品提供值得您信赖的售后服务。为了让您对百诺产品的使用更加满意，我们建议您仔细阅读下面的使用说明。

部件名称 Name of Components



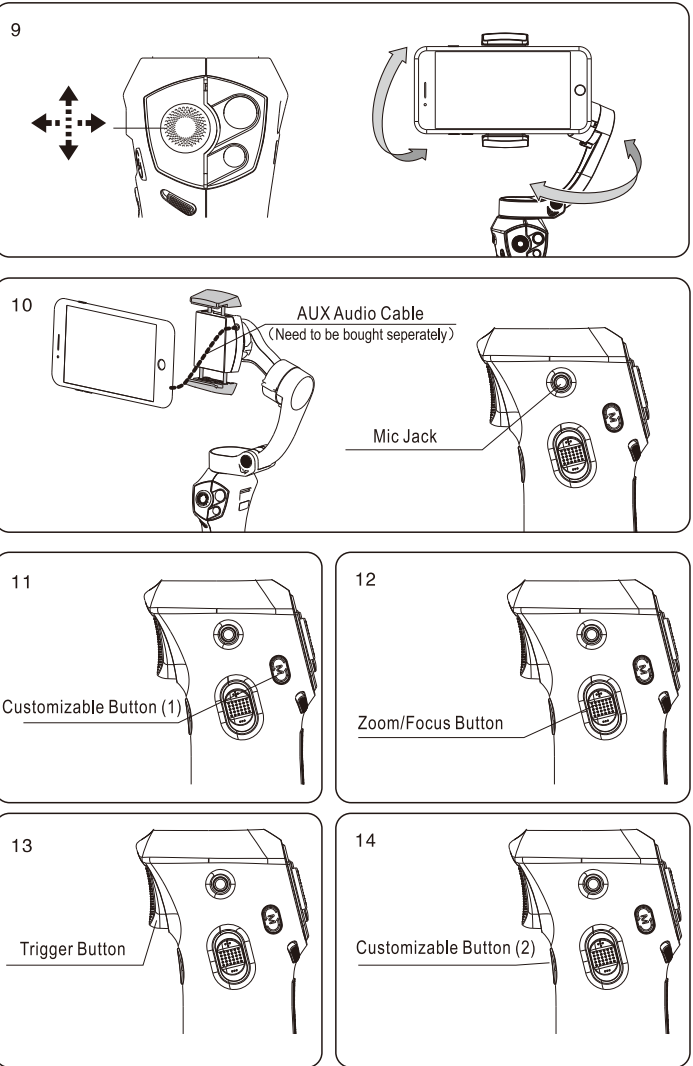
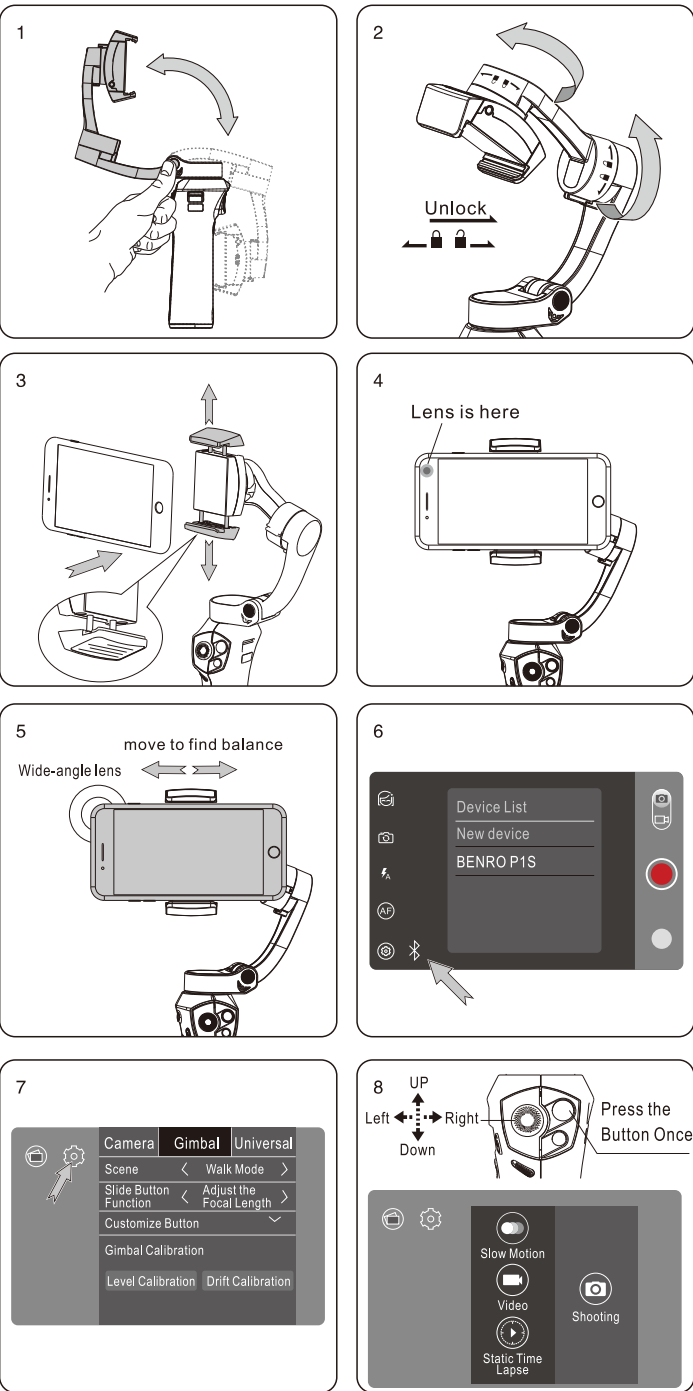
P1S 使用视频二维码 QR codes for P1S operation videos



中文视频

包装清单: Packgae Contents

P1S主机	1PC
P1S Gimbal	
USB转type-c接口稳定器充电线	1PC
Charge Cable for the Gimbal	
收纳袋	1PC
Storage Bag	
迷你三脚架	1PC
Mini Tripod	



OPERATING INSTRUCTIONS

**Open the Gimbal (Figure 1, 2)**  
1. Press the spring button to unlock the rotatable arm. Pull the rotatable arm upwards until it locks into the upright position.  
2. Rotate the tilt motor and roll motor following the unlock signs direction arrows. If it is fully open and unlocked the gimbal can be rotated freely in all 3 axis.

**Mount and Adjust the Mobile Phone (Figure 3, 4, 5)**  
1. Hold the phone clamp with the sticker downwards, and then extend the clamp to mount the mobile phone. Please center the mobile phone for best operation.  
Note: the phone camera lens should be at the left side of the gimbal making sure the camera is not blocked by the arm.  
2. If a third party wide angle lens is mounted, the mobile phone needs to be adjusted left and right to center the phones center of gravity (balance) between the motors.

**Bluetooth Connection (figure 6)**  
1. Download the APP of the gimbal and make sure both the phone Bluetooth and shared location are open. Open the operation interface of the APP, and then click the Bluetooth icon on the operation interface and find Bluetooth named "BENRO P1" to connect with the gimbal.

**Gimbal Calibration (Figure 7)**  
1. Calibrate the gimbal before your first use, or if the gimbal becomes out of balance or after you re-mount the phone.  
2. Put the gimbal on the flat table. Click "setting" on APP interface, and then select "Gimbals". The "level calibration" and "drift calibration" are shown on the screen. Perform "drift calibration" first and then proceed to the "level calibration".  
Note: please do not move the gimbal during the calibration process, or it will adversely affect the calibration function.

**APP Menu Button (Figure 8)**  
1. Click the APP menu button once to show the photo and video selection menu. Move the joystick left and right to select photo or video. Move the joystick up and down to select different functions of photo or video. Press the "Shooting on/off button" to start shooting in the selected mode.

**The Joystick (Figure 9)**  
1. Move the joystick left and right to adjust the pan angle of the gimbal. Move the joystick up and down to adjust the tilt angle.

**External Microphone (Figure 10)**  
1. Use the AUX audio cable to connect the phone earphone (audio output) hole and the audio input hole on the phone clamp. And then install the microphone into the mic jack of the gimbal.  
Note: the AUX Audio Cable needs to be bought seperately.

**Customizable Button (1) (Figure 11)**  
1. At the factory the gimbal is set to the default status, a short press of the button will rotate the phone 90 degrees for vertical shooting. A long press of the button to perform 180 degree pan exchange.

**Zoom/Focus Button (Figure 12)**  
1. This button can control the zoom and focus of the phone camera. The two functions can be switched by clicking "setting" on the app interface then select "gimbal" and then "customize button".

**Trigger Button (Figure 13)**  
1. Quickly press the trigger button twice to return to the original status.  
2. A long press of the trigger button will put it into lock mode to hold the lens direction.  
3. Quickly press the trigger button twice and hold the trigger button down will put the gimbal into the quick follow status.

**Customizable Button (2) (Figure 14)**  
1. A long press will change the gimbal mode. Green light indicates: all follow mode; Blue light indicates: pan follow model.

使用方法(简体中文)

**打开稳定器：（如图 1、2 所示）**  
1. 首先按下折叠按钮，将旋转臂解锁，然后将旋转臂往上提，即可以打开稳定器。反之即折合稳定器。  
2. 按丝印图标所示，向解锁图标方向分别转动俯仰电机与横滚电机，将锁扣解开，此时云台可以自由转动，稳定器完全打开。

**手机的安装与调节：（如图 3、4、5 所示）**  
1. 将手机支架有铭板贴的一面朝下，然后拉伸手机支架，将手机装入手机支架并居中。  
注：安装时将手机摄像头置于云台的左侧，以免摄像头被遮挡。  
2.如有安装第三方手机广角镜头，需左右移动手机，将手机重心尽量位于电机中心。

**蓝牙连接：（如图 6 所示）**  
1. 先下载稳定器的手机APP，确保手机的蓝牙与共享位置处于打开状态，打开软件的操作界面，点击操作界面的蓝牙图标，找到蓝牙名称“BENRO P1S”点击即可以与稳定器链接。

**云台校准：（如图 7 所示）**  
1. 第一次使用云台或当安装手机后手机与地面不平衡时请进行云台校准。  
2. 先将云台放置于水平桌面上，点击手机APP界面上的“设置”再点“云台”选项，这时我们可以看到“水平校准”与“漂移校准”，先执行“漂移校准”再进行“水平校准”。  
注：当云台进行校准时，请勿移动云台，这样会影响校准功能。

**APP菜单按键：（如图 8 所示）**  
1. 单击APP菜单按键，即可调出摄影与摄像选择菜单，左右拨动摇杆可以选择摄影或摄像，上下拨动摇杆可以选择摄影或摄像的各项功能，选择完毕按“拍摄启停按键”确认即可进行拍摄。

**摇杆的使用：（如图 9 所示）**  
1. 在拍摄时摇杆的左右拨动，可以调节云台的水平角度。摇杆的上下拨动，可以调节云台的俯仰角度。

**外接麦克风：（如图 10 所示）**  
1. 先将手机的耳机孔与手机支架的音频输入孔用AUX音频线链接。然后再把麦克风装入稳定器的麦克风孔上，即安装完成。  
注：AUX音频线需另购。

**自定义按键（1）的使用：（如图 11 所示）**  
1. 出厂默认设置，短按按键，手机可以进行横拍与90°竖拍的切换，长按按键，可以进行水平180°切换。

**缩放/对焦按键的使用：（如图 12 所示）**  
1. 此按键可以控制手机镜头的对焦，也可以控制手机画面的缩放。此两项功能可以在“设置”里选择“云台”选项在“按键自定义”里进行切换设置。

**扳机键的使用：（如图 13 所示）**  
1. 快速按两下扳机键为返回开机时的初始位置。  
2. 长按为锁头模式，即固定镜头的方向。  
3. 快按两下不松手，稳定器可以进行快速跟随。

**自定义按键（2）的使用：（如图 14 所示）**  
1. 长按，模式的切换，绿灯：全跟随模式。蓝灯：水平跟随模式。

参数 Specifications	
云台 Gimbal	
续航时间 Runtime	24小时 24 h
工作电压 Working Voltage	标准 7.4V 7.4V
工作电流 Working Current	90mA ( 重心平衡状态 ) 90mA(center of gravity is under balance status)
工作温度 Working Temperature:	-10 degree ~45 degree Celsius
产品尺寸(W*D*H) Dimensions (W*D*H)	展开：123*73*297(mm) Extended:123*73*297(mm) 收纳：50*106*178(mm) Closed:50*106*178(mm)
机体重量 Weight	440g 440g
俯仰轴机械活动范围 Tilt Axis Mechanical Rotation Range	330° 330 degree
横滚轴机械活动范围 Roll Axis Mechanical Rotation Range	330° 330 degree
水平轴机械活动范围 Pan Axis Mechanical Rotation Range	320° 320 degree
静止姿态跟踪误差 Follow Tolerance at Static Status	± 0.05 ± 0.05
运动姿态跟踪误差 Follow Tolerance at Motion Status	± 0.2 ± 0.2
最大负载重量 The Maximum Payload	290g ( 0.64 lb )
适用手机宽度 Compatible Phone Width	55-90mm
适用手机厚度 Compatible Phone Thickness	≤ 9mm
麦克风接口类型 Mic Jack Type	35mm TRRS
蓝牙版本	4.1
蓝牙频率	2402-2480MHz
电池类型 Battery Type	锂离子电池 Lithium ion Battery
电池型号 Battery Model	SP26350
电池容量 Battery Capacity	2000mAh
充电时长 Charging Time	3h ( 充电功率10W) 3h (Charging Power 10W)

百诺保留随时变更设计及说明书内资料权利，恕不另行通知。

**注意事项：**  
 使用此产品时，请不要超过规定的最大承重（详细参数请参考产品吊卡或者百诺官网。）  
 使用此产品时，为了避免意外损坏设备，在安装设备之前，请务必确认产品的各个锁紧系统处于安全状态。  
 请勿在零下10度或高于零上45度的温度下使用本产品。  
 在潮湿，泥沙，风尘等环境中使用过后，一定要把藏有泥沙的部分清除干净，可使用无水酒精，消毒酒精处理。  
 请勿长时间将产品放置在太阳下，避免长时间将产品放置在高温下，例如靠近汽车玻璃数小时。  
 为了人身安全，使用本产品时，请勿靠近高压电区域，或与强效化学接触。

**保修范围**  
您所使用的百诺产品是经过精密加工，多项严密质量检测，所有功能严格测试才完整包装出厂的。所有材料或者工艺方面的瑕疵，可以在您所购买的区域免费维修或者更换。所有人为原因所造成的产品损坏不在保修范围内，例如：错误操作，严重摔落，或者电池漏电解质体损坏。  
质量保修可以联系您所在地的经销商，海外代理商详细信息可登陆 [www.benro.com](http://www.benro.com)查询。

**USER NOTICE**  
 Do not exceed the maximum specified load capacity (see specifications on the package label or visit [www.benro.com](http://www.benro.com)).  
 Always ensure the gimbals locks are tightly engaged before mount any gear on your gimbals.  
 Do not use any Gimbals below temperatures of 14°F or above +113°F (~10°C / +45°C).  
 Always clean and dry any gimbals after has been exposed to wet, dusty, sandy or salty conditions. Your gimbals are not recommended for use in water. If required, clean the gimbals using a soft cloth with some no water alcohol.  
 Do not leave any Gimbals in the sun for prolonged periods and avoid high temperature exposure.  
 For your safety, don't let your BENRO gear come in contact with any electrical power source.

**LIMITED WARRANTY COVERAGE**  
Your Benro product has been carefully manufactured, has passed many quality assurance checks and has been thoroughly tested before shipment. It is warranted in the country from which you purchased it based on the date of purchase to the original owner, against defects in materials and workmanship. The warranty does not apply to damages caused by mishandling, dropping, or leaking batteries, nor modification or servicing performed by others. Please contact your local Benro dealer for further information and details about your warranty. To find the Benro distributor in your country, please check the distributor information at Benro official website [www.benro.com](http://www.benro.com).

Specifications and design are subject to change without notice.

低功率電波輻射性電機管理辦法第12、14條  
---經型式認證合格之低功率射頻電機，非經許可，公司、商號或使用者均不得擅自變更頻率，加大功率或變更原設計及功能。  
---低功率射頻電機之使用不得影響飛航安全及干擾合法通信；經發現有干擾現象時，應立即停止使用，並改善至無干擾時方得繼續使用。  
前項合法通信，指依電信法規定作業之無線電通信低功率射頻電機需忍受合法通信或工業、科學及醫療用電波輻射性電機設備之干擾。

FCC INFORMATION  
Note: This equipment has been tested and found to comply with the limits for a Class B digital devise, pursuit to part 15 of the FCC Rules. These limits are designed to provide reasonable protection against harmful interference in a residential installation. This equipment installed and used in accordance with the instructions, may cause harmful interference to radio communications. However, there is no guarantee that interference will not occur in a particular installation. If this equipment does cause harmful interference to radio or television reception, which can be determined by turning the equipment off and on, there user is encouraged to try to correct the interference by one or more of the following measures:  
Reorient or relocate the receiving antenna.  
Increase the separation between the equipment and receiver.  
Connect the equipment into an outlet on a circuit different from that to which the receiver is connected.  
Consult the dealer or an experienced radio/TV technician for help.  
Caution: Any changes or modifications not expressly approved by the party responsible for compliance could void the user’s authority to operate the equipment.  
This device complies with part 15 of the FCC Rules. Operation is subject to the following two conditions:  
1 This device may not cause harmful interference, and 2 this device must accept any interference received, including interference that may cause undesired operation.

Bluetooth Version            V4.1 (BLE mode)  
Frequency Range:            2402-2480MHz