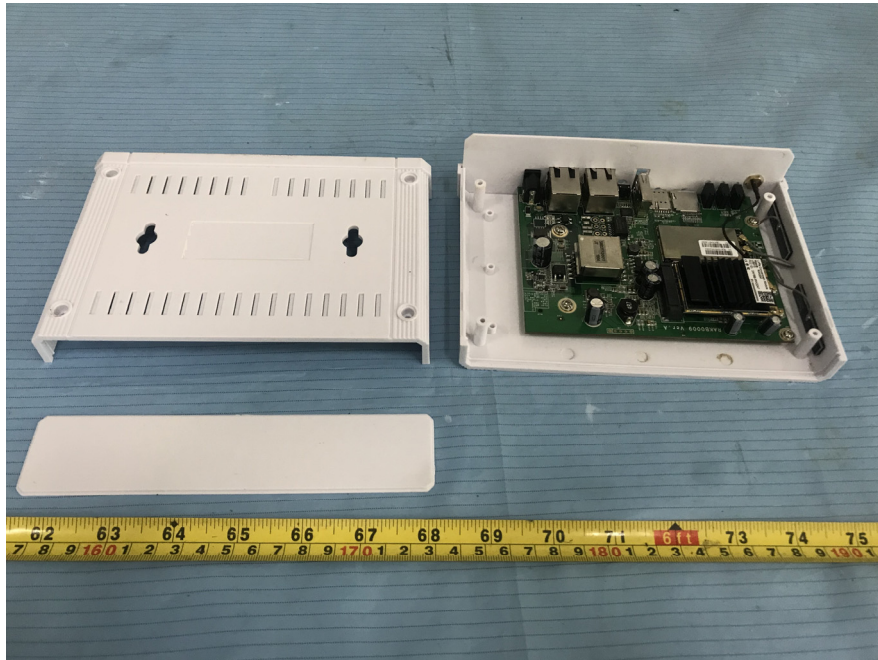
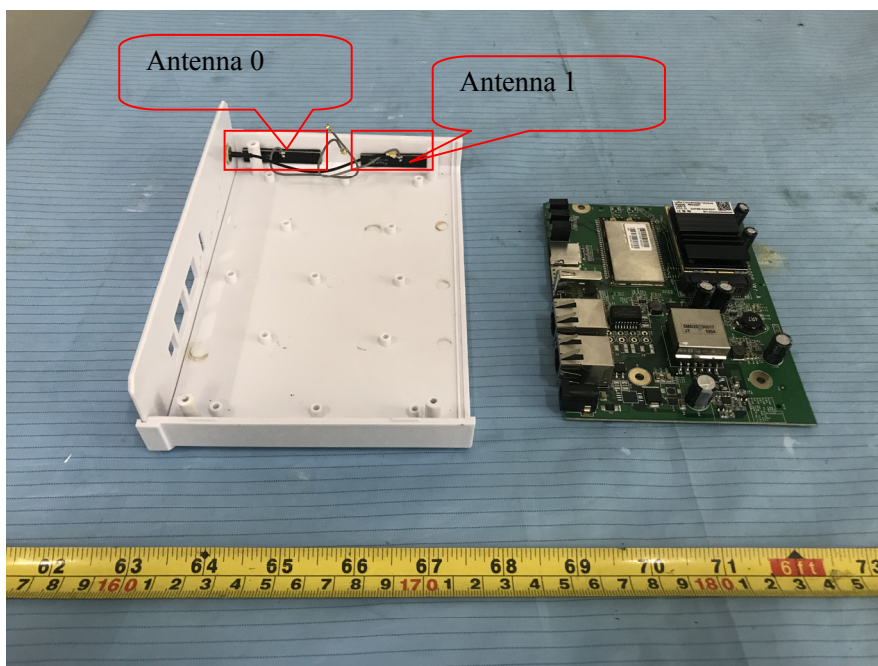


EXHIBIT C - EUT INTERNAL PHOTOGRAPHS

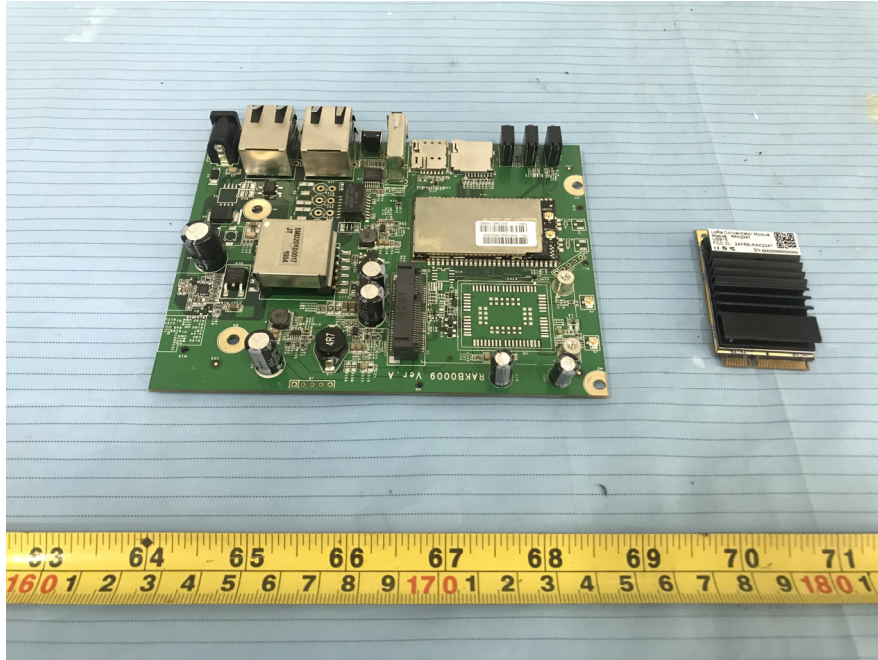
EUT – Cover off View 1



EUT –Cover off View 2



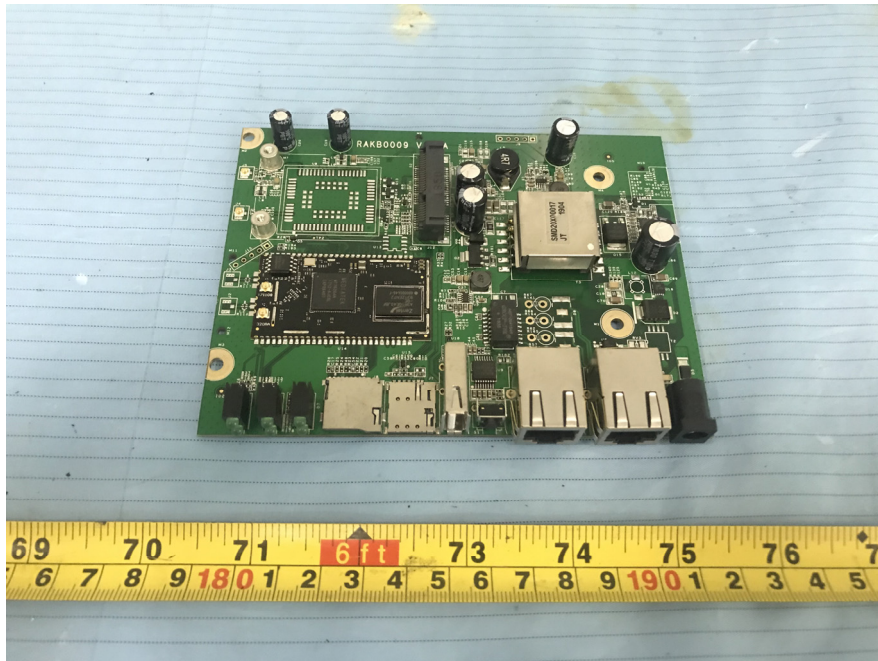
EUT –Cover off View 3



EUT –Main Board Front View



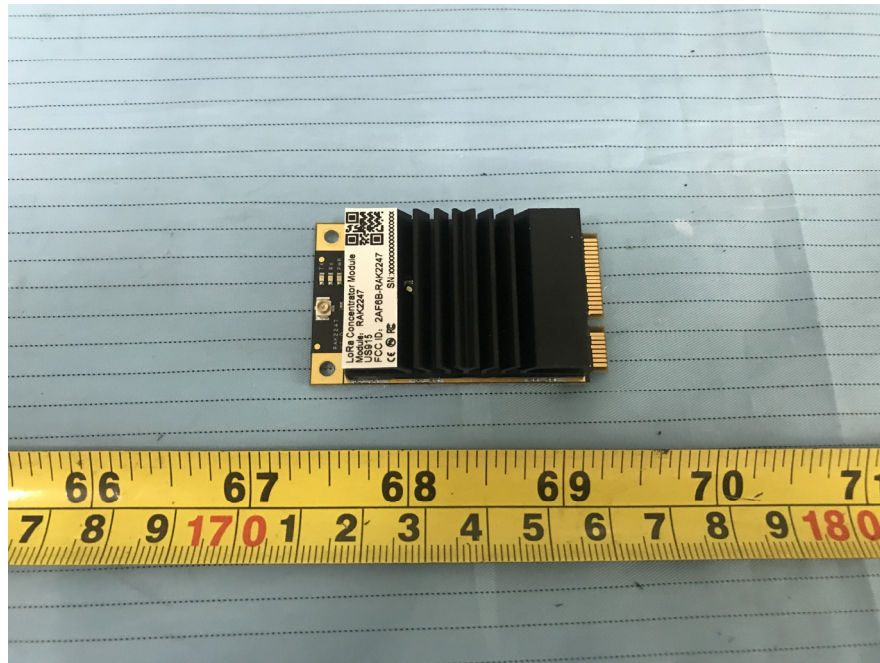
EUT –Main Board Front Shielding off View



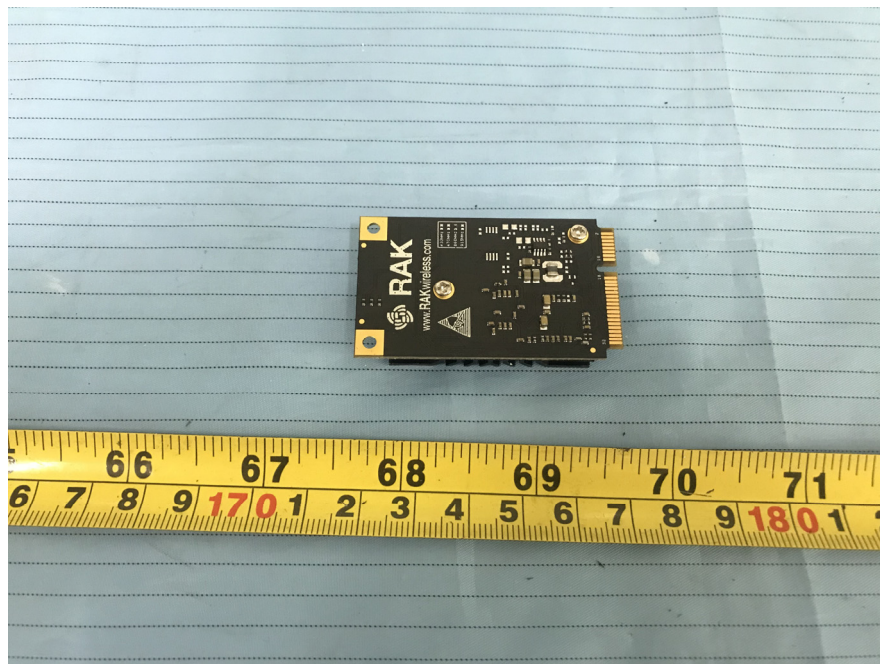
EUT –Main Board Rear View



EUT –Lora Main Board Front View



EUT –Lora Main Board Rear View



EUT – IC View

The image shows the IC view of the EUT circuit board. The board is green and populated with various components. The central component is a black integrated circuit (IC) with two main sections. The left section is labeled 'MEDIATEK' and 'MT7620AN 1712-AUCSL EAP0K407'. The right section is labeled 'Intel' and 'A3R1GE40JBF'. The board also features several other components, including resistors (R1, R2, R3, R4, R5, R6, R7, R8, R9, R10, R11, R12, R13, R14, R15, R16, R17, R18, R19, R20, R21, R22, R23, R24, R25, R26, R27, R28, R29, R30, R31, R32, R33, R34, R35, R36, R37, R38, R39, R40, R41, R42, R43, R44, R45, R46, R47, R48, R49, R50, R51, R52, R53, R54, R55, R56, R57, R58, R59, R60, R61, R62, R63, R64, R65, R66, R67, R68, R69, R70, R71, R72, R73, R74, R75, R76, R77, R78, R79, R80, R81, R82, R83, R84, R85, R86, R87, R88, R89, R90, R91, R92, R93, R94, R95, R96, R97, R98, R99, R100), capacitors (C1, C2, C3, C4, C5, C6, C7, C8, C9, C10, C11, C12, C13, C14, C15, C16, C17, C18, C19, C20, C21, C22, C23, C24, C25, C26, C27, C28, C29, C30, C31, C32, C33, C34, C35, C36, C37, C38, C39, C40, C41, C42, C43, C44, C45, C46, C47, C48, C49, C50, C51, C52, C53, C54, C55, C56, C57, C58, C59, C60, C61, C62, C63, C64, C65, C66, C67, C68, C69, C70, C71, C72, C73, C74, C75, C76, C77, C78, C79, C80, C81, C82, C83, C84, C85, C86, C87, C88, C89, C90, C91, C92, C93, C94, C95, C96, C97, C98, C99, C100), and other components like the TP2 test point and the J12 connector. The board is populated with various components, including resistors, capacitors, and other integrated circuits, all mounted on a green printed circuit board (PCB).

