

You Brush.  
We Care.  
You Smile.

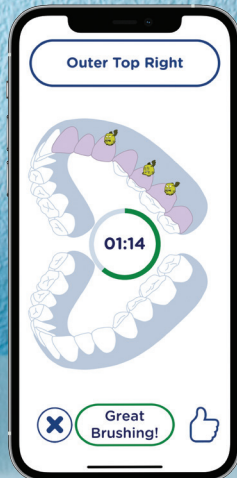


# Smart Sonic

Manual



## Playbrush Smart Sonic



# EN Manual

UL 1431

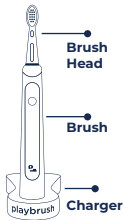
## Instruction for Use

General information: A130

Manufacturer: Trisa AG, Distributor Playbrush GmbH,

AT: support@playbrush.com, www.playbrush.com

Electrical data: see bottom of charging device



# IMPORTANT SAFEGUARDS

When using electrical products, especially when children are present, basic safety precautions should always be followed,

including the following:

**READ ALL THESE INSTRUCTIONS BEFORE USING**  
**DANGER** – To reduce the risk of electrocution:

Children and people with reduced physical, sensory or mental capabilities, or lack of experience

and knowledge must be supervised during use of the device or are warned prior to use and understand potential dangers. Cleaning and user maintenance shall not be made by children without supervision.

Children shall not play with the appliance. The product is not suitable for children less than 3 years old.

Check the power cord and charger regularly for cracks or other damage. Never touch the device with sharp or hot objects. Never unplug by pulling on the cable instead of the connector. The power cord cannot be replaced. If the power cable is damaged, dispose of the device. Do not continue to use a damaged charger or

Playbrush.

Do not use charging base near water or outdoors.

Never touch the plug with wet hands. Do not reach for a product that has fallen into water. Unplug immediately.

Do not use while bathing.

Do not place or store product where it can fall or be pulled into a tub or sink.

Do not place in or drop into water or other liquid.

**WARNING** – To reduce the risk of burns, electrocution, fire, or injury to persons.

Use this product only for its intended use as described in this manual (tooth brushing). For the purposes

of recharging the battery, only use the detachable supply unit 4680 or 4656 provided with this appliance.



Symbol detachable supply unit

Only use with original brush heads. If the brush head breaks off, after fall, impact or improper use, there is danger of suffocation. Close

supervision is necessary when this appliance is used by, on, or near children or individuals with certain disabilities. Never use while sleeping or drowsy. Do not use outdoors or where oxygen is being administered. Do not repair or change the product. Do not use attachments not recommended by the manufacturer. Never

operate this product if it has a damaged cord or plug, if it is not working properly, if it has been dropped or damaged, or dropped into water. Return the product to a service center for examination and repair. Keep the cord away from heated surfaces. Batteries are non-replaceable.

# SAVE THESE INSTRUCTIONS

## WARNINGS

Use only at room temperature (0-40°C). This toothbrush is suitable for braces and dentures. Any person with a pacemaker or other electrical implant should consult a medical professional in advance.

## HYGIENE

Replace brush heads every 3 months. Thoroughly rinse brush head under running water after each use.

## BATTERY PACK

To extend the life of the battery, use the toothbrush

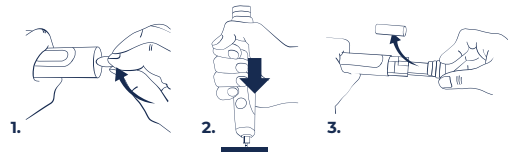
at least every six months until fully discharged and fully charged again. The toothbrush should never be left uncharged and charged at least every 6 months. Place the toothbrush in the charger after each use to ensure optimal performance at all times. For the most energy-efficient use, it is recommended that the plug of the charger be removed from the socket after full charge.

## REMOVING THE BATTERY CELL

Replacement of the battery is not possible. Only dispose of fully discharged batteries. Once opened the guarantee automatically expires.

1. At the end of the service life, open the cap with a coin.
2. Press the unit against a firm surface and push out the inner components.
3. Cut through connecting wires and remove battery. Do not short-circuit the positive and negative poles and mask off for protection. Take the battery to a designated collection point.

## RECYCLING



Electrical appliances must not be disposed of with household waste. Use the return options in the designated sales or collection points.

This toothbrush contains a lithium ion rechargeable battery. For environmental reasons, it must be removed at the end of its life and disposed of in an environmental manner.



## **GUARANTEE INFORMATION**

For this service, the manufacturer will provide you with a two-year guarantee from the date of purchase (purchase receipt). The guarantee covers the repair or replacement of a device with material or manufacturing defects. To maintain the warranty, use only original Playbrush brushes. Wear and tear in the context of normal use are not covered by the guarantee. The guarantee expires in the case of third-party entries or changes to the original condition, as well as in commercial use. The guarantee service requires that the defective device is sent with the purchase receipt.

The manufacturer disclaims any liability for damage caused by non-observance of these operating instructions, by improper use and repairs or incorrect operation. We accept no liability for damage to the smartphone or tablet that has arisen in connection with the use of Playbrush. Subject to change!

## **DECLARATION OF CONFORMITY**

Hereby, Playbrush GmbH declares that Playbrush complies with the essential requirements and other relevant provisions of Directives 2014/30/EU, 2014/35/EU, 2014/53/EU, 2009/125/EC and 2011/65/EU.

The compliance statement can be viewed at <https://www.playbrush.com/doc.pdf>.



## **FCC RULES**

This device complies with Part 15 of the FCC Rules. Operation is subject to the following two conditions:

- (1) this device may not cause harmful interference, and
- (2) this device must accept any interference received, including interference that may cause undesired operation. No changes shall be made to the equipment without the manufacturer's permission

as this may void the user's authority to operate the equipment.

This device has been designed and complies with the safety requirements for portable RF exposure in accordance with FCC rule part At the end of the §2.1093 and KDB 447498 D01. FCC ID: 2AF47A130





# Quickstart **GUIDE**

# Quickstart Guide



## 1. Activate

Charge the Playbrush Smart Sonic using the supplied charging station. Once you take it off charge you should see a blue blinking light. If not, continue charging.



## 2. Turn on Bluetooth

Make sure that Bluetooth on your smartphone/tablet is turned on. Don't pair Playbrush and your smartphone/tablet in Bluetooth settings. This takes place within the app.



## 3. Playbrush App

Download the Playbrush app onto your smartphone or tablet.

**Android Users:** As Bluetooth falls under the location settings, please allow the app to access your location. Playbrush will never actually access the location.

A **one-off registration** is required when first loading the app. If you purchased your Playbrush from the Playbrush website, please enter the email address you used for your order. Otherwise, please use any email address.



## 4. Connect

Pick up your Playbrush and launch the app. If the Playbrush isn't showing a blinking blue light, press the start button. If your Playbrush shows a blinking blue light, it will automatically begin to connect within the app. Your Playbrush is successfully connected when it shows a full blue light.



## Playbrush Light Signals



### Blinking Red

Playbrush needs to be charged.



### Blinking Green

Playbrush is charging.



### Full Green Light

Playbrush is fully charged.

## Vibration Feedback

When connected to the app, Playbrush will vibrate to indicate if pressure or speed of brushing is too high. When offline brushing (not using the app), Playbrush will vibrate every 30 seconds.



### Flight Mode

Use flight mode to save battery. Connect Playbrush to the app and press the aeroplane button in settings to turn on flight mode. Simply press the start button and connect in the app to disable flight mode.

**For any queries please contact us:**  
**[support@playbrush.com](mailto:support@playbrush.com)**

## FAQ

### My Playbrush Smart Sonic does not work:

- Your Playbrush may need to be charged. Place the toothbrush on charge overnight.
- Try using the socket with another electrical appliance.

### Brushing performance is low or insufficient:

- The toothbrush head may need to be cleaned or replaced.
- Your Playbrush may need to be charged.

### Playbrush Smart Sonic turned off during brushing:

- Playbrush will automatically turn off when the battery level is low. Place the Playbrush on charge for at least 1 hour or overnight if possible.

### Playbrush Smart Sonic sometimes vibrates in unusual motions during brushing:

- Your Playbrush's vibrations will quickly pause every thirty seconds and at 2 minutes to help track brushing time. Your Playbrush's vibrations will also pause to indicate if pressure or speed of brushing is too high.



[www.playbrush.com](http://www.playbrush.com)