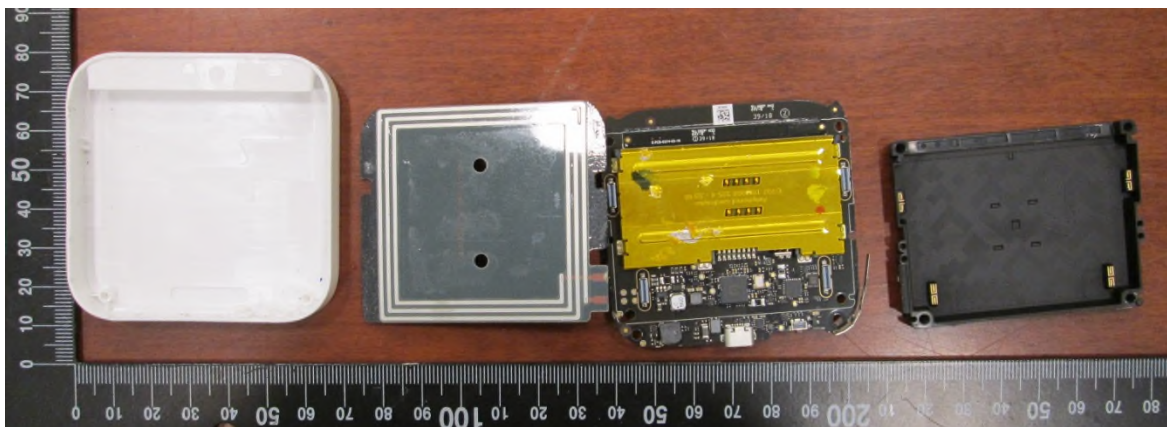


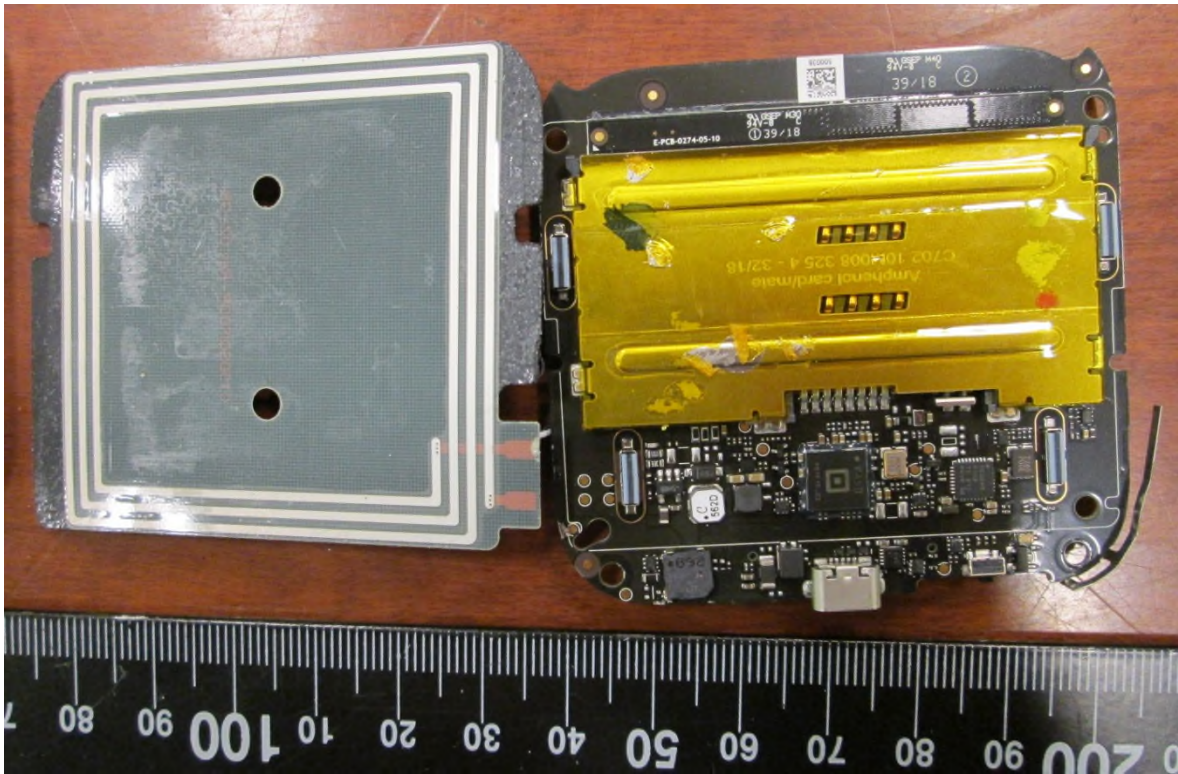
EUT – Internal view 1
Back cover removed.



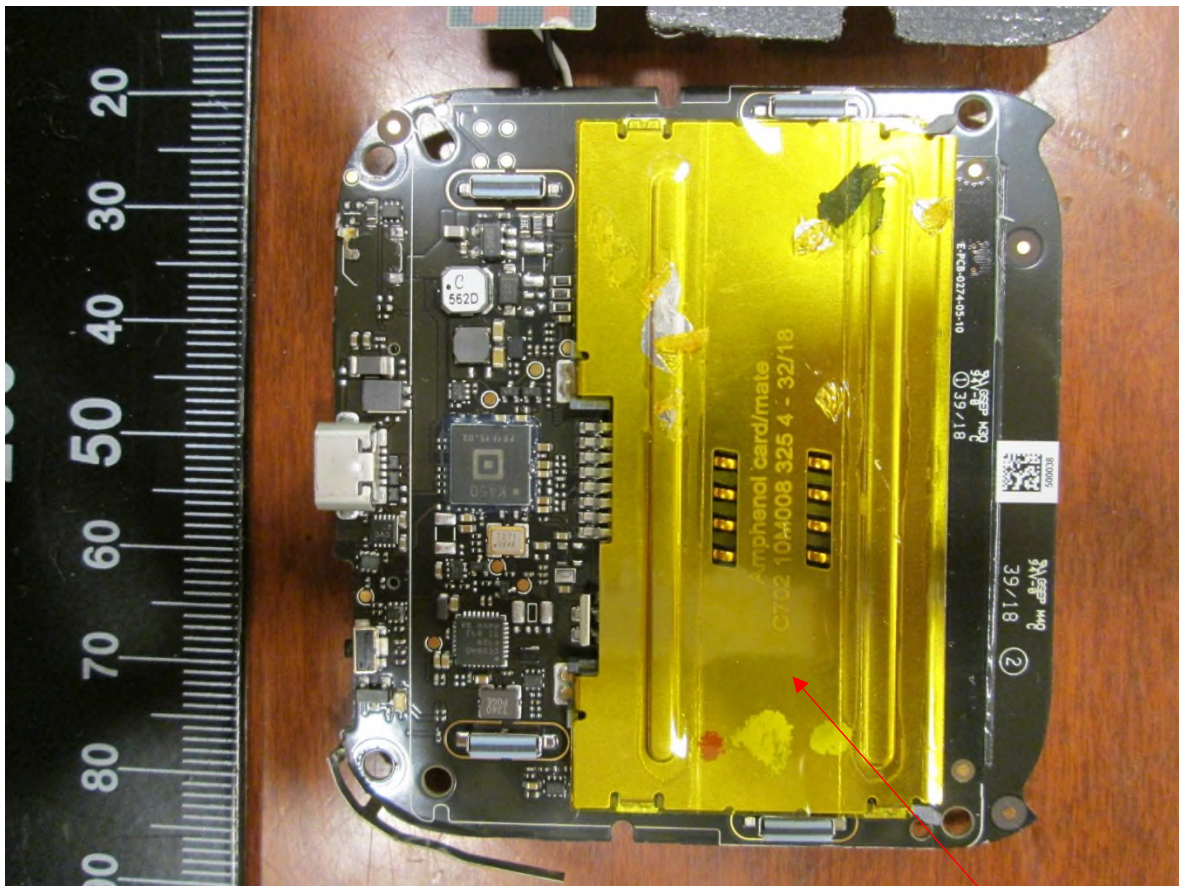
EUT – Internal view 2
PCB removed from enclosure



EUT – Internal view 3
Cage removed.
Cover removed over 13.56 MHz antenna.

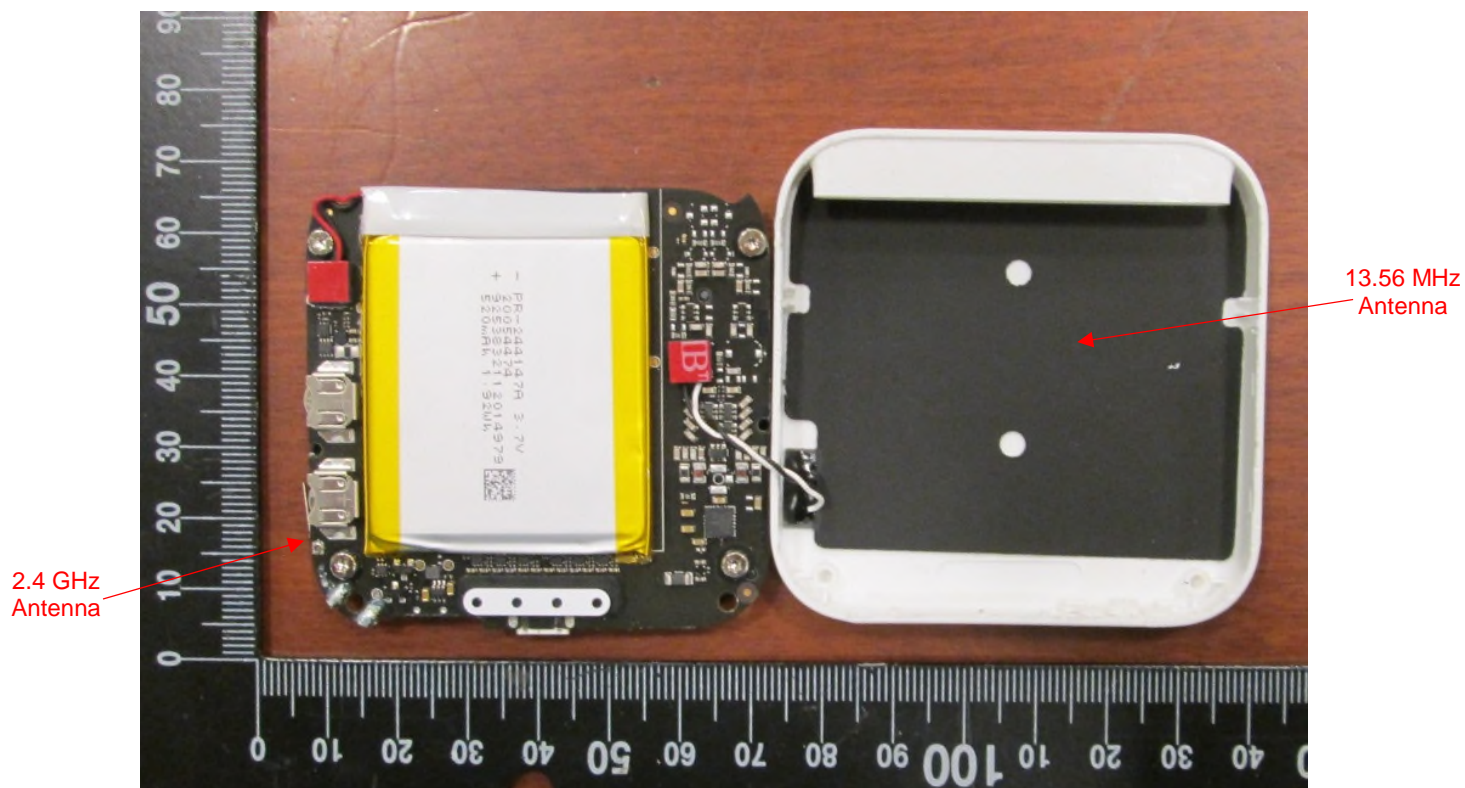


EUT – Internal view 4
Close-up of PCB, side 1

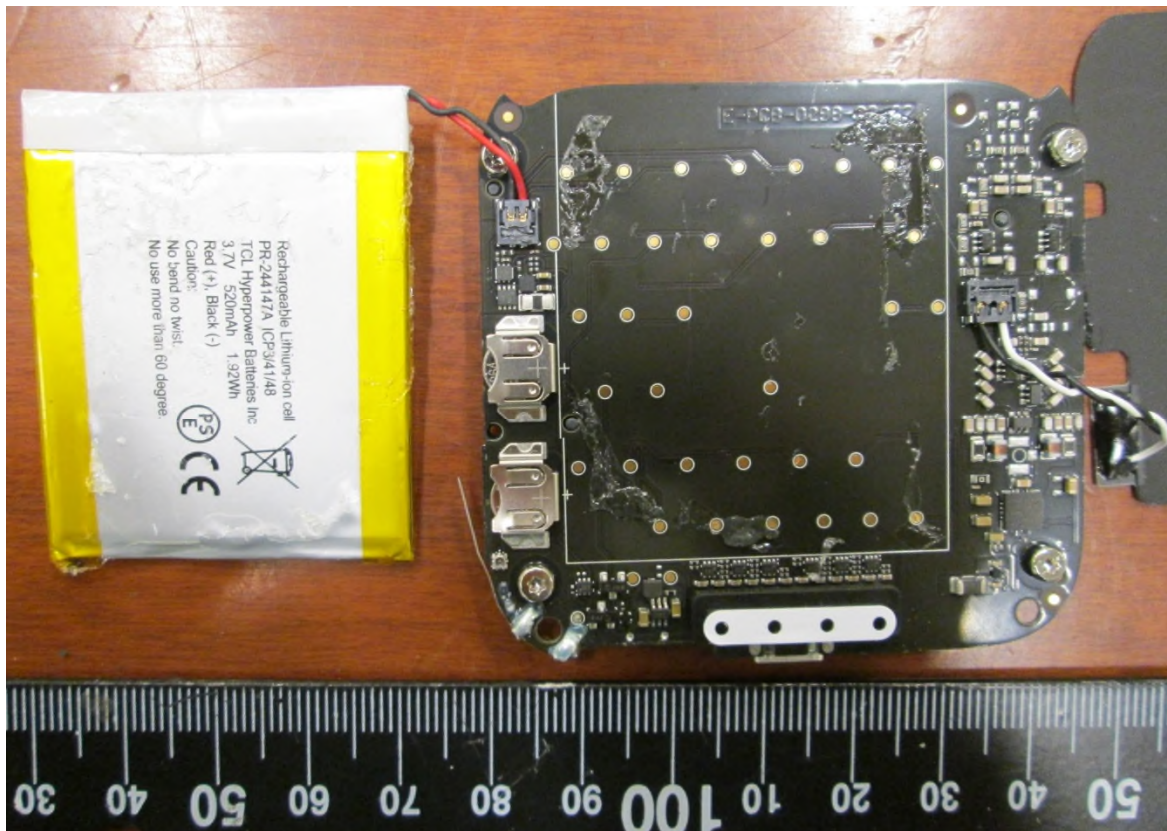


EUT – Internal view 5
Close-up of PCB side 1, alternate view

Contact card socket
soldered directly onto the
PCB. Not a shield. No
components under this part.



EUT – Internal view 6
PCB removed from enclosure and inverted
PCB side 2 shown.



EUT – Internal view 8
Close-up of PCB side 2, with battery moved aside.