

EUT – Internal view 1
Enclosure Cover removed

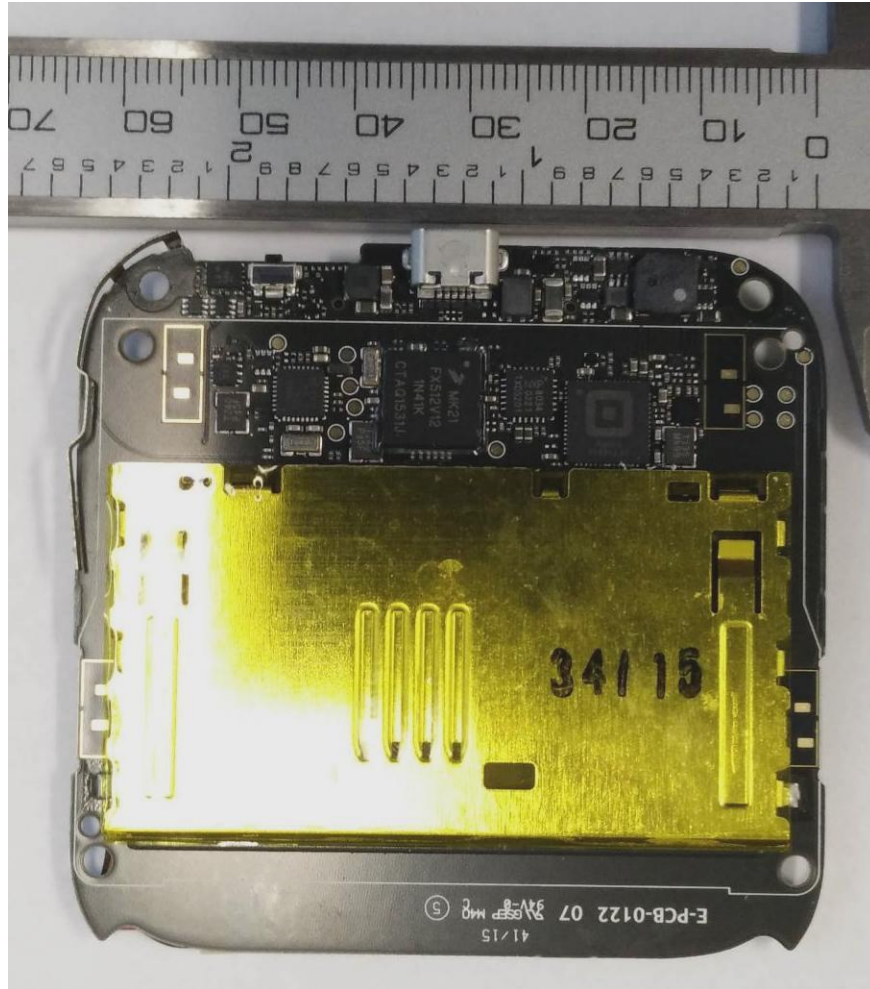
BLE antenna



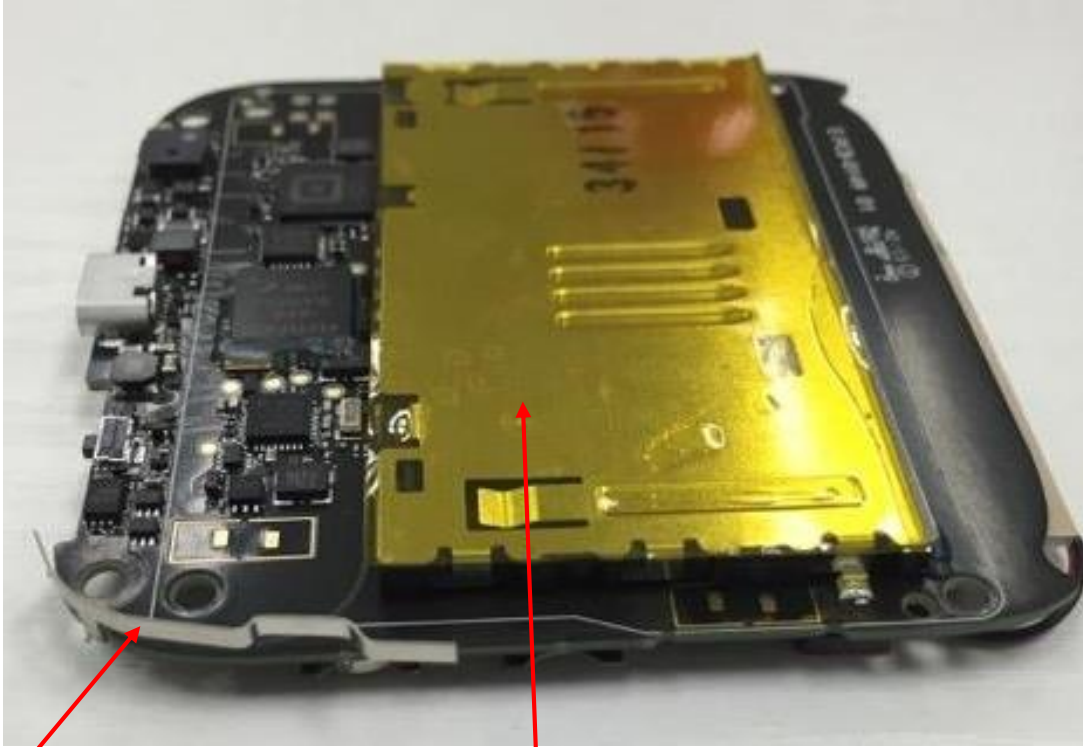
EUT – Internal view 2
PCB, side 1, with cage



EUT – Internal view 3
PCB, side 1, cage removed



EUT – Internal view 4
PCB, side 1, cage removed, alternate angle



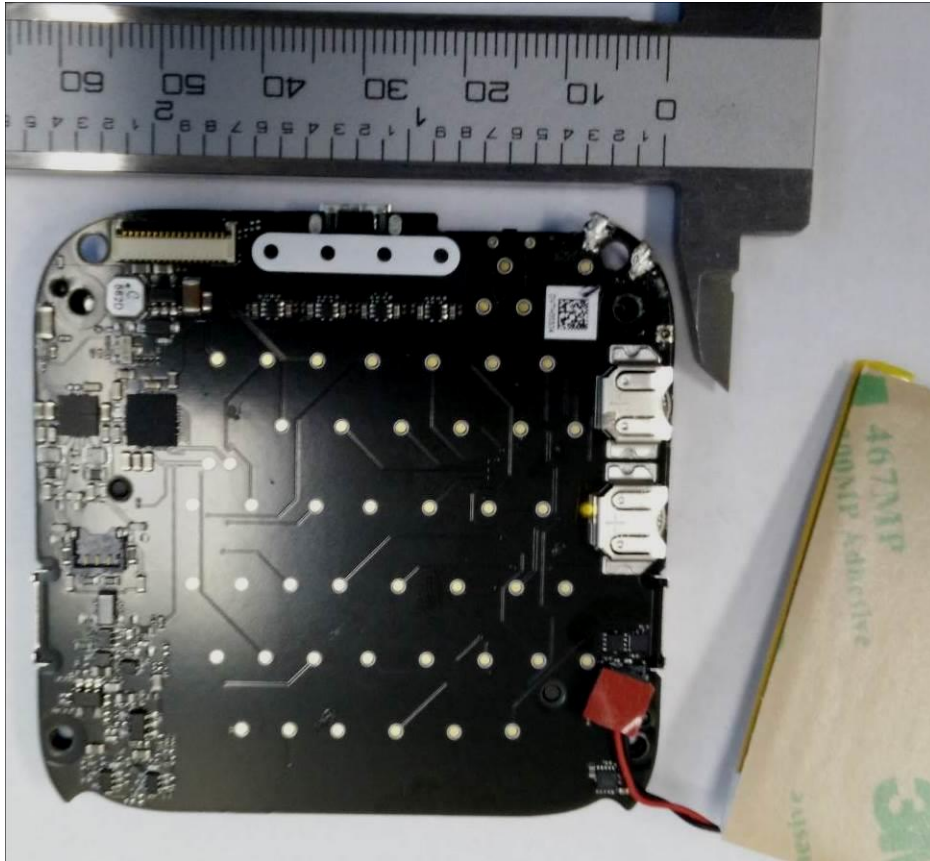
BLE antenna

Contact card socket soldered directly onto PCB. Not a shield. There are no components under this part.

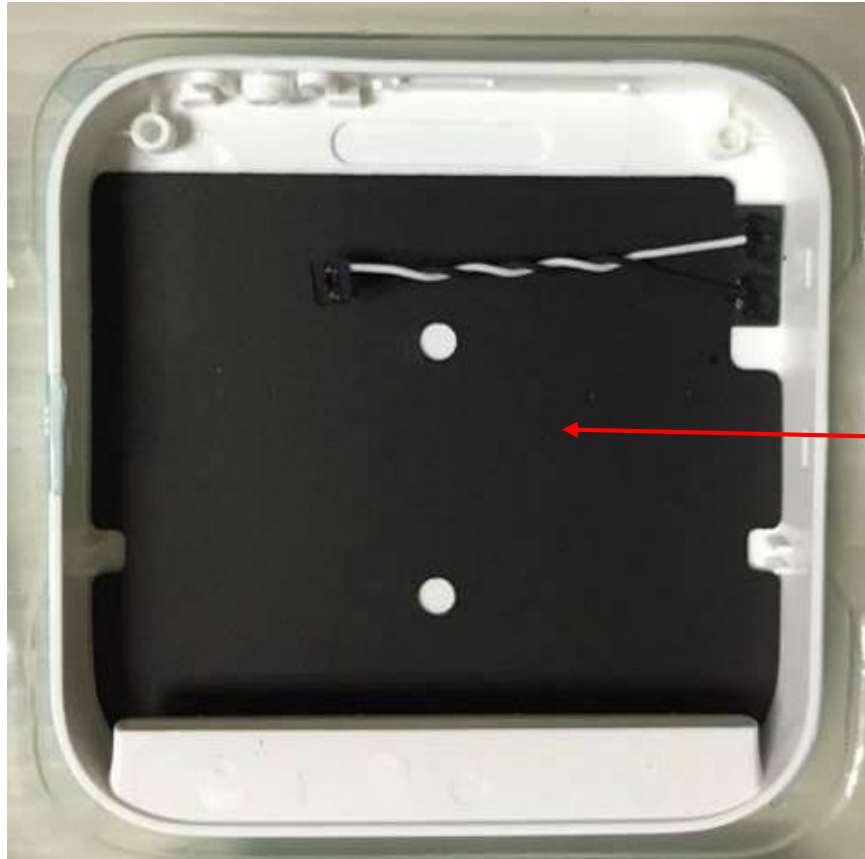
EUT – Internal view 5
PCB, side 2, with battery in place



EUT – Internal view 6
PCB, side 2, battery removed



EUT – Internal view 7
NFC antenna, mounted to housing



13.56 MHz
antenna

EUT after C2PC– Internal view 8
PCB, side 2, battery removed

U23
depopulated

