




# EMC TEST REPORT



Report No.: 15020981-FCC-E

Supersede Report No.: N/A

Applicant	chengdu APQ Automation Technology co.,ltd.	
Product Name	Industrial computer	
Main Model No.	TPC7000	
Serial Model	TPC7000-1, TPC7000-5, TPC7000-6, TPC7000-7	
Test Standard	FCC Part 15 Subpart B Class A:2014, ANSI C63.4: 2014	
Test Date	September 16 to September 17, 2015	
Issue Date	September 24, 2015	
Test Result	<input checked="" type="checkbox"/> Pass <input type="checkbox"/> Fail	
Equipment complied with the specification	<input checked="" type="checkbox"/>	
Equipment did not comply with the specification	<input type="checkbox"/>	
		
Deon Dai Test Engineer	Herve Idoko Checked By	
This test report may be reproduced in full only Test result presented in this test report is applicable to the tested sample only		

Issued by:  
SIEMIC (Nanjing-China) Laboratories  
2-1 Longcang Avenue Yuhua Economic and  
Technology Development Park, Nanjing, China  
Tel:+86(25)86730128/86730129 Fax:+86(25)86730127 Email: China@siemic.com.cn

## Laboratories Introduction

SIEMIC, headquartered in the heart of Silicon Valley, with superior facilities in US and Asia, is one of the leading independent testing and certification facilities providing customers with one-stop shop services for Compliance Testing and Global Certifications.



In addition to testing and certification, SIEMIC provides initial design reviews and compliance management throughout a project. Our extensive experience with China, Asia Pacific, North America, European, and International compliance requirements, assures the fastest, most cost effective way to attain regulatory compliance for the global markets.

### Accreditations for Conformity Assessment

Country/Region	Scope
USA	EMC, RF/Wireless, SAR, Telecom
Canada	EMC, RF/Wireless, SAR, Telecom
Taiwan	EMC, RF, Telecom, SAR, Safety
Hong Kong	RF/Wireless, SAR, Telecom
Australia	EMC, RF, Telecom, SAR, Safety
Korea	EMI, EMS, RF, SAR, Telecom, Safety
Japan	EMI, RF/Wireless, SAR, Telecom
Singapore	EMC, RF, SAR, Telecom
Europe	EMC, RF, SAR, Telecom, Safety

Test Report No.	15020981-FCC-E
Page	3 of 34

This page has been left blank intentionally.

## CONTENTS

1. REPORT REVISION HISTORY.....	5
2. CUSTOMER INFORMATION .....	5
3. TEST SITE INFORMATION.....	5
4. EQUIPMENT UNDER TEST (EUT) INFORMATION .....	6
5. TEST SUMMARY .....	7
6. MEASUREMENTS, EXAMINATION AND DERIVED RESULTS .....	8
6.1 AC POWER LINE CONDUCTED EMISSIONS.....	8
6.2 RADIATED EMISSIONS.....	14
ANNEX A. TEST INSTRUMENT.....	18
ANNEX B. EUT AND TEST SETUP PHOTOGRAPHS .....	19
ANNEX C. TEST SETUP AND SUPPORTING EQUIPMENT.....	30
ANNEX D. USER MANUAL / BLOCK DIAGRAM / SCHEMATICS / PARTLIST.....	33
ANNEX E. DECLARATION OF SIMILARITY .....	34

Test Report No.	15020981-FCC-E
Page	5 of 34

## 1. Report Revision History

Report No.	Report Version	Description	Issue Date
15020981-FCC-E	NONE	Original	September 24, 2015

## 2. Customer information

Applicant Name	chengdu APQ Automation Technology co.,ltd.
Applicant Add	ChengJia Road NO.6 in Sichuan Province Chengdu Chenghua District City Longtan Industrial Park
Manufacturer	chengdu APQ Automation Technology co.,ltd.
Manufacturer Add	ChengJia Road NO.6 in Sichuan Province Chengdu Chenghua District City Longtan Industrial Park

## 3. Test site information

Lab performing tests	SIEMIC (Nanjing-China) Laboratories
Lab Add	2-1 Longcang Avenue Yuhua Economic and Technology Development Park, Nanjing, China
FCC Test Site No.	986914
IC Test Site No.	4842B-1
Test Software	Labview of SIEMIC version 1.0

#### 4. Equipment under Test (EUT) Information

Description of EUT: Industrial computer

Main Model: TPC7000

Serial Model: TPC7000-1, TPC7000-5, TPC7000-6, TPC7000-7

Date EUT received: September 15, 2015

Test Date(s): September 16 to September 17, 2015

Port: USB Port\*4, LAN Port \*2, VGA Port, HDMI Port, SPK Port, MIC Port, COM1/COM2/COM3/COM4/COM5/COM6 Port

Power: AC ADAPTER:  
MODEL: KPL-060F  
INPUT: 100-240V~ 50/60Hz 1.7A  
OUTPUT: DC12V 5.0A

Trade Name: N/A

FCC ID: 2AF2JTPC7000ABOX600

## 5. Test Summary

The product was tested in accordance with the following specifications.  
All testing has been performed according to below product classification:

FCC Rules	Description of Test	Result
§15.107; ANSI C63.4: 2014	AC Power Line Conducted Emissions	Compliance
§15.109; ANSI C63.4: 2014	Radiated Emissions	Compliance

### Measurement Uncertainty

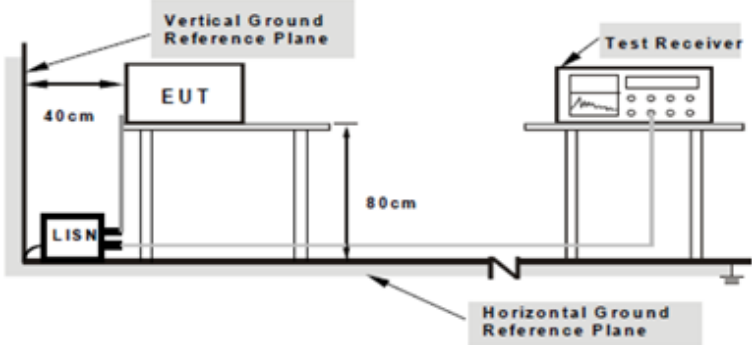
Emissions		
Test Item	Description	Uncertainty
Radiated Emissions	Confidence level of approximately 95% (in the case where distributions are normal), with a coverage factor of 2 (for EUTs < 0.5m X 0.5m X 0.5m)	3.952dB

## 6. Measurements, Examination And Derived Results

### 6.1 AC Power Line Conducted Emissions

Temperature	24°C
Relative Humidity	50%
Atmospheric Pressure	1013mbar
Test date :	September 16, 2015
Tested By :	Deon Dai

#### Requirement(s):

Spec	Requirement	Applicable														
47CFR §15.107	<p>For Low-power radio-frequency devices that is designed to be connected to the public utility (AC) power line, the radio frequency voltage that is conducted back onto the AC power line on any frequency or frequencies, within the band 150 kHz to 30 MHz, shall not exceed the limits in the following table, as measured using a 50 [μ]H/50 ohms line impedance stabilization network (LISN). The lower limit applies at the boundary between the frequencies ranges.</p> <table border="1"> <thead> <tr> <th rowspan="2">Frequency ranges (MHz)</th><th colspan="2">Limit (dBμV)</th></tr> <tr> <th>QP</th><th>Average</th></tr> </thead> <tbody> <tr> <td>0.15 ~ 0.5</td><td>66 - 56</td><td>56 - 46</td></tr> <tr> <td>0.5 ~ 5</td><td>56</td><td>46</td></tr> <tr> <td>5 ~ 30</td><td>60</td><td>50</td></tr> </tbody> </table>	Frequency ranges (MHz)	Limit (dBμV)		QP	Average	0.15 ~ 0.5	66 - 56	56 - 46	0.5 ~ 5	56	46	5 ~ 30	60	50	<input checked="" type="checkbox"/>
Frequency ranges (MHz)	Limit (dBμV)															
	QP	Average														
0.15 ~ 0.5	66 - 56	56 - 46														
0.5 ~ 5	56	46														
5 ~ 30	60	50														
Test Setup	 <p>Note: 1.Support units were connected to second LISN. 2.Both of LISNs (AMN) are 80cm from EUT and at least 80cm from other units and other metal planes support units.</p>															
Procedure	<ol style="list-style-type: none"> <li>The EUT and supporting equipment were set up in accordance with the requirements of the standard on top of a 1.5m x 1m x 0.8m high, non-metallic table.</li> <li>The power supply for the EUT was fed through a 50W/50mH EUT LISN, connected to filtered mains.</li> <li>The RF OUT of the EUT LISN was connected to the EMI test receiver via a low-loss coaxial cable.</li> <li>All other supporting equipment were powered separately from another main supply.</li> <li>The EUT was switched on and allowed to warm up to its normal operating condition.</li> <li>A scan was made on the NEUTRAL line (for AC mains) or Earth line (for DC power) over the required frequency range using an EMI test receiver.</li> <li>High peaks, relative to the limit line, were then selected, The EMI test receiver was then tuned to the selected frequencies and the necessary measurements made with a receiver bandwidth setting of 10kHz.</li> <li>Steps 6-7 were repeated for the LIVE line (for AC mains) or DC line (for DC power).</li> </ol>															
Remark																
Result	<input checked="" type="checkbox"/> Pass <input type="checkbox"/> Fail															
Test Data	<input checked="" type="checkbox"/> Yes <input type="checkbox"/> N/A															
Test Plot	<input checked="" type="checkbox"/> Yes <input type="checkbox"/> N/A															



### Data sample

Frequency (MHz)	Quasi-Peak (dBμV/m)	Limit (dBμV/m)	Margin (dB)	Average (dBμV/m)	Limit (dBμV/m)	Margin (dB)	Factors (dB)
xxx	56.21	66.00	-9.79	39.20	56.00	-16.80	12.22

Frequency (MHz) = Emission frequency in MHz

Quais-Peak/Average (dBμV/m)=Receiver Reading(dBμV/m)+ Factor(dB)

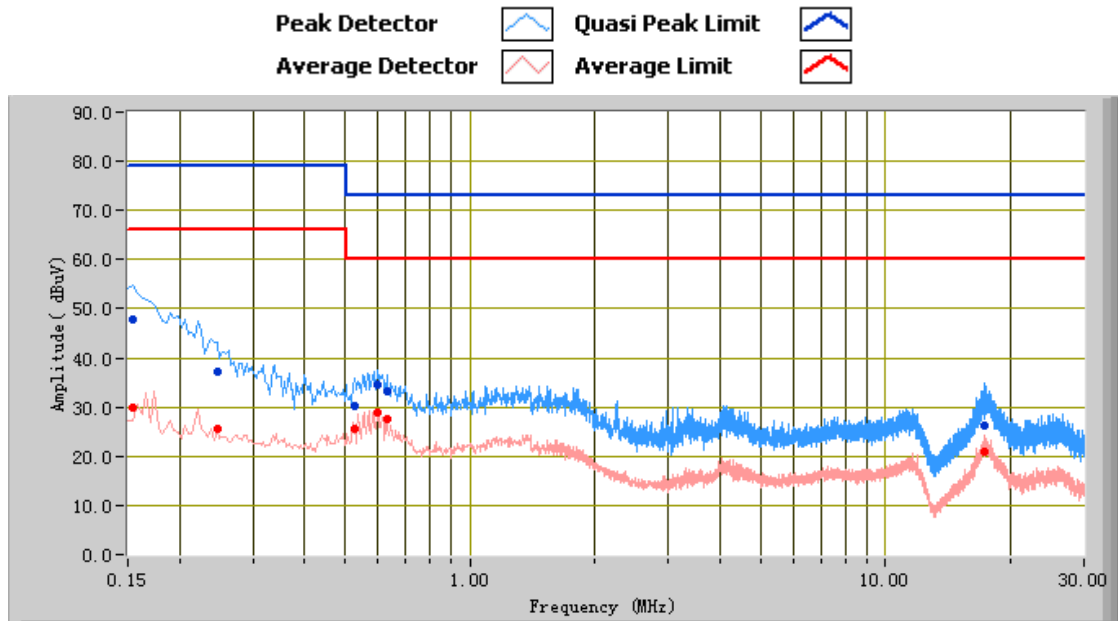
Limit(dBμV/m)=Limit stated in standard

Factor (dB)= cable loss+ Insertion loss of LISN+ Insertion loss of transient limiter (The transient limiter included 10dB attenuation)

### Calculation Formula:

Margin (dB)=Quasi Peak / Average (dBμV/m) – limit (dBμV/m)

Test Mode 1: Normal Working Mode

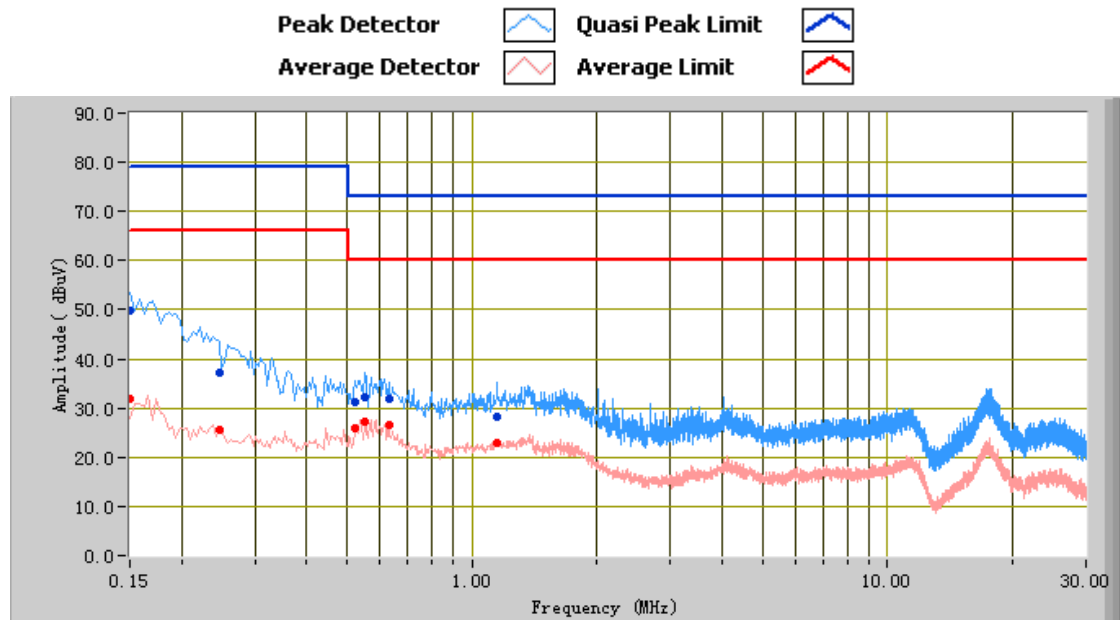


### Test Data

Phase Line Plot at 120Vac, 60Hz

Frequency (MHz)	Quasi Peak (dBμV)	Limit (dBμV)	Margin (dB)	Average (dBμV)	Limit (dBμV)	Margin (dB)	Factors (dB)
0.15	47.92	79.00	-31.08	29.78	66.00	-36.22	12.16
0.60	34.41	73.00	-38.59	28.76	60.00	-31.24	11.01
0.25	37.29	79.00	-41.71	25.49	66.00	-40.51	11.46
0.63	33.14	73.00	-39.86	27.45	60.00	-32.55	10.98
0.53	30.34	73.00	-42.66	25.49	60.00	-34.51	11.07
17.27	26.35	73.00	-46.65	20.79	60.00	-39.21	11.47

Test Mode 1:	Normal Working Mode
--------------	---------------------

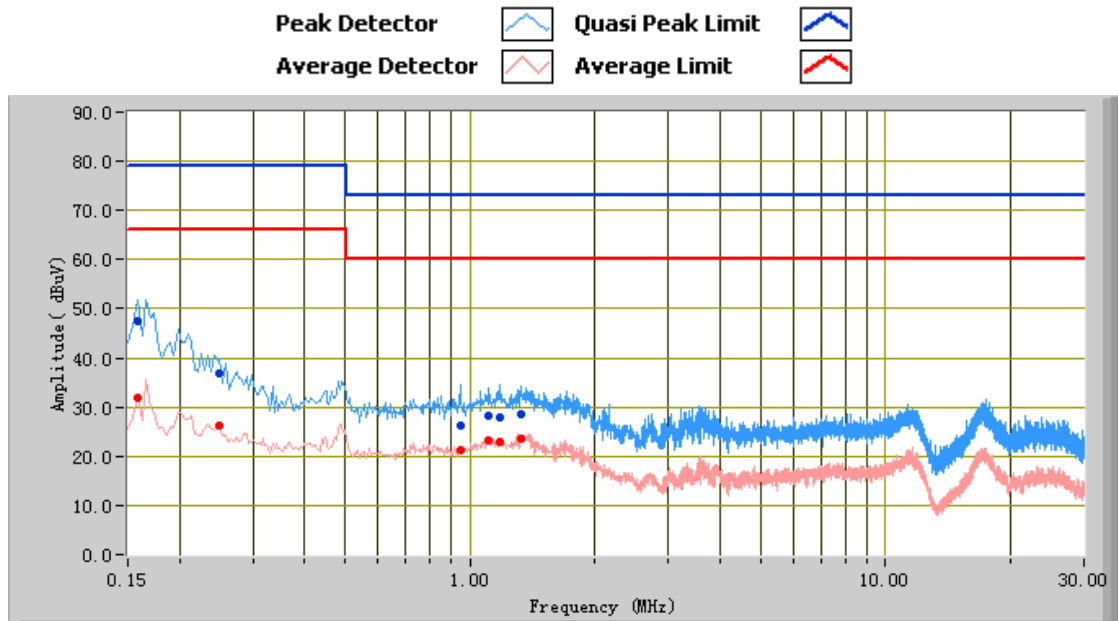


### Test Data

#### Phase Neutral Plot at 120Vac, 60Hz

Frequency (MHz)	Quasi Peak (dBμV)	Limit (dBμV)	Margin (dB)	Average (dBμV)	Limit (dBμV)	Margin (dB)	Factors (dB)
0.15	49.72	79.00	-29.28	32.01	66.00	-33.99	12.21
0.25	37.04	79.00	-41.96	25.56	66.00	-40.44	11.46
0.55	32.15	73.00	-40.85	27.23	60.00	-32.77	11.02
0.52	31.32	73.00	-41.68	26.02	60.00	-33.98	11.04
0.63	32.04	73.00	-40.96	26.50	60.00	-33.50	10.97
1.15	28.35	73.00	-44.65	23.06	60.00	-36.94	10.73

Test Mode 2: Normal Working Mode

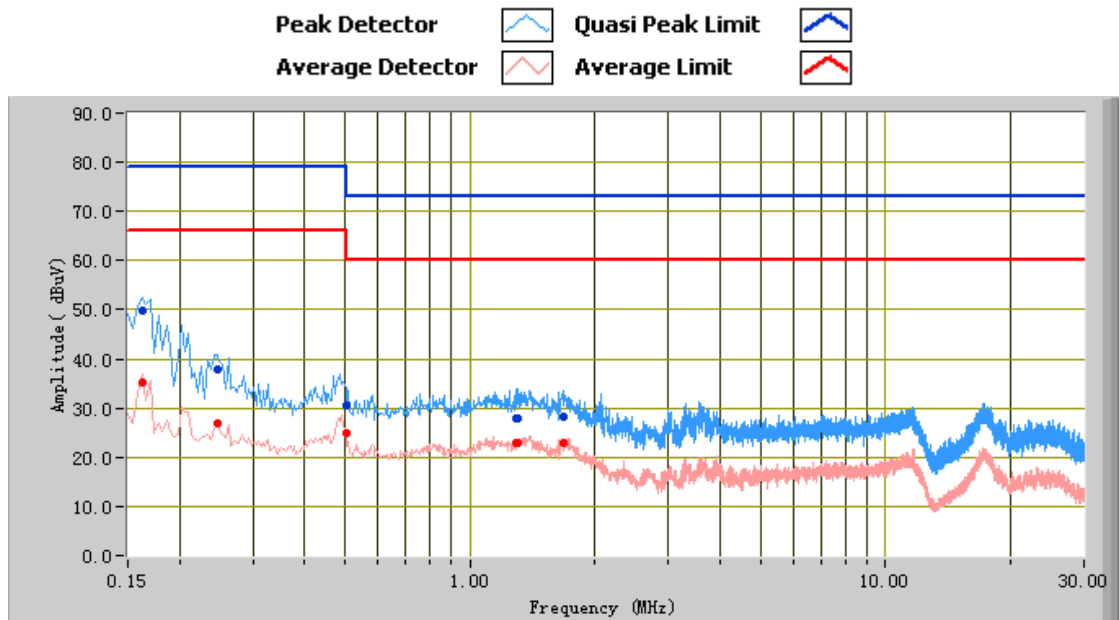


### Test Data

Phase Line Plot at 240Vac, 50Hz

Frequency (MHz)	Quasi Peak (dBμV)	Limit (dBμV)	Margin (dB)	Average (dBμV)	Limit (dBμV)	Margin (dB)	Factors (dB)
0.16	47.53	79.00	-31.47	32.00	66.00	-34.00	12.11
0.95	26.21	73.00	-46.79	21.28	60.00	-38.72	10.73
1.17	27.97	73.00	-45.03	23.05	60.00	-36.95	10.71
1.33	28.58	73.00	-44.42	23.62	60.00	-36.38	10.74
0.25	36.86	79.00	-42.14	26.40	66.00	-39.60	11.45
1.11	28.35	73.00	-44.65	23.32	60.00	-36.68	10.70

Test Mode 2:	Normal Working Mode
--------------	---------------------



### Test Data

#### Phase Neutral Plot at 240Vac, 50Hz

Frequency (MHz)	Quasi Peak (dBμV)	Limit (dBμV)	Margin (dB)	Average (dBμV)	Limit (dBμV)	Margin (dB)	Factors (dB)
0.16	49.82	79.00	-29.18	35.23	66.00	-30.77	12.04
0.25	37.71	79.00	-41.29	26.86	66.00	-39.14	11.46
0.50	30.41	73.00	-42.59	24.77	60.00	-35.23	11.06
1.30	27.99	73.00	-45.01	22.99	60.00	-37.01	10.77
1.29	27.85	73.00	-45.15	22.96	60.00	-37.04	10.76
1.67	28.12	73.00	-44.88	22.80	60.00	-37.20	10.85

## 6.2 Radiated Emissions

Temperature	24°C
Relative Humidity	50%
Atmospheric Pressure	1013mbar
Test date :	September 17, 2015
Tested By :	Deon Dai

### Requirement(s):

Spec	Requirement	Applicable	
47CFR §15.107(d)	Except higher limit as specified elsewhere in other section, the emissions from the low-power radio-frequency devices shall not exceed the field strength levels specified in the following table and the level of any unwanted emissions shall not exceed the level of the fundamental emission. The tighter limit applies at the band edges	<div><input checked="" type="checkbox"/></div>	
	Frequency range (MHz)		Field Strength (µV/m)
	30 – 88		100
	88 – 216		150
	216 960		200
	Above 960		500

Test Setup	<p>The diagram illustrates the test setup for radiated emissions. It shows a test unit (EUT) mounted on a support unit, positioned 80cm above a ground plane. An antenna tower is located 3m away from the EUT. The antenna is at a height of 1-4m, which is adjustable. A test receiver is connected to the antenna tower.</p>
------------	---

Procedure	<ol style="list-style-type: none"> <li>The EUT was switched on and allowed to warm up to its normal operating condition.</li> <li>The test was carried out at the selected frequency points obtained from the EUT characterisation. Maximization of the emissions, was carried out by rotating the EUT, changing the antenna polarization, and adjusting the antenna height in the following manner: <ol style="list-style-type: none"> <li>Vertical or horizontal polarisation (whichever gave the higher emission level over a full rotation of the EUT) was chosen.</li> <li>The EUT was then rotated to the direction that gave the maximum emission.</li> <li>Finally, the antenna height was adjusted to the height that gave the maximum emission.</li> </ol> </li> <li>For emission frequencies measured below and above 1GHz, set the spectrum analyzer on a 100kHz and 1MHz resolution bandwidth respectively for each frequency measured.</li> <li>Steps 2 and 3 were repeated for the next frequency point, until all selected frequency points were measured.</li> </ol>
-----------	---

Remark	
Result	<input checked="" type="checkbox"/> Pass <input type="checkbox"/> Fail

Test Report No.	15020981-FCC-E
Page	15 of 34

Test Data	<input checked="" type="checkbox"/> Yes	<input type="checkbox"/> N/A
Test Plot	<input checked="" type="checkbox"/> Yes	<input type="checkbox"/> N/A

### Data sample

Frequency (MHz)	Quasi Peak (dBμV/m)	Azimuth	Polarity (H/V)	Height (cm)	Factors (dB)	Limit (dBμV/m)	Margin (dB)
xxx	32.23	181.00	H	350.00	-38.23	40.00	-7.77

Frequency (MHz) = Emission frequency in MHz

Quasi-Peak (dBμV/m)= Receiver Reading(dBμV/m)+ Factor(dB)

Azimuth=Position of turn table

Polarity=Polarity of Receiver antenna

Height(cm)= Height of Receiver antenna

Factor (dB)=Antenna factor + cable loss- antenna gain

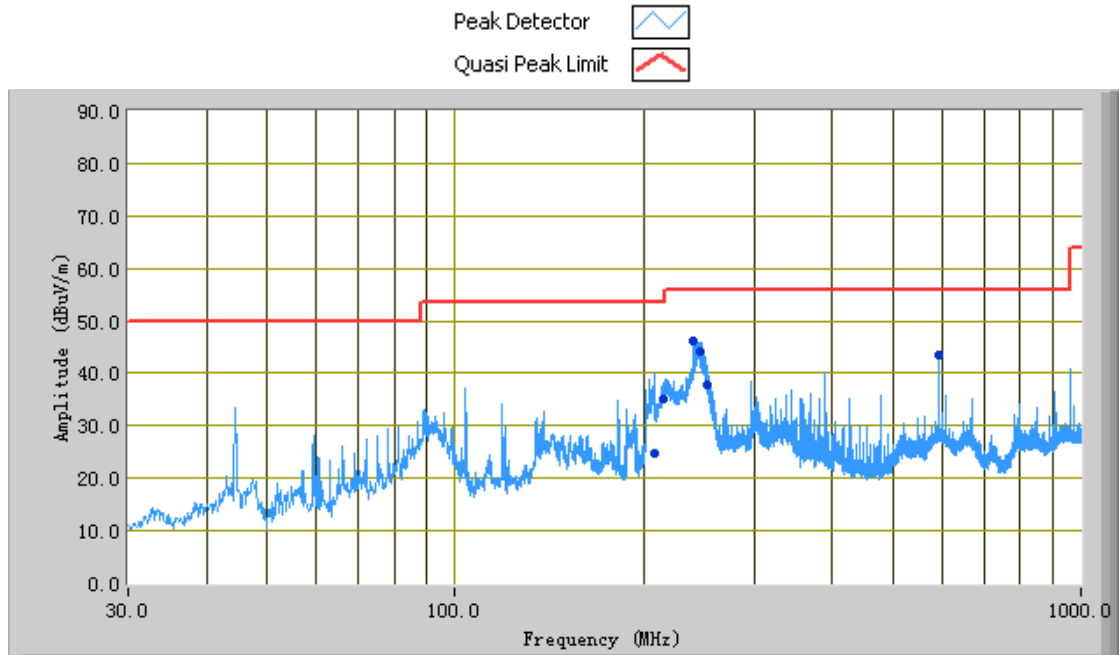
Limit (dBμV/m)=Limit stated in standard

### Calculation Formula:

Margin (dB)=Quasi Peak (dBμV/m) – limit (dBμV/m)

Test Mode:	Normal Working Mode
------------	---------------------

(Below 1GHz)



*Test Data*

Horizontal Polarity Plot @3m



Frequency (MHz)	Quasi Peak (dBuV/m)	Azimuth	Polarity (H/V)	Height (cm)	Factors (dB)	Limit (dBuV/m)	Margin (dB)
246.19	44.19	181.00	H	131.00	-28.57	56.00	-11.81
240.00	46.09	41.00	H	130.00	-28.50	56.00	-9.91
594.01	43.38	320.00	H	100.00	-21.15	56.00	-12.62
207.53	24.77	289.00	H	99.00	-30.96	53.50	-28.73
214.67	35.27	53.00	H	124.00	-30.43	53.50	-18.23
253.11	37.74	172.00	H	114.00	-28.64	56.00	-18.26

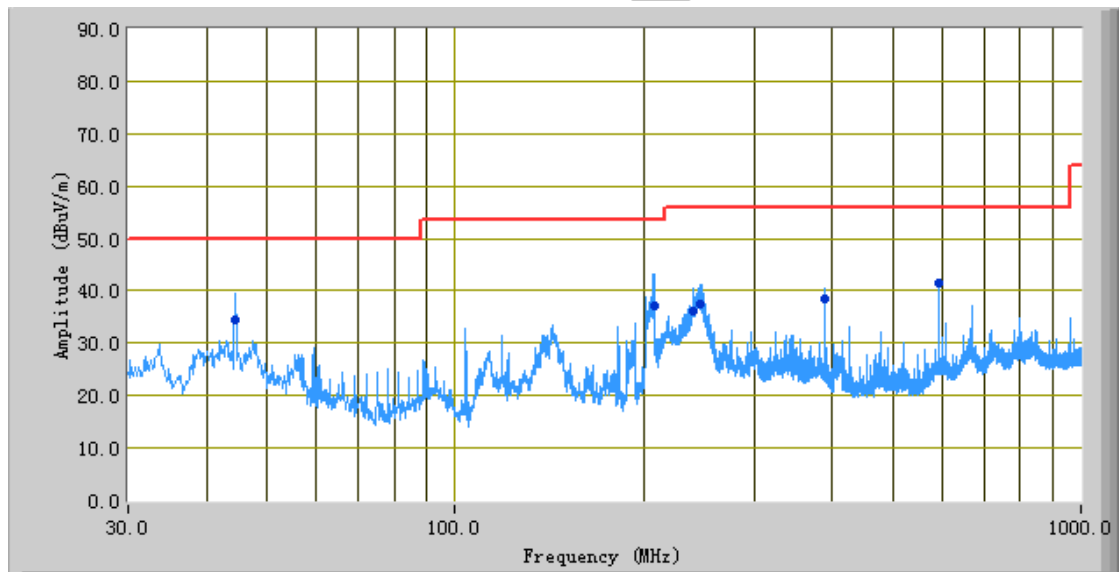
Note: During the test, we check both VGA Mode and HDMI Mode, and the HDMI Mode is worse than VGA Mode , the test data only show HDMI Mode.



Test Mode:	Normal Working Mode
------------	---------------------

(Below 1GHz)

Peak Detector   
Quasi Peak Limit 



**Test Data**

**Vertical Polarity Plot @3m**

Frequency (MHz)	Quasi Peak (dBμV/m)	Azimuth	Polarity (H/V)	Height (cm)	Factors (dB)	Limit (dBμV/m)	Margin (dB)
207.58	37.03	349.00	V	111.00	-31.63	53.50	-16.47
44.59	34.54	241.00	V	104.00	-31.65	50.00	-15.46
245.41	37.56	151.00	V	121.00	-29.87	56.00	-18.44
594.01	41.49	196.00	V	100.00	-23.58	56.00	-14.51
240.73	36.25	165.00	V	105.00	-29.90	56.00	-19.75
390.01	38.52	123.00	V	299.00	-28.28	56.00	-17.48

Note: The highest frequency of the internal sources of the EUT is less than 108MHz, so the measurement shall only be made up to 1GHz.

## Annex A. TEST INSTRUMENT

Instrument	Model	Serial #	Cal Date	Cal Due	In use
<b>AC Line Conducted Emissions</b>					
R&S EMI Test Receiver	ESPI3	101216	11/04/2014	11/03/2015	<input checked="" type="checkbox"/>
V-LISN	ESH3-Z5	838979/005	09/27/2014	09/26/2015	<input checked="" type="checkbox"/>
Com-Power Transient Limiter	LIT-153	531021	10/09/2014	10/08/2015	<input checked="" type="checkbox"/>
SIEMIC Labview Conducted Emissions software	V1.0	N/A	N/A	N/A	<input checked="" type="checkbox"/>
<b>Radiated Emissions</b>					
Agilent Technologies Spectrum Analyzer	N9010A	MY47191130	03/11/2015	03/10/2016	N/A
R&S EMI Receiver	ESPI3	101216	11/04/2014	11/03/2015	<input checked="" type="checkbox"/>
Antenna (30MHz~6GHz)	JB6	A121411	06/04/2015	06/03/2016	<input checked="" type="checkbox"/>
INFOMW Antenna (1 ~18GHz)	JXTXLB-10180	J2031081120092	10/09/2014	10/08/2015	N/A
Hp Agilent Pre-Amplifier	8447F	1937A01160	10/27/2014	10/26/2015	<input checked="" type="checkbox"/>
Agilent Pre-Amplifier (0.1 ~ 18GHz)	HP8449B	N/A	04/29/2015	04/28/2016	N/A
SIEMIC Labview Radiated Emissions software	V1.0	N/A	N/A	N/A	<input checked="" type="checkbox"/>

## Annex B. EUT And Test Setup Photographs

### Annex B.i. Photograph EUT Internal Photo



All Packages – Front View



Top View of EUT

Test Report No.	15020981-FCC-E
Page	20 of 34



Bottom View of EUT

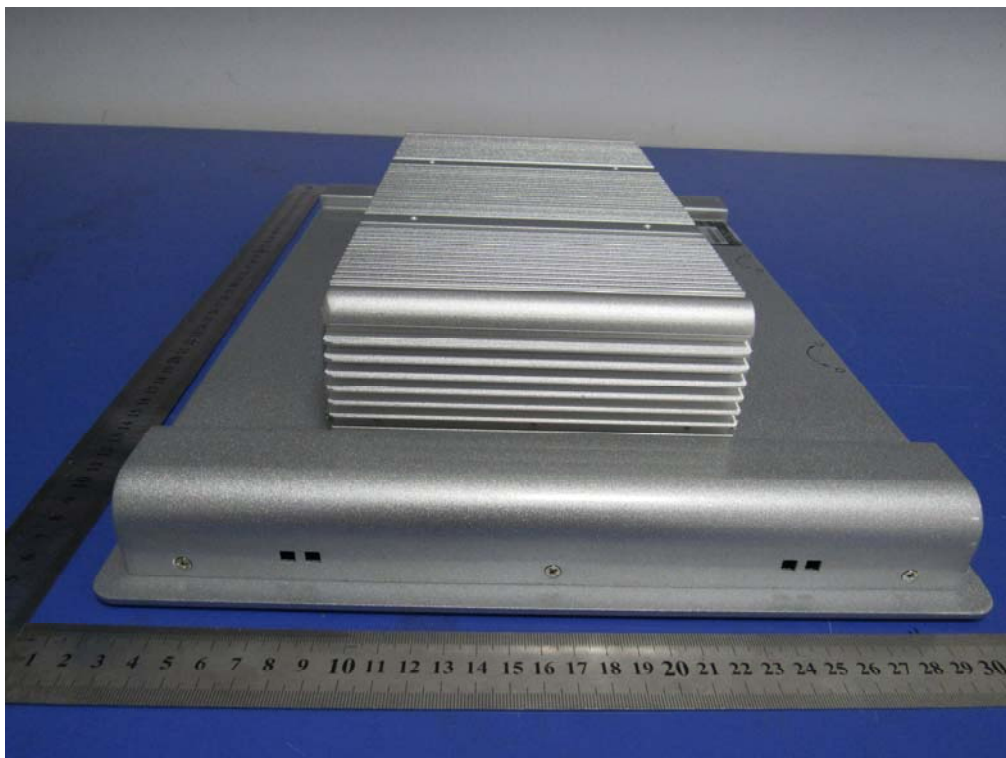


Front View of EUT

Test Report No.	15020981-FCC-E
Page	21 of 34



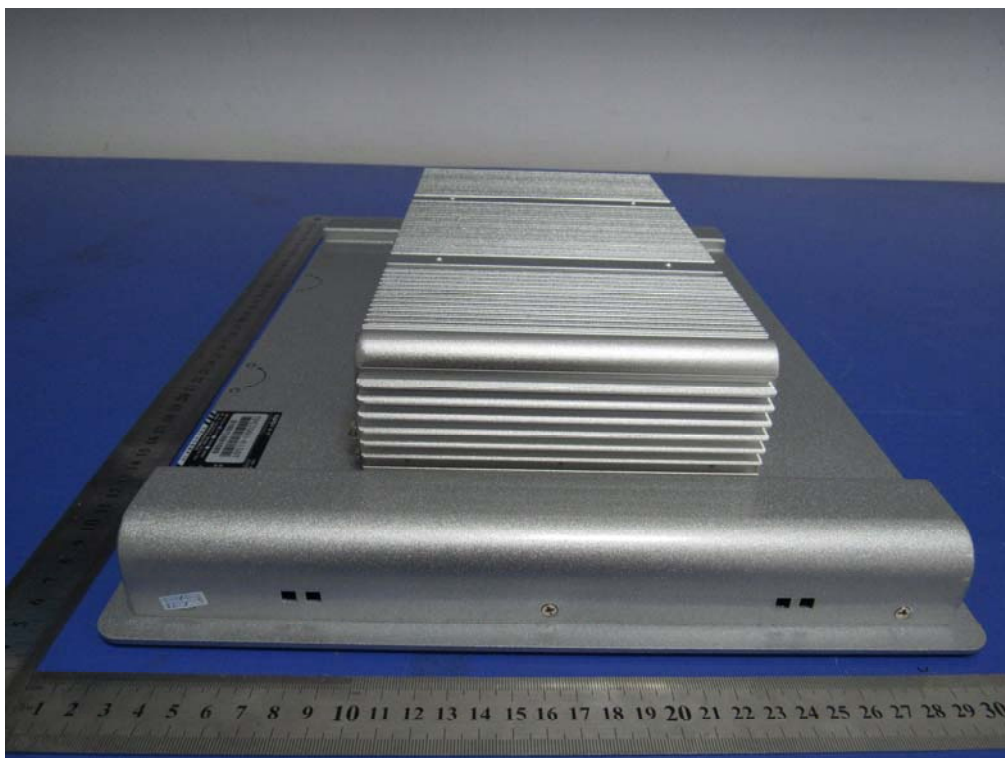
Rear View of EUT



Left View of EUT



Test Report No.	15020981-FCC-E
Page	22 of 34



Right View of EUT

**Annex B.ii. Photograph EUT Internal Photo**

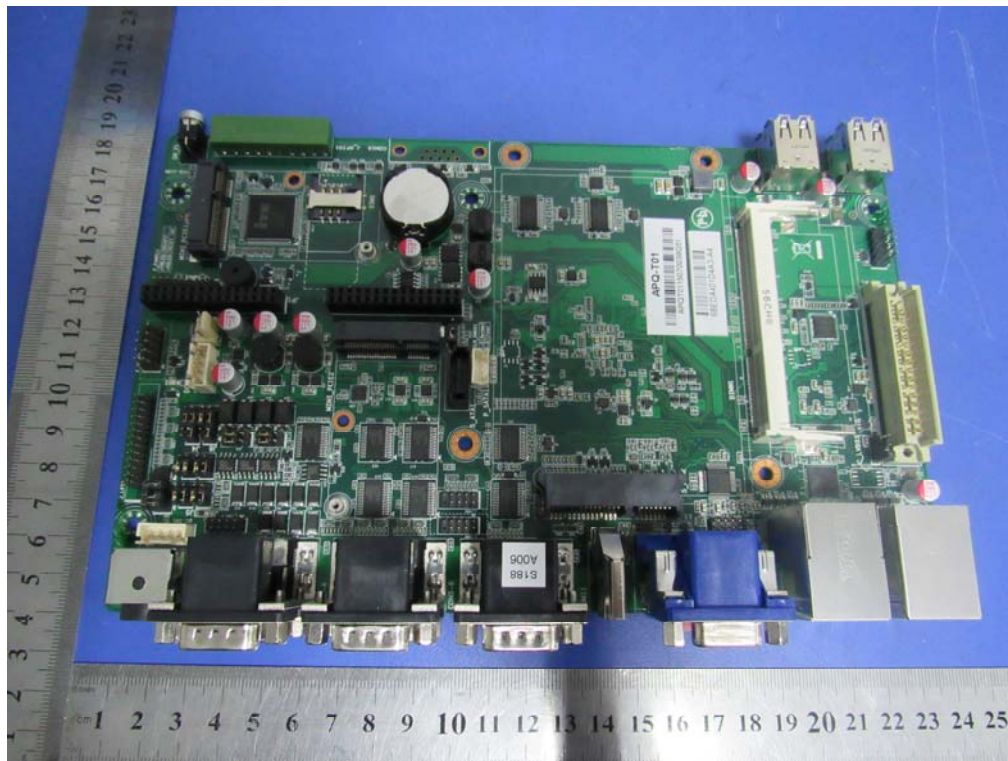


Uncover 1 - Front View



Uncover 2 - Front View

Test Report No.	15020981-FCC-E
Page	24 of 34



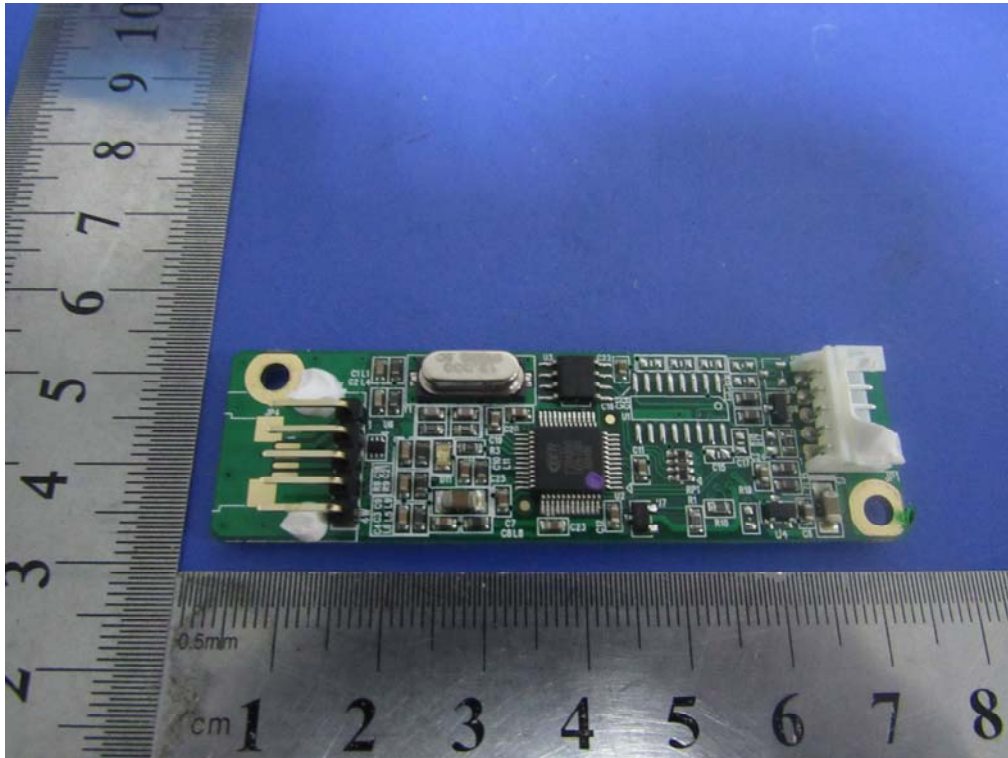
EUT PCBA 1– Front View



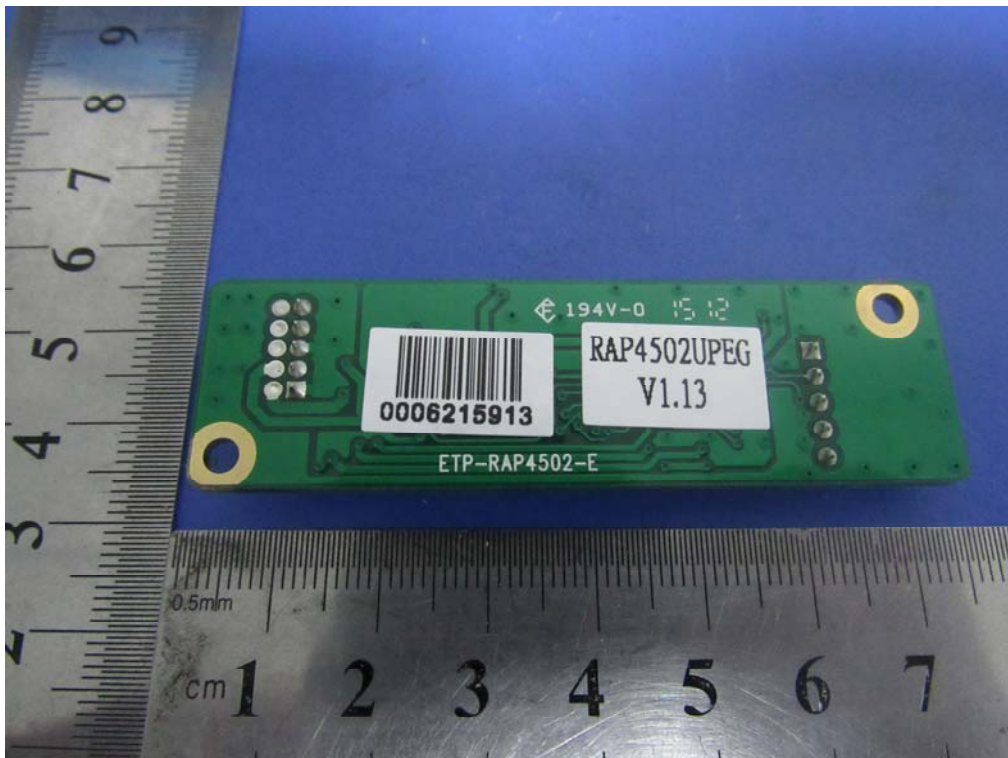
EUT PCBA 1– Rear View



Test Report No.	15020981-FCC-E
Page	25 of 34

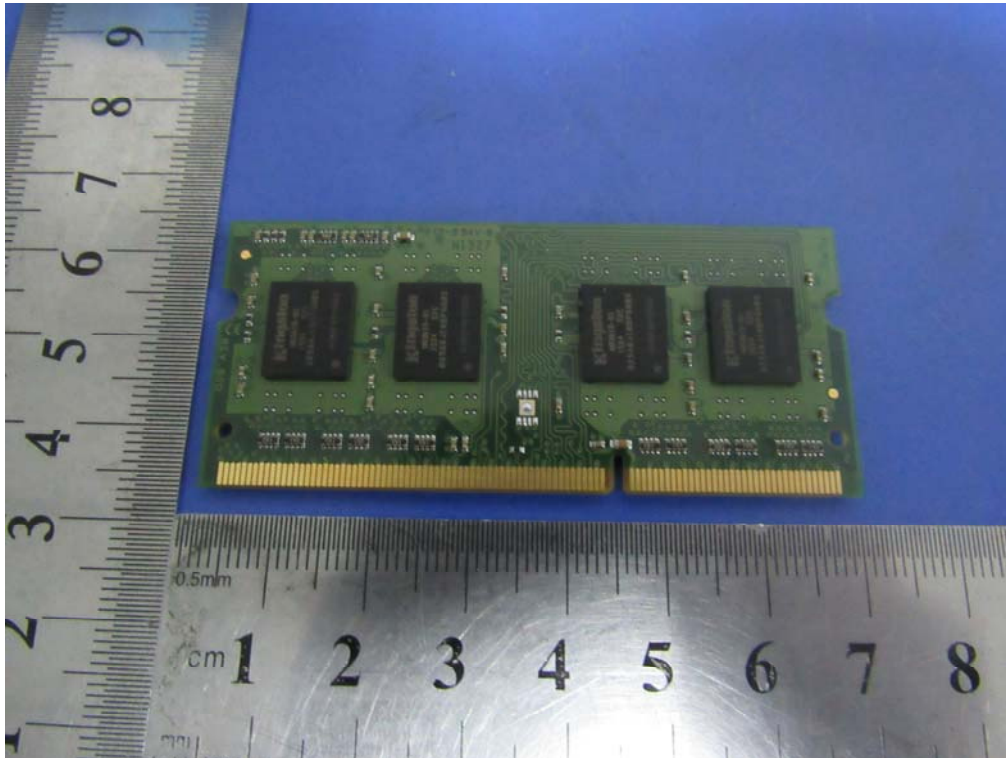


EUT PCBA 2- Front View



EUT PCBA 2- Rear View

Test Report No.	15020981-FCC-E
Page	26 of 34



EUT Internal Storage – Front View



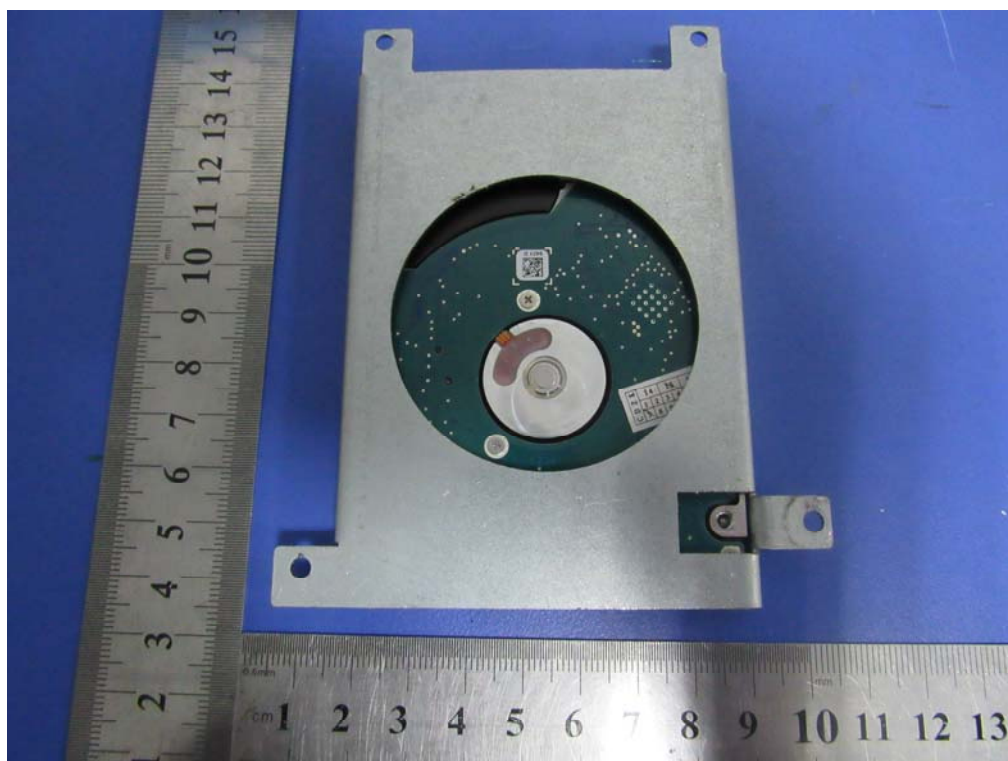
EUT Internal Storage – Rear View



Test Report No.	15020981-FCC-E
Page	27 of 34



EUT HDD- Front View



EUT HDD- Rear View

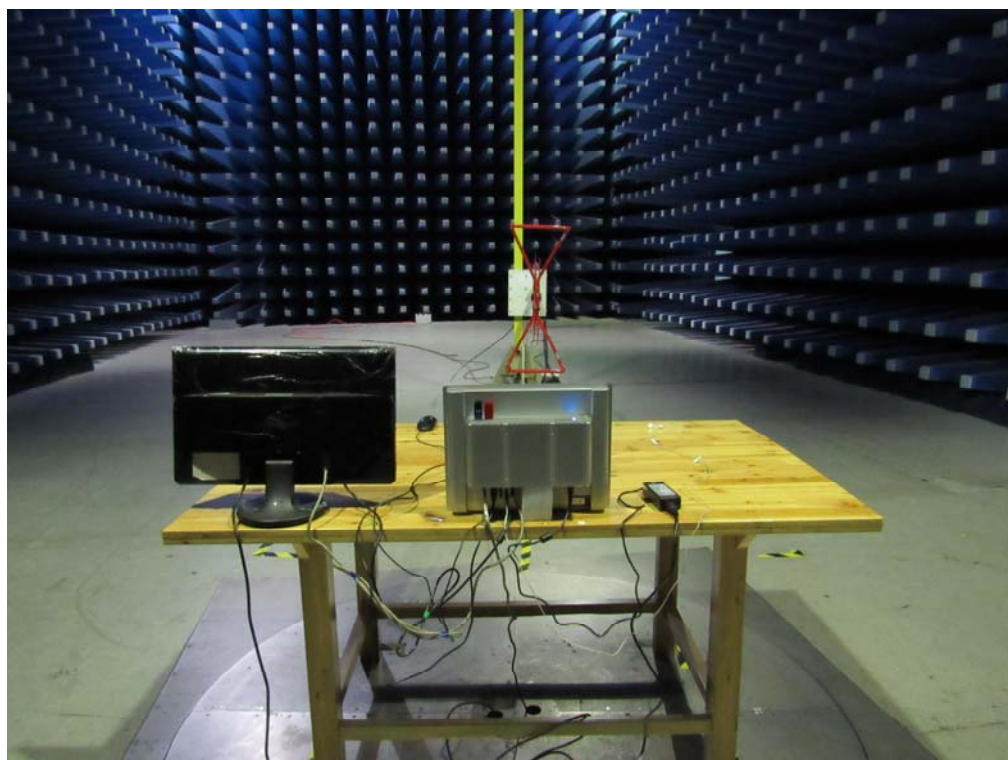
**Annex B.iii. Photograph Test Setup Photo**



Conducted Emissions Setup Front View



Conducted Emissions Setup Side View

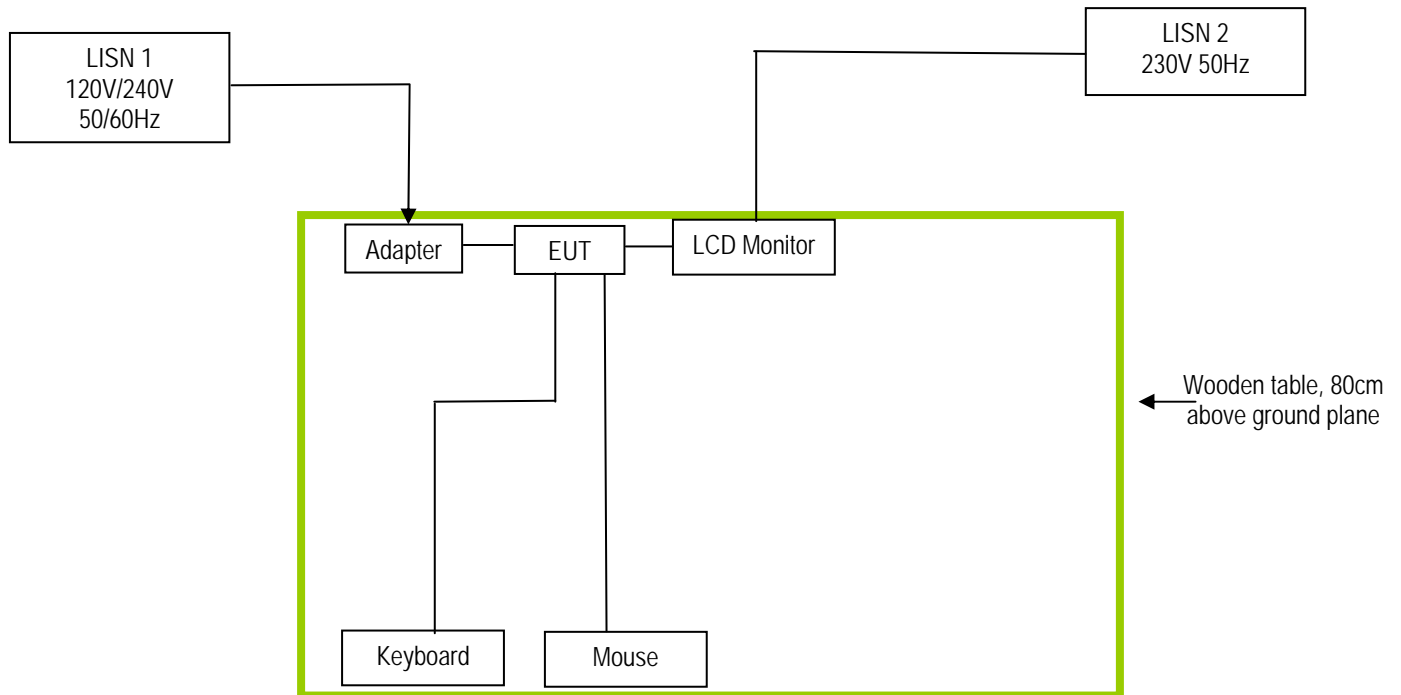


Radiated Emissions Setup Below 1GHz Rear View

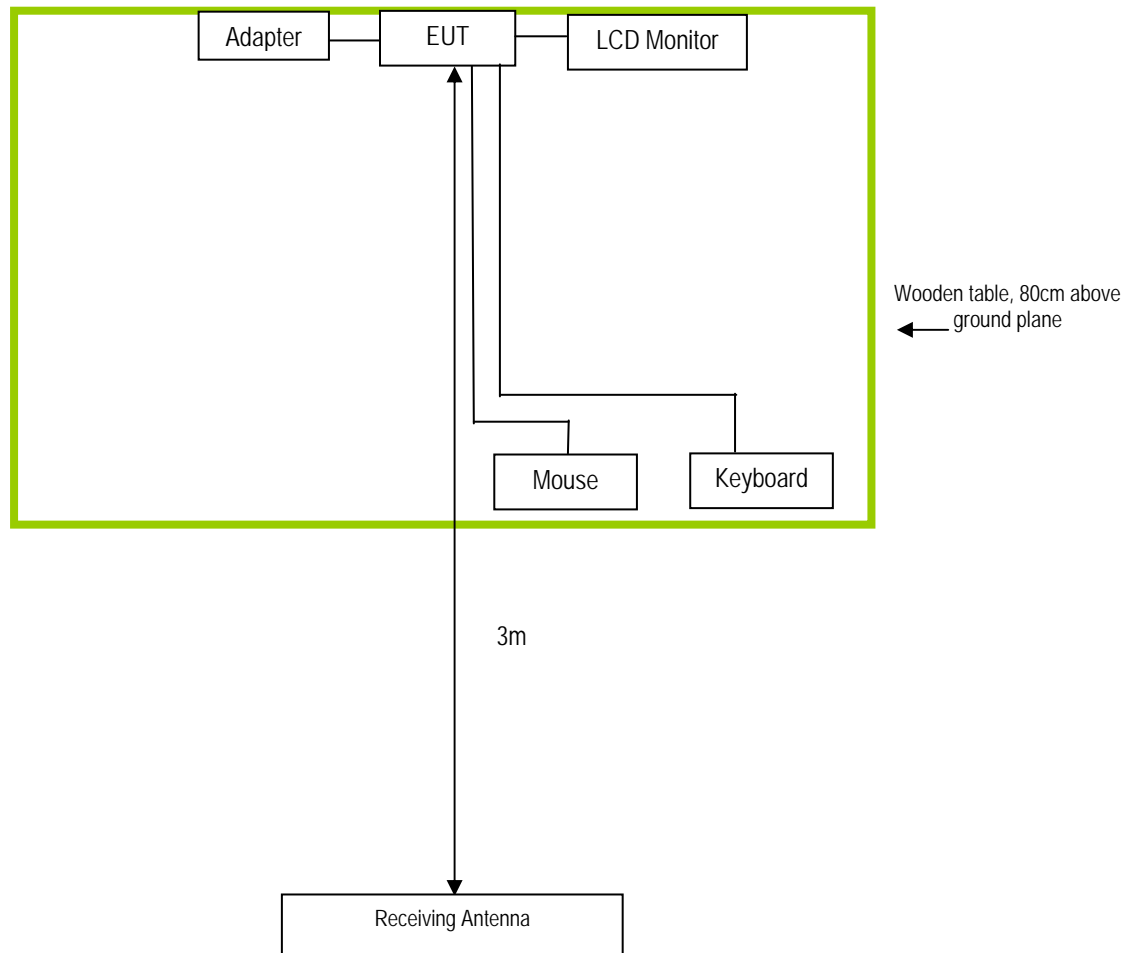
## Annex C. TEST SETUP AND SUPPORTING EQUIPMENT

### Annex C.i. TEST SET UP BLOCK

#### Block Configuration Diagram for Conducted Emissions



## Block Configuration Diagram for Radiated Emissions



### **Annex C. ii. SUPPORTING EQUIPMENT DESCRIPTION**

The following is a description of supporting equipment and details of cables used with the EUT.

Manufacturer	Equipment Description	Model	Calibration Due Date
Logitech	Keyboard	MIK200	N/A
Logitech	Mouse	MIK200	N/A
Acer	LCD Monitor	X233H	N/A



Test Report No.	15020981-FCC-E
Page	33 of 34

## Annex D. User Manual / Block Diagram / Schematics / Partlist

Please see Attachment

## Annex E. DECLARATION OF SIMILARITY

Chengdu APQ Automation Technology Co., Ltd.

9/16/2015

To: SIEMIC, INC.

775 Montague Expressway,

Milpitas, CA 95035

USA

### Statement

We hereby state that the industrial touch tablet PC of our model number TPC7000(15 inch) and serial numbers TPC7000-1(10.4 inch)、TPC7000-5(12.1 inch)、TPC7000-6(17 inch)、TPC7000-7(19 inch) have the same constructions, circuit diagram and PCB layout. Only model size different.

Sincerely,

Client's signature: *peng Rong He*



Client's name / title: chengdu APQ Automation Technology co.,ltd.

Contact information / address : ChengJia Road NO.6 in Sichuan Province Chengdu  
Chenghua District City Longtan Industrial Park