



CANDY HOUSE

[www.candyhouse.co](http://www.candyhouse.co)

# SESAME



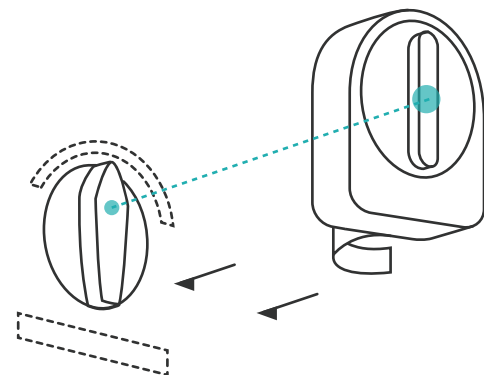
You are cautioned that changes or modifications not expressly approved by the part responsible for compliance could void the user's authority to operate the equipment.

This equipment has been tested and found to comply with the limits for a Class B digital device, pursuant to part 15 of the FCC rules. These limits are designed to provide reasonable protection against harmful interference in a residential installation. This equipment generates, uses and can radiate radio frequency energy and, if not installed and used in accordance with the instructions, may cause harmful interference to radio communications. However, there is no guarantee that interference will not occur in a particular installation. If this equipment does cause harmful interference to radio or television reception, which can be determined by turning the equipment off and on, the user is encouraged to try to correct the interference by one or more of the following measures:

- Reorient or relocate the receiving antenna.
- Increase the separation between the equipment and receiver.
- Connect the equipment into an outlet on a circuit different from that to which the receiver is connected.
- Consult the dealer or an experienced radio/TV technician for help.

This device complies with Part 15 of the FCC Rules. Operation is subject to the following two conditions:  
1) this device may not cause harmful interference, and  
2) this device must accept any interference received, including interference that may cause undesired operation of the device.

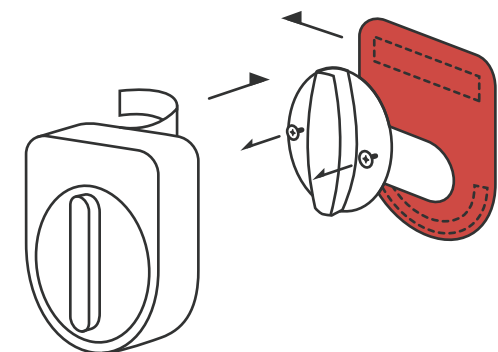
FCC RF Radiation Exposure Statement:  
This Transmitter must not be co-located or operating in conjunction with any other antenna or transmitter. This equipment complies with FCC RF radiation exposure limits set forth for an uncontrolled environment. This equipment should be installed and operated with a minimum distance of 20 centimeters between the radiator and your body.



Attach Sesame to the deadbolt using the included 3M Command™ strips. Please approximately match the rotation centers of the Sesame to your lock.

4  
3

**(Optional)** The Red Plate is provided as an alternative surface for when the surface around the deadbolt is not smooth and/or flat enough to attach Sesame on. Loosen the screws of your deadbolt to slide the Red Plate between the deadbolt and the door.



Download the Sesame app and you're ready to go!

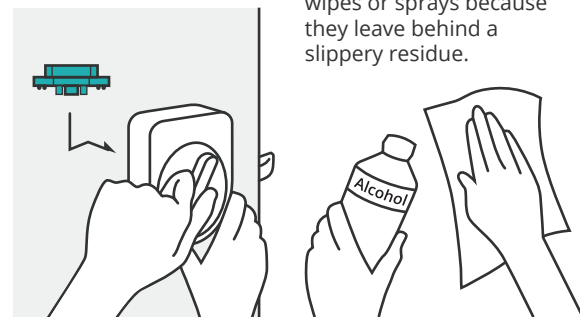
## To connect Sesame to your phone

5  
2

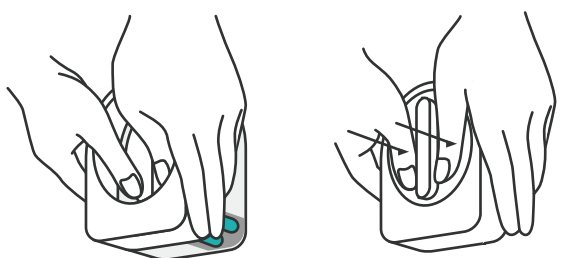
Ensure that you can manually rotate your lock with Sesame. If you have trouble rotating your lock, try switching or removing the adjustment clip based on the shape of your lock.

## To install

3M Command™ strips work best on smooth surfaces. Clean with isopropyl rubbing alcohol prior to installation for the best effects. Avoid household cleaners like wipes or sprays because they leave behind a slippery residue.



Press the center with your thumbs and lift the lid with your remaining fingers.  
After the lid is removed, the batteries will be revealed in the corner.

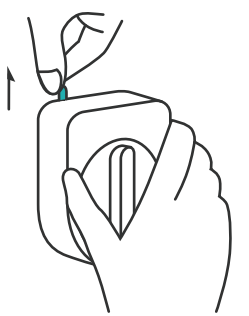


## To remove the lid and replace batteries

6  
1

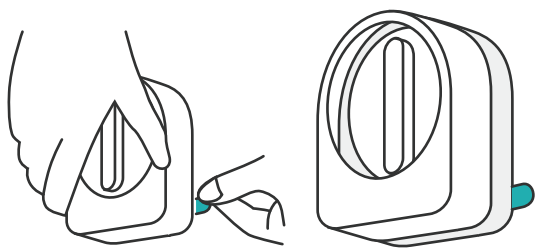


**Before you install**  
Pull the battery insulation tab from the top.



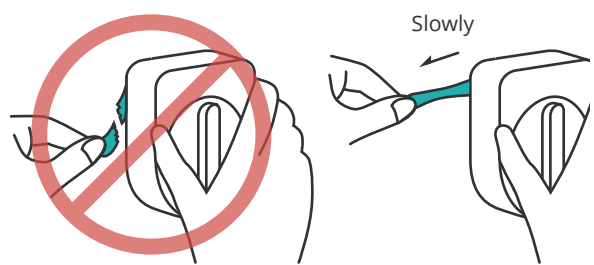
If the strip is not visible from the side of your Sesame, remove the lid (following instructions on the left) to reveal the strip.

Hold the base gently in place, but don't press it against the wall.



## To remove Sesame from the door

7  
8



Remember to never pull the strip towards you. Always pull the strip along the door as slowly as possible.

Slowly pull the strip straight along the door, keeping your hand against the door as you go. Keep stretching up to 15 inches (38 cm) until the hook releases from the strip.