

VegaAIS AtoN Station Internal Photos

VEGA INDUSTRIES LIMITED

21 Heriot Drive, Porirua 5022, New Zealand

Tel: +64 4 238 0200; Fax: +64 4 237 4392

E-mail: sales@vega.co.nz Web: <http://www.vega.co.nz>

Version History

Version	Released	Description
1.0.0	15 th Dec 2014	Initial Release

Copyright Notice

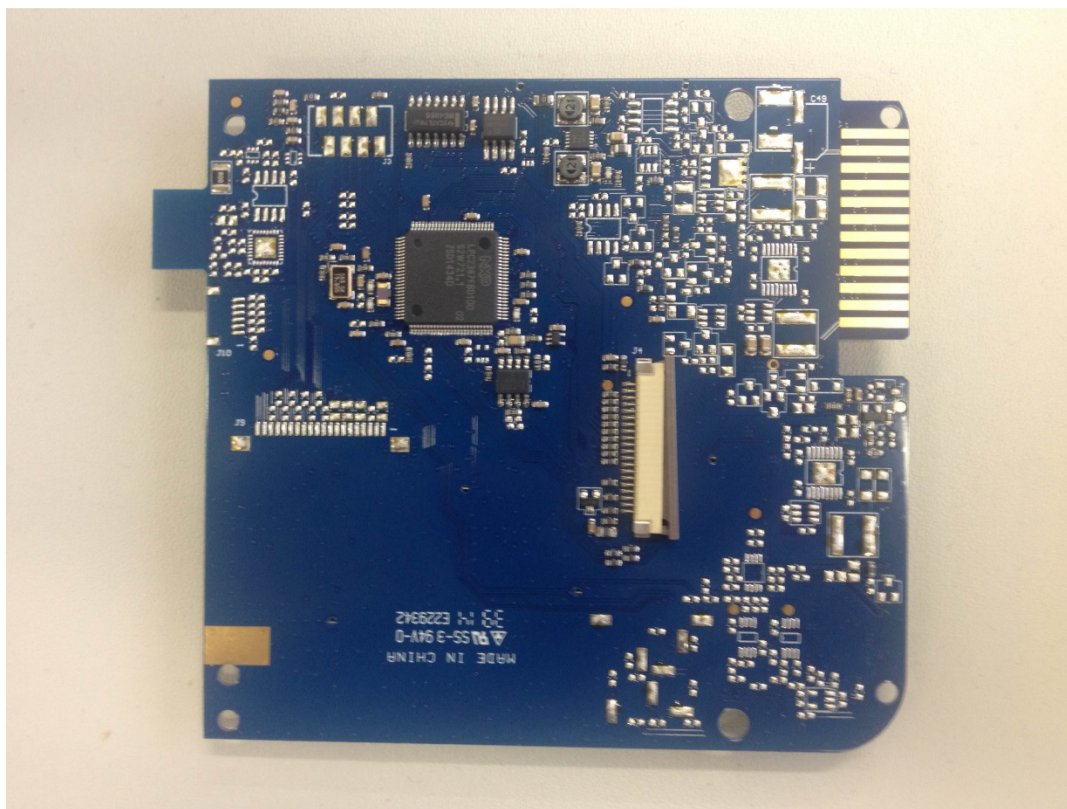
Copyright © 2014 Vega Industries Ltd. All rights are reserved.

The information contained within this document is the copyright of Vega Industries Ltd. No part of this document may be disclosed, reproduced or transmitted in any form, or by any means without the written permission of Vega Industries Ltd. The term document extends to all forms of media in which information may be embodied.

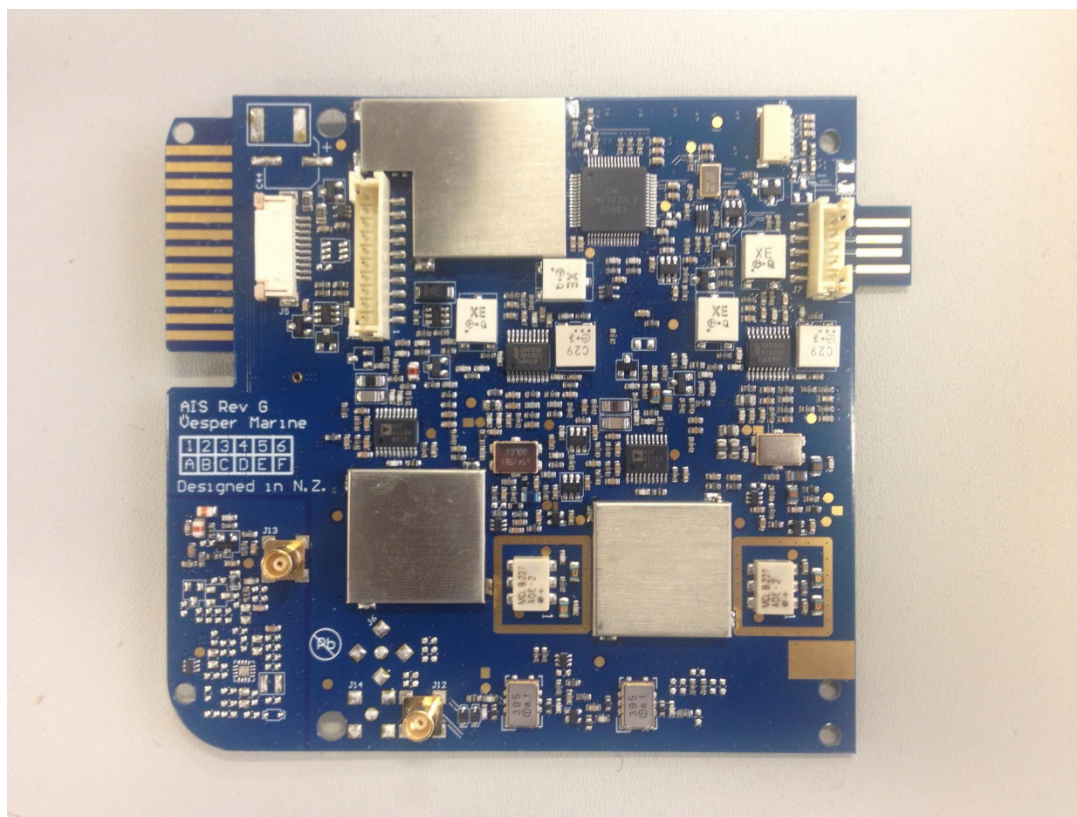
Product Identification

Product Family	VegaAIS AtoN Station
Manufacturer	Vega Industries Ltd, 17/21 Heriot Dr, Porirua 5022, New Zealand
OEM Module Manufacturer Details	Vesper Marine Ltd., 45 Sale St, Freeman's Bay, Auckland 1010, New Zealand
Model Numbers	VAIS-1S, VAIS-1E, VAIS-3S, VAIS-3E
Power Supply	10 – 36 VDC
Frequency Range	156.025 – 162.025 MHz
Transmit Power	41dBm (12.5W), 33dBm (2W)
Modulation Technique	FM GMSK
Channel Spacing	25kHz
Temperature Range	-30 - +60°C
Intended Users	Port Authorities, Harbourmasters, Maritime Authorities
Enclosure	IP68

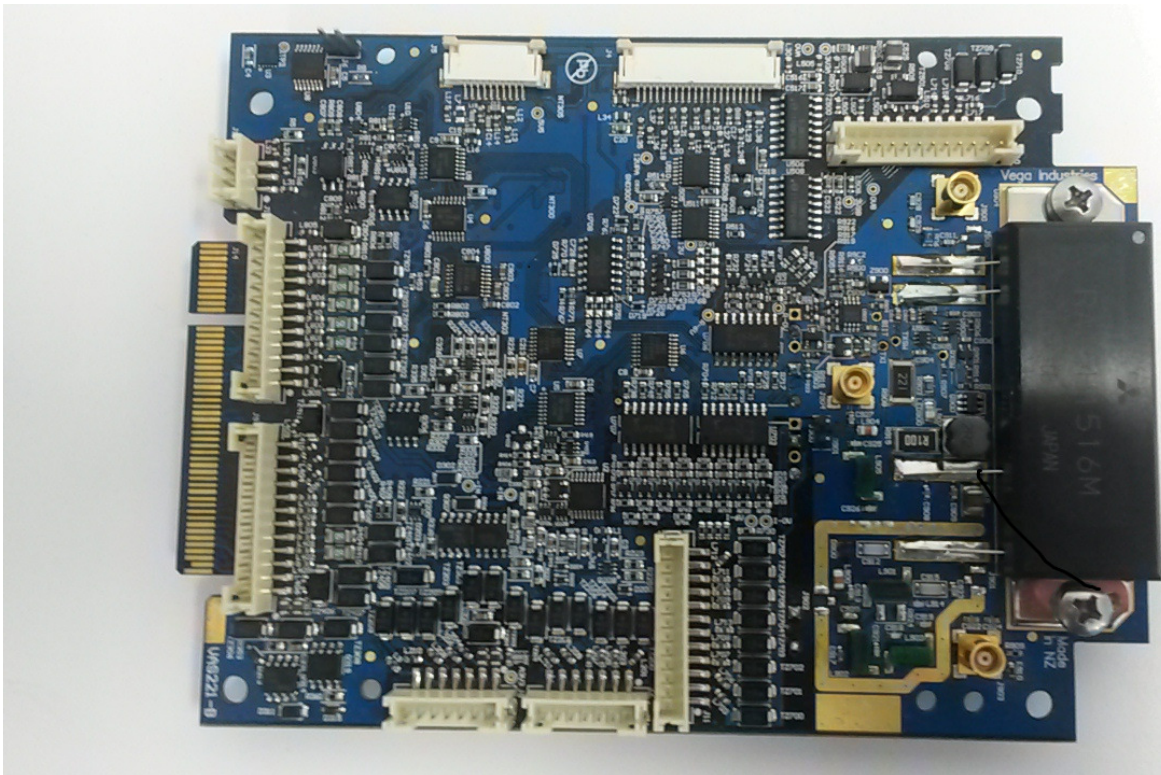
Internal Photos – PCB Assemblies



AIS Engine – top side



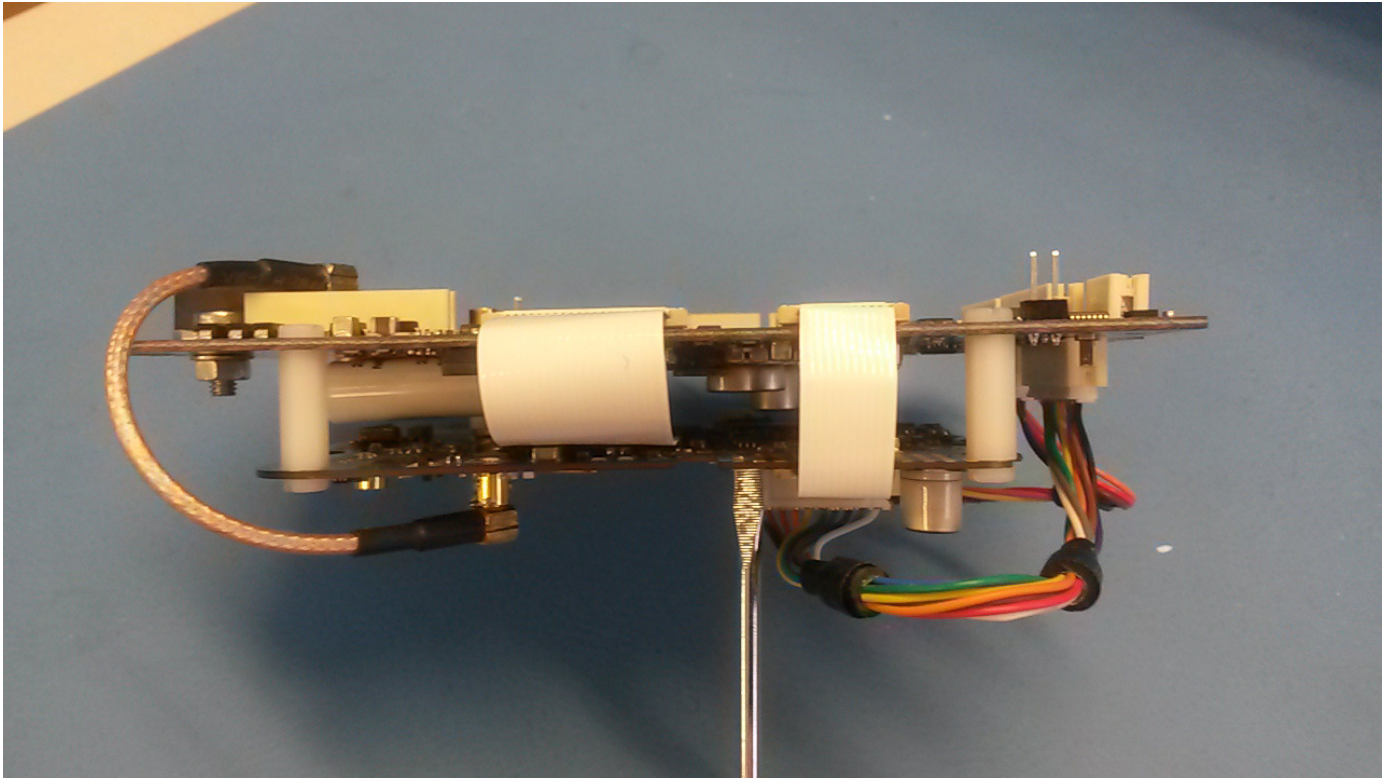
AIS Engine – bottom side



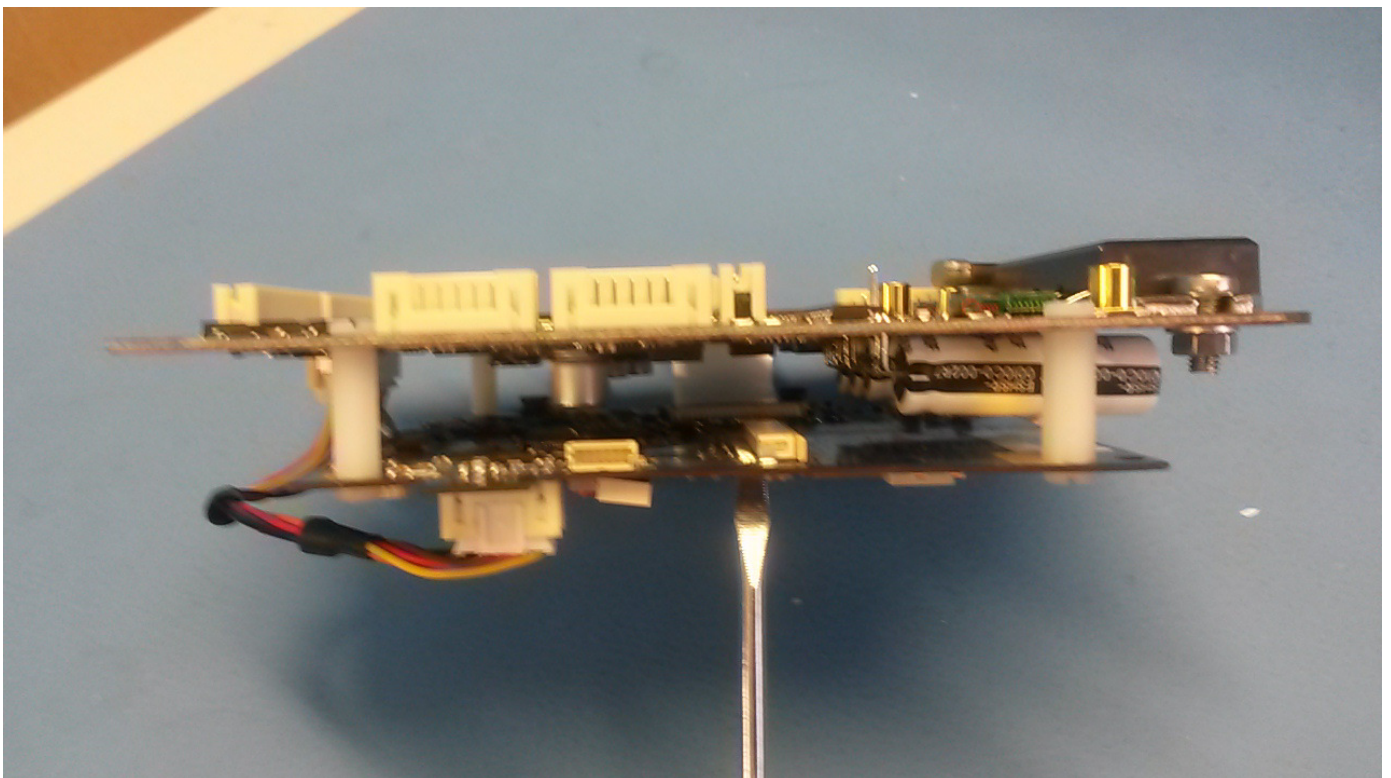
RF Amplifier and Monitoring daughterboard – top side



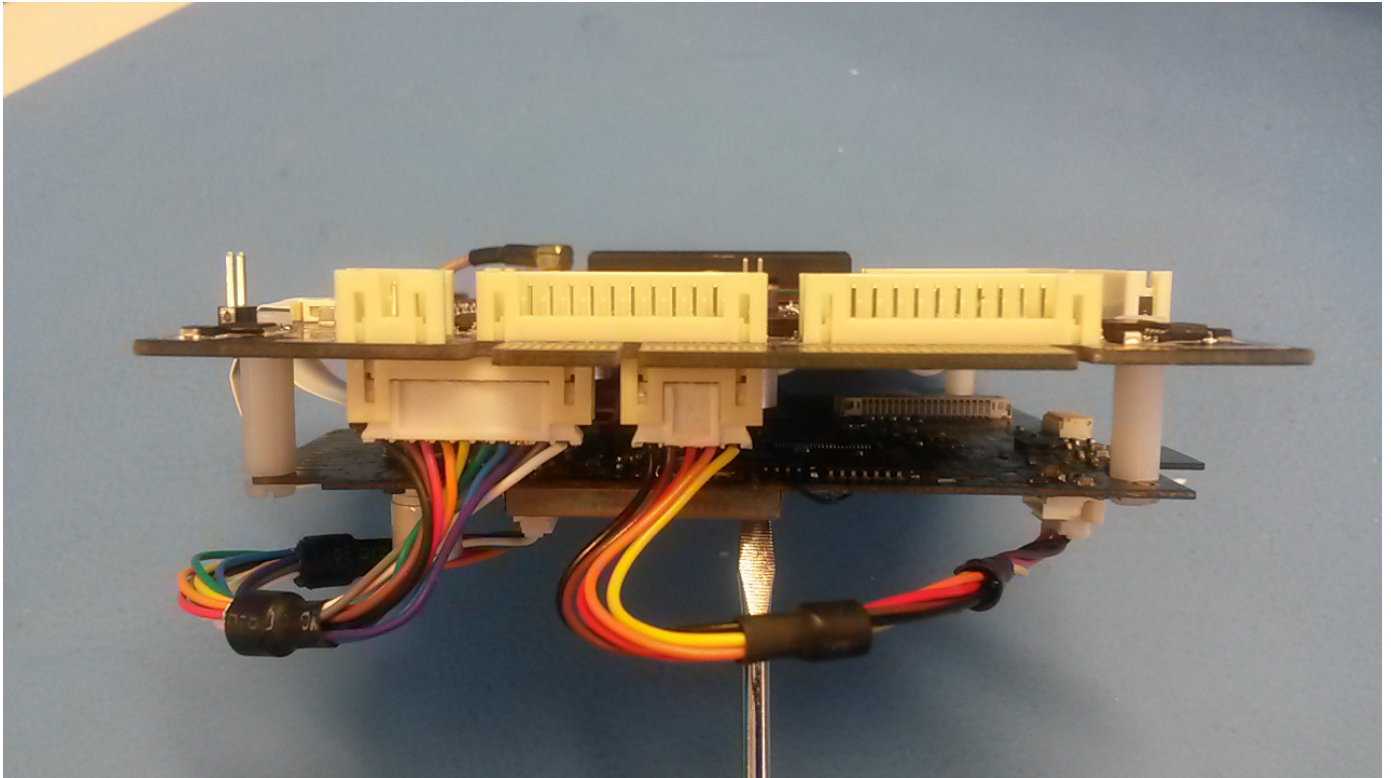
RF Amplifier and Monitoring daughterboard – bottom side



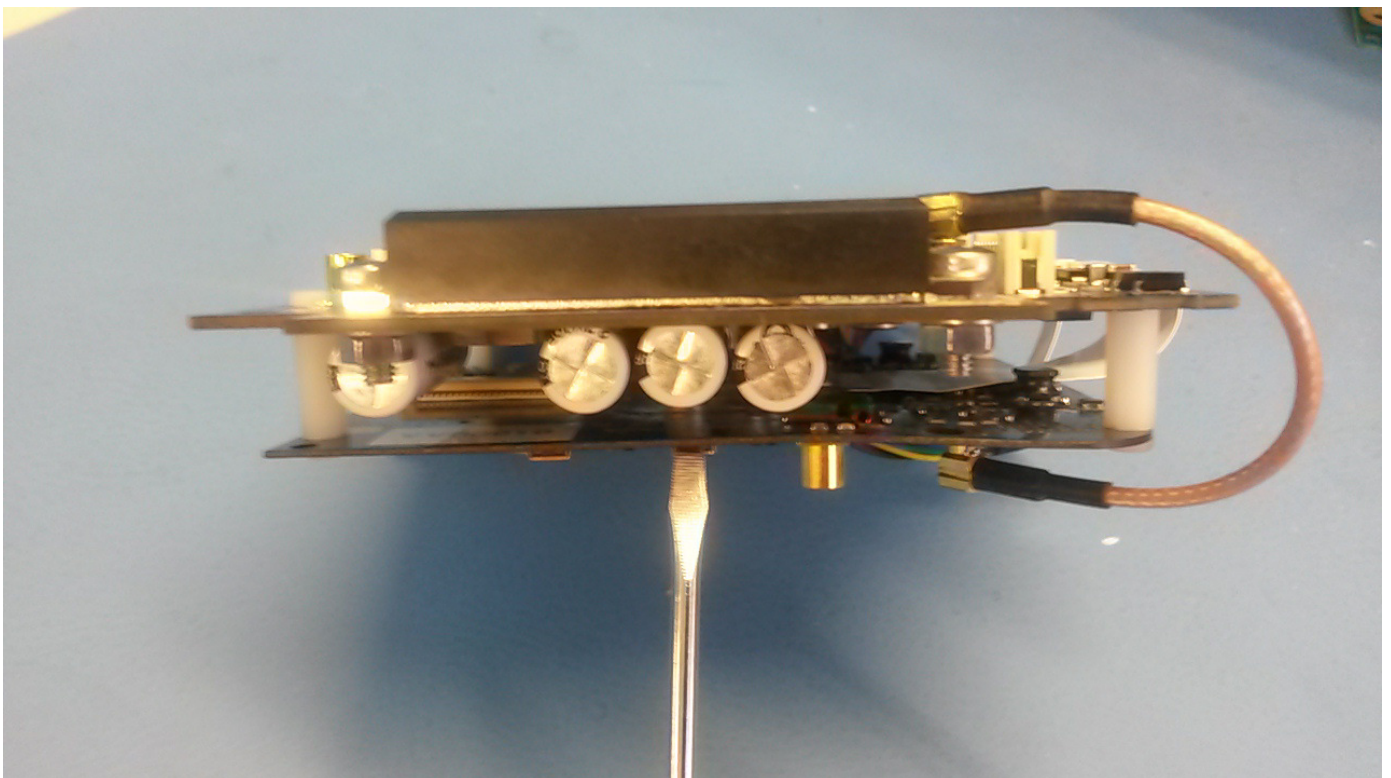
AIS Engine and Daughterboard Assembly – side view 1



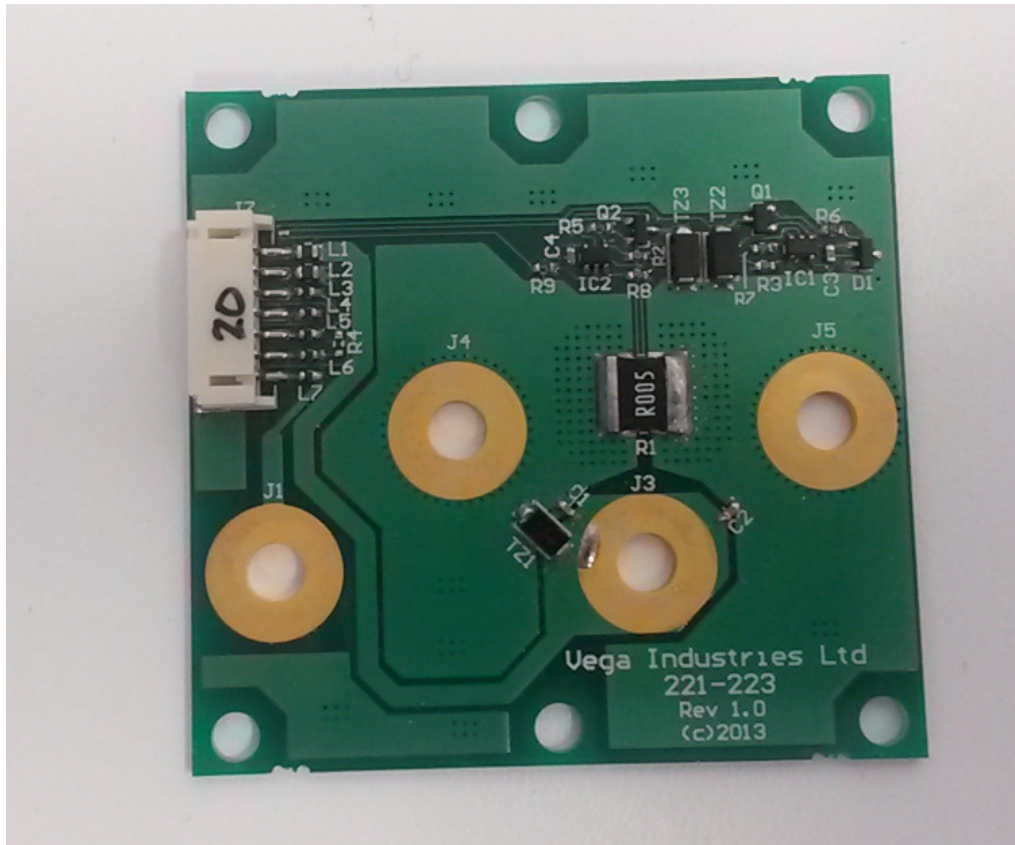
AIS Engine and Daughterboard Assembly – side view 2



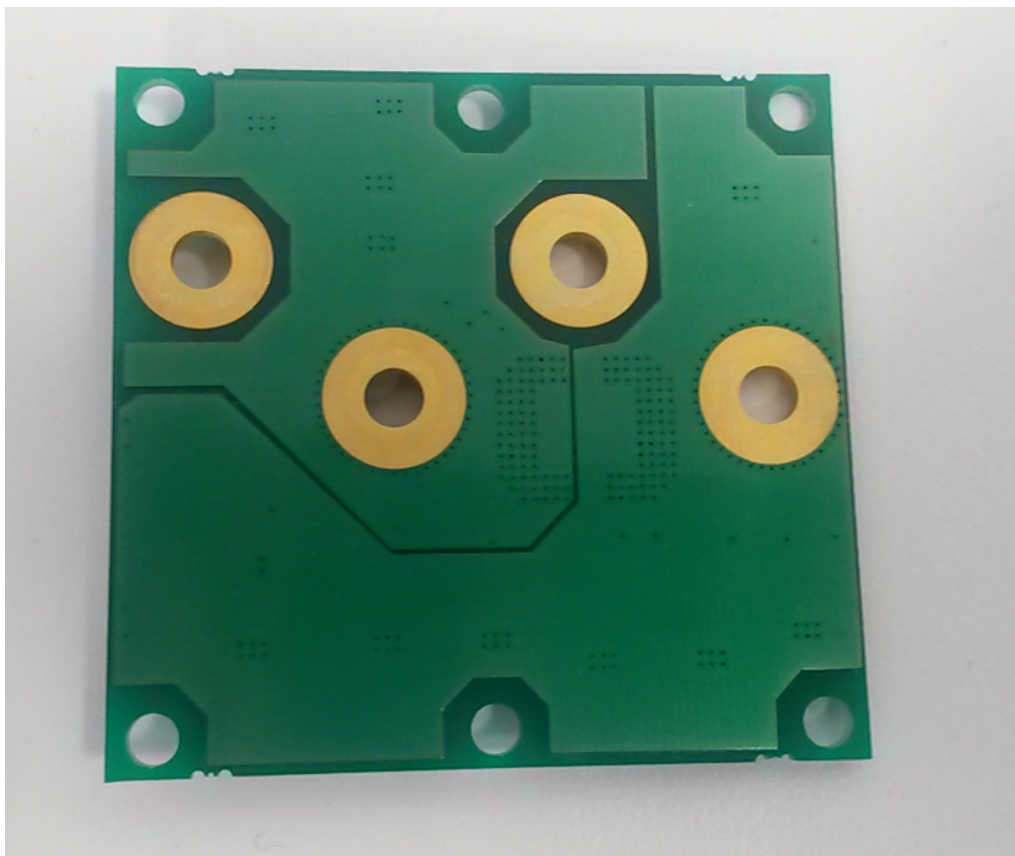
AIS Engine and Daughterboard Assembly – back view



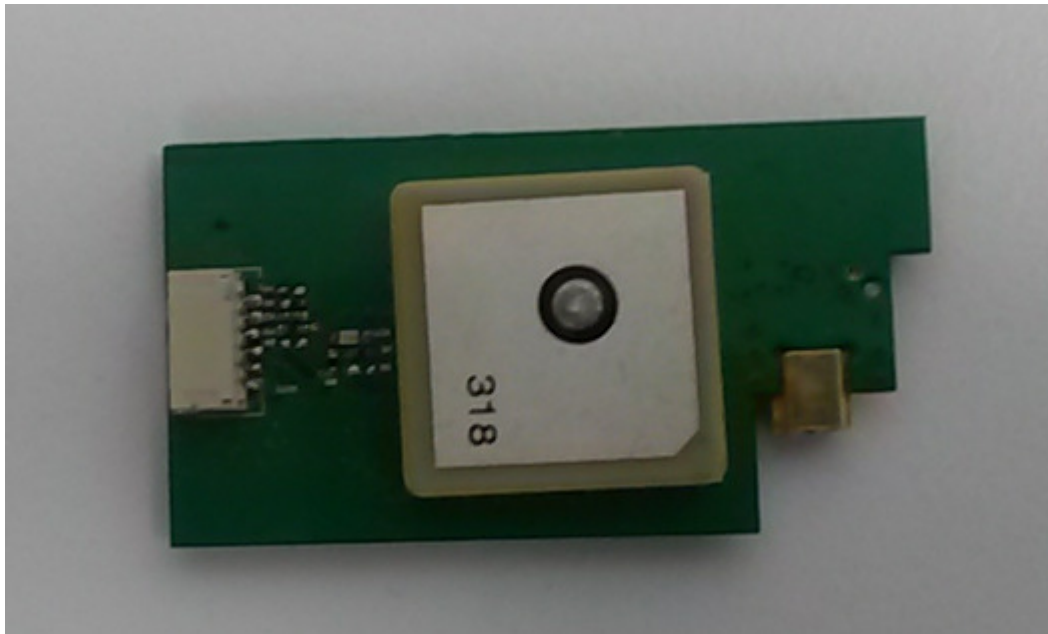
AIS Engine and Daughterboard Assembly – front view



Current Sensor board – top side



Current Sensor board – bottom side

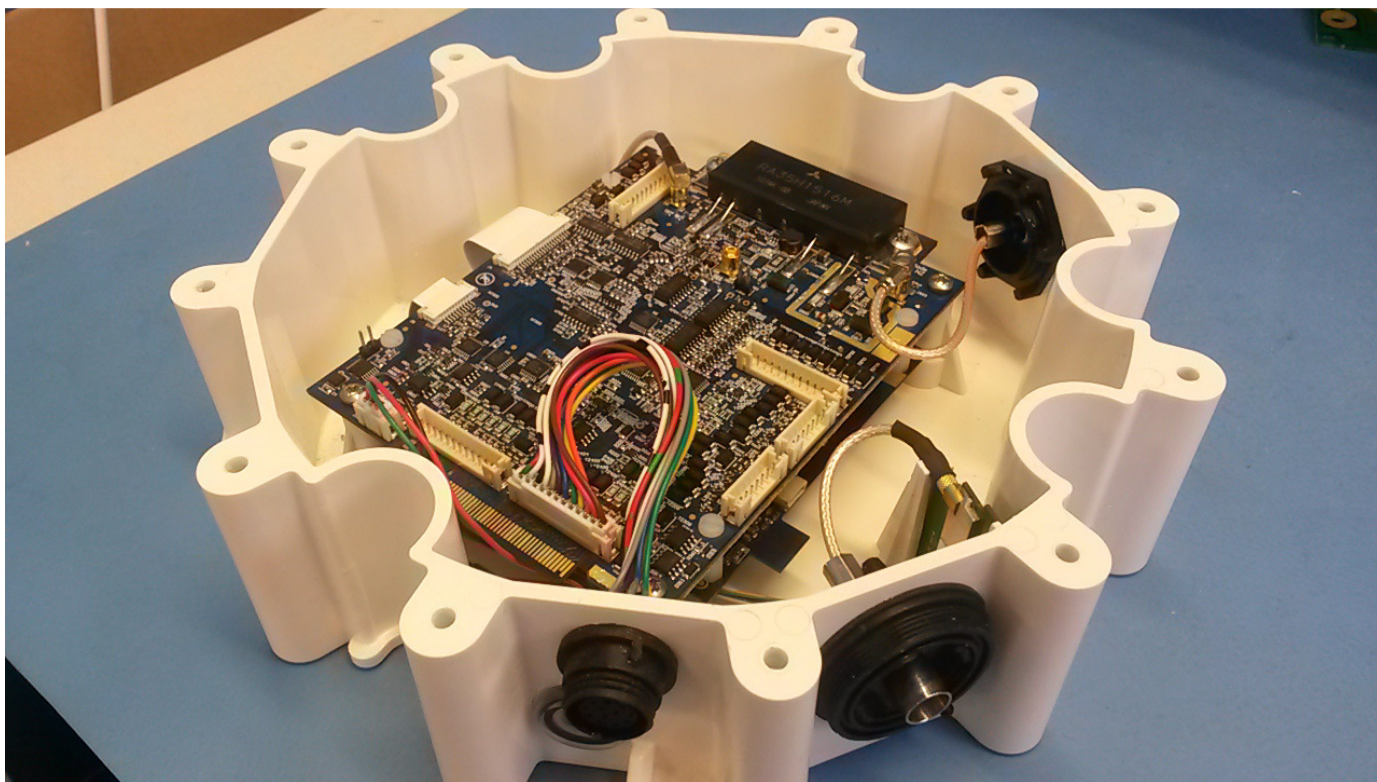


GPS module – top side

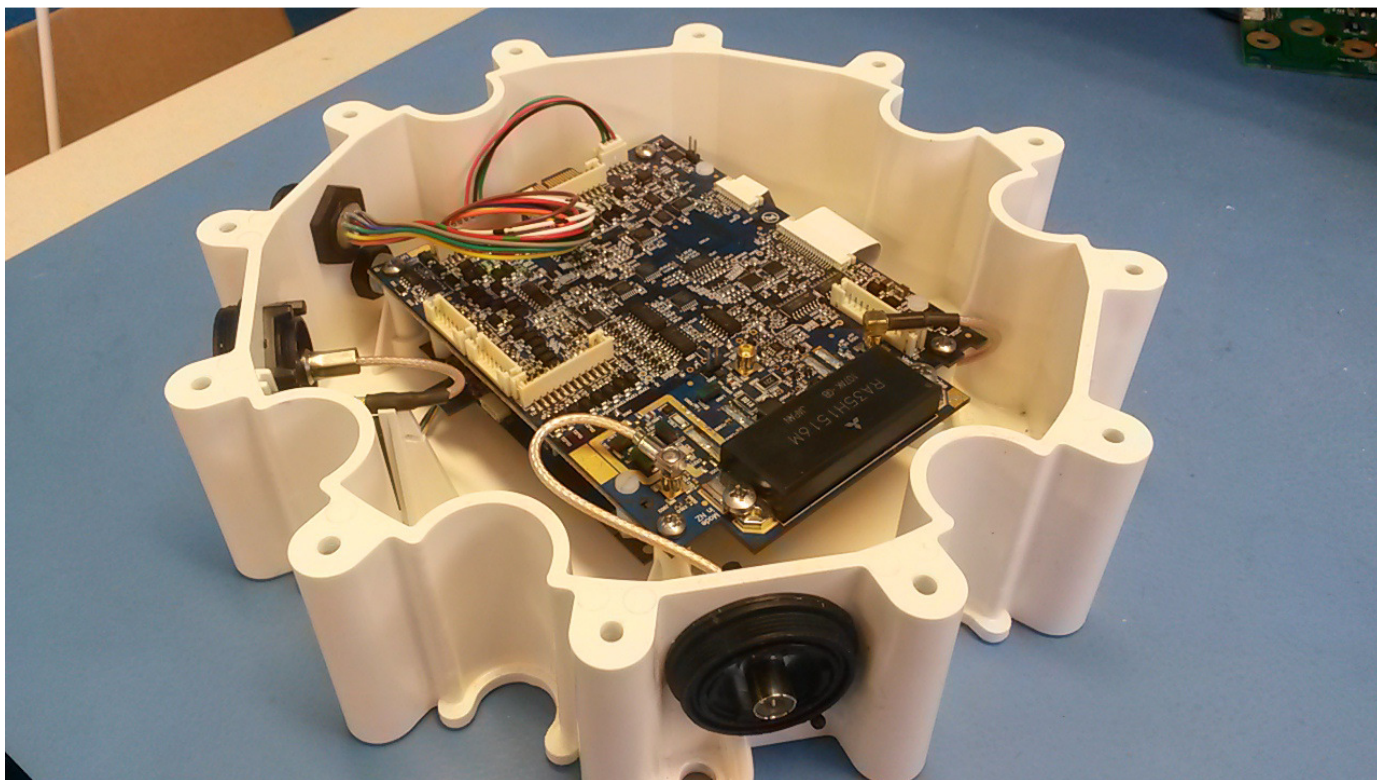


GPS module – bottom side

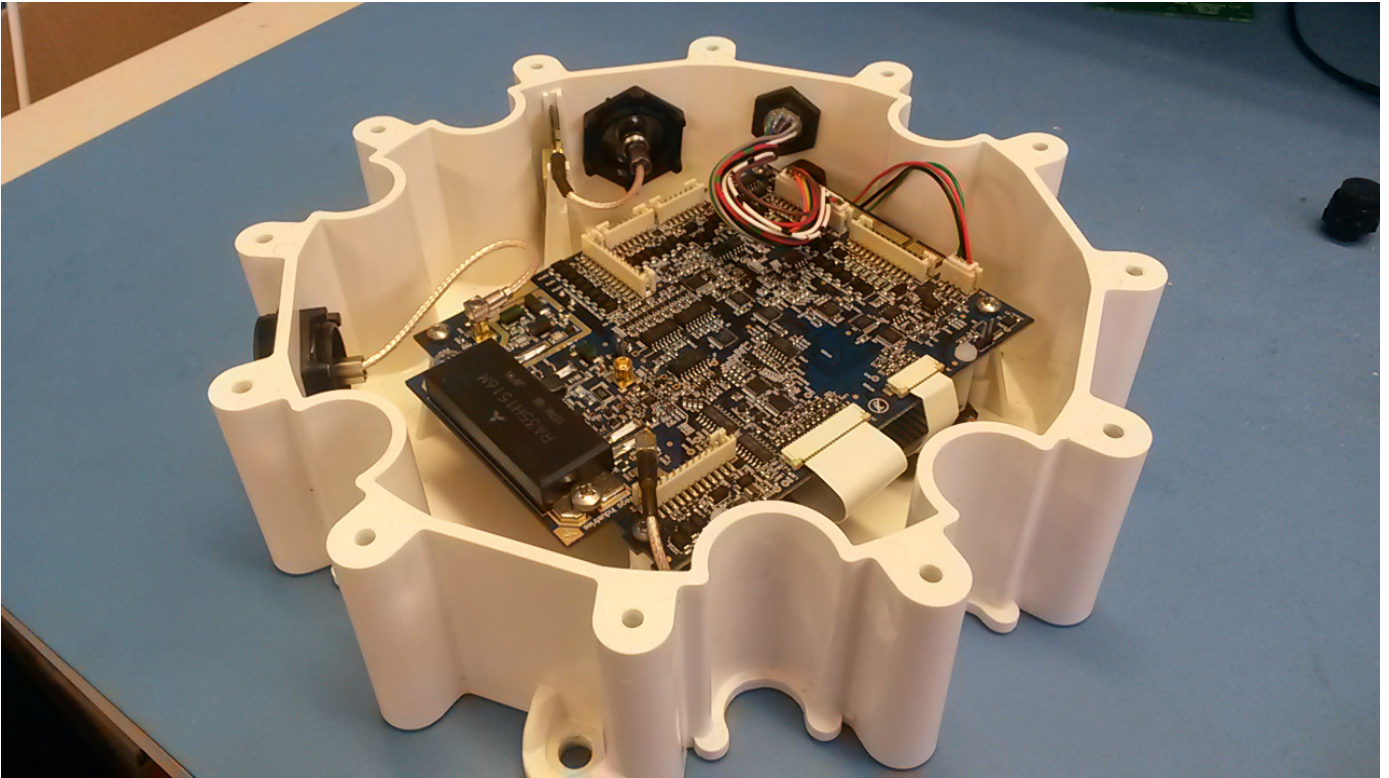
Internal Photos – Assembly stack up



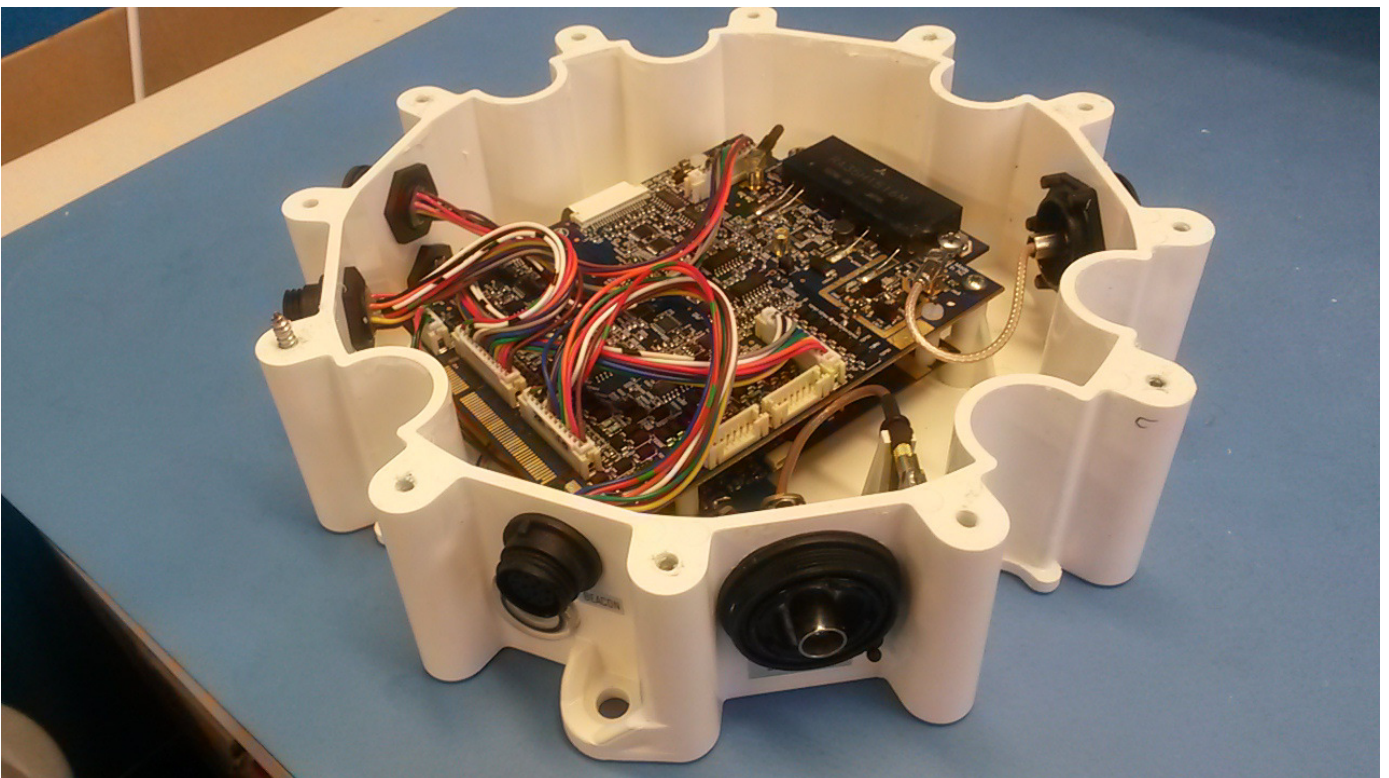
VegaAIS Standard Assembly – view 1



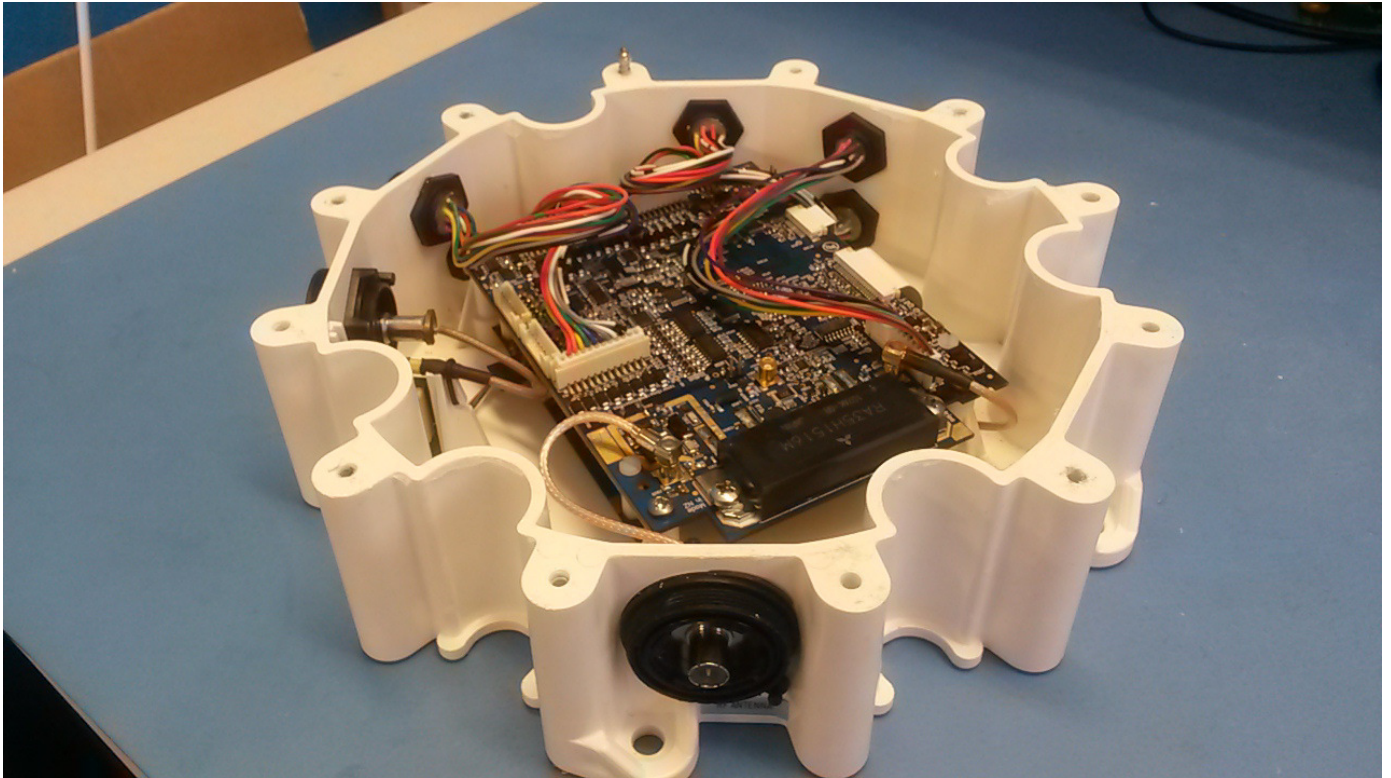
VegaAIS Standard Assembly – view 2



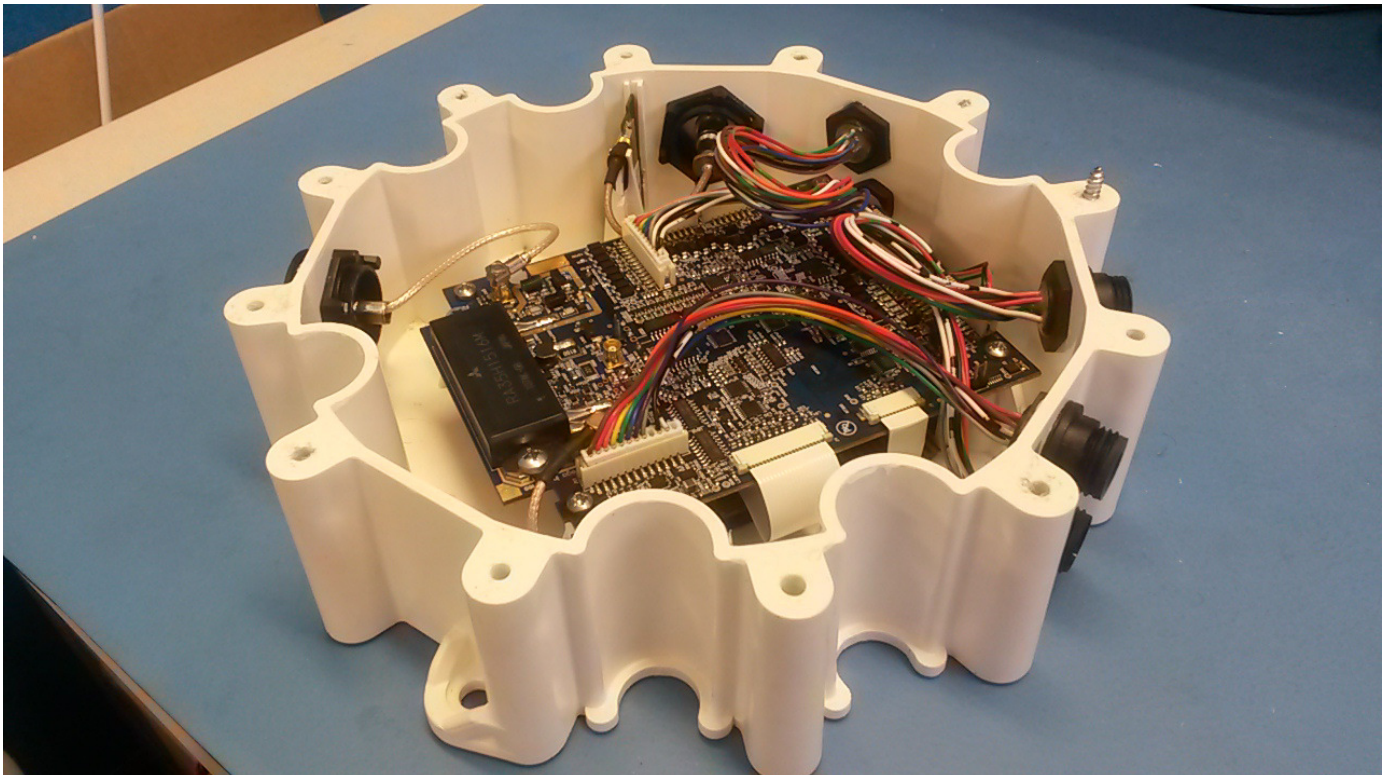
VegaAIS Standard Assembly – view 3



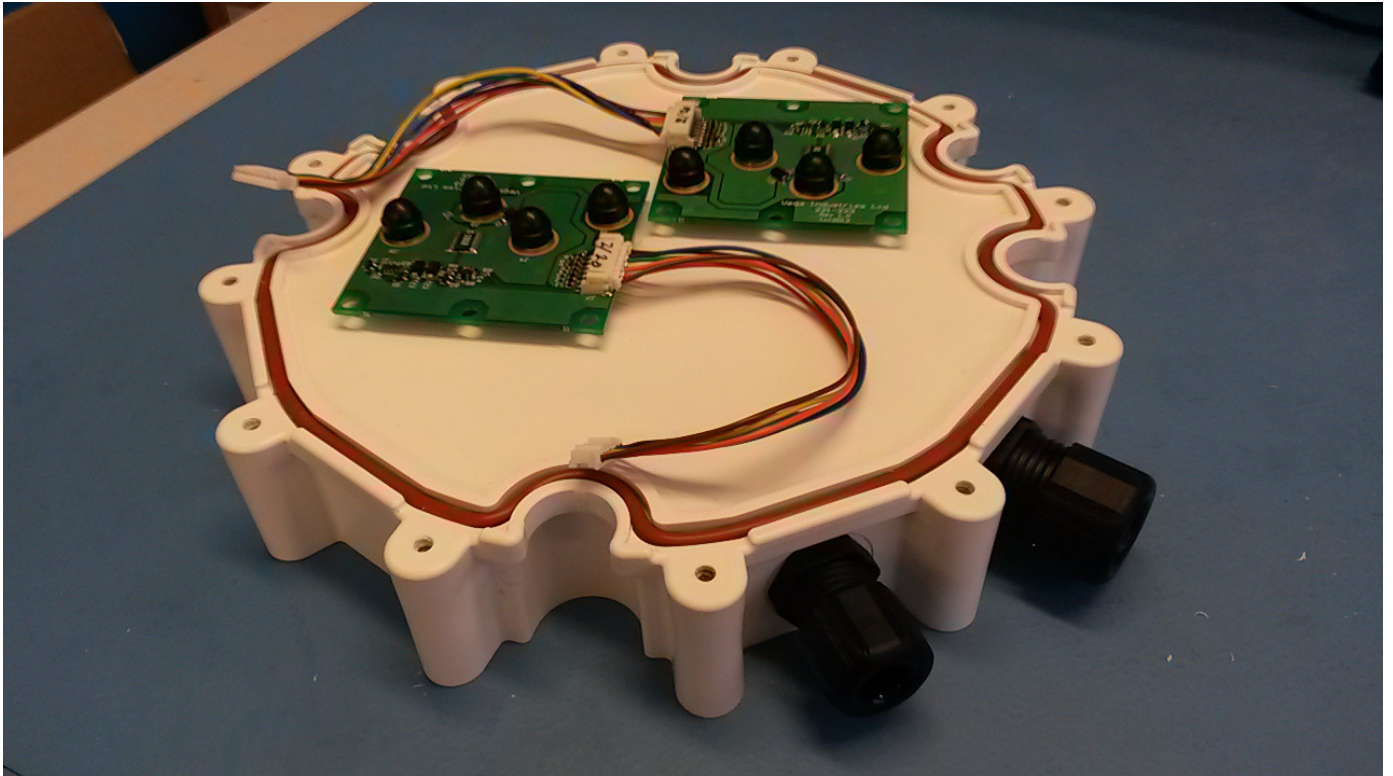
VegaAIS Extended I/O Assembly – view 1



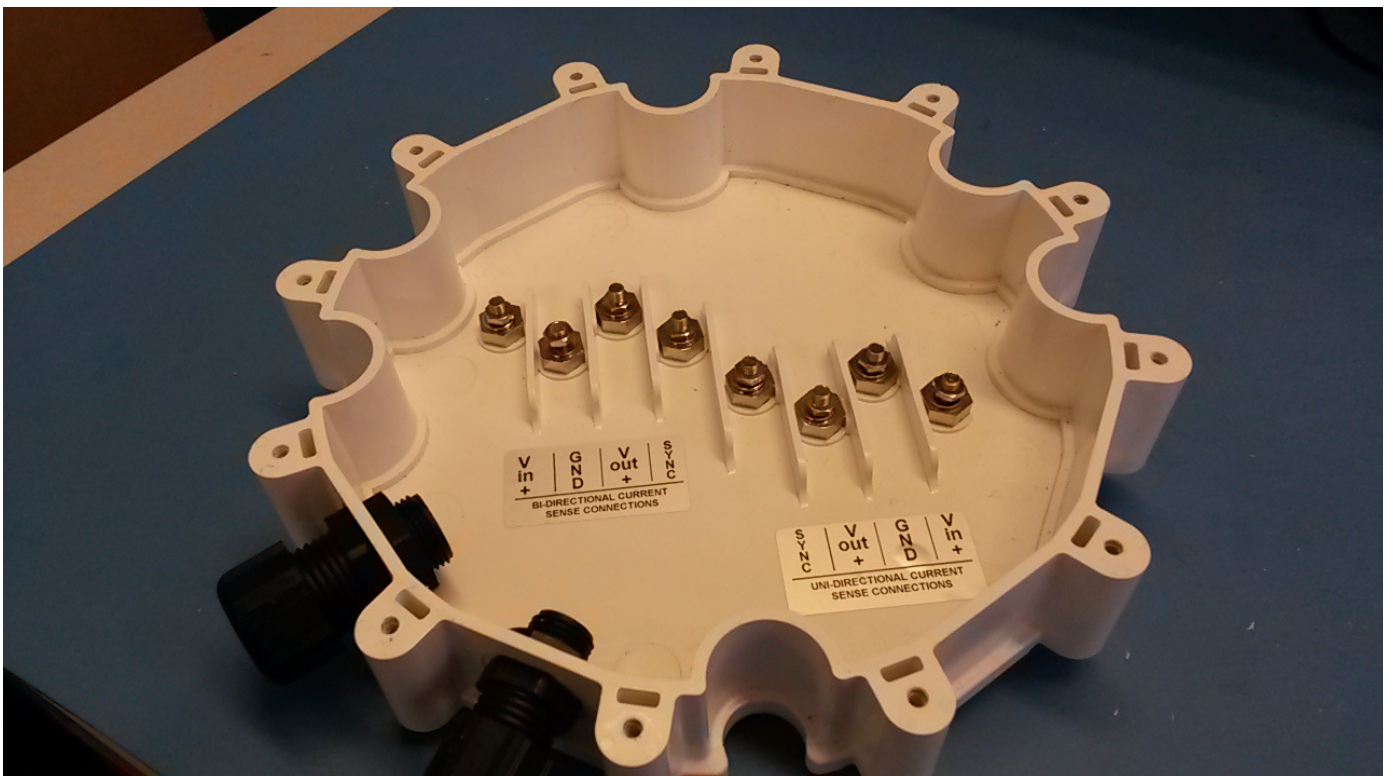
VegaAIS Extended I/O Assembly – view 2



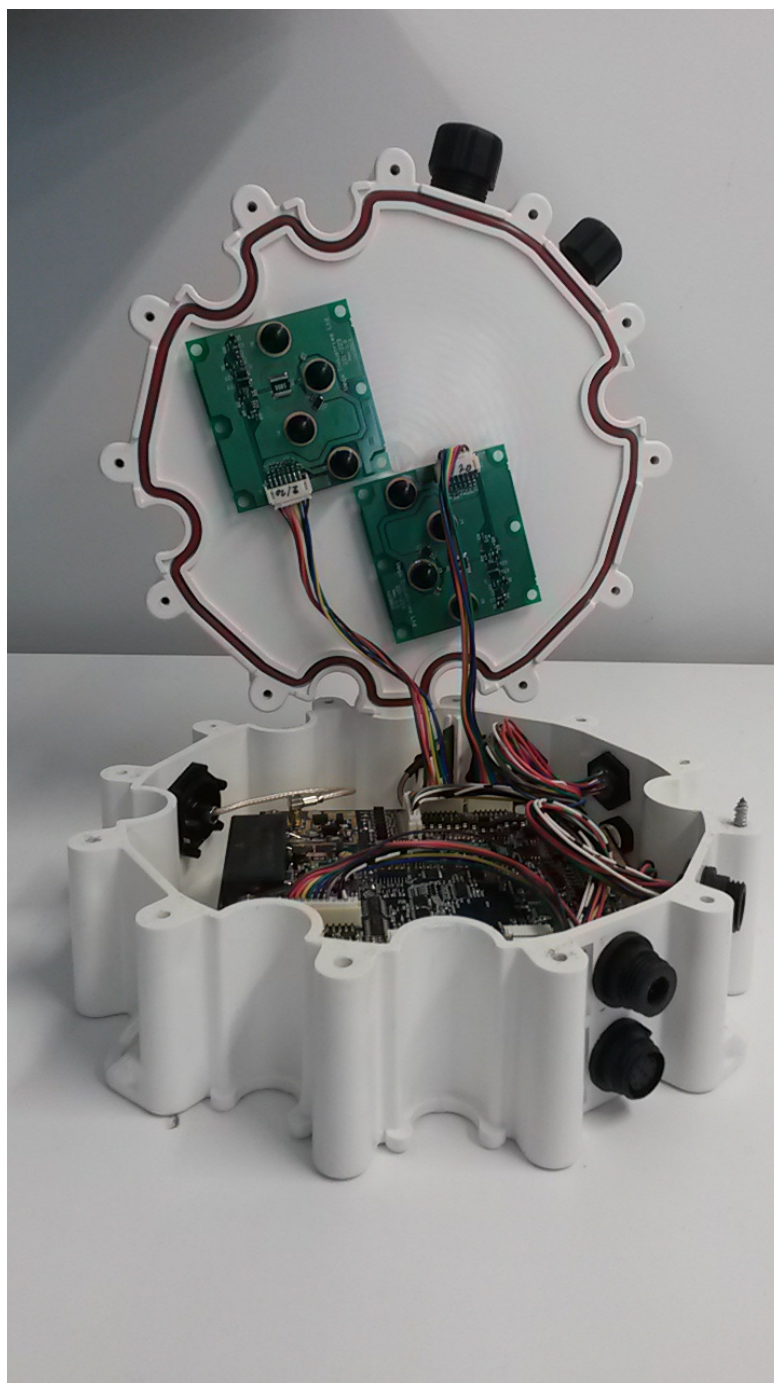
VegaAIS Extended I/O Assembly – view 3



Current Sensor boards fitted to current sensor enclosure



Current Sensor screw terminals in current sensor enclosure



Current sensor internal connections