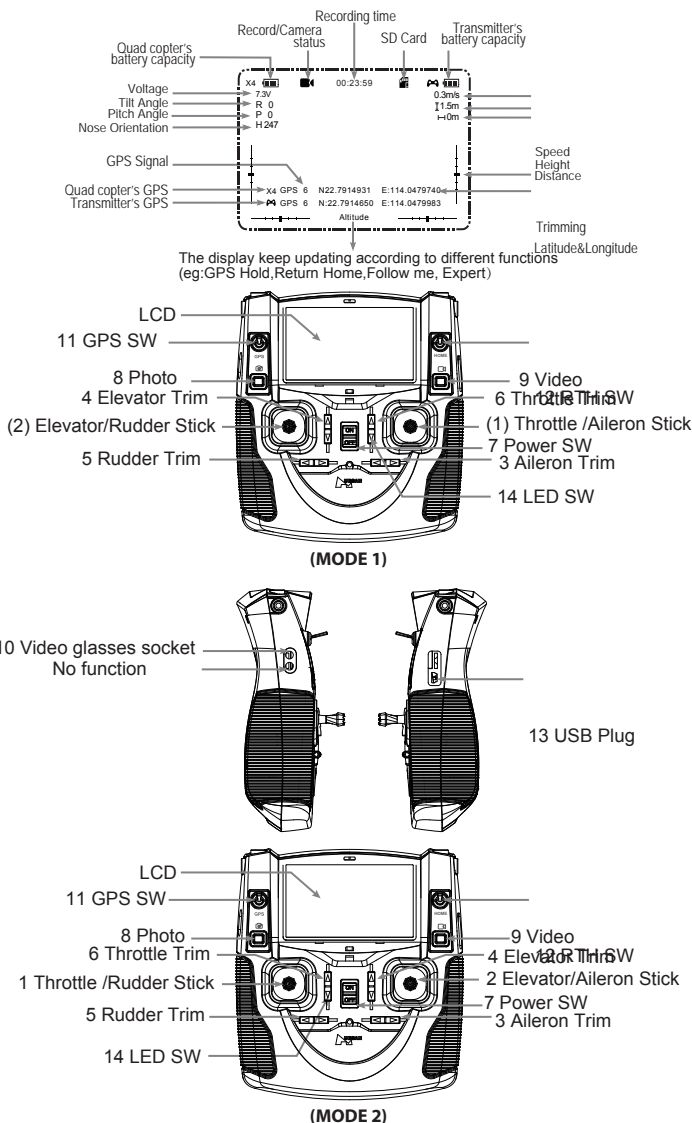

CONDITIONS WHICH ACTIVATE THE FAILSAFE MODE

- (1) Transmitter is powered off.
- (2) The flight distance is beyond the range of the transmitter's signal transmission.
- (3) The transmitter's signal was interrupted by some other strong electronic interference.

 Home Point: It is recorded when armed the motors with no less than 6 GPS satellites.

-
- ⊗ • To ensure that the X4 can return safely to its home point when signal is lost, fly the X4 in safe flight area.
 - ⊗ • If the quantity of GPS satellites drops below six for more than 20 seconds while the X4 is returning home, the X4 will descend automatically.
 - ⊗ • The X4 can not avoid obstacles automatically while in failsafe mode.
 - ⊗ • When the power is low, please land the quadcopter in case of any damages
 - ⊗ • RTH only works when the quadcopter and transmitter have more than 6 GPS satellites.
-

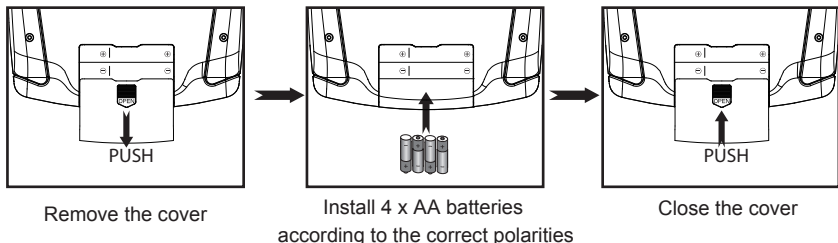
7. TRANSMITTER



7.1 INPUT KEY FUNCTION

S/N	Mode/ Control	Function
(1)	MODE 1 Throttle/Aileron Stick	Push the stick forward or backward and the quadcopter will ascend or descend; Push the stick left or right and the quadcopter will fly left or right.
(2)	MODE 1 Elevator/Rudder Stick	Push the stick forward or backward and the quadcopter will fly forward or backward; Push the stick left or right and the quadcopter will rotate counter clockwise or clockwise.
1	MODE 2 Throttle/ Rudder Stick	Push the stick forward or backward and the quadcopter will ascend or descend; Push the stick left or right and the quadcopter will rotate counter clockwise or clockwise.
2	MODE 2 Elevator /Aileron Stick	Push the stick forward or backward and the quadcopter will fly forward or backward; Push the stick left or right and the quadcopter will fly left or right.
3	Aileron Trim	Aileron trim adjusts for left and right drift.
4	Elevator Trim	Elevator trim adjusts for forward and backward drift.
5	Rudder Trim	Rudder trim adjusts for drift of left and right rotation or yaw.
6	Throttle Trim	Throttle trim is normally left at neutral.
7	Power Switch	Push to turn on the transmitter. Push again to turn off.
8	Photo	Press the photo button to shoot photos.
9	Video	Press video button to start recording and press again to stop.
10	Video glasses socket	Connect Hubsan video glasses (The video glass is not included)
11	GPS SW	Push the switch up, the built-in GPS will calculate the quad copter's position and height and help to keep the quad copter in a stable hover (ONLY FOR OUTDOORS)
12	RTH SW	Push the switch up, the quad copter will return to the home point automatically (ONLY FOR OUTDOORS)
13	USB plug	For upgrading the software
14	LED SW	To turn on/off LED motor indicators

7.2 INSTALL THE TX BATTERY

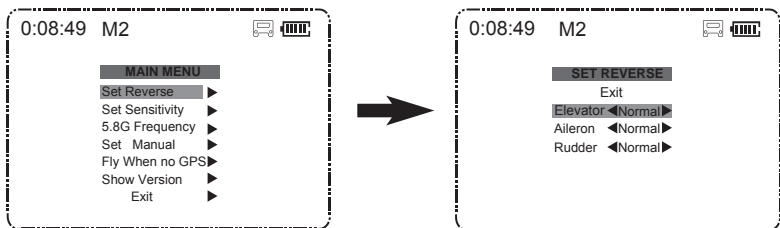


- Do not mix old and new batteries
- Do not mix different types of batteries
- Do not charge non-rechargeable battery.

7.3 REVERSING CHANNEL SETUP

If you would like to reverse any of the stick functions due to personal preference then follow the instructions below. Be aware that it will change the controls back to front.

Pull the throttle stick to the lowest position and long press the Pitch stick simultaneously to enter into MAIN MENU interface. Push the Elevator stick up/down to select “Set Reverse”. Select “Exit” to exit.

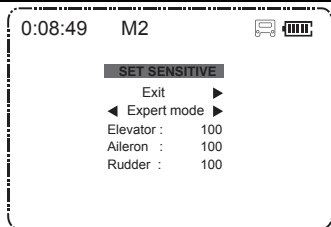
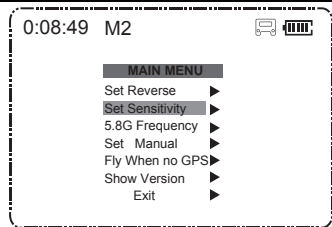


7.4 SENSITIVITY SETUP

If you would like to change the sensitivity of any of the stick functions then follow the instructions below.

Pull the throttle stick to the lowest position and long press the Elevator stick to enter into the MAIN MENU interface. Push the Elevator stick up/down to select “Set Sensitivity”, push the stick right to enter into the “set sensitivity” interface, select “Expert mode” or “Normal mode”.

Select “Exit” to exit.

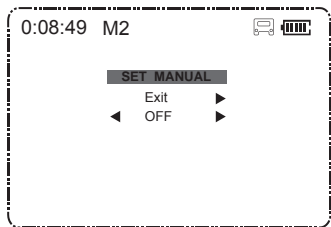
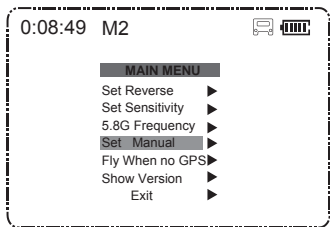


Sensitivity default setting is in Expert Mode.

7.5 MANUAL MODE SETUP

If you would like to make acrobatic flights, such as throwing, please switch off the GPS function and follow the instruction below to enter into the Manual mode

Pull the throttle stick to the lowest position and long press the Elevator stick to enter into the MAIN MENU interface. Push the Elevator stick up/down to select "Set Manual", push the stick right to enter into the "SET MANUAL" interface, select "ON" (without altitude function) or "OFF" (with altitude function). Select "Exit" to exit.



Manual Mode default setting is OFF.

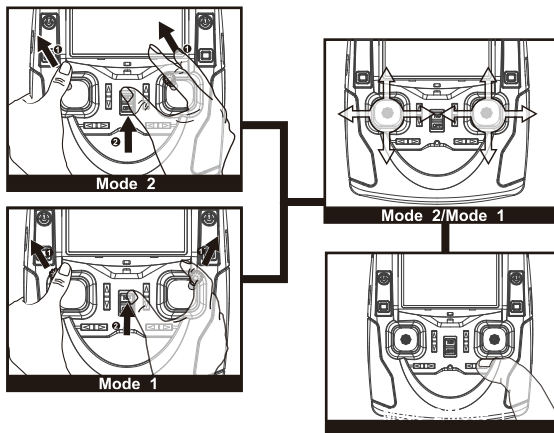
Notice:

1. When the power on the transmitter runs low, the red LED will blink quickly and the LCD screen will turn black, also the transmitter and X4 may disconnect. Please replace with new batteries.
2. If the batteries in the transmitter runs low while flying the X4, you can still control the X4, please land the X4 and then replace batteries.
3. The Transmitter can only use 2S Lipo batteries, 4XAA batteries or NI-MH AA batteries, other batteries will damage the Transmitter.

8. TRANSMITTER CALIBRATION

Mode 2: Push both sticks to the upper left corner and power on the transmitter simultaneously until “Calibrate Stick Mode 2” displays on LCD, rotate both sticks in circles for three times, then release both sticks, press any trim for 1.5 seconds until the LED on the transmitter turns into solid green which indicates a successful calibration.

Mode 1: Push the left stick to the upper left corner and the right stick to the upper right corner and power on the transmitter simultaneously until “Calibrate Stick Mode 1” displays on LCD, rotate both sticks in circles for three times, then release both sticks, press any trim for 1.5 seconds until the LED on the transmitter turns into solid green which indicates a successful calibration.

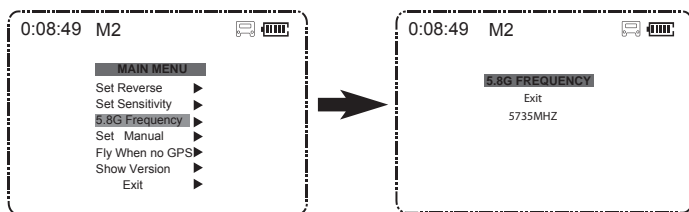


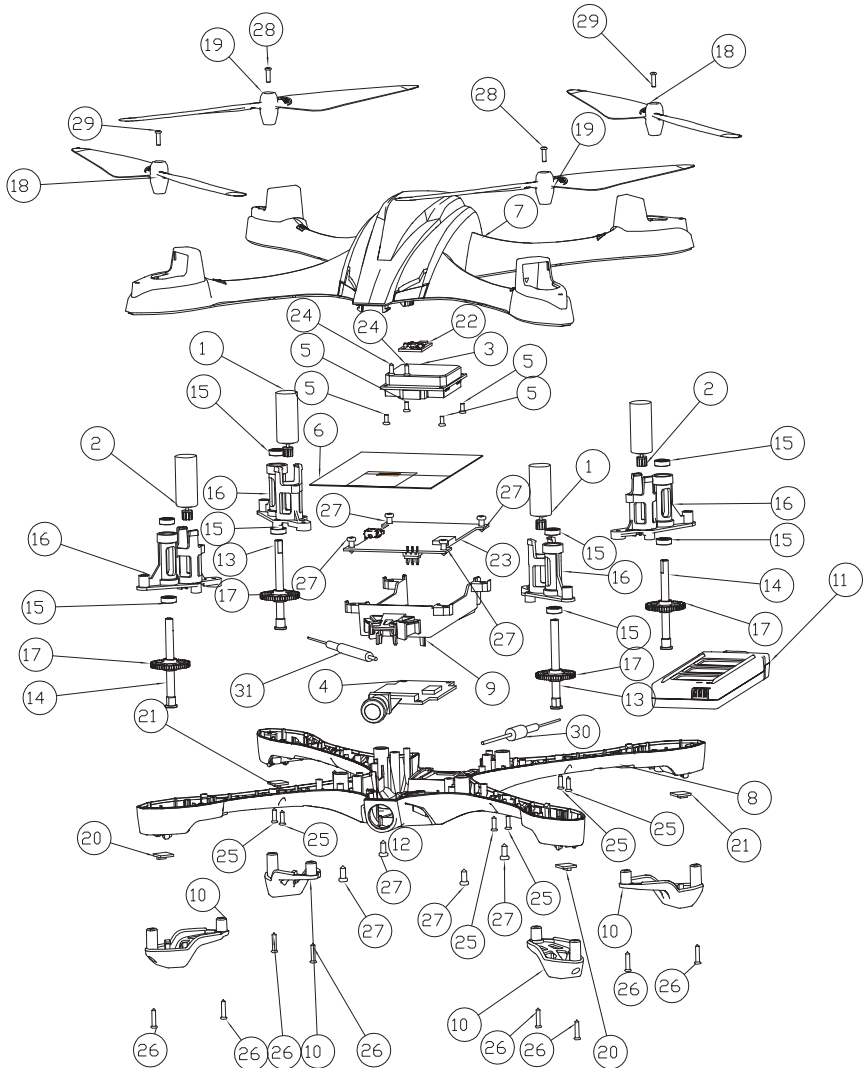
 The transmitter mode can be shifted according to the above operation.

9. FREQUENCY SELECTABLE 5.8GHZ

The transmitter will automatically find the best frequency to ensure a live video with good quality of transmission. Please re-select the frequency from 5735MHZ to 5841MHZ to get a better video transmission when necessary.

Pull the throttle stick to the lowest position and press the Elevator stick for 1.5 second to enter into the MAIN MENU interface. Push the Elevator stick up/down to select “5.8G Frequency”, push the stick to the right to enter into the “5.8G frequency” interface, select a matched frequency.





NO.	PART NAME	QTY
01	Motor B	2
02	Motor A	2
03	GPS Module	1
04	5.8 GHz Transmission Module	1
05	Screw (PB1.4*3)	4
06	Signal Isolation Membrane	1
07	Upper Body Shell	1
08	Lower Body Shell	1
09	Battery Compartment	1
10	Lampshade	4
11	Li-Po Battery	1
12	Camera Module	1
13	Motor Shaft B	2
14	Motor Shaft A	2
15	Shaft Sleeve	8
16	Motor Holder	4
17	Rotary Gear	4

NO.	PART NAME	QTY
18	Propeller A	2
19	Propeller B	2
20	Blue LED	2
21	Red LED	2
22	Compass Module	1
23	Main Control Board	1
24	Screw (PA1.4*4)	2
25	Screw (PA1.4*5)	8
26	Screw (PA1.4*6)	8
27	Screw (PA2.0*5)	8
28	Screw (PM1.4*5)	2
29	Screw (PM1.4*5)	2
30	5.8G Antenna	1
31	2.4G Antenna	1

H507D TROUBLESHOOTING

1. Cannot bind!

- ① Check if the quadcopter and transmitter are powered on or not.
- ② Rebind the quadcopter and transmitter, please refer to the procedures instructed by point 5.3 in the manual.

2. Cannot arm the motors!

- ① Check if the compass calibration is completed or not.
- ② Make sure the Home switch on transmitter is off.
- ③ Calibrate the transmitter.

3. No GPS Signal!

Make sure it's for outdoors flight, and the flight environment should be open without tall buildings.

4. Altitude Hold do not work!

- ① Check if the barometer parameters on transmitter are OK or not;
- ② Calibrate the transmitter.

5. Positioning do not work!

- ① Check if the quadcopter is with more than 6 GPS satellites or not.
- ② Calibrate the transmitter.

6. Cannot take pictures or videos!

- ① Check if the Micro-SD card is inserted or not.
- ② **Check if the Micro-SD card is formatted correctly or not (Format the Micro-SD card before use, if the Micro-SD card is with FAT32, the card should be Class 4 or Class 4+)**

7. Cannot fly back to Home Point!

Be sure the GPS satellites are more than 6 before flying.

8. GPS signal lost!

Check if there is any interference to quad or not, for example: high-tension cables, radio tower.

9. The quad or video shakes while flying

- ① **Check the propellers, replace propellers if there is any broken or deformed;**
- ② **Check the screws on quadcopter are fixed in place or not;**
- ③ **Check the motor shaft is broken or not.**

FCC INFORMATION

This equipment has been tested and found to comply with the limits for a Class B digital device, pursuant to Part 15 of the FCC Rules. These limits are designed to provide reasonable protection against harmful interference in a residential installation. This equipment generates, uses, and can radiate radio frequency energy and, if not installed and used in accordance with the instructions, may cause harmful interference to radio communications. However, there is no guarantee that interference will not occur in a particular installation. If this equipment does cause harmful interference to radio or television reception, which can be determined by turning the equipment off and on, the user is encouraged to try to correct the interference by one or more of the following measures:

- Reorient or relocate the receiving antenna.
- Increase the separation between the equipment and receiver.
- Connect the equipment into an outlet on a circuit different from that to which the receiver is connected.
- Consult the local dealer or an experienced radio/TV technician for help.

Changes or modifications not expressly approved by the party responsible for compliance could void the user's authority to operate the equipment.

This device complies with Part 15 of the FCC Rules. Operation is subject to the following two conditions: (1) this device may not cause harmful interference, and (2) this device must accept any interference received, including interference that may cause undesired operation.

CAUTION
RISK OF EXPLOSION IF BATTERY IS REPLACED
BY AN INCORRECT TYPE,
DISPOSE OF USED BATTERIES ACCORDING
TO THE INSTRUCTIONS

Environmentally friendly disposal

Old electrical appliances must not be disposed of together with the residual waste, but have to be disposed of separately. The disposal at the communal collecting point via private persons is for free.

The owner of old appliances is responsible to bring the appliances to these collecting points or to similar collection points. With this little personal effort, you contribute to recycle valuable raw materials and the treatment of toxic substances.



User manual is subject to change without prior notice due to unforeseen product upgrades.

WWW.HUBSAN.COM

VERSION 1.0 EN

