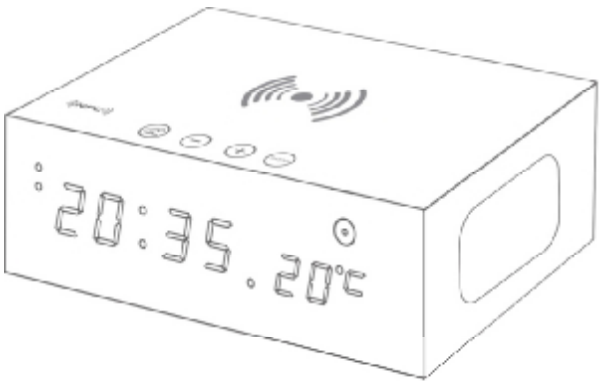


NEOPine

User Manual



X5
Wooden Bluetooth Alarm Clock Speaker
Wireless Charging Station

Table of contents

1. Features	1
2. Included in this Package	2
3. Technology Specification	2
4. Diagram of the LED Display&the Button	3
5. Operating Instruction of the Button and DC & Aux-in Jack ..	5
5.1 Time Settings	5
5.2 Alarm Settings	6
5.3 Bluetooth Function	7
5.4 Handsfree Function	8
5.5 Aux in Jack.....	8
5.6 Temperature Display Setting	8
5.7 Wireless Charging	8
6. Playing and Connection diagram	9
7. Disposal of your old product	9

Dear customer, thanks for your purchasing W2. Please read all safety instruction before proceeding for your safety and proper using.

1. Features

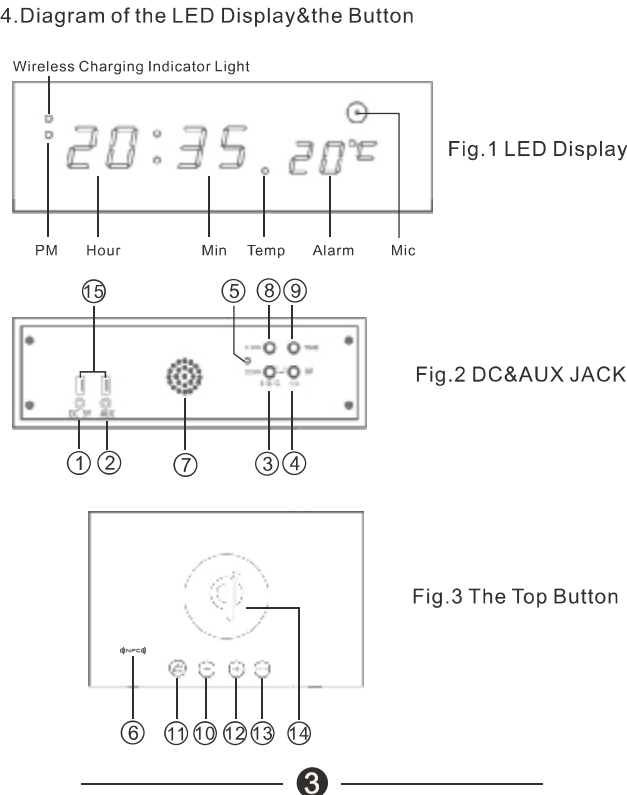
- Pure wood, texture surfaces, stylish appearance.
- Integrate clock, alarm, speaker and thermometer function in one.
- LED digital display.
- High sense touch key.
- 3.5mm stereo line-in cable (included) for playing other audio devices.
- Easily paired with Bluetooth-enabled devices, easy to enjoy music.
- Simple appearance, easy setting.
- Built-in microphone, have a clear call through Bluetooth hands-free function.
- Built-in high-quality speakers, bright treble, deep bass. Music performance beyond your imagination.

2. Included in this package
(please check the accessories included in this package after purchasing)

X5 main unit	1 pc
3.5mm jack audio cable	1 pc
Power Adaptor	1 pc
User manual	

3. Technology Specification

Bluetooth Version: 4.0
Bluetooth Profiles: A2DP , AVRCP , HFP , HSP
Bluetooth Range: 10 M
Output Power: RMS 5W+5W
Speaker : 4Q 5W 1.75inch
Frequency Response : 150Hz-20KHz
S/N Ratio : 80-96dB
Distortion : <5%
Cable : 3.5mm jack audio cable
Power Adaptor: AC100 - 240V 50/60Hz DC 5V 4A
Product Net Weight : 0.592kg
Product Dimension : 175X115X70mm



- 1 DC 5V power jack
- 2 AUX support other audio sources
- 3 DOWN adjust time /turn on alarm/turn off alarm/ stop alarm
- 4 UP adjust time /switch hour mode/ stop alarm
- 5 temperature
- 6 NFC Connect with Bluetooth via NFC
- 7 Speaker Alarm/Buttons sound
- 8 ALARM set alarm/stop alarm
- 9 TIMEset time/stop alarm
- 10 volume down
- 11 pause/play/answer call/hang up/turn off bluetooth
- 12 volume up
- 13 Snooze buffonPress "SNOOZE" to adjust the LED brightness.
- 14 wireless charging
- 15 USB Two USB ports

5. Operating Instruction of the Button and DC & Aux-in Jack

Connect the adaptor with the unit to turn on the unit. The time displaying on the LED screen is random time during the first use of the unit. The figure on the right side is the room temperature. There are 2 degree difference between the displaying temperature and the actual temperature.

5.1. Time Settings

Press "UP" to switch 12 and 24 hours mode. In 12-hour mode, a single hour figure begins to flash; In 24-hour mode, both of the two hour figures begin to flash.

After confirm the hour mode, press "TIME", the HOUR figure begins to flash. Press "UP"/ "DOWN" to adjust the HOUR; Press "TIME" again, the MINUTE figure beings to flash. Press "UP"/ "DOWN" to adjust the MINUTE. To exit time setting, press "TIME" to confirm your setting. (No operation on any keys in 15 seconds, it exits time setting automatically)

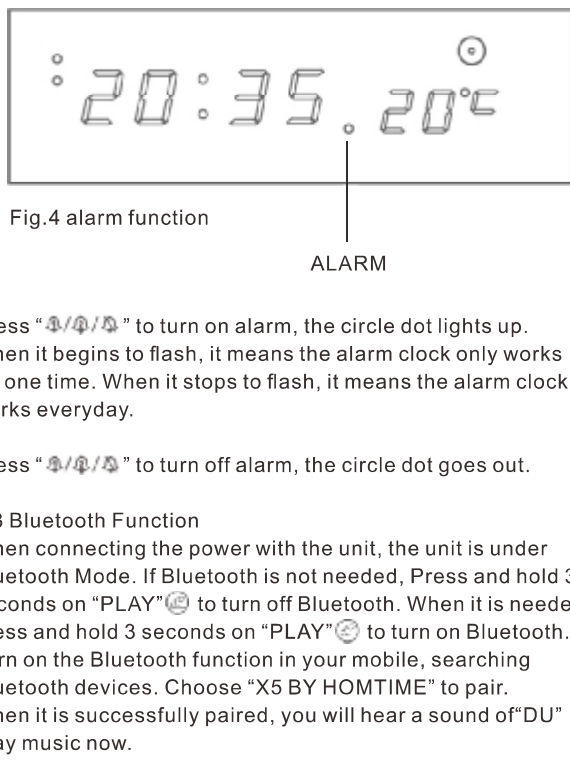
5.2. Alarm Settings

Press " " to turn on alarm. The alarm indicator light begins to flash on the LED screen in every 2 seconds. The alarm clock only works for one time. Press " " again, the alarm indicator light stops flashing. The alarm clock works everyday (See Fig 4)

Press " " to turn on alarm. The alarm indicator light begins to display on the LED screen. (See Fig.4)

Press "ALARM" to set alarm time, the HOUR figure begins to flash. Press "UP"/ "DOWN" to adjust the HOUR; Press "ALARM" again, the MINUTE figure beings to flash. Press "UP"/ "DOWN" to adjust the MINUTE. To exit alarm setting, press "ALARM" to confirm your setting. (No operation on any keys in 15 seconds, it exits alarm setting automatically)

When alarm is on, it can last for one hour. Press any key on "TIME"/ "ALARM"/ "UP"/ "DOWN" to stop the alarm. After stop the alarm, it will be on again after 24 hours. To turn off alarm, press " ", the alarm indicator light goes out.



When playing music, Press "PLAY" to pause the music, Press it again to play music (See Fig.5) Hold and press "+" and "-" to vlume up and down

5.4 Handsfree Function

When playing music via Bluetooth, the phone call is coming in, press "PLAY" to answer the call. Press "PLAY" to hung off the call, the music playing continues.

5.5 AUX-in Jack

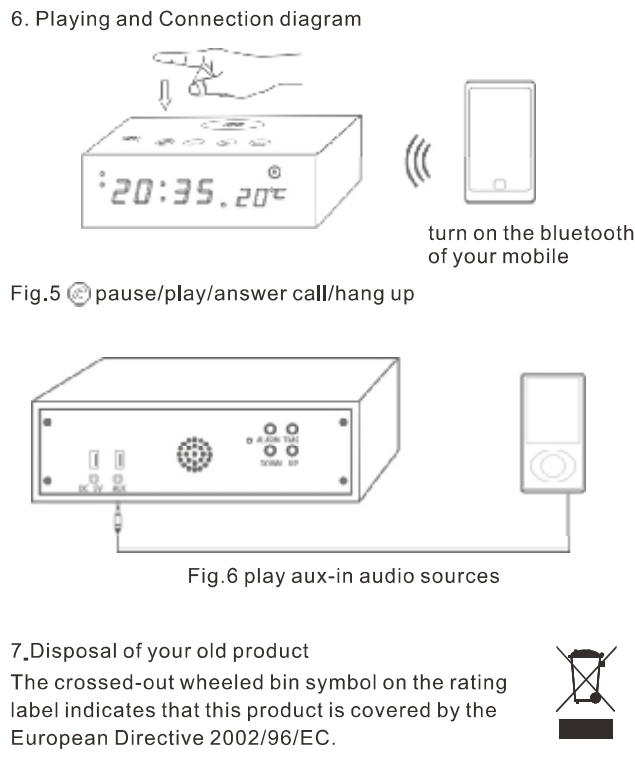
When the unit is on, connect the device to "AUX- in" jack on the back of the unit with an 3.5mm stereo audio cable. The unit will switch to AUX mode automatically and play AUX-in audio sources only. (See Fig.6)

5.6 Temperature Display Setting

Fahrenheit/Celsius for option long press "UP" + "DOWN" for 5 seconds to display F/C, press "UP" for C, "DOWN" for F, then press "TIME" or "ALARM" to confirm.

5.7 Wireless Charging

Place any mobile device that is built-in "Qi" on the unit, the unit can charge for mobile. The charging indicator light will b on during the charging.



X5

Wireless charging Bluetooth speaker

NEOPine

ShenZhen QXTC Electronics Co.,Ltd.
Address: 2302 Block A, Modern Window, Huaqiang North Road, Futian District, Shenzhen
Zip Code: 518000
TEL: 0755-83277857
FAX: 0755-83587262
E-mail: ricky35635692@gmail.com

FCC Caution: Any changes or modifications not expressly approved by the party responsible for compliance could void the user's authority to operate this equipment.

This device complies with Part 15 of the FCC Rules. Operation is subject to the following two conditions: (1) This device may not cause harmful interference, and (2) this device must accept any interference received, including interference that may cause undesired operation.

NOTE: This equipment has been tested and found to comply with the limits for a Class B digital device, pursuant to Part 15 of the FCC Rules.

These limits are designed to provide reasonable protection against harmful interference in a residential installation. This equipment generates, uses and can radiate radio frequency energy and, if not installed and used in accordance with the instructions, may cause harmful interference to radio communications.

However, there is no guarantee that interference will not occur in a particular installation.

If this equipment does cause harmful interference to radio or television reception, which can be determined by turning the equipment off and on, the user is encouraged to try to correct the interference by one or more of the following measures:

FCC RF Radiation Exposure Statement:

This equipment complies with FCC radiation exposure limits set forth for an uncontrolled environment. End users must follow the specific operating instructions for satisfying RF exposure compliance. This transmitter must not be collocated or operating in conjunction with any other antenna or transmitter.

The device has been evaluated to meet general RF exposure requirement. The device can be used in portable exposure condition without restriction.