

# Wireless Network Camera

## NVR&HVR

### Easy guide

Thanks for choosing our products, please read this manual carefully before use!

## 1. NVR connect to IPCAM

### 1) Search IPCAM



Click CAMERA icon, popup CHANNEL CONFIG sub menu.

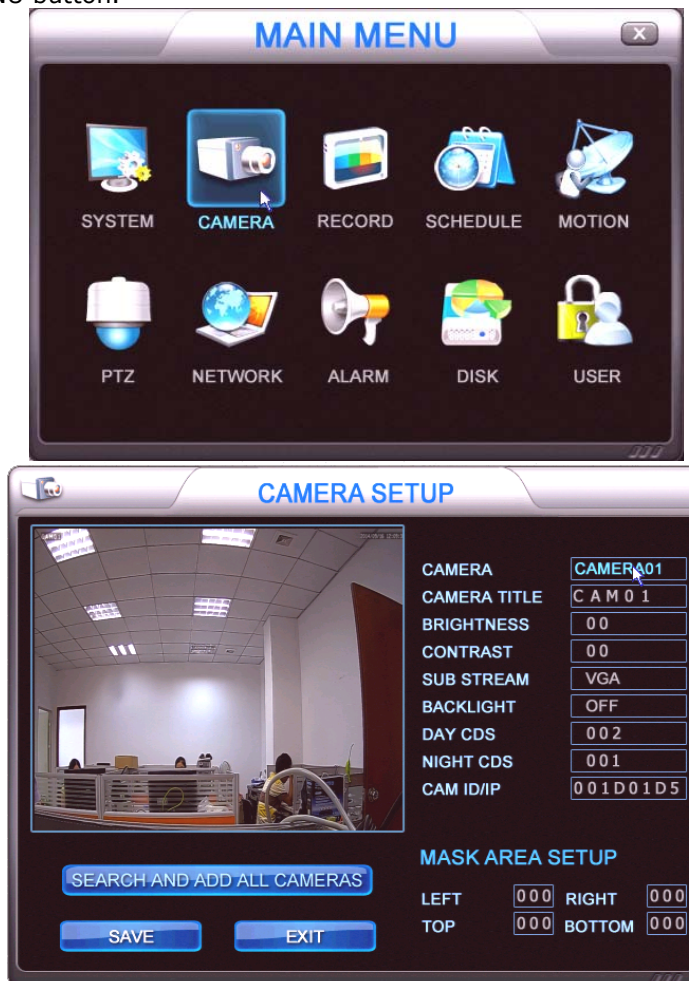


Click SEARCH button, after 20 seconds, all IPCAM ID number or IP address in local network will be displayed in menu, and auto assign to different channel, click SAVE, exit menu, All IPCAM image will display.

## 2) Manual add in IPCAM



Click MENU button.



Select different channel, use mouse wheel to change CAM IP/ID, you can input IP address or ID number.

- V0000110—Onvif IPCAM, IP address is 110

- 00000111---FAB IPCAM, IP address is 111
- 001CD23A--- FAB IDCAM, ID number is 001CD23A
- 00000BNC---Analog camera input

Please note the following instructions

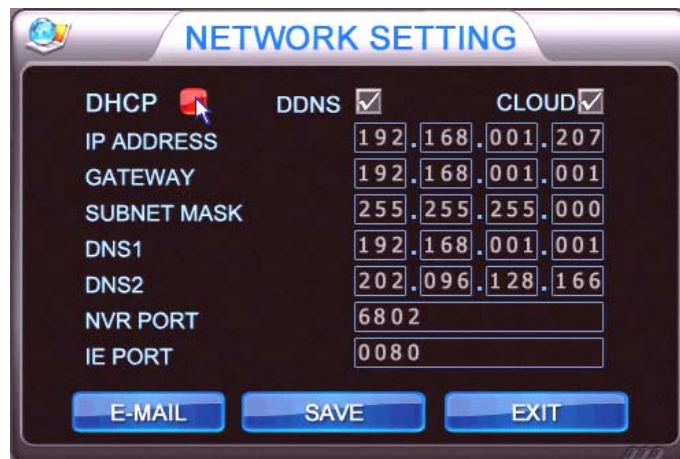
- BACKLIGHT---If set ON, camera shine on outdoor, it will be overexposure; camera shine on indoor, it can enhance the brightness of the backlight;
- DAY CDS---More low more easy to start day mode, on day mode, image is color and ir turn off;
- Note---For analog video input, DAY CDS need set to 230-255, then image can be move to the middle.
- NIGHT CDS---More high more easy to start night mode, on night mode, image is black white and ir turn on;
- SUB STREAM---This function only for FAB protocol IPCAM, if set CIF, split image resolution only 320\*240, but image very fluid. Internet also become fluid.

## 2. NVR connect to cloud

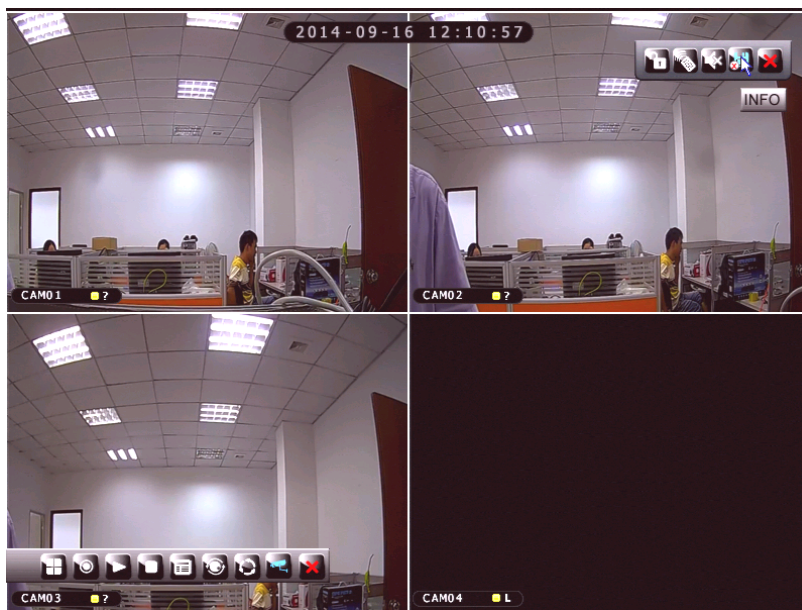
Nvr connect to cloud, then mobile APP and client software can connect to NVR over internet.



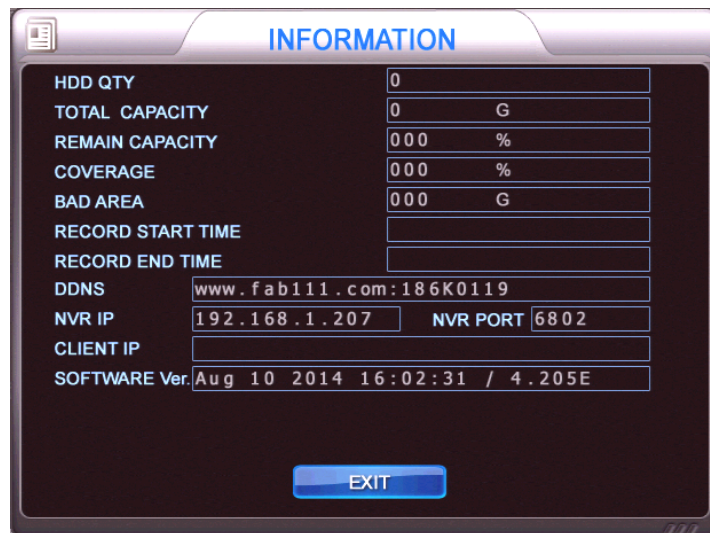
Click NETWORK icon.



Enable DDNS and CLOUD, Click DHCP button, NVR will get IP address from router, click SAVE.



Click INFO icon, popup INFORMATION submenu.



Field	Value
HDD QTY	0
TOTAL CAPACITY	0 G
REMAIN CAPACITY	000 %
COVERAGE	000 %
BAD AREA	000 G
RECORD START TIME	
RECORD END TIME	
DDNS	www.fab111.com:186K0119
NVR IP	192.168.1.207
NVR PORT	6802
CLIENT IP	
SOFTWARE Ver.	Aug 10 2014 16:02:31 / 4.205E

EXIT

In DDNS line, domain name and machine number display, if you see @ symbol, mean NVR already connect to cloud server.

### 3. Mobile APP connect to NVR

If you are using this software for the first time, please download the software of "HVR cloud", setup the software, then open.



Device name: Abc

IP/Server: www.fab111.com

Port/ID: 186K0699

User name: USER01

Password: \*\*\*\*\*

Device Login Cloud

Device manage

Click Device manage button in login interface,



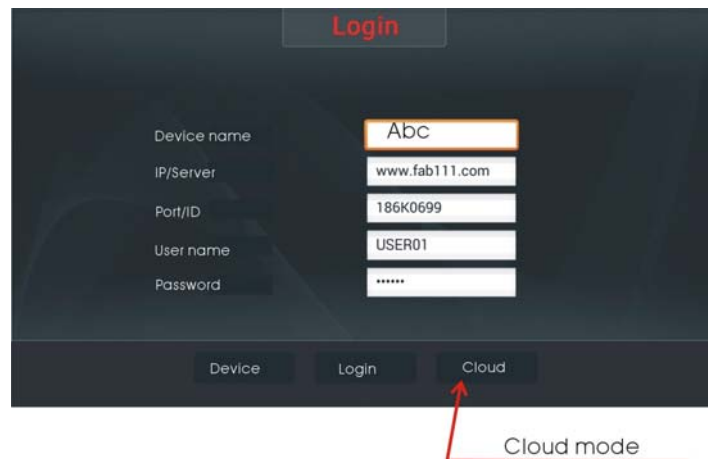


Click search

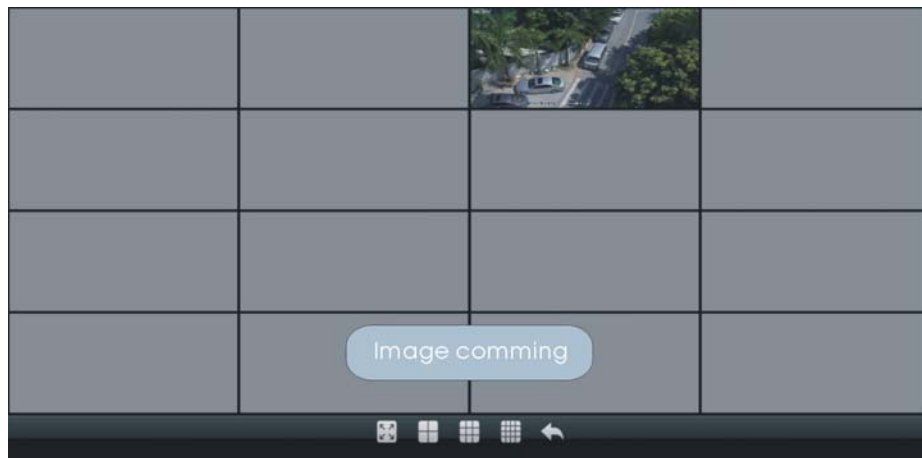


Search NVR

Click SEARCH button, search all NVR in local network.



Select NVR number what you want to view, return login interface, select CLOUD, click LOGIN, APP will connect NVR.

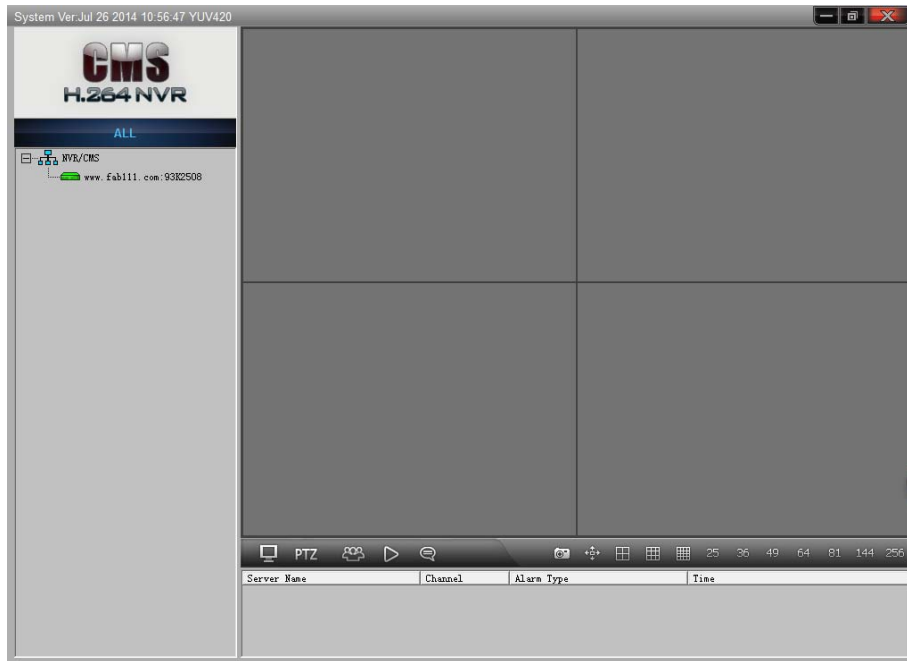


#### 4. CMS connect to NVR

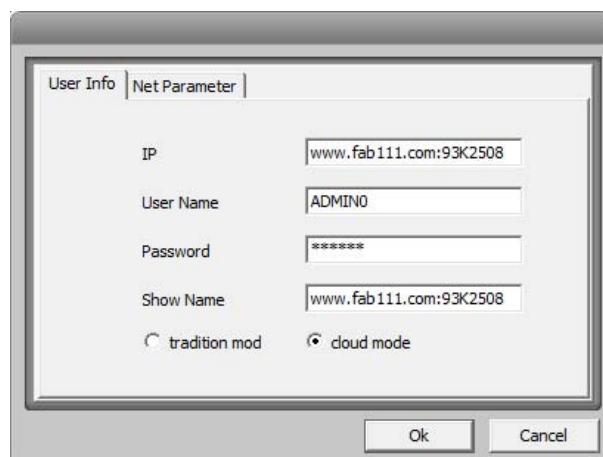
Copy CMS software to PC from disk, this CMS software is green software, no need setup, double click start.exe in folder to run the software. Note: windows firewall may be popup tips, ask whether to allow network access, you must select "allow", if you're not careful to select "forbid", please copy the folder to other disk, run software again.

1) Auto search





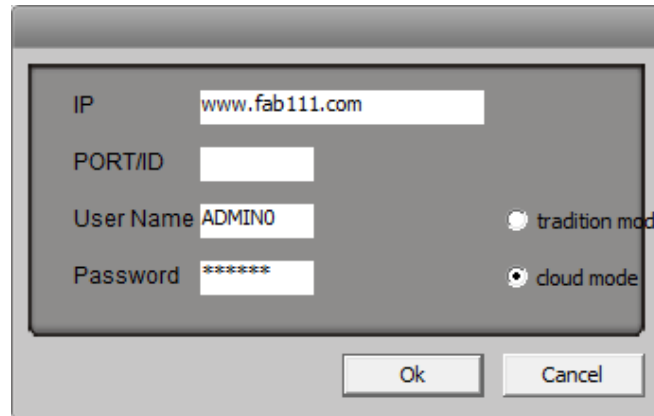
After run the software, device list window will display all NVR in local network, right click NVR/CMS, click "turn off NVR auto search", will stop auto search NVR function; Select NVR device, right click, click "Connect", if NVR and PC is same network segment, CMS will display NVR image.



Select NVR, right click, click "property", enable "cloud mode", show name can be modified into easy remember name.

2) Manual add in

Right click NVR/CMS , select " new IP " , input login machine information, enable cloud mode, click OK to exit menu, right click new device, select "connect"



IP: www.fab111.com

PORT/ID:

User Name: ADMIN0

Password: \*\*\*\*\*

☐ tradition mod

☒ cloud mode

Ok Cancel

3) After input machine information in CMS, you can zip the folder, send email to yourself or your customer. Then download to use on other place.

### 3. FCC Statement

This equipment has been tested and found to comply with the limits for a Class B digital device, pursuant to Part 15 of the FCC Rules. These limits are designed to provide reasonable protection against harmful interference in a residential installation. This equipment generates uses and can radiate radio frequency energy and, if not installed and used in accordance with the instructions, may cause harmful interference to radio communications. However, there is no guarantee that interference will not occur in a particular installation. If this equipment does cause harmful interference to radio or television reception, which can be determined by turning the equipment off and on, the user is encouraged to try to correct the interference by one or more of the following measures:

- Reorient or relocate the receiving antenna.
- Increase the separation between the equipment and receiver.
- Connect the equipment into an outlet on a circuit different from that to which the receiver is connected.
- Consult the dealer or an experienced radio/TV technician for help.

This device complies with part 15 of the FCC Rules. Operation is subject to the following two conditions:(1) This device may not cause harmful interference, and (2) this device must accept any interference received, including interference that may cause undesired operation.

Changes or modifications not expressly approved by the party responsible for compliance could void the user's authority to operate the equipment.

This equipment complies with FCC radiation exposure limits set forth for an uncontrolled environment. This equipment should be installed and operated with minimum distance 20cm between the radiator & your body.