

## FCC WARNINGS

- Warning: Changes or modifications to this unit not expressly approved by the party responsible for compliance could void the user's authority to operate the equipment.

NOTE: This equipment has been tested and found to comply with the limits for a Class B digital device, pursuant to Part 15 of the FCC Rules. These limits are designed to provide reasonable protection against harmful interference in a residential installation. This equipment generates, uses, and can radiate radio frequency energy and, if not installed and used in accordance with the instructions, may cause harmful interference to radio communications. However, there is no guarantee that interference will not occur in a particular installation. If this equipment does cause harmful interference to radio or television reception, which can be determined by turning the equipment off and on, the user is encouraged to try to correct the interference by one or more of the following measures:

- Reorient or relocate the receiving antenna.
- Increase the separation between the equipment and receiver.
- Connect the equipment into an outlet on a circuit different from that to which the receiver is connected.
- Consult the dealer or an experienced radio/TV technician for help.

This device complies with part 15 of the FCC rules. Operation is subject to the following two conditions:  
(1) this device may not cause harmful interference, and  
(2) this device must accept any interference received, including interference that may cause undesired operation.

## ADDITIONAL WARNINGS

- WARNING: To prevent fire or shock hazards, do not expose this unit to rain or moisture.
- WARNING : Where the mains plug or appliance coupler is used as the disconnect device, such disconnect device shall remain readily operable.
- Lithium batteries, like all rechargeable batteries, are recyclable and should be recycled or disposed of according to state and local guidelines. They should never be disposed of in normal household waste, and they should never be incinerated, as they might explode. Contact your local government for disposal or recycling practices in your area.
- WARNING: This product may contain chemicals known to the State of California to cause birth defects, or other reproductive harm (California Prop 65). Wash hands after handling.
- This product meets and complies with all Federal regulations.
- **To avoid hearing damage**, make sure that the volume on your music player is turned down before connecting your headphones. After placing headphones in/on your ears, gradually turn up the volume until you reach a comfortable listening level.

## International Support

To download this User's Guide in English, Spanish, or French, or to get answers to frequently asked questions, visit the support section at:  
**www.iLiveElectronics.com**

Para descargar este Manual del Usuario en Inglés, Español y Francés, o para obtener respuestas a preguntas frecuentes, visite la sección de apoyo en:  
**www.iLiveElectronics.com**

Pour télécharger ce guide de l'utilisateur en Anglais, Espagnol ou Français, ou pour obtenir des réponses à des questions fréquemment posées, consultez la rubrique d'assistance sur:  
**www.iLiveElectronics.com**

## Contact Information

**Website:** [www.iLiveElectronics.com](http://www.iLiveElectronics.com)  
**Email Support:** [prodinfo@dpiinc.com](mailto:prodinfo@dpiinc.com)  
**Email Parts:** [partsinfo@dpiinc.com](mailto:partsinfo@dpiinc.com)  
**Phone Support:** 1-888-999-4215

## Warranty

For Warranty Information and the most up-to-date version of this User's Guide, go to:  
**www.iLiveElectronics.com.**



Specifications are subject to change without notice.  
Copyright © 2016 Digital Products International (DPI, Inc.)  
All other trademarks appearing herein are the property of their respective owners.



**Bluetooth Earphone**  
*User's Guide for Model SAEB16*

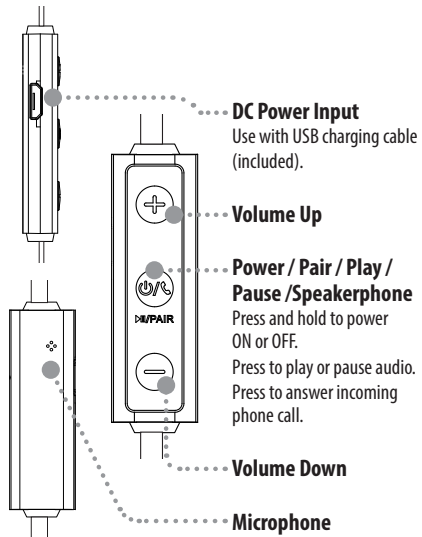
## Features

- Supports Bluetooth
- Supports profile A2DP (Advanced Audio Distribution Profile)
- Digital volume control
- Built-in microphone
- Micro-USB port for battery recharge
- Wireless range: 33 feet
- DC battery power: built-in rechargeable lithium ion battery
- Battery life: approx. 4 hrs at 100% volume  
6 hrs at 50%

## Includes

- 3 pairs of eartips: 1 small, 1 medium, 1 large
- Micro-USB to USB charging cable

## Overview & Controls



## Battery Power

Initial charge time is approximately 2 hours.

1. Using a **Micro-USB to USB** cable (included), connect to the USB port of a powered on computer or USB power adaptor to charge the unit. Charge fully before use.

## LED Indicators

Status	Indicators
Power On	Flashing blue light
Low Battery	Flashing red light
Charging	Red light
Finished Charging	Blue light
Pairing Wireless	Flashing red and blue lights

## Pairing Bluetooth & Playing Audio

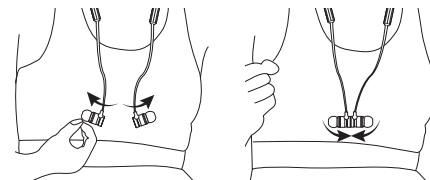
If your device should become unpaired, or you find it is unable to connect normally, repeat the steps below.

1. Press and hold the **Play/Pause/Speakerphone/Pair** button for **4 seconds**. to power on and begin pairing. *When pairing, remain within 3 feet of the unit.*
2. Using the controls on your Bluetooth device, select **SAEB16** in your Bluetooth settings to pair. *If your device requests a password, enter the default password **0000**.*
3. Refer to the user's manual for your specific device for instructions on pairing and connecting Bluetooth devices. *After initial pairing, the unit will stay paired unless unpaired manually by the user, or erased due to a reset of the device.*
4. Use the controls on the connected Bluetooth device to **select and begin playing** an audio. Audio played from the connected Bluetooth device should now be heard through the unit.
5. To play or pause audio, press the **Play/Pause** button, or use the controls on the connected Bluetooth device.

## Using the Speakerphone

1. To accept a call, press the **Speakerphone** button, or use the controls on the connected phone.
2. To end a call, press the **Speakerphone** button, or use the controls on the connected phone.
3. To re-dial the last dialed number, press the **Speakerphone** button twice.

## Magnetic Play/Pause Feature



Pull earplugs apart to begin playing audio.

Connect earplugs to pause audio.