

## Safety Precautions

The following information is intended to maintain user safety and prevent property damage or accidental harm. Read the following carefully and always use the product correctly. ※ The possible degree of risk and damage created by not following the warnings and safety precautions is classified as follows.

### Warning Failure to observe the following warnings may result in death or serious injury.

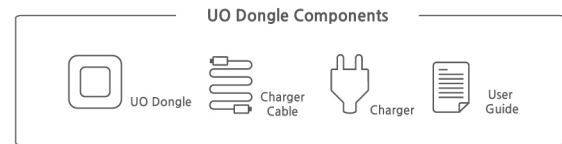
Do not drop the product in water or store it in a humid location. This product has no waterproof function exposing the product to moisture or water may result in fire or electrical shock. / Do not cover the product or place any object on the top of the product. Doing so may result in product damage or malfunction. / Do not use the product when a malfunction has occurred. When a malfunction occurs, turn the product off and consult a sales agent or call center. / Do not expose the product to direct sunlight or excessive heat (from a furnace, microwave oven, hair dryer, etc.). Doing so may result in explosion, projector deformity, or malfunction. / Do not install the product in a dusty location. Doing so may result in fire. / Do not place flammable materials (such as flammable spray) next to the product. Doing so may result in fire. / Do not insert hair pins, other metal objects, or flammable materials such as paper or match sticks into the projector. Doing so may result in fire or electrical shock. / Never open the projector cover. Opening the projector cover should only be done by a service engineer. Doing so is dangerous because insulation voltage flows inside the projector. / The user should never install, disassemble or modify the projector on their own. Doing so may result in malfunctions for which the user will be solely responsible. / If the projector malfunctions, cease usage immediately. If any debris or water enters the projector, or if the projector begins to emit smoke, turn it off and consult a sales agent. / Do not cover the ventilation opening with table cloths or curtains. Doing so may increase the internal temperature, resulting in fire. / Use the projector within the recommended usable temperature range (0 to 35 degrees). Failure to do so may degrade performance or cause hardware damage. / Do not install the product in a humid location such as a bathroom, a location exposed to wind and rain, or a location where the projector may be splashed with water. Doing so may result in fire or electrical shock. / If the projector emits smoke or a strong odor, cease usage and turn it off by pressing the power button, then unplug the projector from the electrical outlet. Continued use may result in electrical shock or fire. / If any debris or water enters the projector, press the power button on the main body of the wireless device, then unplug the projector from the outlet and consult a sales agent. Failure to do so may result in fire or electrical shock. / Do not stare directly at the lens while the product is being operated. The intense light may damage your eyes.

### Caution Failure to observe the following warning may result in injury or property damage.

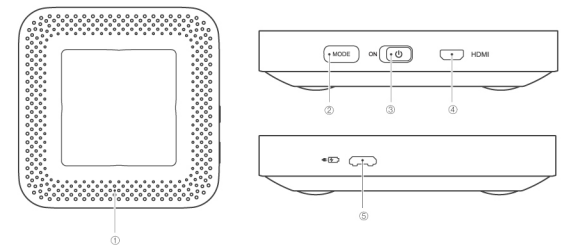
Do not touch the projector or any components with wet or oily hands. Doing so may result in product damage or malfunction. / Do not place the projector near a magnet or magnetic field. Doing so may result in product damage or malfunction. / Do not apply excessive impact to the product. Doing so may result in product damage or malfunction. / Do not store the product in a place where high temperatures of over 50 degrees occur. / Charge the battery at least once a month in order to maintain the battery life. / Do not allow any debris or dust to enter the production connection terminal or connection cable. / Smartphone applications may influence the mirroring operation. If possible, use the mirroring function after closing other applications. / Distance between the smartphone and the product may cause the image to become unstable, so maintain a distance of less than two meters between the product and the smartphone. / The image signal may also become unstable due to the surrounding wireless environment (surrounding Wi-Fi signal, obstacles between the product and smartphone, etc.). / This is a wireless product, so its performance may vary according to the wireless environment and distance between the product and other wireless devices. / The availability and method of the mirroring connection may vary according to the device. Check before using.

## Things to check before using the product

The product components are subject to change, without prior notice, for purposes of performance improvement. Except for basic components, separately sold components may be purchased separately.



## Name of each part



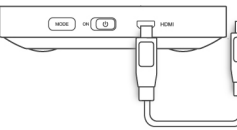
①	LED status indication	It indicates the ON/OFF status of the product and the status information of the battery charging in progress.
②	MODE button	Press the MODE button to change the wireless connection mode. (Miracast / iOS) Press the MODE button for more than 5 seconds to enter the settings mode.
③	Power button	You can turn the power on or off.
④	HDMI	The Display output device HDMI terminal is connected.
⑤	Power terminal	This is where the Micro USB (5V / 2A) adaptor is connected.

※ The exterior as portrayed in this manual may appear different from the actual product (product is subject to change without prior notice for the purpose of improving product performance).

## Installation

### Installing it on a Display output device

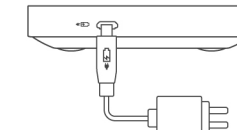
1. Check if the HDMI terminal is provided in the back of the Display output device.
2. Connect Dongle to the Display output device using the HDMI cable.
3. Connect the power cable to the Micro USB terminal on the side of Dongle and connect the adaptor to the electrical outlet.
4. Turn on Dongle and set the HDMI to the external input of the Display output device.



Information  
· This product provides normal output in NTSC method, and normal output may not be possible in PAL method.

## Charging the battery

1. Connect the Micro USB to the main body as shown in the figure.
2. While charging, the Red LED will be turned on.
3. When charging is finished, the Red LED will be off.

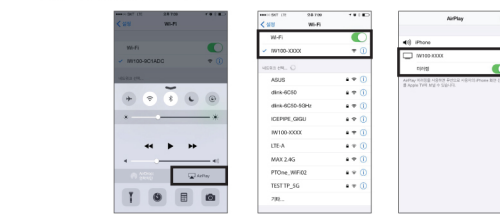


Information  
· Use the adaptor provided with the product. When using an adaptor other than that provided with the product, the product may not operate normally. Charging with a proper adaptor takes about four hours.

## Connecting iOS device wirelessly (iPhone, iPad, MacBook)

1. **Selecting iOS Mode:** Turn on the device and press Mode, then select iOS wireless connection mode.
2. **Turning on the Wi-Fi function:** Activate the Wi-Fi function on the smartphone.
3. **Finding and connecting Display output device from Wi-Fi connection window:** Find and connect Display output device from the list of available devices for Wi-Fi connection.
4. **Executing AirPlay:** Select AirPlay ( ) from the bottom scroll menu of an iPhone or iPad, or from the top menu bar of a MacBook to open the AirPlay settings screen. Select Smart Beam to connect.
5. **Mirroring On / Off:** You can turn on or off the mirroring function on an iPhone/iPad. When you turn on the mirroring function, the screen of the smart device is copied to Display output device so that it may be viewed on a large screen. When the mirroring function is off, only media files (video, music, photo) are playable on Display output device.

## <Example of AirPlay Setup>



※ Caution: Online streaming content on YouTube and Naver which has copyright protection (such as Digital Rights Management) may not be played on the projector.

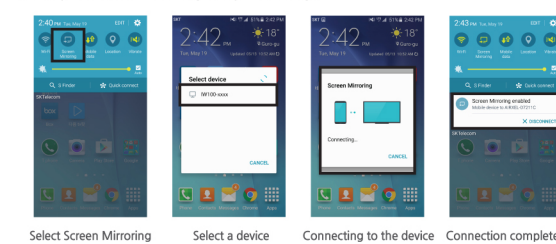
## Connecting an Android device wirelessly

1. **Selecting the Android mode:** Turn on Dongle, press Mode, and select the Android Wireless Connection Mode.
2. **Turning on the Wi-Fi function:** Activate the Wi-Fi function on the smartphone.
3. **Turning on the Screen Mirroring / Miracast function:** Activate the Screen Mirroring function on the smartphone. Depending on the smartphone manufacturer, the name of the setup function may vary.

Manufacturer	Names of Settings Functions	Smartphones that Support Functions
Samsung	Scroll Menu on top of the screen > Screen Mirroring	Galaxy S3, S4, S5, S6, Note 2, Note 3, Note 4, Note 10.1
	Settings > Screen Mirroring	Galaxy S3, S4, Note 2, Note 3, Note 10.1
LG	Settings > Connect and File Exchange > Miracast	Optimus Vu2, G, G Pro, G2, G3, G4
Pantech	Settings > More Network > Miracast	Vega Iron and subsequent models
Google	Settings > Display > Screen Transmission	Nexus S and subsequent models

4. **Connecting to the beam with the smartphone:** When you turn on the Screen Mirroring/Miracast function from the settings of the smartphone, available devices for connection will be searched for automatically. On the search screen, select Beam. When the connection is made, the smartphone screen will be projected via the beam screen.

## <Example of Screen Mirroring Setup - Samsung>



Select Screen Mirroring    Select a device    Connecting to the device    Connection completed

Information  
· Miracast (Screen Mirroring) function is available on smartphones with Android 4.2 or above. Users are recommended to use the latest version of their smartphone operating system.  
· Depending on the specifications of the smartphone or the resolution of the original file, video quality or resolution may vary.  
· If the aspect ratio of the playing screen and the default aspect ratio of Display output device do not match, some parts of the screen may be cut off.

## Connecting external wireless router

1. Press the Mode button on the wireless connection stand-by screen for 5 seconds to enter the AP connection mode.
2. Connect "IW100 xxxx" from the "Wi-Fi" settings of the smart phone or notebook computer.
3. Enter the IP shown on the screen into the address bar of the web browser on the smartphone or notebook computer to change settings.
4. Select "Connect to an access point" from the connected web page and press the Scan button to display AP currently available for connection.
5. Select AP which you intend to use. When the connection is made, the name of the connected AP is displayed on the information display window.

How to update the software  
· When Dongle is wirelessly connected to the Internet and there is new software available, a Software Update menu will automatically appear. When the user presses the Update Execution button, the software update will be performed.

## Regarding the LED Status Display

Item	Status information	LED status
Charging information	Battery charging in progress	Red (On)
	Battery fully charged	Red (Off)
Battery level warning	Battery level is below 20%	Blue (flashing)

Information  
· The charging time and the battery life may vary depending on how charged the battery is and the environment in which the product is used.  
· The battery has a limited lifetime. Its lifetime will gradually decrease after purchase. If the battery life has been reduced by more than 50% since the date of purchase, replace it with an official battery (sold separately) from the manufacturer.

## Information of Product Specifications and Certifications

Product Specification information  
**UO Dongle (IW100) | Protocol** Screen Mirroring, WiDi, iOS / **Wi-Fi specifications** 802.11n (2.4GHz/5GHz) **Supported OS** Android 4.2 or higher, Windows 8.1 or higher, iOS 4.3 or higher **Battery** 3.7V, 1250mAh / **Size** (mm) 80(W) x 80(D) x 14.5(H) / **Power** 5V/2A

Product Warranty  
**Manufacturer/Country:** INNOIO CO., LTD. / KOREA  
**Name of device:** UO Dongle **Model name:** IW100  
**Certification No.:** MSIP-CRM-IO-IW100 FCC ID : 2AERY-IW100  
**Product Certifications**  
**KC :** Certification of broadcasting and communication equipment  
**FCC :** Certification of Federal Communications Commission  
**CE :** European industrial stability and quality certification



## Things to check before reporting a malfunction

If the product does not operate properly, check the following before requesting service. If the problem persists after troubleshooting, consult the call center.

Symptoms	Troubleshooting
I cannot turn the power on.	· Ensure the product is properly charged. · Ensure the adaptor is properly plugged into the electrical outlet and correctly connected to the product while charging.
The screen stops or a mosaic appears when playing a video file.	· If the screen freezes or part of the screen is not displaying during operation, degraded Wi-Fi performance may be the cause. This occurs especially when a replacement product is used as the power supply for the smartphone or the adaptor is faulty. At this time, fully charge the smartphone, connect it to the product, and use the with battery power.
Wireless connection cannot be made.	· Wi-Fi signal interference from the surrounding environment may interrupt the Wi-Fi connection. If a Wi-Fi connection cannot be made, turn the product power off and on again, or move to a new location and attempt to connect again.
There is no sound.	· If there is no sound, check the volume level of the smartphone.
The screen turns off frequently.	· If the automatic lock function is set on the smartphone, or there is no image signal input for a certain period of time, the screen may turn off.

## NOTE:

This equipment has been tested and found to comply with the limits for a Class B digital device, pursuant to part 15 of the FCC Rules. These limits are designed to provide reasonable protection against harmful interference in a residential installation. This equipment generates, uses and can radiate radio frequency energy and, if not instructions, may cause harmful interference to radio communications. However, there is no guarantee that interference will not occur in a particular installation. If this equipment does cause harmful interference to radio or television reception, which can be determined by turning the equipment off and on, the user is encouraged to try to correct the interference by one or more of the following measures:

- Reorient or relocate the receiving antenna.
- Increase the separation between the equipment and receiver.
- Connect the equipment into an outlet on a circuit different from that to which the receiver is connected.
- Consult the dealer or an experienced radio/TV technician for help.

## WARNING:

This equipment may generate or use radio frequency energy. Changes or modifications to this equipment may cause harmful interference unless the modifications are expressly approved in the instruction manual. The user could lose the authority to operate this equipment if an unauthorized change or modification is made.

This device complies with part 15 of the FCC Rules. Operation is subject to the following two conditions:  
(1) This device may not cause harmful interference, and (2) this device must accept any interference received, including interference that may cause undesired operation.

## CE

Hereby, Innoio declares that this device is in compliance with the essential requirements and other relevant provisions of Directive 1999/5/EC.

During this device operation, in order to meet RF maximum permissible exposure safety guidelines, a minimum distance of 20cm shall be maintained between this device and personnel.

This device is restricted to indoor use only within the 5.15 ~ 5.25GHz Band.