

# CDMCS-110 User Guide

v1.0.0

## Table of Contents

Product Interfaces and Components	-----	3
mconnect Control App and PC setup program	-----	4
WiFi and LAN Connection	-----	4
WiFi Connection – Using AP mode	-----	5
WiFi Connection – WPS	-----	7
WiFi Connection – After LAN Connection	-----	7
Device Name Change	-----	8
Static IP Setting	-----	8
Firmware Update	-----	9
Operations of LEDs & KEYS	-----	10
Guide for mconnect Control App	-----	11

## Product Interfaces & Components



① Power & Ready LED

② WiFi LED

③ Bluetooth LED

④ Headphone Jack (3.5mm)



⑤ RCA Analogue Audio Out

⑥ Optical S/PDIF Digital Out

⑦ USB (For memory stick)

⑧ LAN RJ45

⑨ Bluetooth Key

⑩ WiFi Key

⑪ Power Jack (DC 5V)

## mconnect Control App and PC setup program

1. **“mconnect Control “** is a dedicated control app for cdmcs-110, available on Apple App Store and Google Play Store.



\* cdmcs-110 supports Standard DLNA , so any DLNA apps can be used to control cdmcs-110. But proprietary control functions, such as device setting and multi-room control are provided only by mconnect Control app.



2. PC setup program is provided by ConversDigital for setting cdmcs-110. Setup functions, such as WiFi network connection and firmware update can be done by PC setup program.

## WiFi and LAN Connection

**CDMCS-110** supports WiFi and Wired LAN connection.

1. If you want to use LAN, connect EV board to your AP router with LAN cable.  
No further steps are required.  
(If you want to use Static IP, please refer to IP setup in following pages.)
2. WiFi network connection can be done by below three methods.
  - ① Activate soft AP mode, and then select a WiFi network with control app or PC setup program.
  - ② Use WPS button.
  - ③ Connect LAN cable to your AP router, and then select a WiFi network with control app or PC setup program.

## WiFi Connection – 1-1) Using AP mode with Control app

- Press WiFi button on rear panel for 2~5 seconds to activate AP mode.
- You will find a WiFi network of “CDSXXXXXXX” in WiFi list of your mobile device or PC.
- Select the “CDSXXXXXXX” and connect to it.
- The password is “password”.



### [By mconnect Control App]

- Execute mconnect Control app and touch the setup icon on upper left corner.
- Select “Device Setup” and you will find the name of cdmcs-110 in the device list.
- Select the device and the setup screen will be shown.
- At the setup screen, touch “WiFi Network Selection”.
- You will see the list of available WiFi networks. Choose a network you want to connect.
- Type in password of the network.
- Touch “Join this network”, and then cdmcs-110 will be reset to connect to the WiFi network.
- Your mobile device will be disconnected from “CDSxxxxxxx” network.
- Connect your mobile device to the same WiFi network which the cdmcs-110 is connected.
- You will find the EV board in “Play to” list of mconnect Control app.

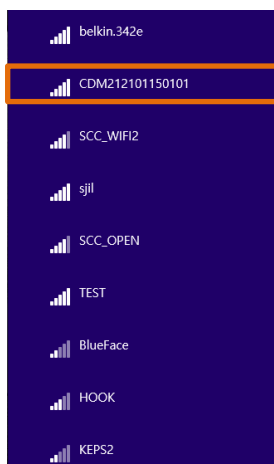


- cdmcs-110 will remember the WiFi network .
- When you power OFF and ON the EV board, it will connect to the WiFi network automatically.
- You can remove a WiFi network from saved list. Select the WiFi network and then select “forget this network”.

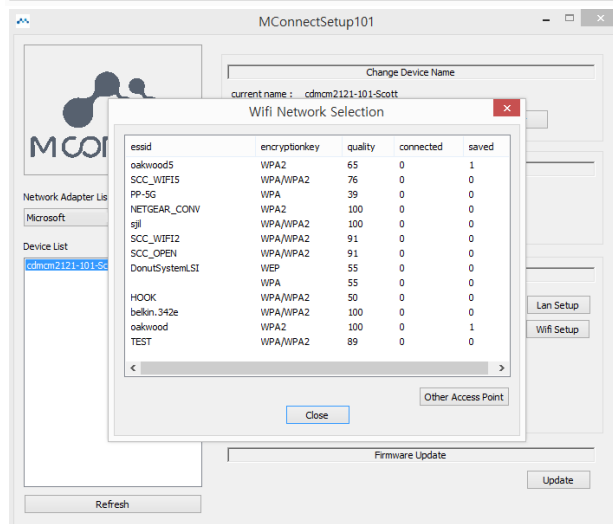
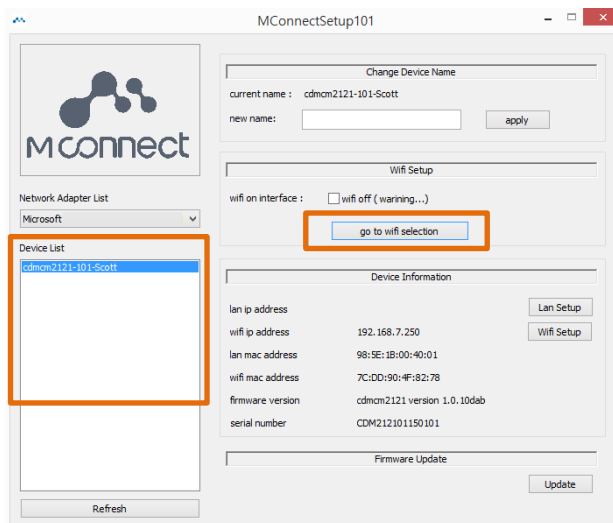
## WiFi Connection – 1-2) Using AP mode with PC setup program

### [By PC setup program]

- Connect your PC to cdmcs-110's "CDSxxxxxxx" network.
- Execute mconnect Setup program.
- You will find the name of EV board in the list at left window of setup program.
- Select the device and the setup screen will be shown.
- At the setup screen, click "go to WiFi selection".
- You will see the list of available WiFi networks. Choose a network you want to connect.
- Type in password of the network.
- Click "Join this network", and then cdmcs-110 will be reset to connect to the WiFi network.
- Your PC will be disconnected from "CDSxxxxxxx" network.
- You will find the EV board in "Play to" list of mconnect Control app or other DLNA control point.



WiFi list on PC



PC Setup Program's Screen

## WiFi Connection – 2) Using WPS button

- Press WPS button on cdmcs-110 for 7~10 seconds. The WPS LED will pulse.
- Press WPS button on your AP router.
- cdmcs-110 will connect to your AP router.

## WiFi Connection – 3) After LAN Connection

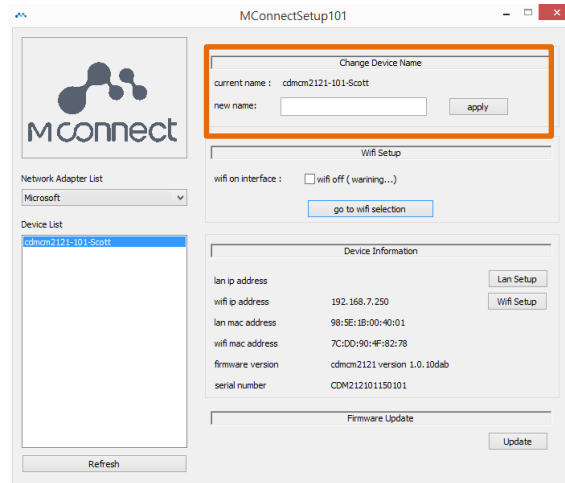
- Connect cdmcs-110 to your AP router with LAN cable.
  - Connect your mobile phone or PC to the same AP router.
  - Execute mconnect Control app or PC setup program.
  - The rest of procedures are same with “Using AP mode” method.
  - After making WiFi connection, **disconnect the LAN cable and power OFF and ON** cdmcs-110.
- \* Otherwise, cdmcs-110 has both WiFi and LAN IP, which may cause a problem to communicate with other devices.

## Device Name Change

- cdmcs-110's name on the network can be changed by Control app or PC setup program.



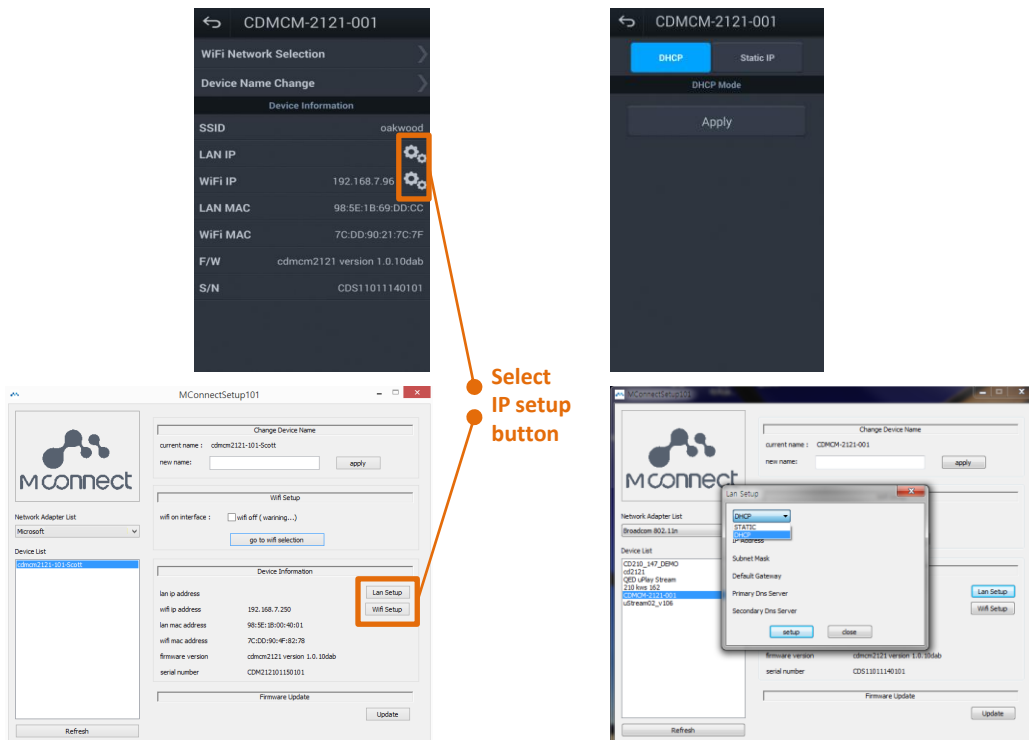
mconnect Control App's Screen



PC Setup Program's Screen

## Static IP Setting

- If you want to use static IP, instead of DHCP, it can be done at IP setup screen on Control app or PC setup program.





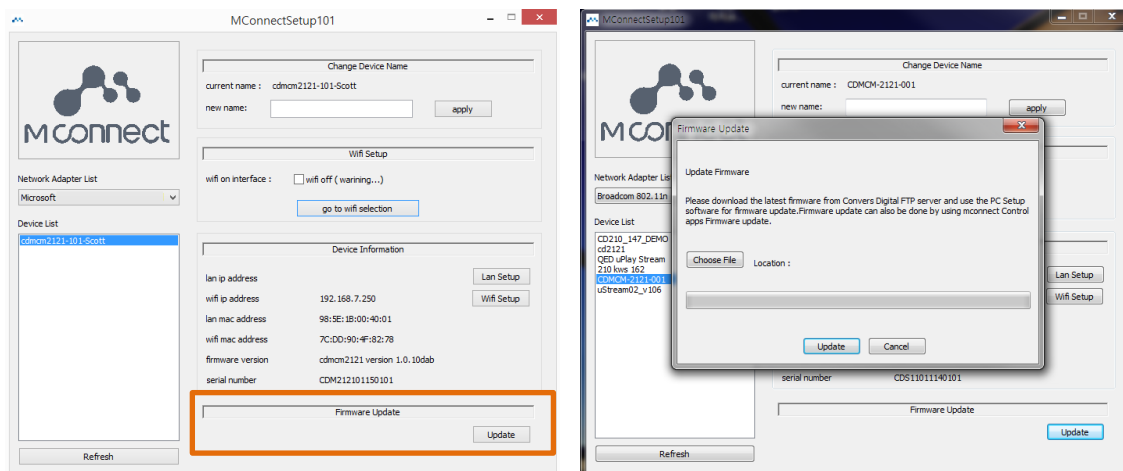
## Firmware Update

- Firmware update is available via two methods.
  - Download new firmware to your PC and then using PC setup program.
  - Firmware update via Internet from ConversDigital's server by using mconnect Control app.

\* NOTE: Please **DO NOT power off** when firmware is updating.

## Firmware Update with PC Setup Program

- Download new firmware provided by ConversDigital to your PC.
- Execute PC setup program and click "Firmware Update" button.
- Locate and select new firmware in your PC.



## Firmware Update via Internet (from ConversDigital's server)

- mconnect Control app will show a notice for firmware update when it is available.
- cdmcs-110 and your mobile phone need to connect **Internet accessible** network.
- Select "Firmware Update" in the list of setup button.
- Select a device to update firmware.
- New firmware will be downloaded to cdmcs-110 directly from ConversDigital's server.

## Operation of LEDs and Keys

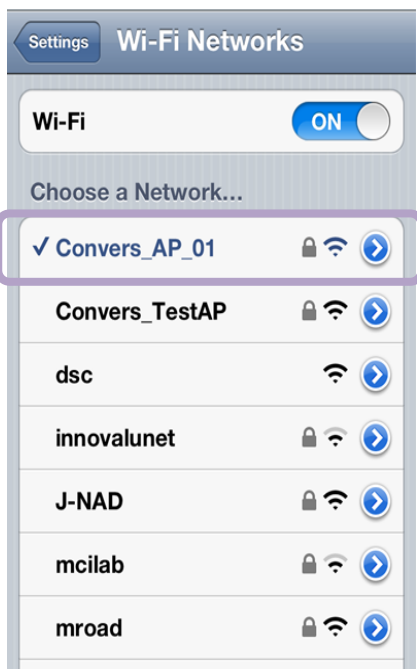
KEYs	Operation
WiFi	- 2~5 seconds: Soft AP mode - 7~10 seconds: WPS mode
BT (Bluetooth)	- 2~3 seconds: Disconnect current pairing (or activated from sleep mode) and go to new pairing mode.

EVENT	LED	Operation
Power ON	Power LED	Orange until ready
Firmware Booting Completion	Ready LED	Green steadily
WiFi Connected	WiFi LED	On – steady green
WiFi – Soft AP is activated	WiFi LED	Blink slowly
WiFi – WPS is activated	WiFi LED	Blink fast
BT Connected	BT LED ON	ON – steady blue
BT Pairing mode is activated	BT LED	Blink fast
During Firmware Update	Power LED & WiFi LED	Both power and WiFi LED blink

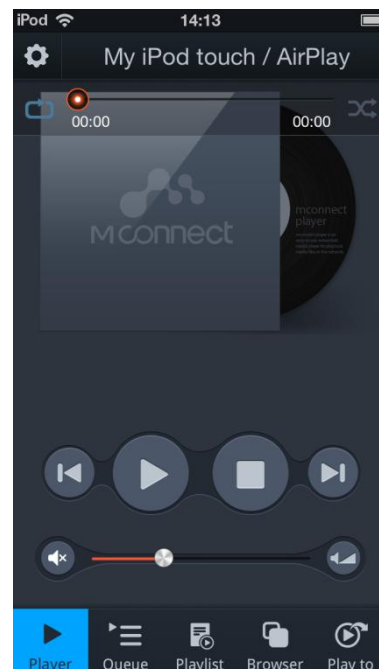
# Guide for mconnect Control App

## MAKE WiFi CONNECTION and OPEN MCONNECT CONTROL

Connect your mobile device to the same network that mconnect hardware is connected.



Select a Wi-Fi network on the setting menu of your mobile device.  
(Same network with other devices are connected.)




Execute mconnect Control on your mobile device.

## FUNCTIONAL DESCRIPTIONS

**"Setup":**  
Setup functions in below.

- Device Setup
- Firmware Update
- Cloud Setup
- Gapless ON
- Rate on AppStore
- Contact Conversdigital
- App Info

**"Previous/Play/Stop/Next":**  
Play & stop music, next & previous music.



**"Device Information":**  
Information of current playback device by touching this bar.

**"SEEK":** FIND and MOVE position in a track.

**"Playlist":** User created list of favorite music,.

**"play to":** To see remote playback devices on the network. Multi-room group is set in this menu.

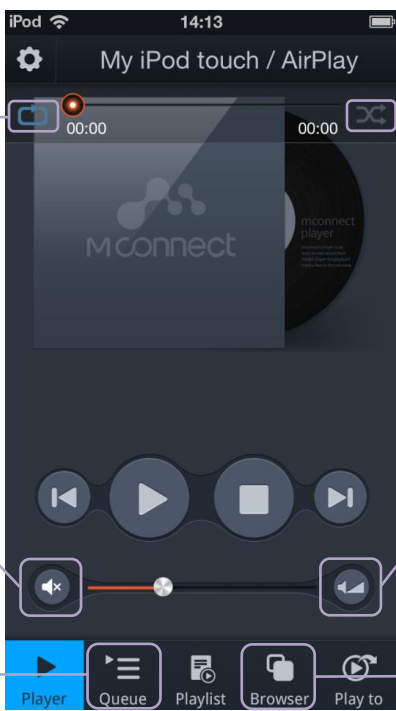
**"Repeat":**  
To control repetition of music playback. Continuous, once, and current song.

**"Random/ Sequential":** Option for retrieving playlist.

**"Mute"**

**"micro volume control":** Control volume with micro control bar.

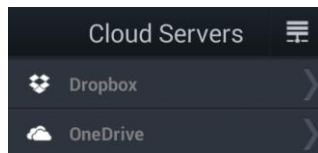
**"Queue":**  
List of music currently playing.



**"Browser":** To see server devices on the network.

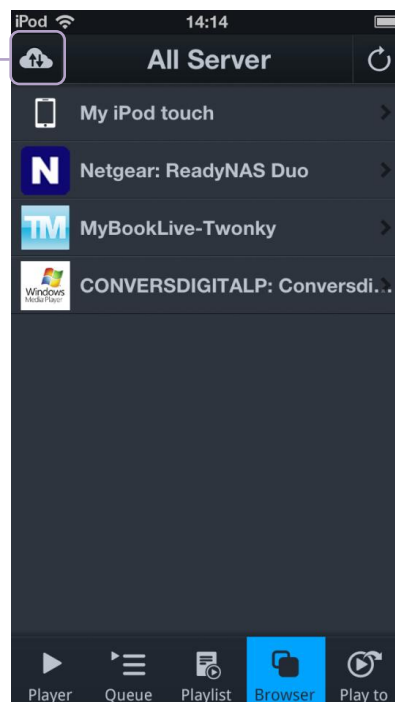
## DISCOVER SERVER DEVICES

**“Cloud”:** You will see Dropbox & OneDrive storages.



By touching the “Browser” button, you will see the list of server devices on your local network.

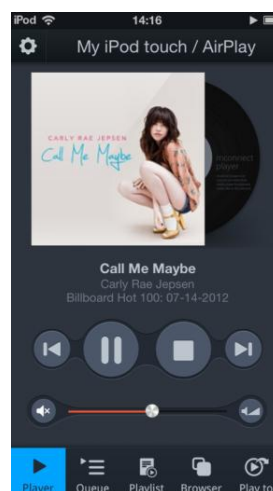
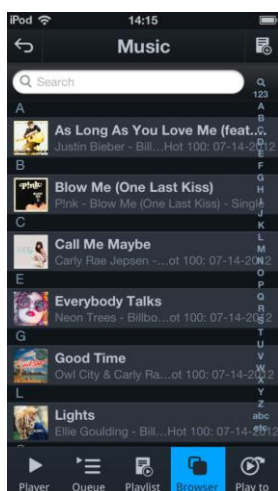
mconnect Control finds DLNA/UPnP compatible devices such as Network Storages and Windows PCs.



## SELECT MUSIC and PLAY

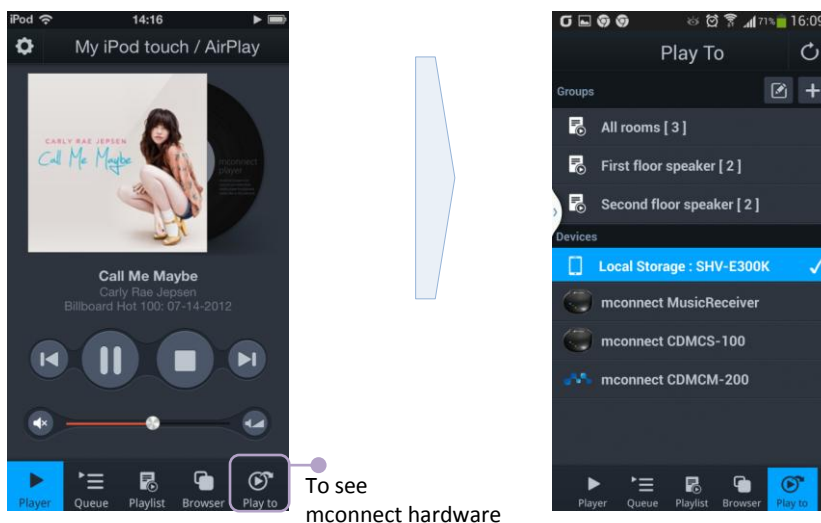
Select a server device in the server list. Then sub-categories are seen. The category and tree structure may vary from devices.

Select a music in the list, then the music is played by selected playback device in “Play to” list. All the music in selected folder is automatically listed on the “Queue”.



## SEND MUSIC TO MCONNECT HARDWARE

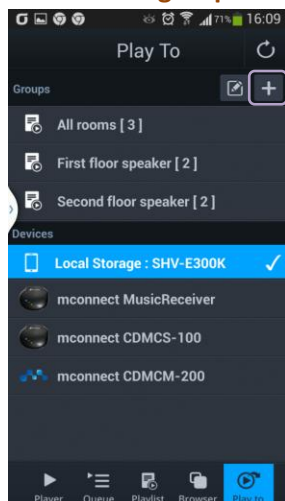
To send music stream to mconnect hardware, touch “play to” button. Then you will see available mconnect hardware and group of speakers in the network. Select a device or a group to play music.



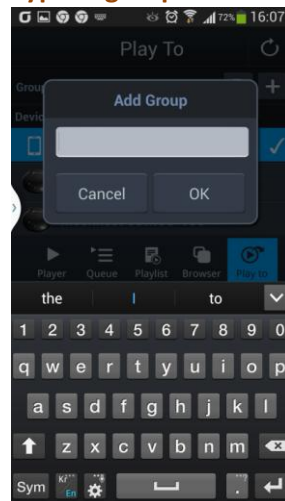
## MULTI-ROOM Control: STREAMING MUSIC TO MULTIPLE SPEAKERS

mconnect solution supports Multi-room function to play music to multiple speakers simultaneously. You can make group of speakers to play same music simultaneously.

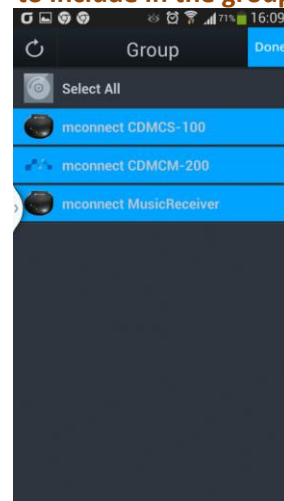
### Create new group



### Type in group name

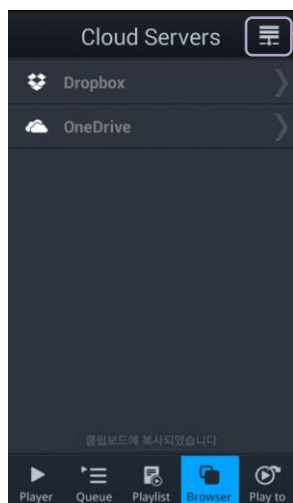


### Select devices to include in the group

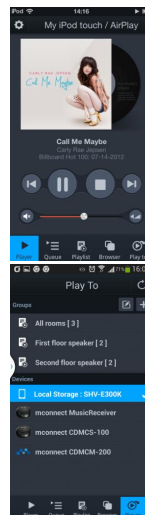


## CLOUD STORAGE ACCESS and REMOTE PLAYBACK

mconnect Control provides cloud storage access and playback to remote renderers. If it is first time to access your cloud account with mconnect Control, you will see a screen of authorization for account access.



Go back to Local Server List



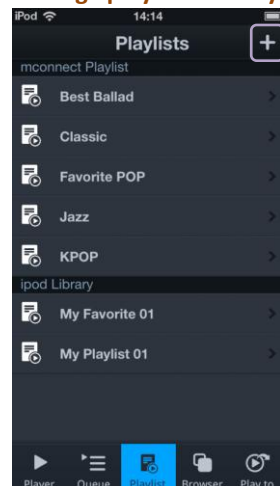
Play with your mobile device.

Play to remote playback device.

## PLAYLIST MANAGEMENT ACROSS SERVERS

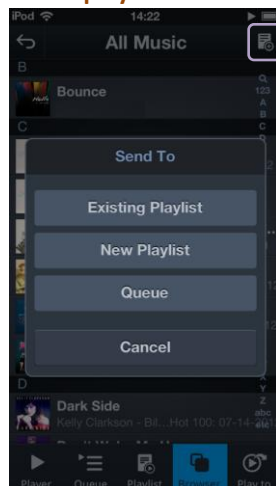
mconnect Control provides playlist management across servers. You can put music list stored in different servers into a playlist. mconnect Control automatically detects whether server devices are on the network, and makes the list available.

**Manage playlist at "Playlist"**

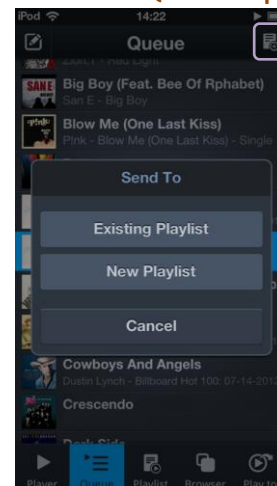


Create new playlist

**Send to playlist at "Browser"**



**Send current "Queue" to playlist**



If you have further questions, please feel free to contact  
ConversDigital's Technical Support:  
[conversd@conversdigital.com](mailto:conversd@conversdigital.com)



## **FCC Information to User**

This equipment has been tested and found to comply with the limits for a Class B digital device, pursuant to Part 15 of the FCC Rules. These limits are designed to provide reasonable protection against harmful interference in a residential installation. This equipment generates, uses and can radiate radio frequency energy and, if not installed and used in accordance with the instructions, may cause harmful interference to radio communications. However, there is no guarantee that interference will not occur in a particular installation. If this equipment does cause harmful interference to radio or television reception, which can be determined by turning the equipment off and on, the user is encouraged to try to correct the interference by one of the following measures:

- Reorient or relocate the receiving antenna.
- Increase the separation between the equipment and receiver.
- Connect the equipment into an outlet on a circuit different from that to which the receiver is connected.
- Consult the dealer or an experienced radio/TV technician for help.

## **Caution**

Modifications not expressly approved by the party responsible for compliance could void the user's authority to operate the equipment.

**FCC Compliance Information :** This device complies with Part 15 of the FCC Rules. Operation is subject to the following two conditions: (1) This device may not cause harmful interference, and (2) this device must accept any interference received, including interference that may cause undesired operation

## **IMPORTANT NOTE:**

### **FCC RF Radiation Exposure Statement:**

This equipment complies with FCC RF radiation exposure limits set forth for an uncontrolled environment. This equipment should be installed and operated with a minimum distance of 25 centimeters between the radiator and your body. This transmitter must not be co-located or operating in conjunction with any other antenna or transmitter.

## CAUTION

To reduce the risk of electric shock, do not remove the top cover (or the rear section).  
No user serviceable parts inside, refer servicing to qualified personnel.



This symbol, wherever it appears, alerts you to the presence of uninsulated dangerous voltage inside the enclosure-voltage that may be sufficient to constitute a risk of shock.



This symbol, wherever it appears, alerts you to the important operating and maintenance instructions in the accompanying literature. Please read the manual.

- 1) Read these instructions.
- 2) Keep these instructions.
- 3) Heed all warnings.
- 4) Follow all instructions.
- 5) Do not use this equipment near water.
- 6) Do not use near any heat sources such as radiators, heat registers, stove, or other equipment that produce heat.

### CAUTION

**RISK OF EXPLOSION IF BATTERY IS REPLACED  
BY AN INCORRECT TYPE.  
DISPOSE OF USED BATTERIES ACCORDING  
TO THE INSTRUCTIONS**

### European CE notice to users and product statements

This product is CE marked according to the provisions of the R&TTE Directive(99/5/EC). Hereby, CONVERSDIGITAL CO., LTD. declares that this product is in compliance with the essential requirements and other relevant provisions of Directive 1999/5/EC.

For further information, please contact [http:// www.conversdigital.com](http://www.conversdigital.com)

# CE1177

CONVERSDIGITAL CO., LTD.

704 KSIA BD, 182 Pangyoyeok-ro, Bundang-gu, Seongnam,-si,  
Gyeonggi-do, Korea 463-400

Tel: +82-31-759-5088

Fax: +82-31-759-5089

Web: [http:// www.conversdigital.com](http://www.conversdigital.com)

**CONTACT INFORMATION**

Manufacturer Address : 704 KSIA BD, 182 Pangyoyeok-ro, Bundang-gu, Seongnam,-si, Gyeonggi-do, Korea 463-400

To locate in-country CONVERSDIGITAL CO., LTD., distributors of the AUNNEX NETWORK DAC please refer to the CONVERSDIGITAL CO., LTD. Website <http://www.conversdigital.com>

These distributor(s) represent local contacts for this product.

**CORPORATE HEADQUARTERS:**

CONVERSDIGITAL CO., LTD.

704 KSIA BD, 182 Pangyoyeok-ro, Bundang-gu, Seongnam,-si, Gyeonggi-do, Korea 463-400

Tel: +82-31-759-5088

Fax: +82-31-759-5089

Web: [http:// www.conversdigital.com](http://www.conversdigital.com)

This device complies with Industry Canada license-exempt RSS standard(s).

Operation is Subject to the following two condition: (1) this device may not cause interference ,and (2) this device must accept any interference, including interference that may cause undesired operation of the device.

**EUROPEAN UNION “DECLARATION OF CONFORMITY”**

**DECLARATION OF CONFORMITY**

**CONVERSDIGITAL CO., LTD.**

704 KSIA BD, 182 Pangyoyeok-ro, Bundang-gu, Seongnam,-si, Gyeonggi-do, Korea 463-400

declare under our sole responsibility that the product(s)

AUNNEX NETWORK DAC– AUNNEX-110

to which this declaration relate(s) is in conformance with the following standards:

EN 301 489-1 V1.9.2:2011

EN 301 489-17 V2.2.1:2012

EN 60950-1:2006/A2:2013

EN 300 328 V1.8.1:2012

following the provisions of the 1999/5/EC Directives.