
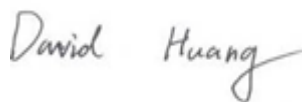



# RF TEST REPORT



Report No.: 18070475-FCC-R2

Supersede Report No.: N/A

Applicant	Hale Devices, Inc.	
Product Name	Bluetooth Headphone	
Model No.	Aiwa Arc-1-US, Arc-1-XX (X=blank, 0~9, A~Z)	
Serial No.	N/A	
Test Standard	FCC Part 15.247, ANSI C63.10: 2013	
Test Date	April 29 to May 10, 2018	
Issue Date	May 11, 2018	
Test Result	<input checked="" type="checkbox"/> Pass <input type="checkbox"/> Fail	
Equipment complied with the specification	<input checked="" type="checkbox"/>	
Equipment did not comply with the specification	<input type="checkbox"/>	
		
Aaron Liang Test Engineer	David Huang Checked By	
This test report may be reproduced in full only Test result presented in this test report is applicable to the tested sample only		

Issued by:

**SIEMIC (SHENZHEN-CHINA) LABORATORIES**

Zone A, Floor 1, Building 2 Wan Ye Long Technology Park

South Side of Zhoushi Road, Bao' an District, Shenzhen, Guangdong China 518108

Phone: +86 0755 2601 4629801 Email: [China@siemic.com.cn](mailto:China@siemic.com.cn)

## Laboratories Introduction

SIEMIC, headquartered in the heart of Silicon Valley, with superior facilities in US and Asia, is one of the leading independent testing and certification facilities providing customers with one-stop shop services for Compliance Testing and Global Certifications.



In addition to testing and certification, SIEMIC provides initial design reviews and compliance management throughout a project. Our extensive experience with China, Asia Pacific, North America, European, and International compliance requirements, assures the fastest, most cost effective way to attain regulatory compliance for the global markets.

### Accreditations for Conformity Assessment

Country/Region	Scope
USA	EMC, RF/Wireless, SAR, Telecom
Canada	EMC, RF/Wireless, SAR, Telecom
Taiwan	EMC, RF, Telecom, SAR, Safety
Hong Kong	RF/Wireless, SAR, Telecom
Australia	EMC, RF, Telecom, SAR, Safety
Korea	EMI, EMS, RF, SAR, Telecom, Safety
Japan	EMI, RF/Wireless, SAR, Telecom
Singapore	EMC, RF, SAR, Telecom
Europe	EMC, RF, SAR, Telecom, Safety

Test Report No.	18070475-FCC-R2
Page	3 of 46

This page has been left blank intentionally.

# CONTENTS

1. REPORT REVISION HISTORY.....	5
2. CUSTOMER INFORMATION .....	5
3. TEST SITE INFORMATION.....	6
4. EQUIPMENT UNDER TEST (EUT) INFORMATION .....	7
5. TEST SUMMARY .....	8
6. MEASUREMENTS, EXAMINATION AND DERIVED RESULTS .....	9
6.1 ANTENNA REQUIREMENT.....	9
6.2 DTS (6 DB) CHANNEL BANDWIDTH .....	10
6.3 MAXIMUM OUTPUT POWER .....	12
6.4 POWER SPECTRAL DENSITY .....	14
6.5 BAND-EDGE & UNWANTED EMISSIONS INTO RESTRICTED FREQUENCY BANDS .....	16
6.6 AC POWER LINE CONDUCTED EMISSIONS.....	19
6.7 RADIATED EMISSIONS & RESTRICTED BAND .....	25
ANNEX A. TEST INSTRUMENT.....	31
ANNEX B. EUT AND TEST SETUP PHOTOGRAPHS.....	32
ANNEX C. TEST SETUP AND SUPPORTING EQUIPMENT.....	41
ANNEX D. USER MANUAL / BLOCK DIAGRAM / SCHEMATICS / PARTLIST .....	45
ANNEX E. DECLARATION OF SIMILARITY.....	46

## 1. Report Revision History

Report No.	Report Version	Description	Issue Date
18070475-FCC-R2	NONE	Original	May 11, 2018

## 2. Customer information

Applicant Name	Hale Devices, Inc.
Applicant Add	650 W. Lake St. Suite#220, Chicago, IL, 60661, USA
Manufacturer	Hale Devices, Inc.
Manufacturer Add	650 W. Lake St. Suite#220, Chicago, IL, 60661, USA

### 3. Test site information

Test Lab A:

Lab performing tests	SIEMIC (Shenzhen-China) LABORATORIES
Lab Address	Zone A, Floor 1, Building 2 Wan Ye Long Technology Park South Side of Zhoushi Road, Bao' an District, Shenzhen, Guangdong China 518108
FCC Test Site No.	535293
IC Test Site No.	4842E-1
Test Software	Radiated Emission Program-To Shenzhen v2.0

Test Lab B:

Lab performing tests	SIEMIC (Nanjing-China) Laboratories
Lab Address	2-1 Longcang Avenue Yuhua Economic and Technology Development Park, Nanjing, China
FCC Test Site No.	694825
IC Test Site No.	4842B-1
Test Software	EZ_EMG(ver.lcp-03A1)

Note: We just perform Radiated Spurious Emission above 18GHz in the test Lab. B.

## 4. Equipment under Test (EUT) Information

Description of EUT:	Bluetooth Headphone
Main Model:	Aiwa Arc-1-US, Arc-1-XX (X=blank, 0~9, A~Z)
Serial Model:	N/A
Date EUT received:	April 28, 2018
Test Date(s):	April 29 to May 10, 2018
Equipment Category :	DTS
Antenna Gain:	Bluetooth/BLE: 0dBi
Antenna Type:	PCB antenna
Type of Modulation:	Bluetooth: GFSK, $\pi$ /4DQPSK, 8DPSK BLE: GFSK
RF Operating Frequency (ies):	Bluetooth& BLE: 2402-2480 MHz
Max. Output Power:	2.17dBm
Number of Channels:	Bluetooth: 79CH BLE: 40CH
Port:	Please refer to the user' s manual
Trade Name :	AIWA
Input Power:	Model: 652035 Spec: 3.7V, 420mAh
FCC ID:	2AERPAIWAARC-1

## 5. Test Summary

The product was tested in accordance with the following specifications.

All testing has been performed according to below product classification:

FCC Rules	Description of Test	Result
§15.203	Antenna Requirement	Compliance
§15.247 (a)(2)	DTS (6 dB) CHANNEL BANDWIDTH	Compliance
§15.247(b)(3)	Conducted Maximum Output Power	Compliance
§15.247(e)	Power Spectral Density	Compliance
§15.247(d)	Band-Edge & Unwanted Emissions into Restricted Frequency Bands	Compliance
§15.207 (a),	AC Power Line Conducted Emissions	Compliance
§15.205, §15.209, §15.247(d)	Radiated Emissions & Unwanted Emissions into Restricted Frequency Bands	Compliance

### Measurement Uncertainty

Emissions		
Test Item	Description	Uncertainty
Band-Edge & Unwanted Emissions into Restricted Frequency Bands and Radiated Emissions & Unwanted Emissions into Restricted Frequency Bands	Confidence level of approximately 95% (in the case where distributions are normal), with a coverage factor of 2 (for EUTs < 0.5m X 0.5m X 0.5m)	+5.6dB/-4.5dB
-	-	-



## 6. Measurements, Examination And Derived Results

### 6.1 Antenna Requirement

#### **Applicable Standard**

According to § 15.203, an intentional radiator shall be designed to ensure that no antenna other than that furnished by the responsible party shall be used with the device. The use of a permanently attached antenna or of an antenna that uses a unique coupling to the intentional radiator shall be considered sufficient to comply with the provisions of this section. The manufacturer may design the unit so that a broken antenna can be replaced by the user, but the user of a standard antenna jack or electrical connector is prohibited. The structure and application of the EUT were analyzed to determine compliance with section §15.203 of the rules. §15.203 state that the subject device must meet the following criteria:

- a. Antenna must be permanently attached to the unit.
- b. Antenna must use a unique type of connector to attach to the EUT.

Unit must be professionally installed, and installer shall be responsible for verifying that the correct antenna is employed with the unit.

And according to FCC 47 CFR section 15.247 (b), if the transmitting antennas of directional gain greater than 6dBi are used, the power shall be reduced by the amount in dB that the directional gain of the antenna exceeds 6 dBi.

#### **Antenna Connector Construction**

The EUT has 1 antenna:

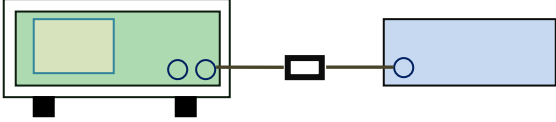
A permanently attached PCB antenna for Bluetooth, the gain is 0dBi for Bluetooth.

**The antenna meets up with the ANTENNA REQUIREMENT.**

**Result:** Compliance.

## 6.2 DTS (6 dB) Channel Bandwidth

Temperature	24°C
Relative Humidity	55%
Atmospheric Pressure	1015mbar
Test date :	May 05, 2018
Tested By :	Aaron Liang

Spec	Item	Requirement	Applicable
§ 15.247(a)(2)	a)	6dB BW ≥ 500kHz;	<input checked="" type="checkbox"/>
RSS Gen(4.6.1)	b)	99% BW: For FCC reference only; required by IC.	<input checked="" type="checkbox"/>
Test Setup	 <p style="text-align: center;">Spectrum Analyzer                      EUT</p>		
Test Procedure	<p>558074 D01 DTS MEAS Guidance v03r03, 8.1 DTS bandwidth <u>6dB Emission bandwidth measurement procedure</u></p> <ul style="list-style-type: none"> <li>- Set RBW = 100 kHz.</li> <li>- Set the video bandwidth (VBW) ≥ 3 RBW.</li> <li>- Detector = Peak.</li> <li>- Trace mode = max hold.</li> <li>- Sweep = auto couple.</li> <li>- Allow the trace to stabilize.</li> </ul> <p>Measure the maximum width of the emission that is constrained by the frequencies associated with the two outermost amplitude points (upper and lower frequencies) that are attenuated by 6 dB relative to the maximum level measured in the fundamental emission.</p>		
Remark			
Result	<input checked="" type="checkbox"/> Pass <input type="checkbox"/> Fail		

Test Data     Yes                       N/A

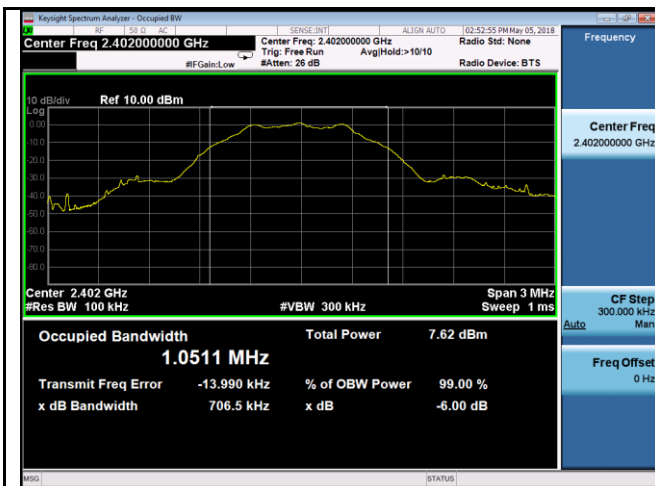
Test Plot     Yes (See below)                       N/A

## 6dB Bandwidth measurement result

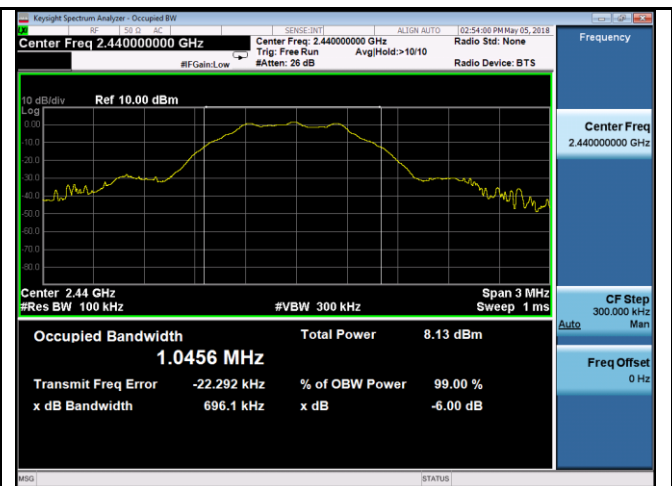
### Test Data

CH	Frequency (MHz)	6dB Bandwidth (kHz)	99% Occupied Bandwidth (MHz)
Low	2402	0.71	1.0511
Mid	2440	0.70	1.0456
High	2480	0.69	1.0472

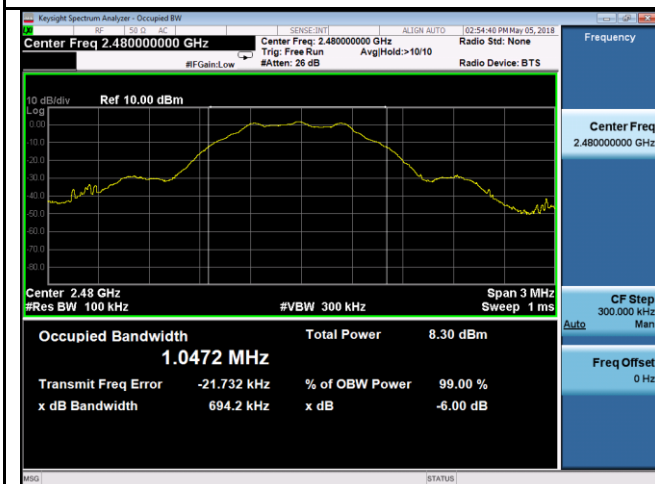
### Test Plots



6dB Bandwidth - Low CH 2402



6dB Bandwidth - Mid CH 2440



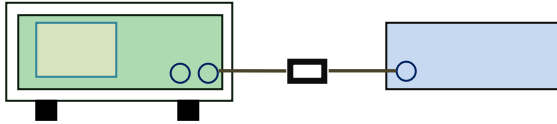
6dB Bandwidth - High CH 2480

### 6.3 Maximum Output Power

Temperature	24°C
Relative Humidity	55%
Atmospheric Pressure	1015mbar
Test date :	May 05, 2018
Tested By :	Aaron Liang

#### Requirement(s):

Spec	Item	Requirement	Applicable
§15.247(b) (3),RSS210 (A8.4)	a)	FHSS in 2400-2483.5MHz with $\geq 75$ channels: $\leq 1$ Watt	<input type="checkbox"/>
	b)	FHSS in 5725-5850MHz: $\leq 1$ Watt	<input type="checkbox"/>
	c)	For all other FHSS in the 2400-2483.5MHz band: $\leq 0.125$ Watt.	<input type="checkbox"/>
	d)	FHSS in 902-928MHz with $\geq 50$ channels: $\leq 1$ Watt	<input type="checkbox"/>
	e)	FHSS in 902-928MHz with $\geq 25$ & $<50$ channels: $\leq 0.25$ Watt	<input type="checkbox"/>
	f)	DTS in 902-928MHz, 2400-2483.5MHz: $\leq 1$ Watt	<input checked="" type="checkbox"/>

Test Setup	 <p style="text-align: center;">Spectrum Analyzer                      EUT</p>
------------	--

Test Procedure	<p>558074 D01 DTS MEAS Guidance v03r03, 9.1.2 Integrated band power method Maximum output power measurement procedure</p> <ol style="list-style-type: none"> <li>Set the RBW <math>\geq</math> DTS bandwidth.</li> <li>Set VBW <math>\geq 3 \times</math> RBW.</li> <li>Set span <math>\geq 3 \times</math> RBW</li> <li>Sweep time = auto couple.</li> <li>Detector = peak.</li> <li>Trace mode = max hold.</li> <li>Allow trace to fully stabilize.</li> <li>Use peak marker function to determine the peak amplitude level.</li> </ol>
----------------	---

Remark	
Result	<input checked="" type="checkbox"/> Pass <input type="checkbox"/> Fail

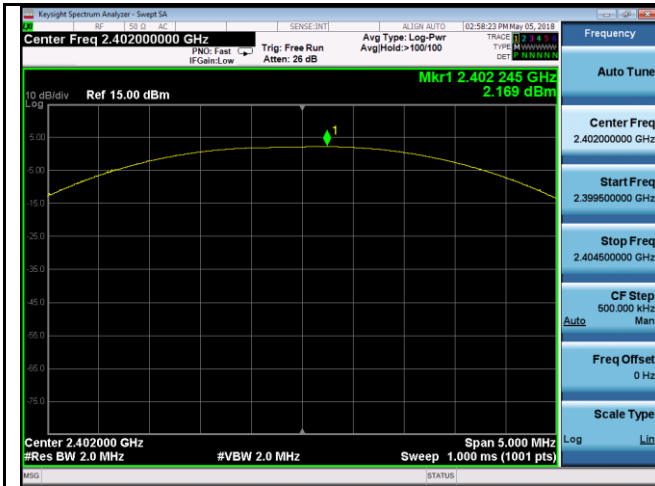
Test Data  Yes  N/A  
 Test Plot  Yes (See below)  N/A

### Output Power measurement result

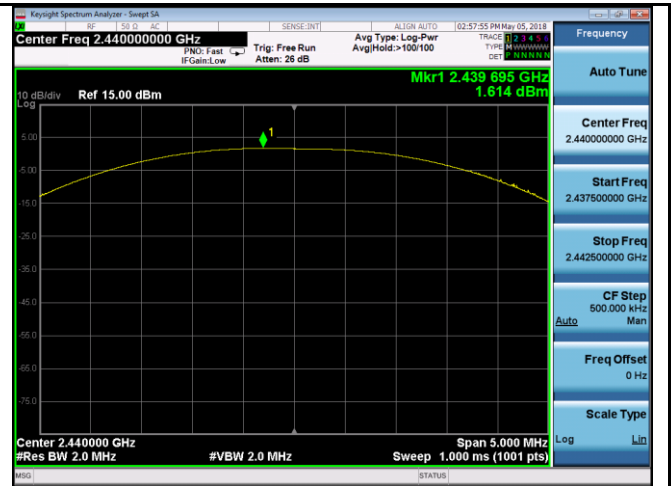
#### Test Data

Type	CH	Frequency (MHz)	Conducted Power (dBm)	Limit (dBm)	Result
Output power	Low	2402	2.17	30	Pass
	Mid	2440	1.61	30	Pass
	High	2480	1.82	30	Pass

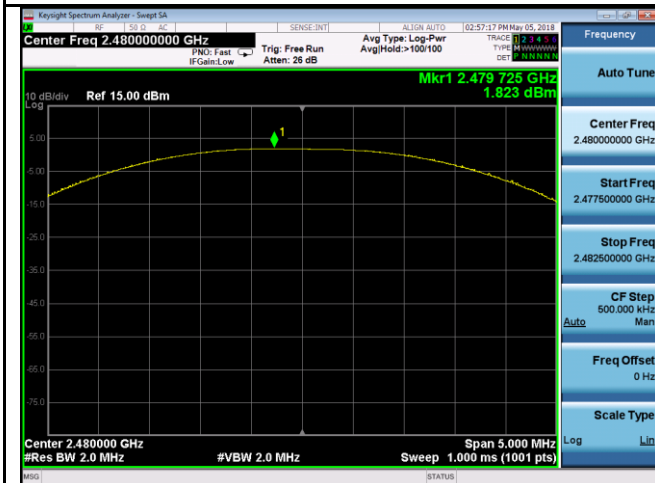
#### Test Plots



PK Output power - Low CH 2402



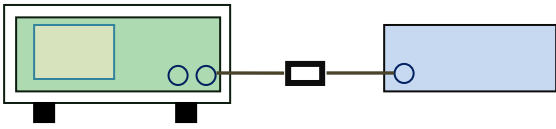
PK Output power - Mid CH 2440



PK Output power - High CH 2480

## 6.4 Power Spectral Density

Temperature	24°C
Relative Humidity	55%
Atmospheric Pressure	1015mbar
Test date :	May 05, 2018
Tested By :	Aaron Liang

Spec	Item	Requirement	Applicable
§15.247(e)	a)	The power spectral density conducted from the intentional radiator to the antenna shall not be greater than 8 dBm in any 3 kHz band during any time interval of continuous transmission.	<input checked="" type="checkbox"/>
Test Setup	 <p style="text-align: center;">Spectrum Analyzer                      EUT</p>		
Test Procedure	<p>558074 D01 DTS MEAS Guidance v03r03, 10.2 power spectral density method power spectral density measurement procedure</p> <ul style="list-style-type: none"> <li>- a) Set analyzer center frequency to DTS channel center frequency.</li> <li>- b) Set the span to 1.5 times the DTS bandwidth.</li> <li>- c) Set the RBW to: <math>3 \text{ kHz} \leq \text{RBW} \leq 100 \text{ kHz}</math>.</li> <li>- d) Set the VBW <math>\geq 3 \times \text{RBW}</math>.</li> <li>- e) Detector = peak.</li> <li>- f) Sweep time = auto couple.</li> <li>- g) Trace mode = max hold.</li> <li>- h) Allow trace to fully stabilize.</li> <li>- i) Use the peak marker function to determine the maximum amplitude level within the RBW.</li> <li>- j) If measured value exceeds limit, reduce RBW (no less than 3 kHz) and repeat.</li> </ul>		
Remark			
Result	<input checked="" type="checkbox"/> Pass <input type="checkbox"/> Fail		

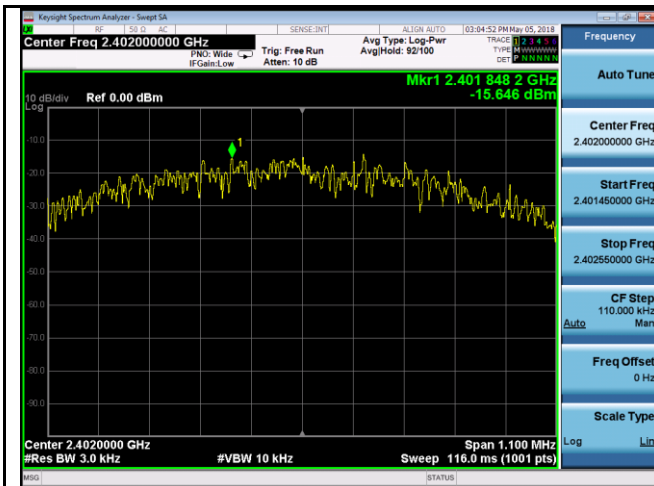
Test Data     Yes                       N/A  
 Test Plot     Yes (See below)                       N/A

### Power Spectral Density measurement result

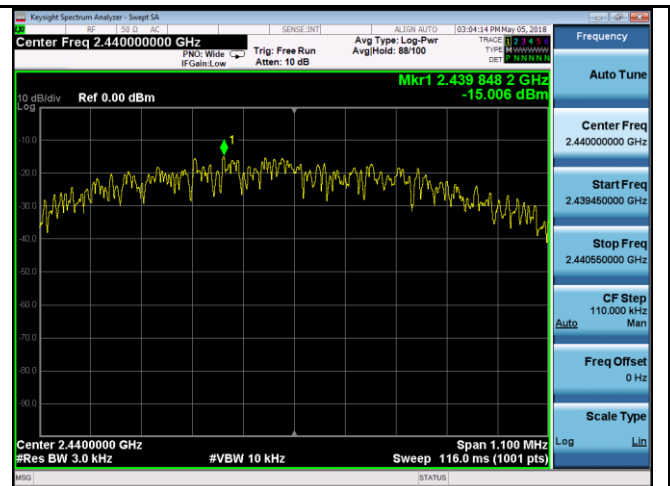
#### Test Data

Type	CH	Freq (MHz)	PSD (dBm)	Limit (dBm)	Result
PSD	Low	2402	-15.646	8	Pass
	Mid	2440	-15.006	8	Pass
	High	2480	-14.548	8	Pass

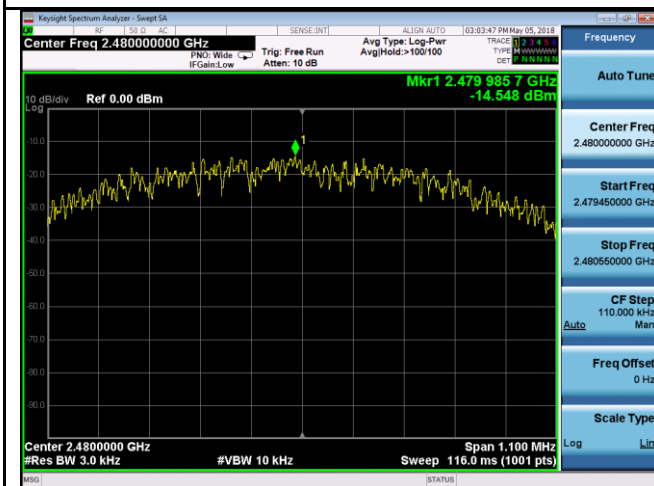
#### Test Plots



PSD - Low CH 2402



PSD - Mid CH 2440



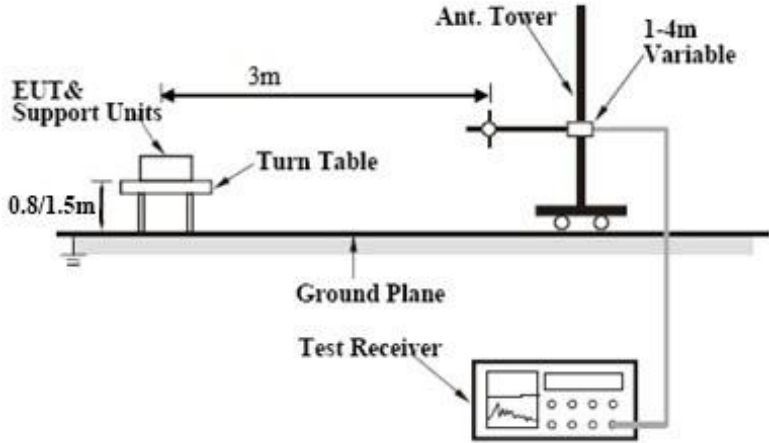
PSD - High CH 2480

## 6.5 Band-Edge & Unwanted Emissions into Restricted Frequency Bands

Temperature	24°C
Relative Humidity	55%
Atmospheric Pressure	1015mbar
Test date :	May 05, 2018
Tested By :	Aaron Liang

### Requirement(s):

Spec	Item	Requirement	Applicable
§15.247(d)	a)	In any 100 kHz bandwidth outside the frequency band in which the spread spectrum or digitally modulated intentional radiator is operating, the radio frequency power that is produced by the intentional radiator shall be at least 20 dB below that in the 100 kHz bandwidth within the band that contains the highest level of the desired power, based on either an RF conducted or a radiated measurement, provided the transmitter demonstrates compliance with the peak conducted power limits.	<input checked="" type="checkbox"/>

Test Setup	
------------	--

Test Procedure	<p>Radiated Method Only</p> <ul style="list-style-type: none"> <li>- 1. Check the calibration of the measuring instrument using either an internal calibrator or a known signal from an external generator.</li> <li>- 2. Position the EUT without connection to measurement instrument. Put it on the Rotated table and turn on the EUT and make it operate in transmitting mode. Then set it to Low Channel and High Channel within its operating range, and make sure the instrument is operated in its linear range.</li> </ul>
----------------	---



Test Report No.	18070475-FCC-R2
Page	17 of 46

	<ul style="list-style-type: none"> <li>- 3. First, set both RBW and VBW of spectrum analyzer to 100 kHz with a convenient frequency span including 100kHz bandwidth from band edge, check the emission of EUT, if pass then set Spectrum Analyzer as below:               <ul style="list-style-type: none"> <li>a. The resolution bandwidth and video bandwidth of test receiver/spectrum analyzer is 120 kHz for Quasiy Peak detection at frequency below 1GHz.</li> <li>b. The resolution bandwidth of test receiver/spectrum analyzer is 1MHz and video bandwidth is 3MHz with Peak detection for Peak measurement at frequency above 1GHz.</li> <li>c. The resolution bandwidth of test receiver/spectrum analyzer is 1MHz and the video bandwidth is 10Hz with Peak detection for Average Measurement as below at frequency above 1GHz.</li> </ul> </li> <li>- 4. Measure the highest amplitude appearing on spectral display and set it as a reference level. Plot the graph with marking the highest point and edge frequency.</li> <li>- 5. Repeat above procedures until all measured frequencies were complete.</li> </ul>
Remark	
Result	<input checked="" type="checkbox"/> Pass <input type="checkbox"/> Fail

Test Data     Yes                       N/A

Test Plot     Yes (See below)             N/A

## Test Plots

### Band Edge measurement result



Band Edge, Left Side (Peak)

Note: F1 is frequency 2390MHz; F2 is frequency 2400MHz

Band Edge, Right Side (Peak)

Note: F1 is frequency 2483.5MHz

Note: (no need if PK value less than the AV limit)

Note: (no need if PK value less than the AV limit)

Band Edge, Left Side-AV

Band Edge, Right Side-AV

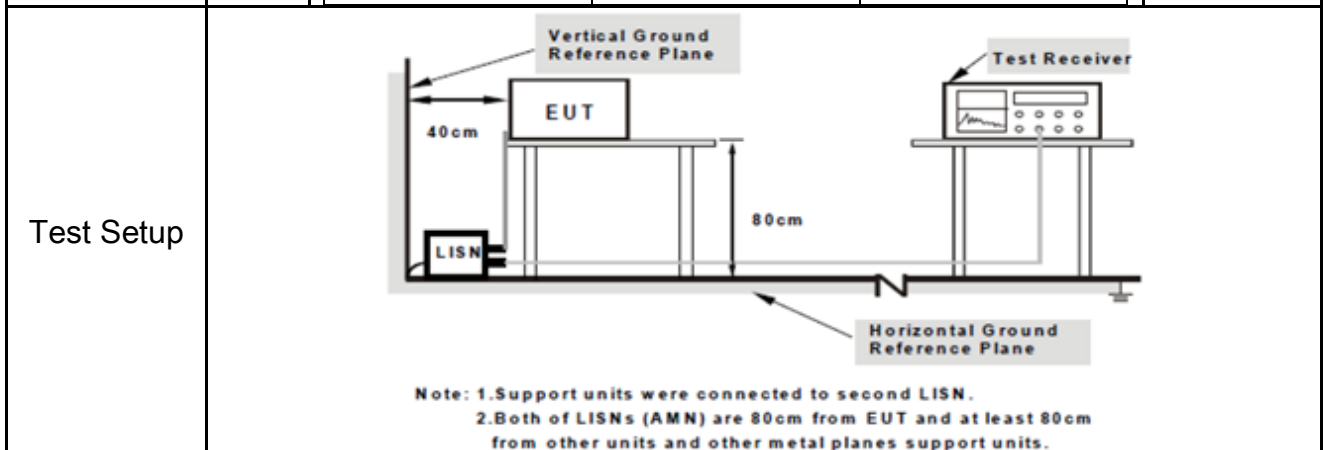
Note: Both Horizontal and vertical polarities were investigated.

## 6.6 AC Power Line Conducted Emissions

Temperature	25°C
Relative Humidity	50%
Atmospheric Pressure	1008mbar
Test date :	May 08, 2018
Tested By :	Aaron Liang

### Requirement(s):

Spec	Item	Requirement	Applicable														
47CFR§15.207, RSS210 (A8.1)	a)	For Low-power radio-frequency devices that is designed to be connected to the public utility (AC) power line, the radio frequency voltage that is conducted back onto the AC power line on any frequency or frequencies, within the band 150 kHz to 30 MHz, shall not exceed the limits in the following table, as measured using a 50 [mu] H/50 ohms line impedance stabilization network (LISN). The lower limit applies at the boundary between the frequencies ranges.	<input checked="" type="checkbox"/>														
		<table border="1"> <thead> <tr> <th rowspan="2">Frequency ranges (MHz)</th> <th colspan="2">Limit (dBµV)</th> </tr> <tr> <th>QP</th> <th>Average</th> </tr> </thead> <tbody> <tr> <td>0.15 ~ 0.5</td> <td>66 – 56</td> <td>56 – 46</td> </tr> <tr> <td>0.5 ~ 5</td> <td>56</td> <td>46</td> </tr> <tr> <td>5 ~ 30</td> <td>60</td> <td>50</td> </tr> </tbody> </table>		Frequency ranges (MHz)	Limit (dBµV)		QP	Average	0.15 ~ 0.5	66 – 56	56 – 46	0.5 ~ 5	56	46	5 ~ 30	60	50
		Frequency ranges (MHz)			Limit (dBµV)												
				QP	Average												
0.15 ~ 0.5	66 – 56	56 – 46															
0.5 ~ 5	56	46															
5 ~ 30	60	50															



Procedure	<ol style="list-style-type: none"> <li>The EUT and supporting equipment were set up in accordance with the requirements of the standard on top of a 1.5m x 1m x 0.8m high, non-metallic table.</li> <li>The power supply for the EUT was fed through a 50W/50mH EUT LISN, connected to filtered mains.</li> <li>The RF OUT of the EUT LISN was connected to the EMI test receiver via a low-loss</li> </ol>
-----------	---

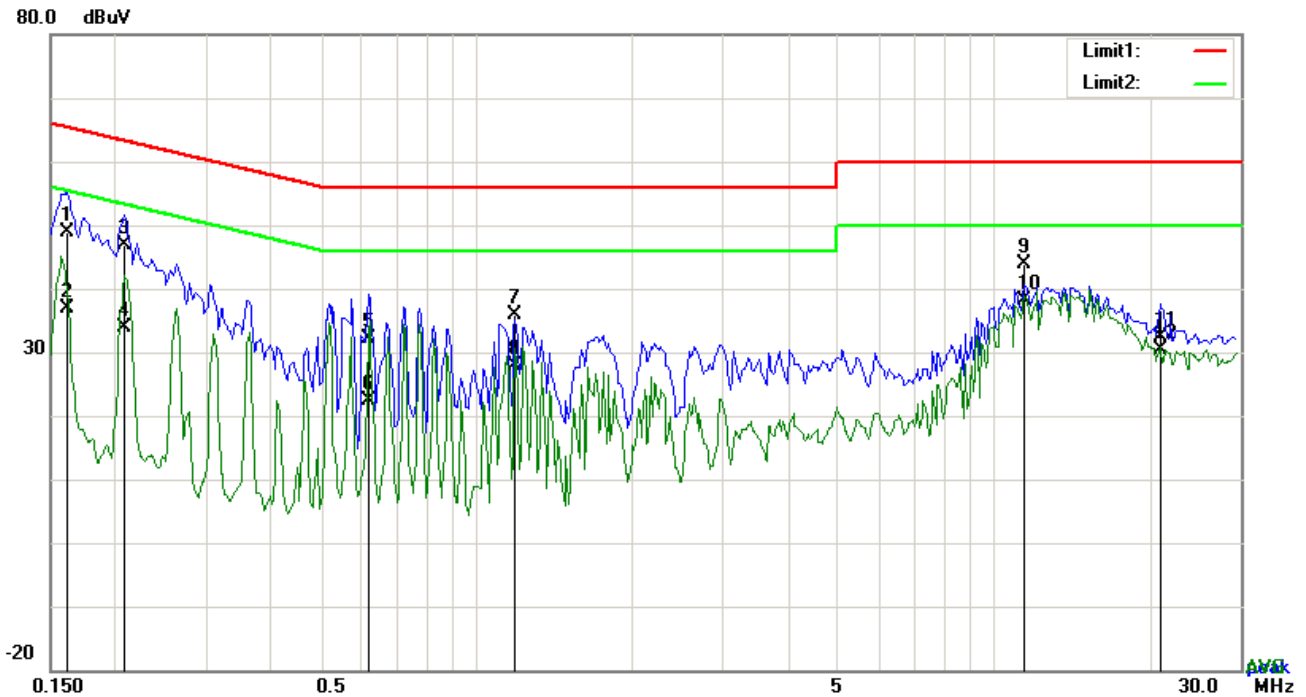
Test Report No.	18070475-FCC-R2
Page	20 of 46

	<p>coaxial cable.</p> <ol style="list-style-type: none"> <li>4. All other supporting equipment were powered separately from another main supply.</li> <li>5. The EUT was switched on and allowed to warm up to its normal operating condition.</li> <li>6. A scan was made on the NEUTRAL line (for AC mains) or Earth line (for DC power) over the required frequency range using an EMI test receiver.</li> <li>7. High peaks, relative to the limit line, The EMI test receiver was then tuned to the selected frequencies and the necessary measurements made with a receiver bandwidth setting of 10 kHz.</li> <li>8. Step 7 was then repeated for the LIVE line (for AC mains) or DC line (for DC power).</li> </ol>
Remark	
Result	<input checked="" type="checkbox"/> Pass <input type="checkbox"/> Fail

Test Data     Yes                       N/A

Test Plot     Yes (See below)             N/A

<b>Test Mode:</b>	<b>Transmitting Mode</b>
-------------------	--------------------------

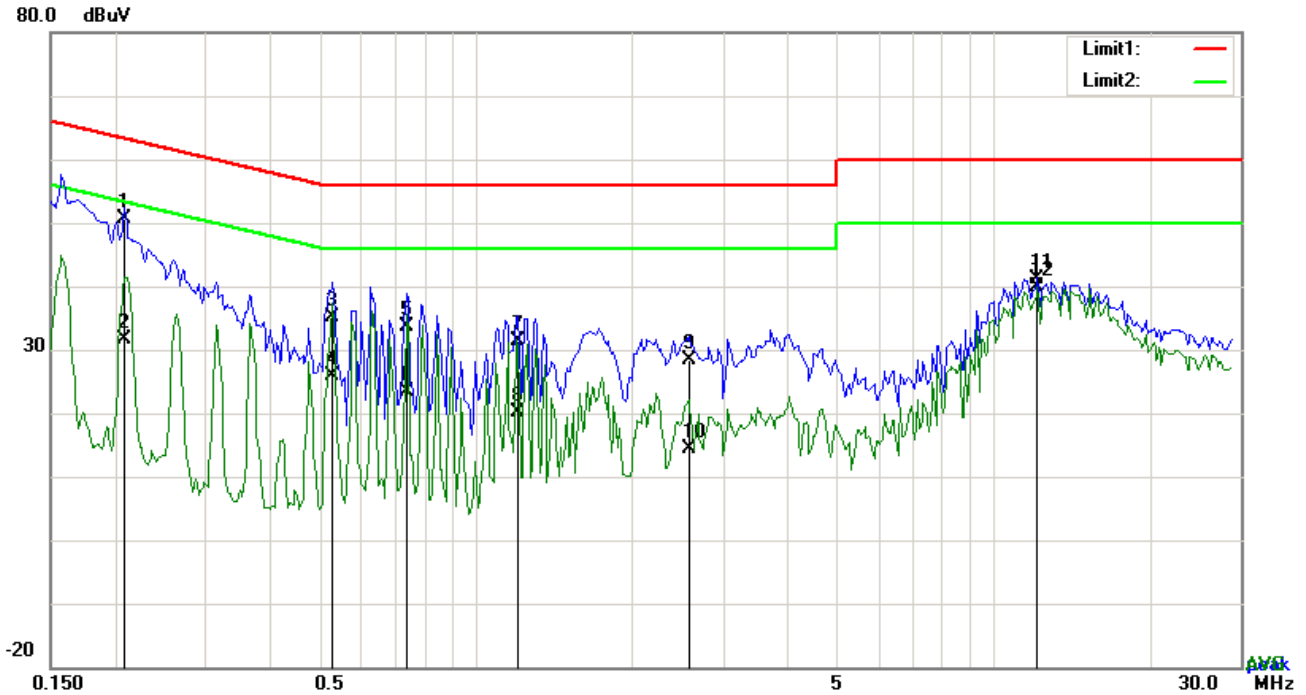


**Test Data**

**Phase Line Plot at 120Vac, 60Hz**

No.	P/L	Frequency (MHz)	Reading (dBµV)	Detector	Corrected (dB)	Result (dBµV)	Limit (dBµV)	Margin (dB)
1	L1	0.1617	38.86	QP	10.03	48.89	65.38	-16.49
2	L1	0.1617	26.90	AVG	10.03	36.93	55.38	-18.45
3	L1	0.2085	36.79	QP	10.03	46.82	63.26	-16.44
4	L1	0.2085	23.83	AVG	10.03	33.86	53.26	-19.40
5	L1	0.6180	22.08	QP	10.03	32.11	56.00	-23.89
6	L1	0.6180	12.38	AVG	10.03	22.41	46.00	-23.59
7	L1	1.1874	25.90	QP	10.03	35.93	56.00	-20.07
8	L1	1.1874	17.73	AVG	10.03	27.76	46.00	-18.24
9	L1	11.4669	33.82	QP	10.17	43.99	60.00	-16.01
10	L1	11.4669	27.93	AVG	10.17	38.10	50.00	-11.90
11	L1	20.9400	21.98	QP	10.32	32.30	60.00	-27.70
12	L1	20.9400	20.18	AVG	10.32	30.50	50.00	-19.50

<b>Test Mode:</b>	<b>Transmitting Mode</b>
-------------------	--------------------------

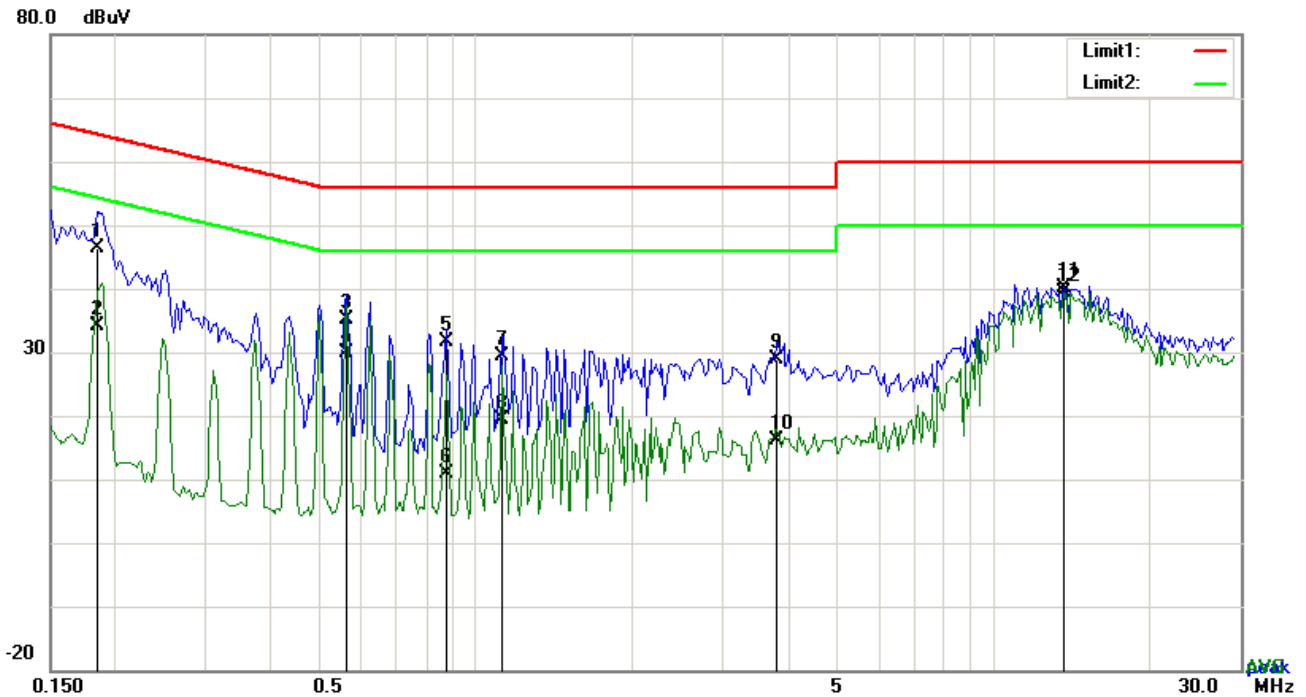


**Test Data**

**Phase Neutral Plot at 120Vac, 60Hz**

No.	P/L	Frequency (MHz)	Reading (dBµV)	Detector	Corrected (dB)	Result (dBµV)	Limit (dBµV)	Margin (dB)
1	N	0.2085	40.56	QP	10.03	50.59	63.26	-12.67
2	N	0.2085	21.58	AVG	10.03	31.61	53.26	-21.65
3	N	0.5283	25.11	QP	10.03	35.14	56.00	-20.86
4	N	0.5283	15.83	AVG	10.03	25.86	46.00	-20.14
5	N	0.7350	23.53	QP	10.03	33.56	56.00	-22.44
6	N	0.7350	13.39	AVG	10.03	23.42	46.00	-22.58
7	N	1.2030	21.28	QP	10.03	31.31	56.00	-24.69
8	N	1.2030	10.16	AVG	10.03	20.19	46.00	-25.81
9	N	2.5797	18.40	QP	10.05	28.45	56.00	-27.55
10	N	2.5797	4.24	AVG	10.05	14.29	46.00	-31.71
11	N	12.1572	30.89	QP	10.18	41.07	60.00	-18.93
12	N	12.1572	29.71	AVG	10.18	39.89	50.00	-10.11

<b>Test Mode:</b>	<b>Transmitting Mode</b>
-------------------	--------------------------

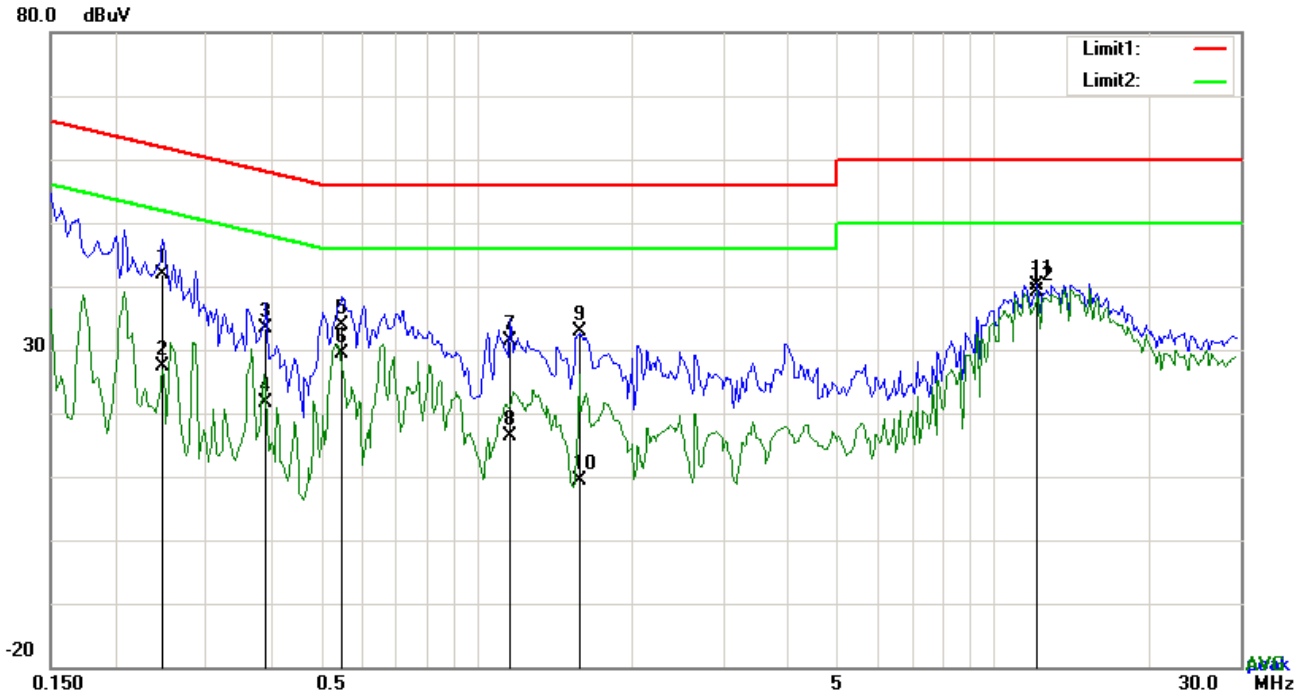


**Test Data**

**Phase Line Plot at 240Vac, 60Hz**

No.	P/L	Frequency (MHz)	Reading (dBμV)	Detector	Corrected (dB)	Result (dBμV)	Limit (dBμV)	Margin (dB)
1	L1	0.1851	36.36	QP	10.02	46.38	64.25	-17.87
2	L1	0.1851	24.19	AVG	10.02	34.21	54.25	-20.04
3	L1	0.5595	25.11	QP	10.02	35.13	56.00	-20.87
4	L1	0.5595	19.78	AVG	10.02	29.80	46.00	-16.20
5	L1	0.8754	21.71	QP	10.03	31.74	56.00	-24.26
6	L1	0.8754	0.78	AVG	10.03	10.81	46.00	-35.19
7	L1	1.1211	19.29	QP	10.03	29.32	56.00	-26.68
8	L1	1.1211	9.26	AVG	10.03	19.29	46.00	-26.71
9	L1	3.7995	18.90	QP	10.06	28.96	56.00	-27.04
10	L1	3.7995	6.08	AVG	10.06	16.14	46.00	-29.86
11	L1	13.6392	29.99	QP	10.18	40.17	60.00	-19.83
12	L1	13.6392	29.28	AVG	10.18	39.46	50.00	-10.54

<b>Test Mode:</b>	<b>Transmitting Mode</b>
-------------------	--------------------------



**Test Data**

**Phase Neutral Plot at 240Vac, 60Hz**

No.	P/L	Frequency (MHz)	Reading (dBμV)	Detector	Corrected (dB)	Result (dBμV)	Limit (dBμV)	Margin (dB)
1	N	0.2475	31.89	QP	10.03	41.92	61.84	-19.92
2	N	0.2475	17.32	AVG	10.03	27.35	51.84	-24.49
3	N	0.3918	23.42	QP	10.03	33.45	58.03	-24.58
4	N	0.3918	11.54	AVG	10.03	21.57	48.03	-26.46
5	N	0.5517	23.81	QP	10.03	33.84	56.00	-22.16
6	N	0.5517	19.30	AVG	10.03	29.33	46.00	-16.67
7	N	1.1601	21.44	QP	10.03	31.47	56.00	-24.53
8	N	1.1601	6.28	AVG	10.03	16.31	46.00	-29.69
9	N	1.5774	22.88	QP	10.04	32.92	56.00	-23.08
10	N	1.5774	-0.63	AVG	10.04	9.41	46.00	-36.59
11	N	12.1572	30.00	QP	10.18	40.18	60.00	-19.82
12	N	12.1572	28.90	AVG	10.18	39.08	50.00	-10.92

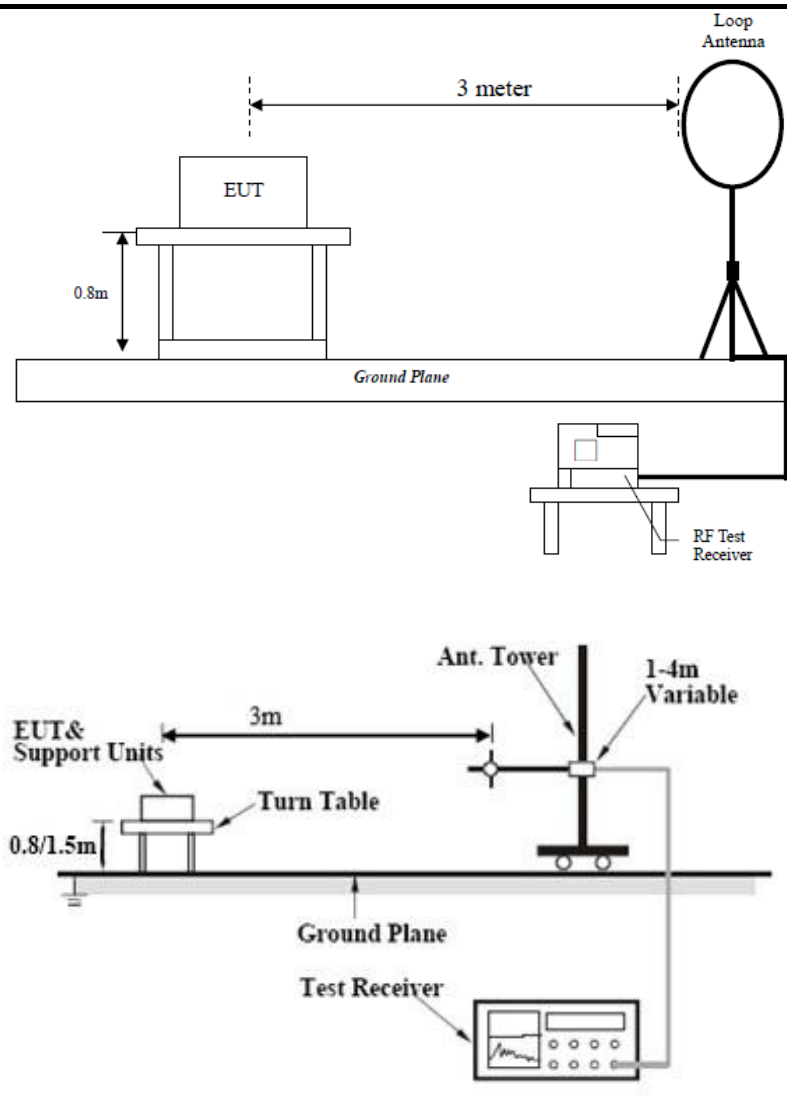


## 6.7 Radiated Emissions & Restricted Band

Temperature	25°C
Relative Humidity	50%
Atmospheric Pressure	1008mbar
Test date :	May 08, 2018
Tested By :	Aaron Liang

### Requirement(s):

Spec	Item	Requirement	Applicable																
47CFR§15.247(d), RSS210 (A8.5)	a)	<p>Except higher limit as specified elsewhere in other section, the emissions from the low-power radio-frequency devices shall not exceed the field strength levels specified in the following table and the level of any unwanted emissions shall not exceed the level of the fundamental emission. The tighter limit applies at the band edges</p> <table border="1"> <thead> <tr> <th>Frequency range (MHz)</th> <th>Field Strength (µV/m)</th> </tr> </thead> <tbody> <tr> <td>0.009~0.490</td> <td>2400/F(KHz)</td> </tr> <tr> <td>0.490~1.705</td> <td>24000/F(KHz)</td> </tr> <tr> <td>1.705~30.0</td> <td>30</td> </tr> <tr> <td>30 – 88</td> <td>100</td> </tr> <tr> <td>88 – 216</td> <td>150</td> </tr> <tr> <td>216 960</td> <td>200</td> </tr> <tr> <td>Above 960</td> <td>500</td> </tr> </tbody> </table>	Frequency range (MHz)	Field Strength (µV/m)	0.009~0.490	2400/F(KHz)	0.490~1.705	24000/F(KHz)	1.705~30.0	30	30 – 88	100	88 – 216	150	216 960	200	Above 960	500	<input checked="" type="checkbox"/>
	Frequency range (MHz)	Field Strength (µV/m)																	
	0.009~0.490	2400/F(KHz)																	
0.490~1.705	24000/F(KHz)																		
1.705~30.0	30																		
30 – 88	100																		
88 – 216	150																		
216 960	200																		
Above 960	500																		
b)	<p>For non-restricted band, In any 100 kHz bandwidth outside the frequency band in which the spread spectrum or digitally modulated intentional radiator is operating, the radio frequency power that is produced by the intentional radiator shall be at least 20 dB or 30dB below that in the 100 kHz bandwidth within the band that contains the highest level of the desired power, determined by the measurement method on output power to be used. Attenuation below the general limits specified in § 15.209(a) is not required</p> <p><input checked="" type="checkbox"/> 20 dB down      <input type="checkbox"/> 30 dB down</p>	<input checked="" type="checkbox"/>																	
c)	<p>or restricted band, emission must also comply with the radiated emission limits specified in 15.209</p>	<input checked="" type="checkbox"/>																	

<p>Test Setup</p>	
<p>Procedure</p>	<ol style="list-style-type: none"> <li>1. The EUT was switched on and allowed to warm up to its normal operating condition.</li> <li>2. The test was carried out at the selected frequency points obtained from the EUT characterization. Maximization of the emissions, was carried out by rotating the EUT, changing the antenna polarization, and adjusting the antenna height in the following manner:             <ol style="list-style-type: none"> <li>a. Vertical or horizontal polarization (whichever gave the higher emission level over a full rotation of the EUT) was chosen.</li> <li>b. The EUT was then rotated to the direction that gave the maximum emission.</li> <li>c. Finally, the antenna height was adjusted to the height that gave the maximum emission.</li> </ol> </li> <li>3. The resolution bandwidth and video bandwidth of test receiver/spectrum analyzer is 120 kHz for Quasiy Peak detection at frequency below 1GHz.</li> <li>4. The resolution bandwidth of test receiver/spectrum analyzer is 1MHz and video bandwidth is 3MHz with Peak detection for Peak measurement at frequency above 1GHz.</li> </ol>

	<p>The resolution bandwidth of test receiver/spectrum analyzer is 1MHz and the video bandwidth is 10Hz with Peak detection for Average Measurement as below at frequency above 1GHz.</p> <p>5. Steps 2 and 3 were repeated for the next frequency point, until all selected frequency points were measured.</p>
Remark	
Result	<input checked="" type="checkbox"/> Pass <input type="checkbox"/> Fail

Test Data     Yes       N/A  
 Test Plot     Yes (See below)     N/A

**Test Result:**

Test Mode:	Transmitting Mode
------------	-------------------

Frequency range: 9KHz - 30MHz

Freq. (MHz)	Detection value	Factor (dB/m)	Reading (dBuV/m)	Result (dBuV/m)	Limit@3m (dBuV/m)	Margin (dB)
--	--	--	--	--	--	>20
--	--	--	--	--	--	>20

Note:

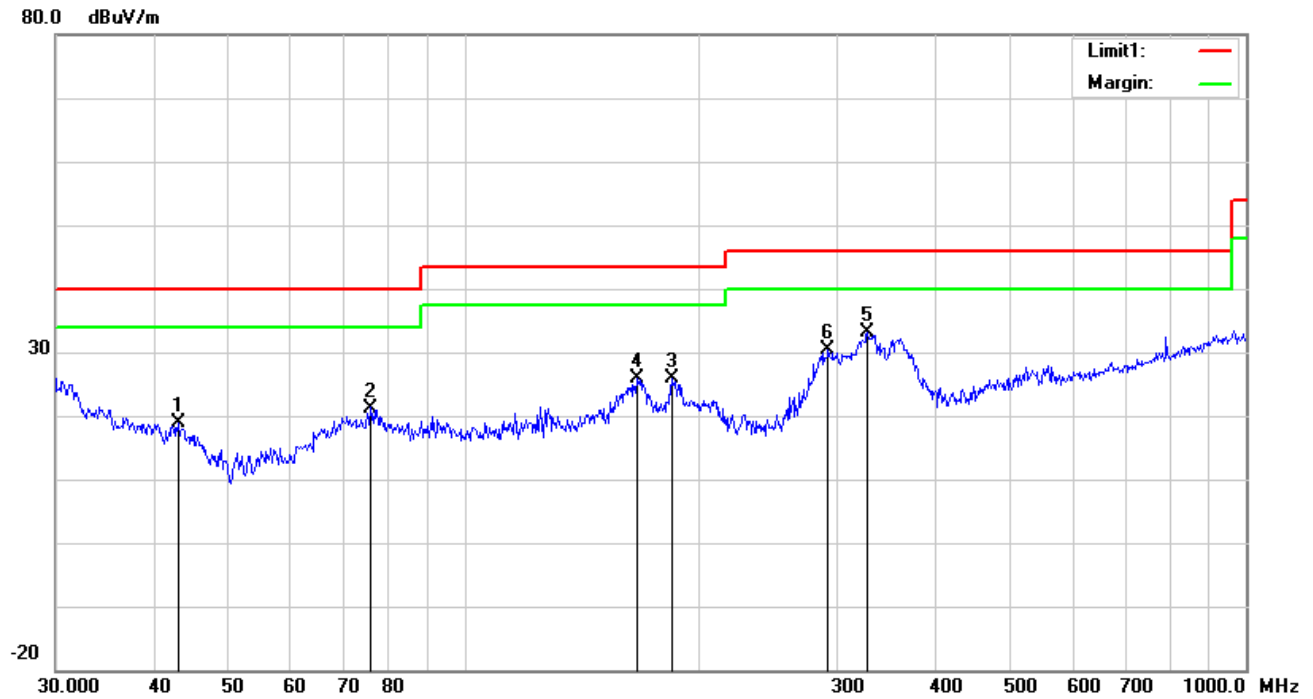
The amplitude of spurious emissions which are attenuated by more than 20dB below the permissible value has no need to be reported.

Distance extrapolation factor = 40 log (specific distance/test distance)(dB);

Limit line = specific limits(dBuv) + distance extrapolation factor.

<b>Test Mode:</b>	<b>Transmitting Mode</b>
-------------------	--------------------------

**30MHz -1GHz**

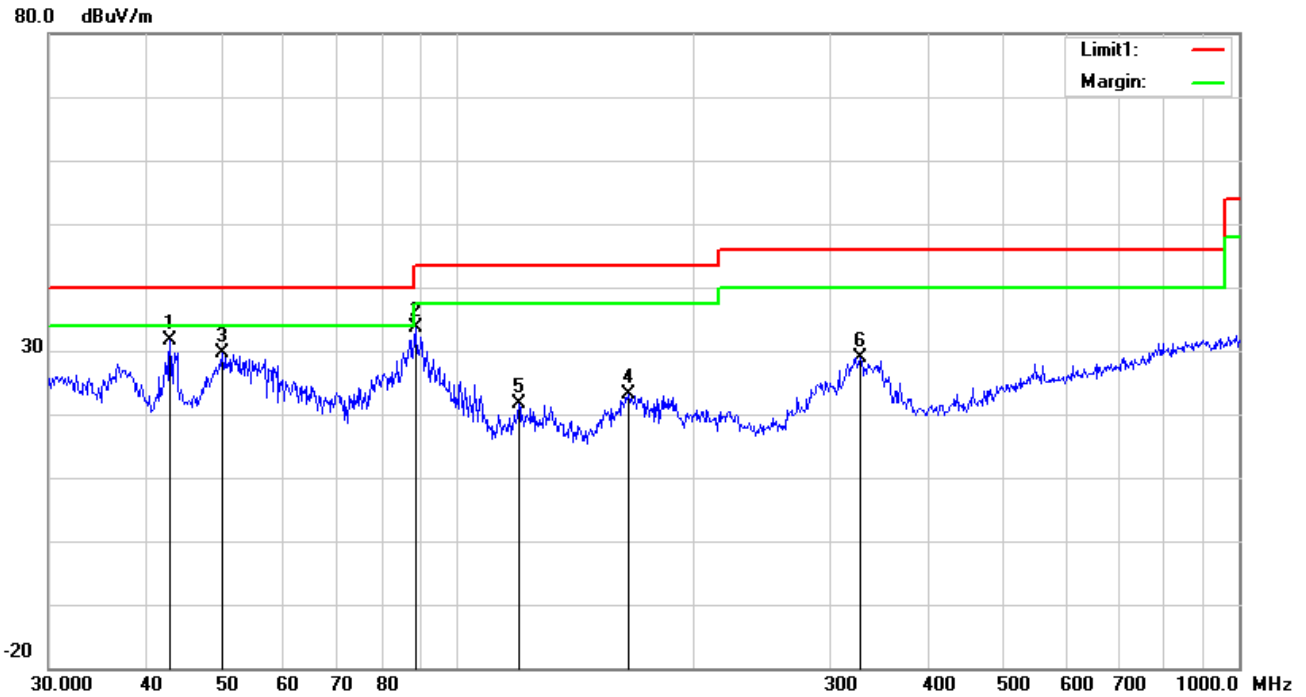


*Test Data*

**Vertical Polarity Plot @3m**

No.	P/L	Frequency (MHz)	Reading (dBuV/m)	Detect or	Ant_F (dB/m)	PA_G (dB)	Cab_L (dB)	Result (dBuV/m)	Limit (dBuV/m)	Margin (dB)	Height (cm)	Degr ee ( )
1	H	43.0505	28.45	peak	11.89	22.29	0.77	18.82	40.00	-21.18	100	231
2	H	75.9773	34.99	peak	7.68	22.40	0.98	21.25	40.00	-18.75	100	292
3	H	184.4898	35.51	peak	11.25	22.28	1.44	25.92	43.50	-17.58	200	187
4	H	166.0680	34.66	peak	12.11	22.26	1.37	25.88	43.50	-17.62	100	239
5	H	327.8873	39.28	peak	14.19	22.21	1.93	33.19	46.00	-12.81	100	345
6	H	292.0583	37.61	peak	13.25	22.29	1.78	30.35	46.00	-15.65	100	36

### 30MHz -1GHz



### Test Data

### Horizontal Polarity Plot @3m

N o.	P/L	Frequency (MHz)	Reading (dBuV/m)	Detect or	Ant_F (dB/m)	PA_G (dB)	Cab_L (dB)	Result (dBuV/m)	Limit (dBuV/m)	Margin (dB)	Height (cm)	Degr ee ( )
1	V	42.8998	41.14	peak	11.99	22.29	0.77	31.61	40.00	-8.39	100	40
2	V	88.3421	47.02	peak	7.93	22.34	0.99	33.60	43.50	-9.90	100	120
3	V	50.0566	42.91	peak	8.39	22.38	0.80	29.72	40.00	-10.28	100	79
4	V	165.4867	31.81	peak	12.16	22.26	1.37	23.08	43.50	-20.42	100	346
5	V	119.8556	29.05	peak	13.87	22.36	1.16	21.72	43.50	-21.78	100	237
6	V	327.8873	35.02	peak	14.19	22.21	1.93	28.93	46.00	-17.07	100	213

### Above 1GHz

<b>Test Mode:</b>	<b>Transmitting Mode</b>
-------------------	--------------------------

Frequency	Meter Reading	Antenna Factor	Cable loss	Preamp factor	Emission Level	Limits	Margin	Detector	Polarity
(MHz)	(dBμV)	(dB)	(dB)	(dB)	(dBμV/m)	(dBμV/m)	(dB)	(PK/AV)	(H/V)
Low Channel:GFSK Mode-2402MHz									
2390	36.14	28.72	3.36	26.32	41.90	74	-32.10	peak	Vertical
4804	27.52	32.94	3.98	27.49	36.95	54	-17.05	Average	Vertical
4804	36.05	32.94	3.98	27.49	45.48	74	-28.52	peak	Vertical
7206	31.34	25.28	5.51	27.94	34.19	54	-19.81	Average	Vertical
7206	38.78	25.28	5.51	27.94	41.63	74	-32.37	peak	Vertical
2390	36.56	28.72	3.36	26.32	42.32	74	-31.68	peak	Horizontal
4804	28.32	32.94	3.98	27.49	37.75	54	-16.25	Average	Horizontal
4804	39.99	32.94	3.98	27.49	49.42	74	-24.58	peak	Horizontal
7206	30.25	25.28	5.51	27.94	33.10	54	-20.90	Average	Horizontal
7206	41.24	25.28	5.51	27.94	44.09	74	-29.91	peak	Horizontal
Middle Channel:GFSK Mode-2441MHz									
4882	31.27	32.11	4.04	27.53	39.89	54	-14.11	Average	Vertical
4882	38.02	32.11	4.04	27.53	46.64	74	-27.36	peak	Vertical
7323	31.36	24.33	5.58	27.96	33.31	54	-20.69	Average	Vertical
7323	39.58	24.33	5.58	27.96	41.53	74	-32.47	peak	Vertical
4882	29.58	32.11	4.04	27.53	38.20	54	-15.80	Average	Horizontal
4882	40.02	32.11	4.04	27.53	48.64	74	-25.36	peak	Horizontal
7323	34.08	24.33	5.58	27.96	36.03	54	-17.97	Average	Horizontal
7323	34.39	24.33	5.58	27.96	36.34	74	-37.66	peak	Horizontal
High Channel:GFSK Mode-2480MHz									
2483.5	38.25	28.79	3.48	26.34	44.18	74	-29.82	peak	Vertical
4960	29.47	31.32	4.12	27.58	37.33	54	-16.67	Average	Vertical
4960	37.49	31.32	4.12	27.58	45.35	74	-28.65	peak	Vertical
7440	29.85	24.38	5.68	27.99	31.92	54	-22.08	Average	Vertical
7440	39.47	24.38	5.68	27.99	41.54	74	-32.46	peak	Vertical
2483.5	38.55	28.79	3.48	26.34	44.48	74	-29.52	peak	Horizontal
4960	30.42	31.32	4.12	27.58	38.28	54	-15.72	Average	Horizontal
4960	39.85	31.32	4.12	27.58	47.71	74	-26.29	peak	Horizontal
7440	33.33	24.38	5.68	27.99	35.40	54	-18.60	Average	Horizontal
7440	39.57	24.38	5.68	27.99	41.64	74	-32.36	peak	Horizontal

**Note:**

- 1, The testing has been conformed to  $10 \times 2480\text{MHz} = 24,800\text{MHz}$
- 2, All other emissions more than 30 dB below the limit
- 3, X-Axis, Y-Axis and Z-Axis were investigated. The results above show only the worst case.
- 4, The radiated spurious test above 18GHz is subcontracted to SIEMIC (Nanjing-China) Laboratories. and found 30dB below the limit at least.

## Annex A. TEST INSTRUMENT

Instrument	Model	Serial #	Cal Date	Cal Due	In use
<b>AC Line Conducted</b>					
EMI test receiver	ESCS30	8471241027	09/15/2017	09/14/2018	<input checked="" type="checkbox"/>
Line Impedance	LI-125A	191106	09/23/2017	09/22/2018	<input checked="" type="checkbox"/>
Line Impedance	LI-125A	191107	09/23/2017	09/22/2018	<input checked="" type="checkbox"/>
ISN	ISN T800	34373	09/23/2017	09/22/2018	<input type="checkbox"/>
Transient Limiter	LIT-153	531118	08/30/2017	08/29/2018	<input type="checkbox"/>
<b>RF conducted test</b>					
Agilent ESA-E SERIES	E4407B	MY45108319	09/15/2017	09/14/2018	<input checked="" type="checkbox"/>
Power Splitter	1#	1#	08/30/2017	08/29/2018	<input checked="" type="checkbox"/>
DC Power Supply	E3640A	MY40004013	09/15/2017	09/14/2018	<input checked="" type="checkbox"/>
<b>Radiated Emissions</b>					
EMI test receiver	ESL6	100262	09/15/2017	09/14/2018	<input checked="" type="checkbox"/>
Positioning Controller	UC3000	MF780208282	11/17/2017	11/16/2018	<input checked="" type="checkbox"/>
OPT 010 AMPLIFIER (0.1-1300MHz)	8447E	2727A02430	08/30/2017	08/29/2018	<input checked="" type="checkbox"/>
Microwave Preamplifier (1 ~ 26.5GHz)	8449B	3008A02402	03/22/2018	03/21/2019	<input checked="" type="checkbox"/>
Horn Antenna	BBHA9170	3145226D1	09/27/2017	09/26/2018	<input checked="" type="checkbox"/>
Active Antenna (9kHz-30MHz)	AL-130	121031	10/12/2017	10/11/2018	<input checked="" type="checkbox"/>
Bilog Antenna (30MHz~6GHz)	JB6	A110712	09/19/2017	09/18/2018	<input checked="" type="checkbox"/>
Double Ridge Horn Antenna (1 ~18GHz)	AH-118	71283	09/22/2017	09/21/2018	<input checked="" type="checkbox"/>
Universal Radio Communication Tester	CMU200	121393	09/23/2017	09/22/2018	<input checked="" type="checkbox"/>

## Annex B. EUT And Test Setup Photographs

### Annex B.i. Photograph: EUT External Photo

Whole Package View



EUT - Front View





EUT - Rear View



EUT - Bottom View 1



EUT - Bottom View 2



EUT – Top View

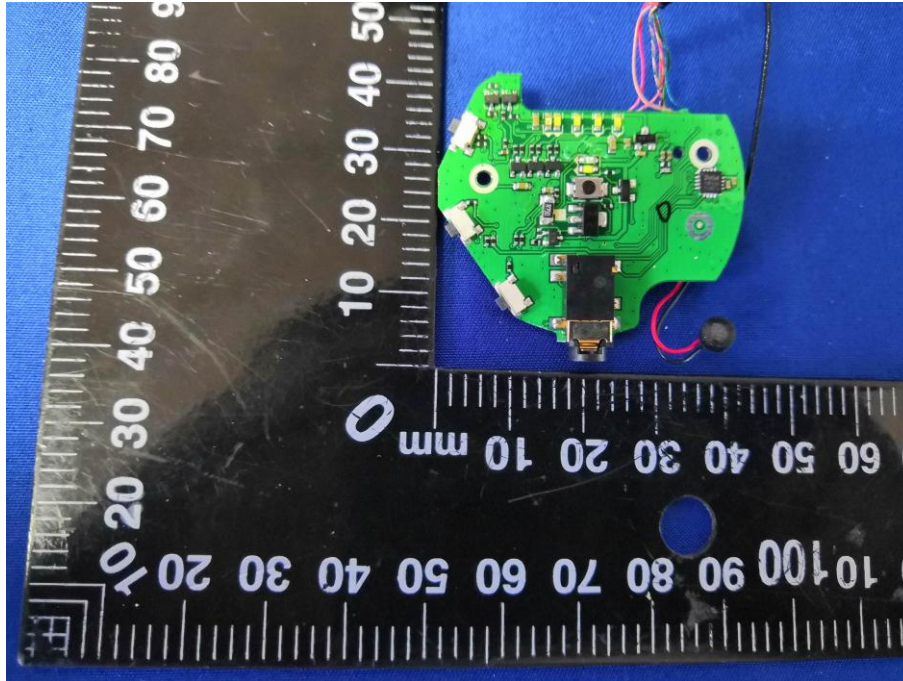


EUT - Right View

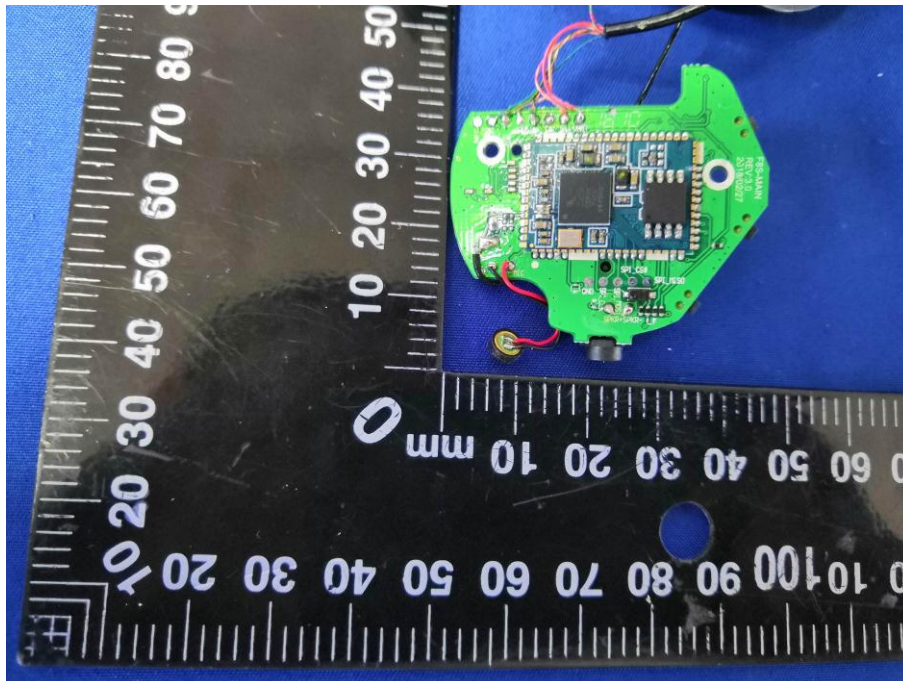


**Annex B.ii. Photograph: EUT Internal Photo**

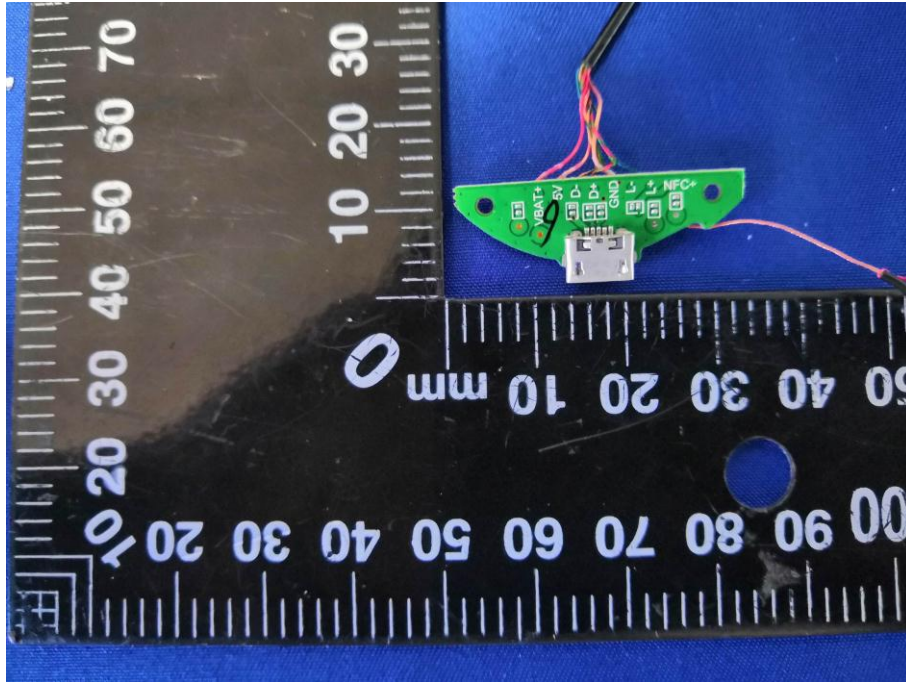
Mainboard - Front View



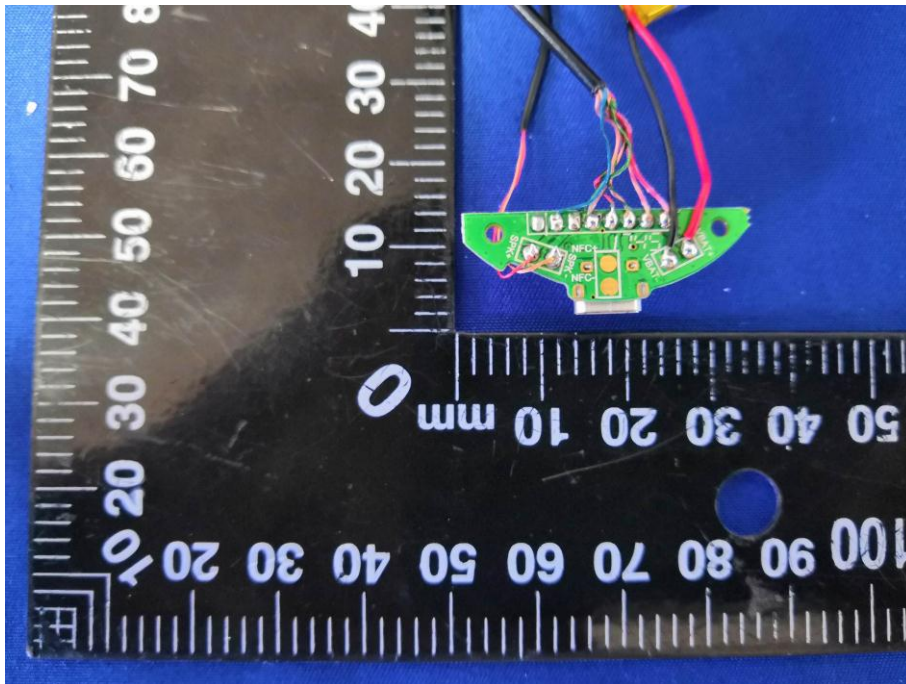
Mainboard - Rear View



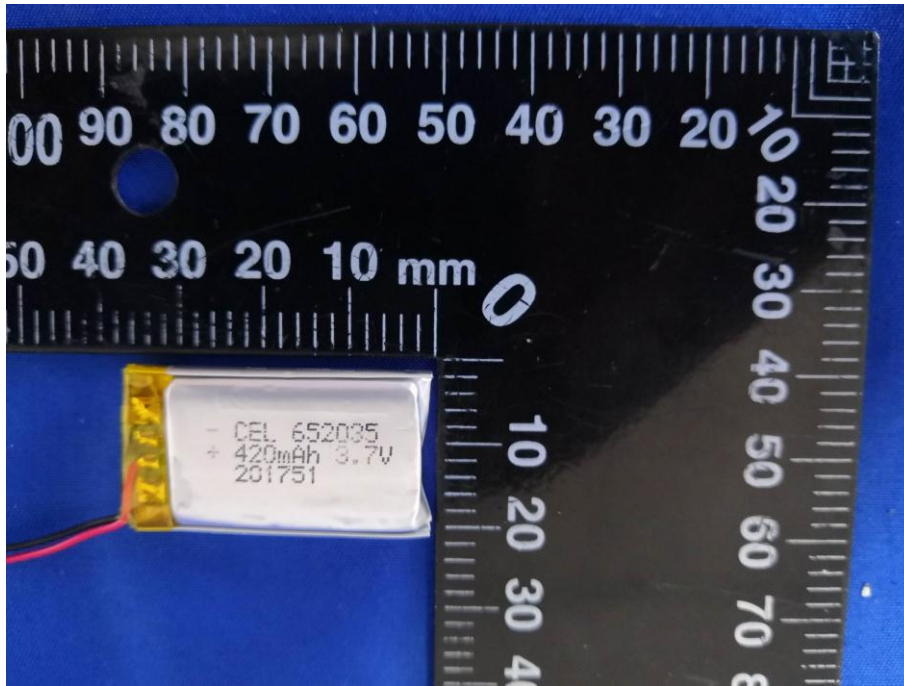
Small board - Front View



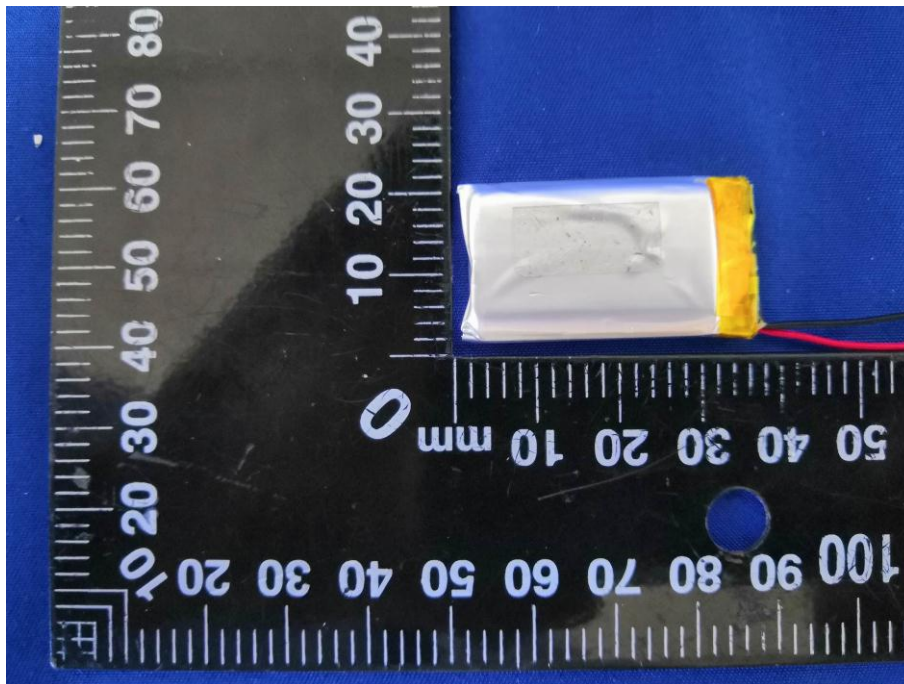
Small board - Rear View



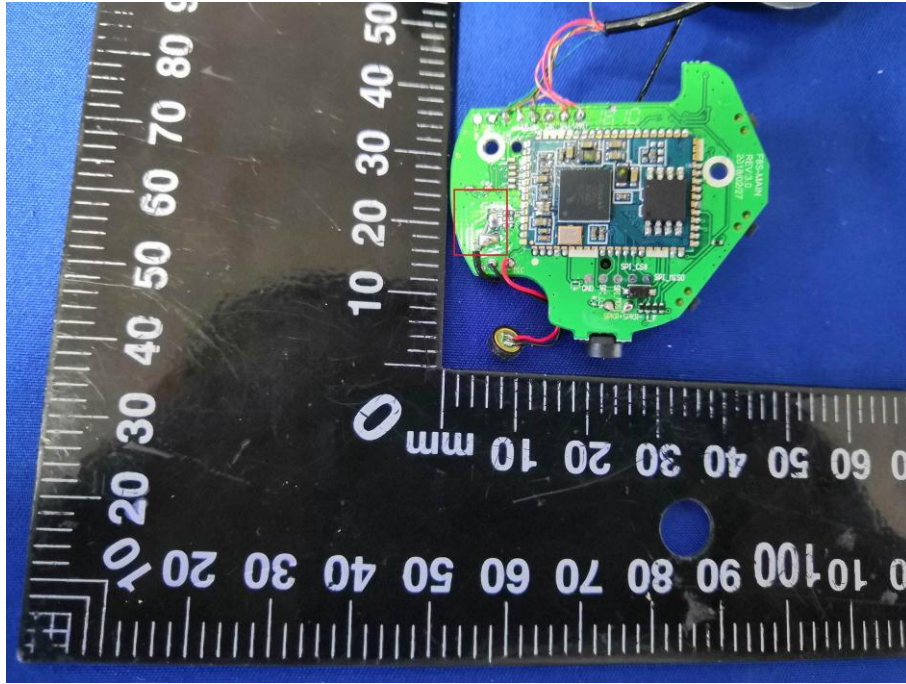
Battery - Front View



Battery - Rear View



BT - Antenna View



**Annex B.iii. Photograph: Test Setup Photo**



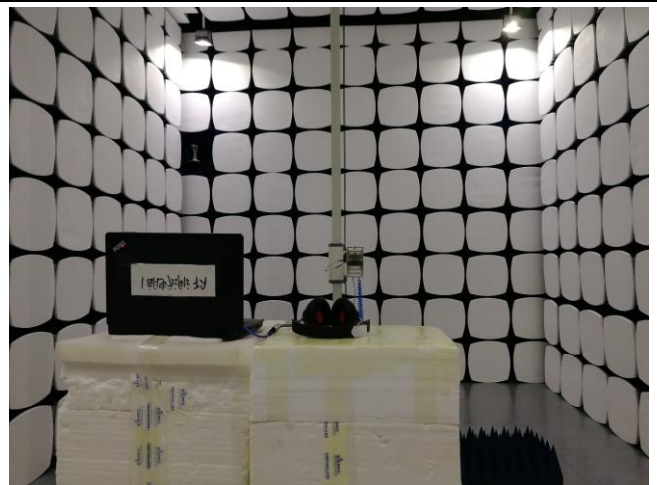
Conducted Emissions Test Setup Front View



Conducted Emissions Test Setup Side View



Radiated Spurious Emissions Test Setup Below 1GHz



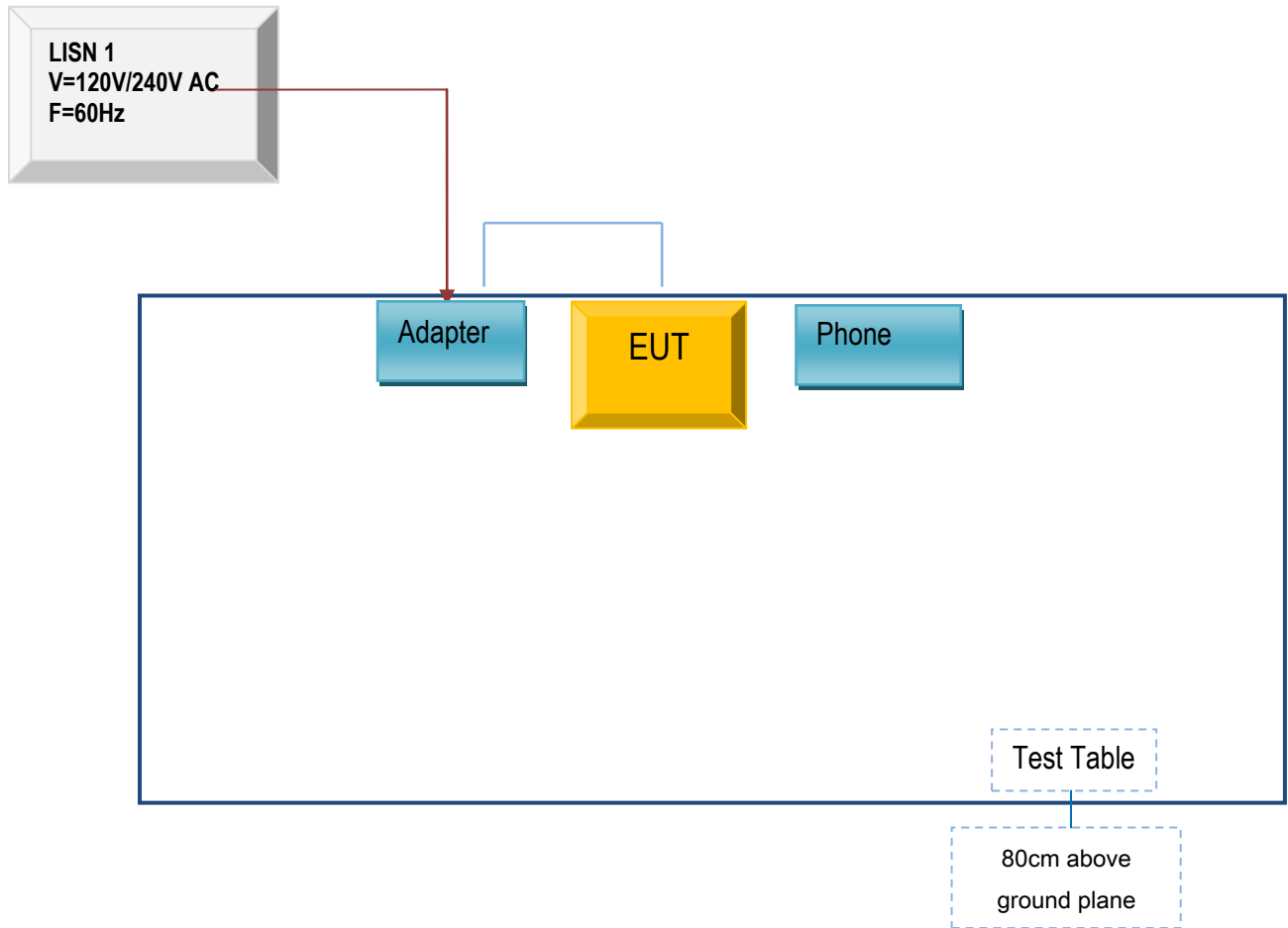
Radiated Spurious Emissions Test Setup Above 1GHz



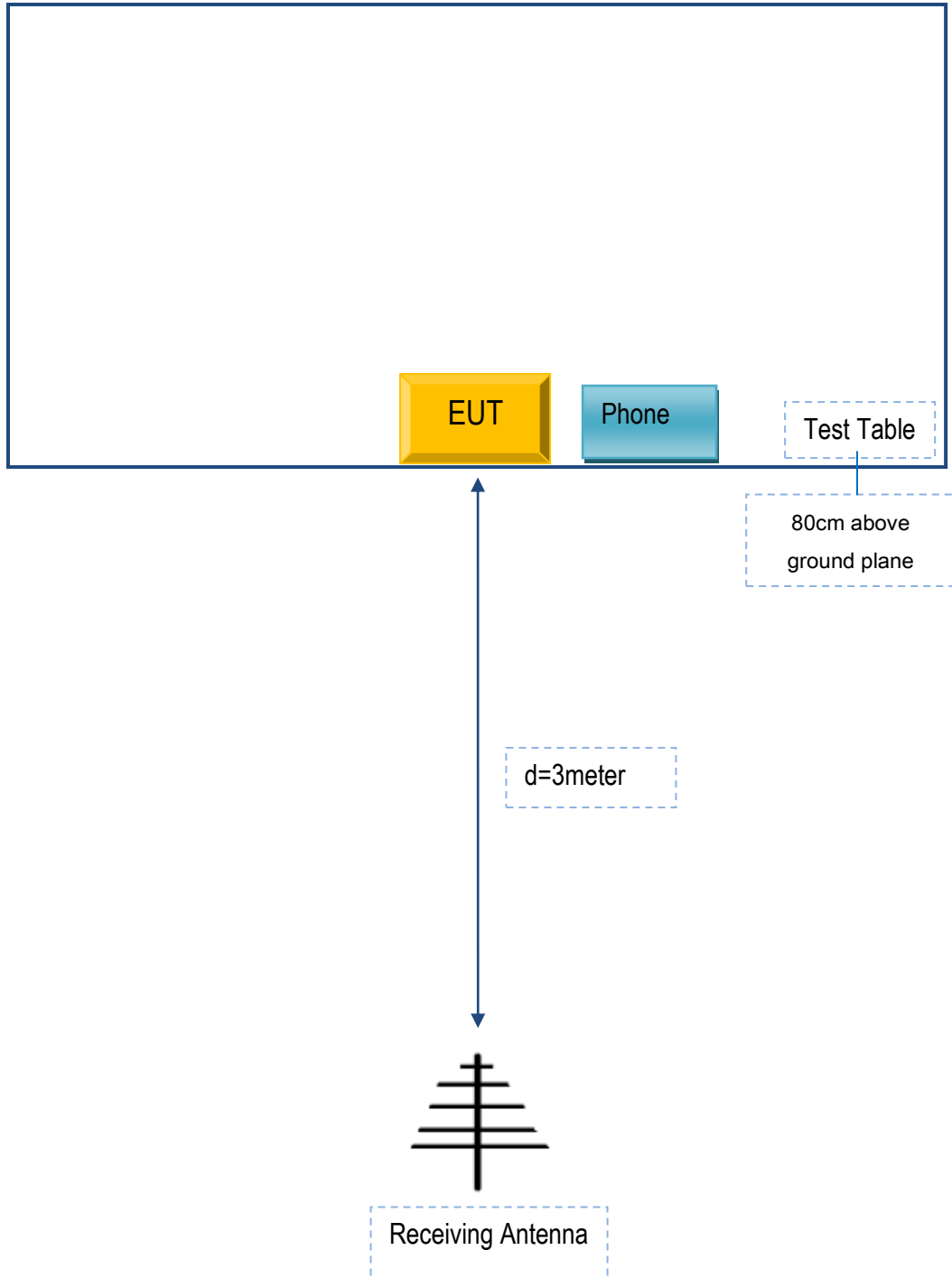
## Annex C. TEST SETUP AND SUPPORTING EQUIPMENT

### Annex C.ii. TEST SET UP BLOCK

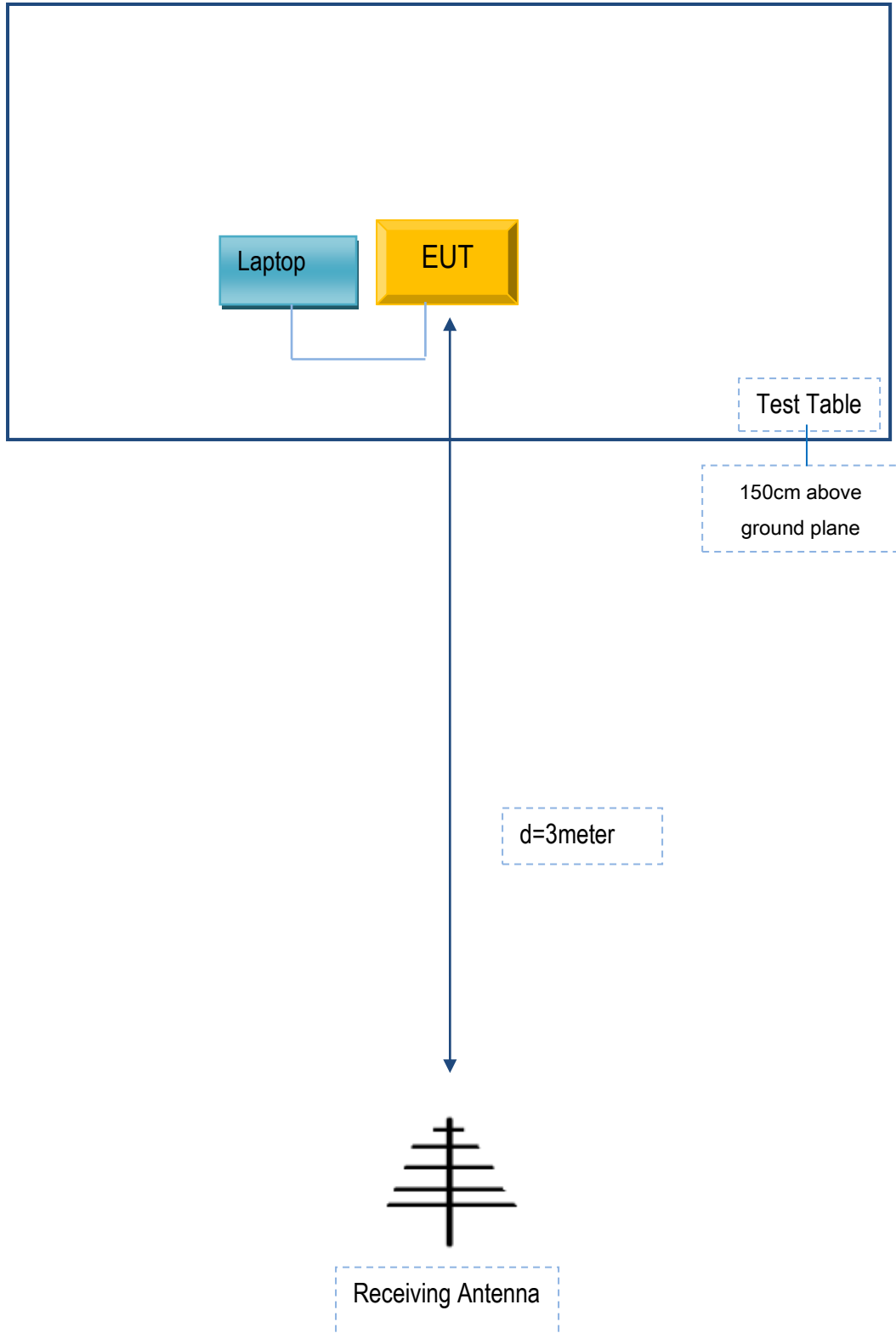
#### Block Configuration Diagram for AC Line Conducted Emissions



**Block Configuration Diagram for Radiated Emissions ( Below 1GHz ) .**



**Block Configuration Diagram for Radiated Emissions ( Above 1GHz ) .**



## Annex C. ii. SUPPORTING EQUIPMENT DESCRIPTION

The following is a description of supporting equipment and details of cables used with the EUT.

### Supporting Equipment:

Manufacturer	Equipment Description	Model	Serial No
Lenovo	Laptop	E40	LR-1EHRX
Huawei	Phone	Honor 9	N/A

### Supporting Cable:

Cable type	Shield Type	Ferrite Core	Length	Serial No
Power Line	Un-shielding	No	0.8m	N/A

Test Report No.	18070475-FCC-R2
Page	45 of 46

## Annex D. User Manual / Block Diagram / Schematics / Partlist

Please see the attachment

Test Report No.	18070475-FCC-R2
Page	46 of 46

## Annex E. DECLARATION OF SIMILARITY

N/A