

Lucis NuBryte

Extended Product Manual

Document Version 1.1

Product Description

NuBryte is the brand name for a connected home management console developed by Lucis Technologies.

The product does not require a qualified electrician for installation and is completely DIY.

It replaces US standard 1 and 2 gang light switches in the home to help user control their lighting as well as provide additional features via it's touch-screen interface, including:

- Digital dimming
- Ambient light adjustment
- LearningLights™ behavioural monitoring
- Subscription free security including real time video surveillance and push alerts
- Family calendars, weather alerts and more.

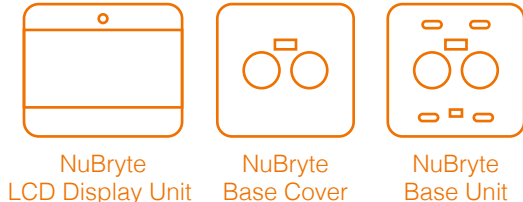
NuBryte runs on the standard WiFi protocol and can communicate with other NuBryte in the home if more than one is installed to increase security coverage and act as an intercom.

NuBryte will initially be exclusive to the US market and due for release Summer 2015.

Package Includes

- 1 X NuBryte LCD Display Unit
- 1 X NuBryte Base Unit
- 1 X NuBryte Base Cover
- 8 X Wire nuts
- 8 X Screws
- 1 X Quick Start Guide
- 2 X Security window stickers
- 1 X Sheet wire labels

(Single Gang: 4 x Wire nuts, 4 x Screws)



System Requirements

- Wireless (WiFi) Router
- Neutral wire
- Replace Single / Double gang switch (Not to be installed with a 3-way or Multiway Switch!)

For mobile connectivity, ensure your phone runs on:
Android 4.0 or higher, or
IOS V7 or higher

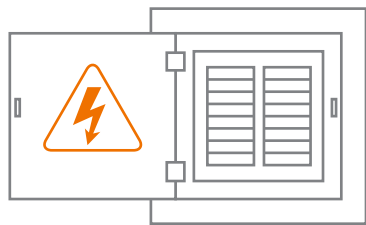
Compatibility

NuBryte operates with most types of light bulbs. To ensure optimal Advanced Lighting performance, we suggest using:
Dimmable LED (≤150W)
Dimmable CFL (≤150W)
Incandescent (≤600W)

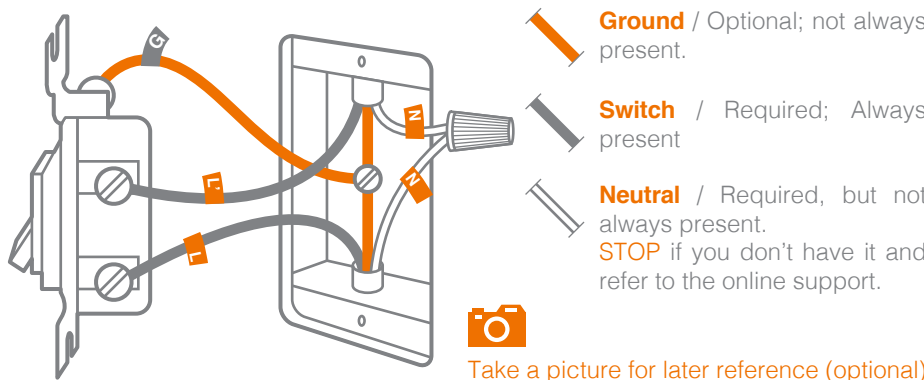
Quick Install Guide

(!) Risk of Electrical Shock. Please thoroughly read instructions and safety warnings before installing.

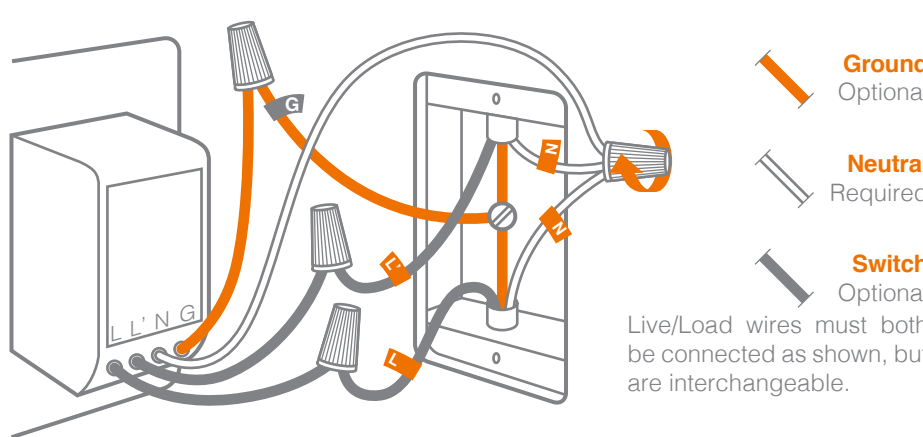
- 1 Turn OFF power
Turn power OFF at the circuit breaker.



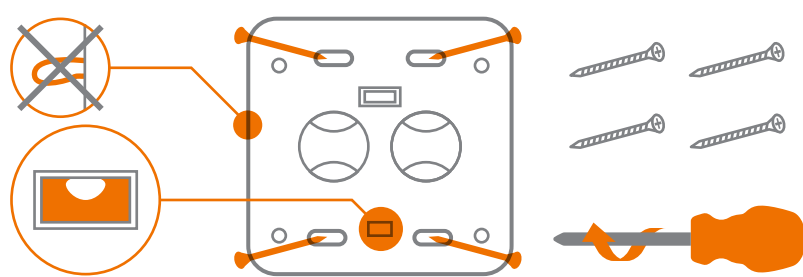
- 2 Remove your old switch. Attach the provided labels to the corresponding wires to help you remember which were wired together. Refer to the color key below for help identifying the wires:



- 3 Install the NuBryte Base Unit, using the labels to identify the correct wires to twist together with enclosed wire nuts.

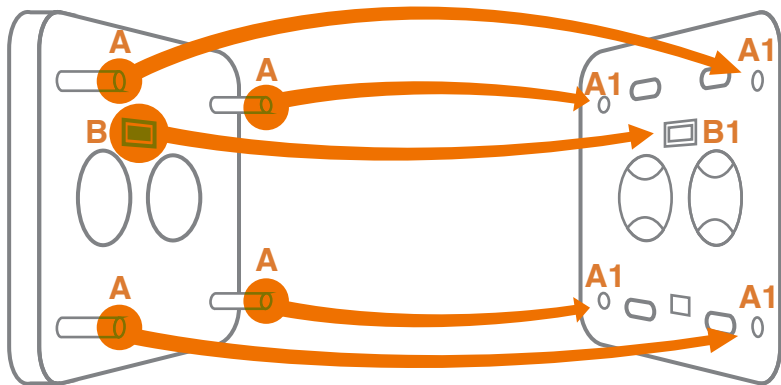


- 4 Screw the Base Unit into your home's existing junction box, using the provided screws. Make sure all of the wires are neatly tucked into the box and enclosed behind the Base Unit. Use the built-in level to ensure the unit is straight.

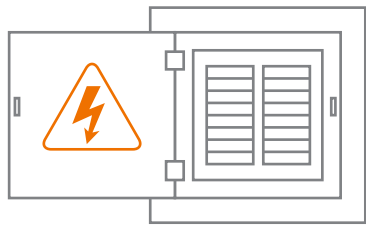


- 5 Attach the Display Unit

Align the four pegs in each corner on the back of the LCD Display Unit with the corresponding holes on the Base Unit (Match A with A1). Once aligned, press the LCD Display Unit onto the Base Unit until you hear a click.



- 6 Turn ON power
Turn ON power at the circuit breaker





WWW.NUBRYTE.COM
WWW.LUCIS-TECH.COM

- 7 **Download** the **NuBryte** App and **install** on your smart phone.



- 8 Log onto **www.nubryte.com** to **register a free family account** for the whole family. This account is to make sure that only you and your family members have access to the NuBryte system.

- 9 Follow the setup wizard on the device to get started with the NuBryte system.

- 10 Go online at **www.nubryte.com** to see our **Master User Guide** to learn more about NuBryte and it's features.

- + You could also take off your **LCD Display Unit** and operate your lighting manually with **Base Unit**. Attach **Base Cover** to the **Base Unit** to prevent dust and keep aesthetic appearance.

Limited Warranty

Lucis Technologies warrants NuBryte products purchased in the U.S. for one year. For full warranty information please visit: **www.nubryte.com**

Important Notes & Safety

Your safety is important. Please read these notes before installing.

CAUTION: Use only with permanently-installed lighting fixtures. To avoid overheating and possible damage to other equipment, do not use to control receptacles, fluorescent lighting fixtures, motor-driven appliances, or transformer-supplied appliances.

Installations should be performed in accordance with all national and local electrical codes. This product should not be installed on circuits where multiway switches exist (two or more switches controlling the same light). NuBryte requires a neutral wire.

If you are unsure or have questions about the installation, please visit **www.nubryte.com** or seek the advice of a qualified electrician.

If you notice anything unusual about the electricity supply to your light switch, such as loose wires, exposed cabling, burn marks, holes in the insulating materials or damage to the electric wires, **STOP IMMEDIATELY** and seek the advice of a qualified electrician.

NuBryte
Quick Start Guide

User Interface Manual

Lighting (Primary Mode)

- 1、 Default screen displays main light bulb controls; tap once for on/ off and slide inwards/ outward to dim and brighten bulb(s).
- 2、 If two lighting fixtures are wired a switching button is available on-screen to switch between fixture A and B; tap the button once to alternate between controls for fixture A and B.
- 3、 Control all fixtures connected to NuBryte, whether hard-wired or WiFi connected, with the Control Panel button; tap once to display all fixtures in range (this may take a few seconds to load) and tap each control button once to turn a light on/ off. Press “Back” to revert to the default screen.

(**Please note**, different lighting control options can be found within the ‘Lighting’ settings and their operation may differ slightly from the description above.)

Temperature & Weather

- 1、 The first screen shows the current room temperature & humidity level. This information is provided by sensors built into the NuBryte console.
- 2、 Swipe left to the second screen to show the current outdoor weather conditions. The actual temperature and current conditions in the form of an icon are provided along with a “Feels like” value based on a number of factors. This data is provided by a development partner and updated in real time throughout the day.
- 3、 The next screen gives a breakdown of the weather forecast for the next 24 hours, detailing how the conditions are expected to change in a list format.
- 4、 Lastly a 5 day weather forecast is provided, showing the expected high and low temperature values and weather conditions for each day.

(**Please note**, NuBryte will push weather-related alerts to you when appropriate to inform you of unexpected changes in weather. These alerts will trigger as you pass the console at home and can be dismissed by swiping left on the touchscreen. However, NuBryte has not been designed to act as an early warning system for extreme weather events, i.e. hurricanes, tornadoes, etc and so must not be used as such.)

Time Management

- 1、 The default screen displays the current time in either 12 or 24 hour format (based on your preferred setting) and today's date.
- 2、 The second screen features a programmable alarm. Touch the alarm numerals and swipe up and down to set and select the days you would like the alarm to repeat.
- 3、 The last screen is a timer feature that will countdown from the set value in hours/ minutes/ seconds. Touch the timer numerals and swipe up and down to set. Press once to start and again to pause. Once pause select to resume the timer or reset it to zero.

(**Please note**, NuBryte's iOS & Android APP includes a shared family calendar feature that allows you to set up events and share them with others. If an event has been set-up and is due, it will be displayed on the NuBryte console at the desired time to notify family members at home and on their cell phones when they are out.)

Energy Monitoring

- 1、 NuBryte monitors how much energy the lighting fixtures that are connected to the system consume. This includes both hard-wired fixtures and WiFi connected fixtures.
- 2、 Each day's consumptions is represented by a circular disc. The default units are kWh, represented in the kWh consumed and the average kWh normally consumed.
- 3、 Tap the disc once to display the estimated cost of this consumption in \$USD.
- 4、 You can quickly see if you have consumed more than your average consumption by noting the size of the disc. If the outer circle is large, then you have consumed more than normal, if smaller then you have made a saving.

NuBryte Settings

1、 General Settings:

- A. Volume: adjust the device volume size
- B. Choose room type: living room, bedroom, kitchen, bathroom, nursery
- C. Give your device a name

- 2、 **Network Settings:** Select network from a list found in range. Next enter your network password. Use the "Show Password" option to check for any typing errors.

3、 Lighting:

- A. Choose one of the 3 light control design options available.
- B. Enable or disable the LearningLights™ smart lighting mode.
- C. Confirm whether or not the bulbs in the lighting fixtures hard-wired to your NuBryte console are dimmable or not.
- D. If they are dimmable, they need to be calibrated with the controller. Slide the bar just beyond the point where they stop flickering. Conduct this process twice if two fixtures are hard-wired.
- E. Choose to enable or disable lighting notifications, e.g. push messages that ask you if you want to turn off lights you have left on.

- 4、 **Security:** Security settings allow you to modify the set pin number used to enable/disable security. To do this first enter the existing pin code, followed by the desired new code. Enter the new code again to confirm and complete the process.

5、 Time:

- A. Set the time and choose between 12 and 24 hour time formats.
- B. Select the clock style, with traditional quartz clock and digital clock types available.
- C. Select the timer style, choosing between either a segmented timer or digital counter.

6、 Appearance:

- A. Select what type of information you want to be displayed during the Screen Saver (activated when more than 1m away from NuBryte but within sight). Choose between Time, Weather and Photo Slideshow or a combination of all three options. Photos can be uploaded via the NuBryte iOS & Android APP.
- B. Adjust the backlight brightness of the NuBryte console.

7、 Setup Wizard:

- | | |
|---------------------------------------|----------------------------|
| A. Select your WiFi network | E. Select room type |
| B. Enter your WIFI Password | F. Give your device a name |
| C. Confirm if your bulbs are dimmable | G. Select a time zone |
| D. Calibrate your dimmable bulbs. | |

- 8、 **Device Information:** Displays system version, MAC address and other information.

Touch-sensitive Shortcut Buttons

- 1、 Lighting Control button:** Tap to switch directly to the lighting control interface
- 2、 Intercom button:** Choose a room you want to speak to then press and hold the relevant icon whilst speaking to communicate.
- 3、 Main Menu button:** Takes you to the console menu.
- 4、 Security Key:** Tap to enable/ disable the security mode. A pin code will be required for interaction.

FCC RF Exposure Information and Statement

The SAR limit of USA (FCC) is 1.6 W/kg averaged over one gram of tissue. Device types Smart switch (FCC ID: 2AEONNUBRYTE) has also been tested against this SAR limit. The highest reported SAR values for body is 0.335 W/kg. This device was tested for typical body operations with the Front of the Product kept 10mm from the body. To maintain compliance with FCC RF exposure requirements, use accessories that maintain a 10mm separation distance between the user's body and the back of the Product. The use of belt clips, holsters and similar accessories should not contain metallic components in its assembly. The use of accessories that do not satisfy these requirements may not comply with FCC RF exposure requirements, and should be avoided.

FCC Warning

This device complies with Part 15 of the FCC Rules. Operation is subject to the following two conditions:

(1) This device may not cause harmful interference, and (2) this device must accept any interference received, including interference that may cause undesired operation.

NOTE 1: This equipment has been tested and found to comply with the limits for a Class B digital device, pursuant to part 15 of the FCC Rules. These limits are designed to provide reasonable protection against harmful interference in a residential installation. This equipment generates, uses and can radiate radio frequency energy and, if not installed and used in accordance with the instructions, may cause harmful interference to radio communications. However, there is no guarantee that interference will not occur in a particular installation. If this equipment does cause harmful interference to radio or television reception, which can be determined by turning the equipment off and on, the user is encouraged to try to correct the interference by one or more of the following measures:

- Reorient or relocate the receiving antenna.
- Increase the separation between the equipment and receiver.
- Connect the equipment into an outlet on a circuit different from that to which the receiver is connected.
- Consult the dealer or an experienced radio/TV technician for help.

NOTE 2: Any changes or modifications to this unit not expressly approved by the party responsible for compliance could void the user's authority to operate the equipment.