

A

B

C

D

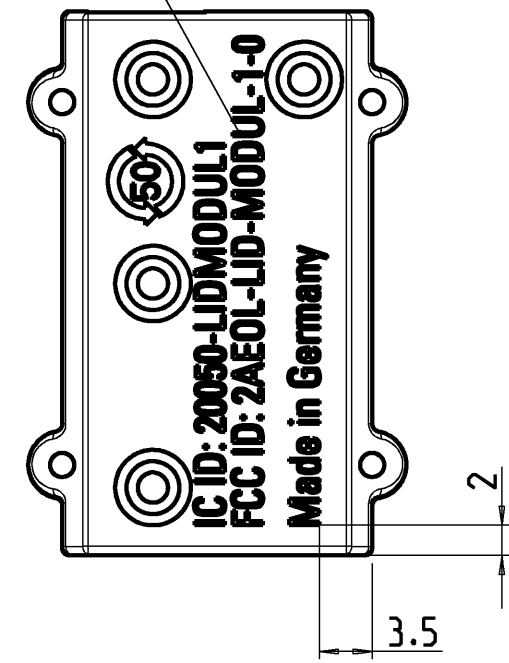
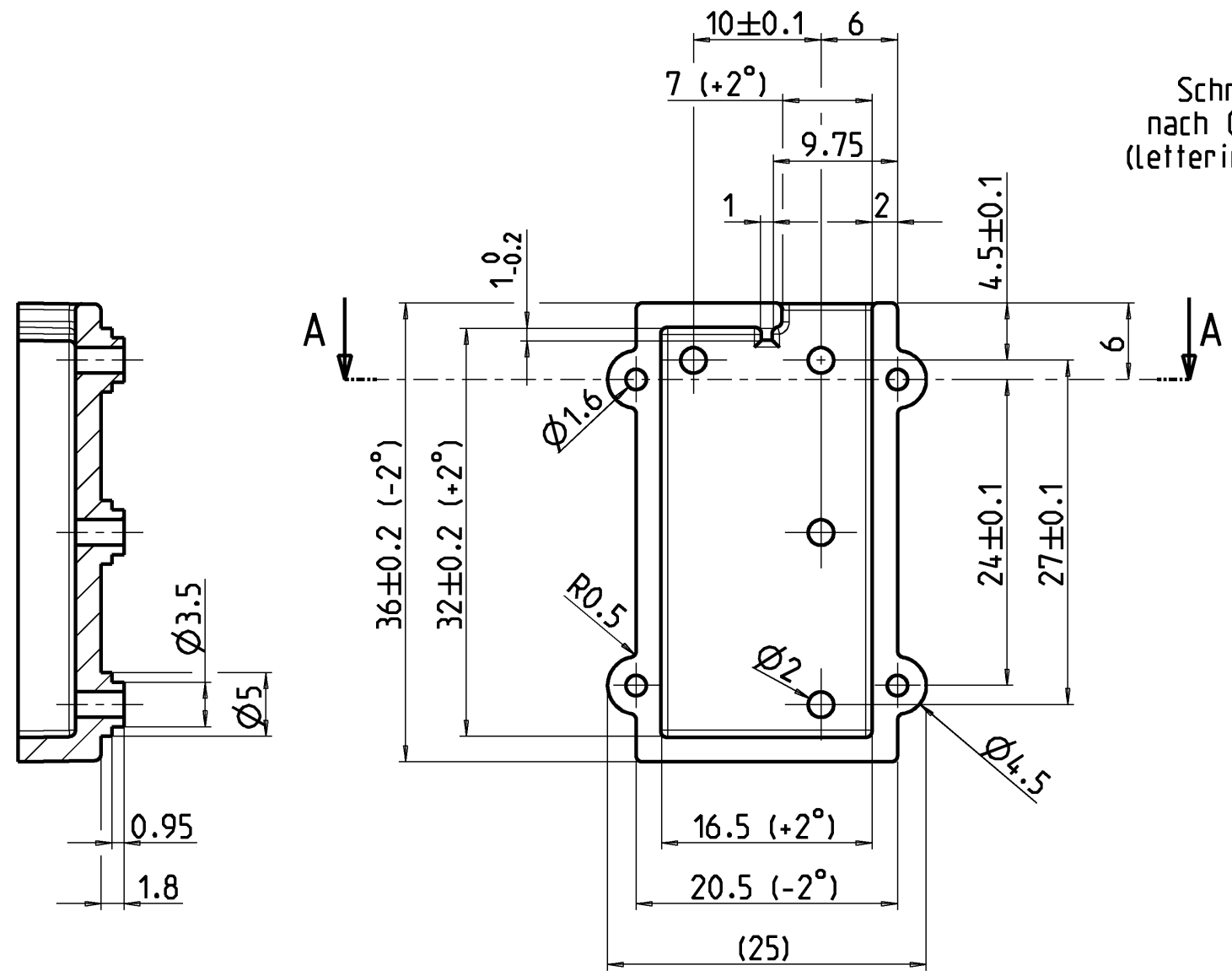
A

B

C

D

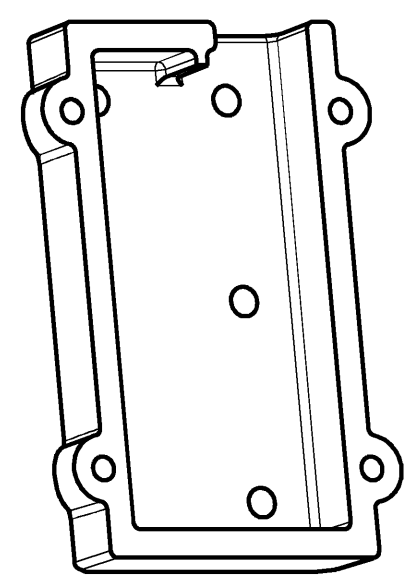
Schrift erhaben bis 0.2mm  
nach Originalvorlage D 2467  
(lettering raised up to 0.2mm  
to artwork D 2467)






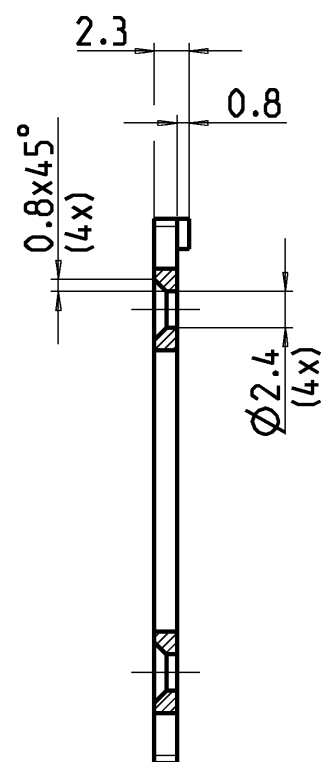
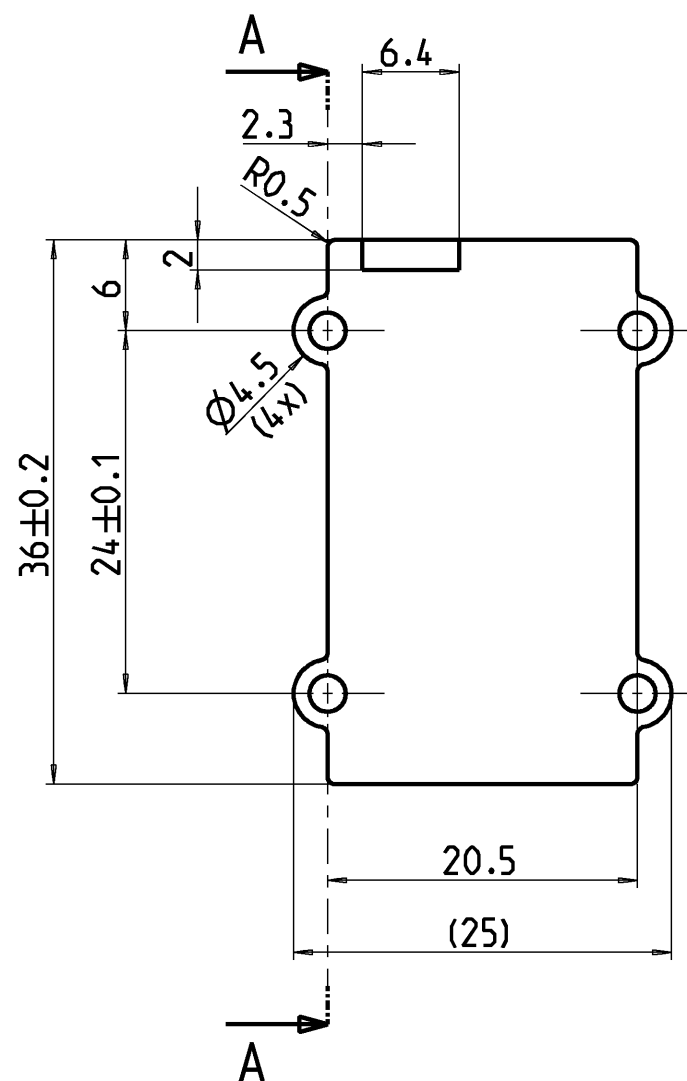
X — Formtrennung  
(parting line)

alle unbemaßten Radien R=0.5 mm  
all unspecified radius R=0.5 mm

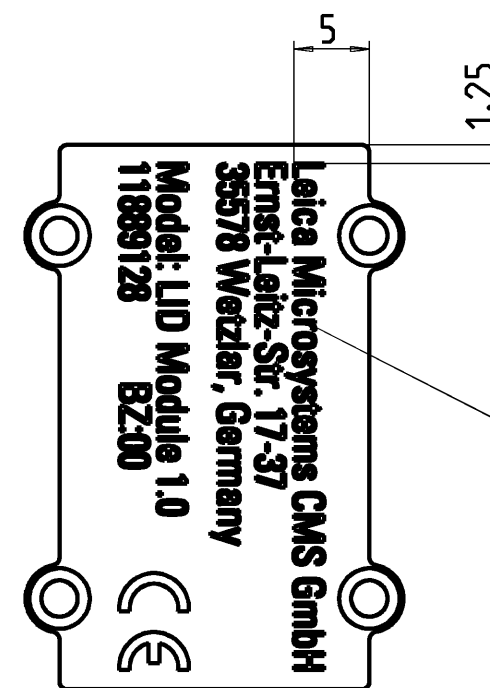
alle unbemaßten Formschrägen S=1°  
all unspecified draft angels S=1°



Material PA 6			Intermediate Product			Remark UL94 V0			 						
Tradename			Similar Component			Name Gehäuse RFID, Rohteil housing RFID, raw part									
Scale 2:1		Size ISO 14405 (E) General tolerances ISO 2768-mH													
			Designer	SIMMER-S	05.03.15	Material-No. 11 090 148 057 015				Doc.-Type		Sub-ID		Ver.	
			1.Release	Jung	05.03.15					Z		0000		06	
			Changed by	Simmer	11.06.15										
						Ch.Release	Jung	07.07.15	Change-No.: P2015-1192			TIF-Date: 07.07.2015			Sheet 1/1

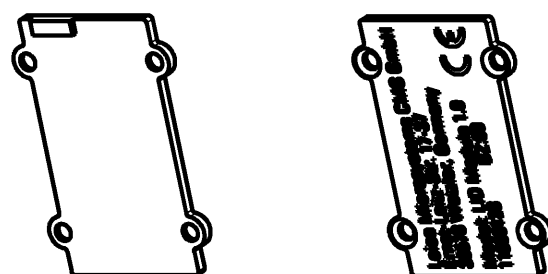


A - A

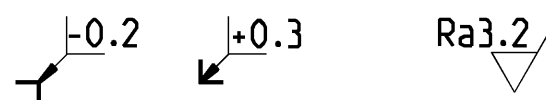


Schrift erhaben bis 0.2mm  
nach Originalvorlage D 2465  
(lettering raised up to 0.2mm  
to artwork D 2465)

alle unbemaßten Radien R=0.5 mm  
all unspecified radius R=0.5 mm



1:1



Material PA 6			Intermediate Product			Remark UL94 V0							
Tradename			Similar Component			Name Deckel RFID cover RFID							
Scale 2:1	Size ISO 14405 (E) General tolerances ISO 2768-mH												
			Designer	SIMMER-S	05.03.15	Material-No.			Doc.-Type		Sub-ID		Ver.
			1.Release	Jung	05.03.15	11 090 148 057 010			Z		0000		05
			Changed by	Simmer	11.06.15								
			Ch.Release	Jung	07.07.15	Change-No.: P2015-1192		TIF-Date: 07.07.2015		Sheet 1/1			