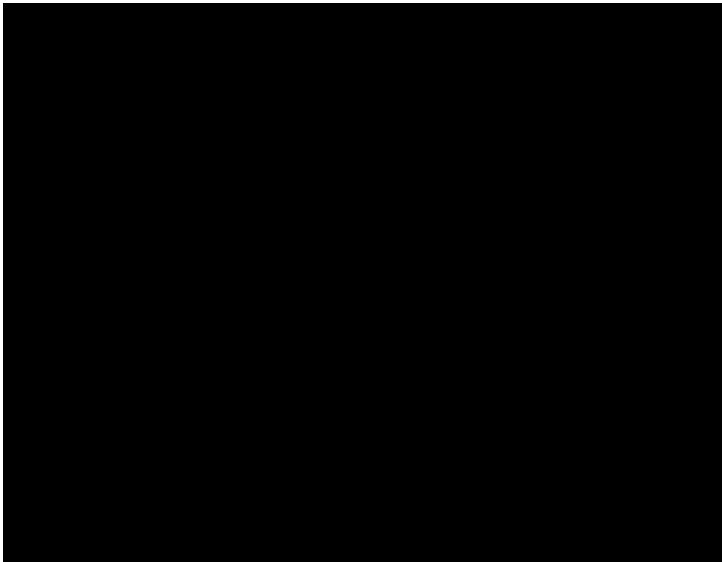


[www.tittlelight.com](http://www.tittlelight.com)

 tittle  
3D LED SMART LAMP

COPYRIGHT 2016. SPIN-R LLC ALL RIGHTS RESERVED.

INSTRUCTION MANUAL



## ACKNOWLEDGEMENTS

First of all, thank you for supporting Tittle Light.

Like you, we also like shiny objects. We have always been attracted to colorful things from Christmas tree lights to fireworks to city neon lights. We are drawn to them because they bring us ineffable joy. A smile to our faces. It has that type of effect. And that's why we invented Tittle Light. We want to share that joy with you at your home.

We believe Tittle Light can create a dialogue between light, sound and space. The way we connect with light can now be much more interactive. It's not just a lamp. It's a whole new experience with lights.

Your support has allowed us to pursue our dream. And we are excited to share this dream with you now. We hope Tittle Light will bring a bundle of colors into your life.

Again, thank you for making Tittle Light happen.

Kinsen & David

## IMPORTANT NOTES

IMPORTANT SAFETY INSTRUCTIONS Warning and Important Safety Instructions appearing in this guide are not meant to cover all possible conditions and situations that may occur. Common sense, caution, and care must be exercised when installing, maintaining, or operating the appliance. Always contact the manufacturer about problems or conditions you do not understand. Recognize Safety Symbols, Words, Labels WARNING – Hazards or unsafe practices which COULD result in severe personal injury or death. CAUTION – Hazards or unsafe practices which COULD result in minor personal injury. WARNING CAUTION Read and follow all instructions before using this appliance to prevent the potential risk of fire, electric shock, personal injury or damage to the appliance as a result of improper usage of the appliance. Use appliance only for its intended purpose as described in this guide. To ensure proper and safe operation: Appliance must be properly installed and grounded by a qualified technician. Do not attempt to adjust, repair, service, or replace any part of your appliance unless it is specifically recommended in this guide. All other servicing should be referred to a qualified servicer. Always disconnect power to appliance before servicing.

## CONTENTS

INTRODUCTION .....	4
SPECIFICATION OF TITTLIGHT.....	5
COMPONENTS .....	6
MAIN COMPONENTS .....	7
CONNECT TO YOUR TITTLE LIGHT.....	8-13
APP OPERATION .....	14-21
FIRMWARE UPDATE .....	22
CERTIFICATION AND SAFETY APPROVALS .....	23-24
FAQ .....	25
SERVICES .....	26

## INTRODUCTION

Tittle Light is an innovative interactive LED lamp that instantly transforms any home environment and titillates the senses with a variety of beautiful and custom 3D animations. It allows users to easily set the tone for any occasion with a variety of settings such as mood lighting, music visualizations, time and custom emojis.

The versatility of the Tittle Light cube is its best feature, fitting perfectly into any setting from your home to your office, a night lounge to an upscale bar. It has a smooth, changing glow cycle that enhances any space with red, orange, blue, purple, yellow, and green. Whether it's communicating unique emojis, programming custom animations, or simply shifting the color scheme of a space, Tittle Light can do it all!

## SPECIFICATION OF TITTLE LIGHT

WiFi : 802.11 b/g/n      FCC ID: 2AEO9V79801

Memory : 64MB Flash Memory

LED : 512 pcs RGB Super LED

Power :  
International Multi Plug Power Adapter /  
input : a.c. 100-240v 50-60Hz 1A / output : d.c. 5v 4.5A 22.5W

Power consumption :  
Min (lamp mode - all LED light on) : 3.7A 18.5W /  
Max(lamp mode - all LED light on) : 4.5A 22.5W

Size :  
Product Dimension : 179 X 179 X 214.5 (mm) /  
Product Weight : 1.5kg /  
Inter packing : 235 X 235 X 320 (mm) / Outer carton : 260 X 255 X 335 (mm)

Glass : Borosilicate glass

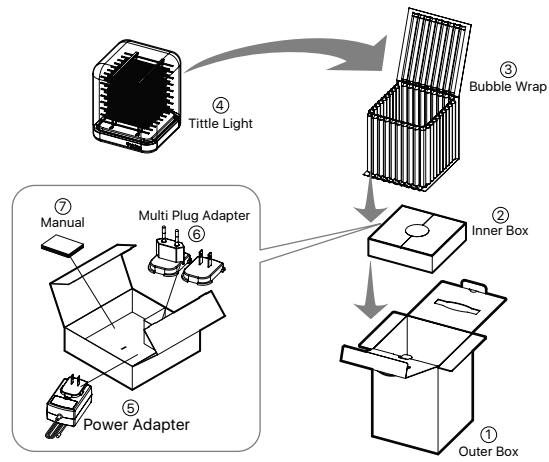
Base : Zinc Alloy

Certificate :



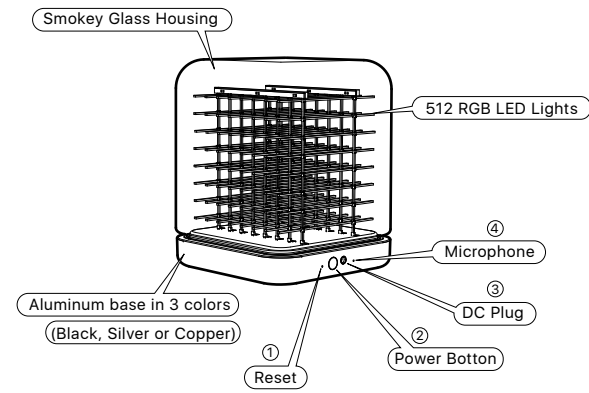
RoHS

## COMPONENTS



6

## MAIN COMPONENTS

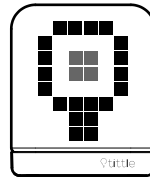


7

## CONNECT TO YOUR TITTLE LIGHT

### TO START

- 1a. Connect the power adapter to a DC Plug.
- 1b. Press power button to turn on Tittle Light. (It will show the Tittle Light logo animation as the "on" signal.)



### DOWNLOAD APP

2. Search for "Tittle Light" at the Apple App Store or the Google Play Store and download the app.



### SIGN UP THE FIRST TIME

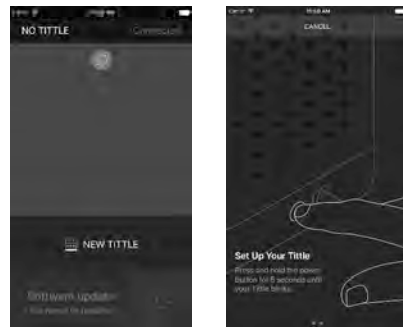
- 3a. Enter a valid email address.
- 3b. Then enter your password. Your password should be 8 characters or numbers.
- 3c. Enter your password again.



**CONNECT TO YOUR WIFI NETWORK**

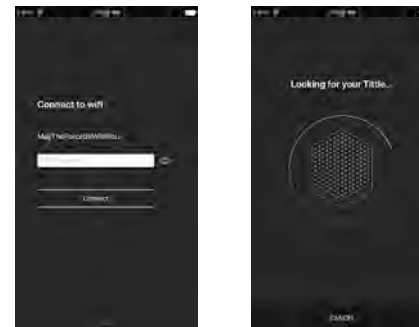
4a. Open mobile Tittle Light app and press "NEW TITTLE"

4b. Press and hold the power button of Tittle Light for 5 seconds until you see the white blinking animation. Now, Tittle Light enters wifi connection mode.



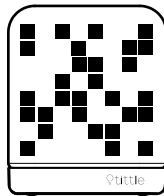
10

4c. Swipe to the left. Enter your wifi password, then press "CONNECT." (The WiFi SSID shown on screen should be where your mobile device is connected to.) Now the app is searching for your Tittle Light.

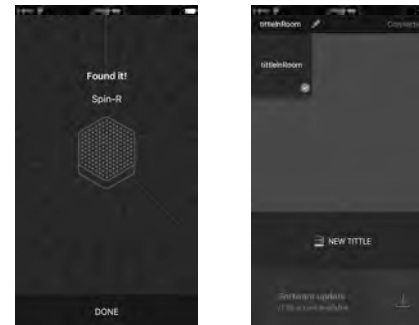


11

- 4d. Once the search for your Tittle Light is successful, the blinking animation will change from white to red.
- 4e. If the wifi password is clear with your wifi network, the blinking animation will change from red to green.



- 4f. After successful connect, please press "DONE", the green blinking will turn off, and the app screen will prompt "Found a Tittle Light"
- 4g. Now, you can give your Tittle Light a new name on the app.





## APP OPERARION

### LAMP

Choose your favorite color and intensity through a simple color wheel.



14

### CLOCK

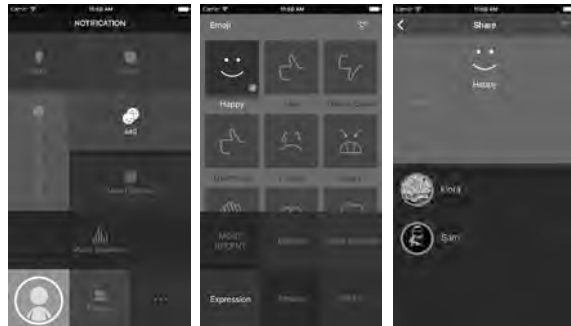
With a built-in quartz chip, Tittle Light can indicate time in both digital and analog manner.



15

### EMOJIS

You can display any 3D animated emojis on your Tittle Light, and you can send these emojis to any other Tittle Light users. Once you choose your emoji, press the "Share" button on the top right corner, which will lead you to the share page. Just type in your friend's name and a message, and your emoji will be sent.



### MOOD LIGHTING

Choose from various unique designs based on your current mood to create a dramatic atmosphere in any room.



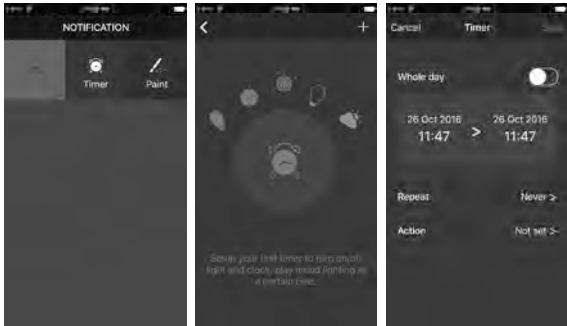
**MUSIC VISUALIZER**

Tittle Light can generate exhilarating 3D animated imagery through synchronizing with any surrounding music and sounds in real time.



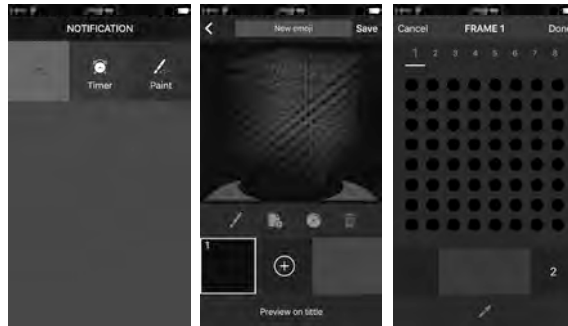
**TIMER**

You can choose to turn on or off Tittle Light at a specific time with a specific function.



### **PAINT**

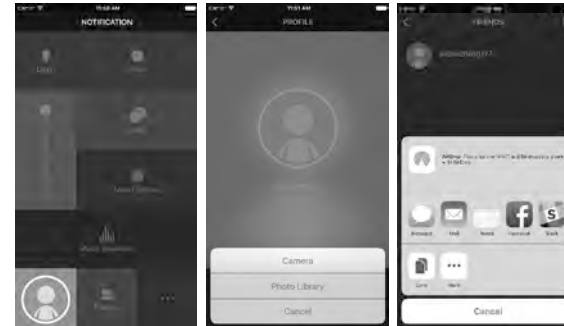
Through the mobile phone app or the web platform, users can create their own 3D animations on Tittle Light. Simply paint all 8 pages to create one frame and then add new layers to create an animation. The more layers you create, the longer the animation will become.



20

### **SHARE**

You can share and receive new lighting designs with your network of Tittle Light users.



21

### FIRMWARE UPDATE

When a new firmware update is ready for installation, a notification will be prompted on your app to remind you for an update. Simply press "Update" and it will automatically install for you.



### CERTIFICATION AND SAFETY APPROVALS

This device is CE \ FCC and BQB approved. Federal Communication Commission(FCC) Statement : Rule15.21 : You are cautioned that changes or modifications not approved by the manufacturer could void the warranty of the equipment. Page14of 14 6/18/2007 Rule15.105 (b) : This equipment has been tested and found to comply with limits for a Class B digital device, pursuant to part 15 of the FCC rules. These limits are designed to provide reasonable protection against interference in a residential installation. This equipment generates radio frequency and, if not installed and used in accordance with the instructions, it may cause interference to radio communications. However, there is no guarantee that interference will not occur in a particular installation. If this equipment does cause interference to radio or television reception, which can be determined by turning the equipment off and on, the user is encouraged to try to correct the interference by one or more of the following measures:

- Re-orientate or relocate the receiving antenna.
  - Increase the separation between the equipment and receiver.
  - Connect the equipment into an outlet on a circuit different from that to which the receiver is connected.
  - Consult the dealer or an experienced radio/TV technician for help. European Union Directives Conformance Statement: Bluetooth Wireless Speakers with hands free function (ABT-SPK-A8) is conformity with the appropriate standards EN300328, EN301489-1, EN301489-17, EN60950, EN50371.
- In accordance with the council directive 1999/5/EC. Advantek Networks and the Advantek Networks logo are trademarks of Advantek Networks, Inc. or its subsidiaries in the United States or other countries. All other company or product names

in the United States or other countries. All other company or product names mentioned herein are trademarks or registered trademarks of their respective companies.

## FAQ

Q1: What should I do if I can't turn on the power?

A: Make sure the power adaptor is properly plugged in to the DC outlet.

Q2: Tittle Light is powered, but there's no LED lights on?

A: Make sure to press the on/off button at least once. Also, make sure the intensity is not all the way to zero level.

Q3: Why can't I connect to my wifi?

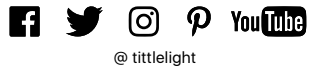
A: Tittle Light runs on 802.11 b,g,n . Make sure the wifi router is running under caption configuration and that you enter the correct wifi password.

Q4: Why can't the app be able to search my Tittle Light?

A: Make sure the mobile device is connected to the same wifi as the Tittle Light. When you open the app, it will search for your Tittle Light for 30 seconds automatically. Or else, drag down the menu to start the search again. If your wifi configuration has changed, you will need to reconnect your Tittle Light again.

## SERVICE

Email : [support@tittlelight.com](mailto:support@tittlelight.com)  
[www.tittlelight.com](http://www.tittlelight.com)



## **FCC statement**

This device complies with Part 15 of the FCC Rules: Operation is subject to the following two conditions:

1. This device may not cause harmful interference and
2. This device must accept any interference that is received, including any interference that may cause undesired operation.

Human exposure to RF emissions from mobile devices (47 CFR §2.1091) may be evaluated based on the MPE limits adopted by the FCC for electric and magnetic field strength and/or power density, as appropriate, since exposures are assumed to occur at distances of 20 cm or more from persons.

This device is acting as slave and operating in the 2.4 GHz (2412 ~2462 MHz ) band.

Ad Hoc function is supported but not able to operate on non-US frequencies.

Do not use the device with the environment which below minimum -10 °C or maximum over 50°C .

**NOTE:** This equipment has been tested and found to comply with the limits for a Class B digital device, pursuant to part 15 of the FCC Rules. These limits are designed to provide reasonable protection against harmful interference in a residential installation. This equipment generates uses and can radiate radio frequency energy and, if not installed and used in accordance with the instructions, may cause harmful interference to radio communications. However, there is no guarantee that interference will not occur in a particular installation. If this equipment does cause harmful interference to radio or television reception, which can be determined by turning the equipment off and on, the user is encouraged to try to correct the interference by one or more of the following measures:

- Reorient or relocate the receiving antenna.
- Increase the separation between the equipment and receiver.
- Connect the equipment into an outlet on a circuit different from that to which the receiver is connected.
- Consult the dealer or an experienced radio/TV technician for help

Changes or modifications to this unit not expressly approved by the party responsible for compliance could void the user's authority to operate the equipment.