



BMW Official
Licensed Product

RC ASSEMBLY MODEL KIT

Item No. 97200

Part Number: 80445A627A0

DIY SERIES

Scale 1:18

Assembly Plastic
Model Kit

66 PCS
& 8 PTS

2.4GHz
R/C



RASTAR



BMW M8 GTE

ATTENTIONS

ATTENTIONS

- An adult should read and understand the content of this manual before use. Assembly and use of the product should be conducted only under adult supervision.
- To avoid injury, the use of knives and tools in the assembly of this product should be performed by an adult.
- When not in use, store the product away from small children.
- Plastic bags are not toys and may cause a choking hazard. Please dispose of them responsibly after use.
- Some plastic components within this product feature sharp edges and points. Take care during assembly and when handling the model to avoid injury.
- Only alkaline or rechargeable batteries may be used in this product.
- Do not mix different types or new and old batteries. Exhausted batteries should be removed from the model.
- Batteries should be replaced under adult supervision and inserted with the correct polarity. Do not short circuit power terminals.
- Non-rechargeable batteries should not be recharged. Rechargeable batteries should be removed from the model before charging under adult supervision.
- Damaged or leaking batteries should not be charged and be disposed of responsibly.
- Wires and components must not be connected to mains electricity. The model must not be connected to power sources exceeding the stated level.
- Do not expose batteries to prolonged sunlight. Do not drop batteries. Keep batteries away from fire, heat and water.
- Skin and clothing exposed to any liquid leaked from batteries should be washed immediately.
- To optimise the lifespan of rechargeable batteries, recharge them regularly using only a charger of the same or equivalent type.

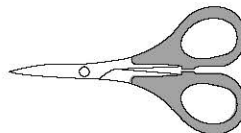
TOOLS (NOT INCLUDED)



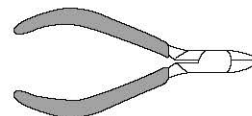
Knife



Tweezers



Scissors

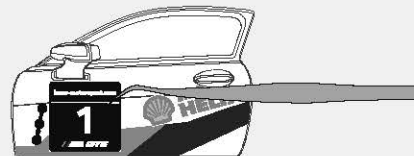
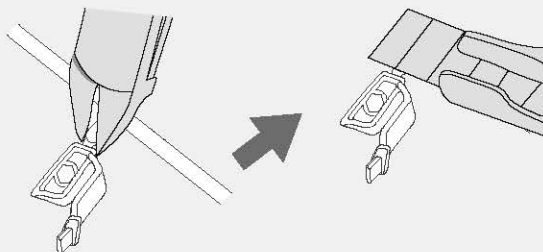


Flat-nose pliers

Components/ Assembly of Components

★Use flat-nose pliers to clip the component off, and then use knife to trim the interface part to be smooth.

★Peel off the sticker with tweezers and flatten it on the component.



⚠ WARNING: Tools must be used by adult (knife, tweezers, flat-nose pliers, scissors), please be careful to avoid personal injury!

CAR BODY / STICKERS

CAR BODY

The engine, suspension and driver's cab of the car are all black, the car body is red and the wheels are painted in silver. The stickers will be displayed during the following assembly process, you can also refer to the package drawing.

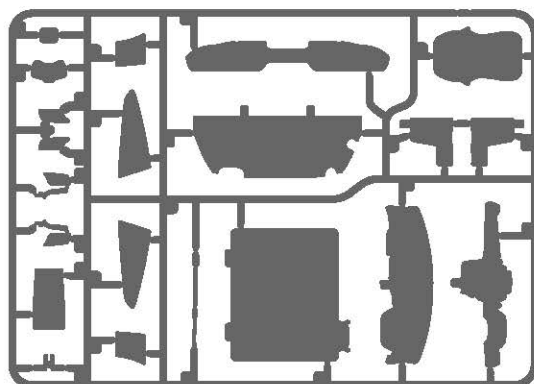
USE OF THE STICKERS FOR CAR BODY

- (1) Take the stickers out.
- (2) Carefully peel the sticker off with tweezers.
- (3) Hold the edge of the back plate and put the sticker on the model.
- (4) Fix the sticker with fingers and make the sticker in place.
- (5) Gently press the sticker downwards until the bubbles disappear.

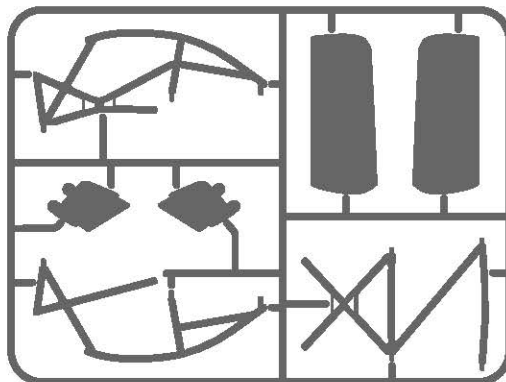
COMPONENTS

INSTALLED PROCEDURES FOR BMW M8 GTE

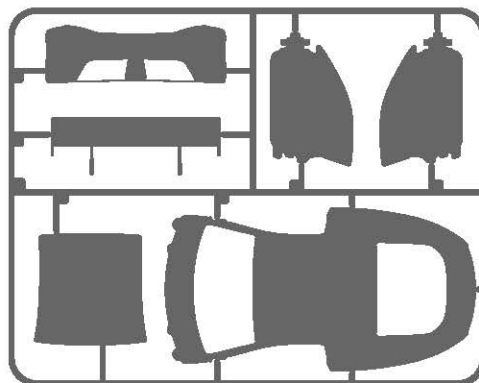
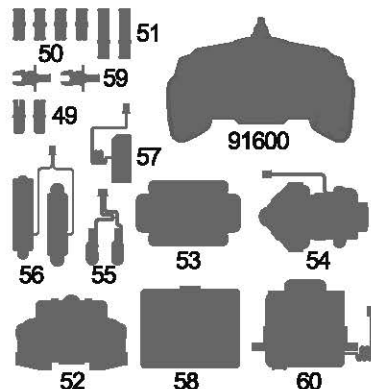
- (1) Take all parts out and make sure nothing is missing.
- (2) Do not remove all the parts at first, but just do assembly step by step according to instruction of the manual.
- (3) Take the stickers out and stick them on components first according to the instructions.
- (4) Assemble the car according to the figure.
- (5) Assembly process is completed.



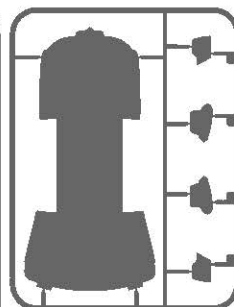
B12-B32



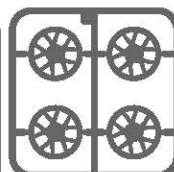
C33-C39



A4-A9



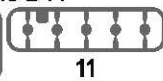
D40-D44



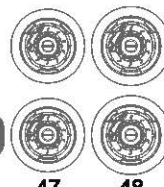
10



45-46

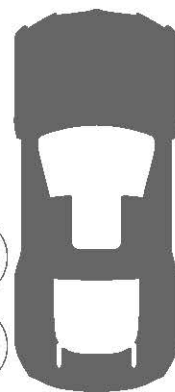


11



47

48



1



2



3

【1】 The item number of the applicable remote controller is 91600.

【2】 There are numbers corresponding to each model, please do assembly based on the corresponding numbers according to instructions.

The following is a detailed tutorial and guidance on how to assemble each part. Please pay attention to where there are icons on the right.

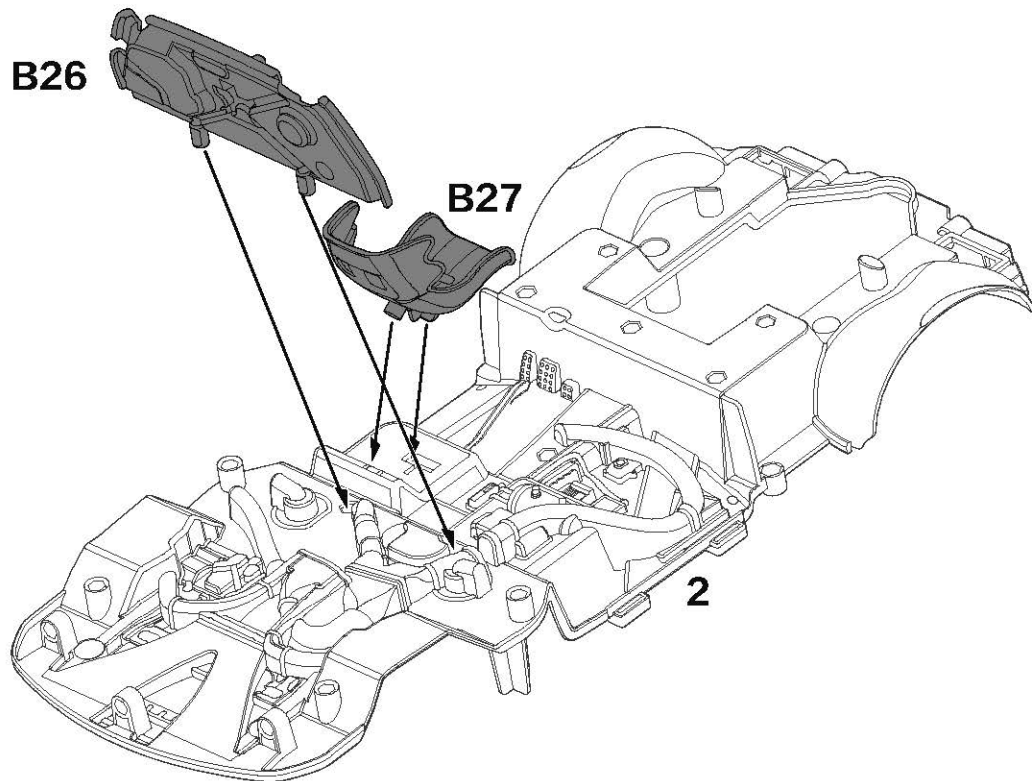


stickers

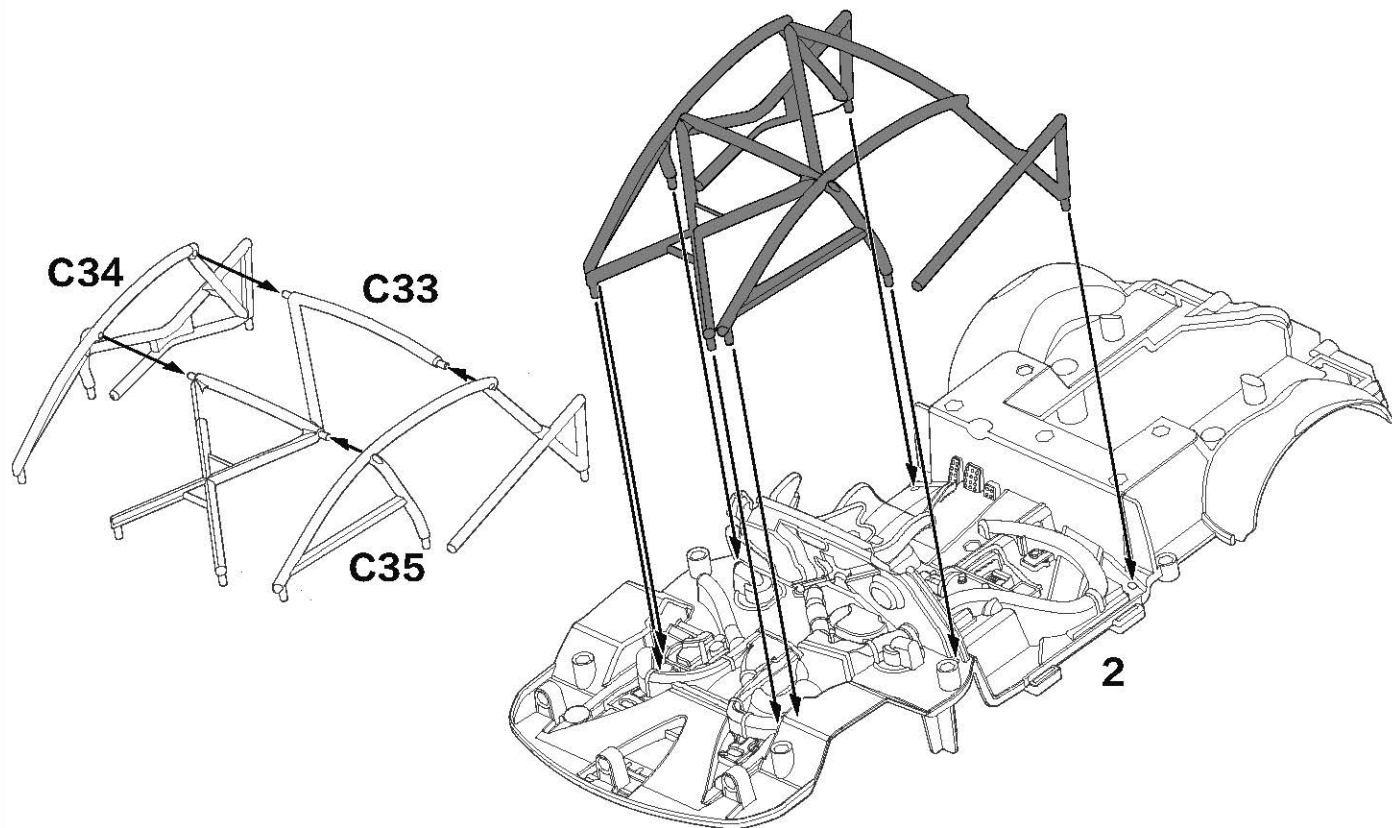


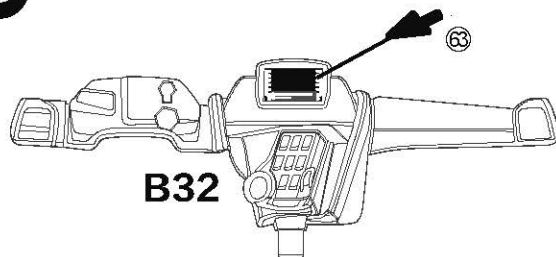
accessaries

- 1** Install B26 and B27 on 2.

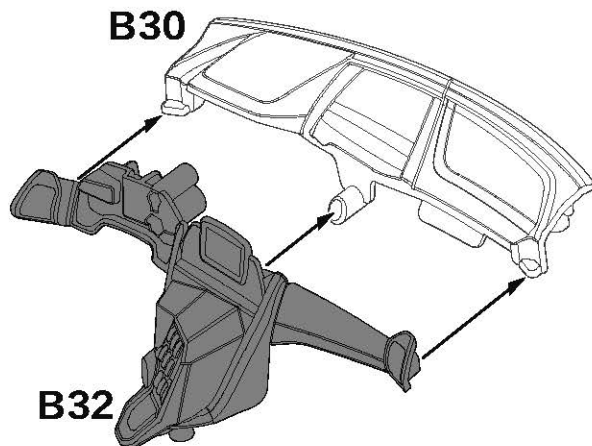


- 2** (1) Install C34 and C35 on C33.
(2) Install C33 on 2.



3**B32**

63

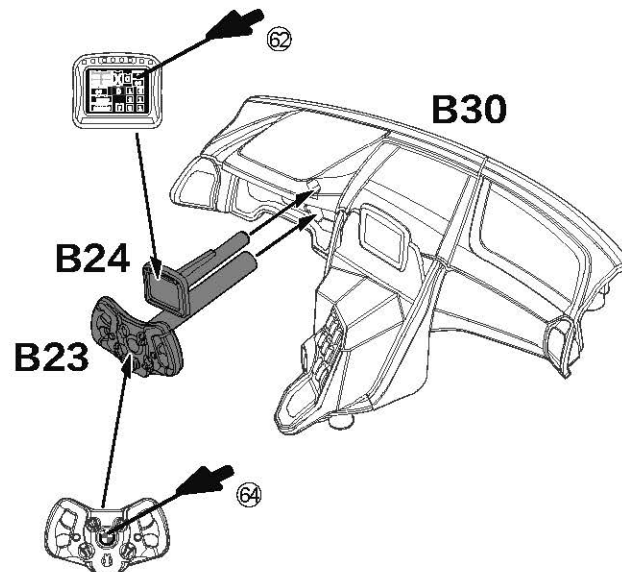
**B30****B32**

Stickers on the corresponding position according to the serial number marked in the figures .

(1) Install B32 on B30.

(2) Install B24 as shown in the figure.

(3) Install B23 as shown in the figure.



62

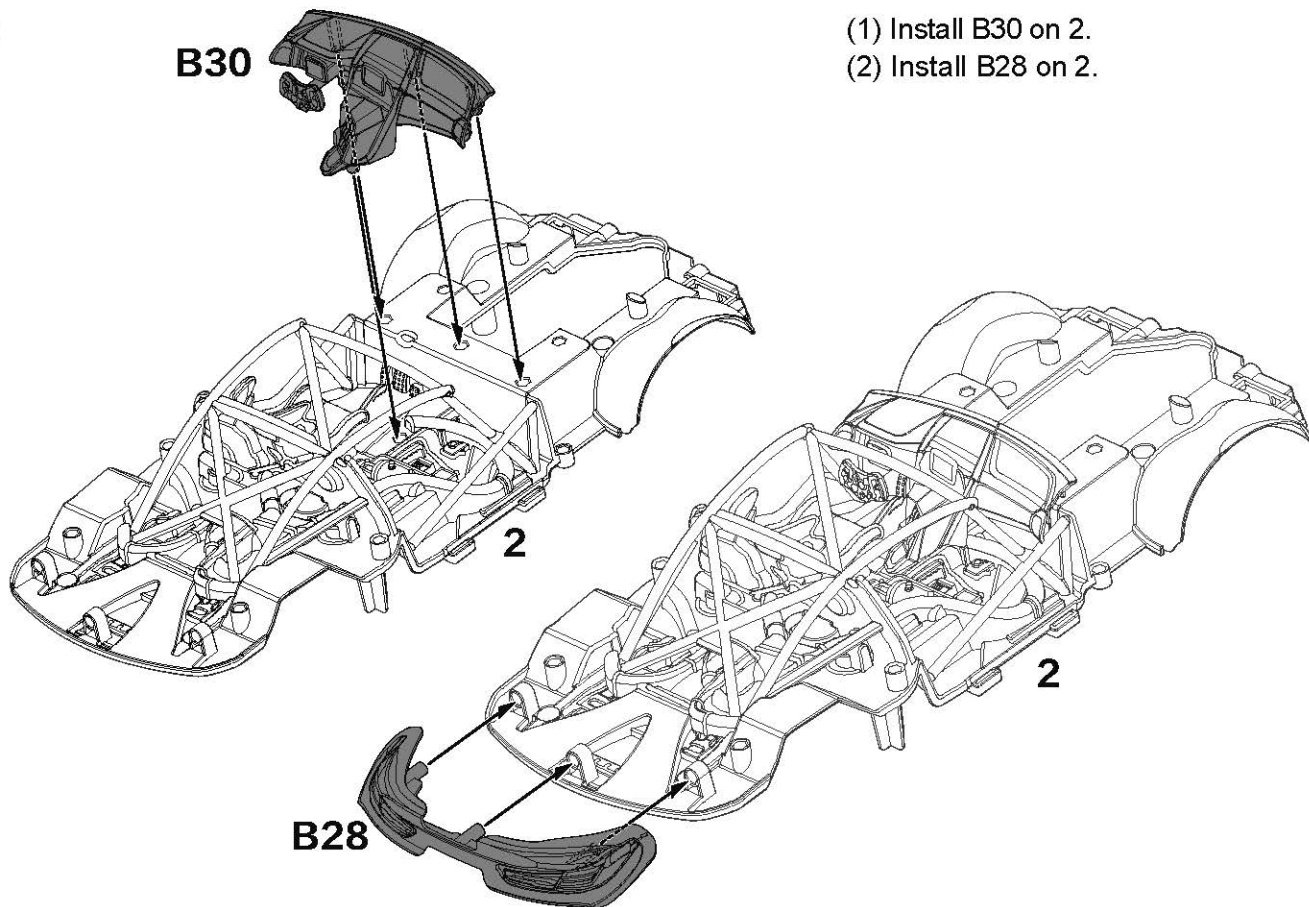
B30**B24****B23**

64

4

B30

- (1) Install B30 on 2.
- (2) Install B28 on 2.

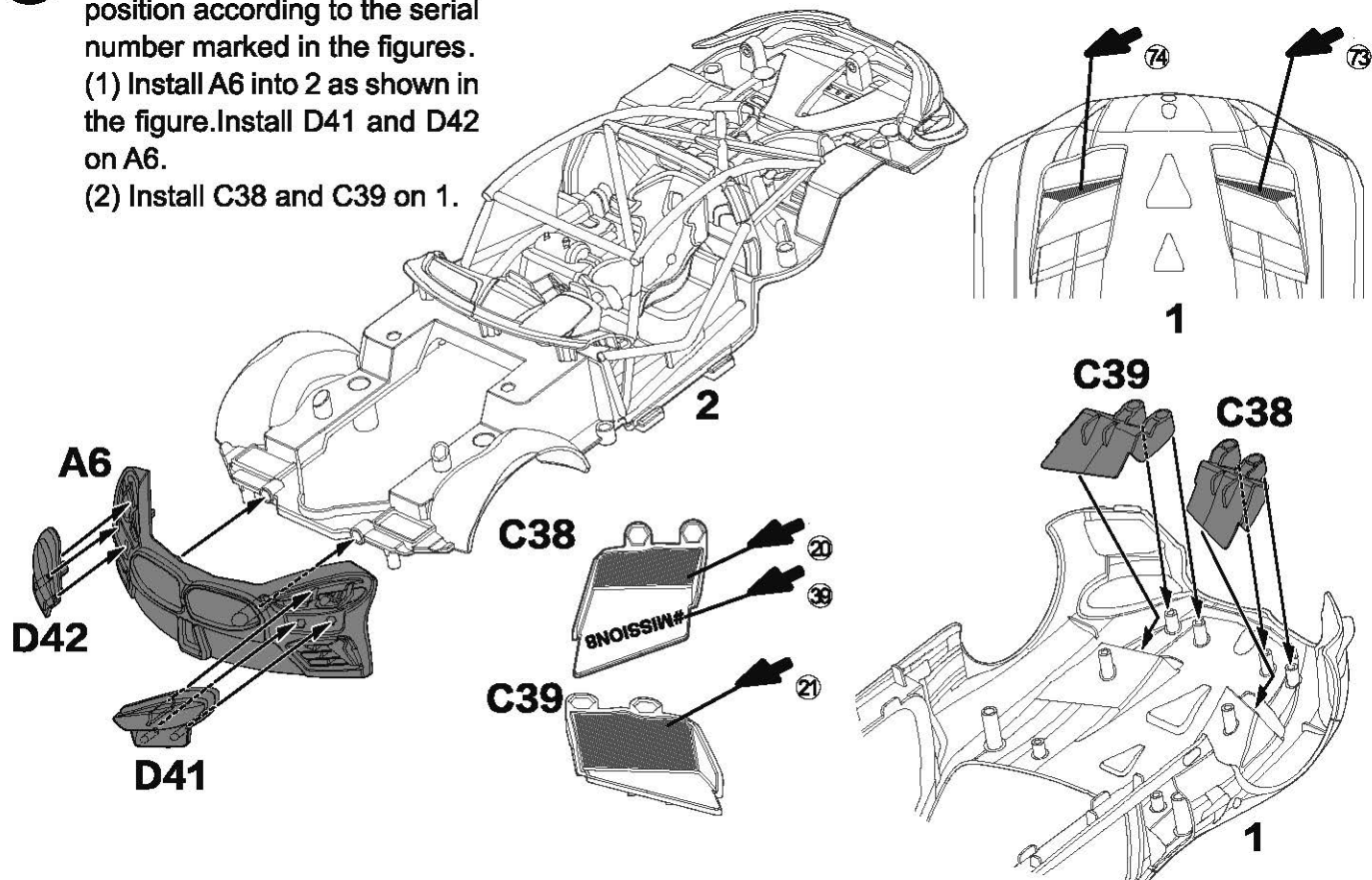


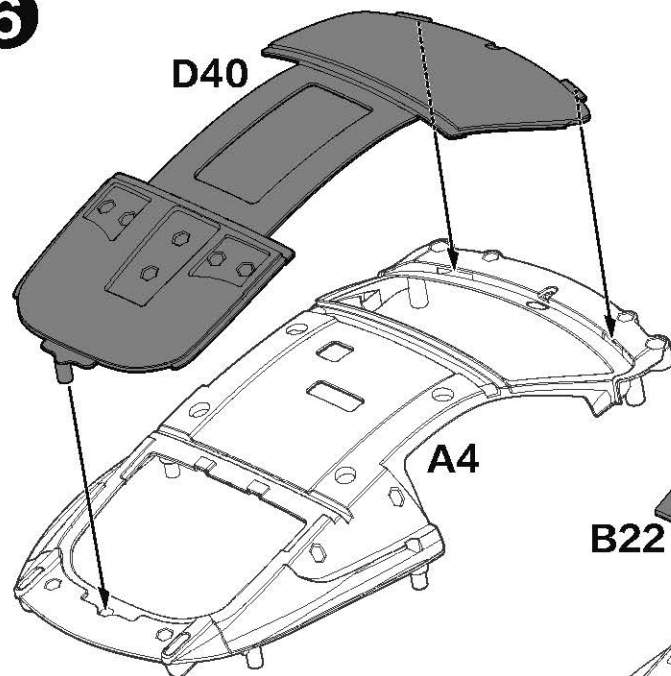
5

Stickers on the corresponding position according to the serial number marked in the figures.

(1) Install A6 into 2 as shown in the figure. Install D41 and D42 on A6.

(2) Install C38 and C39 on 1.

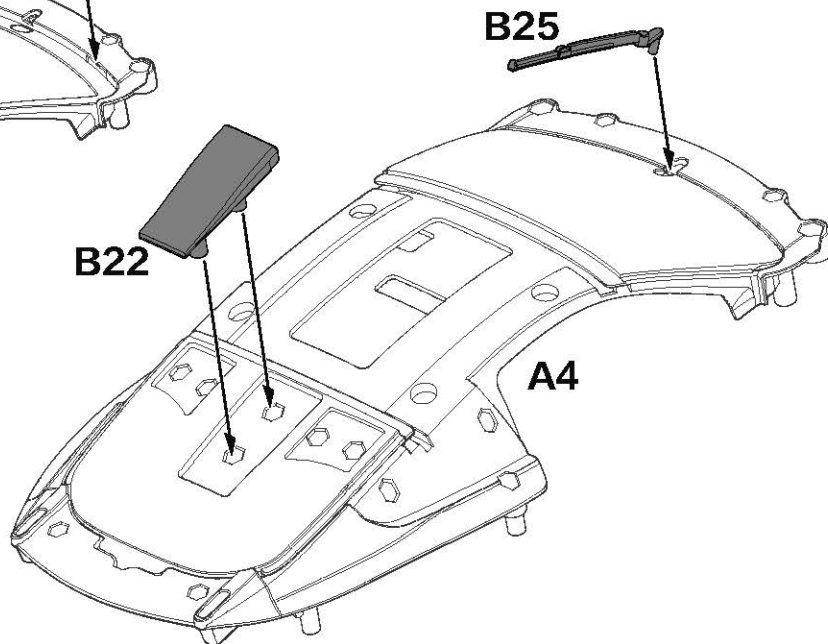


6

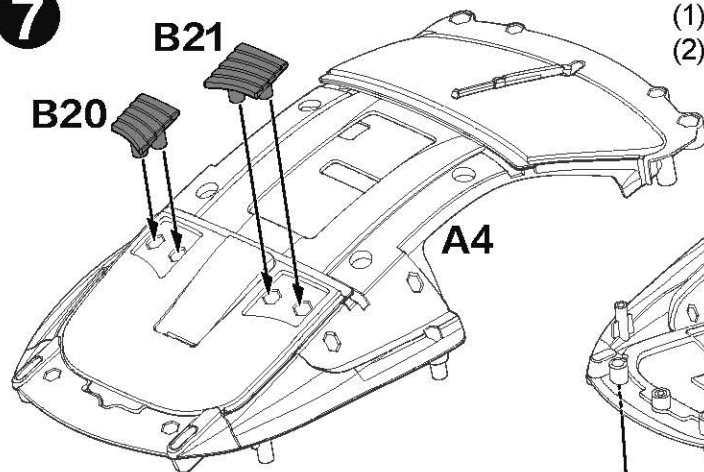
Insert the two bones on the bottom of D40 into the platform of A4, the bottom edge should be smooth, and then press the pillars on the top of D40 into A4.

(1) Install B22 on A4.

(2) Install B25 on A4.

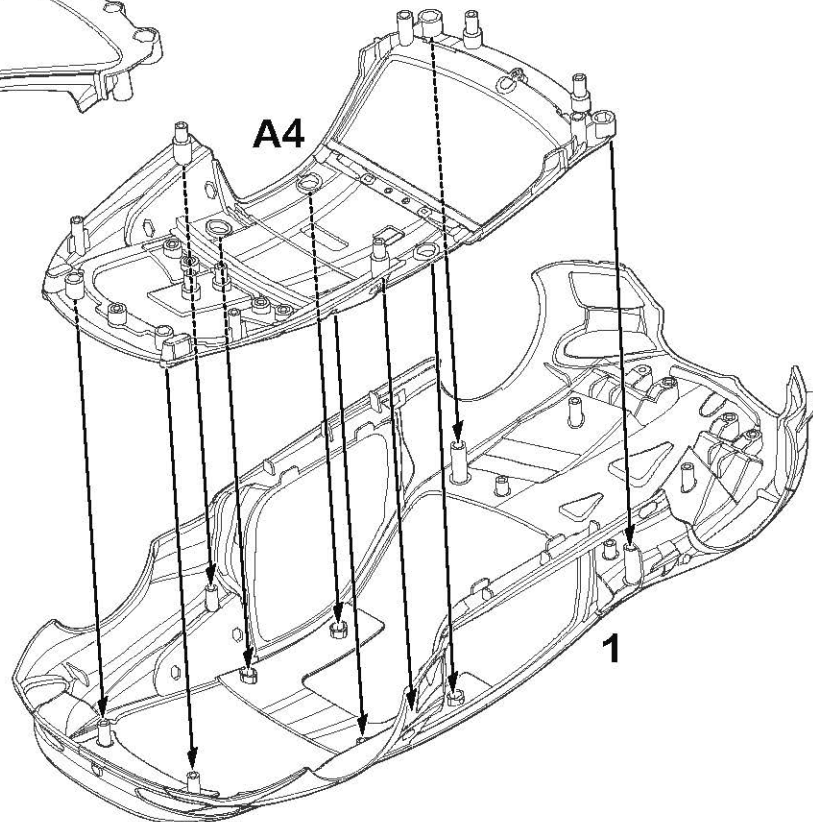


7



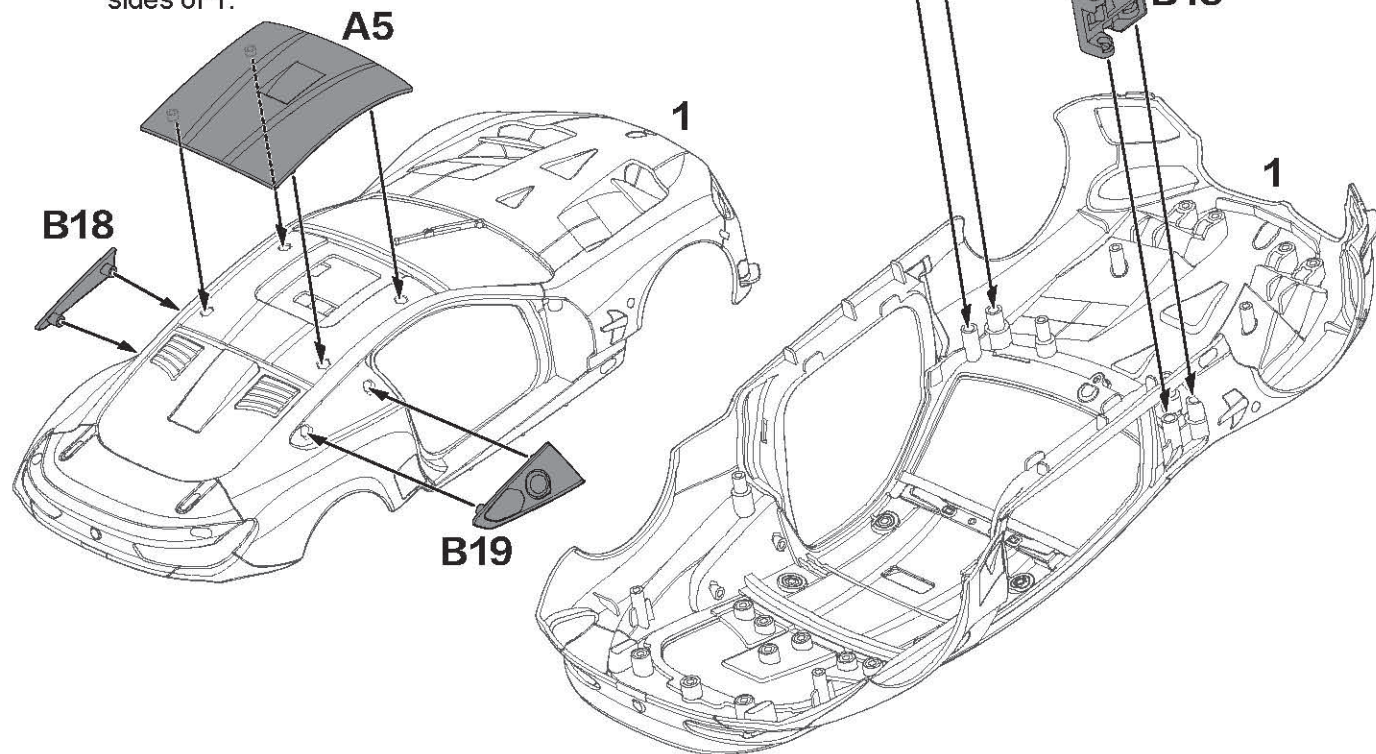
(1) Install B20 and B21 on A4.

(2) Assemble the assembled modules as shown in figure.

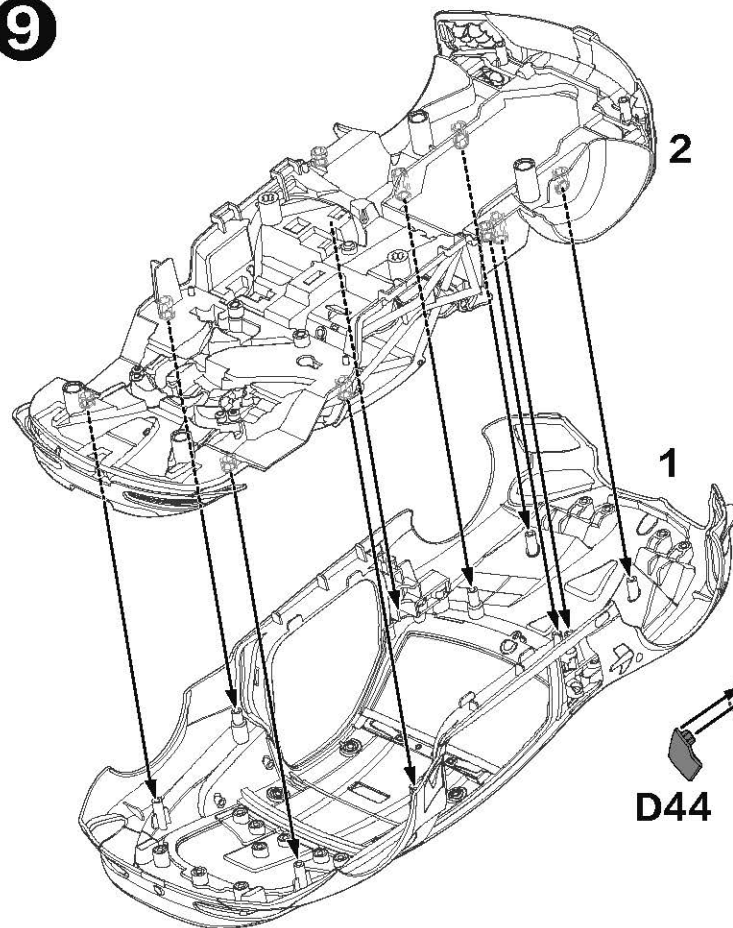


8

- (1) Install A5 into A4 as shown in the figure.
- (2) Install B18 and B19 on the outside of 1 and as shown in the figure.
- (3) Install B12 and B13 respectively on the left and right sides of 1.

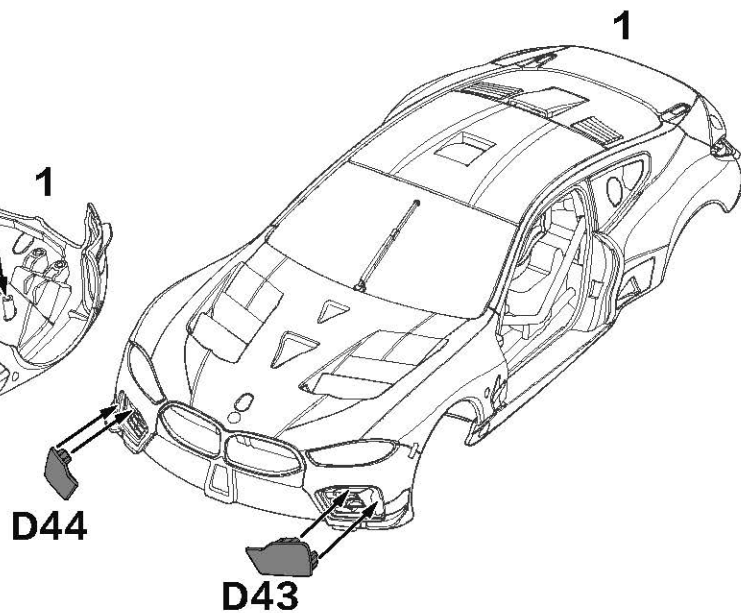


9



(1) Combine the assembled models as shown in the figure.

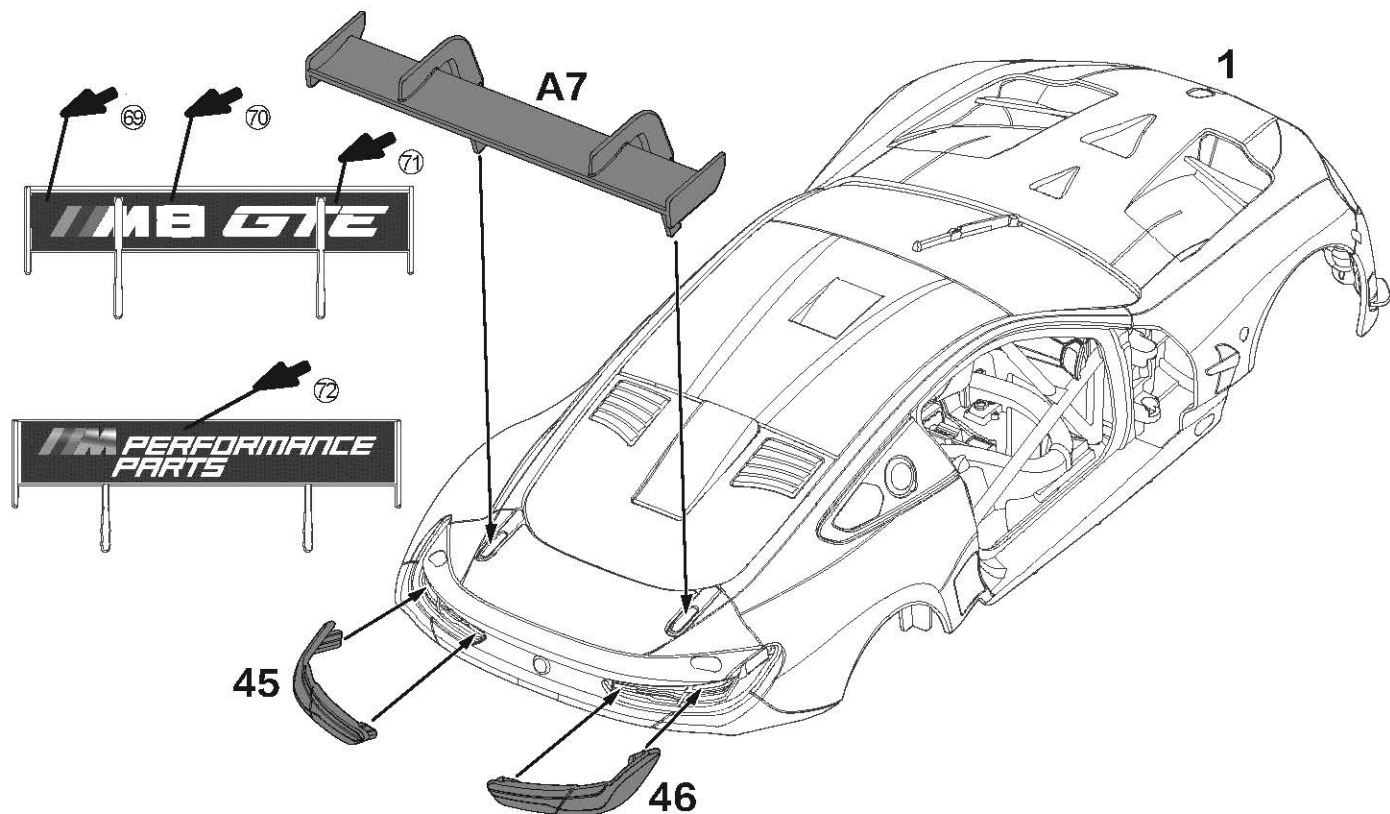
(2) Install D43 and D44 on 1.



10

Please put the stickers on the corresponding position according to the serial number marked in the figures before assembly.

(1) Install A7 on 1. (2) Install 45 and 46 on 1.



11

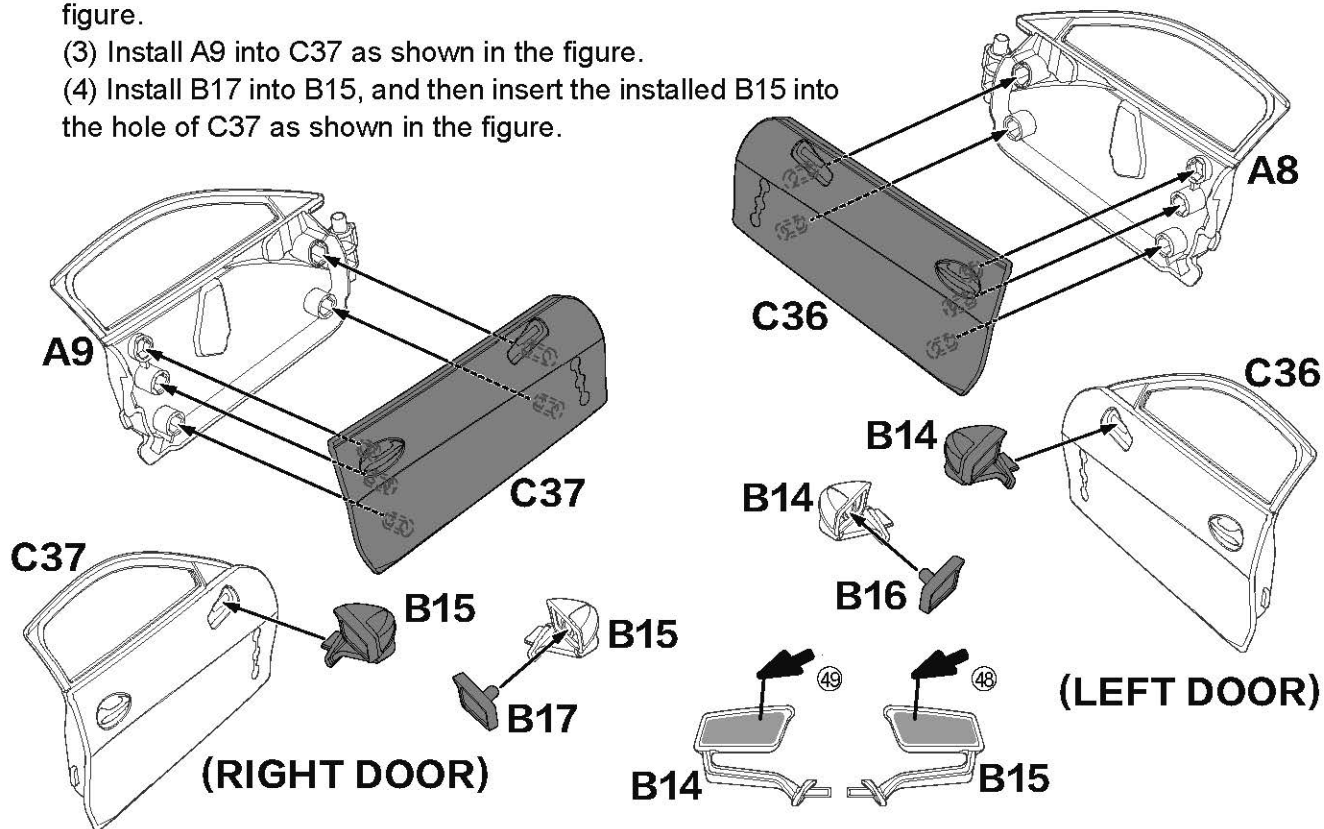
Stickers on the corresponding position according to the serial number marked in the figures .

(1) Install A8 into C36 as shown in the figure.

(2) Install B16 into B14, and then insert the installed B14 into the hole of C36 as shown in the figure.

(3) Install A9 into C37 as shown in the figure.

(4) Install B17 into B15, and then insert the installed B15 into the hole of C37 as shown in the figure.



- 12** Insert the upper bone of A8 and A9 into the gap between 1 and the chassis, Please check if the door can be open and close freely after assembly.

