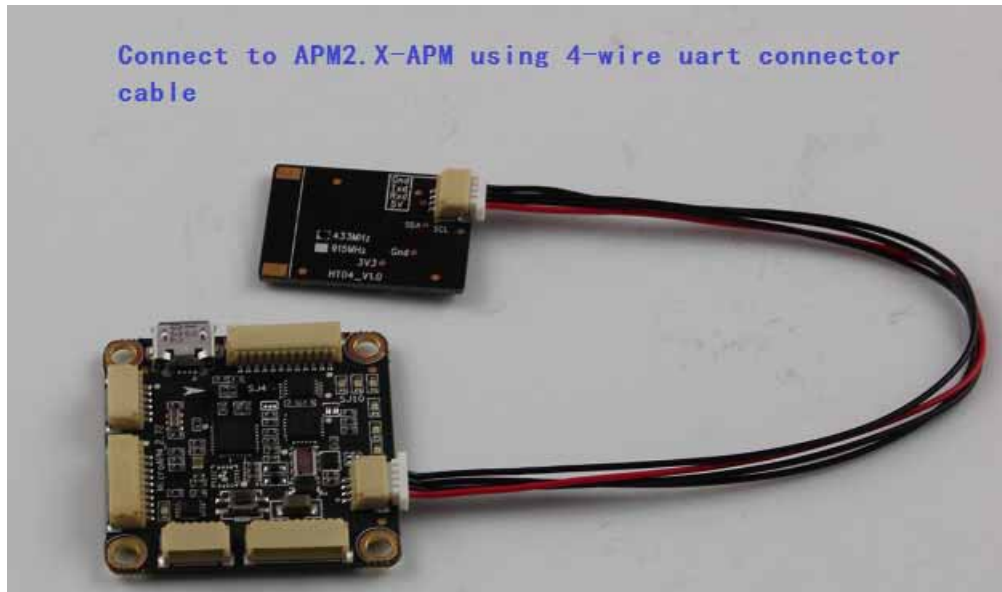


HT0X User Manual

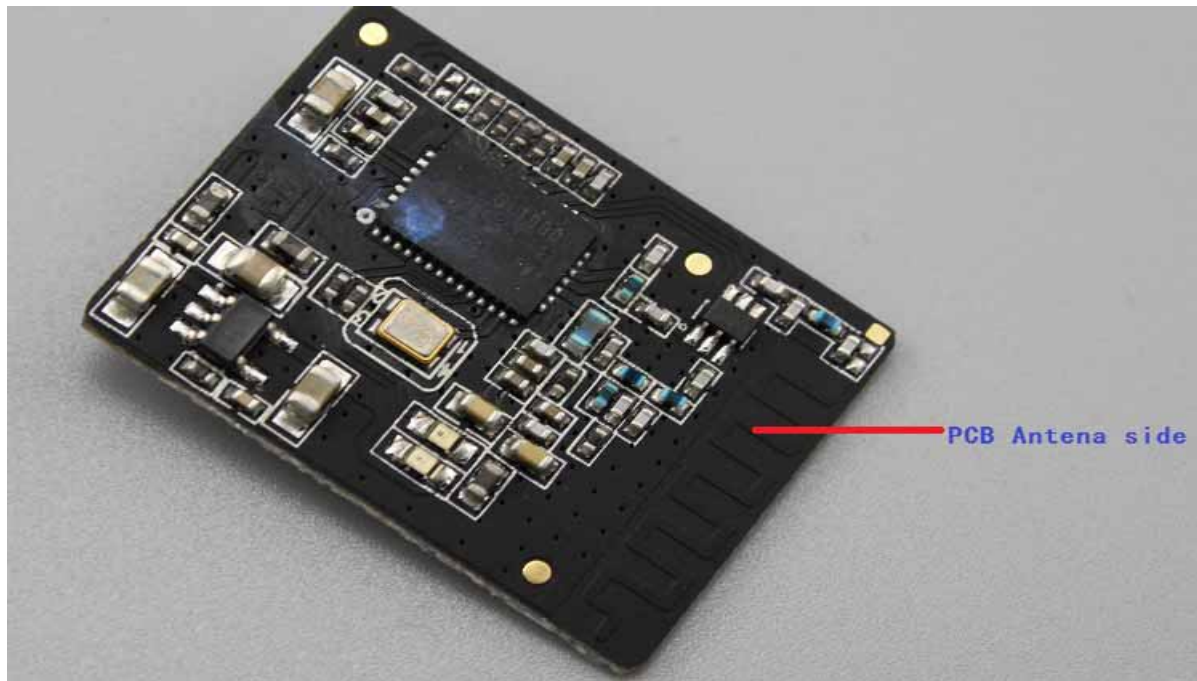
GETTING STARTED

HT0X Radios provide an air-to-ground data link between the autopilot and your ground station laptop or tablet. Follow this guide to install the radios on your plane, copter, or rover. Just mount and connect to view real-time data from your drone.

CONNECT TO APM2.X-APM FLIGHT CONTROLLER

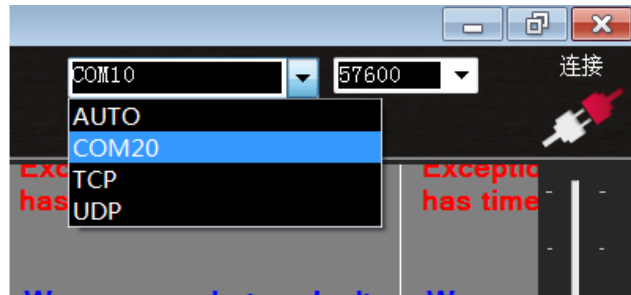


MOUNT



Mount the HT0X-A air module securely to your vehicle keeping the antenna clear of any propellers or moving components. Ensure that the antenna is oriented vertically for maximum range.

CONNECT TO MISSION PLANNER



Use the micro-USB cable to connect the ground module to your laptop. In Mission Planner and APM Planner ground station applications, select the communication option that shows COM, set the rate to 57600, and select Connect. The radio will not connect unless the vehicle is powered. Use the Flight Data screen to view your vehicle's status and control missions in flight.

CONNECT TO TABLET



Connect the HT0X-G ground module to your tablet using the Android adapter cable. Connect the red end to the tablet and the black end to the radio. In DroidPlanner or Andropilot, select Connect.

SETTINGS

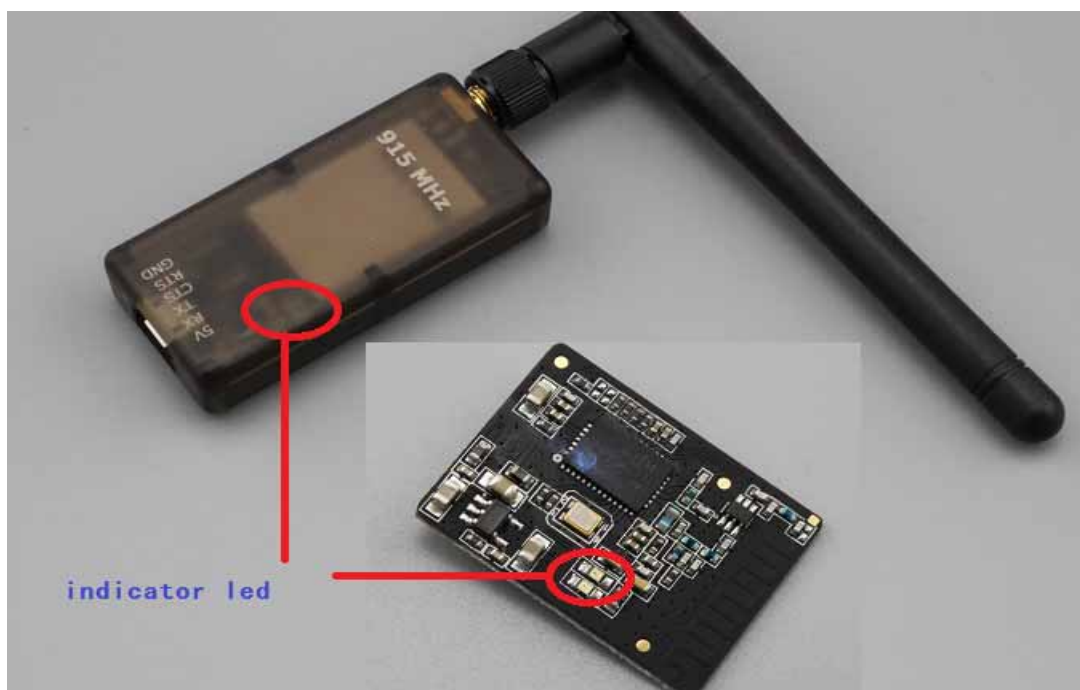
To change the radio settings in the mission planner, connect the radio to your computer, but do not select Connect. Radios can only be configured while unconnected to MAVLink. Select Initial Setup, 3DR Radio, and Load Settings to configure the radios.





All settings should be the same for both modules. Ensure that the Net ID setting is identical on each radio to enable pairing. Select Save Settings to apply settings. For flying with friends, make sure your Net IDs do not conflict.

Local				Remote			
Version	SiK 1.9 on HM-TRP		FREQ_915	DEVICE_ID	HM_TRP		
RSSI	L/R RSSI: 24/0 L/R noise: 42/0 pkts: 0 txe=0 rxe=0 sbx=0 srx=0 ecc=0/0 temp=-276 dco=0						
Format	25	Min Freq	915000	Format		Min Freq	895000
Baud	57	Max Freq	928000	Baud		Max Freq	895000
Air Speed	64	# of Channels	50	Air Speed		# of Channels	
Net ID	25	Duty Cycle	100	Net ID	0	Duty Cycle	

Use the configuration options on this screen to apply the correct airspace regulation requirements for your area. You are responsible for complying with all airspace regulations in your area, including frequency restrictions, power levels, and licenses.

LED MEANINGS



	Blinking green Searching for paired radio		Blinking red Transmitting data
	Solid green Link established with paired radio		Solid red Firmware update mode

FCC Warning

This device complies with Part 15 of the FCC Rules. Operation is subject to the following two conditions:

(1) this device may not cause harmful interference, and (2) this device must accept any interference received, including interference that may cause undesired operation.

changes or modifications not expressly approved by the party responsible for compliance could void the user's authority to operate the equipment.

NOTE: This equipment has been tested and found to comply with the limits for a Class B digital device, pursuant to Part 15 of the FCC Rules. These limits are designed to provide reasonable protection against harmful interference in a residential installation. This equipment generates, uses and can radiate radio frequency energy and, if not installed and used in accordance with the instructions, may cause harmful interference to radio communications. However, there is no guarantee that interference will not occur in a particular installation. If this equipment does cause harmful interference to radio or television reception, which can be determined by turning the equipment off and on, the user is encouraged to try to correct the interference by one or more of the following measures:

- Reorient or relocate the receiving antenna.
- Increase the separation between the equipment and receiver.
- Connect the equipment into an outlet on a circuit different from that to which the receiver is connected.
- Consult the dealer or an experienced radio/TV technician for help.

For HTOX-Air Module:

If the FCC identification number is not visible when the module is installed inside another device, then the outside of the device into which the module is installed must also display a label referring to the enclosed module. This exterior label can use wording such as the following:

“Contains Transmitter Module FCC ID: 2AEK9-HT0XA” or “Contains FCC ID: 2AEK9-HT0XA”

This device complies with part 15 of the FCC Rules. Operation is subject to the following two conditions: (1) This device may not cause harmful interference, and (2) this device must accept any interference received, including interference that may cause undesired operation.

Please describe the following warning to the manual.

FCC CAUTION

Changes or modifications not expressly approved by the party responsible for compliance could void the user's authority to operate the equipment.

This transmitter must not be co-located or operated in conjunction with any other antenna or transmitter.

This LMA is tested and approved as standalone configuration, additional evaluation may be required for any system integrated this radio module.