

## Interior view of EUT

### Internal Photos



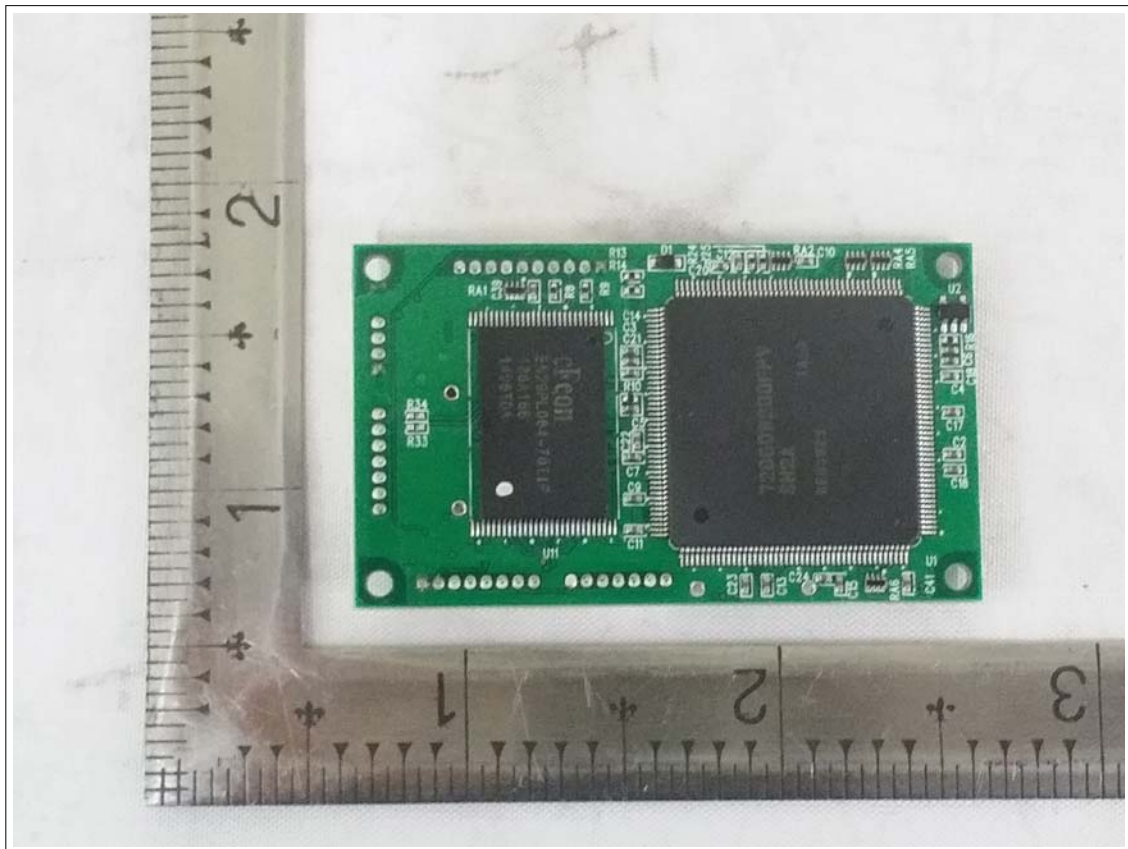
**View of Main PCB(Top)**



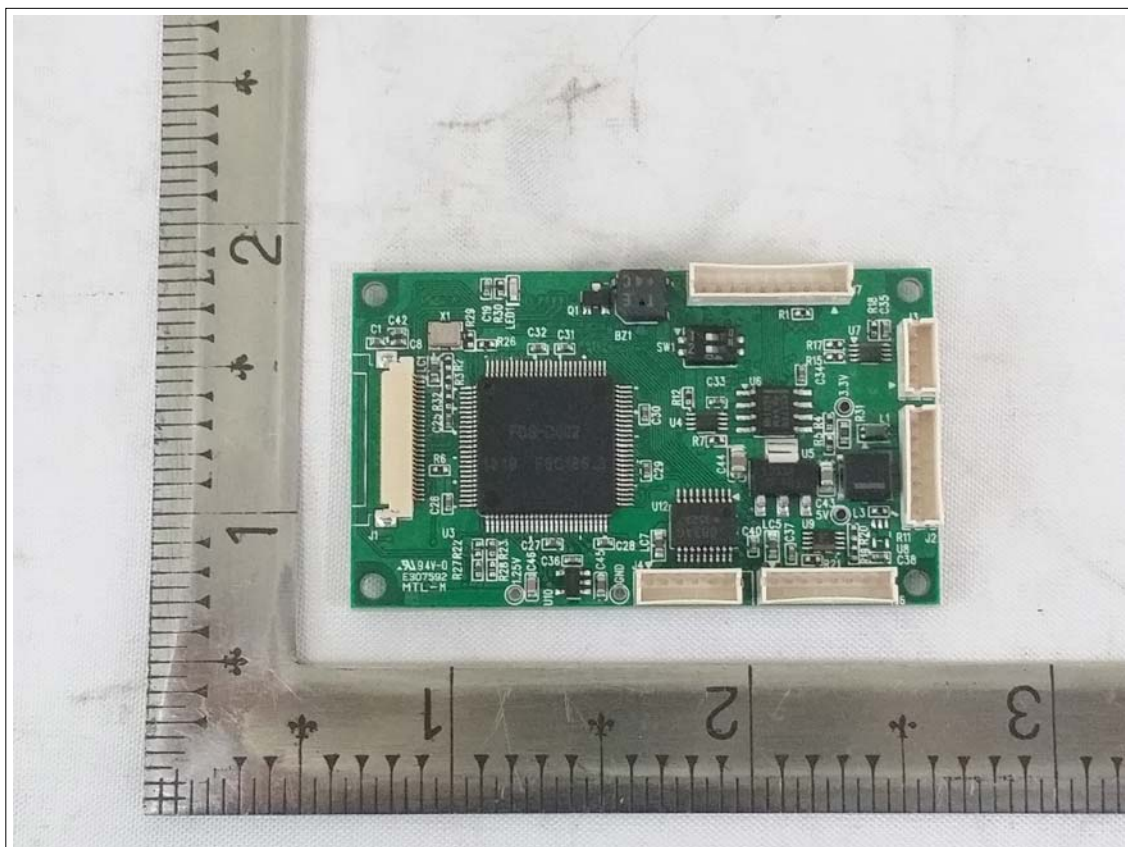
**View of Main PCB(Bottom)**



### View of Module PCB(Top)

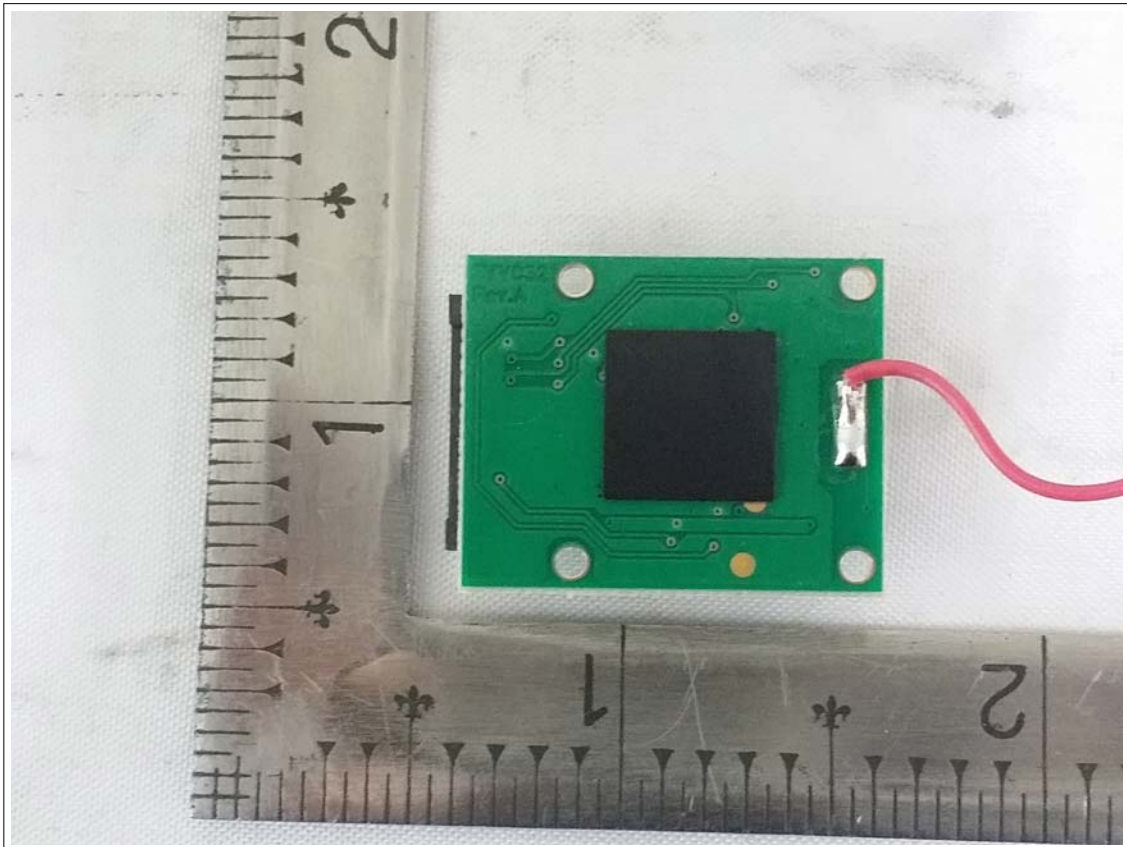


### View of Module PCB(Bottom)

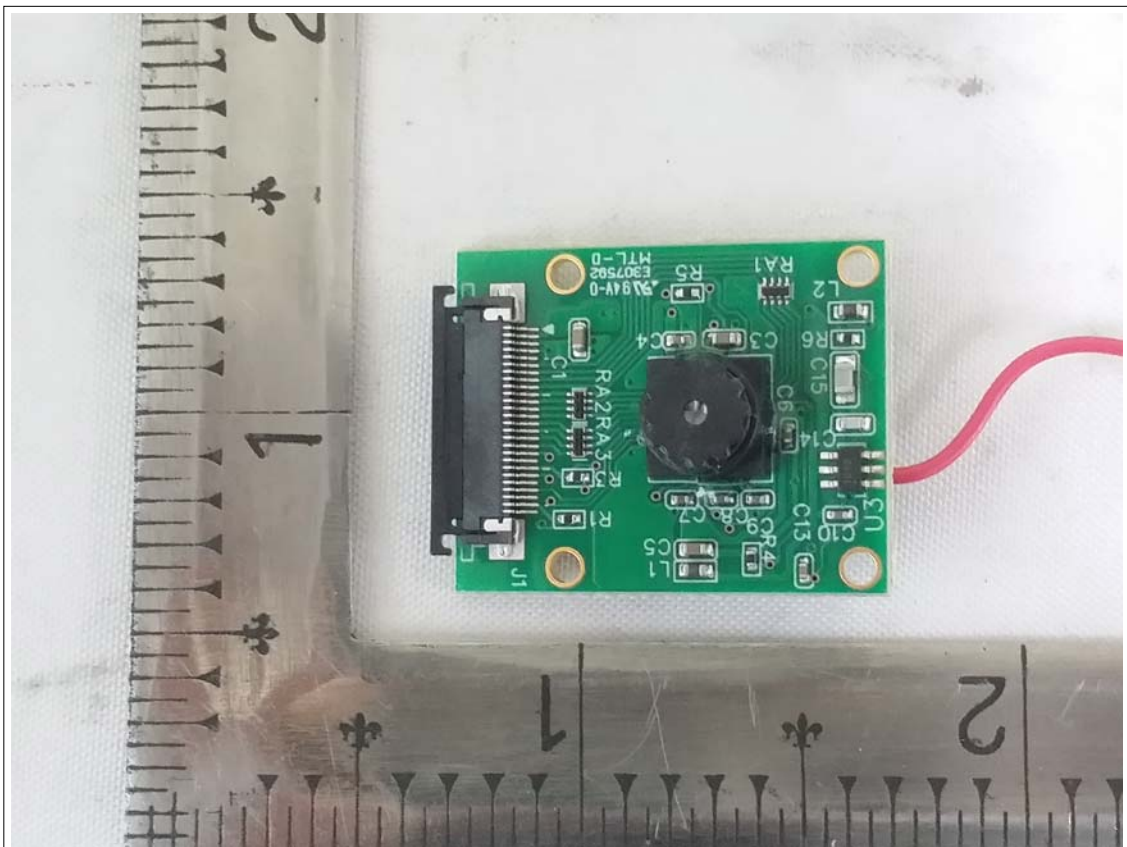




**View of Camera PCB(Top)**



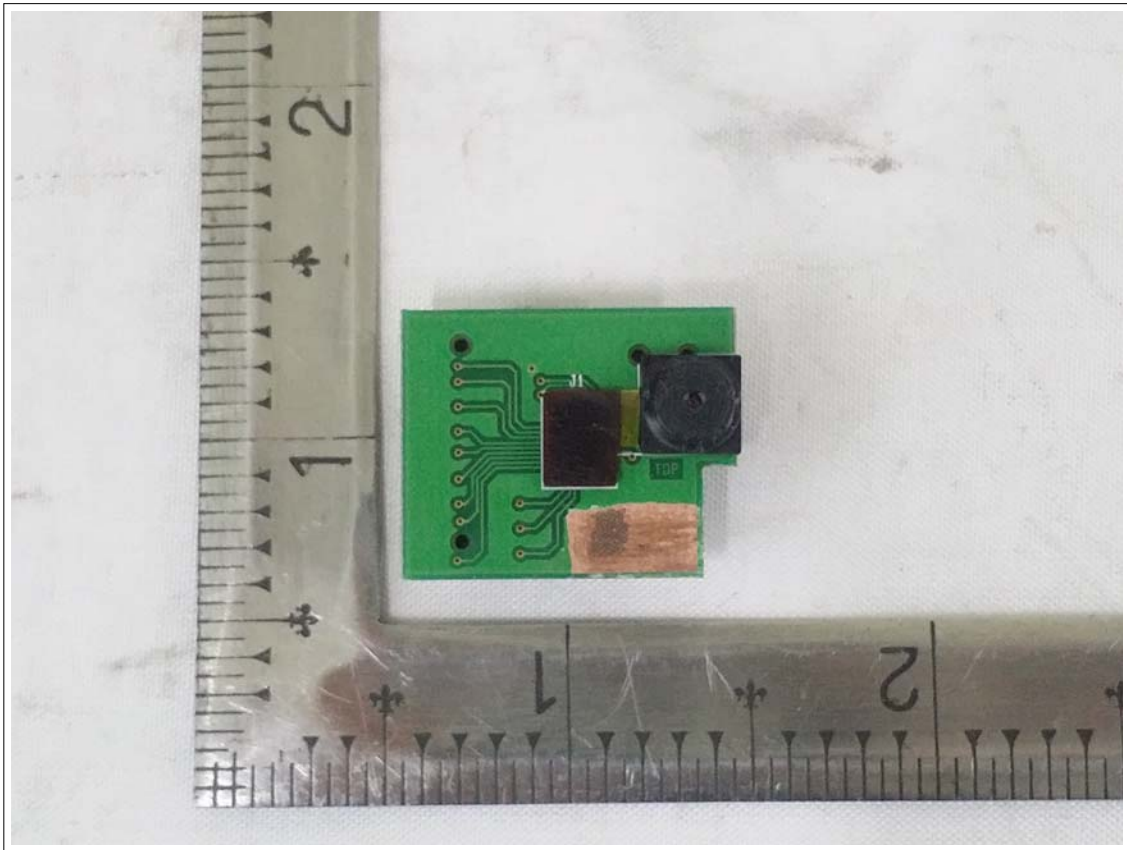
**View of Camera PCB(Bottom)**



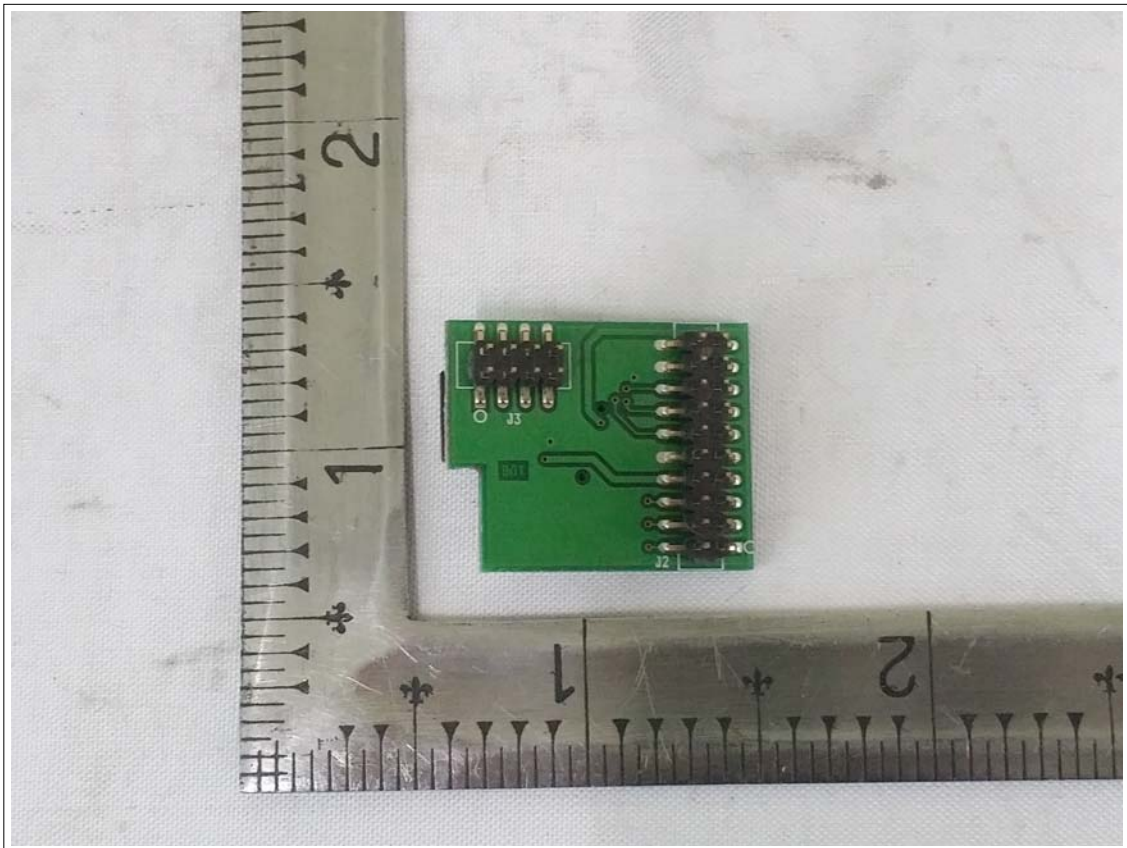
A photograph of a small green printed circuit board (PCB) with various electronic components, including resistors and a microcontroller, and a bundle of red, black, and white wires. A metal ruler is placed vertically next to the PCB for scale, showing measurements in centimeters. The PCB is populated with several components: a microcontroller (labeled 'AT89C51'), several resistors (labeled R1, R2, R3, R4, R5, R6), and other smaller components. The wires are bundled together and extend from the top of the board. The ruler indicates the PCB is approximately 3 cm long.



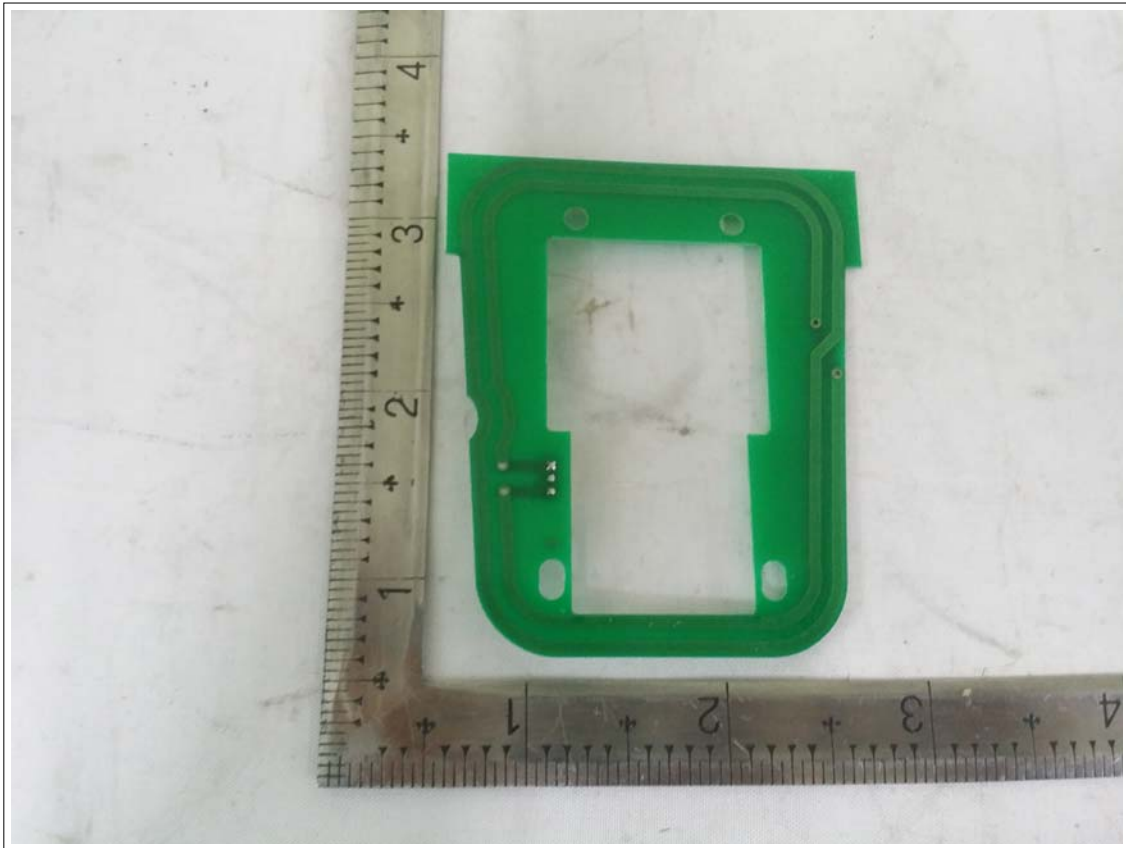
**View of Camera1 PCB(Top)**



**View of Camera1 PCB(Bottom)**



**View of Antenna PCB(TOP)**



**View of Antenna PCB(Bottom)**

