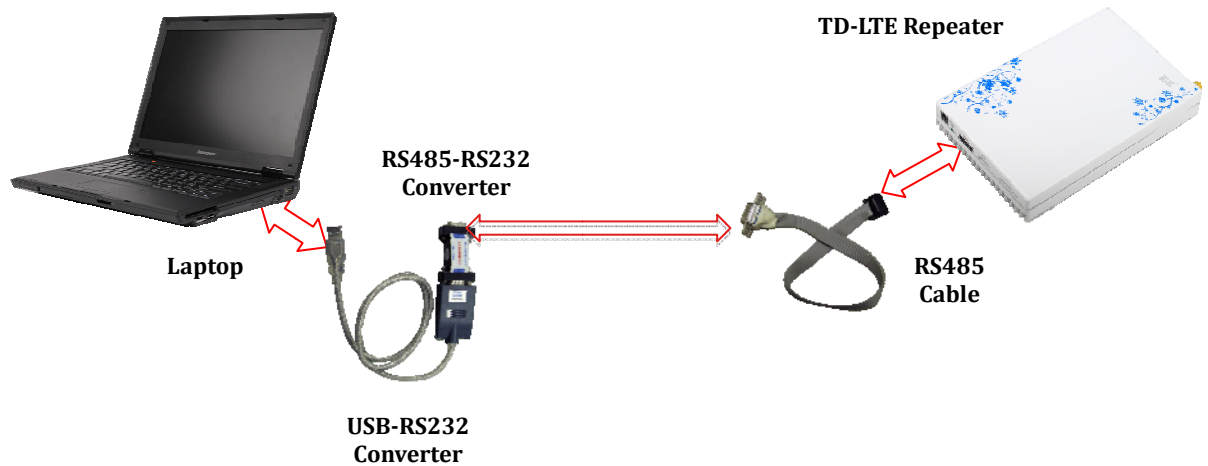


1 Hardware Connection



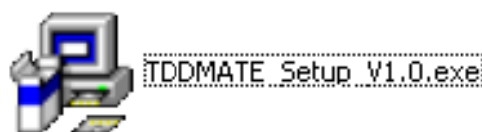
Connect RS485 Port of TD-LTE Pico Repeater with RS232 port of laptop via RS485 cable and RS485-RS232 converter. If the laptop doesn't have RS232 port, a USB-RS232 converter can be used.

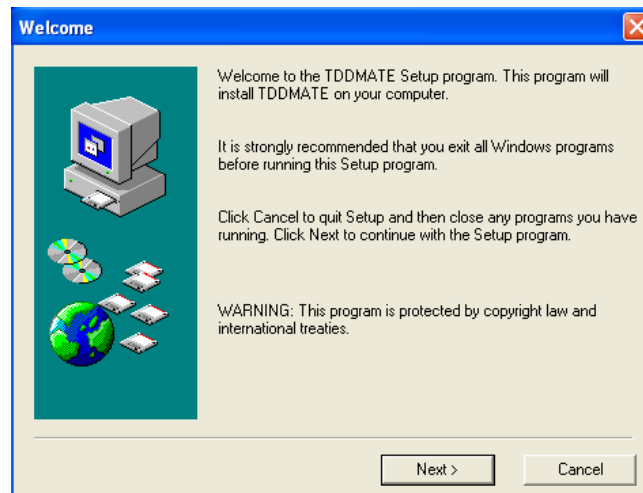
2 System Requirements

- Operating System: Windows XP/2007/2008
- CPU: Intel, Pentium, Pentium Pro, Pentium II or higher processor with minimum speed of 1GHz.
- Memory: At least 1GB RAM and 2 GB is suggested to satisfy with minimum requirements for operating system software.
- RS232 port: At least 1 serial COM port or USB-RS232 converter, default baud rate 9600bps.

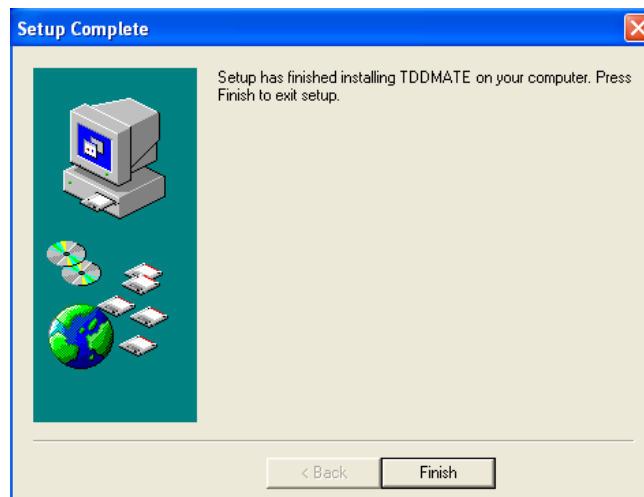
3 Software Installation

Click on *TDDMATE_Setup_V4.3.exe* as following:





Click *Next* to install the software.



Click *Finish* to finish the installation.

4 Log on

Click shortcut *TDDMATE* on the desktop as following:




Default *User Name*: admin

Default *Password*: admin, click *Enter* to log on



Administrator: has the right to set and query information. The administrator username and password are available to set from Tool / Management sub-menu.

After successful logon, it will enter into the main windows of TDDMATE LCT Software V2.0, and shows the default page of “*Basic Info*”. The main window includes six sub windows, such as “*Basic Info*”, “*Setup Wizard*”, “*Alarm Info*”, “*Timeslot Set*”, “*Advance*” and “*Hardware*”. Please refer to “Figure 2”. Click “” button on the top right corner of the main window to log out.

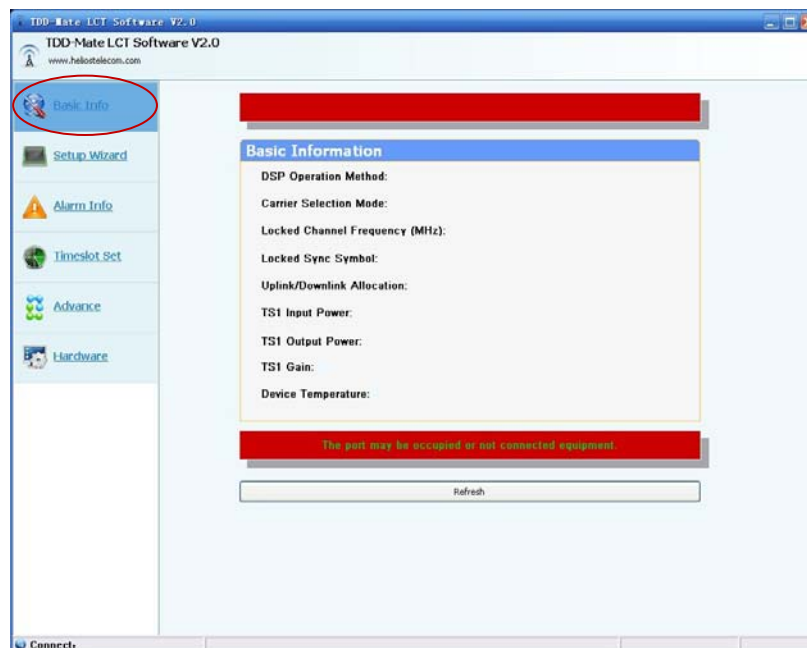
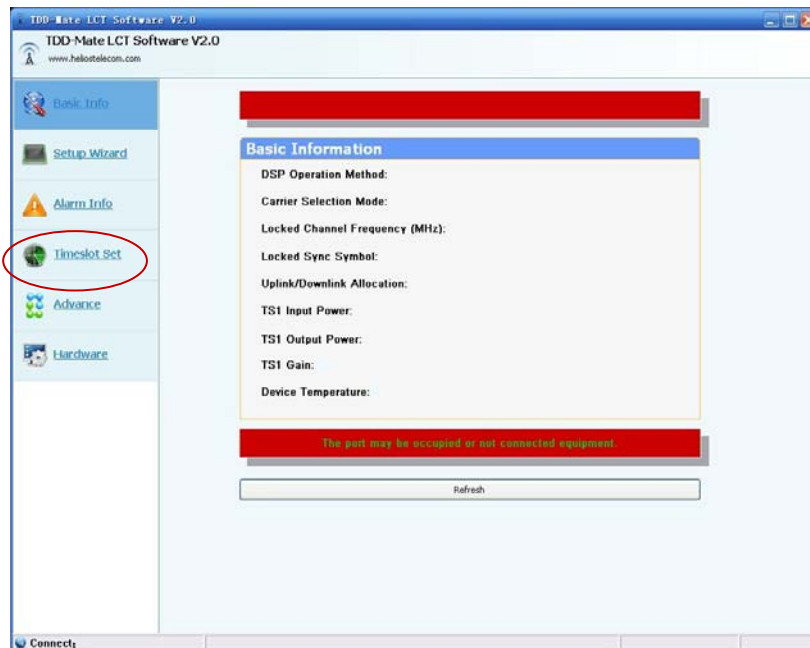


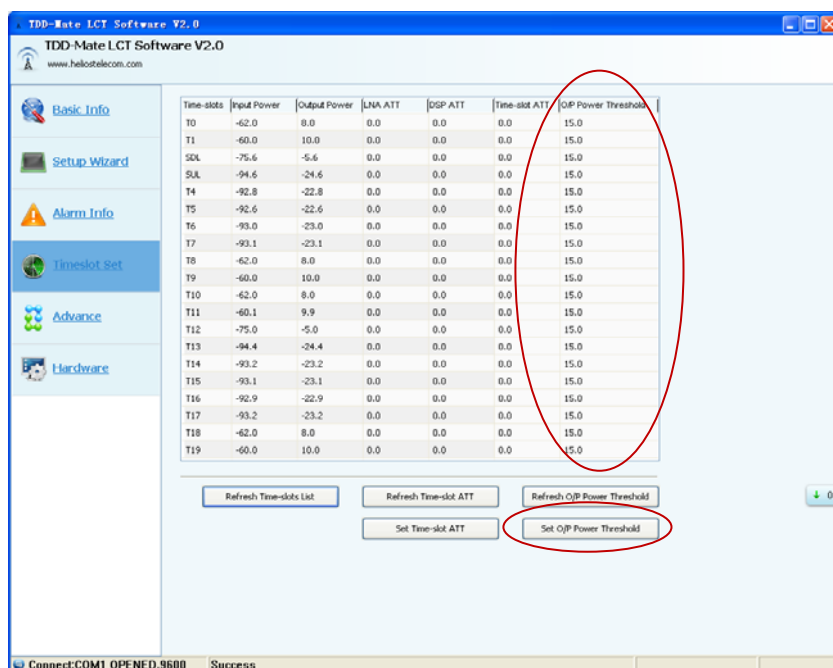
Figure 2 Main Window

5 How to set the Output Power Threshold for each timeslot

Open “Timeslot Set” Page as below picture:



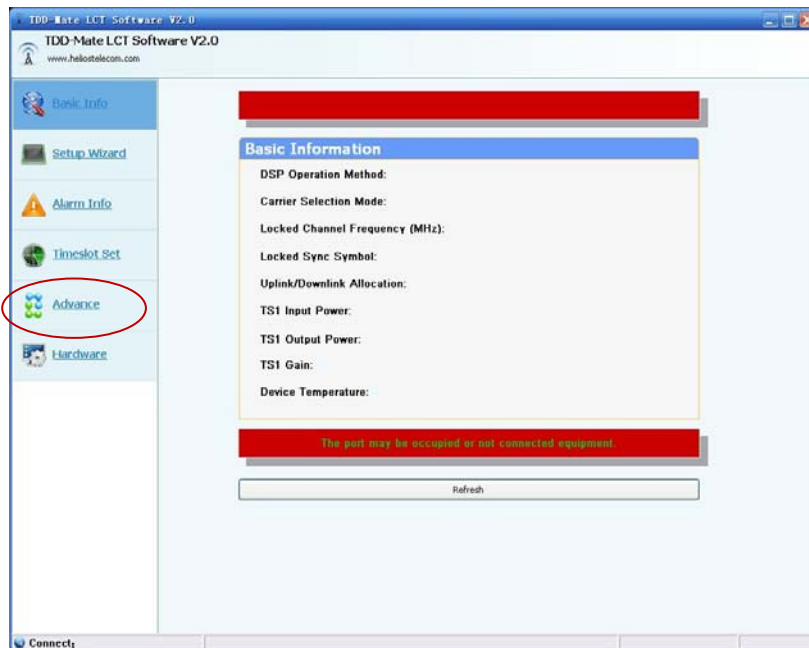
Then you will see below “Timeslot Set” page as below, the last row in the table just is for Output Power Threshold as marked by red circle.



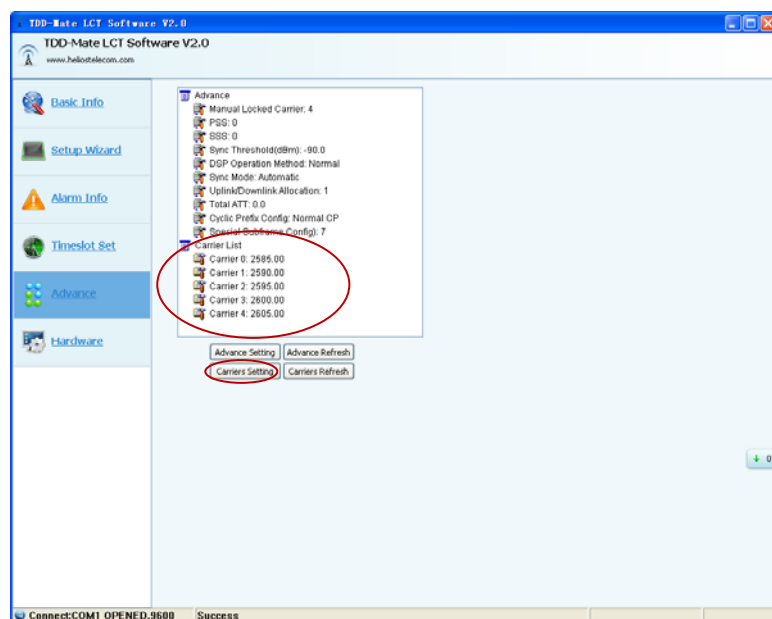
You can directly fill corresponding value for max output power as you want, and click “Set O/P Power Threshold” button to save setting. Please note that the valid value range is 0 to 15dBm.

6 How to set frequency for working carrier

Open “Advance” Page as below picture:



Then you will see below “Advance” page as below:



There are default 5 carriers setting in above carrier list, generally the repeater will automatically scan on-air signals and locked one strongest carrier for amplify. You can also revise the above frequency value in carrier list to define the center frequency of each carrier (each carrier is 20MHz channel bandwidth). The valid frequency value is 2570-2620MHz.

If you do not want auto scan feature and just only lock expected carrier, you can set frequency value of rest 4 carriers as 0 and just leave the expected carrier in the carrier list, and click “Carrier Setting” button to save setting.