

TEST REPORT

FCC ID: 2AEHH-COROS

Product: Smart Cycling Helmet

Model No.: OMNI

Additional Model: N/A

Trade Mark: COROS

Report No.: TCT171110E015

Issued Date: Nov. 14, 2017

Issued for:

Coros Wearables Inc.

**No. 1844 GRAHAM LANE, SANTA CLARA, CA 95050,
United States**

Issued By:

Shenzhen Tongce Testing Lab.

**1B/F., Building 1, Yibaolai Industrial Park, Qiaotou, Fuyong, Baoan District,
Shenzhen, Guangdong, China**

TEL: +86-755-27673339

FAX: +86-755-27673332

Note: This report shall not be reproduced except in full, without the written approval of Shenzhen Tongce Testing Lab.

This document may be altered or revised by Shenzhen Tongce Testing Lab. personnel only, and shall be noted in the revision section of the document. The test results in the report only apply to the tested sample.

TABLE OF CONTENTS

1. Test Certification	3
2. Test Result Summary	4
3. EUT Description.....	5
4. Genera Information.....	7
4.1. Test Environment and Mode	7
4.2. Description of Support Units	8
5. Facilities and Accreditations	9
5.1. Facilities	9
5.2. Location.....	9
5.3. Measurement Uncertainty	9
6. Test Results and Measurement Data	10
6.1. Antenna Requirement	10
6.2. Conducted Emission.....	11
6.3. Radiated Emission Measurement.....	15
6.4. 20dB Occupied Bandwidth.....	25
Appendix A: Photographs of Test Setup	
Appendix B: Photographs of EUT	

1. Test Certification

Product:	Smart Cycling Helmet
Model No.:	OMNI
Additional Model:	N/A
Trade Mark:	COROS
Applicant:	Coros Wearables Inc.
Address:	No. 1844 GRAHAM LANE, SANTA CLARA, CA 95050, United States
Manufacturer:	Coros Wearables Inc.
Address:	No. 1844 GRAHAM LANE, SANTA CLARA, CA 95050, United States
Date of Test:	Oct. 26 - 30, 2017
Applicable Standards:	FCC CFR Title 47 Part 15 Subpart C Section 15.249

The above equipment has been tested by Shenzhen Tongce Testing Lab. and found compliance with the requirements set forth in the technical standards mentioned above. The results of testing in this report apply only to the product/system, which was tested. Other similar equipment will not necessarily produce the same results due to production tolerance and measurement uncertainties.

Tested By:



Garen

Date:

Oct. 30, 2017

Reviewed By:



Joe Zhou

Date:

Nov. 14, 2017

Approved By:



Tomsin

Date:

Nov. 14, 2017

2. Test Result Summary

Requirement	CFR 47 Section	Result
Antenna Requirement	§15.203	PASS
AC Power Line Conducted Emission	§15.207	PASS
Field Strength of Fundamental	§15.249 (a)	PASS
Spurious Emissions	§2.1053 §15.249 (a) (d)/ §15.209	PASS
Band Edge	§2.1053 §15.249 (d)/ §15.205	PASS
20dB Occupied Bandwidth	§2.1049 §15.215 (c)	PASS

Note:

1. Pass: Test item meets the requirement.
2. Fail: Test item does not meet the requirement.
3. N/A: Test case does not apply to the test object.
4. The test result judgment is decided by the limit of test standard.

3. EUT Description

Product:	Smart Cycling Helmet
Model No.:	OMNI
Additional Model:	N/A
Trade Mark:	COROS
Operation Frequency:	2402MHz - 2480MHz
Number of Channel:	79
Modulation Technology:	GFSK, Pi/4QPSK, 8DPSK
Antenna Type:	PCB antenna
Antenna Gain:	2.0dBi
Power Supply:	Battery: DC 3.7V, 700mAh, 2.59Wh

Operation Frequency each of channel for GFSK, $\pi/4$ -DQPSK, 8DPSK

Channel	Frequency	Channel	Frequency	Channel	Frequency	Channel	Frequency
0	2402MHz	20	2422MHz	40	2442MHz	60	2462MHz
1	2403MHz	21	2423MHz	41	2443MHz	61	2463MHz
...
10	2412MHz	30	2432MHz	50	2452MHz	70	2472MHz
11	2413MHz	31	2433MHz	51	2453MHz	71	2473MHz
...
18	2420MHz	38	2440MHz	58	2460MHz	78	2480MHz
19	2421MHz	39	2441MHz	59	2461MHz	-	

Remark: Channel 0, 39 & 78 have been tested for GFSK, $\pi/4$ -DQPSK, 8DPSK modulation mode.

Note:

In section 15.31(m), regards to the operating frequency range over 10 MHz, the Lowest frequency, the middle frequency, and the highest frequency of channel were selected to perform the test, and the selected channel see below:

Channel	Frequency
The lowest channel	2402MHz
The middle channel	2441MHz
The Highest channel	2480MHz

4. Genera Information

4.1. Test Environment and Mode

Operating Environment:	
Temperature:	25.0 °C
Humidity:	54 % RH
Atmospheric Pressure:	1010 mbar
Test Mode:	
Engineering mode:	Keep the EUT in continuous transmitting by select channel
<p>The sample was placed (0.8m below 1GHz, 1.5m above 1GHz) above the ground plane of 3m chamber. Measurements in both horizontal and vertical polarities were performed. During the test, each emission was maximized by: having the EUT continuously working, investigated all operating modes, rotated about all 3 axis (X, Y & Z) and considered typical configuration to obtain worst position, manipulating interconnecting cables, rotating the turntable, varying antenna height from 1m to 4m in both horizontal and vertical polarizations. The emissions worst-case are shown in Test Results of the following pages.</p>	

Per-test mode.			
<p>We have verified the construction and function in typical operation, The EUT was placed on three different polar directions; i.e. X axis, Y axis, Z axis. which was shown in this test report and defined as follows:</p>			
Axis	X	Y	Z
Field Strength(dBuV/m)	94.56	95.12	93.43
Final Test Mode:			
<p>The EUT was tested in GFSK, $\pi/4$QPSK, 8DPSK modulation, and found the GFSK modulation is the worst case.</p> <p>According to ANSI C63.4 standards, the test results are both the "worst case" and "worst setup": Y axis (see the test setup photo)</p>			

4.2. Description of Support Units

The EUT has been tested as an independent unit together with other necessary accessories or support units. The following support units or accessories were used to form a representative test configuration during the tests.

Equipment	Model No.	Serial No.	FCC ID	Trade Name
USB Charger	A1299	N/A	/	/

Note:

1. All the equipment/cables were placed in the worst-case configuration to maximize the emission during the test.
2. Grounding was established in accordance with the manufacturer's requirements and conditions for the intended use.

5. Facilities and Accreditations

5.1. Facilities

The test facility is recognized, certified, or accredited by the following organizations:

- FCC - Registration No.: 645098

Shenzhen Tongce Testing Lab

The 3m Semi-anechoic chamber has been registered and fully described in a report with the (FCC) Federal Communications Commission. The acceptance letter from the FCC is maintained in our files.

- IC - Registration No.: 10668A-1

The 3m Semi-anechoic chamber of Shenzhen TCT Testing Technology Co., Ltd. has been registered by Certification and Engineering Bureau of Industry Canada for radio equipment testing

5.2. Location

Shenzhen Tongce Testing Lab

Address: 1B/F., Building 1, Yibaolai Industrial Park, Qiaotou, Fuyong, Baoan District, Shenzhen, Guangdong, China

TEL: +86-755-27673339

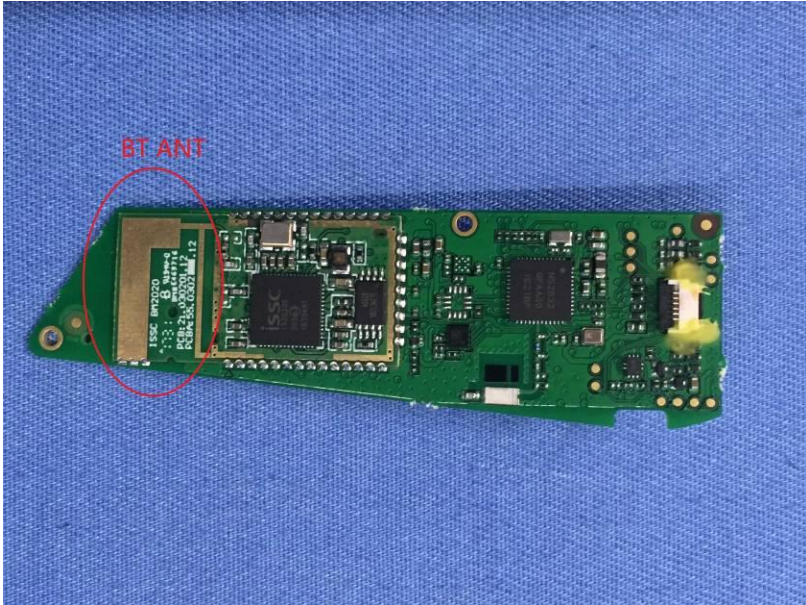
5.3. Measurement Uncertainty

The reported uncertainty of measurement $y \pm U$, where expended uncertainty U is based on a standard uncertainty multiplied by a coverage factor of $k=2$, providing a level of confidence of approximately 95 %.

No.	Item	MU
1	Conducted Emission	$\pm 2.56\text{dB}$
2	RF power, conducted	$\pm 0.12\text{dB}$
3	Spurious emissions, conducted	$\pm 0.11\text{dB}$
4	All emissions, radiated(<1GHz)	$\pm 3.92\text{dB}$
5	All emissions, radiated(>1GHz)	$\pm 4.28\text{dB}$
6	Temperature	$\pm 0.1^{\circ}\text{C}$
7	Humidity	$\pm 1.0\%$

6. Test Results and Measurement Data

6.1. Antenna Requirement

Standard requirement:	FCC Part15 C Section 15.203
<p>15.203 requirement: An intentional radiator shall be designed to ensure that no antenna other than that furnished by the responsible party shall be used with the device. The use of a permanently attached antenna or of an antenna that uses a unique coupling to the intentional radiator, the manufacturer may design the unit so that a broken antenna can be replaced by the user, but the use of a standard antenna jack or electrical connector is prohibited.</p>	
E.U.T Antenna:	
<p>The EUT antenna is PCB antenna which permanently attached, and the best case gain of the antenna is 2.0dBi.</p>	
	

6.2. Conducted Emission

6.2.1. Test Specification

Test Requirement:	FCC Part15 C Section 15.207														
Test Method:	ANSI C63.10:2013														
Frequency Range:	150 kHz to 30 MHz														
Receiver setup:	RBW=9 kHz, VBW=30 kHz, Sweep time=auto														
Limits:	<table><tr><th rowspan="2">Frequency range (MHz)</th><th colspan="2">Limit (dBuV)</th></tr><tr><th>Quasi-peak</th><th>Average</th></tr><tr><td>0.15-0.5</td><td>66 to 56*</td><td>56 to 46*</td></tr><tr><td>0.5-5</td><td>56</td><td>46</td></tr><tr><td>5-30</td><td>60</td><td>50</td></tr></table>	Frequency range (MHz)	Limit (dBuV)		Quasi-peak	Average	0.15-0.5	66 to 56*	56 to 46*	0.5-5	56	46	5-30	60	50
Frequency range (MHz)	Limit (dBuV)														
	Quasi-peak	Average													
0.15-0.5	66 to 56*	56 to 46*													
0.5-5	56	46													
5-30	60	50													
Test Setup:	<div><p>Reference Plane</p><p>40cm 80cm</p><p>LISN</p><p>AUX Equipment</p><p>E.U.T</p><p>Test table/Insulation plane</p><p>LISN</p><p>Filter</p><p>AC power</p><p>EMI Receiver</p><p>Remark: E.U.T.: Equipment Under Test LISN: Line Impedance Stabilization Network Test table height=0.8m</p></div>														
Test Mode:	Transmitting mode with modulation														
Test Procedure:	<div><div>1. The E.U.T and simulators are connected to the main power through a line impedance stabilization network (L.I.S.N.). This provides a 50ohm/50uH coupling impedance for the measuring equipment.</div><div>2. The peripheral devices are also connected to the main power through a LISN that provides a 50ohm/50uH coupling impedance with 50ohm termination. (Please refer to the block diagram of the test setup and photographs).</div><div>3. Both sides of A.C. line are checked for maximum conducted interference. In order to find the maximum emission, the relative positions of equipment and all of the interface cables must be changed according to ANSI C63.10:2013 on conducted measurement.</div></div>														
Test Result:	Pass														

6.2.2. Test Instruments

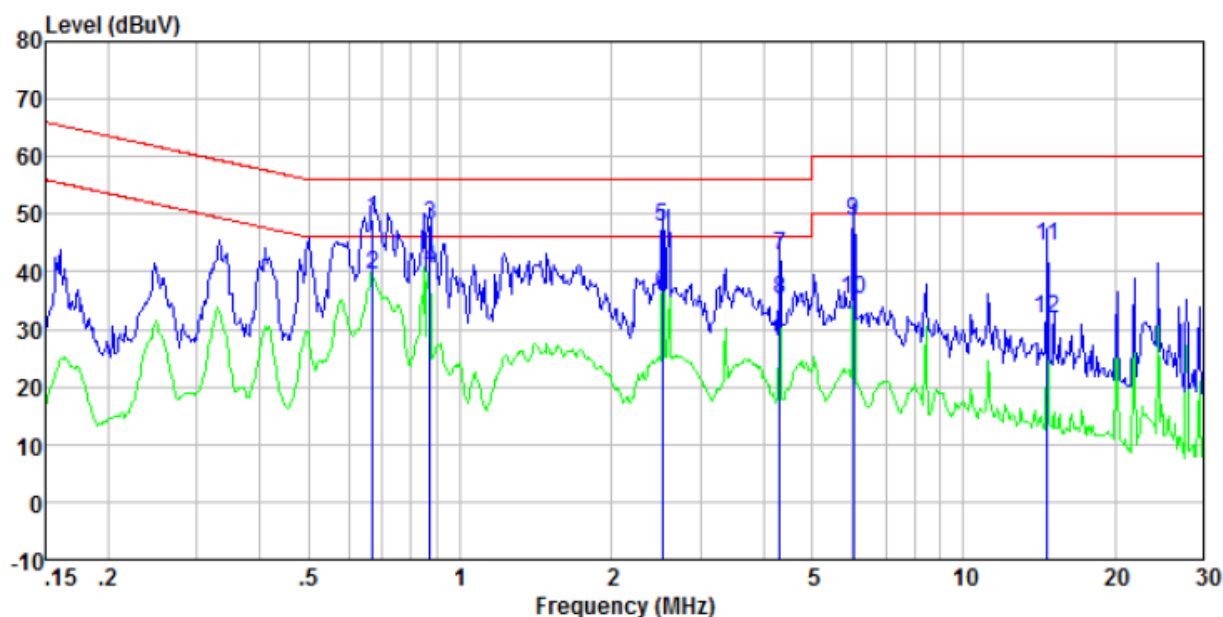
Conducted Emission Shielding Room Test Site (843)				
Equipment	Manufacturer	Model	Serial Number	Calibration Due
Test Receiver	R&S	ESPI	101401	Jun. 12, 2018
LISN	Schwarzbeck	NSLK 8126	8126453	Sep. 27, 2018
Coax cable (9KHz-30MHz)	TCT	CE-05	N/A	Sep. 27, 2018
EMI Test Software	Shurple Technology	EZ-EMC	N/A	N/A

Note: The calibration interval of the above test instruments is 12 months and the calibrations are traceable to international system unit (SI).

6.2.3. Test data

Please refer to following diagram for individual

Conducted Emission on Line Terminal of the power line (150 kHz to 30MHz)

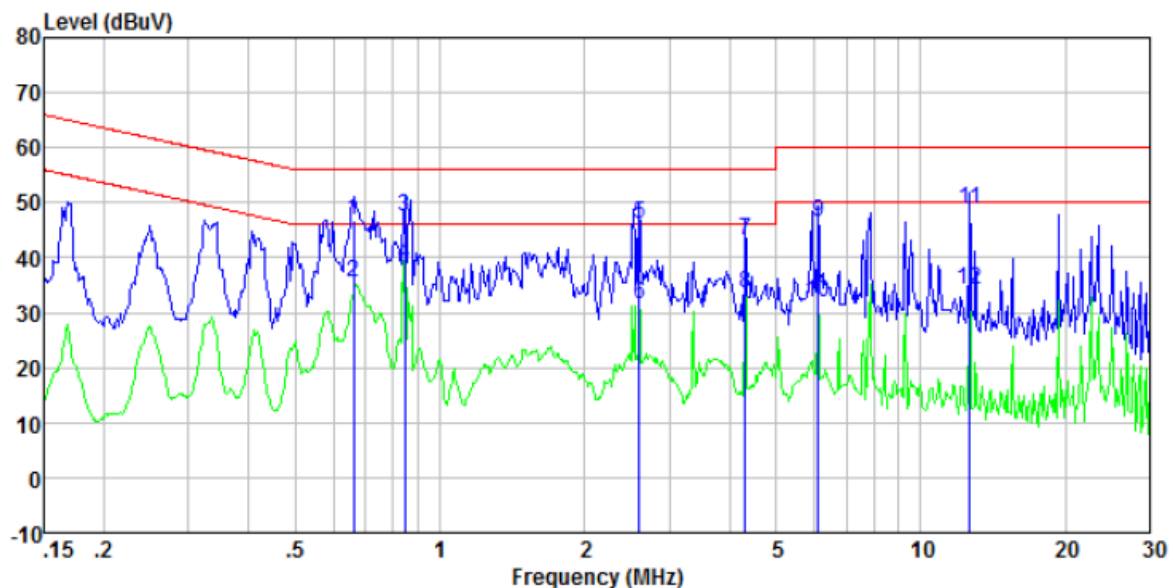


Freq MHz	Reading level dBuV	LISN/ISN factor dB	Cable loss dB	level dBuV	Limit level dBuV	Over limit dB	Remark
0.672	48.62	0.29	0.13	49.04	56.00	-6.96	QP
0.672	39.04	0.29	0.13	39.46	46.00	-6.54	Average
0.871	47.68	0.26	0.13	48.07	56.00	-7.93	QP
0.871	40.07	0.26	0.13	40.46	46.00	-5.54	Average
2.527	47.52	0.20	0.15	47.87	56.00	-8.13	QP
2.527	35.87	0.20	0.15	36.22	46.00	-9.78	Average
4.315	42.59	0.21	0.15	42.95	56.00	-13.05	QP
4.315	34.94	0.21	0.15	35.30	46.00	-10.70	Average
6.056	48.27	0.21	0.16	48.64	60.00	-11.36	QP
6.056	34.64	0.21	0.16	35.01	50.00	-14.99	Average
14.672	44.00	0.22	0.22	44.44	60.00	-15.56	QP
14.672	31.44	0.22	0.22	31.88	50.00	-18.12	Average

Notes:

1. An initial pre-scan was performed on the line and neutral lines with peak detector.
2. Quasi-Peak and Average measurement were performed at the frequencies with maximized peak emission.
3. Final Level = Receiver Read level + LISN Factor + Cable Loss
4. If the average limit is met when using a quasi-peak detector receiver, the EUT shall be deemed to meet both limits and measurement with the average detector receiver is unnecessary.

Conducted Emission on Neutral Terminal of the power line (150 kHz to 30MHz)



Freq MHz	Reading level dBuV	LISN/ISN factor dB	Cable loss dB	level dBuV	Limit level dBuV	Over limit dB	Remark
0.661	46.57	0.25	0.13	46.95	56.00	-9.05	QP
0.661	34.95	0.25	0.13	35.33	46.00	-10.67	Average
0.844	47.16	0.22	0.13	47.51	56.00	-8.49	QP
0.844	38.51	0.22	0.13	38.86	46.00	-7.14	Average
2.594	45.80	0.20	0.15	46.15	56.00	-9.85	QP
2.594	31.15	0.20	0.15	31.50	46.00	-14.50	Average
4.315	42.78	0.21	0.15	43.14	56.00	-12.86	QP
4.315	33.14	0.21	0.15	33.50	46.00	-12.50	Average
6.121	46.00	0.21	0.16	46.37	60.00	-13.63	QP
6.121	31.37	0.21	0.16	31.74	50.00	-18.26	Average
12.649	48.21	0.23	0.21	48.65	60.00	-11.35	QP
12.649	33.64	0.23	0.21	34.08	50.00	-15.92	Average

Notes:

1. An initial pre-scan was performed on the line and neutral lines with peak detector.
2. Quasi-Peak and Average measurement were performed at the frequencies with maximized peak emission.
3. Final Level = Receiver Read level + LISN Factor + Cable Loss
4. If the average limit is met when using a quasi-peak detector receiver, the EUT shall be deemed to meet both limits and measurement with the average detector receiver is unnecessary.

6.3. Radiated Emission Measurement

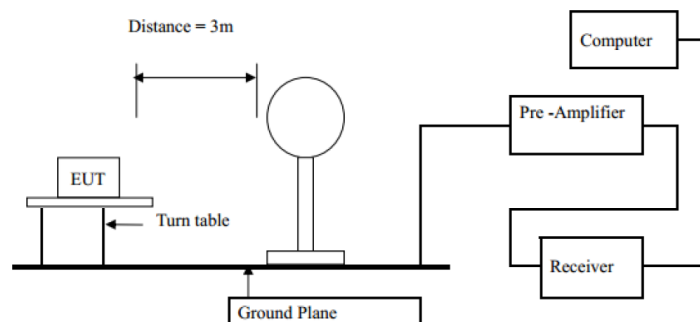
6.3.1. Test Specification

Test Requirement:	FCC Part15 C Section 15.209/ Part 2 J Section 2.1053				
Test Method:	ANSI C63.10:2013				
Frequency Range:	9 kHz to 25 GHz				
Measurement Distance:	3 m				
Antenna Polarization:	Horizontal & Vertical				
Receiver Setup:	Frequency	Detector	RBW	VBW	Remark
	9kHz- 150kHz	Quasi-peak	200Hz	1kHz	Quasi-peak Value
	150kHz- 30MHz	Quasi-peak	9kHz	30kHz	Quasi-peak Value
	30MHz-1GHz	Quasi-peak	120kHz	300kHz	Quasi-peak Value
	Above 1GHz	Peak	1MHz	3MHz	Peak Value
Limit(Field strength of the fundamental signal):					
	Frequency		Limit (dBuV/m @3m)		Remark
	2400MHz-2483.5MHz		94.00		Average Value
Limit(Spurious Emissions):			114.00		Peak Value
	Frequency		Limit (dBuV/m @3m)		Remark
	0.009-0.490		2400/F(KHz)		Quasi-peak Value
	0.490-1.705		24000/F(KHz)		Quasi-peak Value
	1.705-30		30		Quasi-peak Value
	30MHz-88MHz		40.0		Quasi-peak Value
	88MHz-216MHz		43.5		Quasi-peak Value
	216MHz-960MHz		46.0		Quasi-peak Value
	960MHz-1GHz		54.0		Quasi-peak Value
Limit (band edge) :	Above 1GHz		54.0		Average Value
			74.0		Peak Value
Limit (band edge) :	Emissions radiated outside of the specified frequency bands, except for harmonics, shall be attenuated by at least 50 dB below the level of the fundamental or to the general radiated emission limits in Section 15.209, whichever is the lesser attenuation.				
Test Procedure:	<div>1. The EUT was placed on the top of a rotating table 0.8 meters above the ground at a 3 meter chamber in below 1GHz, 1.5m above the ground in above 1GHz. The table was rotated 360 degrees to determine the position of the highest radiation.</div> <div>2. The EUT was set 3 meters away from the interference-receiving antenna, which was mounted on the top of a variable-height antenna tower.</div> <div>3. The antenna height is varied from one meter to four meters above the ground to determine the maximum value of the field strength. Both horizontal and vertical polarizations of the antenna are set to make</div>				

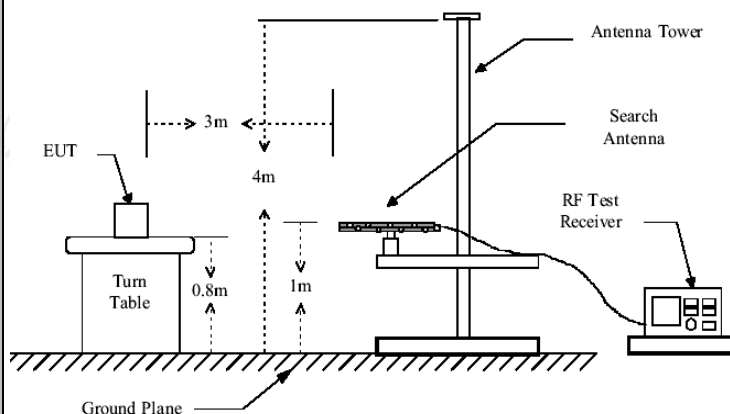
- the measurement.
- For each suspected emission, the EUT was arranged to its worst case and then the antenna was tuned to heights from 1 meter to 4 meters and the rotatable table was turned from 0 degrees to 360 degrees to find the maximum reading.
 - The test-receiver system was set to Peak Detect Function and Specified Bandwidth with Maximum Hold Mode.
 - If the emission level of the EUT in peak mode was 10dB lower than the limit specified, then testing could be stopped and the peak values of the EUT would be reported. Otherwise the emissions that did not have 10dB margin would be re-tested one by one using peak, quasi-peak or average method as specified and then reported in a data sheet.

Test setup:

For radiated emissions below 30MHz

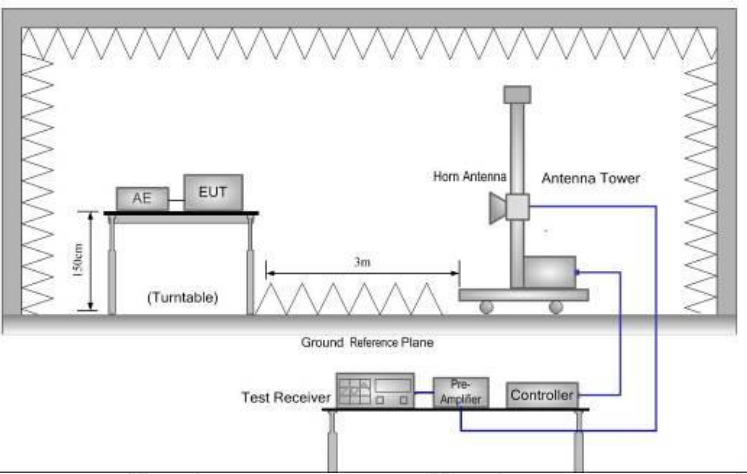


30MHz to 1GHz



Above 1GHz

(The diagram below shows the test setup that is utilized to make the measurements for emission from 1GHz to the tenth harmonic of the highest fundamental frequency or to 40GHz emissions, whichever is lower.)

	
Test results:	PASS

6.3.2. Test Instruments

Radiated Emission Test Site (966)				
Name of Equipment	Manufacturer	Model	Serial Number	Calibration Due
Test Receiver	ROHDE&SCHW ARZ	ESVD	100008	Sep. 27, 2018
Spectrum Analyzer	ROHDE&SCHW ARZ	FSQ	200061	Sep. 27, 2018
Pre-amplifier	EM Electronics Corporation CO.,LTD	EM30265	07032613	Sep. 27, 2018
Pre-amplifier	HP	8447D	2727A05017	Sep. 27, 2018
Loop antenna	ZHINAN	ZN30900A	12024	Sep. 27, 2018
Broadband Antenna	Schwarzbeck	VULB9163	340	Sep. 27, 2018
Horn Antenna	Schwarzbeck	BBHA 9120D	631	Sep. 27, 2018
Horn Antenna	Schwarzbeck	BBH 9170	582	Jun. 07, 2018
Antenna Mast	Keleto	CC-A-4M	N/A	N/A
Coax cable (9KHz-1GHz)	TCT	RE-low-01	N/A	Sep. 27, 2018
Coax cable (9KHz-40GHz)	TCT	RE-high-02	N/A	Sep. 27, 2018
Coax cable (9KHz-1GHz)	TCT	RE-low-03	N/A	Sep. 27, 2018
Coax cable (9KHz-40GHz)	TCT	RE-high-04	N/A	Sep. 27, 2018
EMI Test Software	Shurple Technology	EZ-EMC	N/A	N/A

Note: The calibration interval of the above test instruments is 12 months and the calibrations are traceable to international system unit (SI).

6.3.3. Test Data

Field Strength of Fundamental

Frequency (MHz)	Emission PK/AV (dBuV/m)	Horizontal /Vertical	Limits PK/AV (dBuV/m)	Margin (dB)
2402	91.38 (PK)	H	114/94	-22.62
2402	80.07 (AV)	H	114/94	-13.93
2441	90.53 (PK)	H	114/94	-23.47
2441	77.90 (AV)	H	114/94	-16.10
2480	92.10 (PK)	H	114/94	-21.90
2480	80.71 (AV)	H	114/94	-13.29
2402	93.78 (PK)	V	114/94	-20.22
2402	82.32 (AV)	V	114/94	-11.68
2441	92.32 (PK)	V	114/94	-21.68
2441	80.74 (AV)	V	114/94	-13.26
2480	95.12 (PK)	V	114/94	-18.88
2480	83.63 (AV)	V	114/94	-10.37

Spurious Emissions

Frequency Range (9 kHz-30MHz)

Frequency (MHz)	Level@3m (dBuV/m)	Limit@3m (dBuV/m)
--	--	--
--	--	--
--	--	--
--	--	--

Note: 1. Emission Level=Reading+ Cable loss-Antenna factor-Amp factor

2. The emission levels are 20 dB below the limit value, which are not reported. It is deemed to comply with the requirement

Frequency Range (30MHz-1GHz)

Frequency (MHz)	Read Level (dBuV)	Antenna Factor (dB/m)	Cable Loss (dB)	Preamplifier Factor (dB)	Level (dBuV/m)	Limit Line (dBuV/m)	Over Limit (dB)	polarization
50.59	30.03	12.20	0.78	30.00	13.01	40.00	-26.99	Vertical
100.23	28.18	12.10	1.19	29.70	11.77	43.50	-31.73	Vertical
147.92	40.90	7.50	1.56	29.42	20.54	43.50	-22.96	Vertical
167.82	34.54	8.33	1.67	29.33	15.21	43.50	-28.29	Vertical
216.02	30.32	10.78	1.93	29.36	13.67	46.00	-32.33	Vertical
364.26	26.87	14.79	2.69	29.67	14.68	46.00	-31.32	Vertical
83.82	32.11	8.40	1.06	29.78	11.79	40.00	-28.21	Horizontal
148.96	51.85	7.50	1.56	29.41	31.50	43.50	-12.00	Horizontal
226.89	35.84	11.07	2.00	29.45	19.46	46.00	-26.54	Horizontal
350.48	36.32	14.50	2.62	29.73	23.71	46.00	-22.29	Horizontal
463.97	27.81	16.77	3.15	29.37	18.36	46.00	-27.64	Horizontal
782.35	23.49	21.03	4.40	29.20	19.72	46.00	-26.28	Horizontal

Band Edge Requirement

Test channel:	Lowest channel
---------------	----------------

Peak value:

Frequency (MHz)	Read Level (dBuV)	Antenna Factor (dB/m)	Cable Loss (dB)	Preamplifier Factor (dB)	Level (dBuV/m)	Limit Line (dBuV/m)	Over Limit (dB)	Polarization
2390.00	43.19	27.59	5.38	30.18	45.98	74.00	-28.02	Horizontal
2400.00	60.03	27.58	5.39	30.18	62.82	74.00	-11.18	Horizontal
2390.00	43.77	27.59	5.38	30.18	46.56	74.00	-27.44	Vertical
2400.00	62.10	27.58	5.39	30.18	64.89	74.00	-9.11	Vertical

Average value:

Frequency (MHz)	Read Level (dBuV)	Antenna Factor (dB/m)	Cable Loss (dB)	Preamplifier Factor (dB)	Level (dBuV/m)	Limit Line (dBuV/m)	Over Limit (dB)	Polarization
2390.00	33.67	27.59	5.38	30.18	36.46	54.00	-17.54	Horizontal
2400.00	44.93	27.58	5.39	30.18	47.72	54.00	-6.28	Horizontal
2390.00	33.64	27.59	5.38	30.18	36.43	54.00	-17.57	Vertical
2400.00	46.61	27.58	5.39	30.18	49.40	54.00	-4.60	Vertical

Test channel:	Highest channel
---------------	-----------------

Peak value:

Frequency (MHz)	Read Level (dBuV)	Antenna Factor (dB/m)	Cable Loss (dB)	Preamplifier Factor (dB)	Level (dBuV/m)	Limit Line (dBuV/m)	Over Limit (dB)	Polarization
2483.50	45.33	27.53	5.47	29.93	48.40	74.00	-25.60	Horizontal
2500.00	44.45	27.55	5.49	29.93	47.56	74.00	-26.44	Horizontal
2483.50	46.23	27.53	5.47	29.93	49.30	74.00	-24.70	Vertical
2500.00	45.47	27.55	5.49	29.93	48.58	74.00	-25.42	Vertical

Average value:

Frequency (MHz)	Read Level (dBuV)	Antenna Factor (dB/m)	Cable Loss (dB)	Preamplifier Factor (dB)	Level (dBuV/m)	Limit Line (dBuV/m)	Over Limit (dB)	Polarization
2483.50	36.50	27.53	5.47	29.93	39.57	54.00	-14.43	Horizontal
2500.00	34.46	27.55	5.49	29.93	37.57	54.00	-16.43	Horizontal
2483.50	37.74	27.53	5.47	29.93	40.81	54.00	-13.19	Vertical
2500.00	34.41	27.55	5.49	29.93	37.52	54.00	-16.48	Vertical

Note:

1. Emission Level=Peak Reading + Correction Factor; Correction Factor= Antenna Factor + Cable loss – Pre-amplifier
2. Margin (dB) = Emission Level (dBuV/m)- limit (dBuV/m)

Above 1GHz

Test channel:	Lowest channel
---------------	----------------

Peak value:

Frequency (MHz)	Read Level (dBuV)	Antenna Factor (dB/m)	Cable Loss (dB)	Preamplifier Factor (dB)	Level (dBuV/m)	Limit Line (dBuV/m)	Over Limit (dB)	polarization
4804.00	37.07	31.78	8.60	32.09	45.36	74.00	-28.64	Vertical
7206.00	31.67	36.15	11.65	32.00	47.47	74.00	-26.53	Vertical
9608.00	31.33	37.95	14.14	31.62	51.80	74.00	-22.20	Vertical
12010.00	*					74.00		Vertical
14412.00	*					74.00		Vertical
4804.00	41.30	31.78	8.60	32.09	49.59	74.00	-24.41	Horizontal
7206.00	33.41	36.15	11.65	32.00	49.21	74.00	-24.79	Horizontal
9608.00	30.73	37.95	14.14	31.62	51.20	74.00	-22.80	Horizontal
12010.00	*					74.00		Horizontal
14412.00	*					74.00		Horizontal

Average value:

Frequency (MHz)	Read Level (dBuV)	Antenna Factor (dB/m)	Cable Loss (dB)	Preamplifier Factor (dB)	Level (dBuV/m)	Limit Line (dBuV/m)	Over Limit (dB)	polarization
4804.00	25.93	31.78	8.60	32.09	34.22	54.00	-19.78	Vertical
7206.00	20.39	36.15	11.65	32.00	36.19	54.00	-17.81	Vertical
9608.00	19.48	37.95	14.14	31.62	39.95	54.00	-14.05	Vertical
12010.00	*					54.00		Vertical
14412.00	*					54.00		Vertical
4804.00	30.13	31.78	8.60	32.09	38.42	54.00	-15.58	Horizontal
7206.00	22.54	36.15	11.65	32.00	38.34	54.00	-15.66	Horizontal
9608.00	19.19	37.95	14.14	31.62	39.66	54.00	-14.34	Horizontal
12010.00	*					54.00		Horizontal
14412.00	*					54.00		Horizontal

Note:

1. Emission Level=Peak Reading + Correction Factor; Correction Factor= Antenna Factor + Cable loss – Pre-amplifier
2. Margin (dB) = Emission Level (dBuV/m)- limit (dBuV/m)
3. The emission levels of other frequencies are very lower than the limit and not show in test report.
4. Measurements were conducted from 1 GHz to the 10th harmonic of highest fundamental frequency.
5. Data of measurement shown “*” in the above table mean that the reading of emissions is attenuated more than 20 dB below the limits or the field strength is too small to be measured.

Test channel:	Middle channel
---------------	----------------

Peak value:

Frequency (MHz)	Read Level (dBuV)	Antenna Factor (dB/m)	Cable Loss (dB)	Preamplifier Factor (dB)	Level (dBuV/m)	Limit Line (dBuV/m)	Over Limit (dB)	polarization
4882.00	37.57	31.85	8.67	32.12	45.97	74.00	-28.03	Vertical
7323.00	32.00	36.37	11.72	31.89	48.20	74.00	-25.80	Vertical
9764.00	31.62	38.35	14.25	31.62	52.60	74.00	-21.40	Vertical
12205.00	*					74.00		Vertical
14646.00	*					74.00		Vertical
4882.00	41.90	31.85	8.67	32.12	50.30	74.00	-23.70	Horizontal
7323.00	33.78	36.37	11.72	31.89	49.98	74.00	-24.02	Horizontal
9764.00	31.07	38.35	14.25	31.62	52.05	74.00	-21.95	Horizontal
12205.00	*					74.00		Horizontal
14646.00	*					74.00		Horizontal

Average value:

Frequency (MHz)	Read Level (dBuV)	Antenna Factor (dB/m)	Cable Loss (dB)	Preamplifier Factor (dB)	Level (dBuV/m)	Limit Line (dBuV/m)	Over Limit (dB)	polarization
4882.00	26.34	31.85	8.67	32.12	34.74	54.00	-19.26	Vertical
7323.00	20.67	36.37	11.72	31.89	36.87	54.00	-17.13	Vertical
9764.00	19.73	38.35	14.25	31.62	40.71	54.00	-13.29	Vertical
12205.00	*					54.00		Vertical
14646.00	*					54.00		Vertical
4882.00	30.60	31.85	8.67	32.12	39.00	54.00	-15.00	Horizontal
7323.00	22.86	36.37	11.72	31.89	39.06	54.00	-14.94	Horizontal
9764.00	19.48	38.35	14.25	31.62	40.46	54.00	-13.54	Horizontal
12205.00	*					54.00		Horizontal
14646.00	*					54.00		Horizontal

Note:

1. Emission Level=Peak Reading + Correction Factor; Correction Factor= Antenna Factor + Cable loss – Pre-amplifier
2. Margin (dB) = Emission Level (dBuV/m)- limit (dBuV/m)
3. The emission levels of other frequencies are very lower than the limit and not show in test report.
4. Measurements were conducted from 1 GHz to the 10th harmonic of highest fundamental frequency.
5. Data of measurement shown “*” in the above table mean that the reading of emissions is attenuated more than 20 dB below the limits or the field strength is too small to be measured.

Test channel:	Highest channel
---------------	-----------------

Peak value:

Frequency (MHz)	Read Level (dBuV)	Antenna Factor (dB/m)	Cable Loss (dB)	Preamplifier Factor (dB)	Level (dBuV/m)	Limit Line (dBuV/m)	Over Limit (dB)	polarization
4960.00	37.50	31.93	8.73	32.16	46.00	74.00	-28.00	Vertical
7440.00	31.96	36.59	11.79	31.78	48.56	74.00	-25.44	Vertical
9920.00	31.59	38.81	14.38	31.88	52.90	74.00	-21.10	Vertical
12400.00	*					74.00		Vertical
14880.00	*					74.00		Vertical
4960.00	41.83	31.93	8.73	32.16	50.33	74.00	-23.67	Horizontal
7440.00	33.73	36.59	11.79	31.78	50.33	74.00	-23.67	Horizontal
9920.00	31.03	38.81	14.38	31.88	52.34	74.00	-21.66	Horizontal
12400.00	*					74.00		Horizontal
14880.00	*					74.00		Horizontal

Average value:


Frequency (MHz)	Read Level (dBuV)	Antenna Factor (dB/m)	Cable Loss (dB)	Preamplifier Factor (dB)	Level (dBuV/m)	Limit Line (dBuV/m)	Over Limit (dB)	polarization
4960.00	26.37	31.93	8.73	32.16	34.87	54.00	-19.13	Vertical
7440.00	20.69	36.59	11.79	31.78	37.29	54.00	-16.71	Vertical
9920.00	19.75	38.81	14.38	31.88	41.06	54.00	-12.94	Vertical
12400.00	*					54.00		Vertical
14880.00	*					54.00		Vertical
4960.00	30.64	31.93	8.73	32.16	39.14	54.00	-14.86	Horizontal
7440.00	22.88	36.59	11.79	31.78	39.48	54.00	-14.52	Horizontal
9920.00	19.50	38.81	14.38	31.88	40.81	54.00	-13.19	Horizontal
12400.00	*					54.00		Horizontal
14880.00	*					54.00		Horizontal

Note:

1. Emission Level=Peak Reading + Correction Factor; Correction Factor= Antenna Factor + Cable loss – Pre-amplifier
2. Margin (dB) = Emission Level (dBuV/m)- limit (dBuV/m)
3. The emission levels of other frequencies are very lower than the limit and not show in test report.
4. Measurements were conducted from 1 GHz to the 10th harmonic of highest fundamental frequency.
5. Data of measurement shown “*” in the above table mean that the reading of emissions is attenuated more than 20 dB below the limits or the field strength is too small to be measured.

6.4.20dB Occupied Bandwidth

6.4.1. Test Specification

Test Requirement:	FCC Part15 C Section 15.215(c)/ Part 2 J Section 2.1049
Test Method:	ANSI C63.10: 2013
Limit:	N/A
	<ol style="list-style-type: none"> 1. According to the follow Test-setup, keep the relative position between the artificial antenna and the EUT. 2. Set to the maximum power setting and enable the EUT transmit continuously. 3. Use the following spectrum analyzer settings for 20dB Bandwidth measurement. Span = approximately 2 to 3 times the 20 dB bandwidth, centered on a hopping channel; RBW\geq1% of the 20 dB bandwidth; VBW\geqRBW; Sweep = auto; Detector function = peak; Trace = max hold. 4. Measure and record the results in the test report.
Test setup:	 <p>The diagram illustrates the test setup. On the left is a green Spectrum Analyzer with a screen and two knobs. A cable connects it to a yellow rectangular box on the right labeled 'EUT'.</p>
Test Mode:	Transmitting mode with modulation
Test results:	PASS

6.4.2. Test Instruments

RF Test Room				
Equipment	Manufacturer	Model	Serial Number	Calibration Due
Spectrum Analyzer	Agilent	N9020A	MY49100060	Sep. 27, 2018

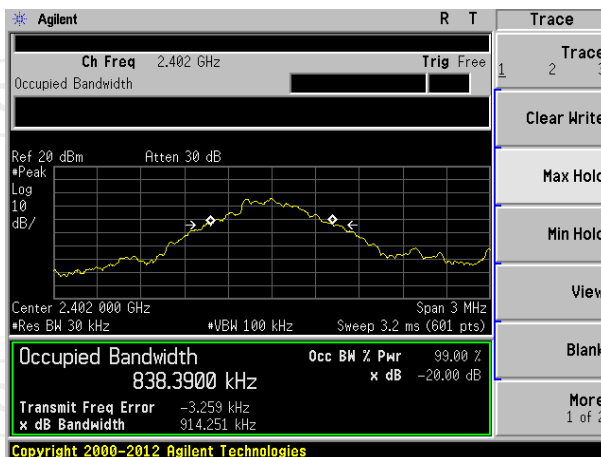
Note: The calibration interval of the above test instruments is 12 months and the calibrations are traceable to international system unit (SI).

6.4.3. Test data

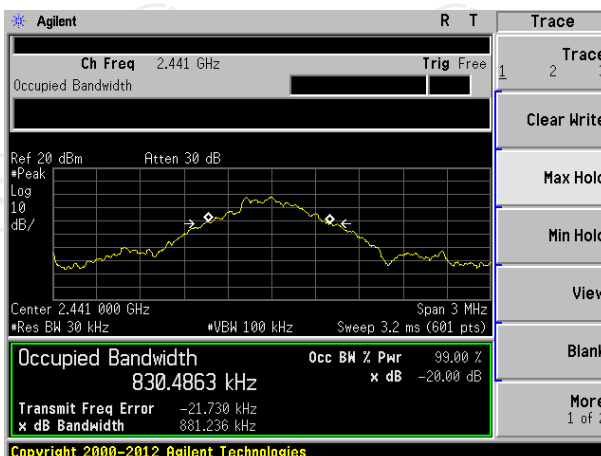
Test Channel	20dB Occupy Bandwidth (kHz)	Limit	Conclusion
Lowest	914	---	PASS
Middle	881	---	PASS
Highest	888	---	PASS

Test plots as follows:

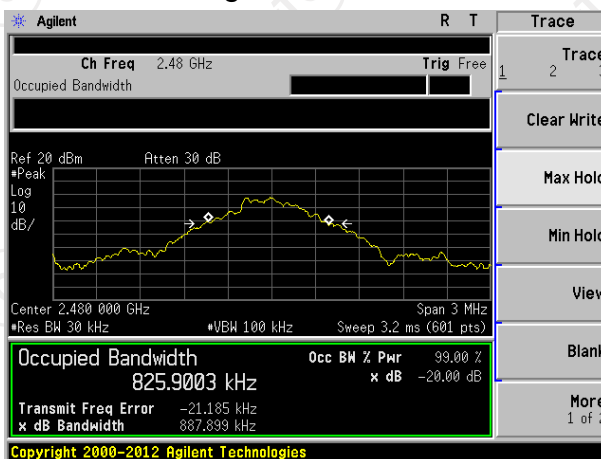
Lowest channel



Middle channel



Highest channel

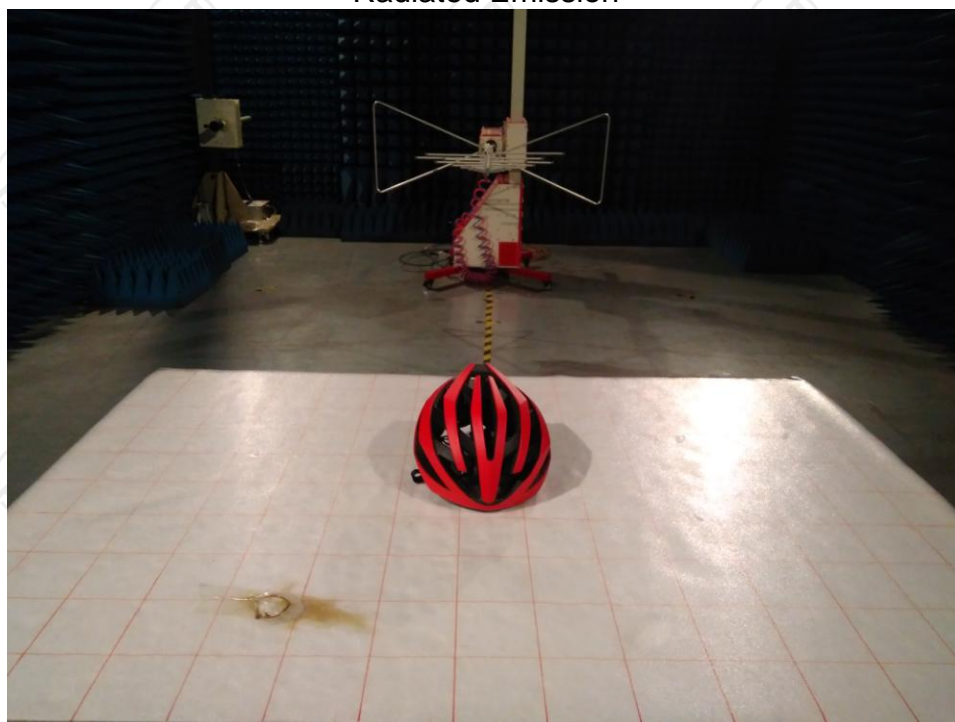


Appendix A: Photographs of Test Setup

Product: Smart Cycling Helmet

Model: OMNI

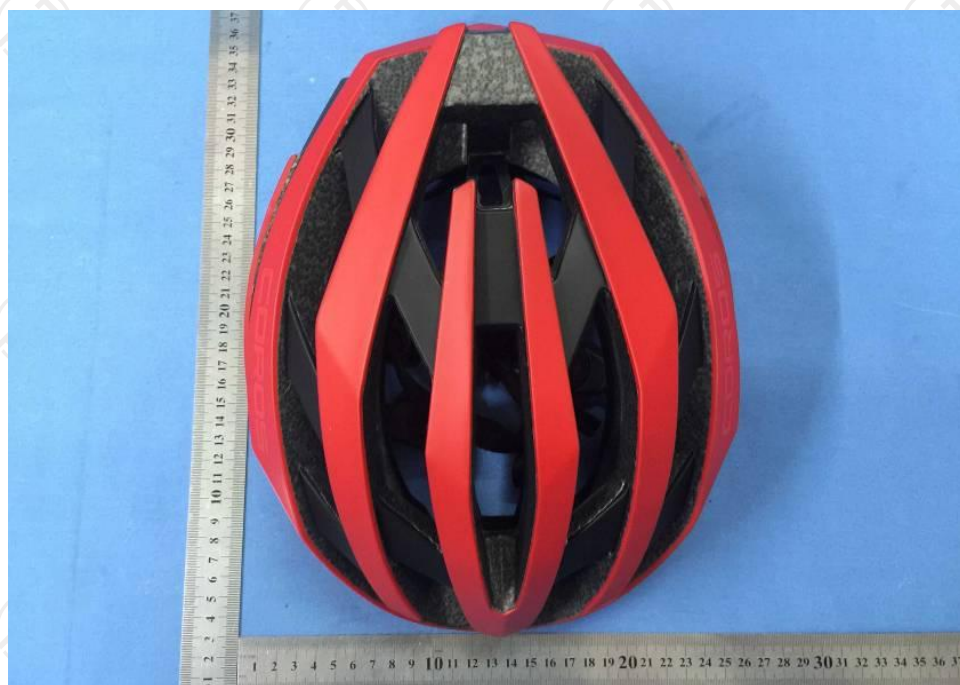
Radiated Emission



Conducted Emission

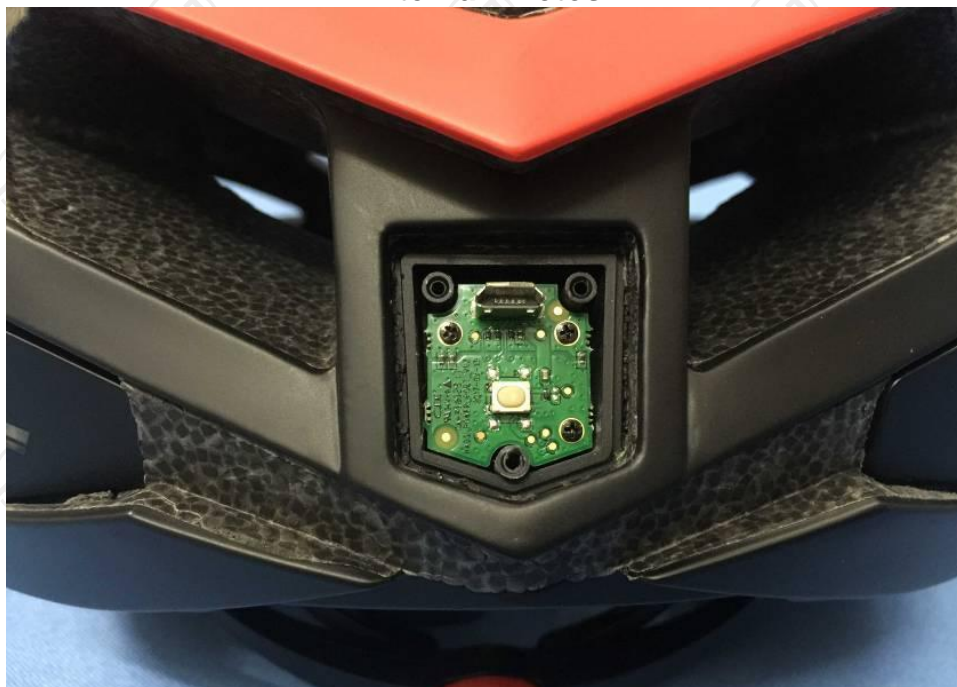


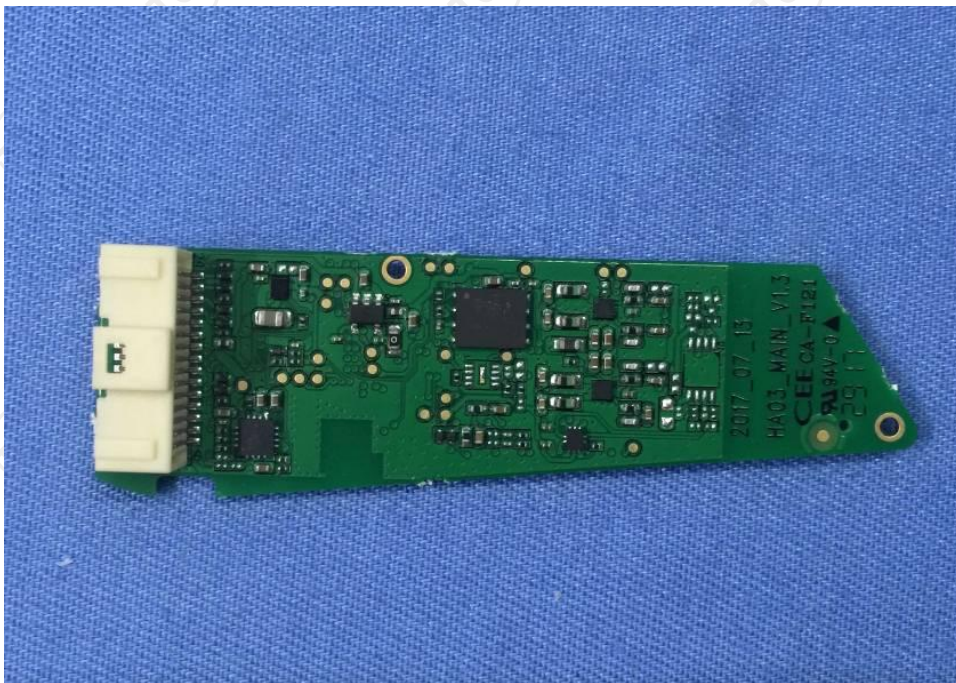
Appendix B: Photographs of EUT
Product: Smart Cycling Helmet
Model: OMNI
External Photos

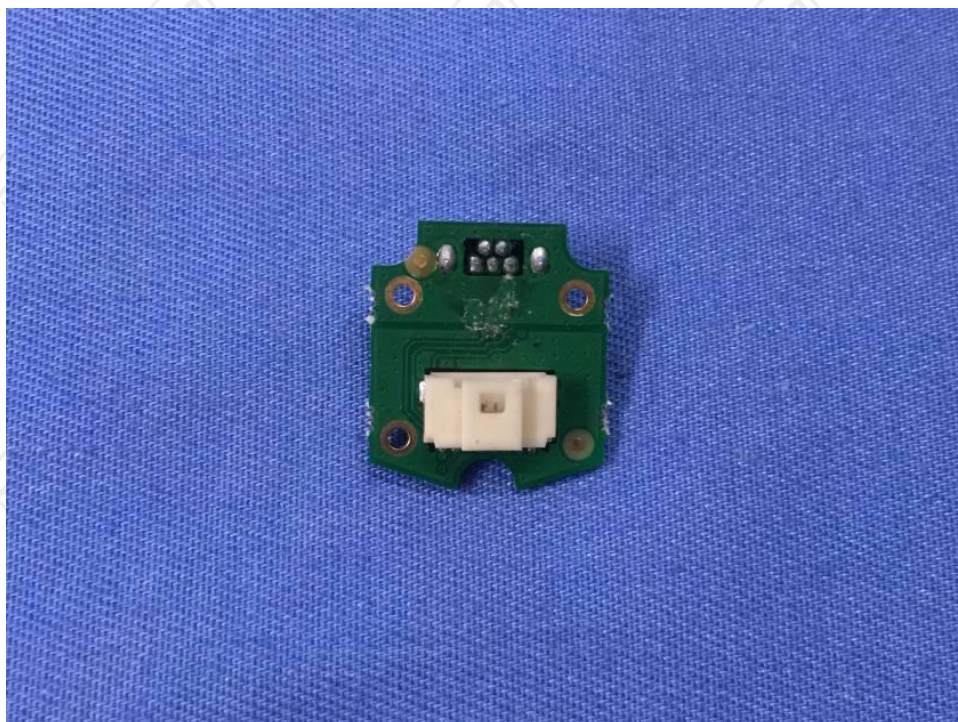
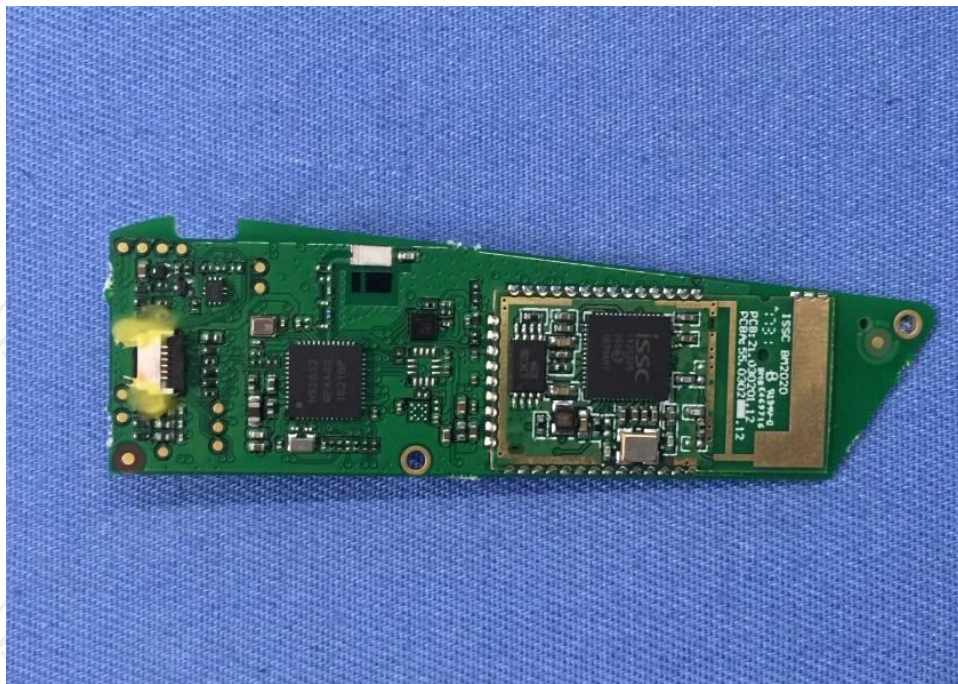


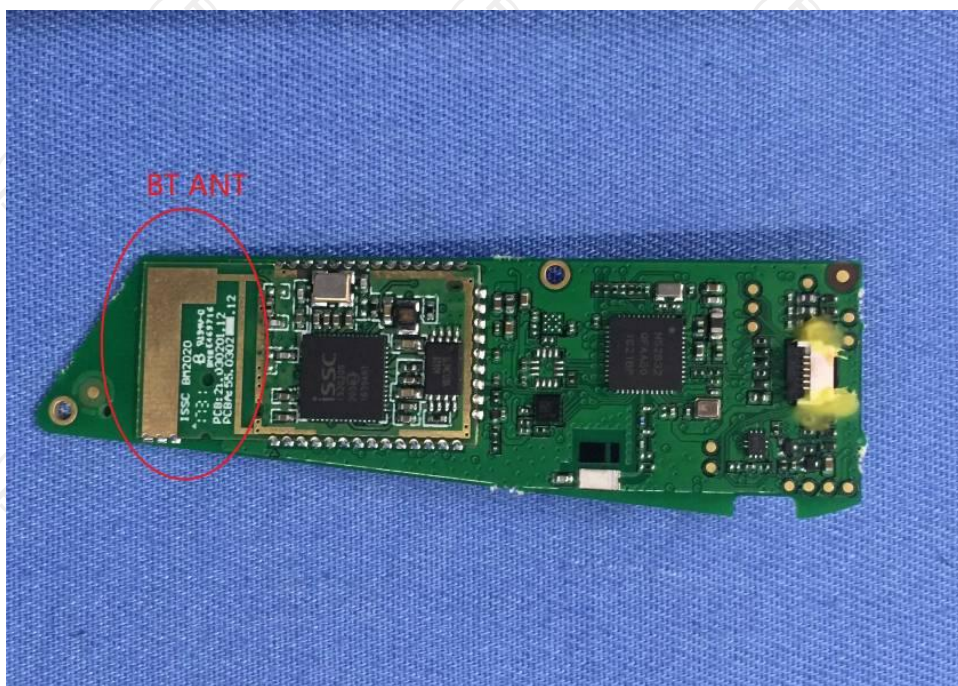
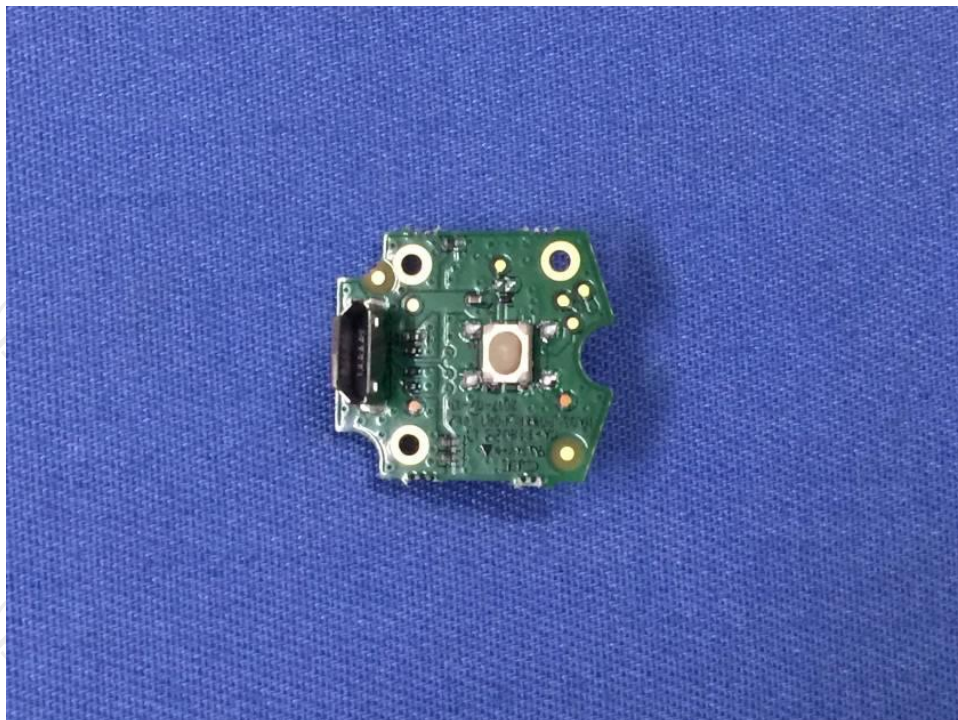


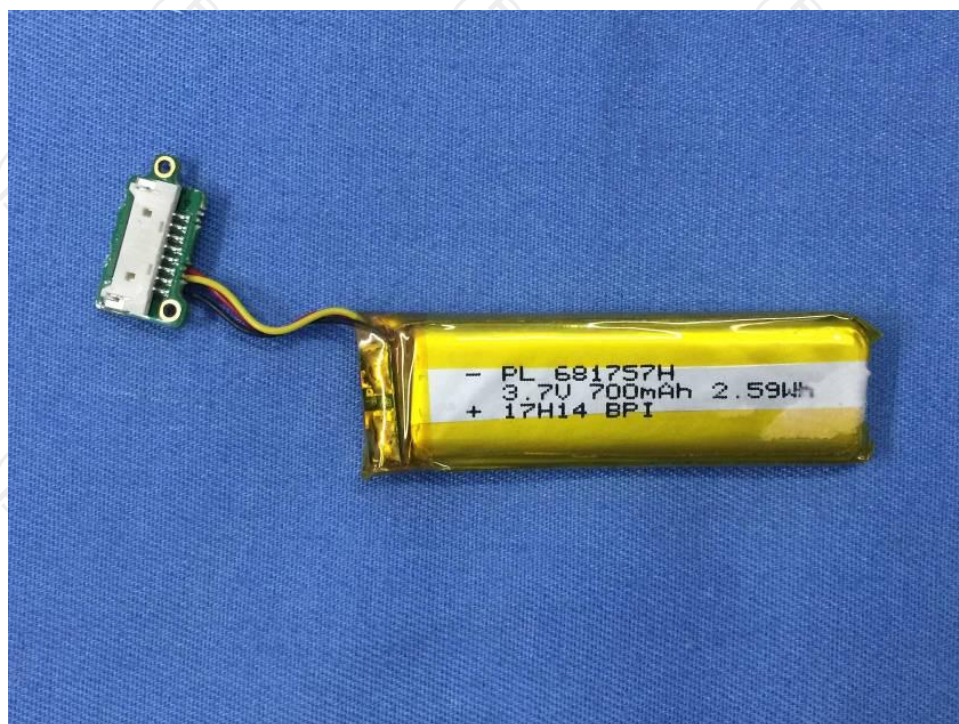
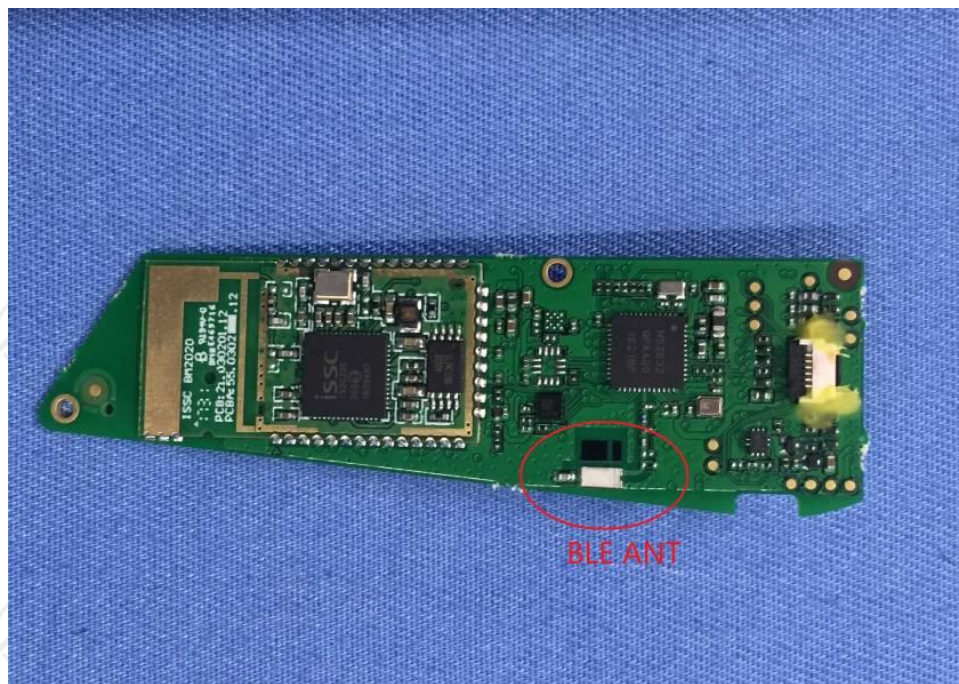
Appendix B: Photographs of EUT
Product: Smart Cycling Helmet
Model: OMNI
Internal Photos











*******END OF REPORT*******