

NOTES: (UNLESS OTHERWISE SPECIFIED)

1. INTERPRET DIMENSIONING AND TOLERANCING PER ASME Y14.5M-1994
2. LEAD FREE/ROHS COMPLIANT PART: ALL COMPONENTS AND PROCESSES USED MUST COMPLY TO EU DIRECTIVE 2002/95/EC.
- 3

MATERIAL: ABS/PC BLEND
COLOR: WHITE
NO REGRIND ALLOWED
MOLDER TO SUPPLY CERTIFICATION OF MATERIAL TO US GRANT TECHNOLOGIES
- 4

FINISH / TEXTURE:

A

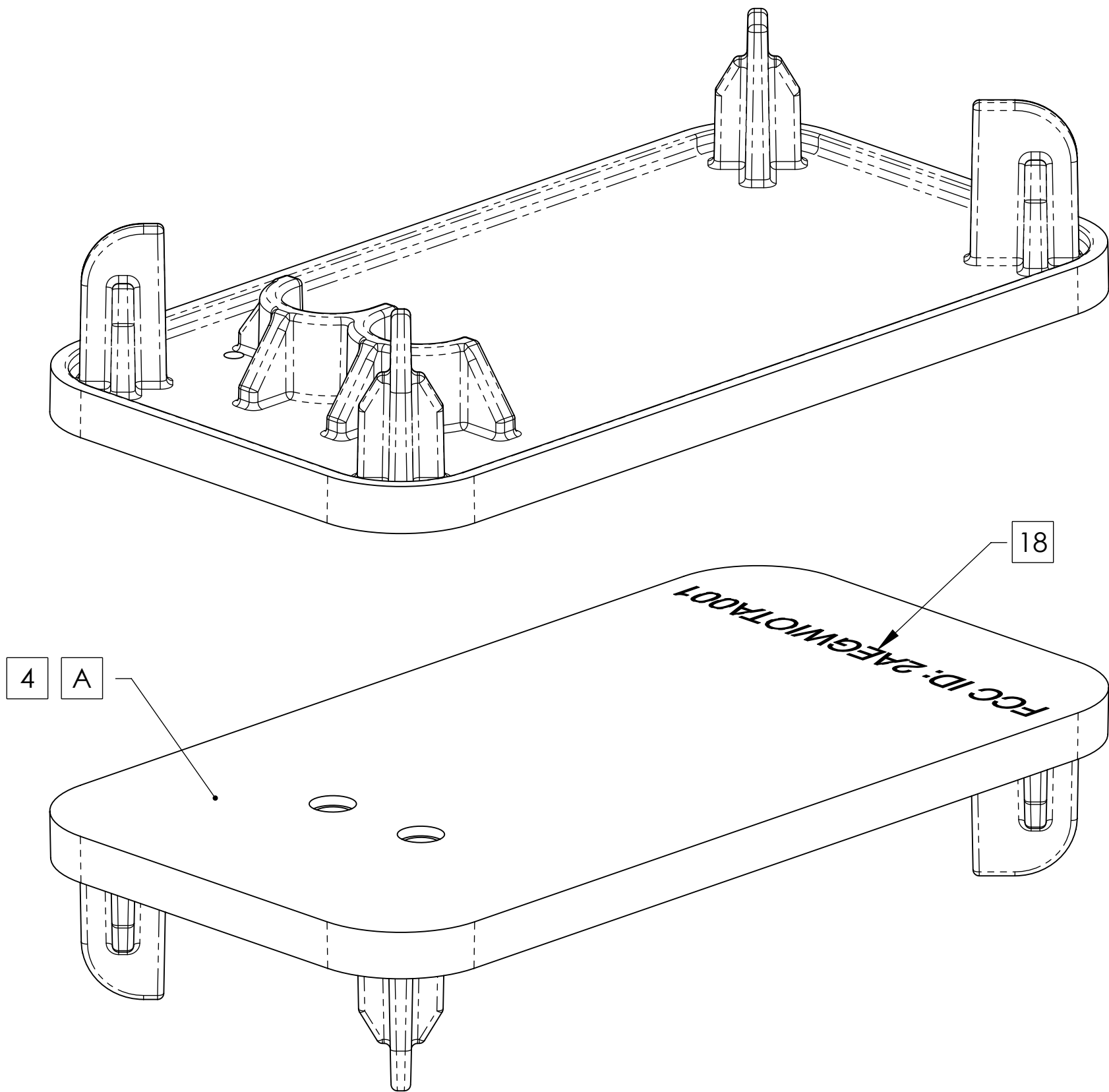
 INDICATED SURFACE TO BE SPI-A2 OR BETTER.

B

 ALL OTHER SURFACES TO BE SPI-B2 OR BETTER.
5. TOOL DESIGN, INCLUDING MOLD GATES, EJECTOR PIN LOCATIONS & PARTING LINES TO BE APPROVED BY US GRANT PRIOR TO MOLD CONSTRUCTION.
6. MOLD TO BE FABRICATED FROM CURRENT REVISION OF USG-1516 CAD MODEL, SUPPLIED BY US/GRANT.
7. ALL PART FEATURE DIMENSIONS UNDEFINED BY THIS DRAWING TO BE DERIVED FROM CURRENT REVISION OF US/GRANT CAD FILE USG-1516 PER ANSI Y14.41-2003 DIGITAL PRODUCTION DEFINITION DATA PRACTICES WITHOUT EXCEPTION, UNLESS AUTHORIZED BY US GRANT.
8. TOLERANCES ARE NON-ACCUMULATIVE.
9. FLASH NOT TO EXCEED .002 INCHES.
10. PARTING LINE OFFSET NOT TO EXCEED 0.001 INCHES.
11. VENDOR MUST HAVE WRITTEN APPROVAL FOR CAVITY DRAWINGS SHOWING EJECTOR PIN AND GATE LOCATION FROM US GRANT BEFORE TOOL STEEL MAY BE CUT
12. VENDOR TO SUBMIT FIRST ARTICLE SAMPLES FOR APPROVAL BY US GRANT ENGINEERING.
13. VENDOR TO SUBMIT DIMENSIONAL INSPECTION REPORT WITH FIRST ARTICLE
14. PART TO BE FREE OF VISIBLE DEFECTS INCLUDING SINKS, STRESS AREAS, VOIDS, POROSITY, CRACKS, BUBBLES, SCRATCHES, EMBEDDED PARTICULATE, ETC. UNLESS WRITTEN AUTHORIZATION IS PROVIDED BY US/GRANT
15. EXTERIOR SURFACES TO BE FREE OF EJECTOR MARKS AND OTHER COSMETIC DEFECTS INCLUDING, BUT NOT LIMITED TO SPLAY, INCLUDED PARTICLES, BURN MARKS AND SIMILAR IMPERFECTIONS
16. PART TO BE PROVIDED TO US GRANT CLEAN. THIS INCLUDES FREE OF EXTERNAL MOLD RELEASE, DEBRIS, DUST, OR OTHER CONTAMINANTS.
17. PACKAGE PART IN BULK WITH SUITABLE PROTECTIN TO PREVENT PART DAMAGE FROM SHIPPING & HANDLING. LABEL OUTSIDE OF PACKAGE WITH PART NUMBER AND CURRENT REVISION.
- 18

PAD PRINT ARTWORK, (USG-1516-AW), IN LOCATION SHOWN. COLOR: BLACK

REVISIONS				
REV.	DESCRIPTION	DATE	INC BY	APVD
P1.A	INITIAL RELEASE	09/23/2014		DSF
P1.B	REVISED MATERIAL INCREASED LENGTH AND WIDTH REVISED ULTRASONIC WELD JOINT ADDED WALL TO CAPTURE BATTERY REVISED CORNER POST GEOMETRY	09/29/2014		DSF
P1.C	REMOVED SIDE TABS REMOVED PERIMETER OVERHANG REDUCED HEIGHT OF PERIMETER WALL	09/30/2014		DSF
P1.D	SHEET 2, SECTION C-C, DIM 7.50 WAS 3.50	10/14/2014		DSF
P1.E	REVISED BATTERY STOP NEAR POGO PINS EXTENDED LENGTH OF X2 ANTENNA GUIDES	10/15/2014		DSF
P1.F	REVISED GEOMETRY FOR CENTRAL POST FEATURE. ADDED RIBS.	01/14/2015		DSF
P1.G	REDUCED HEIGHT OF CENTRAL POST FEATURE.	01/22/2015		DSF
P1.H	ADDED NOTE 18, FCC ID MARKING.	04/7/2015		DSF



PROPRIETARY AND CONFIDENTIAL:
THE INFORMATION CONTAINED IN
THIS DRAWING IS THE SOLE PROPERTY
OF US GRANT TECHNOLOGIES. ANY
REPRODUCTION IN PART OR AS A
WHOLE WITHOUT THE WRITTEN
PERMISSION OF US GRANT TECH.
IS PROHIBITED.

THIRD ANGLE PROJECTION

DRAWN BY

DSF

12-16-2013

MATERIAL:
SEE NOTE 3

FINISH:
SEE NOTE 4

TOLERANCES: (DIMENSIONS
ARE IN MILLIMETERS)
ANGULAR: ±1/2°
X.X ±0.3
X.XX ±0.13

63

✓

TITLE:
LID, ENCLOSURE,
TRACKER, CONTACT,
UW

SIZE

DWG. NO.

REV

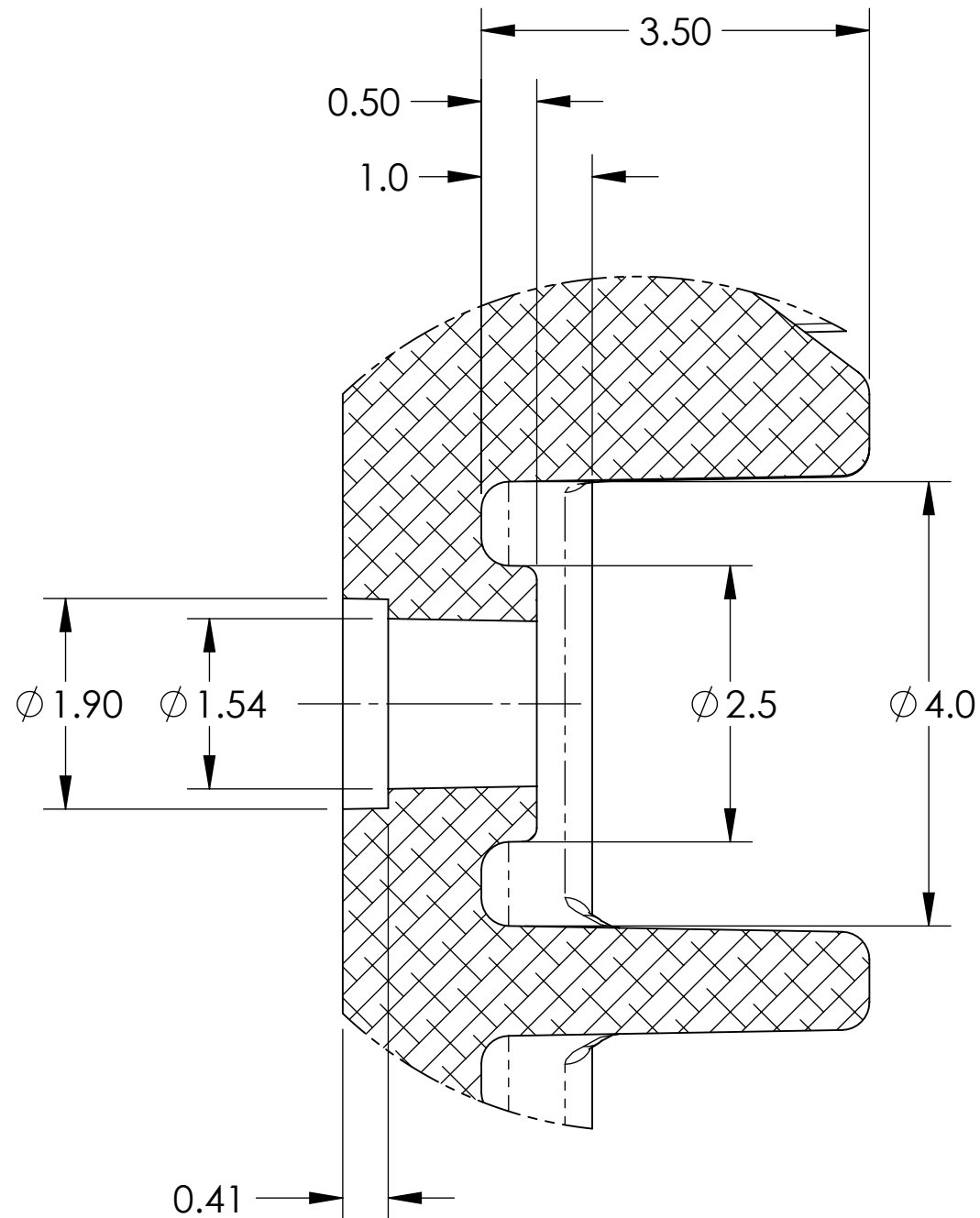
C

USG-1516

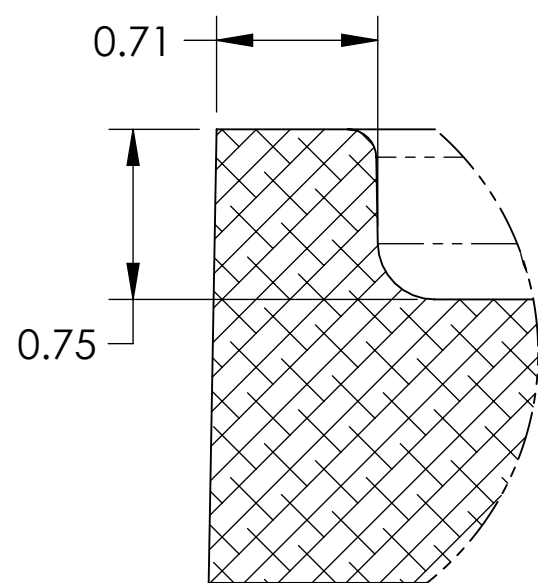
P1.H

DO NOT SCALE DRAWING

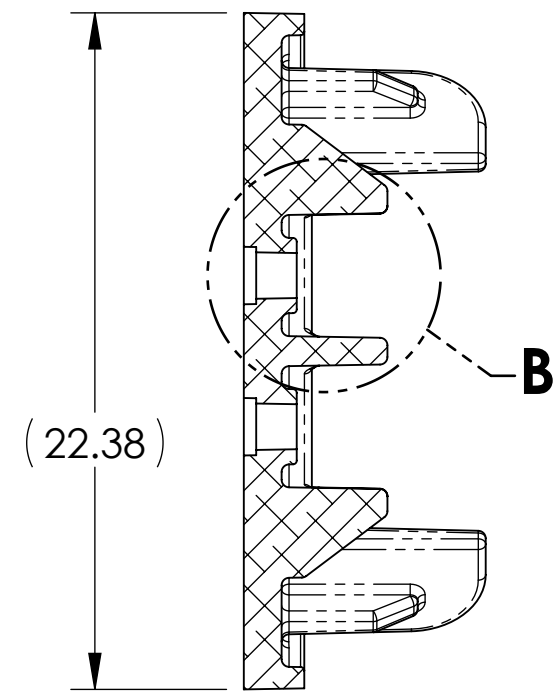
SHEET 1 OF 2



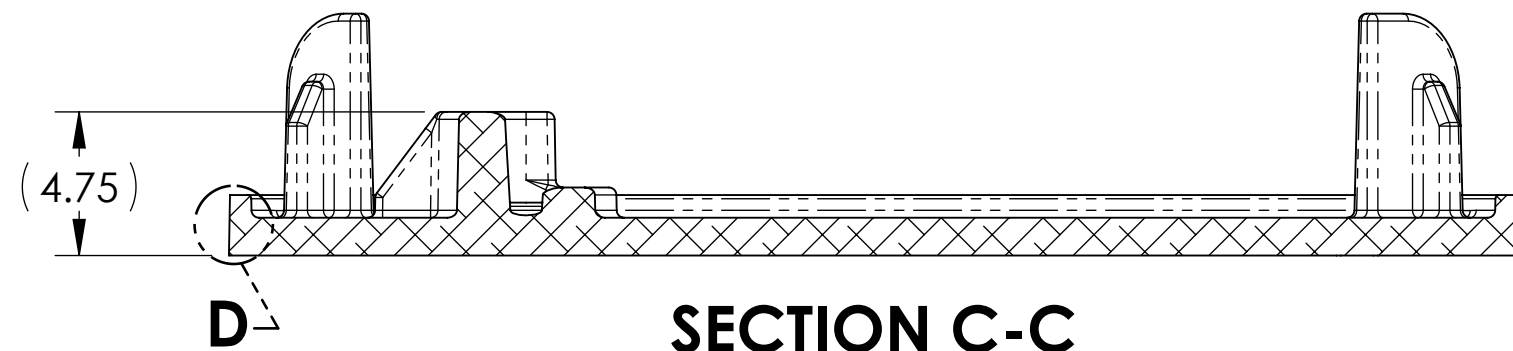
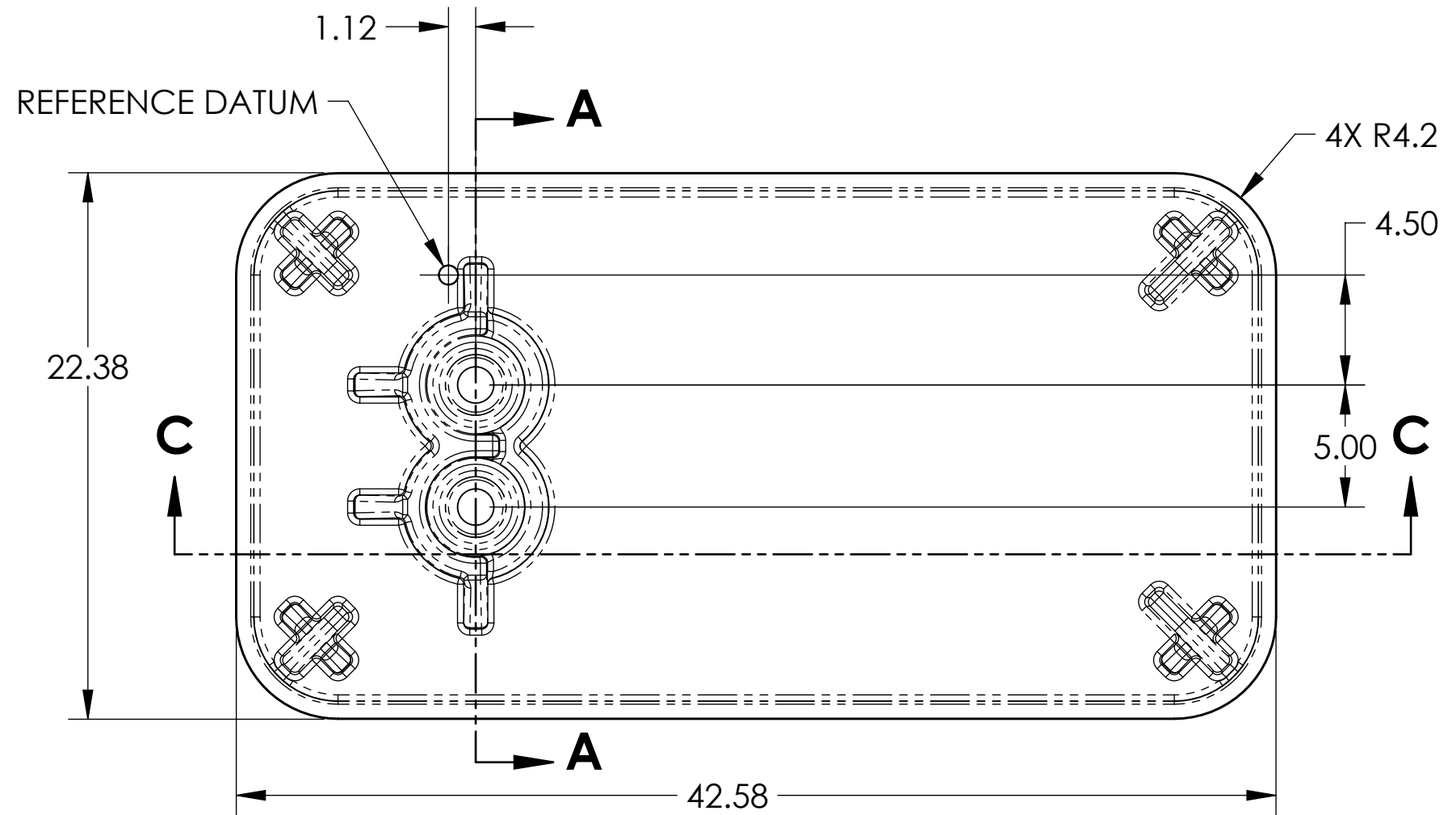
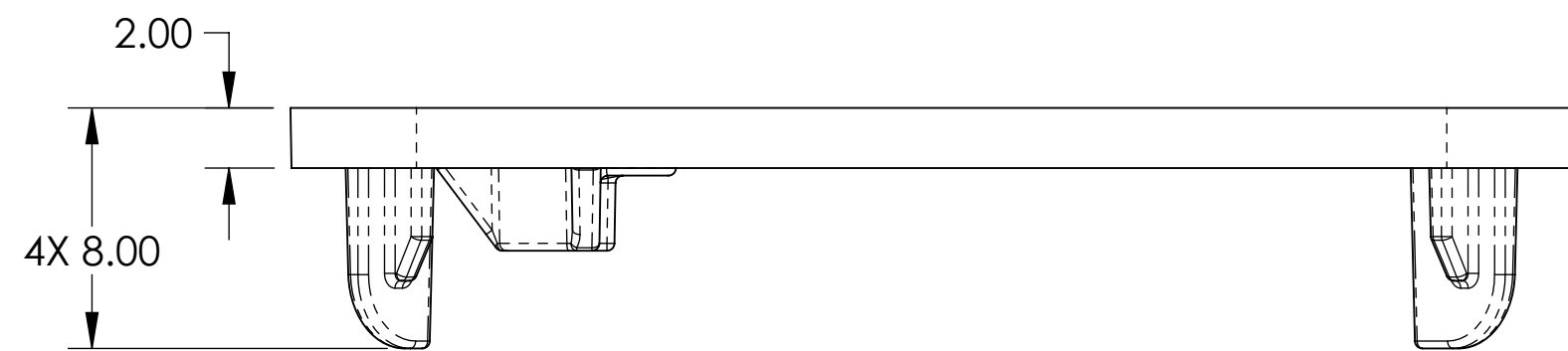
**DETAIL B
SCALE 16 : 1**



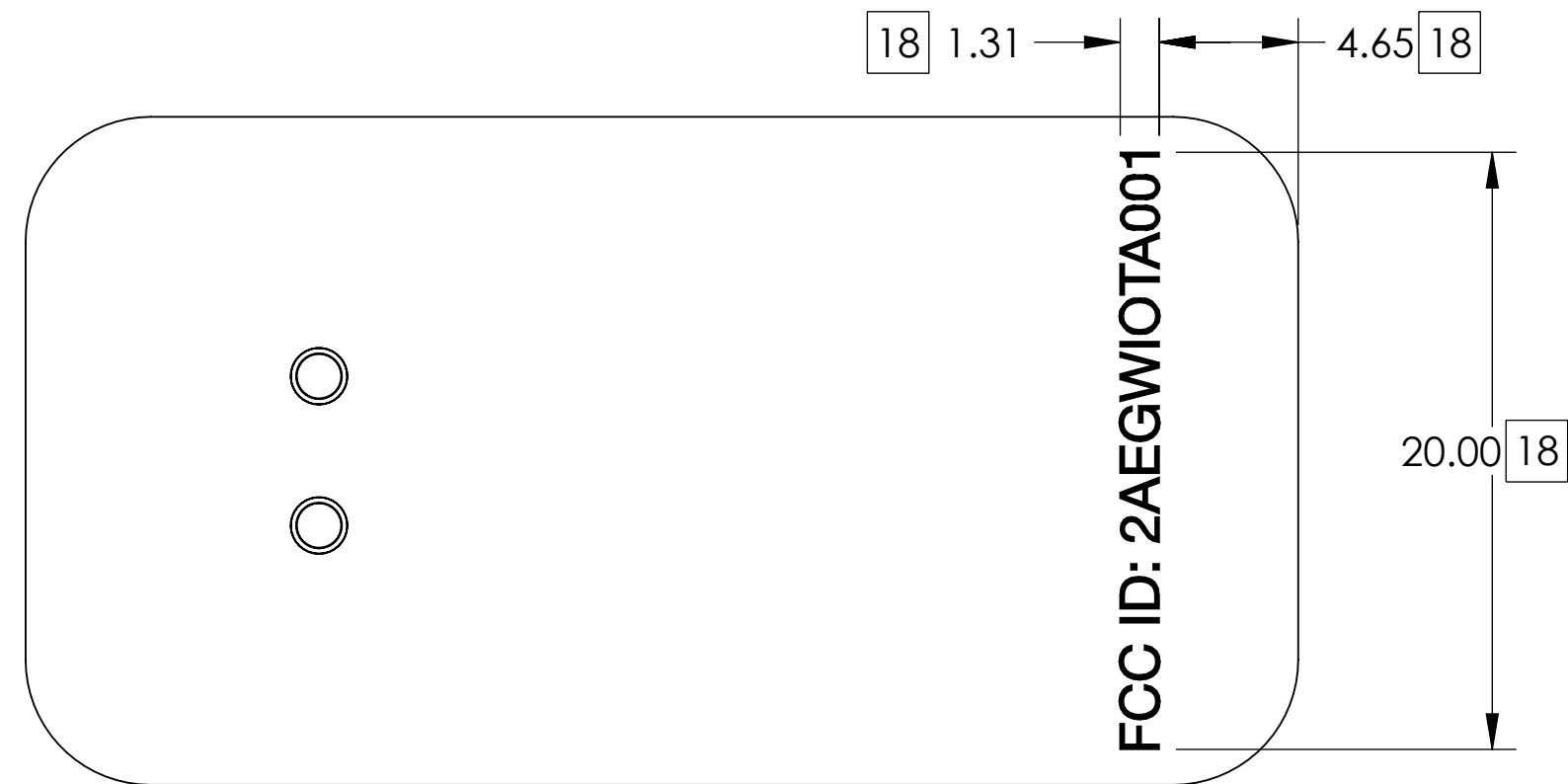
**DETAIL D
SCALE 30 : 1**



SECTION A-A



SECTION C-C



TITLE: LID, ENCLOSURE, TRACKER, CONTACT, UW		
SIZE C	DWG. NO. USG-1516	REV P1.H
DO NOT SCALE DRAWING		SHEET 2 OF 2

