

# KeyASIC Kdrive User manual KD01U32004-01

Revision 1.3  
2015/8/26 BY Sharang

Below WiFi connection mode setting flow will apply for users who just receive a new Kdrive and use for 1<sup>st</sup> time

Step 1

1. Power on Kdrive  
(Kdrive will stay at AP mode with default SSID configured by factory)
2. Select 'Configure Kdrive' on Kolno left navigation drawer



Step 2

- 2.1. 2.2 On User set-up, search and select the K-Drive the user wants to set-up



Step 3

Select one SSID/ key-in password to connect Kdrive to the Access Point

Step 4



- 4.1. Input user defined Kdrive name to register in server
- 4.2. Server check created device name to validate no confliction.



Step 5

- 5.1 User Hits Finish Backend
  1. Klono connects to Kdrive on AP mode (**Internet break**)
  2. Makes call to K-drive to save SSID and password user has entered
  3. Both Klono and Kdrive disconnects from AP mode and connects to AP-Client mode
- 5.2-Confirmation Message



Step 6

-Kdrive can now be accessed from Klono Homepage

### Important Points-

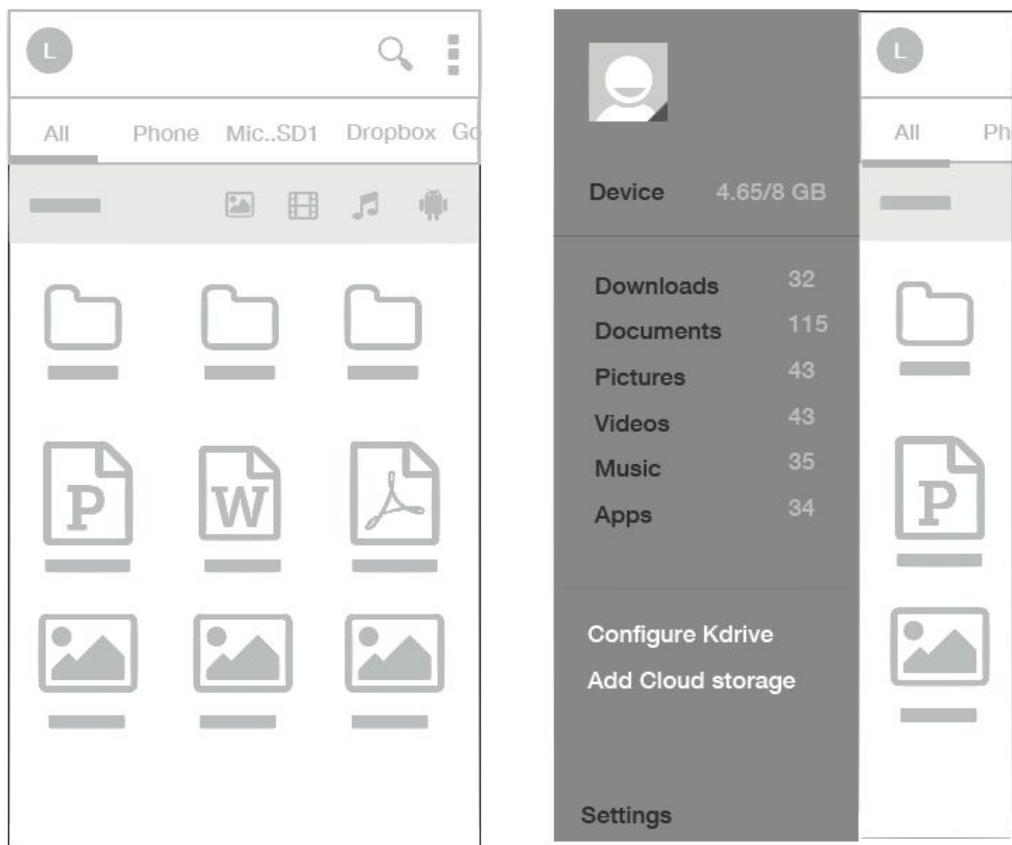
1. Smartphone or tablet should have WiFi or 3G connection to do below settings.
2. User isn't surrounded by multiple K-Drives needed to be configured for first time. If she does(rare case-the user buys multiple k-drives) it's important to inform her to switch on the drive she wants to configure firstly and so on.
3. Multiple new K-drives could be configured and added to Klono Homescreen in the same way.
4. After K-drive is registered and configured with the server, it could be shared by the first user to other contacts by giving permissions just like google drive/drop-box permissions.
5. Protecting and sharing the drive through password is cumbersome experience(discussed on call) incase the first time user wants to unshare the K-Drive with other contacts. She has to do it by inputting new password every time.
6. STEP-5. We believe we could call all the information the user has input to K-drive at a one time to save Internet break time. Everything happens for a short time without user knowing the complexities

LOW FIDELITY MOCKUPS (below)



## Step-1

1. Power on Kdrive  
(Kdrive will stay at AP mode with default SSID configured by factory)
2. Select 'Configure Kdrive' option on left navigation drawer

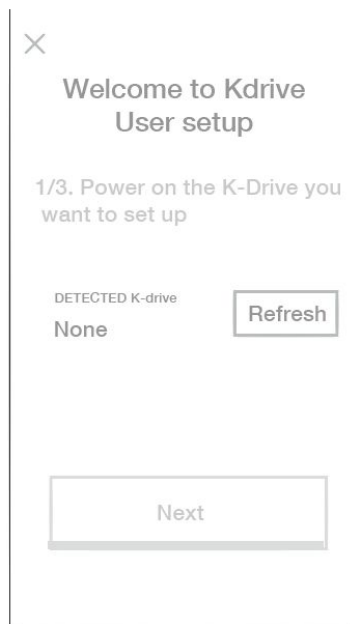


STEP-1

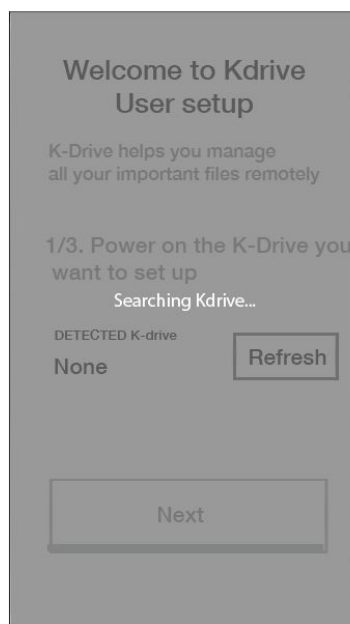


## Step-2

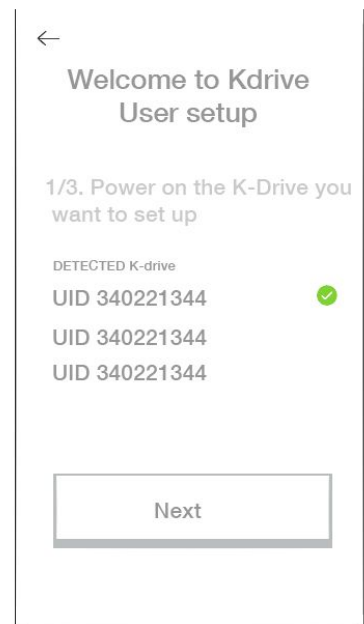
2.1. Search for K-drives  
2.2 Select the K-Drive the user wants to set-up



STEP-2.1



STEP-2.2



STEP-2.3

### Error states(1)

1. No Internet connection
2. K-Drive not detected

Step-3

3.1 Select one SSID/ key-in  
password to connect Kdrive to  
the Access Point  
3.2 input password

← Welcome to Kdrive  
User setup

2/3. Select the Wifi network  
you want your K-Drive to be  
connected

Auto detected Wifi on your Mobile

Sharang's home ▼

INPUT PASSWORD

Connect

STEP-3.1

← Welcome to Kdrive  
User setup

2/3. Select the Wifi network  
you want your K-Drive to be  
connected

Auto detected Wifi on your Mobile

Sharang's home ▼

INPUT PASSWORD

Connect

Other wifi networks

41-C

Jon's home

Virus wifi

Delkin 230

STEP-3.1 (optional)

← Welcome to Kdrive  
User setup

2/3. Select the Wifi network  
you want your K-Drive to be  
connected

Auto detected Wifi on your Mobile

Sharang's home ▼

INPUT PASSWORD

Connect

Keyboard

STEP-3.2

Error States (3.2)  
1. Kdrive disconnects (Go to Step-1)  
2. Wrong Password (Same screen)  
Input password again

#### Step-4

- 4.1.,Input user defined Kdrive name to register in server
- 4.2. Server checks created device name to validate no confliction.

←

Welcome to Kdrive  
User setup

3/3. Add a unique name to  
your device

INPUT NAME

Sh

Detecting...

Save and Finish


Keyboard

STEP-4.1

←

Welcome to Kdrive  
User setup

3/3. Add a unique name to  
your device

INPUT NAME

Sharang's Work

✓

Save and Set up

STEP-4.2

Step-5

4.2 User Hits 'Save and set up'

5.1 Backend

1. Klono connects to Kdrive on AP mode (**Internet break**)
2. Makes call to K-drive to save SSID and password user has entered
3. Both Klono and Kdrive disconnects from AP mode and connects to AP-Client mode

5.2-Confirmation Message

←

Welcome to Kdrive  
User setup

3/3. Add a unique name to  
your device

INPUT NAME

Sharang's Work ✓

Setting up your K-Drive...

Save and Set up

STEP-5.1

←

Welcome to Kdrive  
User setup

3/3. Add a unique name to  
your device

Your K-Drive 'SHarang's Work'  
is successfully configured

Go to Homepage

STEP-5.2

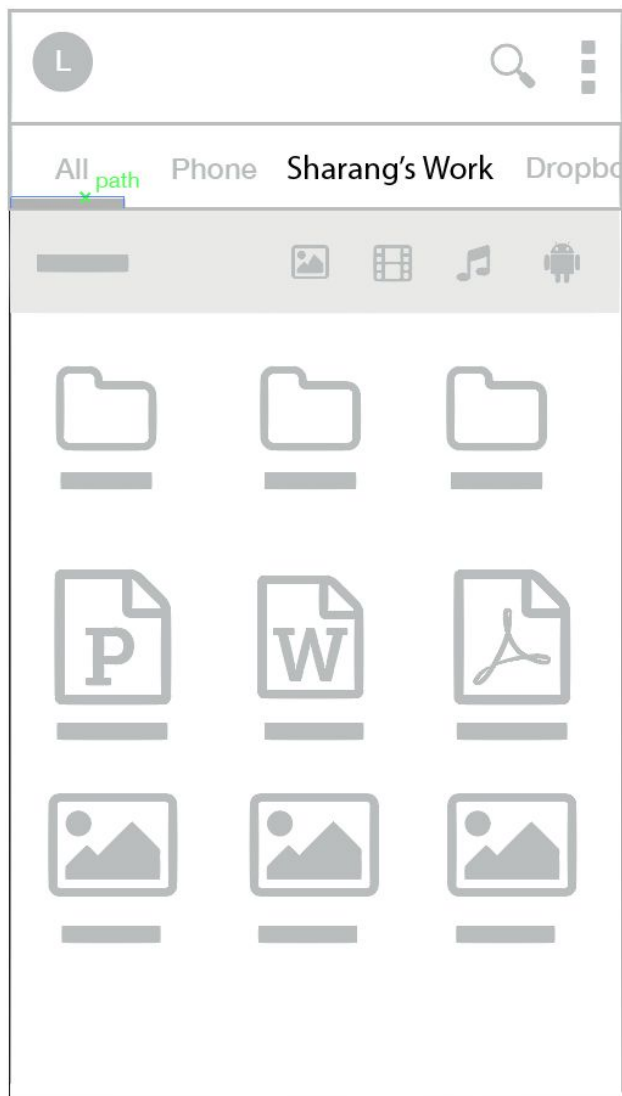
Error states(4.3)

1. No Internet connection
2. Something went wrong.  
Retry Saving



Step-6

-Kdrive can now be accessed  
from Klono Homepage



#### FCC Statement:

##### Federal Communication Commission Interference Statement

This equipment has been tested and found to comply with the limits for a Class B digital device, pursuant to Part 15 of the FCC Rules. These limits are designed to provide reasonable protection against harmful interference in a residential installation. This equipment generates, uses and can radiate radio frequency energy and, if not installed and used in accordance with the instructions, may cause harmful interference to radio communications. However, there is no guarantee that interference will not occur in a particular installation. If this equipment does cause harmful interference to radio or television reception, which can be determined by turning the equipment off and on, the user is encouraged to try to correct the interference by one of the following measures:

- Reorient or relocate the receiving antenna.
- Increase the separation between the equipment and receiver.
- Connect the equipment into an outlet on a circuit different from that to which the receiver is connected.
- Consult the dealer or an experienced radio/TV technician for help.

FCC Caution: Any changes or modifications not expressly approved by the party responsible for compliance could void the user's authority to operate this equipment.

This device complies with Part 15 of the FCC Rules. Operation is subject to the following two conditions: (1) This device may not cause harmful interference, and (2) this device must accept any interference received, including interference that may cause undesired operation.

For product available in the USA/Canada market, only channel 1~11 can be operated. Selection of other channels is not possible.

This device and its antennas(s) must not be co-located or operating in conjunction with any other antenna or transmitter except in accordance with FCC multi-transmitter product procedures.

#### NCC警語:

經型式認證合格之低功率射頻電機，非經許可，公司、商號或使用者均不得擅自變更頻率、加大功率或變更原設計之特性及功能。  
低功率射頻電機之使用不得影響飛航安全及干擾合法通信；經發現有干擾現象時，應立即停用，並改善至無干擾時方得繼續使用。前項合法通信，指依電信法規定作業之無線電通信。低功率射頻電機須忍受合法通信或工業、科學及醫療用電波輻射性電機設備之干擾。