



## Enter TWS Pairing

- 1 If left and right earphones have not been paired, the earphones will directly enter the TWS pairing mode when turned on.
- 2 When off, long press one of the earphone for 5 seconds to enter pairing mode.

## Power On/Off

- 1 In the power-on state, Long press the MFB button of one of the earphone for 3 seconds to start up or shut down.
- 2 Take earphones out of the charging case, it will automatically turned on and connected. Put the earphones back into the charging case to recharge, and the earphones automatically shuts down.

## OSTIA Control

▶   Play / Pause	x1	or	x1
◀◀ Previous Track	x2		
▶▶ Next Track			x2
☎ Answer Call	x1	or	x1
☎ End Call	x1	or	x1
✖ Reject Call	x2	or	x2
🗣 Enable Voice Assistant	x3	or	x3
🗣 Disable Voice Assistant	x1	or	x1

## Basic Function

### Starting Up

1. In the power-off state, long press the MFB button of left or right earphone at same time for about 3 seconds to start up
2. Take earphones out of the charging case(disconnect the charging), and it can be automatically turned on and connected

### Power Off

1. In the power-on state, Long press the MFB button of left earphone and right earphone for about 3 seconds to shut down
2. Put the earphones into the charging case to recharge, and the earphones automatically shuts down

### TWS reconnection

TWS already exists in the pairing state,then when the left and right headphones are turned on, the TWS will automatically reconnect.

### Pairing overtime

Enter normal pairing mode for 2 minutes, if no operation, bluetooth automatically shut down.

### Auto power-off

1. If there is no connection within 2 minutes, the earphones will automatically turn off.
2. Disconnect the phone and if there is no operation, it will automatically shut down after about 2 minutes.

### Clear the pairing information between headphones.

When power off, long press 15S to clear the pairing information between the earphone and earphone .

## Call

### Answer the calls

Short click MFB button to answer incoming calls

### Refuse to answer

Double click MFB button to reject the call

### Hang up

When the call is finished, single click the MFB button to end the call

### Three-way call 1, hang up the current call to answer the new call

If there is a new call in the call, single click the MFB button to hang up the current call and single click MFB button again to answer the new call.  
This function requires mobile phone support.

### Three - way call 2, keep current call to answer new calls

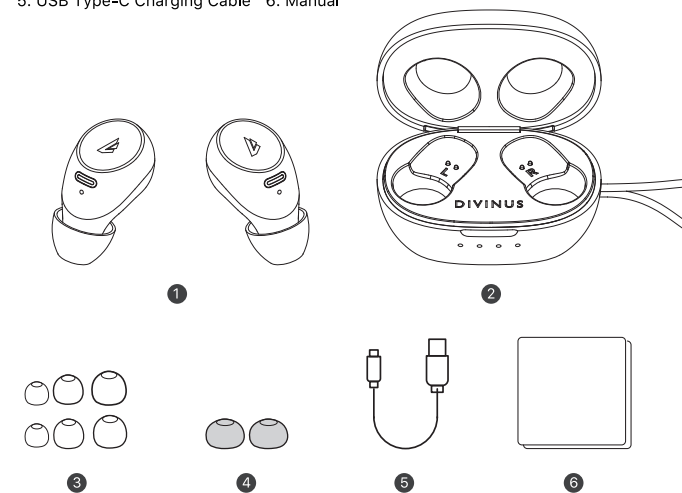
If there is a new call in the call, long press the MFB button for one second to maintain the current call and answer the new call.  
This function needs mobile phone support.

### Three-way call 3, switching between two calls

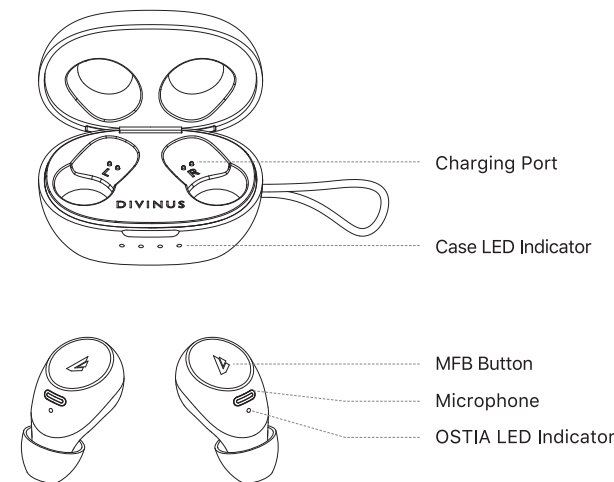
In the state of three-party call, long press the MFB button for one second to maintain the current call, switch to the maintained call, and switch between two calls.  
This function needs mobile phone support.

## Accessories

1. OSTIA 2. Charging Case 3. Silicon Eartips 4. DEKONI Foam Tips  
5. USB Type-C Charging Cable 6. Manual



## Device Layout



### FCC WARNING

This device complies with part 15 of the FCC Rules. Operation is subject to the following two conditions:

- (1) This device may not cause harmful interference, and
- (2) this device must accept any interference received, including interference that may cause undesired operation.

Any changes or modifications not expressly approved by the party responsible for compliance could void the user's authority to operate the equipment.

### FCC Radiation Exposure Statement:

This equipment complies with FCC radiation exposure limits set forth for an uncontrolled environment . This transmitter must not be co-located or operating in conjunction with any other antenna or transmitter.