

Radenso

XP

High Performance Long Range Radar Detector



User Manual

Radar Detector *Radenso XP*

Foreword

Congratulations on your new investment. The Radenso XP was designed to deliver class leading radar detection performance on all radar bands coupled with the best false alert filtering in the industry. The built-in GPS feature lets you lockout known false alerts or you can mark your own Points of Interest for future alerts. The world-class directional GPS database includes all known Redlight- and speed cameras in North America and is updated monthly. For radar alerts choose between standard bar graph display, Frequency display or Threat display.

Radenso XP features:

- LNA equipped antenna board for highest possible sensitivity on all bands
- GPS enabled
- RJ11 power connection
- Bright Red OLED display
- Selectable radar bands (X, K, Ka band)
- Ka band segmentation (10 segments)
- K narrow band
- Selectable Ka POP radar band (ON/OFF)
- Low power / low frequency K band detection
- BSM / CAS filter to eliminate falsing from newer cars
- Separate TSR filter to eliminate falsing from Traffic sensors
- 3-digit frequency display to accurately report detected radar frequencies
- Multiple Threat display
- AutoMute with selectable Mute volume
- Low Speed muting (X and K band only)
- MUTE Mode to MUTE K and X Band until manually unmuted
- Highway, City and AutoCity Mode
- AutoCity Mode with selectable speed increments and filter levels for each band
- Fully directional world class RLC/speed camera database with free monthly updates
- Free firmware / database updates for life
- Voice alerts with 260 different messages
- Alert frequency voice announcement
- GPS lockouts
- Test Mode (full sensitivity, no filtering, no signal lag)
- 6 driving mode selections (speed and compass, speed and time, speed and voltage, Voltage, Time, Speed)
- VG2 undetectable / nearly undetectable by Spectre IV / Elite (less than 15 feet detection range)
- Optional Direct Wire power cord available
- 1 year manufacturer warranty.

Quick Start up Guide

To start using your *Radenso XP* radar detector follow these easy steps:

1. Slide the windshield mounting bracket into the QuickMount slot at the front of the radar detector.
2. Plug the RJ11 plug of the power cord power jack on the Radenso XP on the left side and connect the large plug with the 12V power socket in your car.
3. Press the Power button (middle upper button on top of unit) for 2 seconds to turn on *Radenso XP*.
Unit will power up with a brief start-up sequence. After a few seconds, the Radenso XP will notify you with a voice message that the satellite is connected.
4. Adjust the volume level by pressing the volume buttons "**Vol +**" or "**Vol -**".

Change Default settings:

Radenso XP is now ready to go. If you want to change any of the default settings of your unit please refer to the next pages.

Main functions of *Radenso XP*

The *Radenso XP* is a very powerful windshield mounted radar detectors. It's designed to protect the driver from speeding tickets/fines. The Radenso XP communicates with the driver in English by text and voice messages and its main functions are the detection of microwave radars (X / K / Ka bands), laser guns, red light cameras and fixed-speed cameras (GPS database).

Notifications:

When a radar signal is detected, the driver will be alerted by a visual text warning and a voice/tone alert. The display and voice alert will indicate the detected radar band, frequency and signal strength. A beeping warning tone will increase its intensity with increasing signal strength. The signal strength has 9 levels. GPS alerts are reported by voice and text; for example "Speed Camera".

Function of Control Buttons



Button Operation

1. [CITY]

- 1.1. Short press : Change City Mode(HIGHWAY -> CITY -> AUTO CITY)
- 1.2. Press and hold for 2 seconds : Volume Down

2. [MARK]

- 2.1. Short press : Add or delete User Point up to maximum 100 points, pressing button during RLC alert will permanently MUTE the alert
- 2.2. Press and hold for 2 seconds : Volume Up (from 0 to 9 level)

3. [MUTE]

- 3.1. Short press : Change Mute Mode (Mute On <-> Mute Off) (MUTE On will Mute all X and K signals)
- 3.2. Press and hold for 2 seconds : Add or delete Lockout location(200 points)

4. [POWER]

- 4.1. Short press : Power On/Off
- 4.2. Press and hold for 2 seconds to enter Menu Mode

Menu Mode

1. Press and hold **POWER** button for 2 seconds to enter Menu Mode.

2. Menu List (Beginner Mode)

Menu List	Menu Setting
Brightness Mode	Bright <-> Dim <-> Dimmer <-> Dark <-> Smart Dark
User Mode	Beginner <-> Expert
X Band Mode	On <-> Off
K Band Mode	Wide <-> Narrow
Ka Wide Band Mode	On <-> Off
Laser Mode	On <-> Off
TSR Filter Mode	On <-> Off
Driving Display Mode	Speed/Compass <-> Speed/Time <-> Speed/Voltage <-> Voltage <-> Time <-> Speed
Unit Mode	English <-> Metric
GMT Mode	-12 ~ 0 ~ +12
Low Speed Mute Mode	Off , 5, 10, 15, 20, 25, 30, 35, 40, 45, 50, 55 mph or Off , 10, 20, 30, 40, 50, 60, 70, 80, 90 kmph
User Point All Delete Mode	
Lockout All Delete Mode	
Firmware Version Mode	
Database Version Mode	
Factory Reset Mode	
Exit	

3. Menu List (Expert Mode)

Menu List	Menu Setting
Brightness Mode	Bright <-> Dim <-> Dimmer <-> Dark <-> Smart Dark
User Mode	Beginner <-> Expert
X Band Mode	On <-> Off
K Band Mode	Wide <-> Narrow <-> Off
Ka Wide Band Mode	On <-> Off
Ka1 Mode (33.392 - 33.704 Ghz)	On <-> Off
Ka2 Mode (33.704 - 33.896 Ghz)	On <-> Off
Ka3 Mode (33.886 - 34.198 Ghz)	On <-> Off
Ka4 Mode (34.184 - 34.592 Ghz)	On <-> Off

Ka5 Mode (34.592 - 34.808 Ghz)	On <-> Off
Ka6 Mode (34.806 - 35.166 Ghz)	On <-> Off
Ka7 Mode (35.143 - 35.383 Ghz)	On <-> Off
Ka8 Mode (35.378 - 35.618 Ghz)	On <-> Off
Ka9 Mode (35.595 - 35.835 Ghz)	On <-> Off
Ka10 Mode (35.830 - 35.998 Ghz)	On <-> Off
Laser Mode	On <-> Off
POP Mode	On <-> Off
BSM Filter Mode	On <-> Off
TSR Filter Mode	On <-> Off
AutoMute Mode	0% , 20%, 40% , 60%, 80%
UNIT Mode	English <-> Metric
City Mode Filter	X Filter : 0 ~ 90% (Default 40%) K Filter : 0 ~ 90% (Default 20%) Ka Filter : 0 ~ 90% (Default 0%)
Low Speed Mute & City Mode Speed Mode	Low Speed Mute Set : Off , 5, 10, 15, 20 , 25, 30, 35, 40, 45, 50, 55 mph or Off, 10, 20, 30 , 40, 50, 60, 70, 80, 90 kmph
	City Speed Set : 10, 15, 20, 25, 30, 35, 40 , 45, 50, 55, 60 mph or 10, 20, 30, 40, 50, 60 , 70, 80, 90, 100 kmph
Display Mode	Standard <-> Frequency <-> Threat
Driving Display Mode	Speed/Compass <-> Speed/Time <-> Speed/Voltage <-> Voltage <-> Time <-> Speed
GMT Mode	-12 ~ 0 ~ +12
Red Light Camera Mode	On <-> Off
Speed Camera Mode	On <-> Off
Red Light & Speed Camera Mode	On <-> Off
User Point Mode	On <-> Off
GPS Warning Distance Mode	Normal <-> Farther <-> Farthest
Voice Mode	On <-> Off
Test Mode	On <-> Off
User Point All Delete Mode	
Lockout All Delete Mode	
Firmware Version Mode	
Database Version Mode	
Factory Reset Mode	
Exit	

4. Menu Control buttons

4.1. **[MARK]** button: Toggle downward

4.2. **[CITY]** button: Toggle upward

4.3. **[POWER]** button : change Menu setting or execute Menu function forward

4.4. **[MUTE]** button : change Menu setting or execute Menu function backward

5. Exit Menu

5.1. Select “Exit” in Menu

5.2. Press and hold POWER button for 2 seconds

5.2. Automatically exit Menu If there is no button operation in Menu mode for 20seconds.

Factory Reset

1. Select FACTORY RESET in the Menu to reset all settings to the factory defaults except GMT setting.

User Setting Memory

1. All features selected are retained in the memory.

2. Mute on is not stored in the memory so Unit stays Mute Off (Default) after Power Reset.

GPS Connection Message

: GPS Connection Message displays with a voice when GPS is initially connected after Power On.

A black rectangular box with the text "GPS CONNECTED" in a stylized, glowing orange and yellow font.

User Point

1. Press [MARK] button to register or delete User point.

2. You can register up to 100 user points.

User Point All Delete

You can select “User Point All Delete” in the Menu to delete all User points registered in the memory.

Alarm Priorities

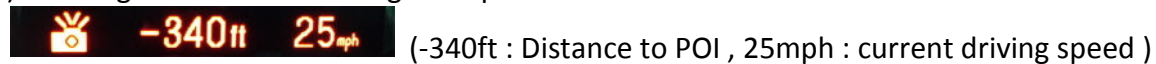
1. POI Detect Alarm and POI Pass Alarm
2. Laser
3. Ka Band
4. K Band
5. X Band
6. POI Limit Speed Alarm

POI Alert (DB Point / User Point)

1. POI alert announces when DB Point or User Point is detected.
2. POI alert

2.1 Display POI alert icon, Distance to the POI and current driving speed with a voice alert. .

- 1) Red Light Camera or Red Light & Speed Camera



- 2) Speed Camera



- 3) User Point



2.2. Display POI Pass message with a voice alert when passing by POI point.

- 1) Red Light Camera or Red Light & Speed Camera



- 2) Speed Camera



- 3) User Point



2.3. No alert goes off when exiting from POI area without passing by POI.

3. POI Warning Distance

Normal : 800ft (250m)

Farther : 1250ft (400m)

Farthest : 1650ft (500m)

4. POI Direction Type
 - 4.1. DB Point : All-direction, Two-direction, Single-direction
 - 4.2. User Point : Single-direction
5. POI alert operates only when GPS is connected.

GPS Lockout

1. Mute audio alerts (Voice/Beep) for Radar within a 300m radius of the Lockout locations.
2. Lockout display
 - 2.1. Enter Lockout location : “ Lockout” is shown in the lower right corner of the display.



- 2.2. Exit Lockout location : “Lockout” disappears.



3. POI alert operates only when GPS is connected.
4. Press and hold [MUTE] button for 2 seconds to store or delete Lockout location (up to 200 points)
5. Select “Lockout All Delete” in the Menu to delete all Lockout locations registered in the memory.

POI Limit Speed Alarm

1. POI Limit Speed Alert operates when driving speed is over the POI speed limit.
2. POI Limit Speed alert message displays with a voice (Voice on) or beep (voice off).



3. The current driving speed blinks as below with alert sounds until driving speed is under POI speed limit



Auto City Mode

1. Select Auto City Mode in Driving mode.
2. Auto City Mode operates as below.

2.1. All radar alerts on X and K bands are completely muted and only displayed if vehicle's speed is lower than Left speed setting (Low Speed Mute). It does NOT mute Ka and Laser alerts.

2.2. Radar detector operates in City mode with reduced radar sensitivity set in City Mode Filter if vehicle's speed is between Left speed setting (Low Speed Mute) and Right speed setting (City Mode Speed).

2.3. Maximum detector sensitivity will be achieved above Right speed setting (City Mode Speed). Radar detector operates with maximum sensitivity (Full sensitivity on all bands) if vehicle's speed is over Right speed setting.

Auto City Mode setting :



3. City Filter and City Mode Speed settings are always default in Beginner Mode.

4. City Filter and City Mode Speed settings can be changed in Expert Mode only.

Low Speed Mute

1. All radar alerts on X and K bands are completely muted and only displayed if vehicle's speed is lower than Low Speed Mute Setting. However, it does NOT mute Ka and Laser.

2. Low Speed Mute Setting

1) English : Off , 5, 10, 15, 20, 25, 30, 35, 40, 45, 50, 55 mph(Default : 20 mph)

2) Metric : Off, 10, 20, 30, 40, 50, 60, 70, 80, 90 kmph (Default : 30 kph)

GPS Error Message

GPS error message displays if the unit does not receive GPS signals for 30 seconds.



AutoMute Mode

AutoMute Mode : Selectable Mute volume 0%, 20%, 40%, 60%, 80% of alert volume

1. Radar(X, K, Ka) / POI Limit Speed : Current volume level stays for the first 3 seconds after the alarm starts, and reduces to the current volume according to your volume selection. AutoMute is not applicable to Laser alerts.

2. AutoMute ends 10 seconds after the alarm ends. If the same radar is detected or the same POI Limit Speed alert begins within 10 seconds, the unit keeps AutoMute On

3. If a different band signal is detected or a different POI Limit Speed alert begins during AutoMute on, AutoMute will be off and revert to the current volume level.

Mute Mode

Pressing the MUTE button during an alert will temporarily mute the detected signal and will automatically unmute 20 seconds after the signal has passed or if a new and/or different signal has been detected.

Pressing the MUTE button without the presence of an alert will permanently mute the detector on X and K band until either manually unmuted or after a new power-up cycle. Ka band Laser will NOT be muted in this Mode.

Laser / Radar Alert

1. Display for Laser/Radar Alert

1.1. Laser



1.2. X Band

1.2.1. Standard



1.2.2. Frequency



1.3. K Band

1.3.1. Standard



1.3.2. Frequency



1.4. Ka Band

1.4.1. Standard



1.4.2. Frequency



Threat Display

If the detector detects more than one signal, the additional received signals will also be displayed. The display will show the three strongest signals with priority $Ka > K > X$.



Ka5 K9

Brightness Mode

Brightness of the display is selectable as below.

1. BRIGHT Full brightness
2. Dim Reduced brightness
3. Dimmer Further reduced brightness
4. Dark : The display turns off (Completely dark). The display turns on (Bright) only when a button is pressed.
5. Smart Dark: The display turns off (Completely dark). The display turns on (Bright) when a button is pressed or an alert is received.

DB Update

Connect Unit to PC by USB cable and use DB Update Manager (PC Program) to download POI DB Points (Store up to 60,000 points). The DB Update Manager can be found at the Update section of the Radenso Homepage <http://radenso.com>

Firmware Update

Connect Unit to PC by USB cable and use Firmware Update Manager (PC Program) to download a new firmware if available. The Firmware Update Manager can be found at the Update section of the Radenso Homepage <http://radenso.com>

Troubleshooting

Problem	Root cause / Corrective action
The detector will not turn on	<ul style="list-style-type: none"> - Check if power cable is connected - Turn on ignition - Check the fuse located at the tip of the plug
Display is not turning on	<ul style="list-style-type: none"> - Power cable is disconnected or switch has not been turned on - Display is set to "Dark" Mode or "Smart Dark"
The detector alerts visually but there are no voice or audio alerts	<ul style="list-style-type: none"> - The alert volume is turned down. Increase volume - Speed Muting has been activated. Check the menu settings
The windshield mount does not adhere to the windshield	<ul style="list-style-type: none"> - Clean the suction cups and windshield
The detector alerts to a signal but no police radar trap can be located	The detector could have received a false signal from a motion sensor. Lockout the known false locations by pressing and holding the MUTE button during the alert
The unit suddenly alerts with high intensity while driving on the Interstate although there is no police in sight	<ul style="list-style-type: none"> - Radar operated Traffic sensors are in place along your road. Turn on the Traffic Sensor Rejection filter in the Menu (TSR)
The detector starts alerting with low intensity following another vehicle	<ul style="list-style-type: none"> - The vehicle in front of you is equipped with Blind Spot Mirror or Lane Assist feature. Turn on the BSM filter in the Menu
<i>Radenso XP</i> did not alert to approaching police vehicle	<ul style="list-style-type: none"> - The officer is not operating radar equipment - One or more radar bands have been deactivated. Check in the Menu if all radar bands used in your area are turned on - You may have activated a speed limit in the menu and you were traveling below the set speed limit
<i>Radenso XP</i> <u>never</u> alerts to radar or the alarm turns on after passing the radar source	<ul style="list-style-type: none"> - Your vehicle might be equipped with a metal coated windshield that prevents the reception of radio waves. Check with your local dealer - The speed limit setting in the Menu has been set above normal travel speed. Turn off speed limit setting or set to a lower speed
The unit did not alert to a Red-light or Speed camera	<ul style="list-style-type: none"> - Redlight and/or Speedcamera have been turned off in the Menu. - The location is not yet stored in the database. Check if a database update is available for upload
The detector alerts to a SpeedCam or Redlight camera but no camera can be found	<ul style="list-style-type: none"> - The location used to have a speed or redlight camera but it was removed - The camera is located on the other side of the road in opposite travel direction

Technical specification

Detector type

Dual conversion super-heterodyne receiver

Linear polarized self-contained antenna

Scanning frequency discriminator

Operating frequency:

Ka Wide: 33.4 GHz - 36.0 GHz

K wide: 24.100 GHz \pm 150 MHz

K narrow: 24.100 GHz \pm 70 MHz

X band: 10.525 GHz (\pm 50 MHz)

Technical parameters:

Operating temperature: -30° - $+185^{\circ}$ ° F

Power Requirement: 11V to 16V DC,
200mA Negative ground

Dimensions: 72(W) x 116(L) x 34(H)mm
2.83 x 4.57 x 1.34 inch

Weight: 8.2 oz. (200 g)

FCC Compliance

This device complies with part 15 of FCC rules: Operation is subject to the following two conditions:

- (1) This device may not cause harmful interference, and
- (2) This device must accept any interference received including interference that may cause undesired operation.

FCC NOTE: CHANGES OR MODIFICATIONS NOT EXPRESSLY APPROVED BY THE MANUFACTURER COULD VOID THE USER'S AUTHORITY TO OPERATE THE EQUIPMENT.

Your Dealer:



One (1) year limited warranty

RADENSO warrants, for one year, to the original retail owner, this RADENSO product to be free from defects in materials and craftsmanship with only the limitations or exclusions set out below.

WARRANTY DURATION: This warranty to the original user is valid for 12 months after the date of original retail sale.

SCOPE OF WARRANTY:

From the date of original consumer purchase and for the respective periods specified above, RADENSO agrees to repair or replace, at its sole expense, all RADENSO brand products purchased directly from RADENSO or from an Authorized RADENSO Dealer, which are defective in material and/or workmanship during ordinary consumer use. Repairs may be completed using new or refurbished parts that meet or exceed RADENSO specifications for new parts. RADENSO, at its sole discretion, may replace a product, with a refurbished or reconditioned unit having comparable features and a limited consumer warranty.

EXCLUSIONS:

IF YOU PURCHASE A RADENSO PRODUCT FROM AN UNAUTHORIZED DEALER, YOUR RADENSO WARRANTY WILL NOT BE VALID.

This Warranty does not apply with respect to the following:

1. Defects or damage caused by accident, fire/smoke, flood/water damage, power surge (or related electrical abnormalities), lightning or other acts of nature.
2. Defects or damage caused by abuse, misuse, negligence, accident, unauthorized product modification or service, or failure to observe the instructions contained in the manual furnished at the time of original purchase.
3. Deterioration/failure due to corrosive atmosphere, including but not limited to; smoke, high humidity or extreme temperature.
4. Damage caused during shipment or handling.
5. Products purchased from anyone other than Radenso or an Independent Radenso Authorized Dealer. If you are uncertain as to whether a dealer is authorized, please contact Radenso's Customer Service
6. Products that have had their serial numbers altered or removed.
7. Products purchased in "AS IS" condition or noted as "DEMO", "DISPLAY", "OPEN BOX", or "CLEARANCE".
8. Products that have been altered or repaired by anyone other than Radenso or a Radenso authorized service station in a manner that has affected their performance, stability or reliability.
9. Accessories attached to or to be used with Radenso products, such as antennas, mounts, cables, etc.
10. Any product attached to or used with the RADENSO product.
11. Packing materials and cosmetic items.
12. Installation and removal of Radenso products from the vehicle.
13. Maintenance, cleaning or periodic check-ups.

OBTAINING OF WARRANTY SERVICE

If, after following the instructions in this Operating Guide, you are certain that the product is defective, pack the product carefully (preferably in its original packaging) and include evidence of original purchase and a note describing the defect. The product should be shipped freight prepaid, by traceable means, or delivered, to warrantor at:

RADENSO RADAR, 744 STABLEWATCH DR, INDEPENDENCE, KY 41051

(859) 803-6413, 9 a.m. to 5.00 p.m., Eastern Time, Monday through Friday