

FCC Label:

Black font printed on 2 mil white polyester
/ 3M LSE permanent adhesive

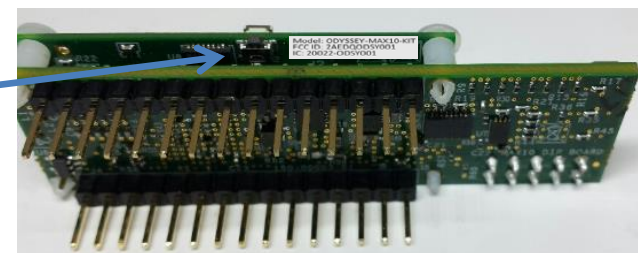
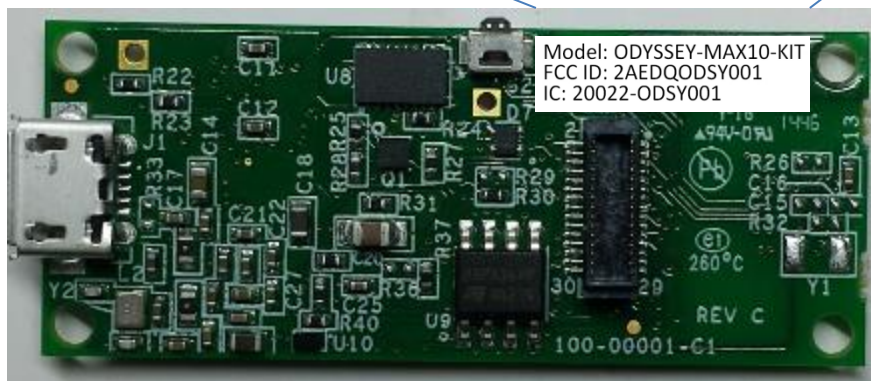
Model: ODYSSEY-MAX10-KIT
FCC ID: 2AEDQODSY001
IC: 20022-ODSY001

4mm

14mm

Location on BLE board

“external” location



Note: Sticker is attached to board with BLE module on it because it is the only product location with available space and the boards are regularly disassembled by the user as part of product use. ID info also provided in User Manual.