

User Guide

SELFIE SHOOT 'N SHARE™

Extendable Monopod
with Wireless Remote
Control Smartphone
Camera Operation



Package Contents



User Guide



USB to Micro-USB
Charging Cable

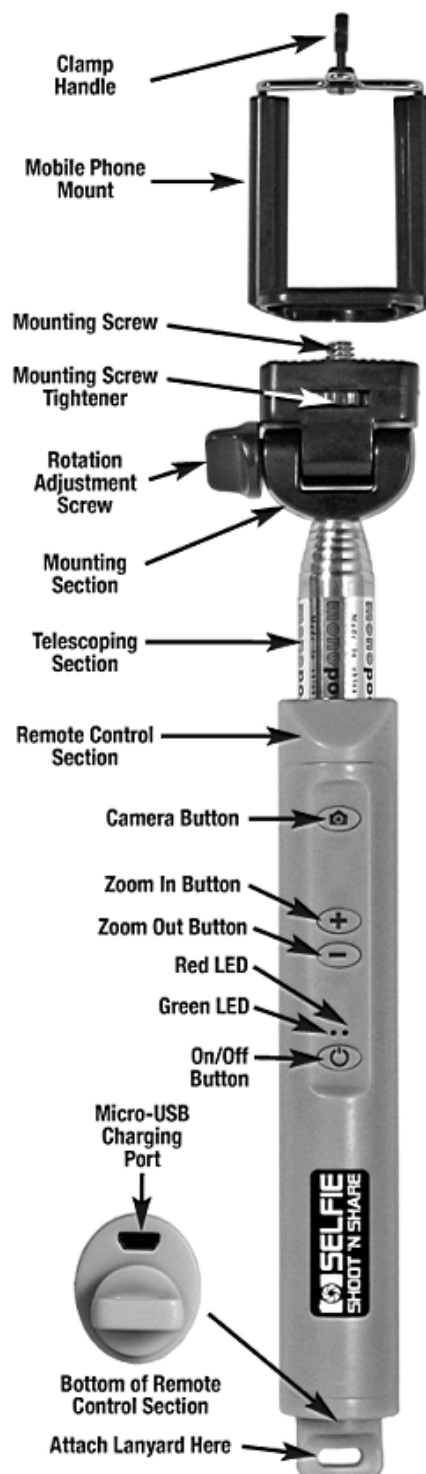


Lanyard

Specifications

- Length: 9" telescopes to 43"
- Bluetooth v3.0 - High speed and low power consumption
- Compatible with Android 2.3.6 and newer and iOS 5.0 and newer
- Automatic Android/iOS selection
- No App installation necessary
- Range: 30' (10 meters)
- Operational Frequency: 2.4Ghz
- Operational Mode: GFSK
- Operational Current: 1mA (0.5mA while in sleep mode)
- Operational Voltage: 3V-4.2V
- Operational Temperature: -10° to 120° F (-12° to 49° C)
- Operational Humidity: 10%-70%
- Battery: 100mAh Lithium-ion

Charging Time: One hour



Before First Use

The Selfie Shoot 'n Share comes from the factory with a partial charge and in most cases can be used right out of the box. However, it is best to make sure that your Selfie Shoot 'n Share is fully charged before first use.

Charging the Selfie Shoot 'n Share

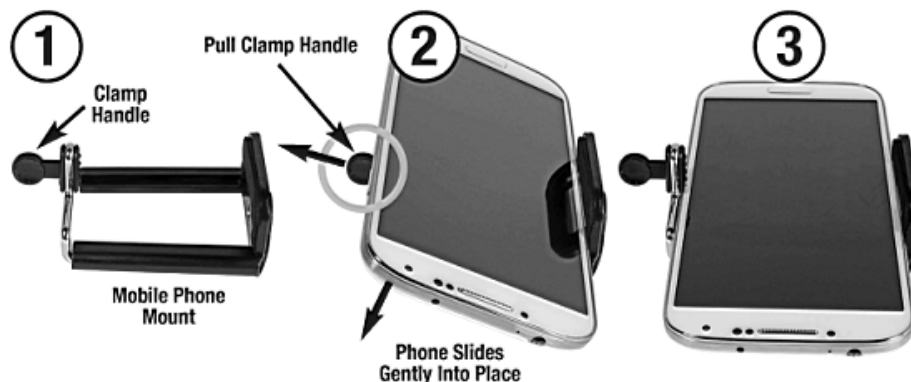
To charge your Selfie Shoot 'n Share, plug the Micro-USB end of the USB to Micro-USB Charging Cable into the Micro-USB Charging Port on the bottom of the Remote Control Section. Plug the other end of the charging cable into a USB-enabled wall charger or an available USB port on your computer. The Red LED will light up. When the unit is fully charged, the Red LED will shut off.



Using the Mobile Phone Mount

In order to use your mobile phone with the Selfie Shoot 'n Share, you must insert it into the Mobile Phone Mount. To do this, follow these directions:

- 1) Lay the Mobile Phone Mount back-down on a smooth, level, and solid surface.
- 2) Lay your mobile phone in place on the mount. Hold the base of the mount with one hand and pull the Clamp Handle with the other until your mobile phone slides gently into place.
- 3) The clamp in the Mobile Phone Mount uses high-tension springs to hold your phone firmly in place. To avoid the possibility of damaging your phone, always check to make sure that your phone is held securely in place before proceeding.





Extending the Telescoping Section

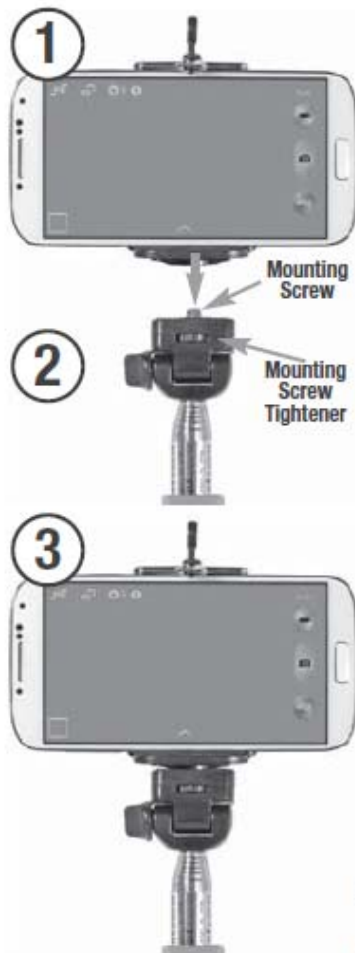
The Selfie Shoot 'n Share has a telescoping section that allows you to extend it from 9" to 43" and any length in between. To extend the Selfie Shoot 'n Share, hold the Remote Control Section in one hand and the black mounting section (just below the Mounting Screw Tightener) in the other. Firmly pull both sections away from each other until the Selfie Shoot 'n Share is extended to the desired length.

FCC Compliance

This device complies with Part 15 of the FCC Rules. Operation is subject to the following two conditions: (1) this device may not cause harmful interference, and (2) this device must accept any interference received, including interference that may cause undesired operation.

Note 1: This equipment has been tested and found to comply with the limits for a Class B digital device, pursuant to part 15 of the FCC Rules. These limits are designed to provide reasonable protection against harmful interference in a residential installation. This equipment generates, uses and can radiate frequency energy and, if not installed and used in accordance with the instructions, may cause harmful interference to radio communications. However, there is no guarantee that interference will not occur in a particular installation. If this equipment does cause harmful interference to radio or television reception, which can be determined by turning the equipment off and on, the user is encouraged to try to correct the interference by one or more of the following measures: a) Reorient or relocate the receiving antenna b) Increase the separation between the equipment and receiver c) Connect the equipment into an outlet different from that to which the receiver is connected d) Consult the dealer or an experienced radio/TV technician for help.

Note 2: Any changes or modifications to this unit not expressly approved by the party responsible for compliance could void the user's authority to operate the equipment.

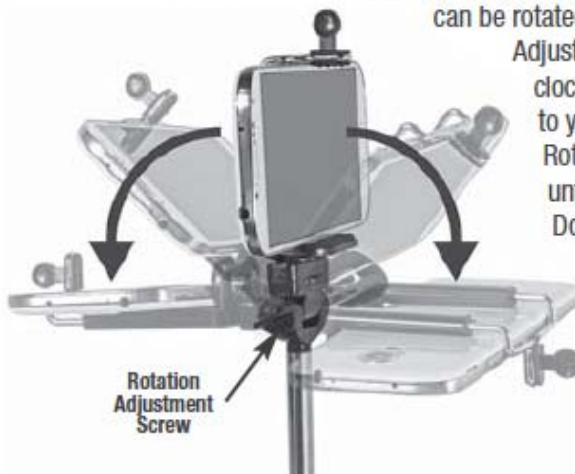


Attaching the Mobile Phone Mount

1) Lay the Mobile Phone Mount back-down on a smooth, level, and solid surface. Lay the Selfie Shoot 'n Share on the same surface, just below the mount so that the hole in the bottom of the Mobile Phone Mount is aligned with the mounting screw on the top of the Selfie Shoot 'n Share.

2) Insert the Mounting Screw into the hole in the bottom of the Mobile Phone Mount and turn the Mounting Screw Tightener to the right until the Mobile Phone Mount is securely attached.

3) To avoid the possibility of damaging your phone, check once again to make sure that your phone is held securely in place in the Mobile Phone Mount and that the Mobile Phone Mount is securely attached to the Selfie Shoot 'n Share before proceeding.



Adjusting the Angle of the Mobile Phone Mount

To make sure you always have the perfect angle for getting the picture you want, the Selfie Shoot 'n Share can be rotated 180°. To do this, loosen the Rotation

Adjustment Screw by turning it counter-clockwise. Adjust the Mobile Phone Mount to your preferred angle and then turn the Rotation Adjustment Screw clockwise until the mount is firmly locked in place.

Do not over-tighten the screw. As always, check to make sure that your phone is held securely in place in the Mobile Phone Mount and that the mount is securely attached to the Selfie Shoot 'n Share before proceeding.

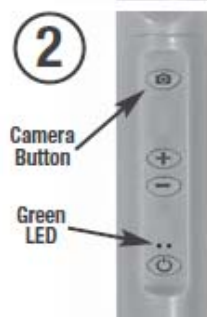
Pairing the Selfie Shoot 'n Share with your Phone

Before you can use the buttons on the Remote Control Section of the Selfie Shoot 'n Share to operate your phone's camera, you must pair it with your phone.

PLEASE NOTE: All mobile devices are different and operating systems vary from phone to phone. Your experience may not be exactly as shown here.



1) Press and hold the On/Off Button for two seconds. The Green LED will glow briefly and then turn off.



2) Wait three to five seconds, the Green LED blinks on and off repeatedly.



3) With your phone turned on, find and tap the "Settings" icon.



4) Make sure that Bluetooth is turned on and then tap Bluetooth.

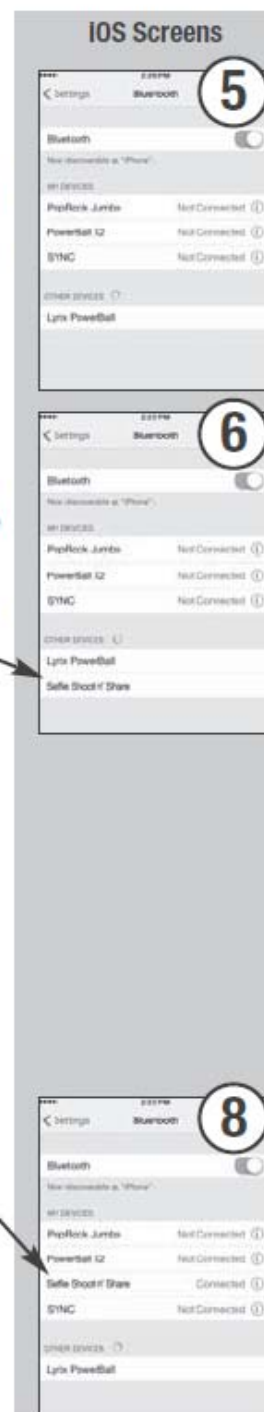


5) The Bluetooth screen will open and your phone will scan for devices. If it does not automatically begin scanning, tap the "Scan" button at the bottom of the screen. The "Scan" button is Android-only.

6) "Selfie Shoot 'n Share" will appear under "Available devices" (Android) or "OTHER DEVICES" (iOS). If your phone does not automatically pair with it, tap "Selfie Shoot 'n Share."

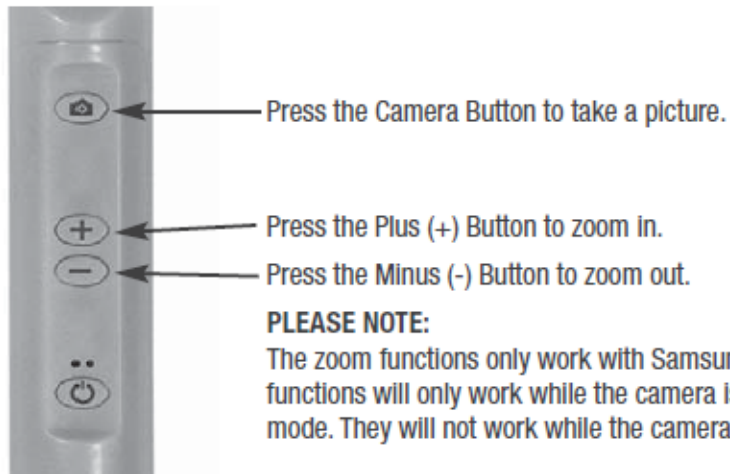
7) On some Android phones, a "Bluetooth pairing request" dialog box may appear. Tap the "Accept" button.

8) "Selfie Shoot 'n Share" will appear under "Paired devices" (Android) or "MY DEVICES" (iOS) and the Green LED will glow steadily. The Selfie Shoot 'n Share is now paired with your phone and ready for use.



Using the Selfie Shoot 'n Share to Control your Phone's Camera

Once you have completed pairing the Selfie Shoot 'n Share with your phone as described previously in this user guide, launch your camera app and follow the directions below.



Using Remote Control Functions with a Tripod (Not Included)

Because the Selfie Shoot 'n Share is connected to your phone via Bluetooth, it does not need to be attached to your phone in order to work. You can use the Mobile Phone Mount with most standard tripods and still take pictures using the Selfie Shoot 'n Share. No tripod is included in this package.



Sleep Mode

When the Selfie Shoot 'n Share has not been used for five minutes, it will go into "Sleep" mode and automatically disconnect with your phone. Press the Camera Button and the Selfie Shoot 'n Share will "wake up" and automatically reconnect with your phone.

If your Phone Disconnects with the Selfie Shoot 'n Share

If your phone disconnects with the Selfie Shoot 'n Share, press the Camera Button on the Selfie Shoot 'n Share and it will automatically reconnect with your phone.

Turning the Selfie Shoot 'n Share Off

To turn the Selfie Shoot 'n Share off, press and hold the On/Off Button for three seconds.

How to Properly Dispose of Batteries

This product contains a lithium-ion battery. To properly dispose of expired batteries, view your city's website or newsletter to find what guidelines, if any, should be followed and to make note of their designated hazardous waste collection days.