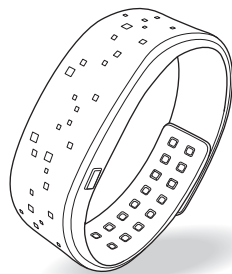
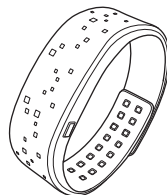


PlayBand User Guide



Package Contents

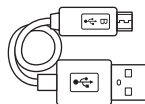
Before using the device, please make sure the following items are included in the package. If any of the item is missing or damaged, please contact the retailer immediately.



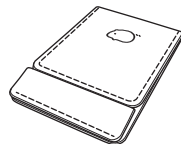
Wristband



Core

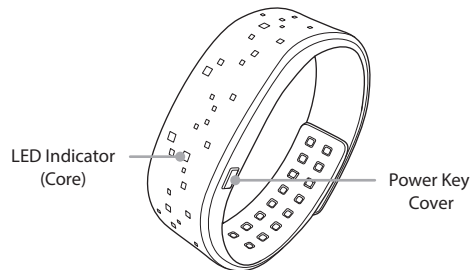


Micro USB Cable



Phone Stand

Product Overview



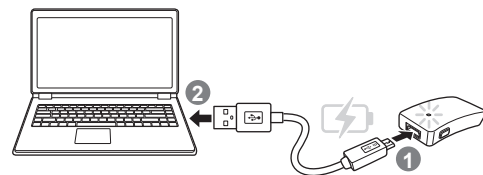
Charging Battery

To charge the battery, do the following:

- 1) Connect one end of the USB cable to the Micro USB port on Core.
- 2) Connect the other end of the USB cable to the USB port on your computer.

NOTE:

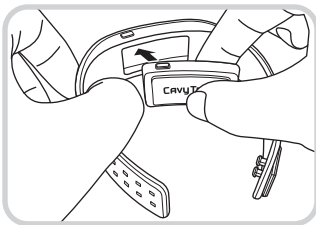
- After the connection is established, the LED indicator on Core lights orange.
- When the battery is fully charged, the LED indicator on Core lights green.
- The battery takes about 1.5 hours to fully charge.
- You can also connect the USB cable to the USB adapter, and connect it to the wall outlet.



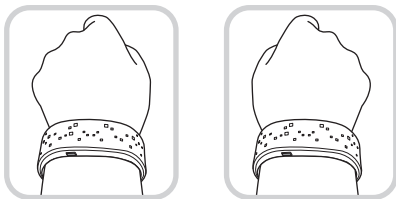
Assembling PlayBand

To assemble PlayBand, do the following:

- 1) Align the Power key on the Core with the Power key cover on the wristband.
- 2) Insert the Core into its slot on wristband.
Ensure it is fully seated inside the wristband.



NOTE: You can wear the PlayBand on the wrist with Power key either on the left side or on the right side, depending on your preference.



Powering On/Off

Powering On

Prerequisite: Ensure the Core is inserted into the wristband.

To power on the PlayBand, press and hold the Power key until the PlayBand vibrates and the LED indicator starts blinking red.



Powering Off

To power off the PlayBand, press and hold the Power key for 7 seconds.

NOTE: When the LED indicator switches off, this indicates the PlayBand is powered off.



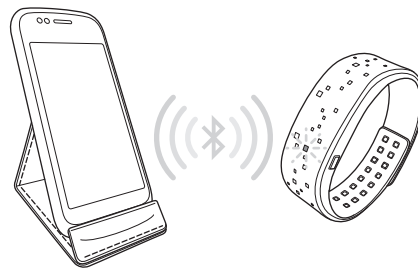
Pairing with Smartphone

To start pairing the PlayBand with your smartphone, do the following:

- 1) Seat your smartphone in the supplied stand. (optional)
- 2) Enable Bluetooth on your smartphone.
- 3) Turn on the PlayBand. Wait until the PlayBand appears in the list of available devices on the screen of your smartphone.
- 4) Pair your smartphone with the PlayBand.

NOTE:

- Bluetooth pairing needs to be done only once.



Specifications

Item	Description
Type:	Wristband
Synchronization:	Bluetooth
Size (mm):	232 x 21 x 7
Weight (g):	26.5
Control Interface:	Key button
Other Interface:	Vibration motor, one LED
Sensor:	9 axis sensor
Bluetooth Interface:	- Bluetooth 2.1 + EDR (Android environment) - Bluetooth 4.0 LE (iOS environment) - 2.402 ~ 2.480 GHz
Charging Mode:	USB
Battery Capacity (mAh):	130
Input Current (mA)	150
Input voltage (V):	DC 5.0
Operating temperature:	-20°C to 60°C
Charging temperature:	+5°C to +40°C

Website QR Code:



Website: www.tunshu.com

Company name: Hangzhou Cavy Technology Co., Ltd.
Address: Room 1308, 1st Floor, No.213 XiwenJie, Xiacheng District, Hangzhou China
Telephone: +86-571-88938270
Customer's service hotline : +86-571-88938271
Email: cavytech@tunshu.com

Federal Communication Commission Interference Statement

This equipment has been tested and found to comply with the limits for a Class B digital device, pursuant to Part 15 of the FCC Rules. These limits are designed to provide reasonable protection against harmful interference in a residential installation.

This equipment generates, uses and can radiate radio frequency energy and, if not installed and used in accordance with the instructions, may cause harmful interference to radio communications. However, there is no guarantee that interference will not occur in a particular installation. If this equipment does cause harmful interference to radio or television reception, which can be determined by turning the equipment off and on, the user is encouraged to try to correct the interference by one of the following measures:

- . Reorient or relocate the receiving antenna.
- . Increase the separation between the equipment and receiver.
- . Connect the equipment into an outlet on a circuit different from that to which the receiver is connected.
- . Consult the dealer or an experienced radio/TV technician for help.

FCC Caution: To assure continued compliance, any changes or modifications not expressly approved by the party responsible for compliance could void the user's authority to operate this equipment. (Example - use only shielded interface cables when connecting to computer or peripheral devices).

FCC Radiation Exposure Statement

This equipment complies with FCC RF radiation exposure limits set forth for an uncontrolled environment. This equipment should be installed and operated with a minimum distance of 0.5 centimeters between the radiator and your body.

This transmitter must not be co-located or operating in conjunction with any other antenna or transmitter.

The antennas used for this transmitter must be installed to provide a separation distance of at least 0.5 cm from all persons and must not be co-located or operating in conjunction with any other antenna or transmitter.

This device complies with Part 15 of the FCC Rules. Operation is subject to the following two conditions:

- (1) This device may not cause harmful interference, and (2) This device must accept any interference received, including interference that may cause undesired operation.