

Portable key cutting machine

Quick installation guide

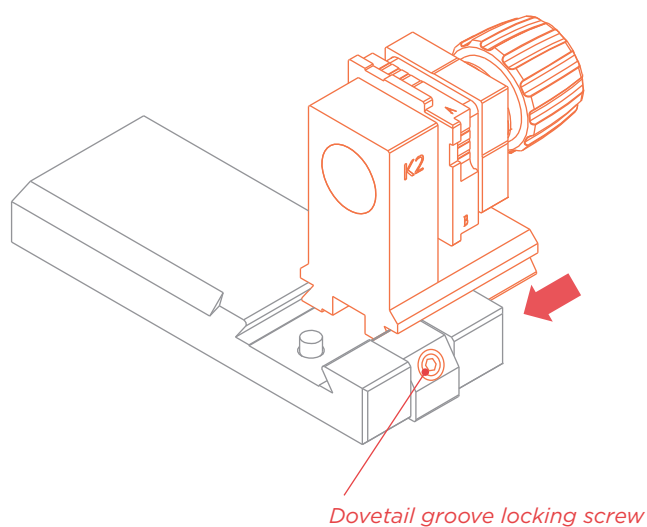


Wuxi Keyoung Electronic Technology Co., Ltd

Equipment Specifications

Adapter voltage	Input:100-240VAC Output:26VDC
Maximum power consumption	150W
Package size	490×320×430 mm
Machine size	251×421×318 mm
LED screen resolution	1024×600
Lithium battery capacity	55.5Wh
Spindle speed	12000rpm
Working temperature	-5~+40℃
Humidity	10-90%
Net weight	17KG
Gross weight	20KG

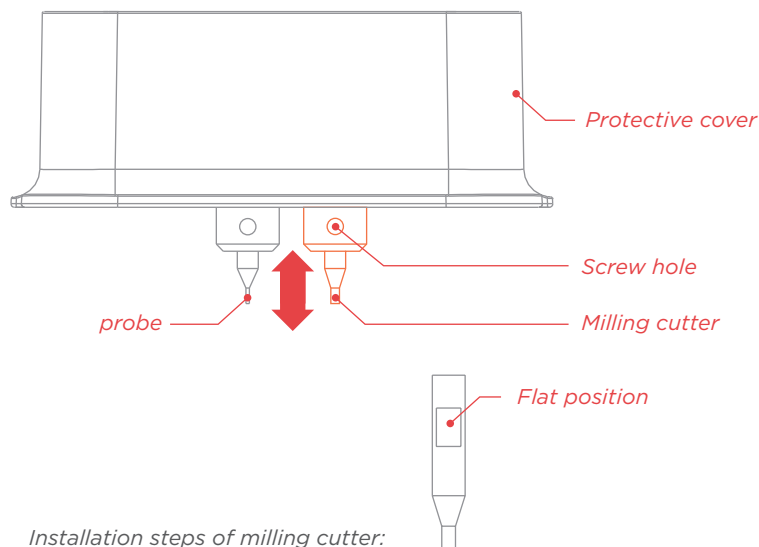
Fixture installation



Fixture installation steps:

1. Loosen the dovetail groove locking screw with the hexagon wrench;
2. The fixture is pushed into the dovetail groove track from the right side to the positioning position;
3. Lock the dovetail groove locking screw.

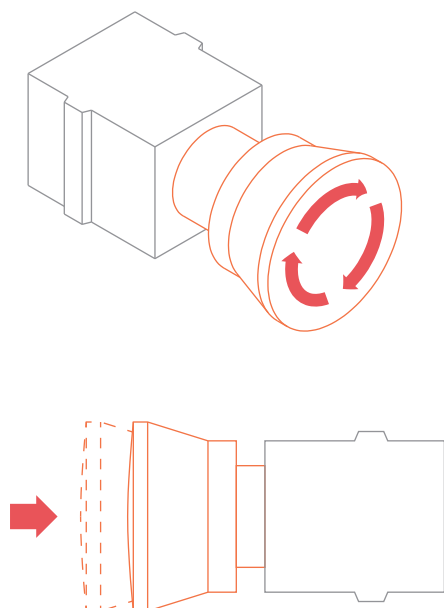
Milling cutter installation



Installation steps of milling cutter:

1. Lift up the protective cover, let the protective cover stay on the top and leak out the screw hole position;
 2. Install the milling cutter into the mounting hole, and align the flat position of the milling cutter with the screw hole position;
 3. Tighten the set screw of milling cutter with hexagon wrench;
 4. If you want to remove the milling cutter, loosen the fastening screw and take out the milling cutter downward;
- The installation and disassembly steps of the probe are the same as those of the milling cutter.

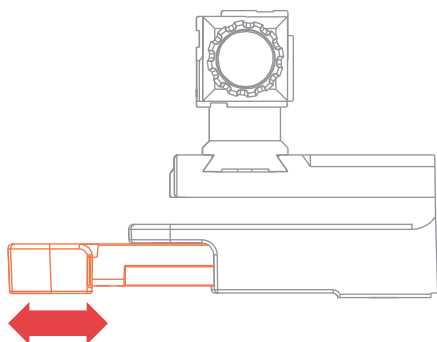
Emergency stop button



Instructions for use of emergency stop button:

1. When an emergency occurs or the key processing is finished, the power supply can be cut off by directly pressing the knob vertically;
2. According to the direction of the arrow, turn the knob clockwise about 45 degrees to turn on the power supply of the device.

Cutting collecting box



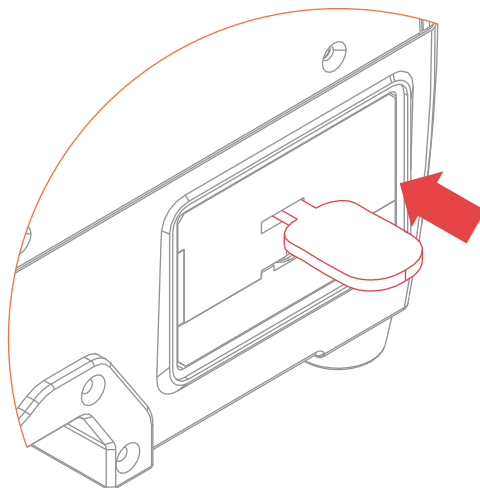
Instructions for use of cutting collection box:

1. When the cutting waste needs to be treated, it can be directly pulled out of the lower cutting collection box and the waste can be poured out;
2. When storing, directly aim at the mouth and push forward.

matters needing attention

- Please read the product operation manual carefully before use;
- Wear safety goggles in accordance with ANSI standard when working;
- Do not put your hand into the working area when the machine is running;
- Keep children away from the machine;
- When not in use for a long time, please cut off the power supply;
- Ensure that there is no chip residue during packaging and transportation;
- Do not use air jet gun and other tools to clean the chips;

Intelligent tooth shape recognition



Instructions for intelligent tooth shape recognition:

1. Insert the key into the fixing hole;
2. On the screen, check whether the key embryo is deviated greatly; if it is skewed, the key position can be adjusted left and right;
3. After reading the key sequence, pull out the key directly.

- Please keep the worktable clean;
- This machine has built-in lithium battery pack. Please do not disassemble it without permission. Keep the machine away from high temperature and fire source
- The machine should be placed in the area of light proof, rain proof and waterproof.

Manufacturer: Wuxi Keyoung Electronic Technology Co., Ltd

QQ: 3004280989

WEB: www.kydz-wx.com

Address: 5-302, 5-301 Huaqing Creative Park, Huishan Economic Development Zone, Wuxi, Jiangsu

This equipment has been tested and found to comply with the limits for a Class B digital device, pursuant to Part 15 of the FCC Rules. These limits are designed to provide reasonable protection against harmful interference in a residential installation. This equipment generates uses and can radiate radio frequency energy and, if not installed and used in accordance with the instructions, may cause harmful interference to radio communications. However, there is no guarantee that interference will not occur in a particular installation. If this equipment does cause harmful interference to radio or television reception, which can be determined by turning the equipment off and on, the user is encouraged to try to correct the interference by one or more of the following measures:

- Reorient or relocate the receiving antenna.
- Increase the separation between the equipment and receiver.
- Connect the equipment into an outlet on a circuit different from that to which the receiver is connected.
- Consult the dealer or an experienced radio/TV technician for help.

Changes or modifications not expressly approved by the party responsible for compliance could void the user's authority to operate the equipment.

- The distance between user and products should be no less than 20cm.

Inventory

The following items are included in the package. If it is lost, please contact your dealer.

Name	Number	Explain
2.5mm Cutter	2	Cutting tools ($\phi 2.5 \times \phi 6 \times 37L$) ($\phi 2.5 \times \phi 6 \times 45L$)
1.5mm Cutter	1	Cutting tools ($\phi 1.5 \times \phi 6 \times 37L$)
2.0mm Cutter	1	Cutting tools ($\phi 2.0 \times \phi 6 \times 37L$)
Probe	2	Cutting tools ($\phi 1.0 \times \phi 6 \times 40L$)
2.5mm hexagon wrench	2	Replace probe / milling cutter / locking fixture
The power adapter	1	Connecting tools
lithium battery	1	Built-in battery
Brush	1	Machine cleaning tools
Clamp K1	1	External milling key fixture / leveling fixture
Clamp K2	1	Key fixture for vertical milling
Clamp K3 (Optional accessories)	1	FO21/SX9Clamp
Check block	1	Calibration accuracy
Host	1	Key machine body
Product inspection / list	1	Factory inspection certificate / packing statistics
Quick installation guide	1	Key machine assembly, etc

Product certificate

This certificate indicates that the product has passed strict inspection and reached the company's quality standard, and is qualified and approved for delivery.

Product name: Portable key cutting machine

Product model: KYDZ-306

Inspection date: _____

Wuxi Keyoung Electronic Technology Co., Ltd

Warranty card

Customer name : _____

Phone number : _____

Contact address : _____

Product model : _____

Product number : _____

Purchase date : _____

This product provides customers with one year's warranty service from the date of purchase. When warranty is needed, please show valid Three Guarantees certificate and valid invoice.