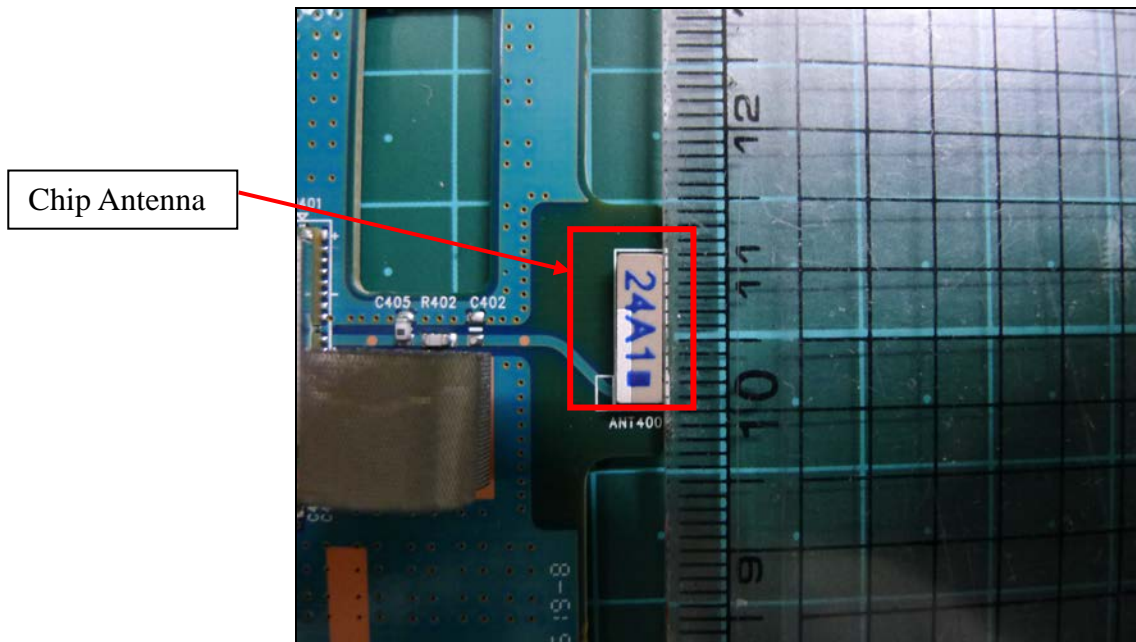
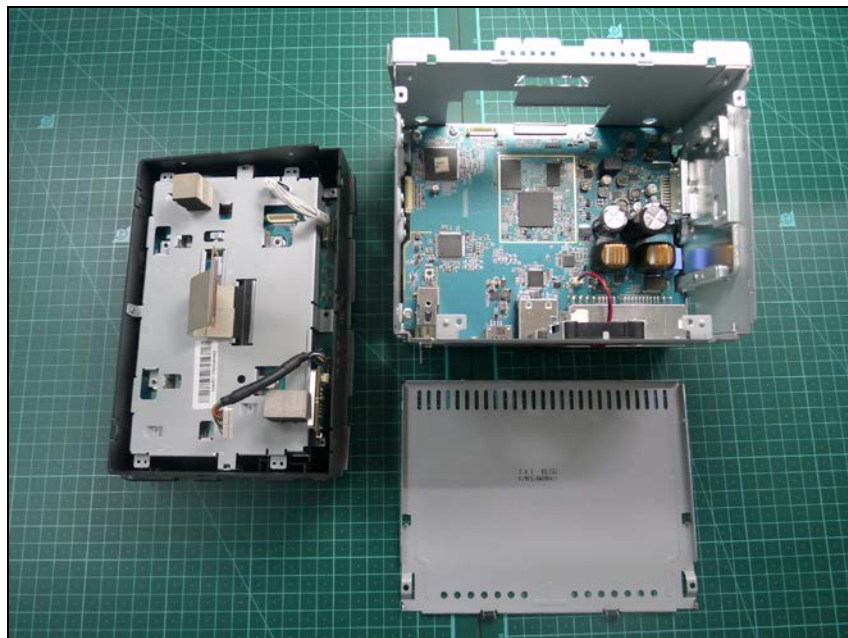


# ***Internal photos of EUT***

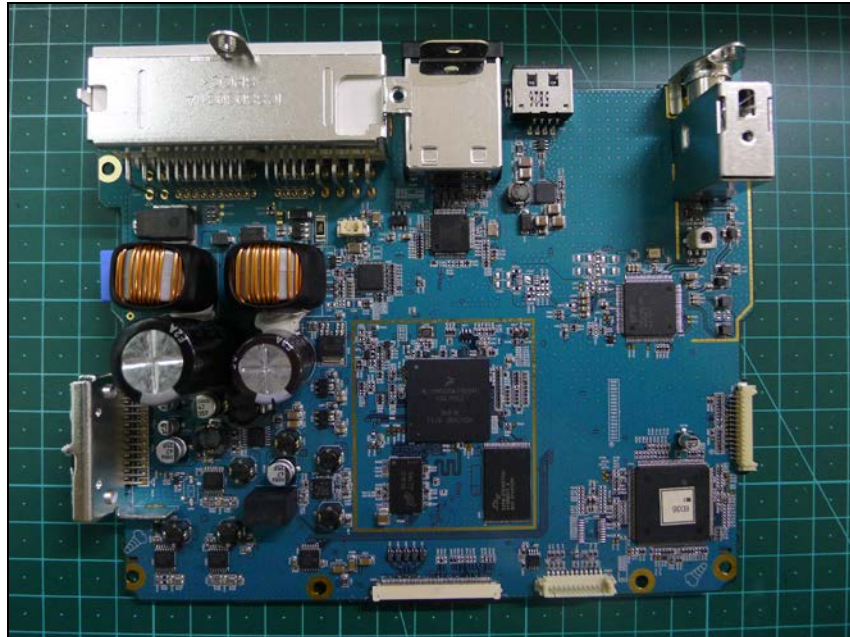
### *Antenna view of EUT*



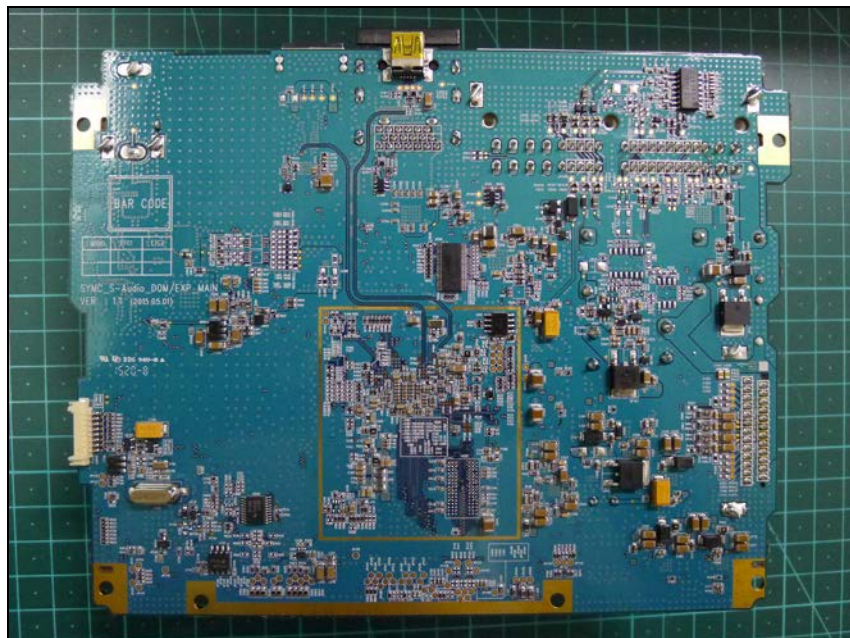
### *Internal view of EUT*



*Top view of Main PCB*

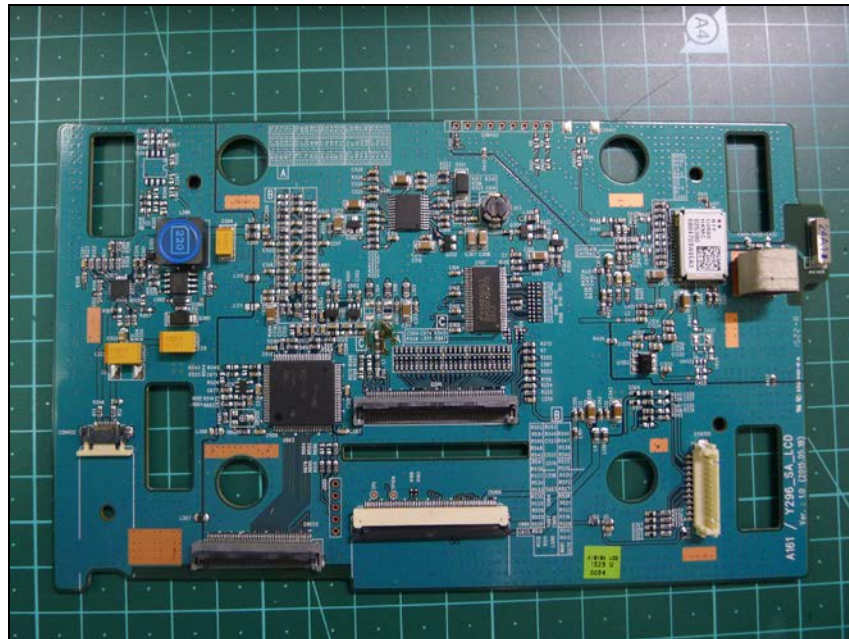


*Bottom view of Main PCB*

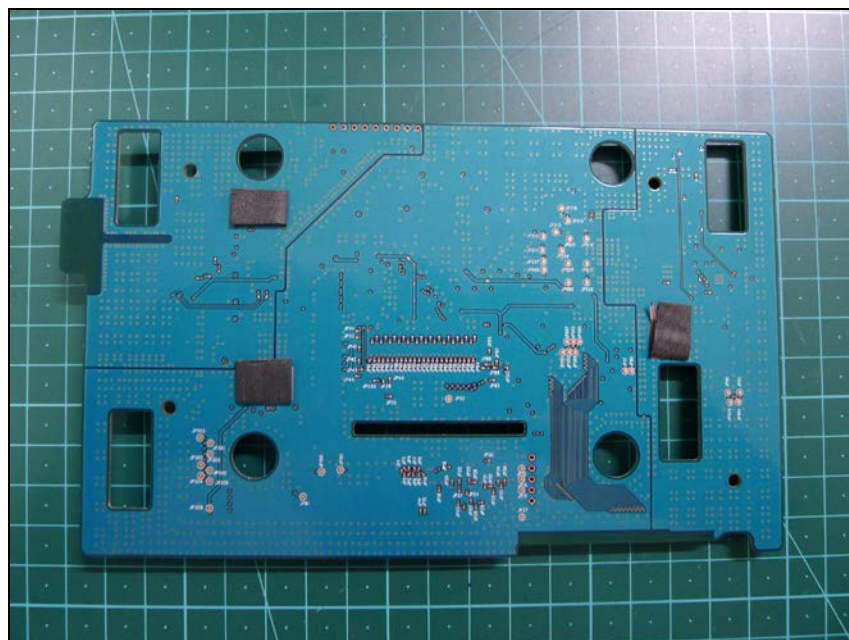




*Top view of LCD PCB*



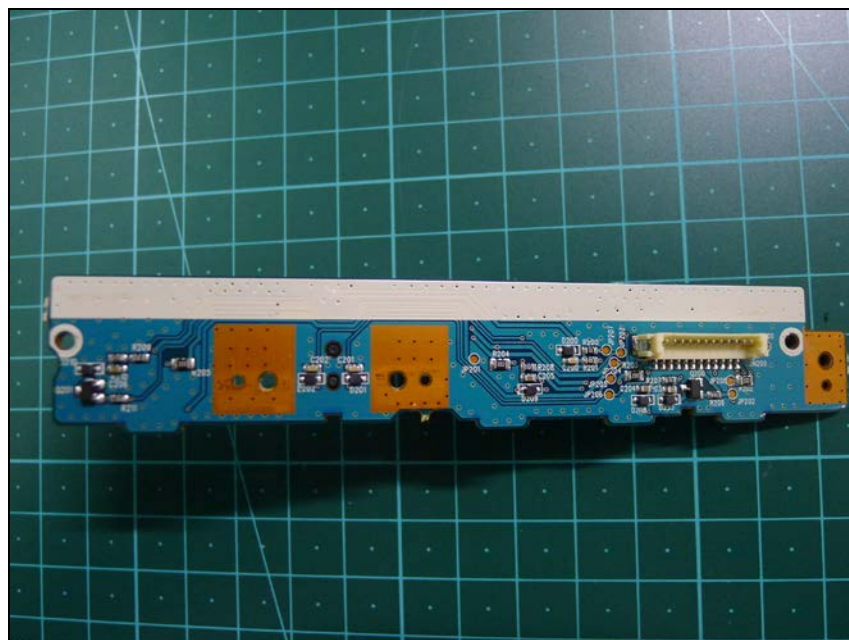
*Bottom view of LCD PCB*



*Top view of Button PCB*



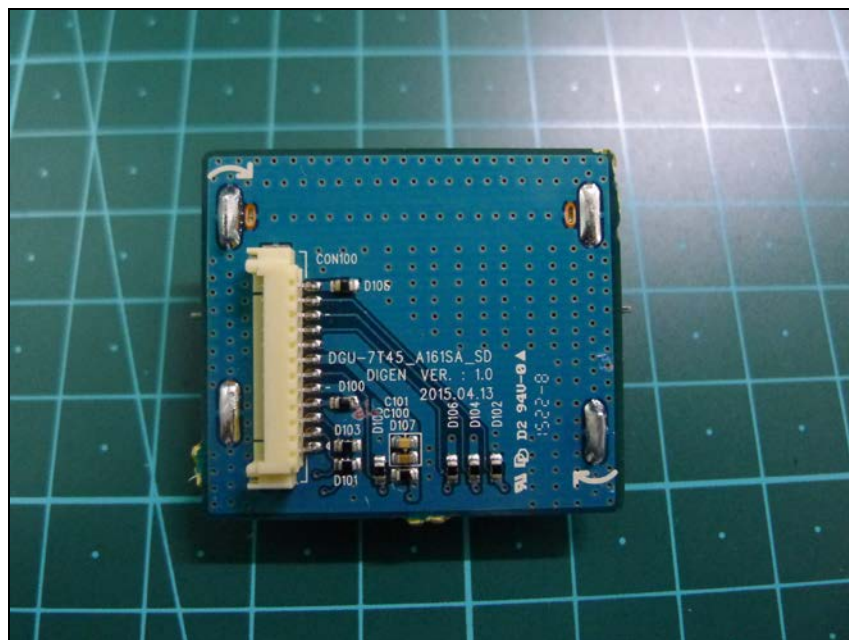
*Bottom view of Button PCB*



***Top view of SD Slot PCB***

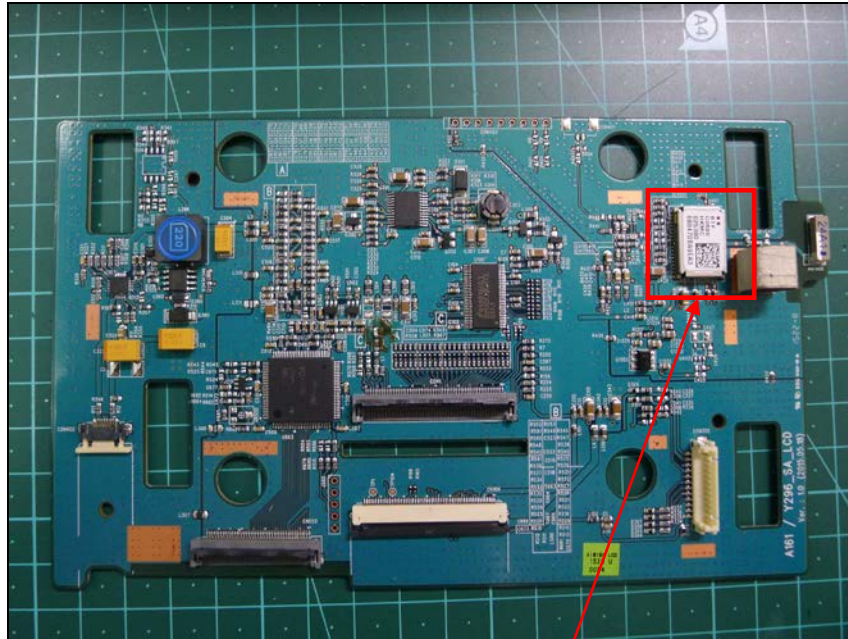


***Bottom view of SD Slot PCB***





*Top view of Bluetooth Module*



### ***Remove shield can(Bluetooth Module)***

