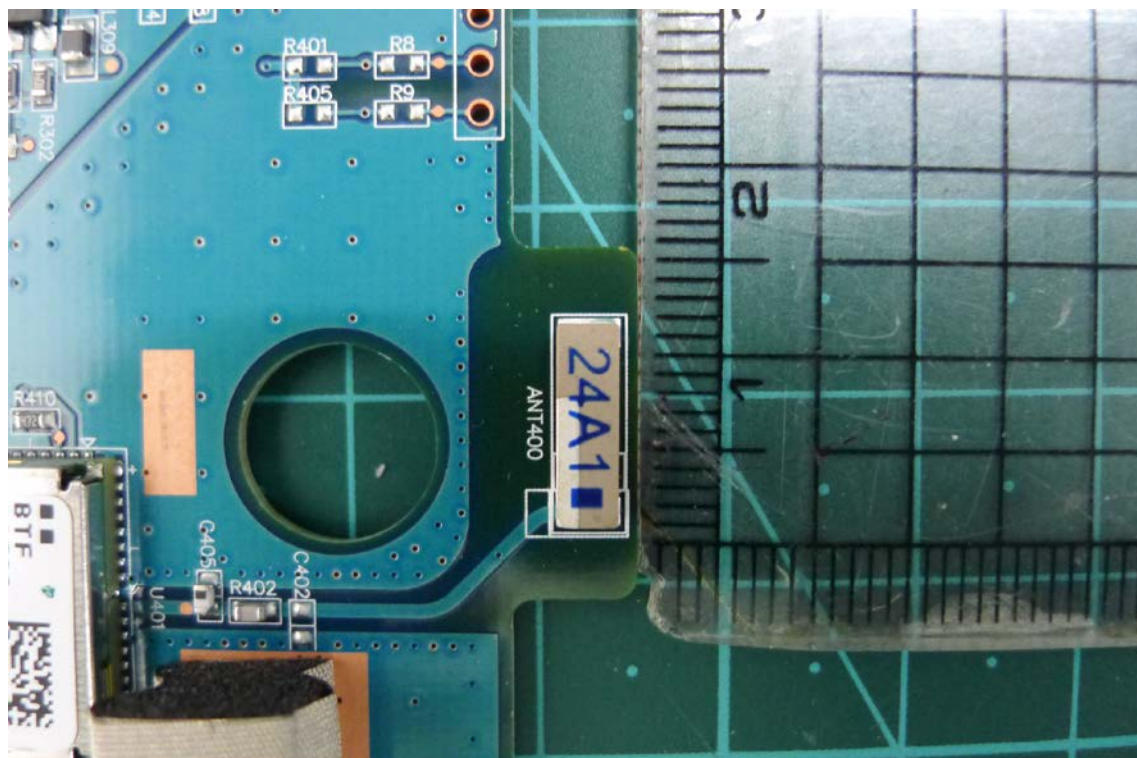
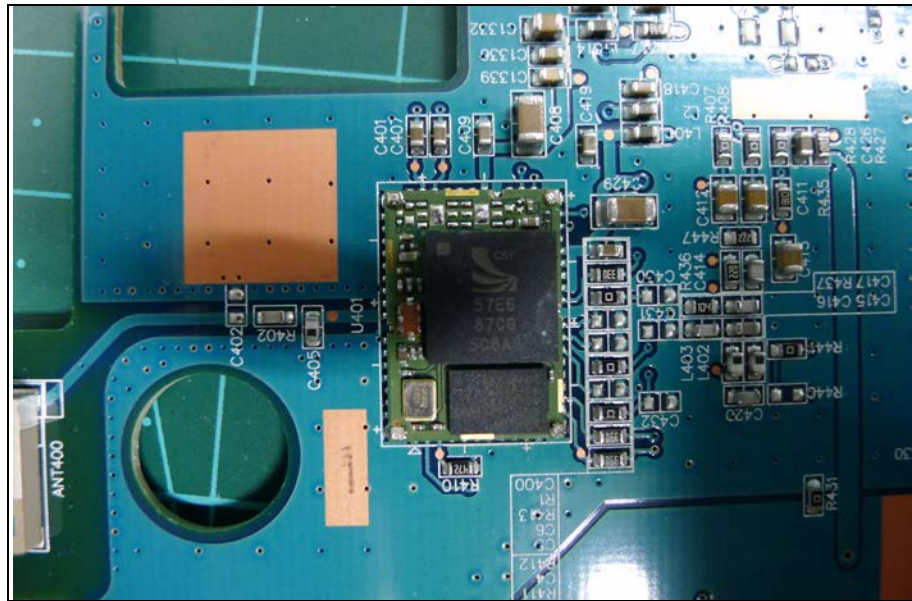


Internal photos of EUT

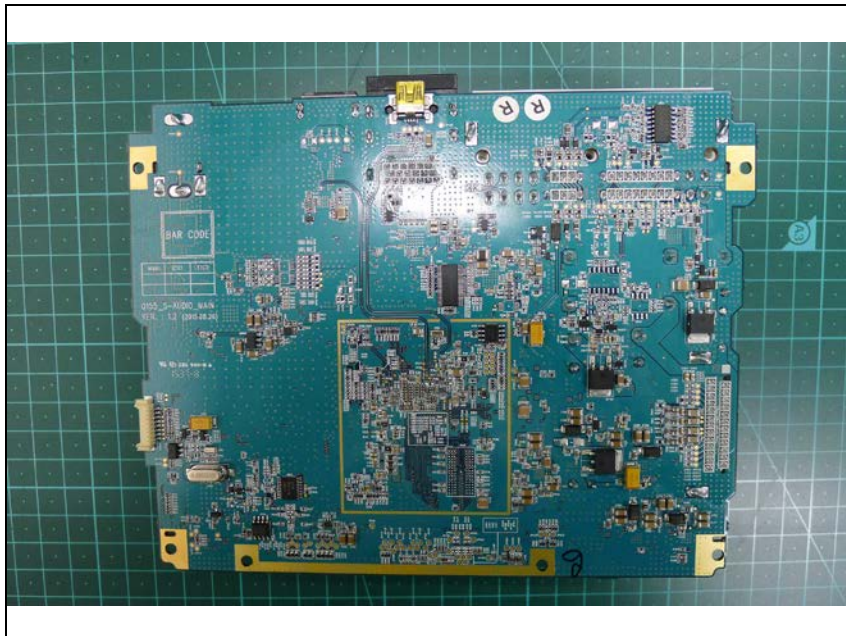
Bluetooth module / Antenna



Top view of Main PCB



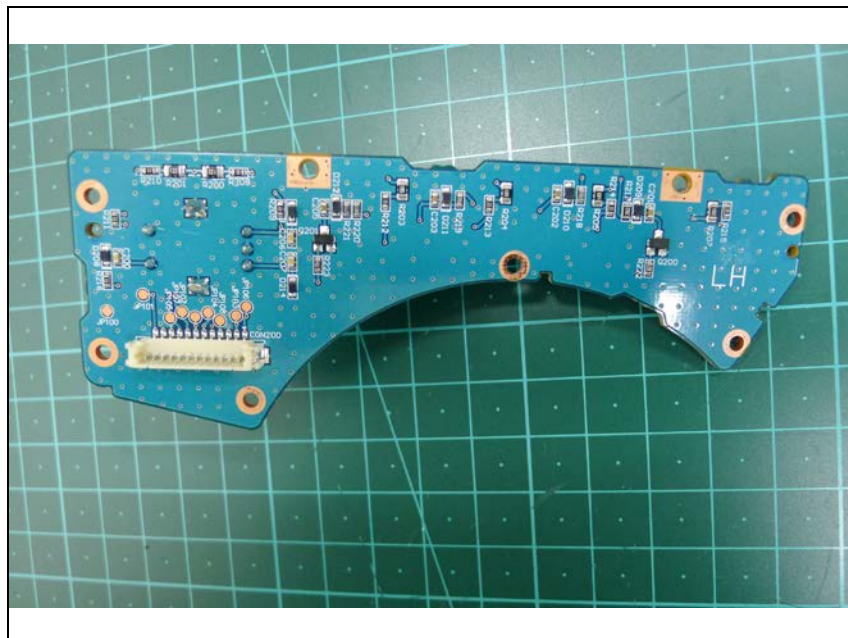
Bottom view of Main PCB



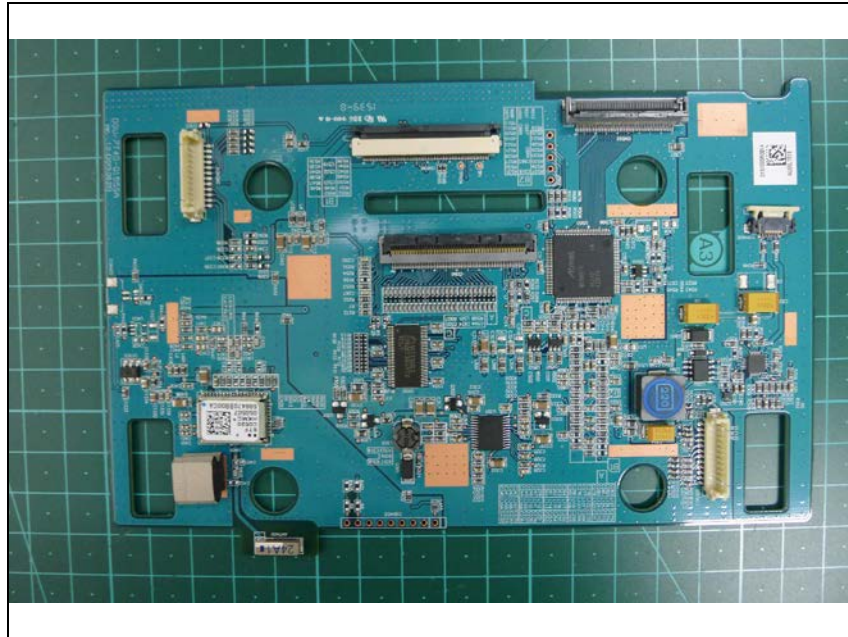
Top view of Front A PCB



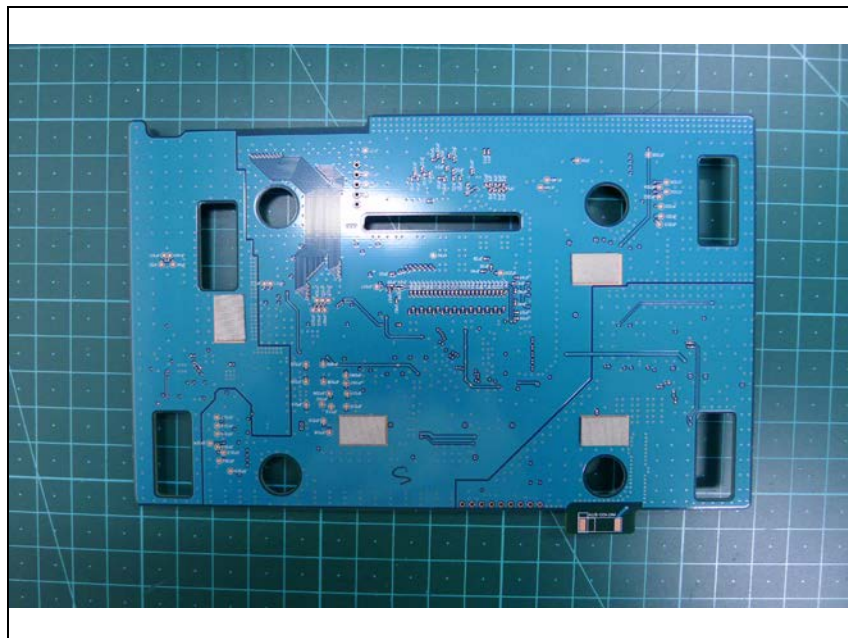
Bottom view of Front A PCB



Top view of LCD PCB



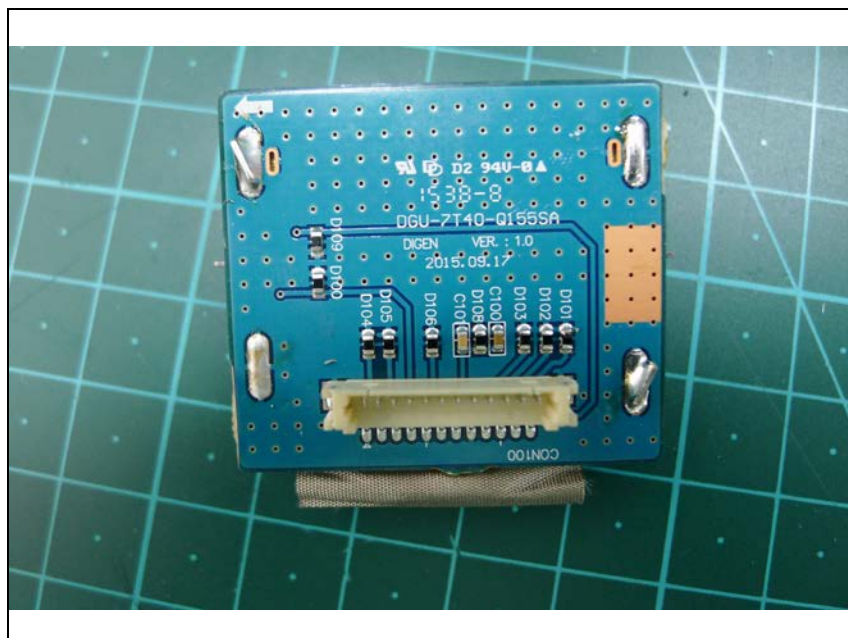
Bottom view of LCD PCB



Top view of SD Card Reader PCB



Bottom view of SD Card Reader PCB



Top view of LCD



Bottom view of LCD

