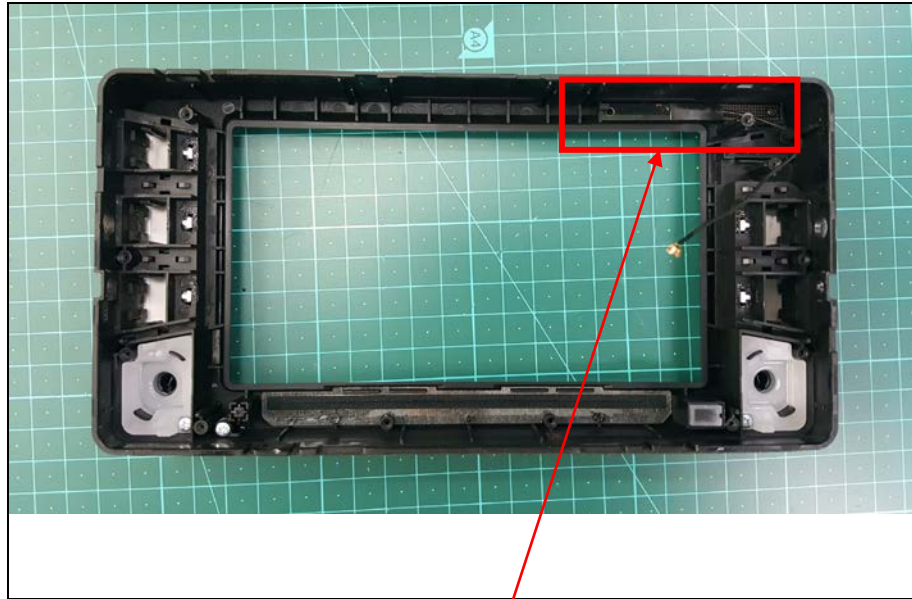


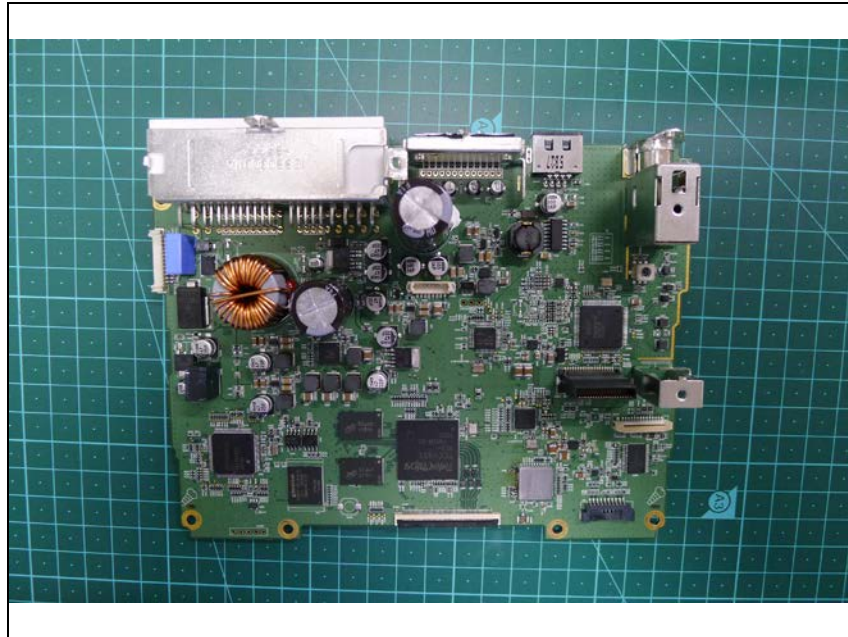
Internal photos of EUT

(DGU-6E14-N3)

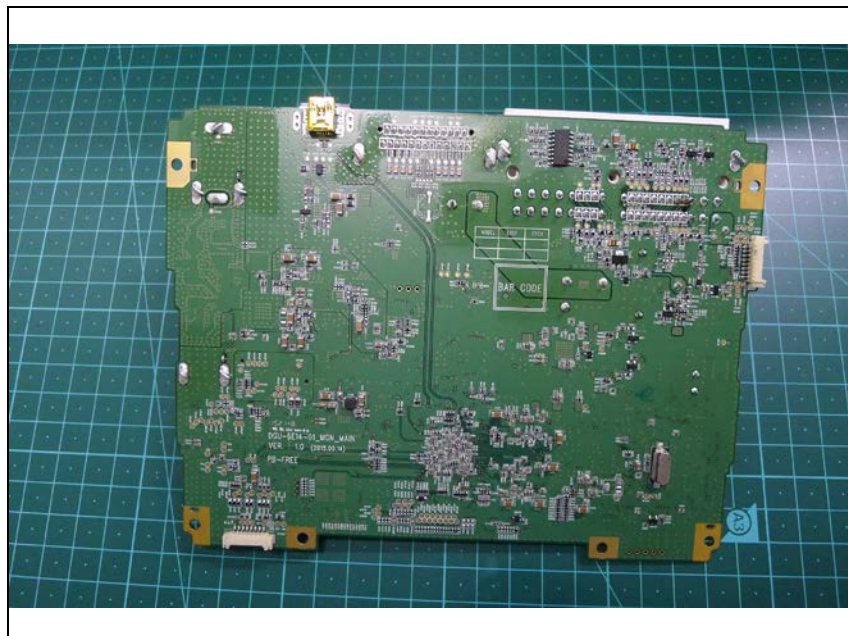
Bluetooth antenna



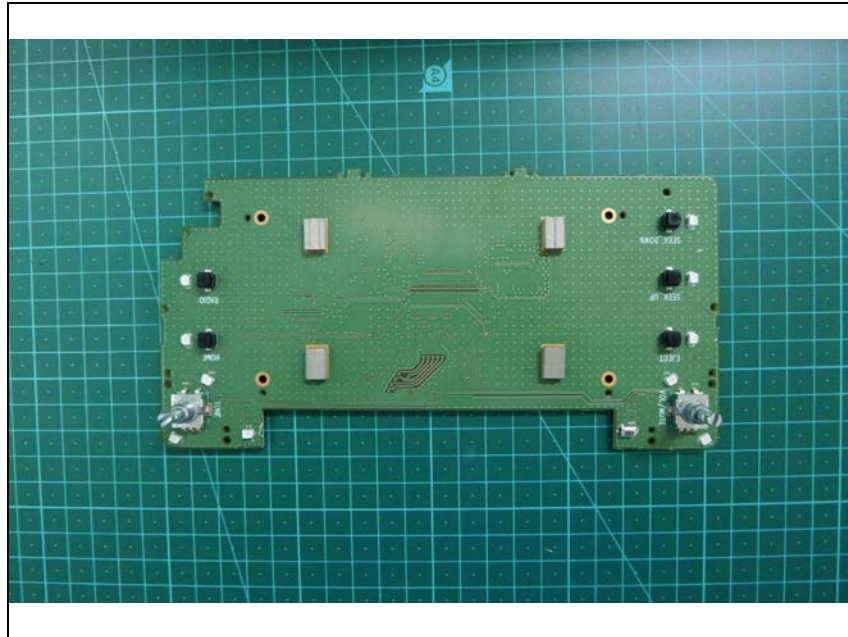
Top view of Main PCB



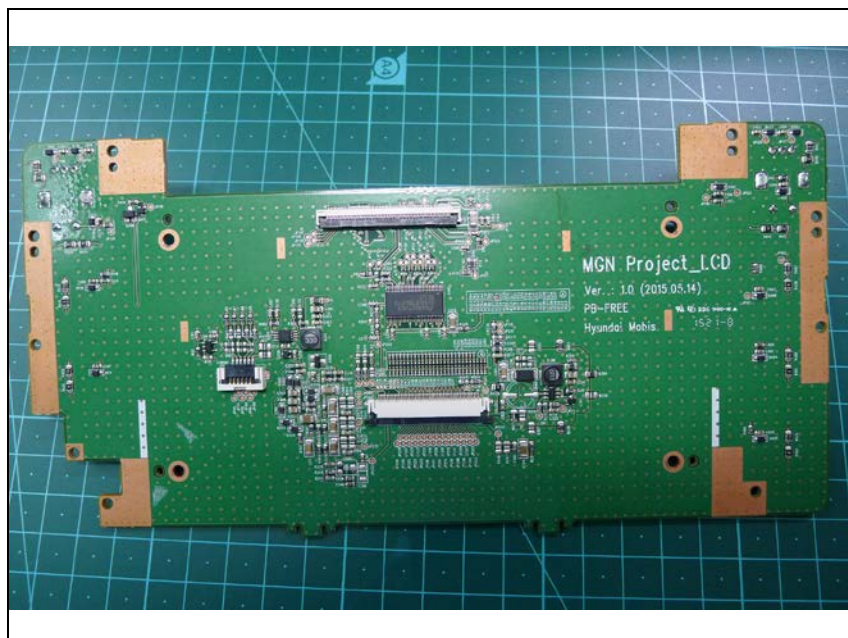
Bottom view of Main PCB



Top view of Front PCB



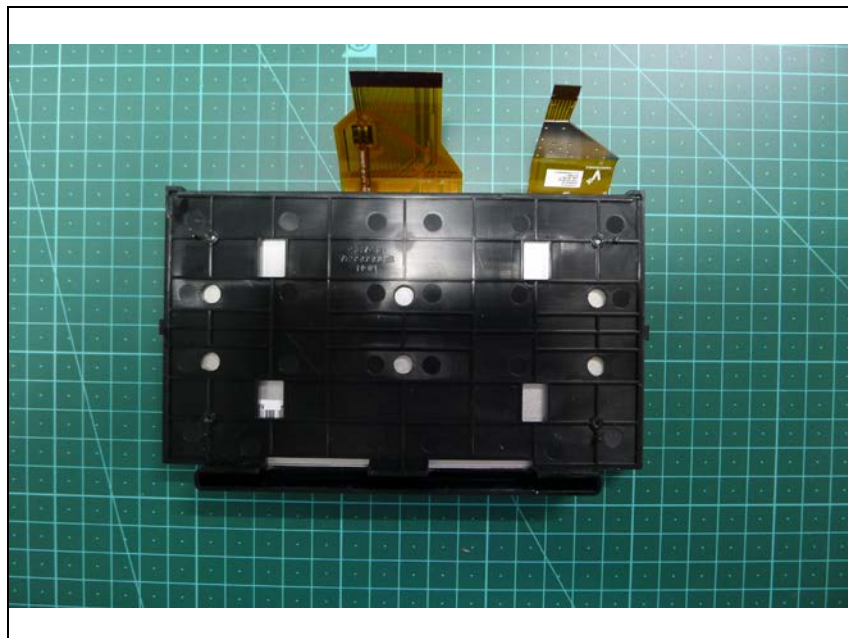
Bottom view of Front PCB



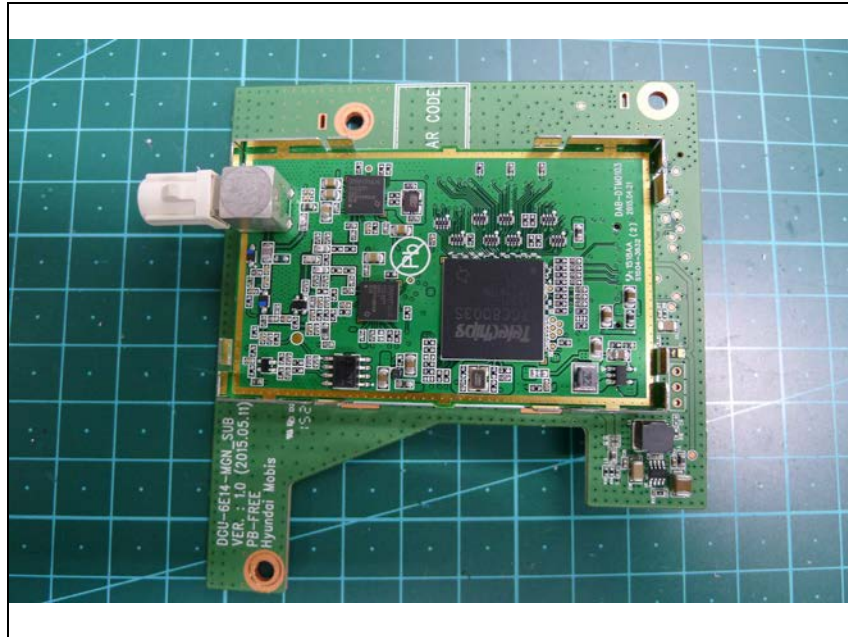
Top view of LCD



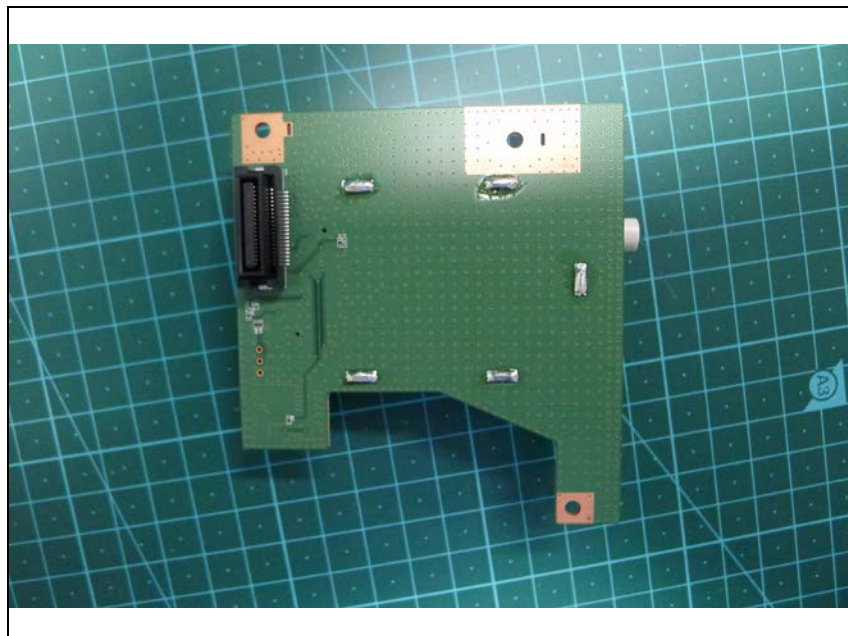
Bottom view of LCD



Top view of Bluetooth PCB



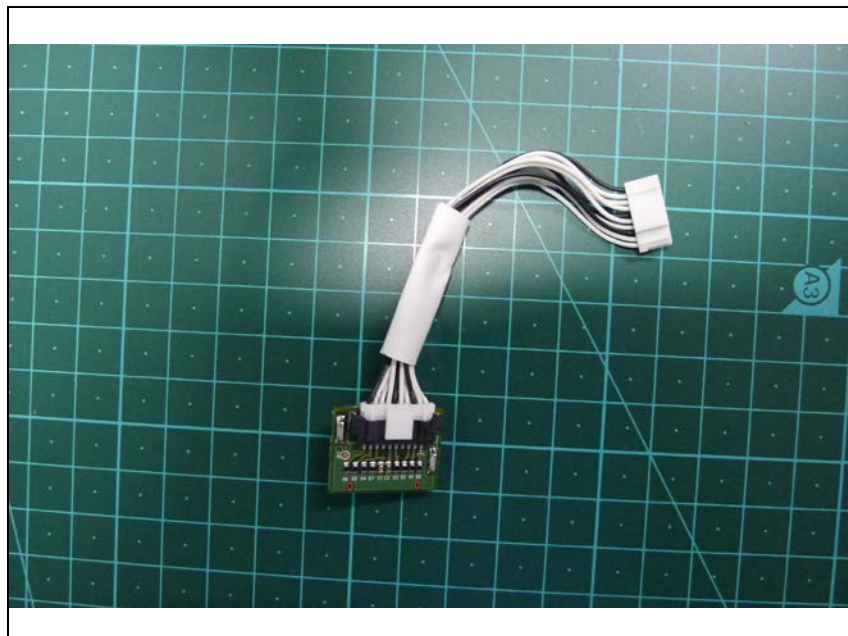
Bottom view of Bluetooth PCB



Top view of TF Card PCB



Bottom view of TF Card PCB



Top view of Cd-rom



Bottom view of Cd-rom

