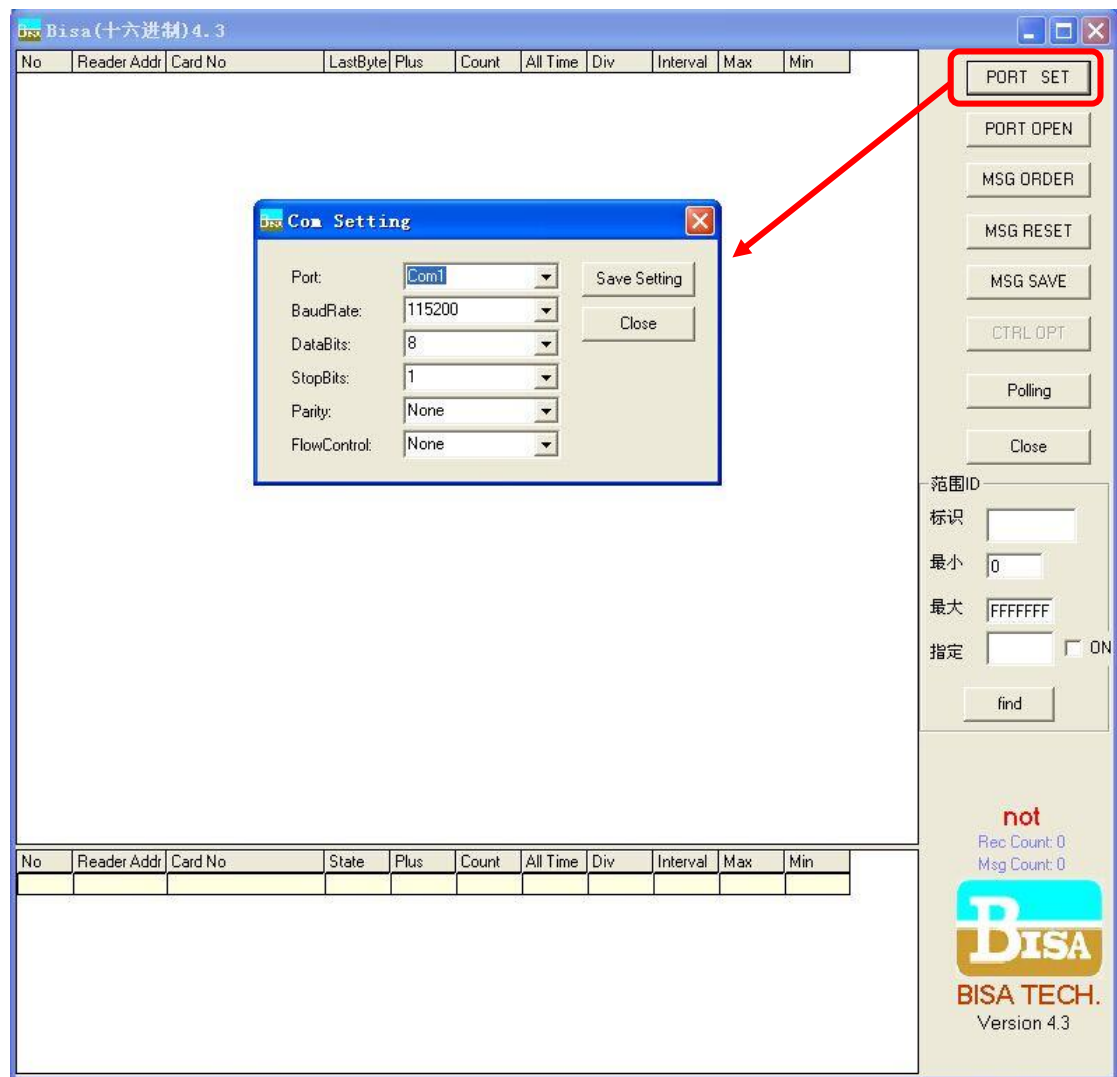


POE Multi-Reader User Manual

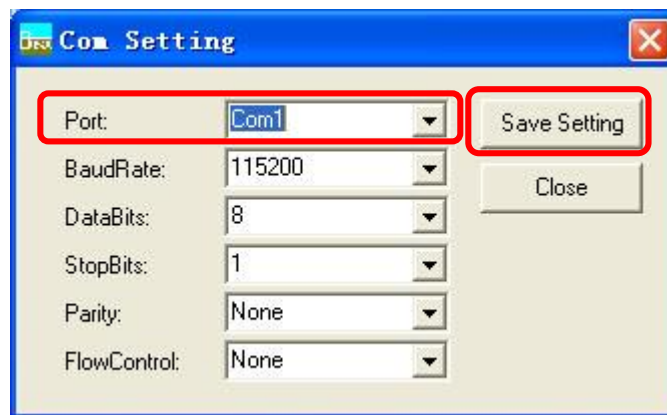
Equipment:

Serial port cable, PC & POE Multi-Reader

1. Connect Reader with the PC via serial port cable.
2. Click "PORT SET"
3. Com Setting will show up



4. Select corresponding port with the PC then click "Save Setting"



5. Click "PORT OPEN"

No	Reader Addr	Card No	LastByte	Plus	Count	All Time	Div	Interval	Max	Min
1	0001	5569000000000010	95	10	2	1.2030	0.6020	1.0470	1.0470	0.1560
2	0001	1C00002418000024	5E	-63	2	1.2960	0.6480	1.1400	1.1400	0.1560
3	0001	1B00001300000000	C1	-34	3	2.1560	0.7190	0.9530	1.0470	0.1560
4	0001	BB7055FF00E6DF80	C0	-33	1	0.1560	0.1560	0.1560	0.1560	0.1560
5	0001	BB80000B7FBEFFC0	8C	19	1	0.3430	0.3430	0.3430	0.3430	0.3430
6	0001	1B00002200000000	8D	18	2	1.5000	0.7500	1.0630	1.0630	0.4370
7	0001	F800000000090150	80	31	1	0.4370	0.4370	0.4370	0.4370	0.4370
8	0001	BB70007C010DE8C3	8C	19	1	0.4370	0.4370	0.4370	0.4370	0.4370
9	0001	5569000000000534	95	10	1	0.8280	0.8280	0.8280	0.8280	0.8280
10	0001	4600000000000001	86	25	1	0.8280	0.8280	0.8280	0.8280	0.8280
11	0001	5569000000002309	95	10	2	1.9680	0.9840	1.1400	1.1400	0.8280
12	0001	9595959595959595	95	10	1	1.1090	1.1090	1.1090	1.1090	1.1090
13	0001	4300000000011051	81	30	1	1.3900	1.3900	1.3900	1.3900	1.3900
14	0001	D1000033FFFFFFFF	A0	-1	1	1.5000	1.5000	1.5000	1.5000	1.5000
15	0001	F800000000090153	80	31	1	1.5930	1.5930	1.5930	1.5930	1.5930
16	0001	D1000034FFFFFFFF	A0	-1	1	1.5930	1.5930	1.5930	1.5930	1.5930
17	0001	5300000000011956	80	31	1	1.5930	1.5930	1.5930	1.5930	1.5930
18	0001	5300000000011957	80	31	1	1.6870	1.6870	1.6870	1.6870	1.6870
19	0001	4600000000004716	86	25	1	2.1560	2.1560	2.1560	2.1560	2.1560
20	0001	BB7055FF00E5DF80	C0	-33	1	2.1560	2.1560	2.1560	2.1560	2.1560

No	Reader Addr	Card No	State	Plus	Count	All Time	Div	Interval	Max	Min
2	0001	1C00002418000024	NO	-63	2	1.2960	0.6480	1.1400	1.1400	0.1560

6. Data from tags will be received by reader now and the details information will be shown on the left hand side.

FCC Notices

This device complies with Part 15 of the FCC Rules.

- (1) This device may not cause harmful interference, and
- (2) this device must accept any interference received, including interference that may cause undesired operation.

NOTE: This equipment has been tested and found to comply with the limits for a Class B digital device, pursuant to part 15 of the FCC Rules. These limits are designed to provide reasonable protection against harmful interference in a residential installation. This equipment generates uses and can radiate radio frequency energy and, if not installed and used in accordance with the instructions, may cause harmful interference to radio communications. However, there is no guarantee that interference will not occur in a particular installation. If this equipment does cause harmful interference to radio or television reception, which can be determined by turning the equipment off and on, the user is encouraged to try to correct the interference by one or more of the following measures:

- Reorienting or relocating the receiving antenna
- Increasing the distance between the equipment and receiver
- Connecting the equipment to an outlet on a circuit which is different from the one the receiver is connected to
- Consult a qualified expert for help