

THE BLACK SERIES™

Bluetooth® headphones



INTRODUCTION

Congratulations on your purchase of the Bluetooth® headphones. Please read all instructions and warnings in this sheet prior to using your speaker. Keep this instruction sheet as it contains important information for future reference.

SAFETY WARNINGS

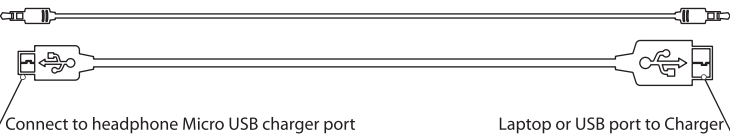
- Inspect the product before every use. If the product appears worn, frayed, cracked, or broken in any manner, discontinue use and discard immediately.
- Do not disassemble.
- Do not use for anything other than its intended purpose.
- This is not a children's product. Keep out of reach of children.
- Product is not designed for all weather use. Keep away from moisture and extreme temperatures.
- There are no serviceable parts, do not disassemble or attempt to repair.

FEATURES

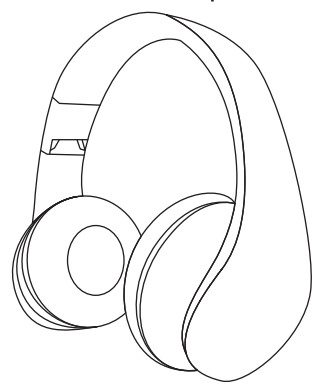
- Compatible with Bluetooth® devices
- Stereo Sound
- Auxiliary connection
- Built in rechargeable battery
- Built in microphone

ACCESSORIES

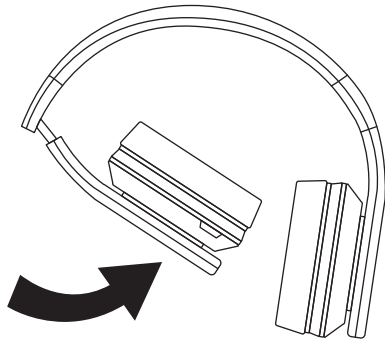
1. 3.5mm audio cable
2. Micro USB Charger Cable



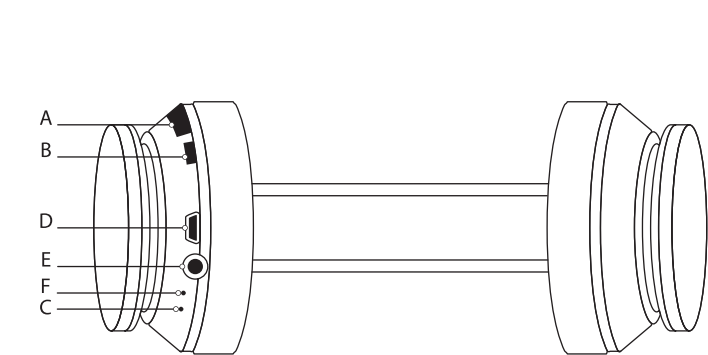
Bluetooth® Headphones



HEADBAND ADJUSTMENTS



USB Charging Cable



CHARGING THE HEADPHONES

1. Attach the small part of the USB Charging Cable to (D).
2. Attach the other portion of the cable to a computer's USB port.
3. A red LED light (C) will turn on, indicating speakers are charging.
4. Remove the USB cable from computer when the red LED light turns blue

Note: It takes approximately 4 hours to fully charge headphones.

CONTROLS

- A. **When paired** - Slide towards “-” to decrease volume / Slide towards (+) to increase volume. **While playing music** - Slide and hold towards “-” to skip to the previous song / Slide and hold towards (+) to skip to the next track
- B. **On/off** - turn headphones on by pressing and holding button for about 2 seconds until a voice prompt confirms function. Turn headphones off by pressing and holding button for about 3 seconds until a voice prompt confirms function. **While playing music** - Press once to pause audio and press again to continue playing audio. **Call features** - Press once to answer an incoming call and press again to end the call / Press twice to redial your most recent call. Press and hold until you hear a beep to reject call. Call can be put on hold by double pressing the power button. Double press again to resume the call.
- C. **When paired** - light will blink blue / light will blink red when battery is low .While charging - Solid red indicates charging / solid blue indicates fully charged.
- D. Charging jack
- E. **When paired and auxiliary cable is plugged in** - use Auxiliary connection for audio only / use your phone's calling features to place and answer calls.
- Powered off and auxiliary cable is plugged in** - Bluetooth® headphones can be used as conventional headphones.

BC

CHOKING HAZARD – SMALL PARTS NOT FOR CHILDREN UNDER 3 YEARS. CAUTION THIS PACKAGE CONTAINS SMALL PARTS.

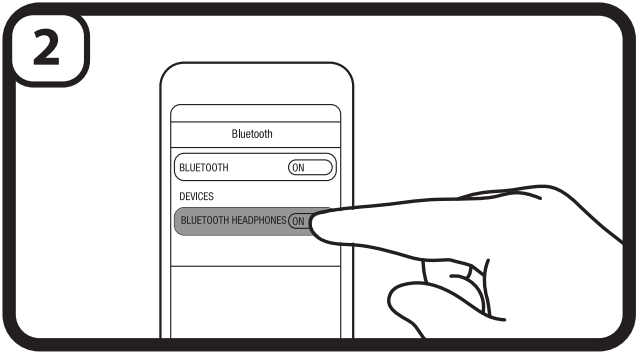
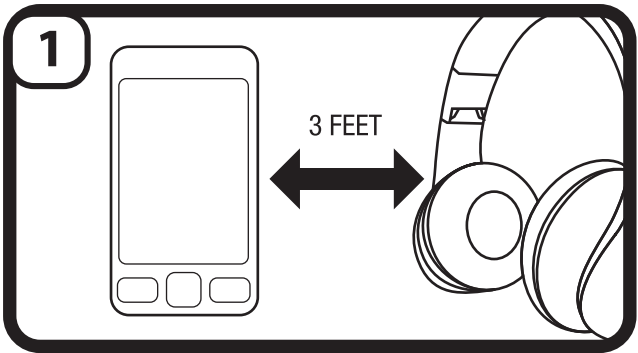
PAIRING THE HEADPHONES

Your device must have Bluetooth® capability. Consult your device manufacturer or user manual if you are unsure if your device has this feature.

Turn off any devices that may have been previously paired to the headphones.

1. Press and hold the power button down (B) for about 4 seconds, a voice will first confirm the headphones are powered on, and a second voice will confirm that you have entered into pairing mode.
2. Place your device within 3 feet of headphones, figure 1.
3. Enable Bluetooth® on your device and search for new Bluetooth® devices. Refer to your device's manual on how to enable and operate Bluetooth®.
4. Select BLUETOOTH HEADPHONES from the list of Bluetooth® available devices, Figure 2.
5. A voice will notify you when the headphones are successfully paired
6. You can now stream music wirelessly from your device to your headphones.

Note: When you restart your headphones they will automatically pair with your device. A voice will notify you when the headphones are successfully paired. When device is paired, release the power button immediately after voice prompt of “power on”. Otherwise device will reset and need to repeat step 4 for pairing. If not paired successfully, please turn the headphones off and repeat step 1-5.



Note: If the headphones are out of range, a beep will sound. When back in range, a voice will prompt "Paired" .

This device complies with Part 15 of the FCC Rules. Operation is subject to the following two conditions: (1) This device may not cause harmful interference, and (2) this device must accept any interference received, including interference that may cause undesired operation.

Warning: Changes or modifications to this unit not expressly approved by the party responsible for compliance could void the user's authority to operate the equipment.

NOTE: This equipment has been tested and found to comply with the limits for a Class B digital device, pursuant to Part 15 of the FCC Rules. These limits are designed to provide reasonable protection against harmful interference in a residential installation. This equipment generates, uses and can radiate radio frequency energy and, if not installed and used in accordance with the instructions, may cause harmful interference to radio communications. However, there is no guarantee that interference will not occur in a particular installation. If this equipment does cause harmful interference to radio or television reception, which can be determined by turning the equipment off and on, the user is encouraged to try to correct the interference by one or more of the following measures:

- Reorient or relocate the receiving antenna.
- Increase the separation between the equipment and receiver.
- Connect the equipment into an outlet on a circuit different from that to which the receiver is connected.
- Consult the dealer or an experienced radio/TV technician for help.

The Bluetooth® word mark and logos are registered trademarks owned by Bluetooth SIG, Inc. Computers, tablets, Smart Phones, and music players must have built-in BLUETOOTH® wireless technology to connect. This product is not affiliated with or endorsed by any of the above mentioned, referenced or pictured trademarks, companies or devices.

©2015 MerchSource, LLC. The Black Series and all associated logos are trademarks of MerchSource, LLC. All rights reserved.
Distributed by MerchSource, LLC., Irvine, CA 92618.

For technical support, please visit www.msccustomercaare.com or call 1-800-374-2745

The artwork and design of this instruction manual are protected by US copyright law and may not be reproduced, distributed, displayed, published or used for any purpose without prior written permission. It is not permitted to alter, remove or reproduce any trademarks or copyright notice from this manual.

RECYCLE WARNING
PLEASE RECYCLE OR DISPOSE OF ELECTRONICS PROPERLY
RECYCLING INFORMATION IS AVAILABLE AT WWW.MSCCUSTOMERCARE.COM

Printed in China