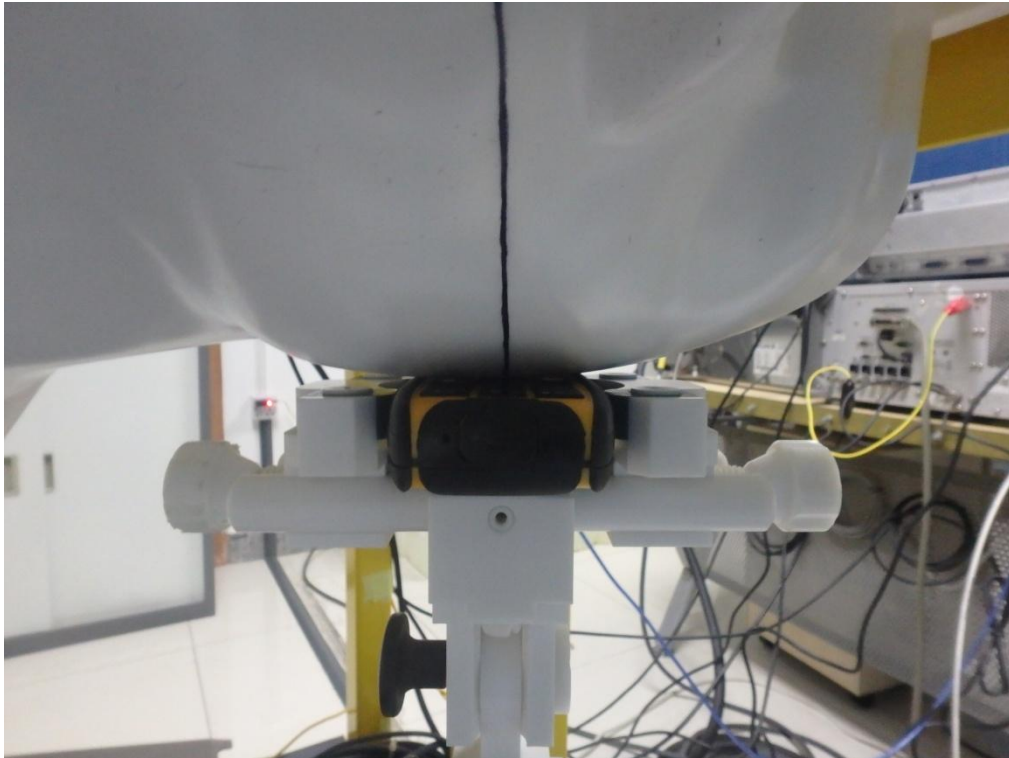


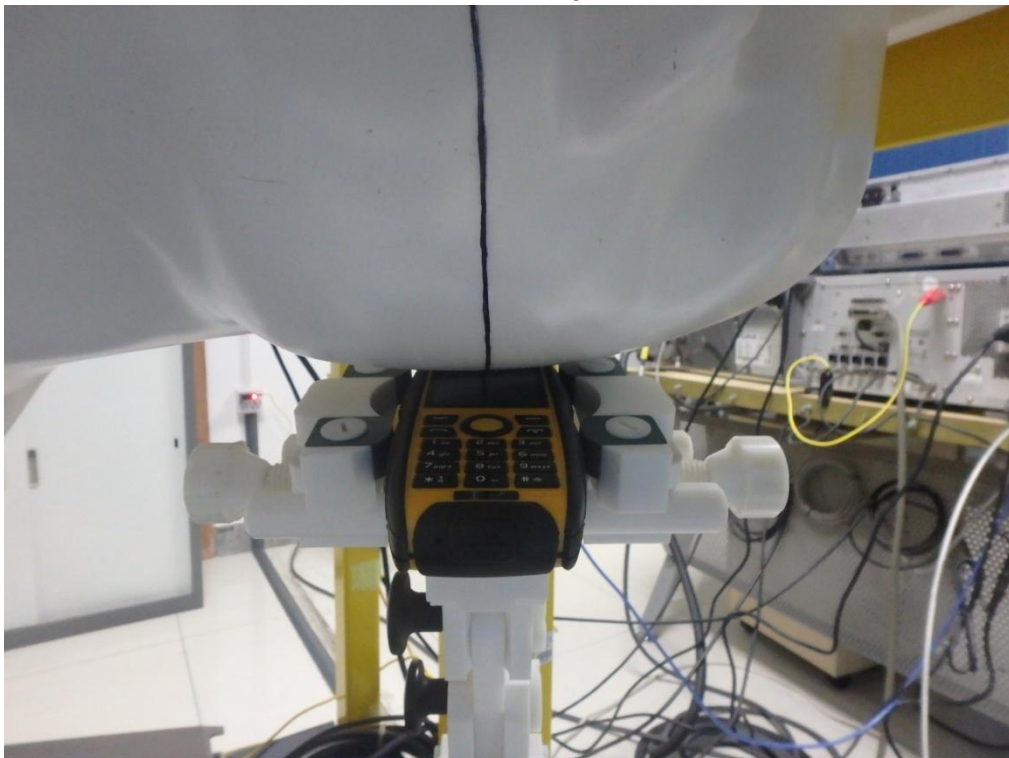
## TEST SETUP PHOTOGRAPHS & EUT PHOTOGRAPHS

### Test Setup Photographs

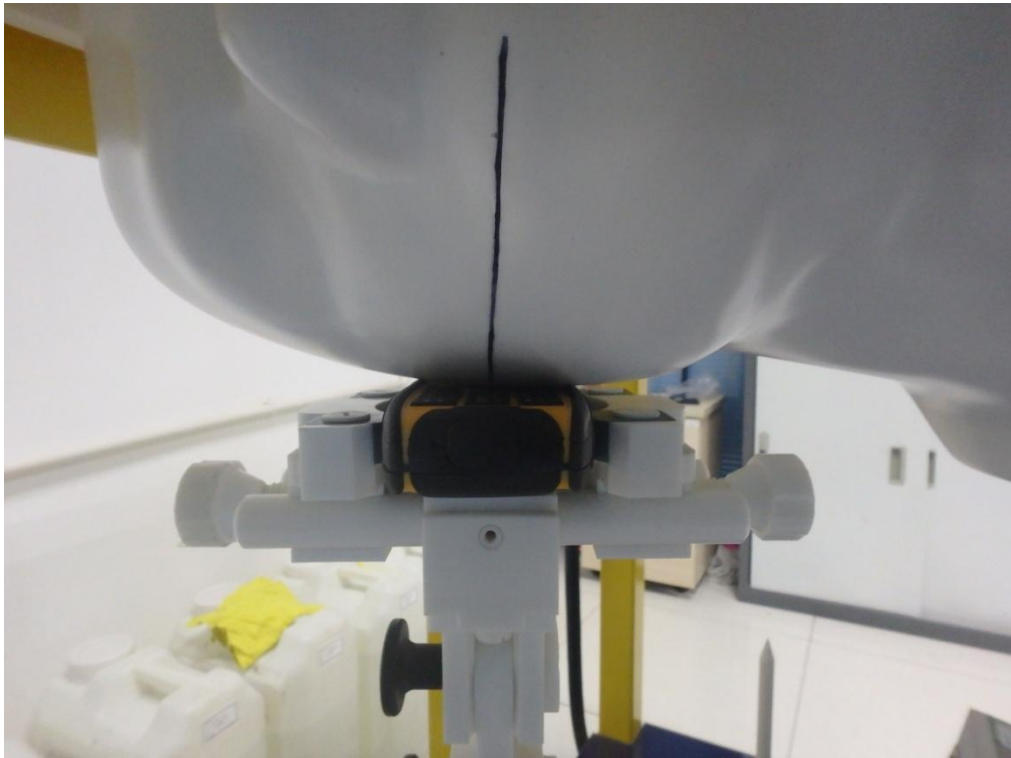
LEFT- CHEEK TOUCH



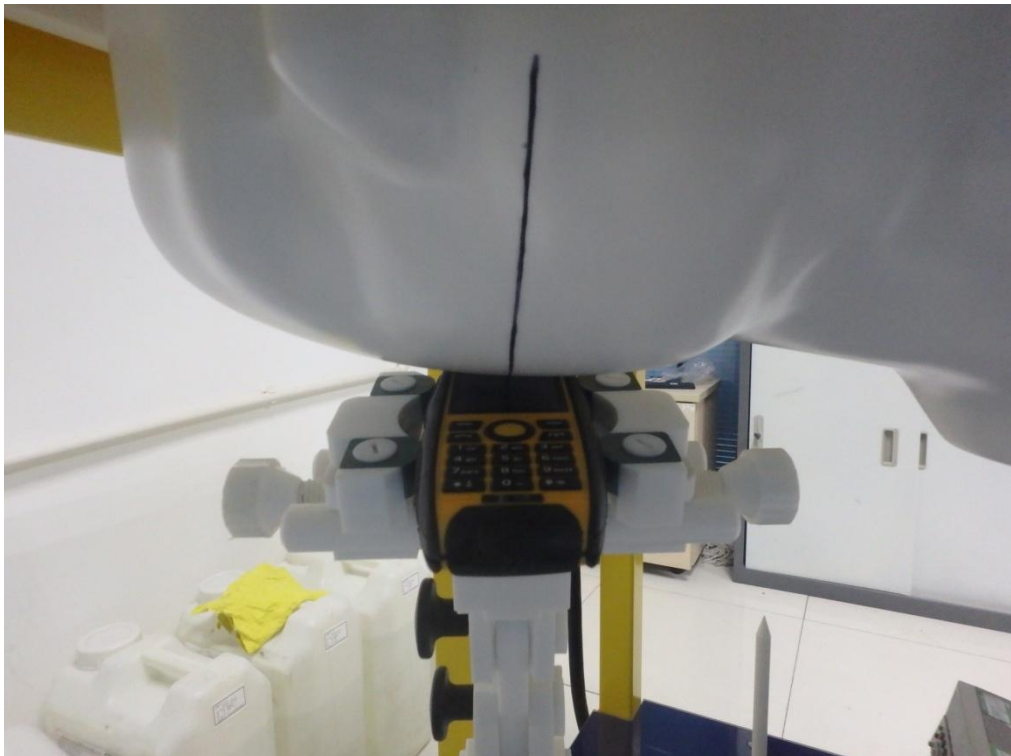
LEFT-TILT 15<sup>0</sup>



RIGHT- CHEEK TOUCH



RIGHT-TILT 15°



Body Back 5mm



Body Front 5mm



Edge 1(Top)



Edge 2(Right)





Edge 3(Bottom)

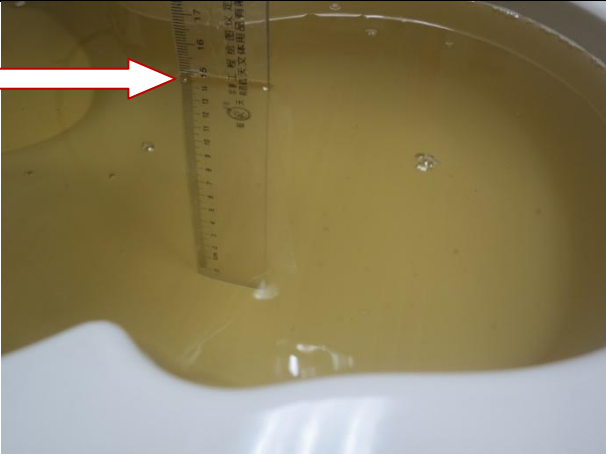





Edge 4(Left)



**DEPTH OF THE LIQUID IN THE PHANTOM—ZOOM IN**

Note : The position used in the measurement were according to IEEE 1528-2013

<p>850MHz head</p>  A photograph showing a ruler placed vertically inside a white container filled with yellow liquid. A red arrow points to the liquid surface, which is at approximately the 15.5 cm mark on the ruler.	<p>850MHz body</p>  A photograph showing a ruler placed vertically inside a white container filled with yellow liquid. A red arrow points to the liquid surface, which is at approximately the 19.5 cm mark on the ruler.
<p>1900MHz head</p>  A photograph showing a ruler placed vertically inside a white container filled with clear liquid. A red arrow points to the liquid surface, which is at approximately the 15.5 cm mark on the ruler.	<p>1900MHz body</p>  A photograph showing a ruler placed vertically inside a white container filled with yellow liquid. A red arrow points to the liquid surface, which is at approximately the 19.5 cm mark on the ruler.

## EUT PHOTOGRAPHS

### TOTAL VIEW OF EUT



### TOP VIEW OF EUT

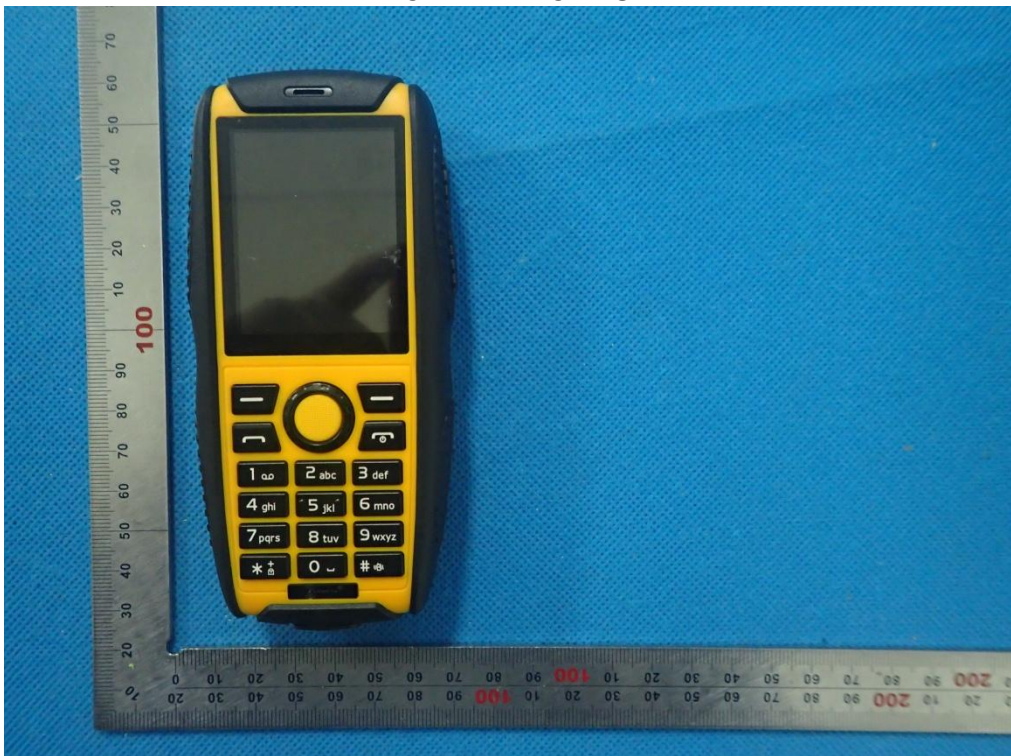




BOTTOM VIEW OF EUT



FRONT VIEW OF EUT





BACK VIEW OF EUT



LEFT VIEW OF EUT



RIGHT VIEW OF EUT

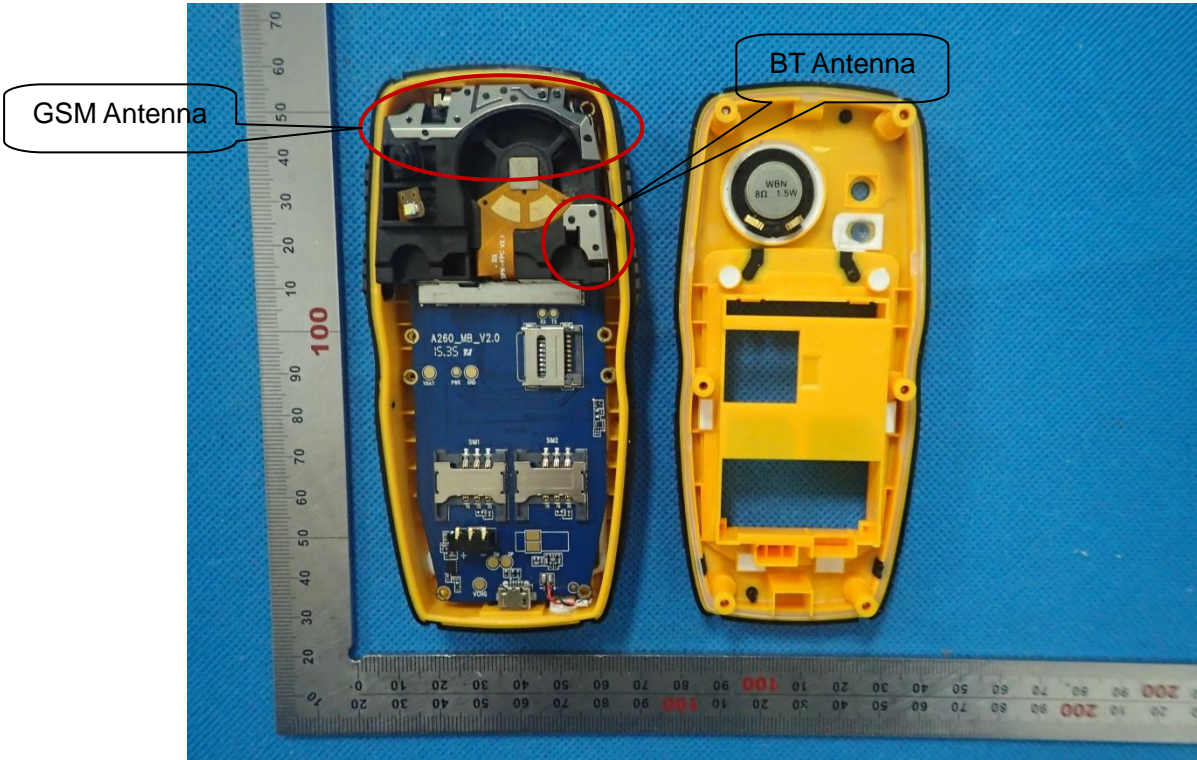


OPEN VIEW OF EUT-1





OPEN VIEW OF EUT-2

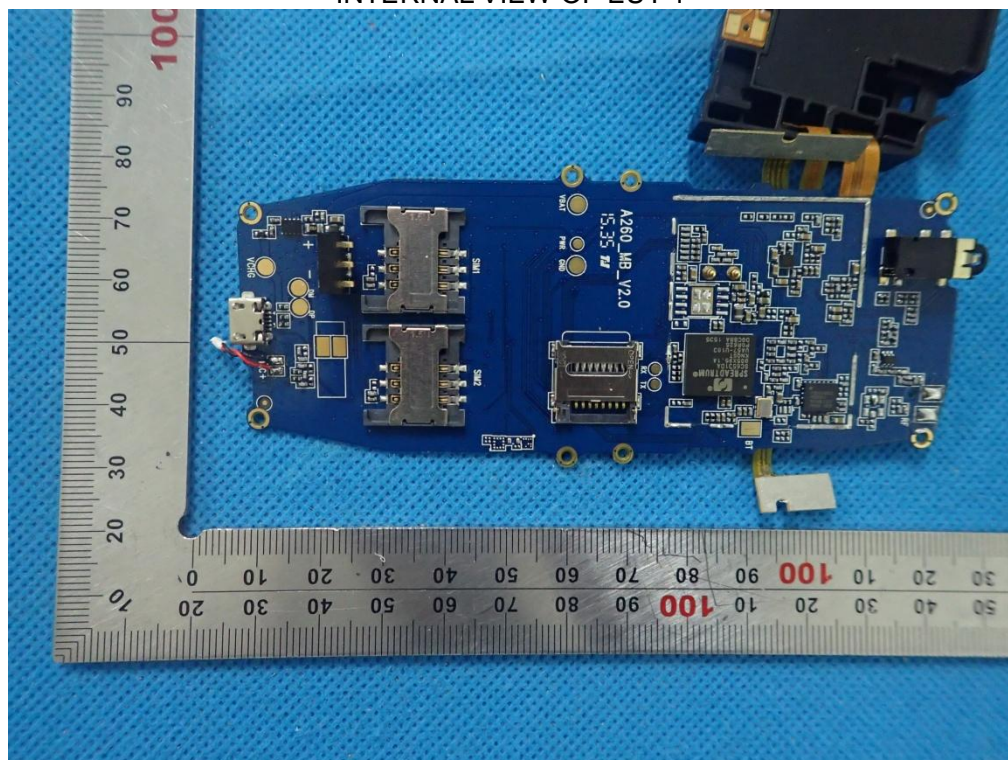


OPEN VIEW OF EUT-3





INTERNAL VIEW OF EUT-1



INTERNAL VIEW OF EUT-2

