

MX 3 IPTV Set Top Box Version 1.0 Quick Start Guide

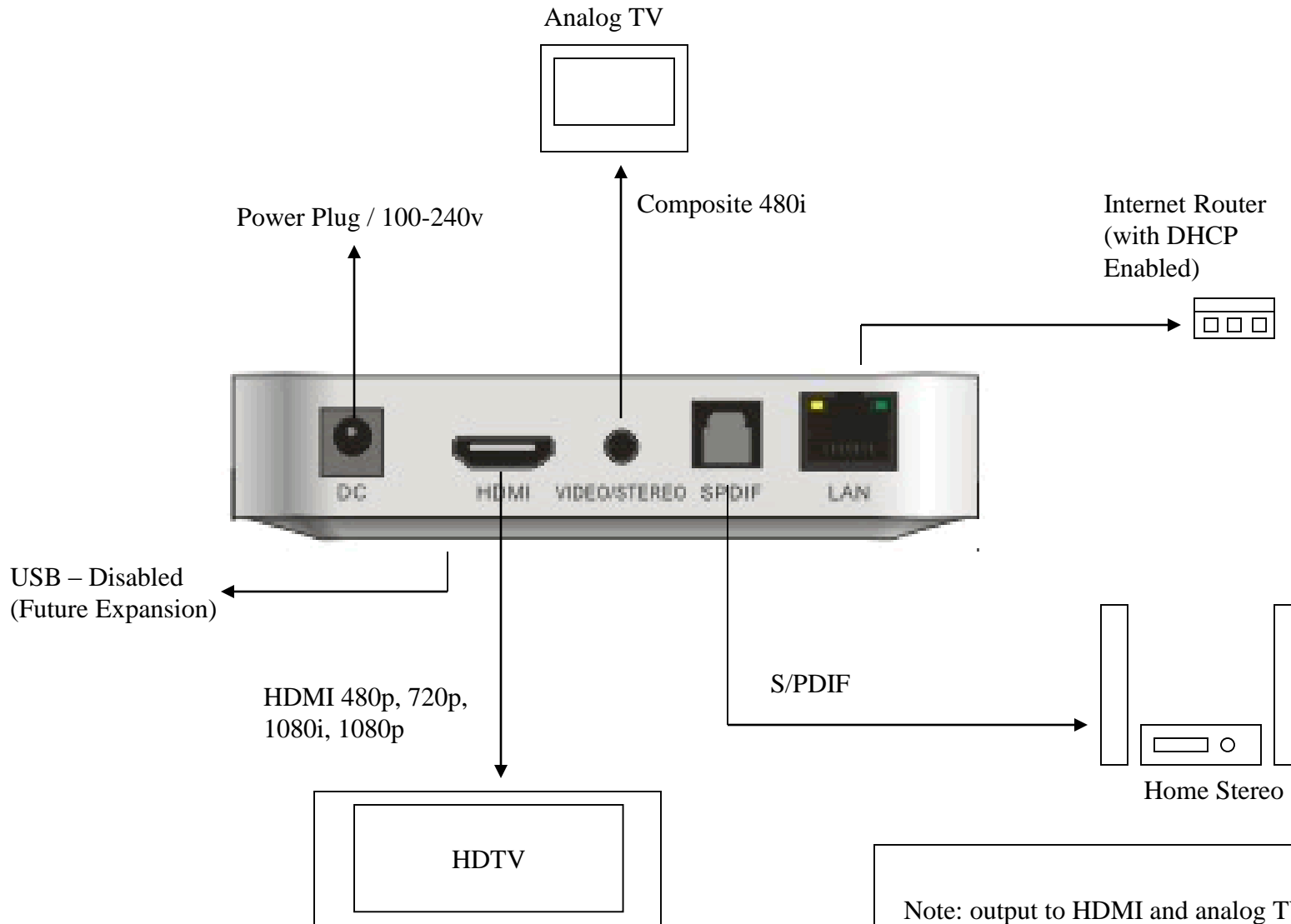


Notice

TRADEMARKS

The trademarks, logos and service marks used in this document are the property of MatrixStream Technologies, Inc. or other third parties. No one is permitted to use these trademarks, logos, and service marks without the prior written consent of MatrixStream Technologies, Inc. or the respective third-party owner. The use of a third-party trademark, logo, or service mark in this document does not indicate MatrixStream Technologies, Inc. as a source of a product, but is intended to indicate a product from (or associated with) a particular third party.

How To Connect



Note: output to HDMI and analog TV cannot be set at the same time, please go to setup in the main menu to select one or the other.

Remote and Front Panel

Power on / Standby Mode



Menu and volume mute

Volume up and down button

Channel up and down (TV mode)
and menu up down left and right

Menu

EPG Guide

Back Button

Number Input Buttons

Blue Light – log on to the set IPTV service

Red light – IPTV service not enabled



TV Channel

CH 20010

ISP LOGO



ABN Sports HD 10:30 - 11:00

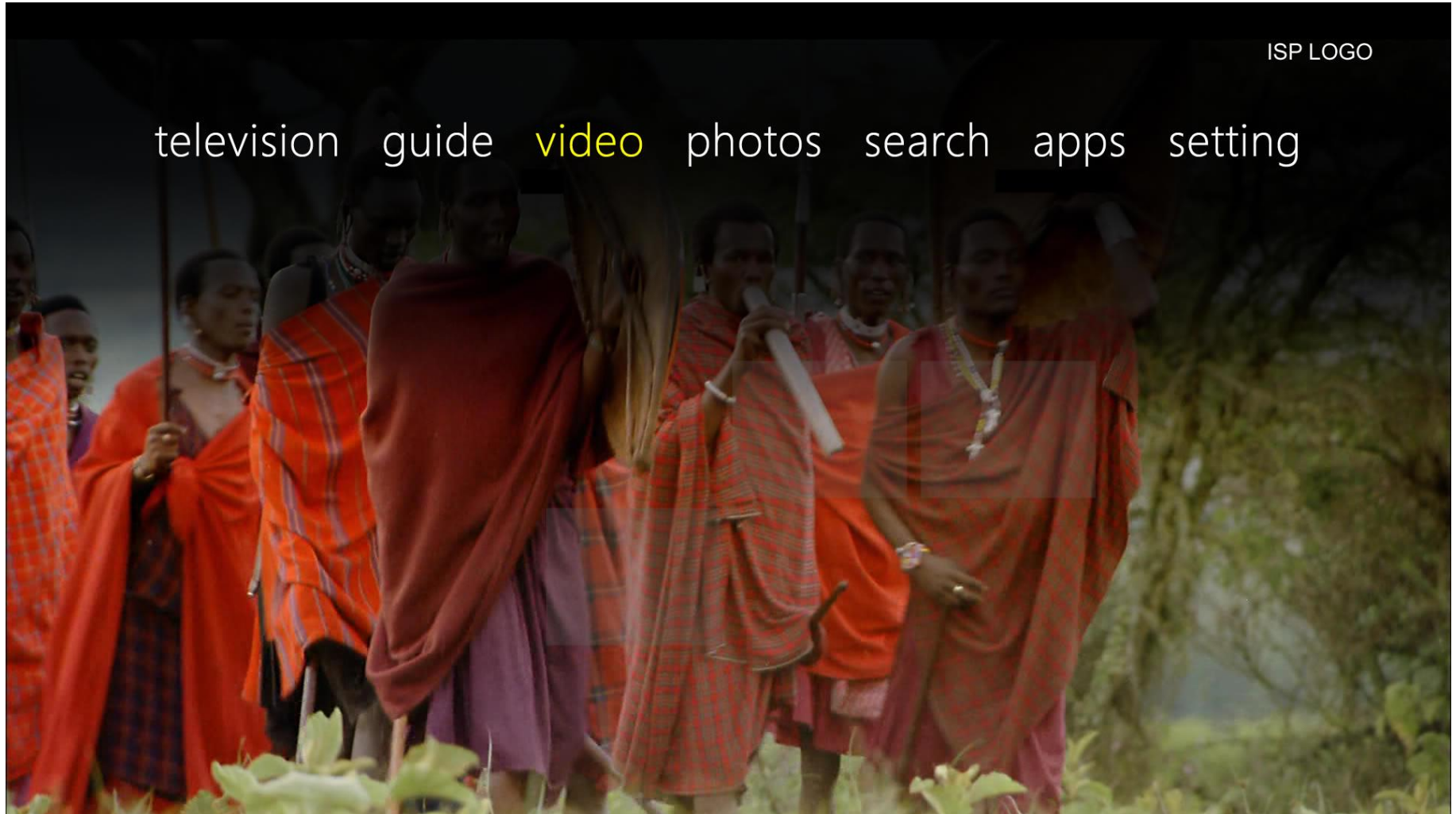
5.1

HD

Beach Sports highlight in high definition 1080p. Today's highlight include Beckham playing beach volleyball.

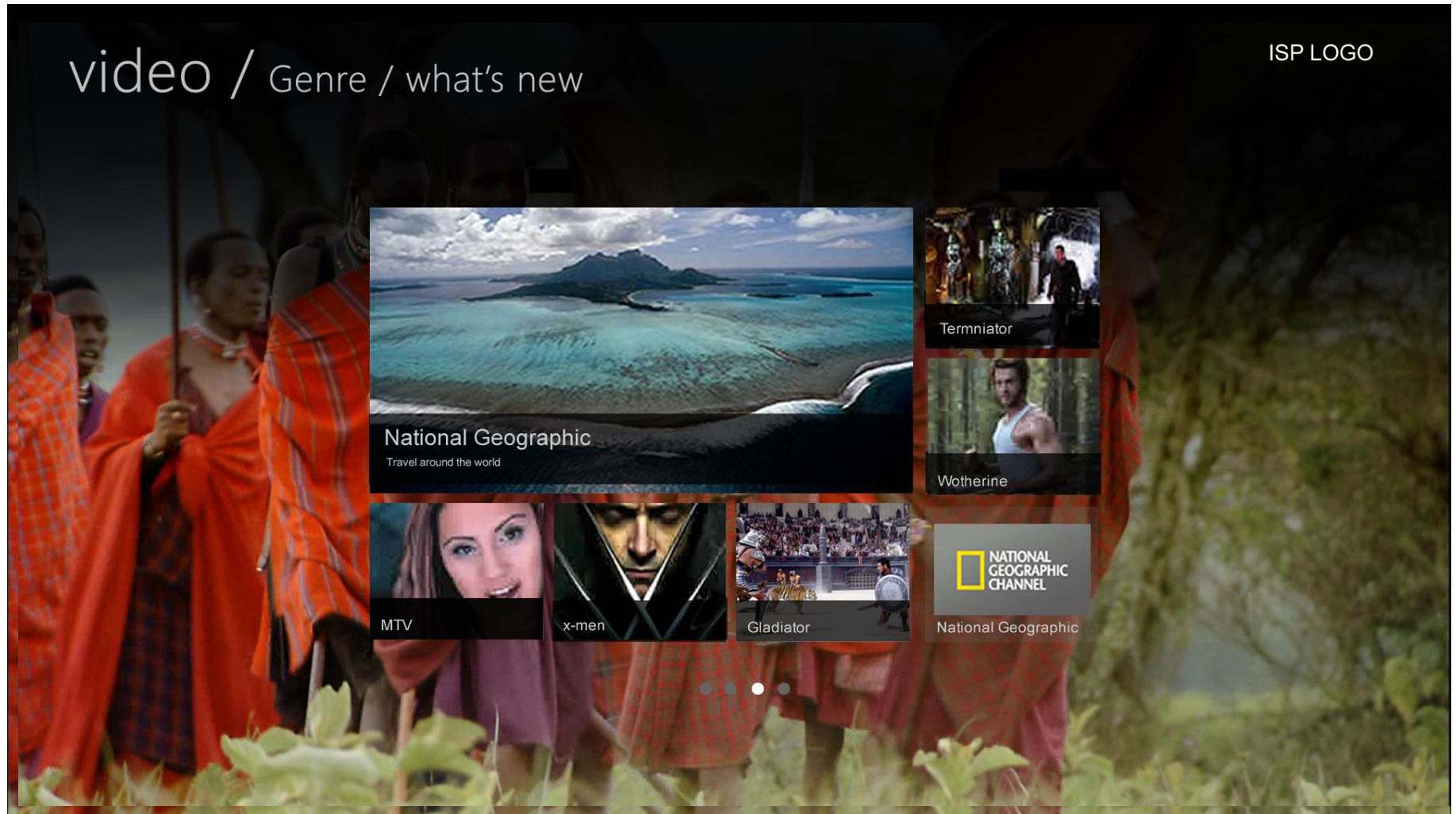
Next: Olympic Highlights in 29 minutes

Menu Bar



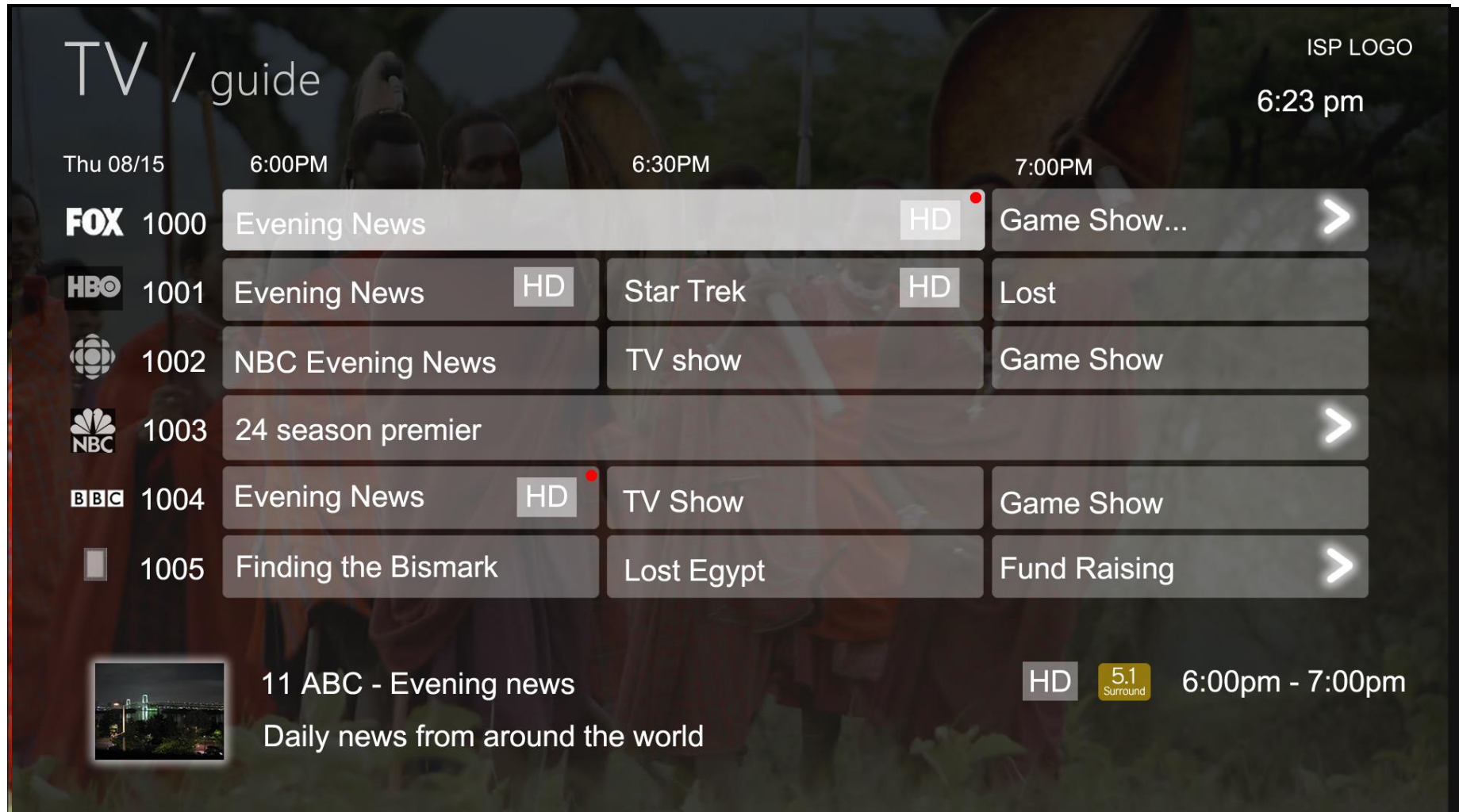
Click on the menu button on the remote to activate the menu bar. Click on the menu button again to deactivate the menu bar.

Video on Demand Screen



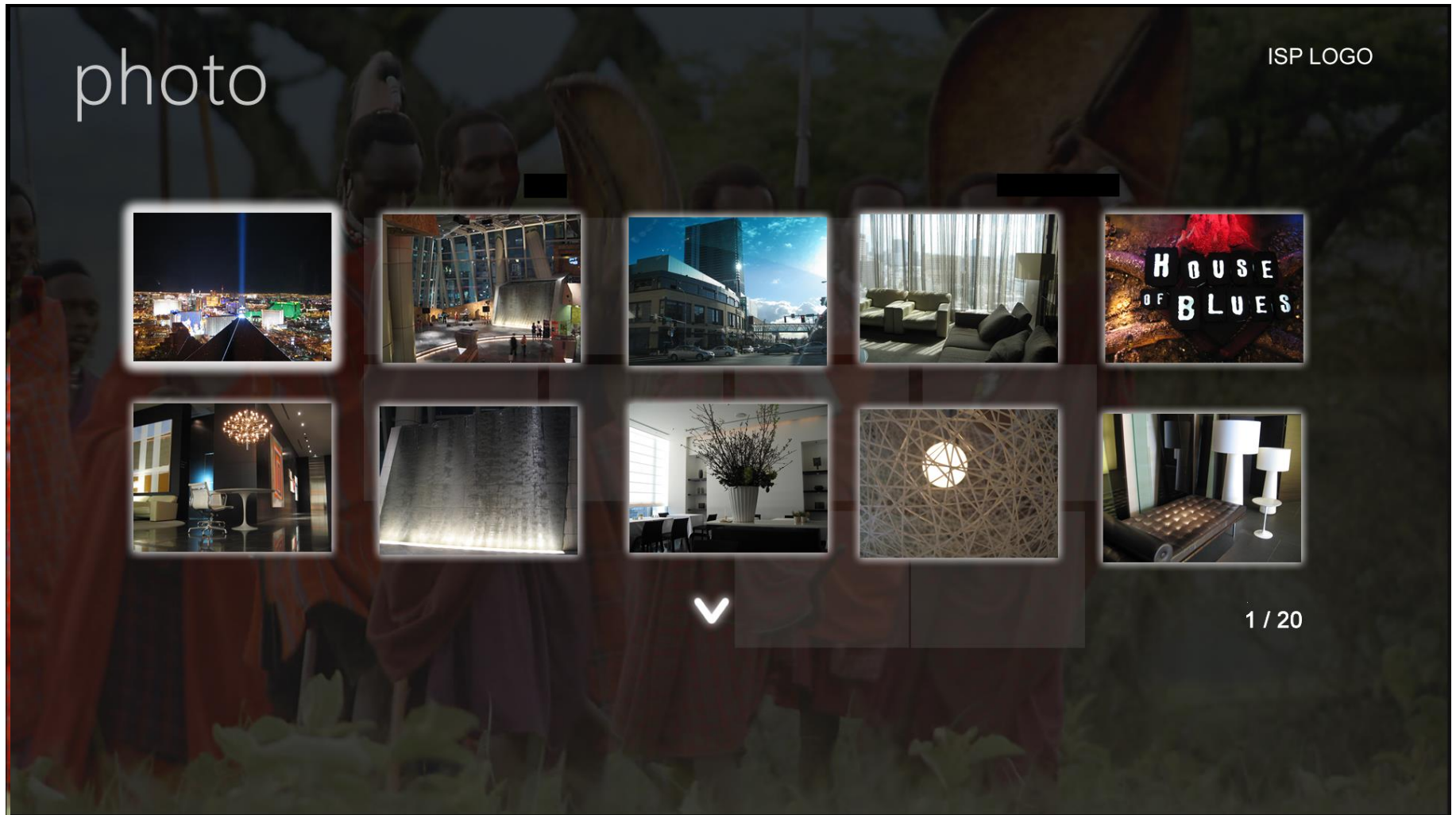
When you select video on the menu, the video on demand screen will show up. You can select the genre and video title.

Guide Screen



When you select guide on the menu, the channel guide will appear. You can select the video content in cloud dvr.

Photo Screen



When you select photo on the menu, the photo screen will display the content on the usb storage. You can select the photo you wish to view.

Search Screen



When you select search on the menu, the search screen appear. You can search the video content on video on demand or cloud DVR.

Setting Screen

When you select settings on the menu, the settings screen appear. The settings screen has the following menu:

General – You can see the software version, language and update firmware

Audio – You can select audio output

Video – You can select video output

Network – You can select network type (wired or wireless)

Activation – You can activate this box with the MatrixStream server

FCC Warning

This equipment has been tested and found to comply with the limits for a Class B digital device, pursuant to part 15 of the FCC Rules. These limits are designed to provide reasonable protection against harmful interference in a residential installation. This equipment generates, uses and can radiate radio frequency energy and, if not installed and used in accordance with the instructions, may cause harmful interference to radio communications. However, there is no guarantee that interference will not occur in a particular installation. If this equipment does cause harmful interference to radio or television reception, which can be determined by turning the equipment off and on, the user is encouraged to try to correct the interference by one or more of the following measures:

- Reorient or relocate the receiving antenna.
- Increase the separation between the equipment and receiver.
- Connect the equipment into an outlet on a circuit different from that to which the receiver is connected.
- Consult the dealer or an experienced radio/TV technician for help.

Caution: Any changes or modifications to this device not explicitly approved by manufacturer could void your authority to operate this equipment.

This device complies with part 15 of the FCC Rules. Operation is subject to the following two conditions: (1) This device may not cause harmful interference, and (2) this device must accept any interference received, including interference that may cause undesired operation.

This equipment complies with FCC radiation exposure limits set forth for an uncontrolled environment. This equipment should be installed and operated with minimum distance 20cm between the radiator & your body.