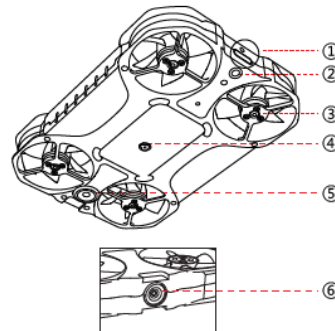


1, Download APP

For Android user, please search Keyshare from Huawei store, Google Play store, 360 or Baidu mobile assistant; for IOS user, please search Keyshare from App store.

2, Aircraft Structure

- 1) Indicators , Charging & USB Interface
- 2) On-off
- 3) Motors & Propellers
- 4) Optical flow sensor
- 5) Ultrasonic sensor
- 6) Camera Lens

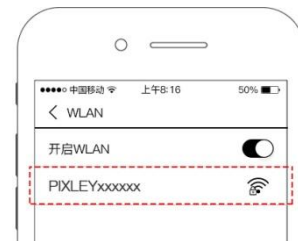


3, Turn-on

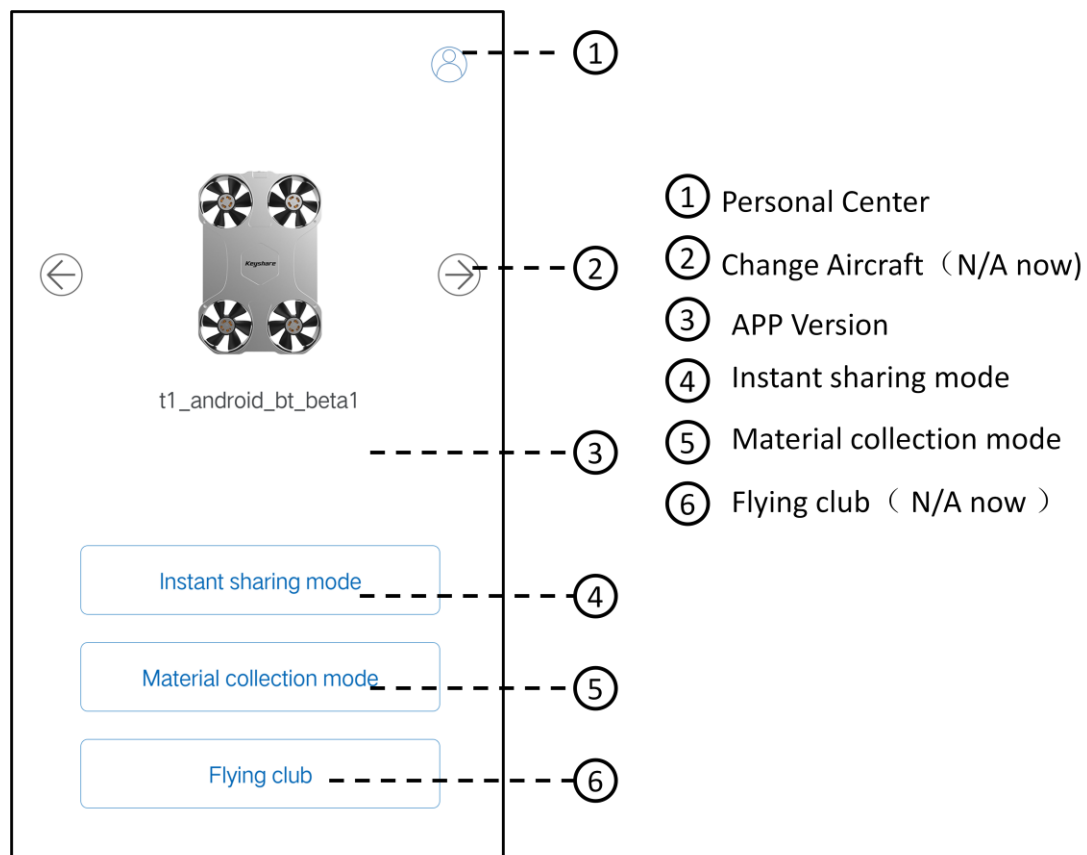
Hold on-off button for 2 seconds and keep aircraft staying still, until aircraft sounds“Di-Di-Di”-self-checking ready.

4, Connect WiFi

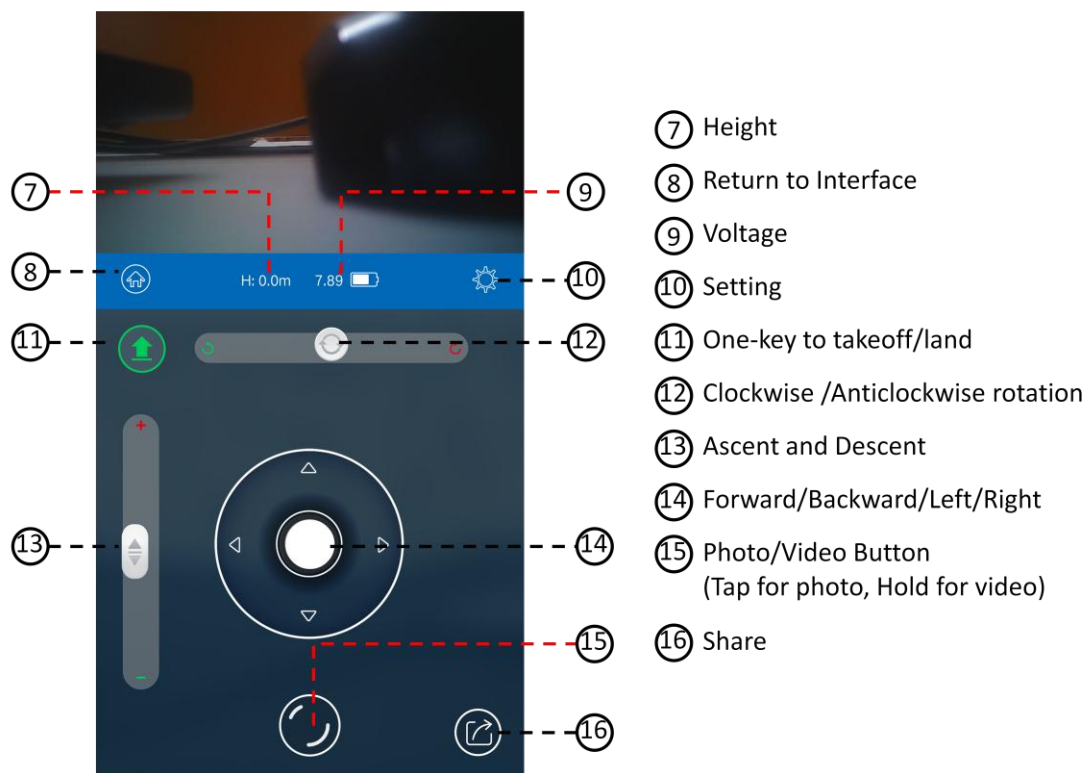
Turn on the Mobile WiFi, search WiFi: PIXLEYxxxxxx.
Initial password: 1234567890, click “Connect”.



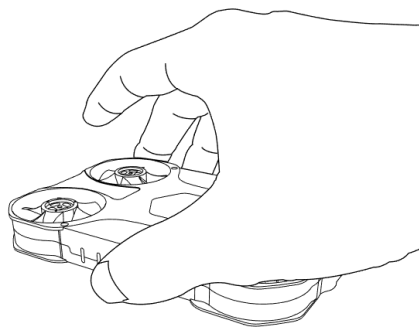
5, Open APP



6, Take-off (Take "Instant Sharing Mode" as example)



As below photo, Place the aircraft level in certain height (do not place on the ground), after the height number showed in the APP interface is stable, click take-off button, the APP will display 3 seconds countdown, once end, release aircraft, aircraft will hover in this height.



7, Landing

1) Grasp for landing

Grasp aircraft and rotate aircraft 180°, propellers stop working.

2) one-key landing

Click one-key landing button, aircraft will descend at an even speed, propellers stop working.

3) Low-power landing

When the voltage is 6.6V, APP will remind low-power status; when it is lower to 6.4V, aircraft will force descending to ground, propellers stop working.

8, Turn-off

Hold on-off button for 2 seconds, aircraft will be off.

9,Photo/Video

1) Photo

In the instant sharing mode, tap button for shooting, photos will be stored in the phone.

In the material collection mode, tap button for shooting (photo key and video key are relatively independent).

2) Video

In the instant sharing mode, hold button for record, the longest record is 10 seconds. (video resolution of android phone is 720p, IOS system is 480p.) Video will be stored in the phone, supporting a key sharing;

In the material collection mode, tap video key for record, the video resolution is 1080P.

3) Share

In the instant sharing mode, click the sharing button for SNS (social network sharing)

In the material collection mode, please download the video and photos in the album to share.

Attention: For Android, before sharing, required to turn off aircraft WIFI, and connect 3G or 4G network.

4) Download and Copy photos (Photos taken only in Material Collection Mode)

Way 1) Connect mobile with aircraft correctly, enter the material collection mode, click album in right corner of the APP interface ,preview photos and videos, then select and download to local

Way 2) Turn on the aircraft power, after the aircraft self-checking finished, connect aircraft with computer via TYPE - C cable, the aircraft will be read as U disk, then copy or delete photos and videos.(after connecting USB, the WIFI will be turned off automatically, if need WIFI,unplug USB and restart)

5) File Directory

Android path : memory/PIXLEY / Local Album;

IOS path: only be viewed in the phone system album.

10,Indicator Light

(1) Turn-on Status

After turn-on aircraft, the indicator light is Green.

Status	Power indicator light	Power Level
Lock	blue light flash shortly	Sufficient
Lock	Blue light flash quickly	Insufficient
Flight	Blue light flash alternately	Sufficient
Flight	Blue light flash quickly	Insufficient

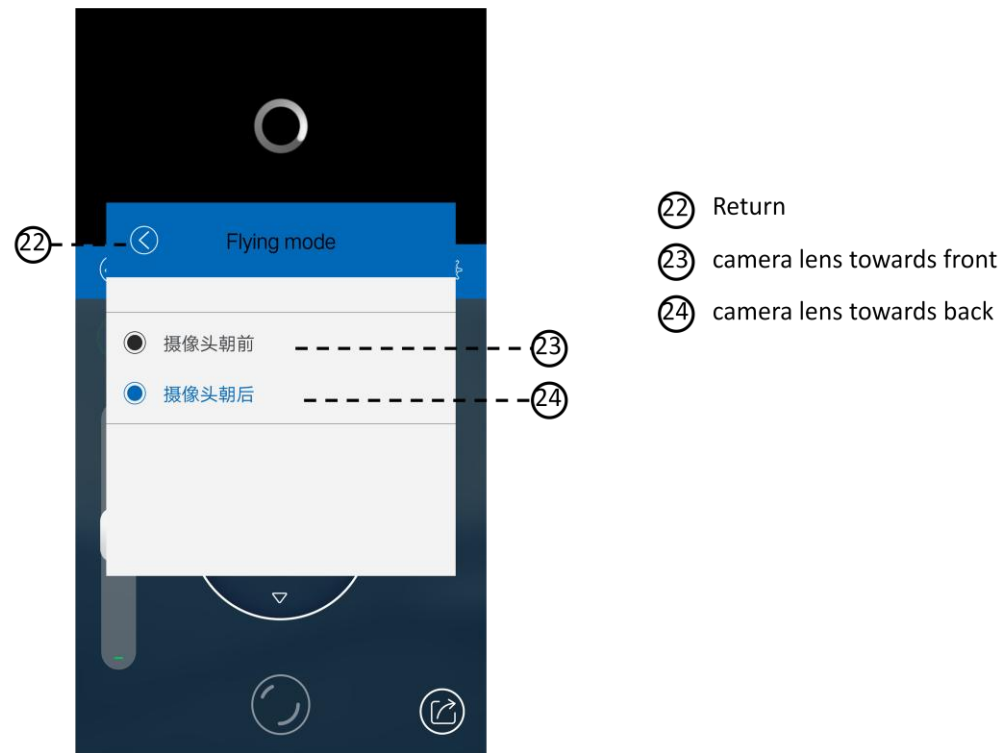
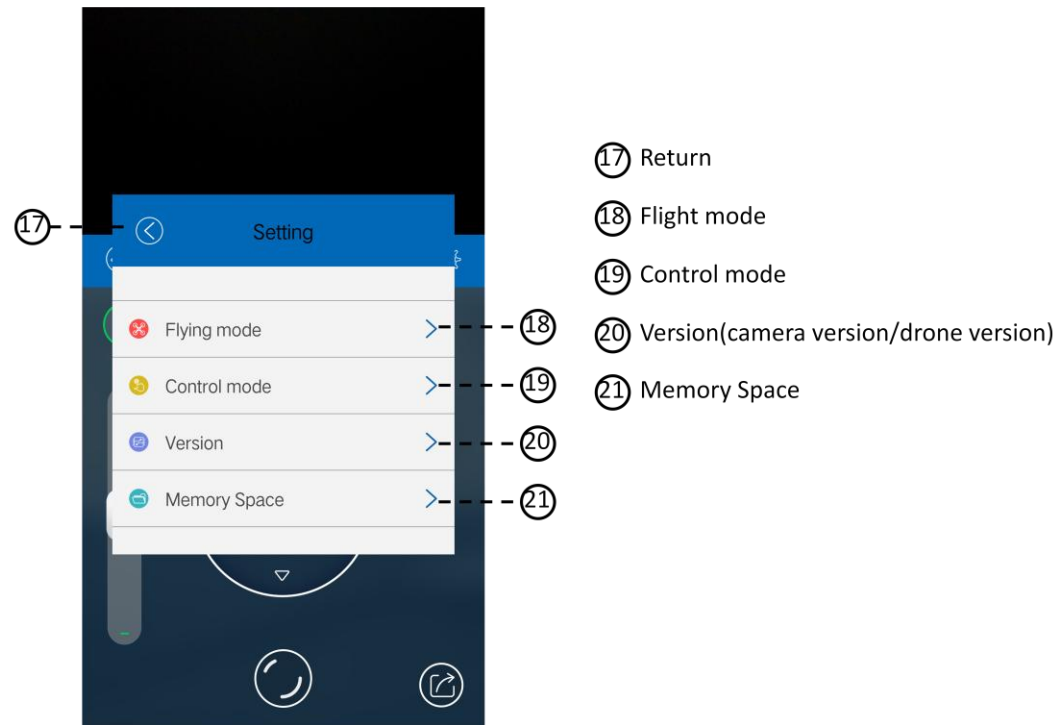
(2) Charging Status

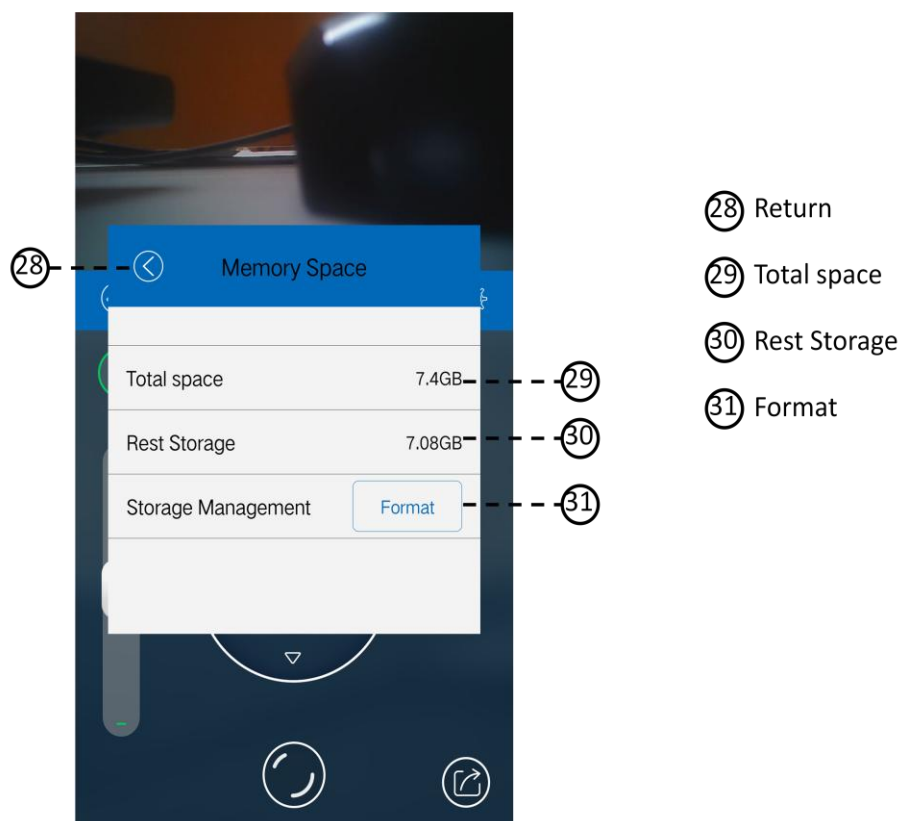
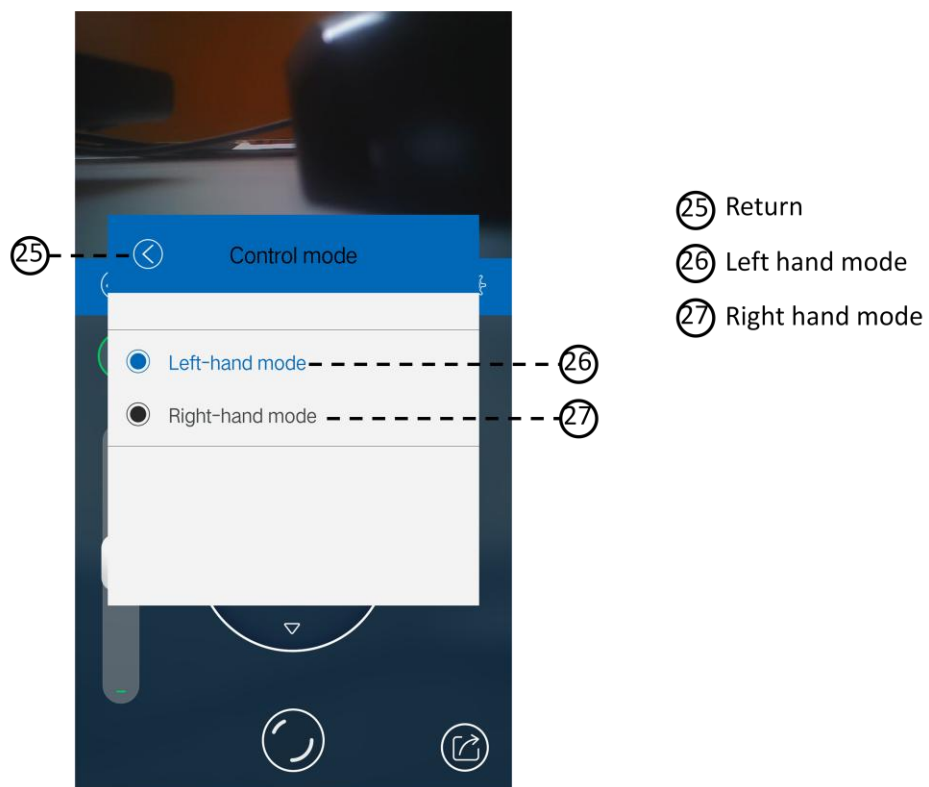
Turn off the aircraft when charging. Use standard TYPE - C data line, Max 5V 2A to charge,

Any Power bank and mobile phone power adapter are available.

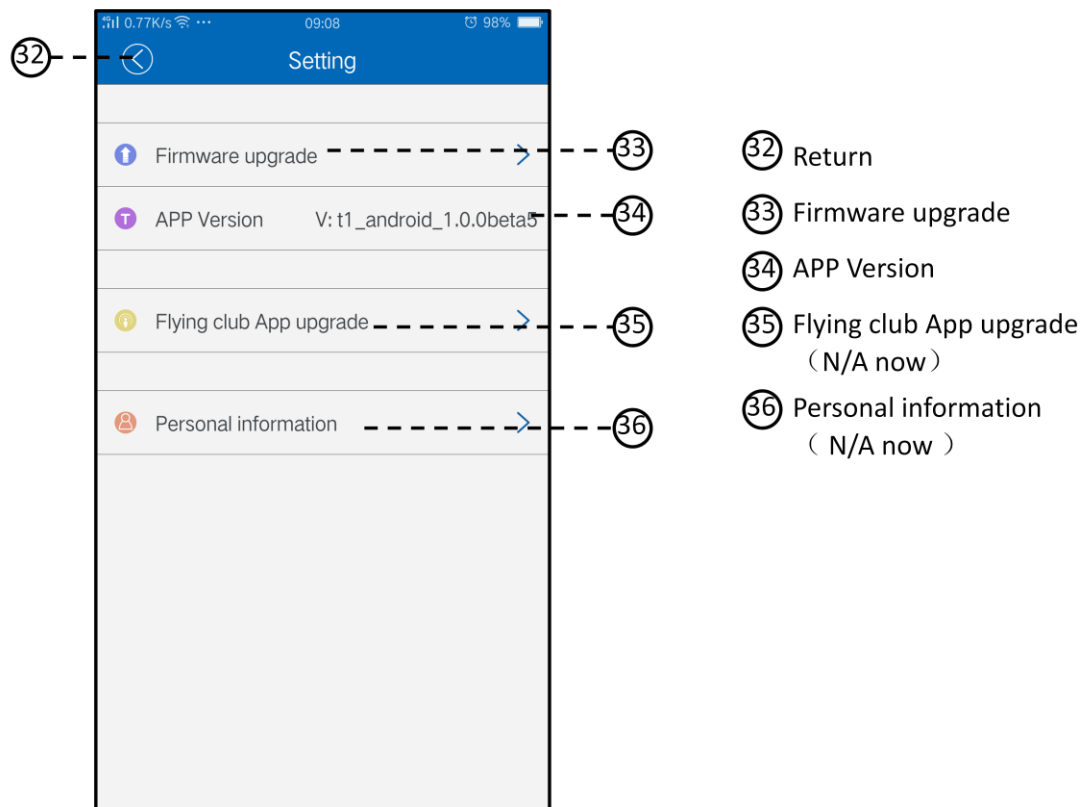
Power indicator light	Status	Current Power Level
Red light on	insufficient power, under charging	
Green light on	full charge,charging finished	

11, Settings





12, Personal Center



13. Attention

- 1) Please fly under the bright environment and on a clear texture ground.
- 2) Do not fly on the carpet or uneven ground, which will affect the ultrasonic height detection.
- 3) Do to fly back and forth on the ground with obvious height difference. Especially from higher ground to lower .(for example, from the top of the building, from the bridge, from the cliff to outer, etc.).
- 4) Do not to fly under the strong wind.
- 5) Do not to fly above the water, the dark ground , and undulating grass, etc
- 6) Do not to fly on the ramp.
- 7) The default each flight log is recorded and record recent 8 times flight. Once the log memory is full, the log will be deleted automatically when turn on the aircraft, at this time, the time of aircraft self-checking will longer about 20 seconds than usual, it is normal. After logs are deleted, start-up returns to normal.

Warning Statement

This device complies with part 15 of the FCC Rules. Operation is subject to the following two conditions: (1) This device may not cause harmful interference, and (2) this device must accept any interference received, including interference that may cause undesired operation.

Any Changes or modifications not expressly approved by the party responsible for compliance could void the user's authority to operate the equipment.

Note: This equipment has been tested and found to comply with the limits for a Class B digital device, pursuant to part 15 of the FCC Rules. These limits are designed to provide reasonable protection against harmful interference in a residential installation. This equipment generates uses and can radiate radio frequency energy and, if not installed and used in accordance with the instructions, may cause harmful interference to radio communications. However, there is no guarantee that interference will not occur in a particular installation. If this equipment does cause harmful interference to radio or television reception, which can be determined by turning the equipment off and on, the user is encouraged to try to correct the interference by one or more of the following measures:

- Reorient or relocate the receiving antenna.
- Increase the separation between the equipment and receiver.
- Connect the equipment into an outlet on a circuit different from that to which the receiver is connected.
- Consult the dealer or an experienced radio/TV technician for help.

This equipment complies with FCC radiation exposure limits set forth for an uncontrolled environment. This equipment should be installed and operated with minimum distance 20cm between the radiator & your body.