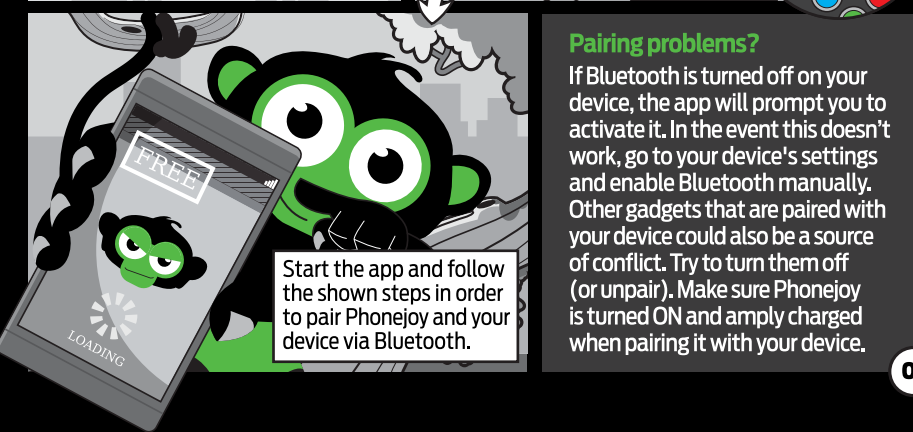
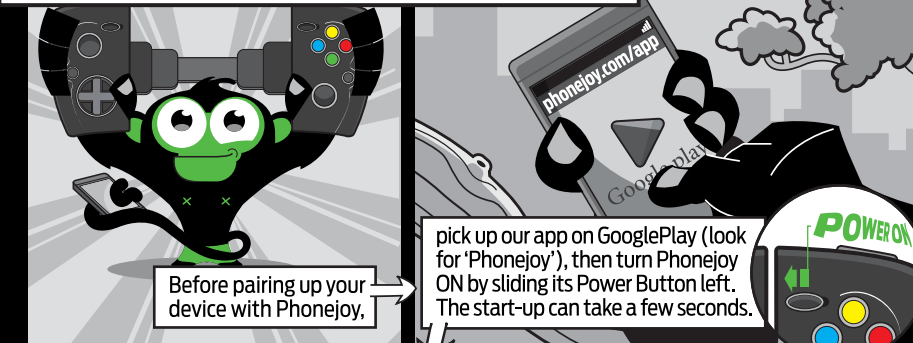
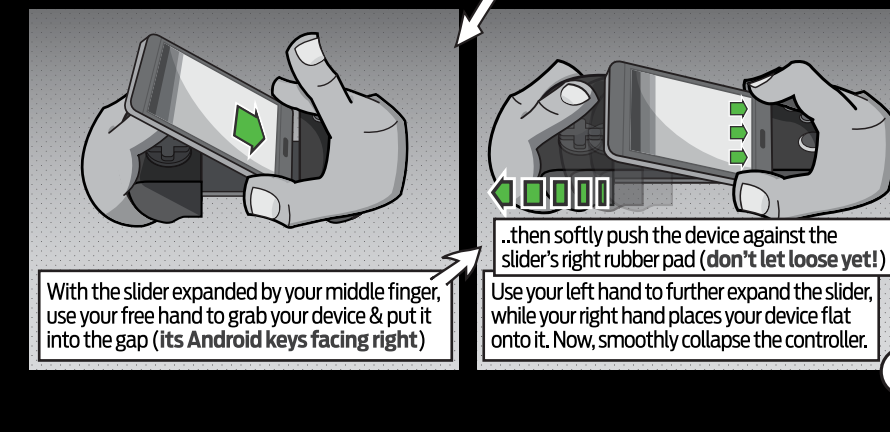
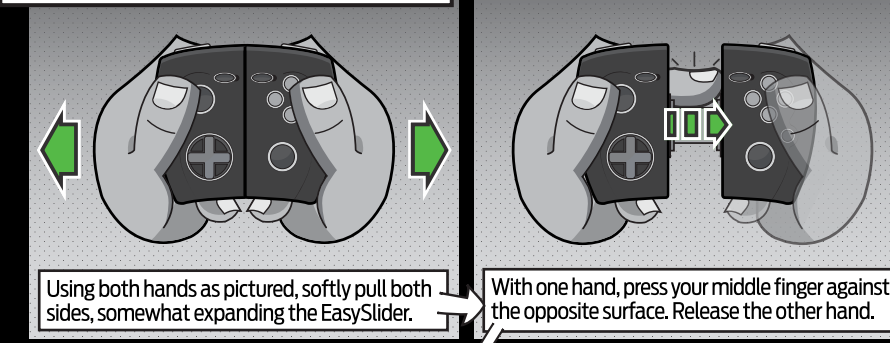


PAIRING PHONEJOY WITH YOUR DEVICE



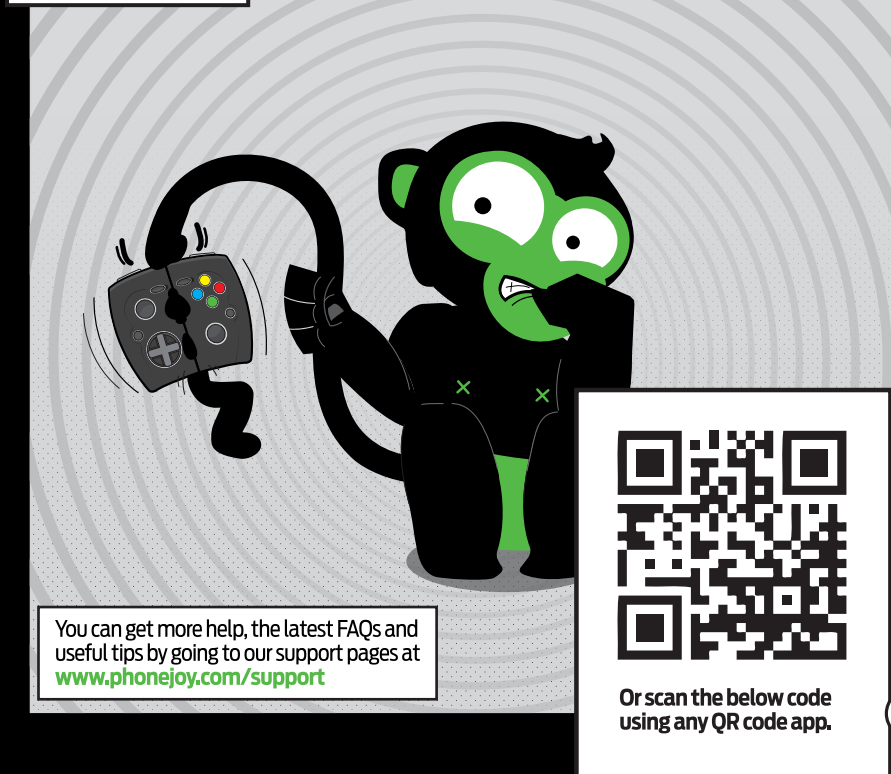
01

HOOKING UP YOUR DEVICE



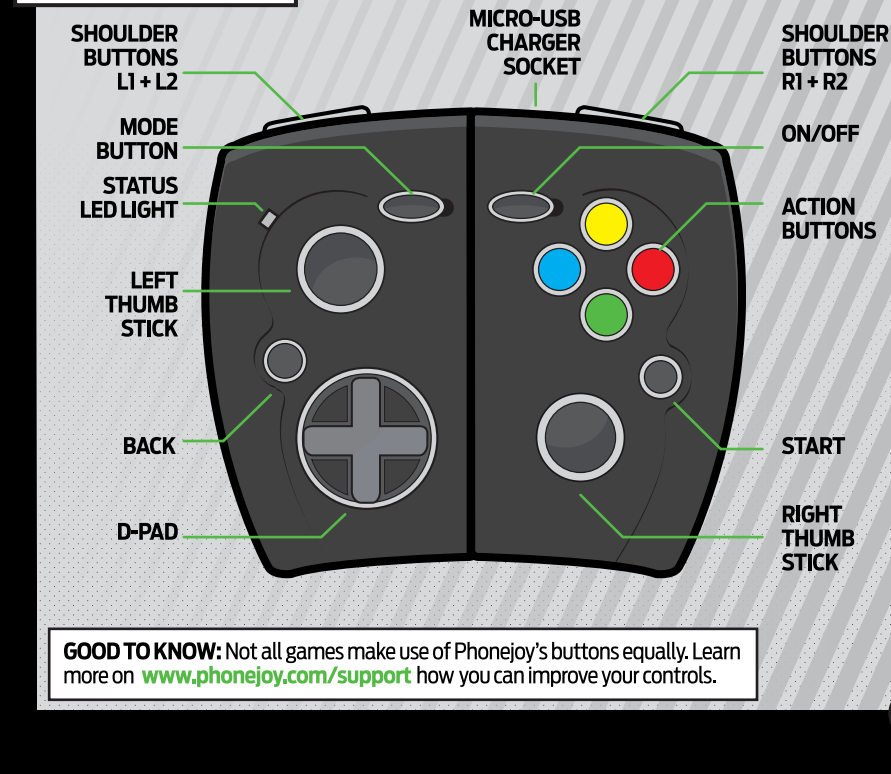
02

NEED HELP?



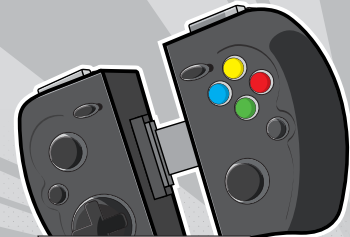
03

THE CONTROLS



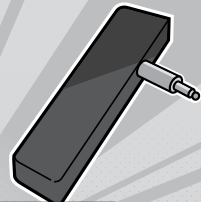
04

THE ESSENTIALS



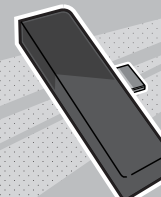
Phonejoy Controller*

Aside from holding your smartphone, Phonejoy can be used remotely with other Android tablets/game systems.



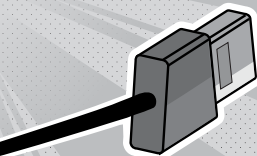
Audio Adapter*

Features a 3.5mm audio jack and 3.5mm audio socket, enabling you to use any headphone or speakers.



Charger Adapter*

While playing with your device secured on Phonejoy's EasySlider, the adapter allows you to charge your device.



Charger Cable*

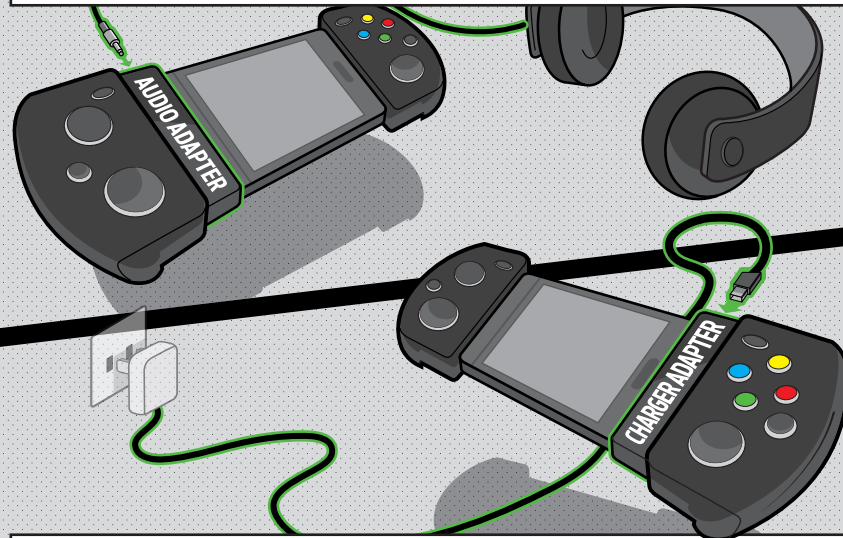
Use the USB/Micro-USB cable to charge the Phonejoy or your device by connecting it to a power source.

*The accessories might not be included, depending on the product/accessory combination purchased.

05

CONNECTING HEADPHONES / CHARGING YOUR DEVICE

The 3.5mm audio adapter allows you to use headphones while being hooked up with your device. Simply plug the adapter's jack into your device's audio socket, then place both into the slider.

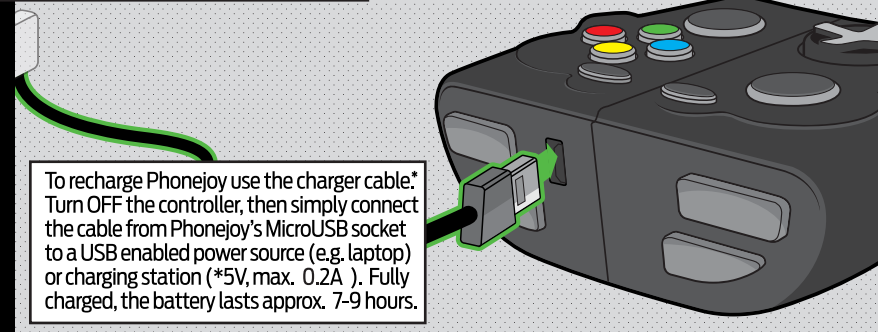


The charger adapter helps you to refuel your smartphone's battery while playing and being hooked into Phonejoy's EasySlider. Simply plug the charger adapter's Micro-USB connector into your device, then put the Micro-USB side of the included charger cable into the adapter's Micro-USB socket. Finally, connect the cable to a USB-enabled power source or charging station (sold separately).

*The accessories might not be included, depending on the product/accessory combination purchased.

06

CHARGING PHONEJOY



To recharge Phonejoy use the charger cable.* Turn OFF the controller, then simply connect the cable from Phonejoy's MicroUSB socket to a USB enabled power source (e.g. laptop) or charging station (*5V, max. 0.2A). Fully charged, the battery lasts approx. 7-9 hours.

BATTERY CHARGING TIME

Fully charging your Phonejoy will take a little more than one hour (when battery is fully drained).



WHILE USING PHONEJOY DON'T CHARGE ITS BATTERY

Due to technical limitations, it is **NOT** recommended to use the controller while recharging it. This could damage your Phonejoy controller or the charger.

USING PHONEJOY WITH OTHER DEVICES & GAME SYSTEMS

Phonejoy's Bluetooth signal supports distances up to 12 feet (4m). You can use Phonejoy remotely to play on most Android +4.0 tablets or even Android gaming systems, such as the OUYA™. There are many other Android powered devices that support Phonejoy. Simply check our frequently updated list of compatible devices by visiting: www.phonejoy.com/devices

*The charger cable might not be included, depending on the product/accessory combination purchased.

07

A COUPLE OF STEPS TO GET STARTED



BEFORE HOOKING UP YOUR DEVICE WITH PHONEJOY PLEASE FOLLOW THE STEPS ON THE NEXT PAGES

Power is so low that no RF exposure calculation is needed.

FCC statements:

This device complies with part 15 of the FCC rules. Operation is subject to the following two conditions: (1) this device may not cause harmful interference, and (2) this device must accept any interference received, including interference that may cause undesired operation.

NOTE: The manufacturer is not responsible for any radio or TV interference caused by unauthorized modifications or changes to this equipment. Such modifications or changes could void the user's authority to operate the equipment.

NOTE: This equipment has been tested and found to comply with the limits for a Class B digital device, pursuant to part 15 of the FCC Rules. These limits are designed to provide reasonable protection against harmful interference in a residential installation. This equipment generates uses and can radiate radio frequency energy and, if not installed and used in accordance with the instructions, may cause harmful interference to radio communications. However, there is no guarantee that interference will not occur in a particular installation. If this equipment does cause harmful interference to radio or television reception, which can be determined by turning the equipment off and on, the user is encouraged to try to correct the interference by one or more of the following measures:

- Reorient or relocate the receiving antenna.
- Increase the separation between the equipment and receiver.
- Connect the equipment into an outlet on a circuit different from that to which the receiver is connected.
- Consult the dealer or an experienced radio/TV technician for help.