

Welcome to TUNAI and R.A.E.

Thank you for choosing TUNAI R.A.E., Revolution Audiophile Edition. The TUNAI R.A.E. are high-performance in-ear Bluetooth headphones designed to deliver the highest quality mobile personal audio experience combined with the convenience of switching between different soundscapes to fit various genres. This manual will tell you everything you need to know to get the most out of your R.A.E. headphones.

Your R.A.E. headphones can play music streamed wirelessly from your mobile phone, tablet, or computer via Bluetooth and used for wireless telephony. R.A.E. can also play audio while being charged via USB.

R.A.E. has pre-defined three different soundscapes, balance, bass boost, and clarity, into the hardware to fit various music genres. An additional customize mode is also available, allowing you to define personal sound taste through TUNAI Connection app. A physical switch is available to quick switch between soundscapes. The transparency mode enables external sounds, such as conversation or safety announcements, to be heard clearly without removing the headphones. R.A.E. has also partnered with music streaming service KKBOX to provide a hardware button that enables adding the current playback music into the playlist. These features can be enabled and further customized via the TUNAI Connection iOS and Android app available for free.

R.A.E. headphones incorporate a rechargeable battery pack. When fully charged and depending on the degree of Bluetooth, wireless audio codec, and transparency mode use, the battery pack can provide 10+ hours of continuous wireless media streaming with transparency mode disabled and average playback volume levels.

1. Before we start

1.1 Warranty

R.A.E. offers a one-year limited warranty for all products purchased at TUNAI website and through authorized retail partners against material and workmanship under ordinary consumer use from the date of original retail purchase.

Please keep your proof of purchase and packaging. Please be aware that any attempt to disassemble or mis-use of the device could lead to a void of warranty.

The warranty does not cover the following :

- a. Consumable parts (example: exterior coating damage).
- b. Appearance damage.
- c. Damage caused by improper use with other products.
- d. Damage caused by failure to comply with instructions.
- e. Purchase from an unauthorized seller.
- f. Unauthorized disassembly of the product.
- g. Damage caused by accident, abuse, improper use, fire, earthquake or external causes.
- h. Damage caused by exposing devices under extremely high or low temperatures.
- i. Damage caused by placing R.A.E. directly into the water.
- j. Damage caused by using abrasive cleaners.
- k. Damage caused by direct contact with sharp objects.
- l. Damage caused by using non-certified adapters.
- m. Damage caused by using other than inbox USB charging cable.
- n. Damage caused by drop, open, crush, bend, deform, puncture, sherd, microwave, incinerate, paint or insert foreign objects into the earbud.

If you have any other questions, please contact tunai@tunai-creative.com or check with online FAQ at www.tunai-creative.com.

The user manual may be updated from time to time, any update with the user manual can be downloaded from our website www.tunai-creative.com.

1.2 Join the TUNAI family

Sign up and register your membership at TUNAI website to learn more about TUNAI and R.A.E., and get a 6-month extended warranty.

- facebook.com/tunai.global
- youtube.com/tunai
- instagram.com/tunai_creative_eng

2. R.A.E. carton contents

R.A.E. headphones
Micro-USB charging cable
Standard ear tips (small, medium and large)
SpinFit ear tips (small, medium and large)
Ear stabilisers (small, medium)
Documnet pack

3. Getting to know your R.A.E.

3.1 Headphone Physical Buttons

Diagram 1 illustrates the headphone physical buttons.

(以下圖示截取至 [B&W](#) 耳機說明書, 這邊作為參考示意圖)

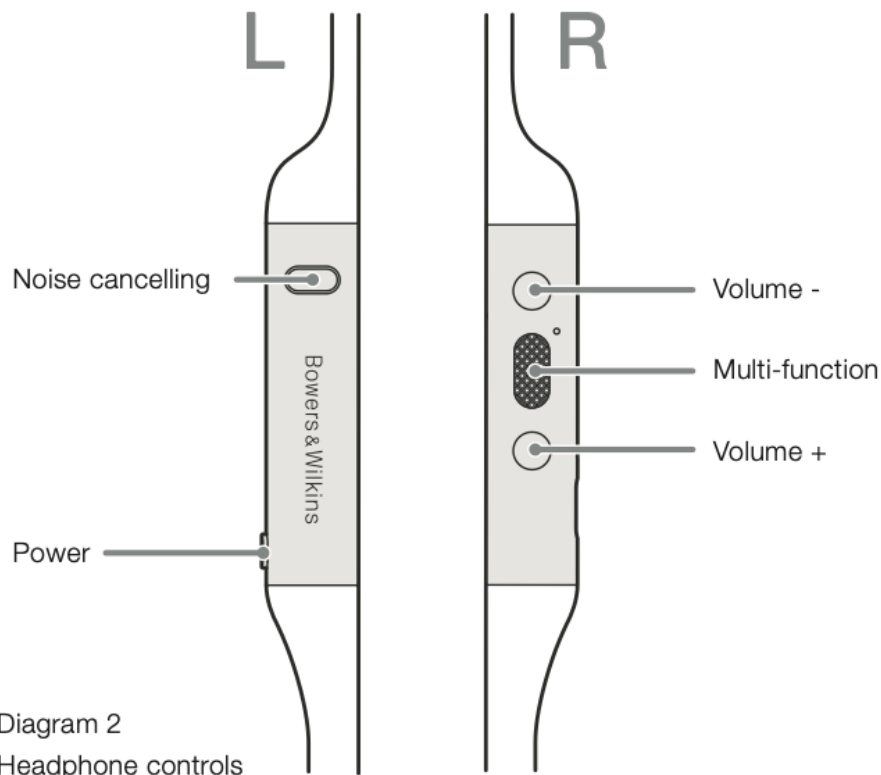


Diagram 1. Headphone controls

3.2 Headphone Controls

Diagram 2 illustrates the headphone controls.

Category	Function	Action	Voice prompt
Power On/Off/Pairing	Switching on	Press and hold the Power button for 2 seconds until the LED starts to blink in blue.	Power on
	Switching off	Press and hold the Power button for 5 seconds until the LED goes off.	Power off
	Enter pairing mode	When R.A.E. is switched off, press and hold the Power button for 5 seconds until LED blinks in blue and red sequentially.	Pairing
Media playback	Play or pause	Press the playback button once	
	Play to next track	Press and hold the volume up button for 3 seconds.	
	Play to previous track	Press and hold the volume down button for 3 seconds.	
Volume control	Increase volume	Press the volume up button once.	
	Lower volume	Press the volume down button once.	
Phone call	Answer incoming call	Press the playback button once.	
	End call	Press the playback button once.	
Voice assistant	Trigger voice assistant	Press and hold the playback button for 3 seconds	
Transparency mode	Enable transparency mode	Press and hold the soundscape switch button for 2 seconds.	Enabling transparency mode
	Disable transparency mode	Press and hold the soundscape switch button for 2 seconds.	Disabling transparency mode
Soundscape switch	Switch between soundscape in sequence	Press the soundscape switch button once.	Voice prompt will speak out the mode name
Add to playlist	Adding current song on KKBOX to playlist	Press the power button once.	Added to collected songs

Diagram 2. Headphone controls

3.3 Status Indicator

Diagram 3 illustrates the status indicator illuminations

Illumination	Operational state
Blink in blue rapidly	Waiting to be paired
Blink in blue slowly	Paired
Blink in blue and red sequentially	Enter pairing mode
Red	Charging

Diagram 3. Status indicator illuminations

3.4 Voice prompt

Diagram 4 illustrates the voice prompt corresponding to the function status.

Function	Voice prompt
Switching on	Power on
Switching off	Power off
Enter pairing mode	Pairing
Successfully paired	TUNAI R.A.E. is paired
Connected	TUNAI R.A.E. is connected
Disconnected	TUNAI R.A.E. is disconnected
Entering transparency mode	Transparency on
Exiting transparency mode	Transparency off
Battery level < 25%	Low battery
Battery low powering off	Low battery powering off
Soundscape switch	Voice prompt will speakout the corresponding soundscape

Diagram 4. Voice prompt

4. Getting Started with R.A.E.

4.1 Switching R.A.E. on and off

Switching On

Press and hold the Power button for 2 seconds until the LED starts to blink in blue, and you will hear power on from the voice prompt.

Switching Off

Press and hold the Power button for 5 seconds until the LED goes off, and you will head power off from the voice prompt.

4.2 Pairing

R.A.E. is designed to stream media wirelessly from Bluetooth audio devices, such as smartphones, tablets or personal computers. To do so, the headphone and device (source) must first be paired.

1. The first time you switch on R.A.E., Bluetooth pairing mode will be enabled automatically and the indicator will blink in blue and red sequentially.

If pairing mode is not enabled or to force entering pairing mode manually, press and hold the power button for 5 seconds when R.A.E. is powered off until the status indicator blinks in blue and red sequentially and you head pairing from the voice prompt.

2. Ensure the Bluetooth feature is enabled on the audio device, R.A.E. will appear in the discovery list, select to pair.
3. The indicator will blink in blue slowly when pairing is successful, and you will head TUNAI R.A.E. is paired as a voice prompt.

R.A.E. will remember up to eight paired Bluetooth devices.

Note: R.A.E. will automatically exit Bluetooth pairing mode if no device is paired within 5 minutes. If pairing fails, the indicator will rapid blink in blue, please try pairing again.

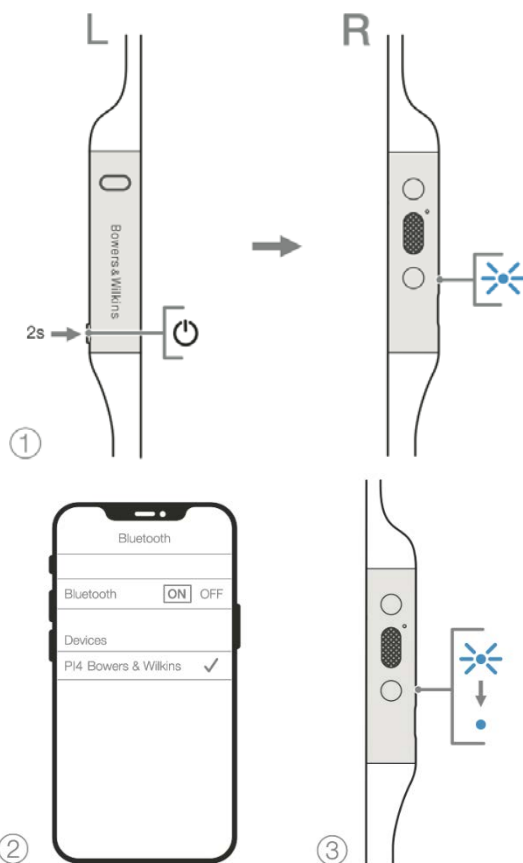


Diagram 6
Bluetooth pairing

Diagram 5. Bluetooth pairing

4.3 Switching between soundscapes

R.A.E. can store 4 different sets of soundscape preferences on the headphone, and quickly switch in-between through the soundscape switch button on the rear side of the control box (See diagram 1 for the button location). Three different soundscapes (balance, bass boost, and clarity) are predefined into the hardware to fit various genres types. An additional customize mode allows you to define personal sound taste through TUNAI Connection iOS and Android app for free.

Function	Action	Voice Prompt
Switch between soundscape in sequence	Press the soundscape switch button once.	Voice prompt will speak out the corresponding soundscape mode

Diagram 6.Soundscape switch control

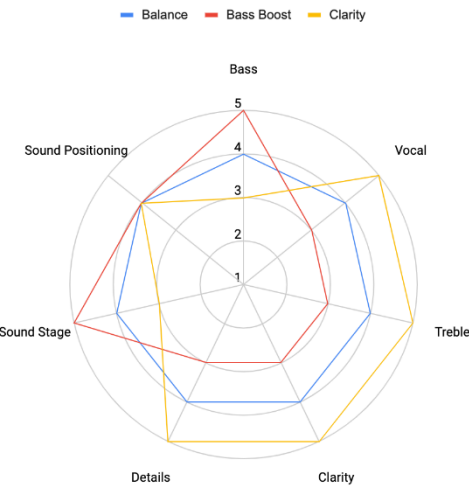


Diagram 7.Sound performance between different soundscapes

4.4 Transparency mode

R.A.E. features transparency mode which lets external noise from the surrounding environment, such as safety announcements or conversations, to be heard without taking the headphones off.

The soundscape switch button(See diagram 1 for the button location) also controls this feature.

Function	Action	Voice Prompt
Enable transparency mode	Press and hold the soundscape switch button for 2 seconds.	Enabling transparency mode
Disable transparency mode	Press and hold the soundscape switch button for 2 seconds.	Disabling transparency mode

Diagram 8. Transparency mode control

The level of external environment sound can be further customised to suit your needs using TUNAI Connection app.

4.5 Adding music to KKBOX playlist

R.A.E. has worked with KKBOX, the Taiwan leading music online streaming service, making it possible to add the music playing to the default playlist through a quick press on the power button.

Function	Action	Voice Prompt
Adding current song on KKBOX to playlist	Press the power button once.	Added to collected songs

Diagram 9. Adding music to KKBOX playlist

To enable this feature, you will need an additional BLE connection between R.A.E. and your smartphone.

Establishing BLE connection

1. Install the TUNAI Connection app to your iOS or Android smartphone.
2. Switch on TUNAI R.A.E. headphones.
3. Launch the TUNAI Connection app, click on “New Device” and choose TUNAI R.A.E.
4. Wait for a few seconds and the app connects with TUNAI R.A.E. directly.

5. Battery Charging

R.A.E. comes with a battery partially charged and may be used immediately. For best practice, we recommend to fully charge the headphone before first use. Please allow up to **2 hours** for full charge. The headphone can be used while charging.

To charge

1. Please use the supplied charging cable and connect the USB-A plug to a wall charger, power bank or a powered computer USB-A socket.
2. Connect the USB Micro end to the headphones USB Micro jack

Note : During charging, the headphone indicator will show solid red. When fully charged, the indicator will go off. See diagram 3 for indicator details.

6. Wearing your headphones

FCC Disclaimer

Federal Communication Commission Interference Statement

The Federal Communication Commission Radio Frequency Interference Statements includes the following paragraph:

This equipment has been tested and found to comply with the limits for a Class B digital device, pursuant to Part 15 of the FCC Rules. These limits are designed to provide reasonable protection against harmful interference in a residential installation. This equipment generates, uses and can radiate radio frequency energy and, if not installed and used in accordance with the instructions, may cause harmful interference to radio communications. However, there is no guarantee that interference will not occur in a particular installation. If this equipment does cause harmful interference to radio or television reception, which can be determined by turning the equipment off and on, the user is encouraged to try to correct the interference by one or more of the following measures:

- Reorient or relocate the receiving antenna.
- Increase the separation between the equipment and receiver.
- Connect the equipment into an outlet on a circuit different from that to which the receiver is connected.
- Consult the dealer or an experienced radio/TV technician for help.

FCC Caution : Any changes or modifications not expressly approved by the party responsible for compliance could void the user's authority to operate this equipment. This device complies with Part 15 of the FCC Rules. Operation is subject to the following two conditions : (1) This device may not cause harmful interference, and (2) this device must accept any interference received, including interference that may cause undesired operation.

This device and its antenna(s) must not be co-located or operating in conjunction with any other antenna or transmitter.

Portable Device

Federal Communications Commission (FCC) Radiation Exposure Statement

This equipment complies with FCC radiation exposure limits set forth for an uncontrolled environment . End use must follow the specific operating instructions for satisfying RF exposure compliance.

The user should not modify or change this equipment without written approval from TUNAI CREATIVE INC. Modification could void authority to use this equipment.

CE Statement

This product is compliant with the CE directive.