

## 1.5 User Manual



### Manual

For a complete set of information on how to get set up with your Kapture, please visit our help center:

[Help Center](#)

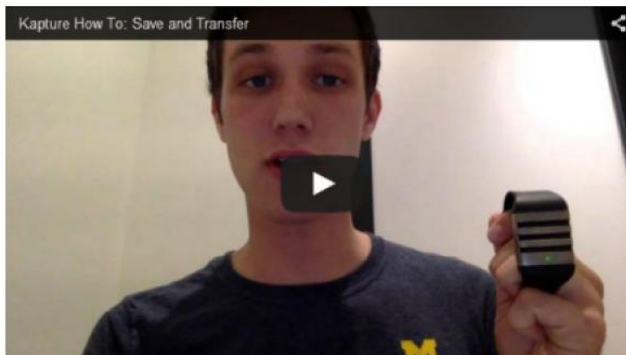
#### Initial Pairing

In order to transfer audio files from your device to your phone, you need to complete a one-time Bluetooth pairing process. First, ensure that your phone's Bluetooth is turned on. Next begin discovering nearby Bluetooth devices - if you're using an iPhone this will occur automatically while you are looking at the Bluetooth settings page. While your phone is looking for devices, connect your Kapture to its charger to activate its pairing mode. The device will vibrate one time when it has rebooted then immediately transition to pair mode. Once the pairing mode is activated, the device will vibrate one more time and the LED will begin slowly pulsing yellow. At this point your Kapture will appear as an available device within your phone's Bluetooth settings. Simply select Kapture within your phone settings and you will feel the device vibrate one time indicating it has connected successfully. Once connected, the device will transfer any and all backlogged files, then disconnect from your phone, turn its Bluetooth off to save power, and begin recording again. While recording, the LED will blink green every seven seconds.



#### Saving and Transferring

When you want to save a klip and send it to your phone, firmly tap the device twice. The device will vibrate two times, acknowledging it has received that many taps, and the LED will turn solid green. Once the klip is saved locally, the LED will turn solid yellow and the device will turn its Bluetooth back on and attempt to reconnect with your phone. If the connection fails, the device will vibrate three times. If the connection succeeds, the device will vibrate once. After that first vibration, the device will vibrate one time for every successful file transfer and three times for any failed file transfers. Once all files are transferred, the device vibrates two times then disconnects from your phone, turns its Bluetooth off to save power, and begins recording again. While recording, the LED will blink green every seven seconds.



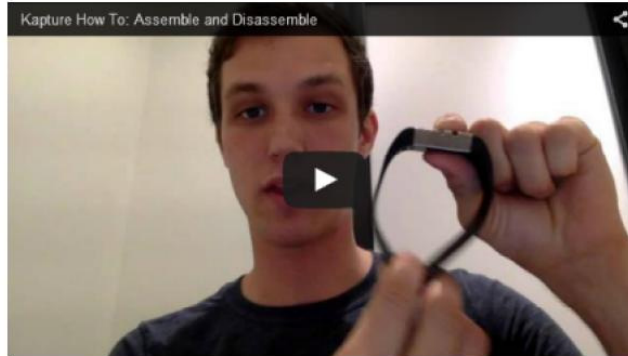
#### Charging

To connect the device to the charger, first grab the hard end of the charger that has two small metal connectors and two plastic-covered magnets. These connectors and magnets line up with corresponding connectors and magnets on the back of the Kapture device itself. Simply place these adjacent to each other and you will be able to feel the magnets pull the connectors together. Once the magnetic connection is secure and the other end of the charger is connected to a USB power source such as your computer or a wall adapter, the device will reboot and begin charging. This reboot begins with the LED alternating green and red, then is followed by a red to yellow to green color sequence before finally ending with a single vibration, indicating the device has fully rebooted. Once this is complete, the device will enter the pairing mode described above. Once the pairing is complete or 60 seconds have passed, the device will enter its normal charging mode and its LED will be slowly pulsing red. To charge faster, the device does not record audio while charging.



#### Assemble & Disassemble

While your Kapture should arrive assembled, you can disassemble your device to change out the bands and grill for alternate colors or to the klip-on accessory. To disassemble the Kapture wristband, first grab the soft bands where they attach to the hard main body of the device. Pull these upward and away from the tail ends of the bands where they clasp together. Then easily slide the grill off towards where you had removed the band closest to the charging connectors.



[v0.20 Usage Instructions](#)

[v0.20 LED & Vibrate Bulleted Descriptions](#)

FCC Compliance Statement:

This device complies with Part 15 of the FCC Rules. Operation is subject to the following two conditions: (1) this device may not cause harmful interference, and (2) this device must accept any interference received, including interference that may cause undesired operation.

Changes or modifications not expressly approved by the party responsible for compliance could void the user's authority to operate the equipment.

NOTE: This equipment has been tested and found to comply with the limits for a Class B digital device, pursuant to Part 15 of the FCC Rules. These limits are designed to provide reasonable protection against harmful interference in a residential installation. This equipment generates, uses and can radiate radio frequency energy and, if not installed and used in accordance with the instructions, maybe cause harmful interference to radio communications. However, there is no guarantee that interference will not occur in a particular installation. If this equipment does cause harmful interference to radio or television reception, which can be determined by turning the equipment off

and on, the user is encouraged to try to correct the interference by one or more of the following measures:

- Reorient or relocate the receiving antenna.
- Increase the separation between the equipment and receiver.
- Connect the equipment into an outlet on a circuit different from that to which the receiver is connected.
- Consult the dealer or an experienced radio/TV technician for help.

Subscribe to email updates...

your email address...

Join

Connect with us...



Contact us...

[info@kaptureaudio.com](mailto:info@kaptureaudio.com)

[FAQs](#) [Shipping & Returns](#) [Shop Accessories](#) [Help Center](#)

© 2015 Kapture. All Rights Reserved.