

Appendix A

System Check 750 MHz Head
System Check 835 MHz Head
System Check 1750 MHz Head
System Check 1900 MHz Head

Summary

Dipole	Frequency [MHz]	TSL	Power [dBm]	Dev. 1g [%]	Dev. 10g [%]	Dev. Peak [%]	Iso. Error [%]
D750V3 – SN1231	750.0	HSL	20.0	3.0	4.5	15.9	5.2

Exposure Conditions

Phantom Section, TSL	Test Distance [mm]	Band	Group, UID	Frequency [MHz], Channel Number	Conversion Factor	TSL Conductivity [S/m]	TSL Permittivity
Flat, HSL	15		CW, 0--	750.000, 0	9.65	0.891	42.4

Hardware Setup

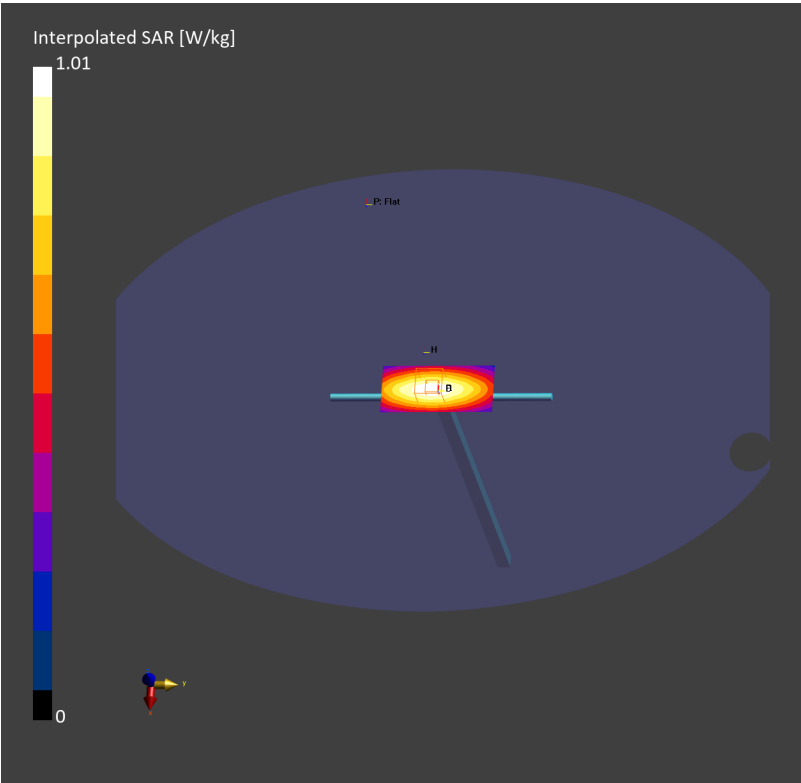
Phantom	TSL	Probe, Calibration Date	DAE, Calibration Date
ELI V8.0 (20deg probe tilt) – 2227	HSL750	EX3DV4 – SN7812, 2024-06-25	DAE4ip Sn1847, 2024-12-31

Scans Setup

	Area Scan	Zoom Scan
Grid Extents [mm]	40.0 x 90.0	32.0 x 32.0 x 30.0
Grid Steps [mm]	10.0 x 15.0	6.0 x 6.0 x 1.5
Sensor Surface [mm]	3.0	1.4
Graded Grid	N/A	Yes
Grading Ratio	N/A	1.5
MAIA	N/A	N/A
Surface Detection	All points	All points
Scan Method	Measured	Measured

Measurement Results

	Area Scan	Zoom Scan
Date	2025-06-02, 04:56	2025-06-02, 05:06
psSAR1g [W/Kg]	0.875	0.889
psSAR10g [W/Kg]	0.584	0.591
Power Drift [dB]	0.01	0.00
Power Scaling	Disabled	Disabled
Scaling Factor [dB]		
TSL Correction	No correction	No correction



Summary

Dipole	Frequency [MHz]	TSL	Power [dBm]	Dev. 1g [%]	Dev. 10g [%]	Dev. Peak [%]	Iso. Error [%]
D835V2 – SN4d302	835.0	HSL	20.0	–1.2	–1.2	15.8	2.1

Exposure Conditions

Phantom Section, TSL	Test Distance [mm]	Band	Group, UID	Frequency [MHz], Channel Number	Conversion Factor	TSL Conductivity [S/m]	TSL Permittivity
Flat, HSL	15		CW, 0--	835.000, 0	9.52	0.900	42.1

Hardware Setup

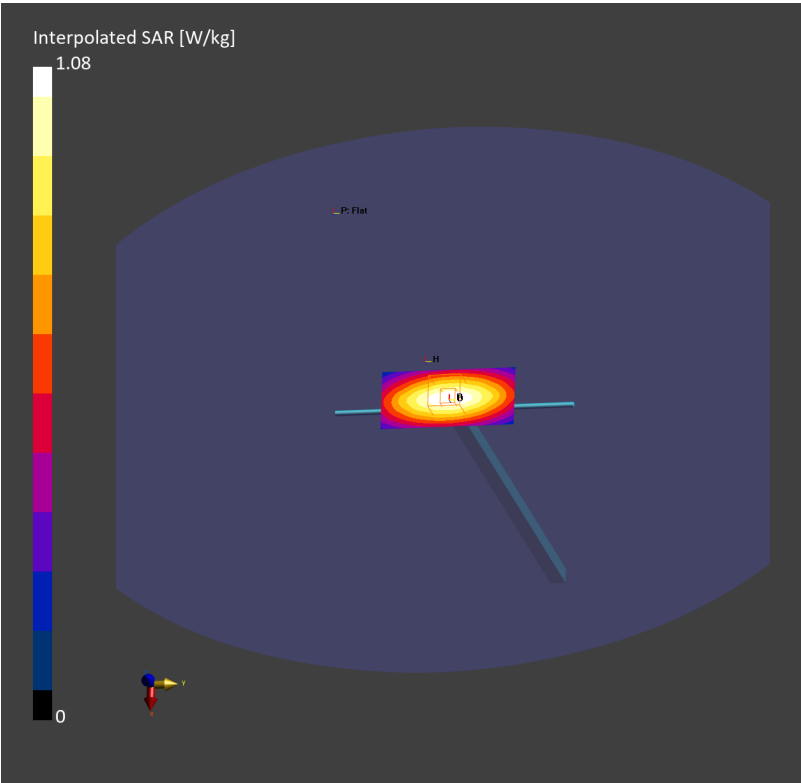
Phantom	TSL	Probe, Calibration Date	DAE, Calibration Date
ELI V8.0 (20deg probe tilt) – 2227	HSL835	EX3DV4 – SN7858, 2025–01–15	DAE4ip Sn1847, 2024–12–31

Scans Setup

	Area Scan	Zoom Scan
Grid Extents [mm]	40.0 x 90.0	32.0 x 32.0 x 30.0
Grid Steps [mm]	10.0 x 15.0	6.0 x 6.0 x 1.5
Sensor Surface [mm]	3.0	1.4
Graded Grid	N/A	Yes
Grading Ratio	N/A	1.5
MAIA	N/A	N/A
Surface Detection	VMS + 6p	VMS + 6p
Scan Method	Measured	Measured

Measurement Results

	Area Scan	Zoom Scan
Date	2025–06–01, 09:42	2025–06–01, 09:49
psSAR1g [W/Kg]	0.937	0.956
psSAR10g [W/Kg]	0.617	0.624
Power Drift [dB]	–0.00	–0.00
Power Scaling	Disabled	Disabled
Scaling Factor [dB]		
TSL Correction	No correction	No correction



Test Laboratory: TOWE Lab

System Performance Check Report

Summary

Dipole	Frequency [MHz]	TSL	Power [dBm]	Dev. 1g [%]	Dev. 10g [%]	Dev. Peak [%]	Iso. Error [%]
D1750V2 – SN1115	1750.0	HSL	20.0	−0.7	0.7	6.8	2.1

Exposure Conditions

Phantom Section, TSL	Test Distance [mm]	Band	Group, UID	Frequency [MHz], Channel Number	Conversion Factor	TSL Conductivity [S/m]	TSL Permittivity
Flat, HSL	10		CW, 0--	1750.000, 0	8.09	1.37	40.2

Hardware Setup

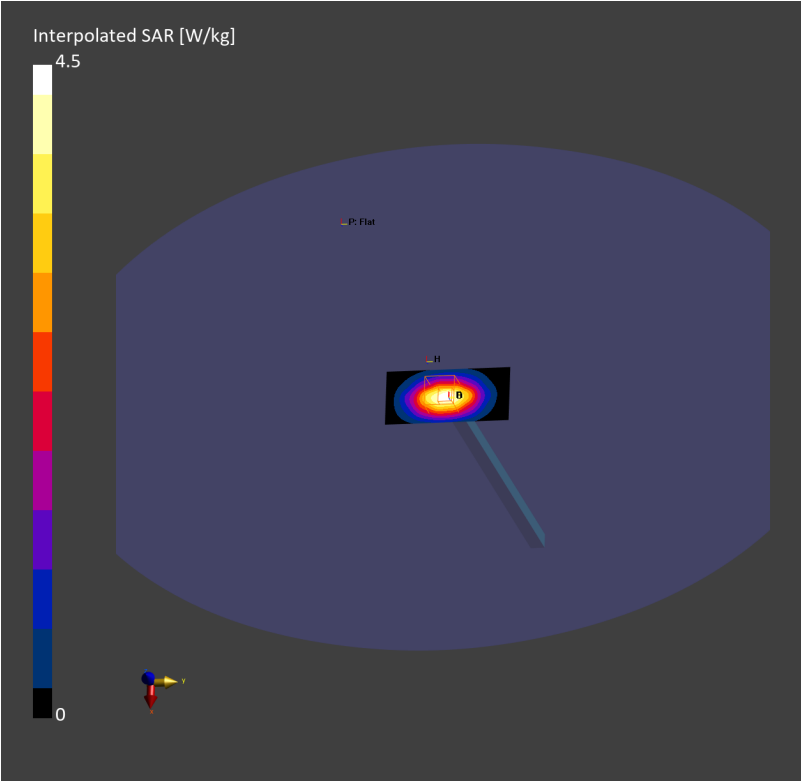
Phantom	TSL	Probe, Calibration Date	DAE, Calibration Date
ELI V8.0 (20deg probe tilt) – 2227	HSL1750	EX3DV4 – SN7858, 2025-01-15	DAE4ip Sn1847, 2024-12-31

Scans Setup

	Area Scan	Zoom Scan
Grid Extents [mm]	40.0 x 90.0	32.0 x 32.0 x 30.0
Grid Steps [mm]	10.0 x 15.0	6.0 x 6.0 x 1.5
Sensor Surface [mm]	3.0	1.4
Graded Grid	N/A	Yes
Grading Ratio	N/A	1.5
MAIA	N/A	N/A
Surface Detection	VMS + 6p	VMS + 6p
Scan Method	Measured	Measured

Measurement Results

	Area Scan	Zoom Scan
Date	2025-06-01, 12:26	2025-06-01, 12:33
psSAR1g [W/Kg]	3.62	3.66
psSAR10g [W/Kg]	1.94	1.96
Power Drift [dB]	0.01	−0.00
Power Scaling	Disabled	Disabled
Scaling Factor [dB]		
TSL Correction	No correction	No correction



Summary

Dipole	Frequency [MHz]	TSL	Power [dBm]	Dev. 1g [%]	Dev. 10g [%]	Dev. Peak [%]	Iso. Error [%]
D1900V2 – SN512	1900.0	HSL	20.0	3.2	3.5	8.7	–2.2

Exposure Conditions

Phantom Section, TSL	Test Distance [mm]	Band	Group, UID	Frequency [MHz], Channel Number	Conversion Factor	TSL Conductivity [S/m]	TSL Permittivity
Flat, HSL	10		CW, 0--	1900.000, 0	7.79	1.38	39.9

Hardware Setup

Phantom	TSL	Probe, Calibration Date	DAE, Calibration Date
ELI V8.0 (20deg probe tilt) – 2227	HSL1900	EX3DV4 – SN7858, 2025–01–15	DAE4ip Sn1847, 2024–12–31

Scans Setup

	Area Scan	Zoom Scan
Grid Extents [mm]	40.0 x 90.0	32.0 x 32.0 x 30.0
Grid Steps [mm]	10.0 x 15.0	6.0 x 6.0 x 1.5
Sensor Surface [mm]	3.0	1.4
Graded Grid	N/A	Yes
Grading Ratio	N/A	1.5
MAIA	N/A	N/A
Surface Detection	VMS + 6p	VMS + 6p
Scan Method	Measured	Measured

Measurement Results

	Area Scan	Zoom Scan
Date	2025–06–01, 15:09	2025–06–01, 15:15
psSAR1g [W/Kg]	4.00	4.03
psSAR10g [W/Kg]	2.06	2.11
Power Drift [dB]	–0.00	0.01
Power Scaling	Disabled	Disabled
Scaling Factor [dB]		
TSL Correction	No correction	No correction

