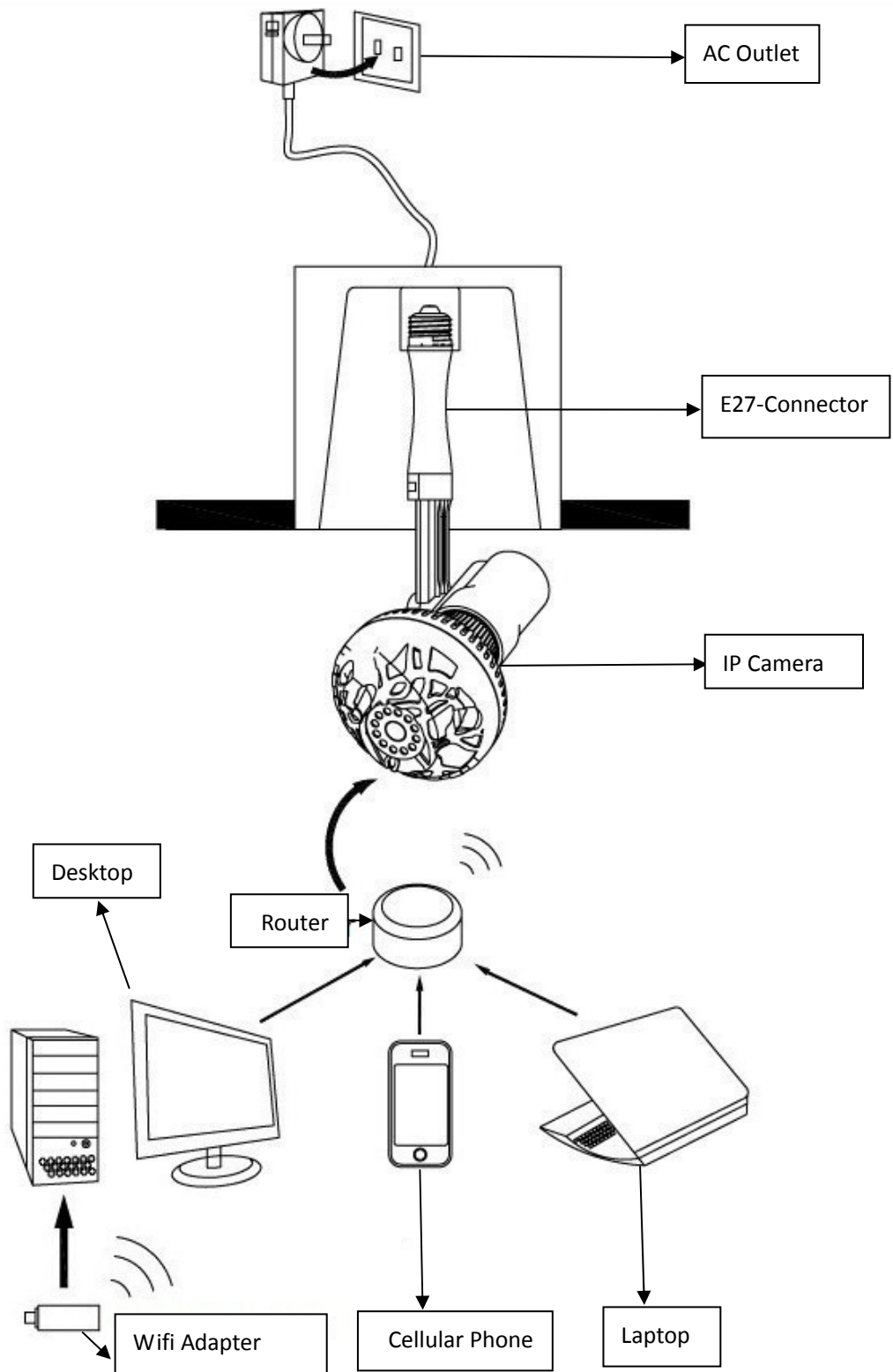
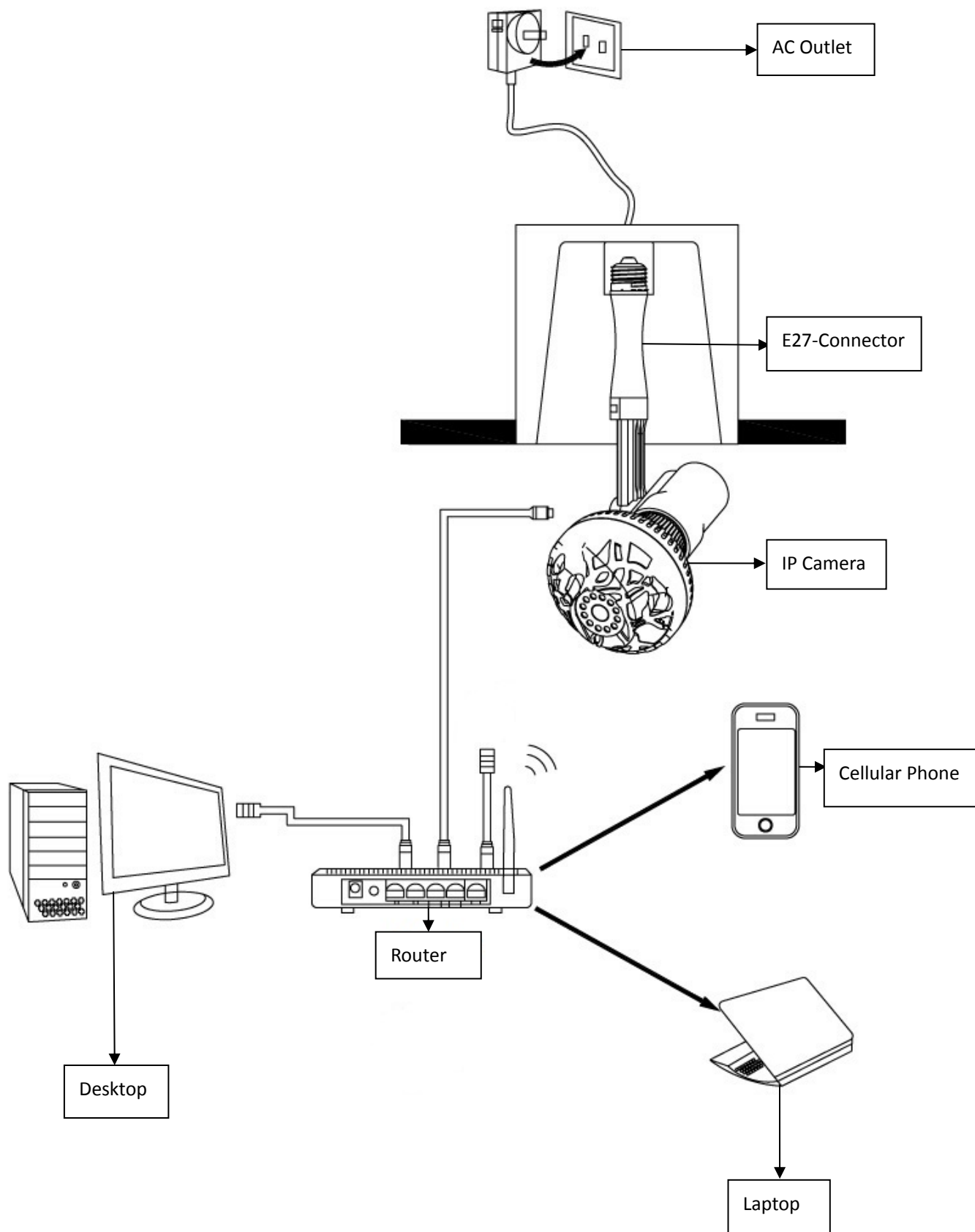


# IP Camera Manual

## Specification

<b>Product</b>	<b>WFC-1000</b>
<b>Imaging Device</b>	<b>1/4" OV9715 CMOS</b>
<b>Night Visual Range</b>	<b>10-20M with IR-CUT</b>
<b>Bit Rate</b>	<b>32Kbps~2Mbps</b>
<b>Video Resolution</b>	<b>1280*720    704*576    352*288    176*144</b>
<b>Image Compression</b>	<b>H.264</b>
<b>Intelligent Alarm</b>	<b>Motion detect, Video loss, Video blind ,Name and IP conflict</b>
<b>Basic Parameters</b>	<b>Reset, Anti jitter, Dual stream, Password protection, Watermark</b>
<b>Memory</b>	<b>Micro-SD Card (TF Card) and Network storage</b>
<b>WIFI</b>	<b>Support</b>
<b>TF Card</b>	<b>Support</b>
<b>Working Environment</b>	<b>-10℃~60℃, humidity 90% or less(non-condensing)</b>
<b>Power</b>	<b>90V~260V AC</b>
<b>Power Port</b>	<b>E27 Track (standard bulb socket)</b>

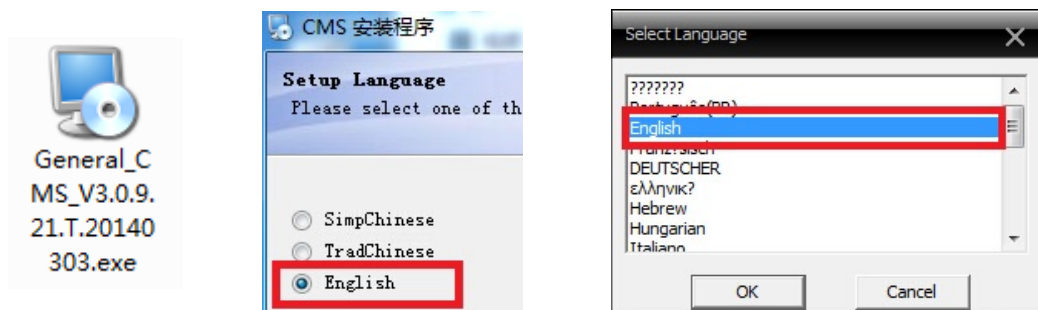




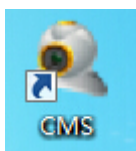
# Computer Mode

In this section you can set your IP camera to connect to your LAN and you can watch the video on your computer. Please use the attached network cable to connect the camera to your LAN. Wait at least 1 minute for camera to complete initialization.

## 1. Install CMS

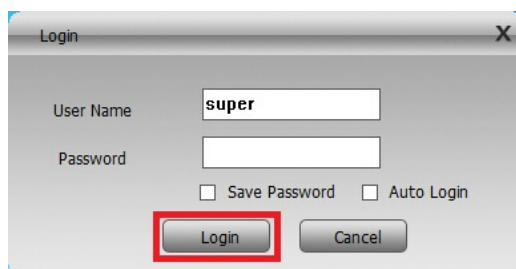


## 2. Start this application

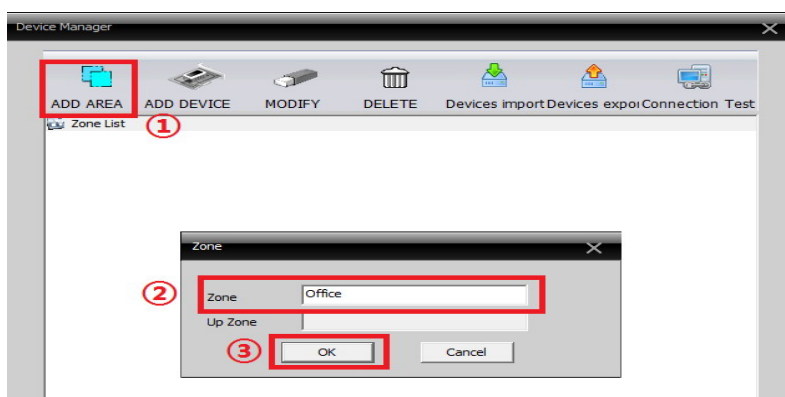
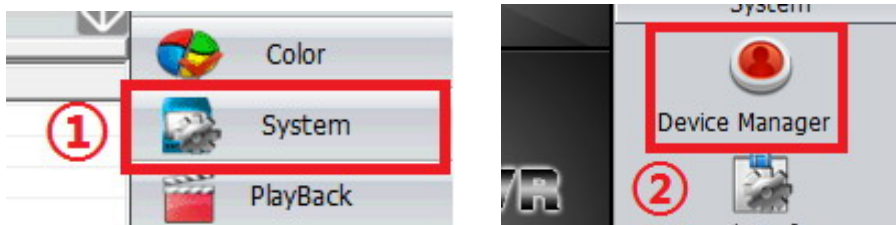


## 3. Login

[Default]  
User Name:super  
Password:



## 4. Go to Device Manager to add devices



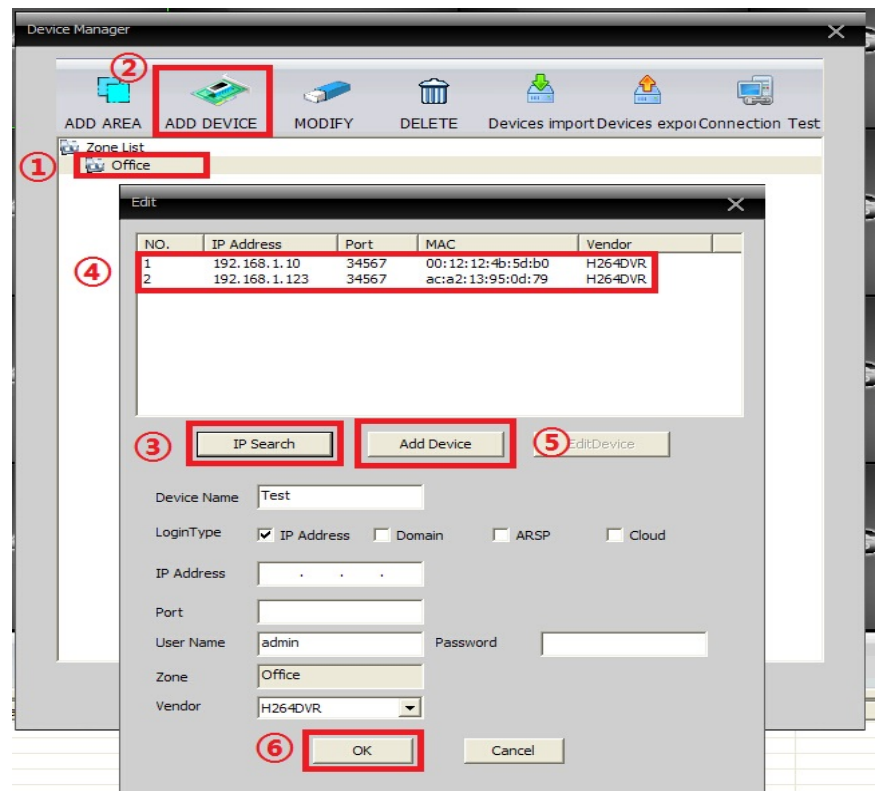
## 5. Create your area

**Note:** You can name your area.

## 6. Add device

**Note:** You should choose your area first and add your device in your area.

**Note:** Add each device one by one after searching.



## 7. Watch the video

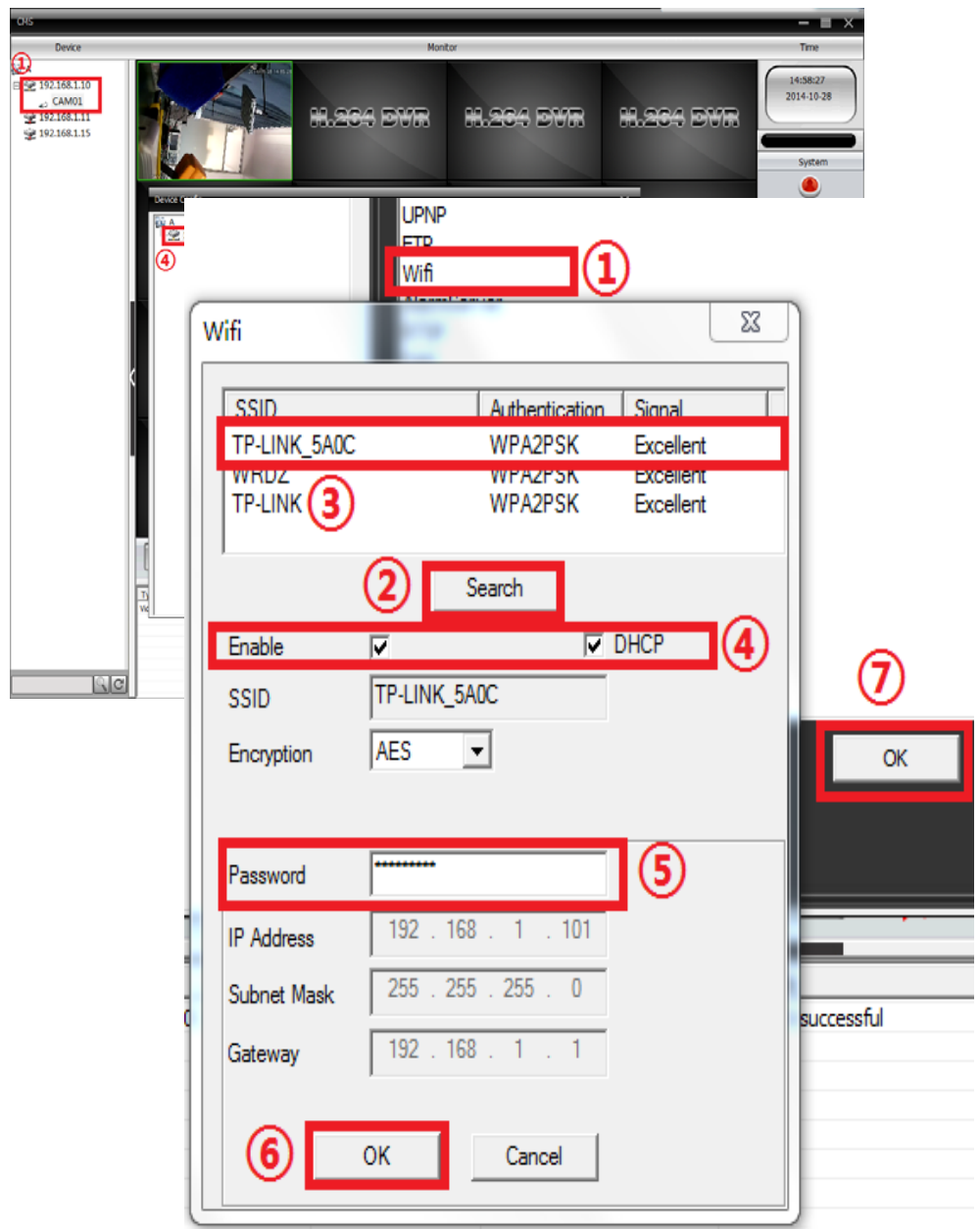
- Note:** ① Choose the area  
② Connect to the camera  
③ Watch the video



## Wireless Setting

In this section you can set your IP camera to connect to your LAN in wireless mode.

**Note:** If you cannot see the Setting interface, please repeat step① and step④.



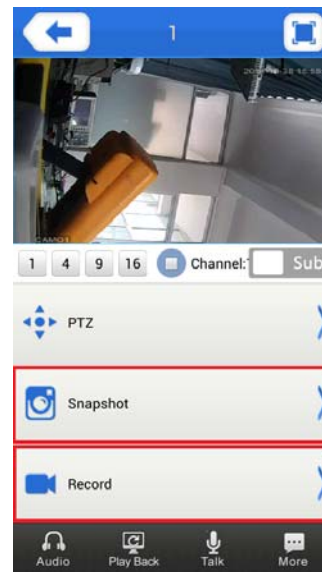
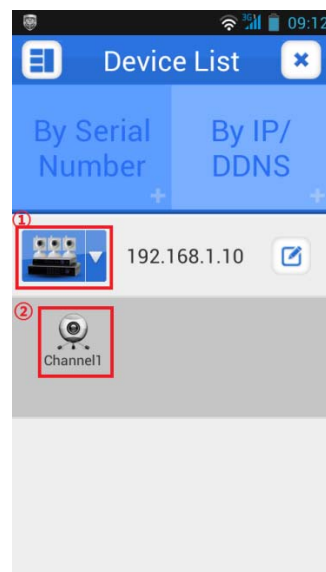
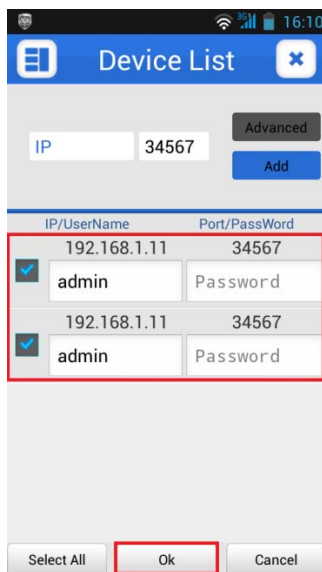
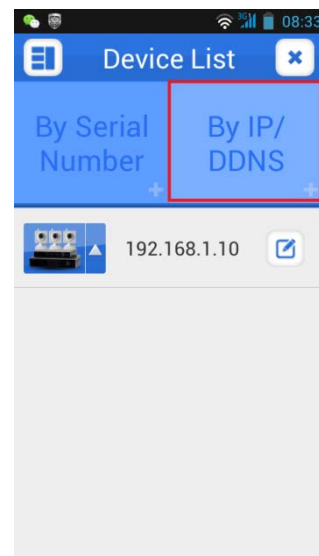
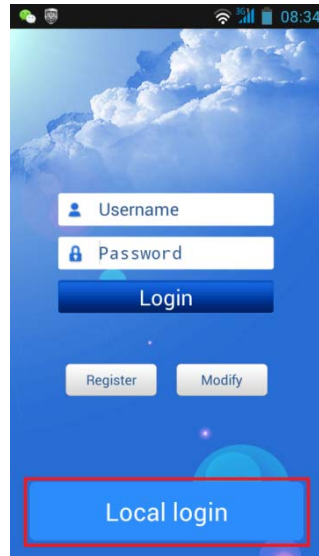
**Note:** After connecting the IP Camera to your Router, camera will request a restart. Please disconnect network cable and restart camera to allow the camera connect to you router in wireless.

**Note:** Cable connection will have priority over the wireless connection.

**Note:** If you want to set a static IP for your camera, you should disable DHCP first. Static IP is helpful to solve the disconnect problem.

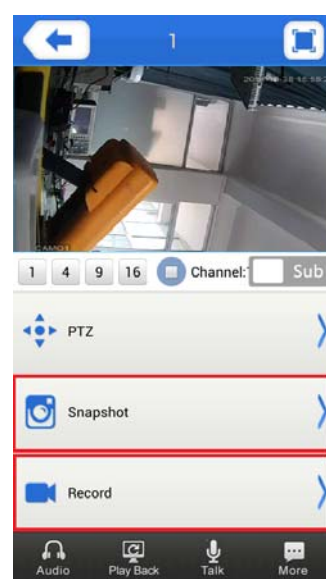
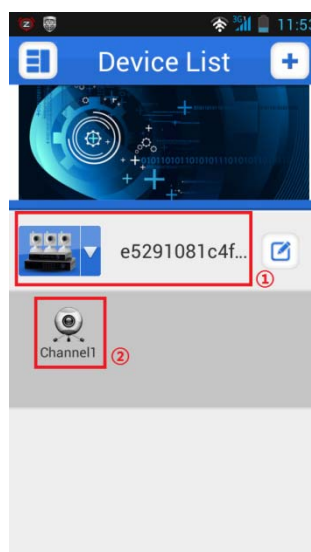
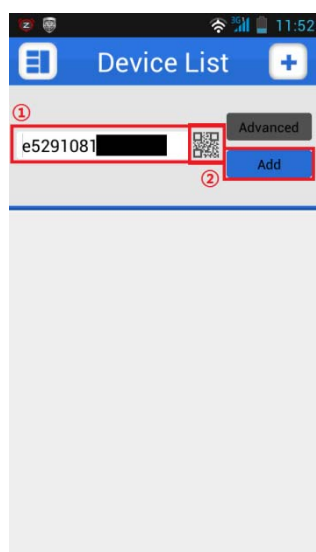
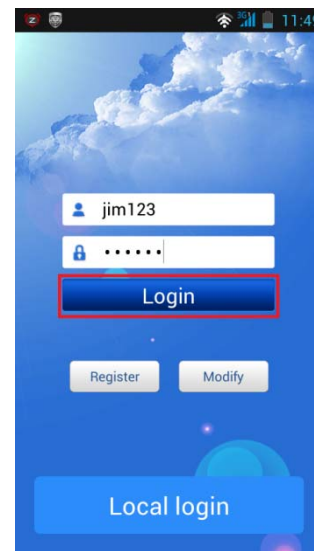
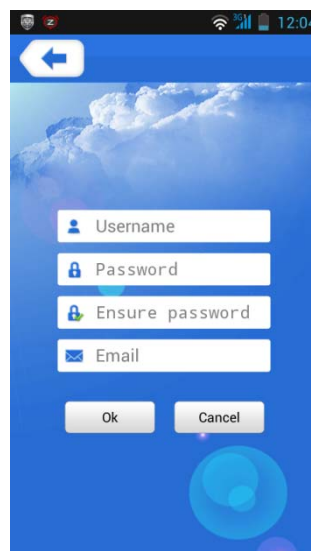
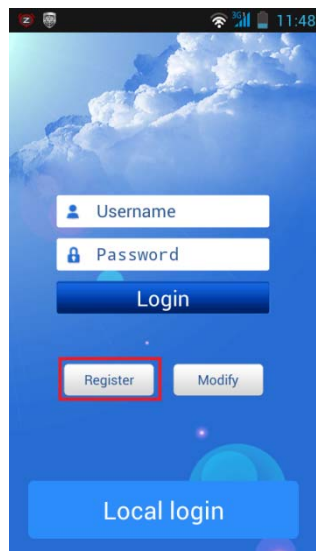
## Phone Local Mode

Before you use this software, please make sure the camera and your phone are in the same LAN.



## Phone Remote Mode





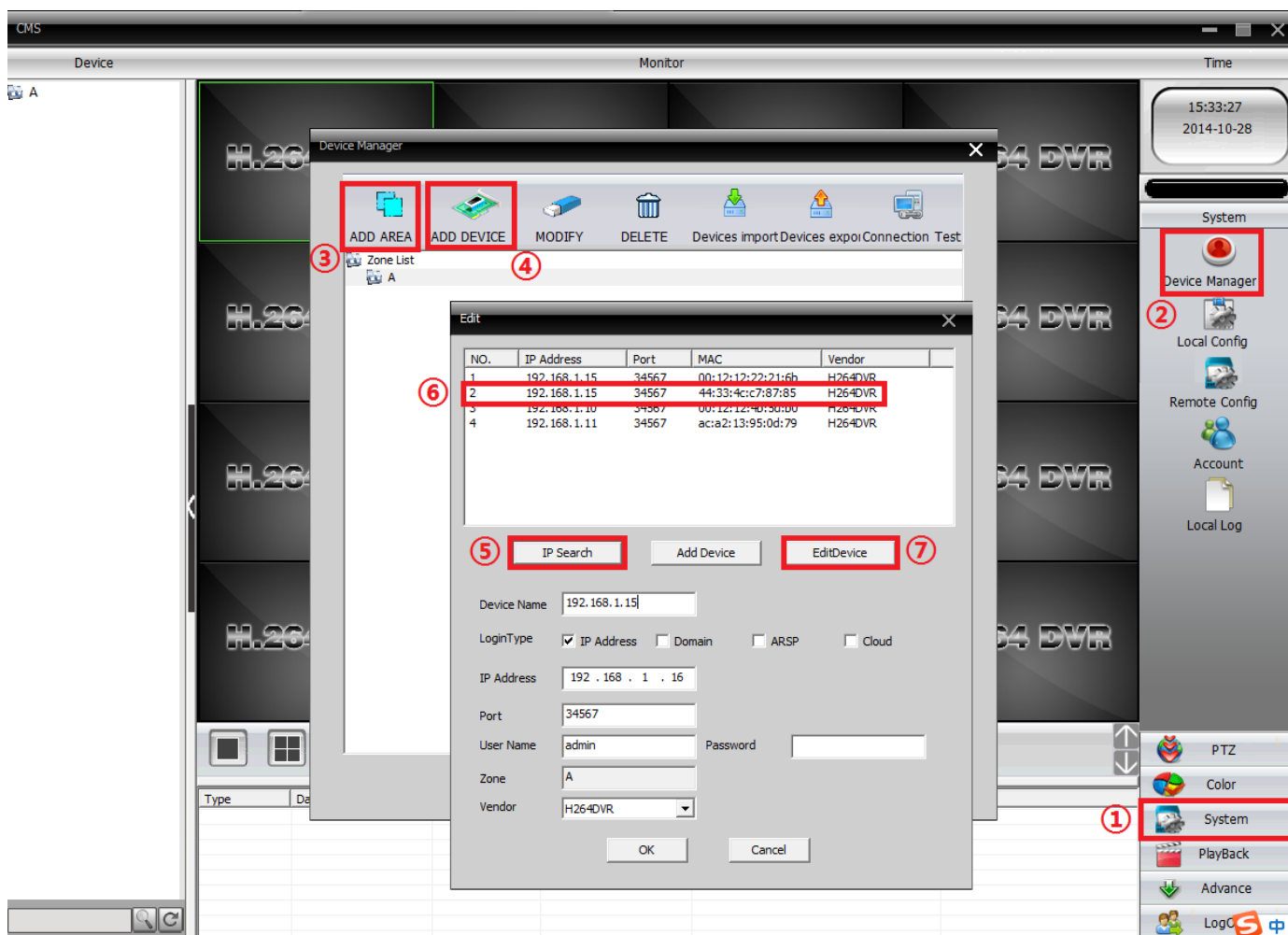
**Note:** You can scan for or input the device ID of your camera in this step.

# Multiple Cameras Setting

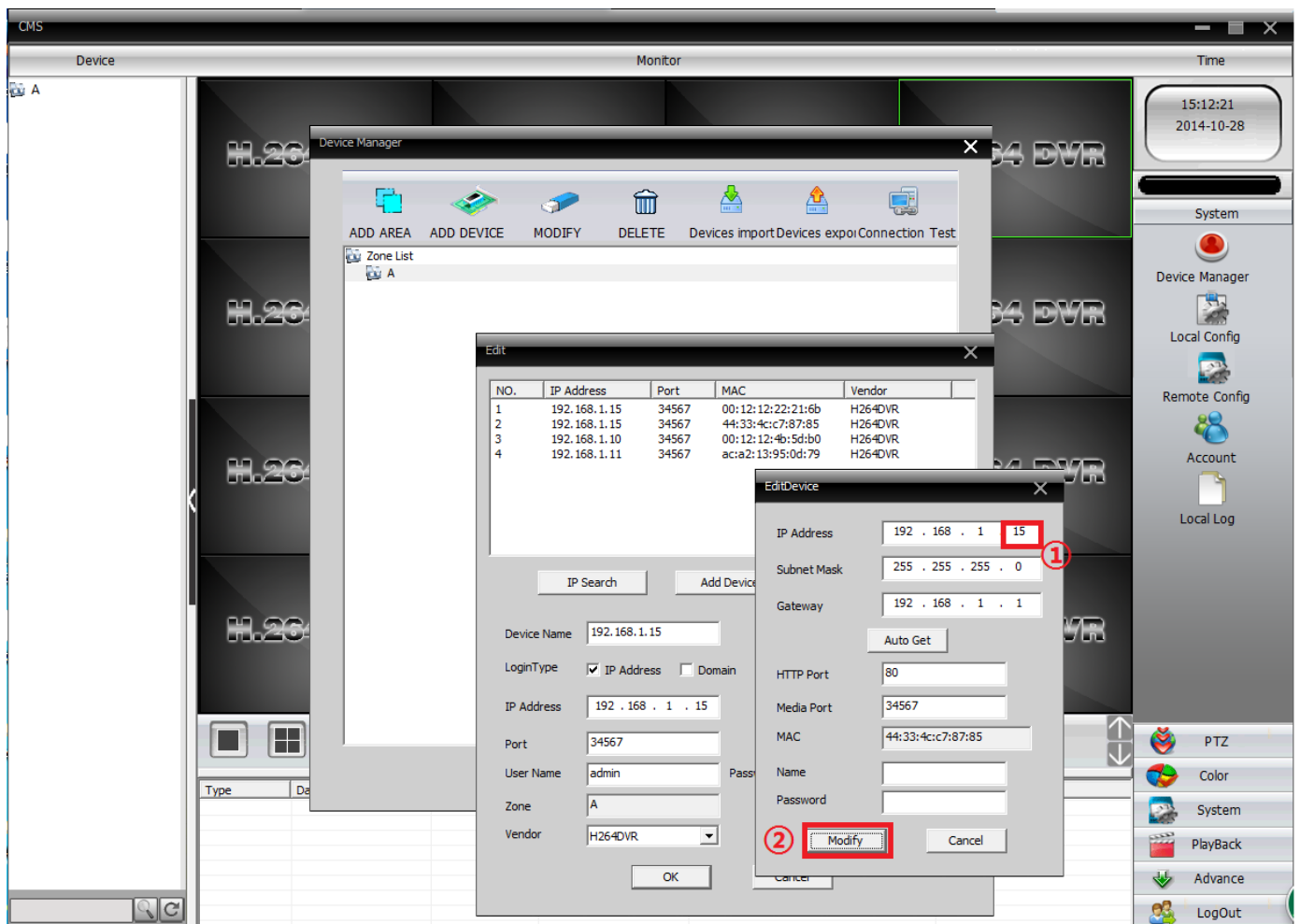
If you need to connect more than 4 cameras, please use the high performance router (commercial router), or it cannot ensure fluent video.

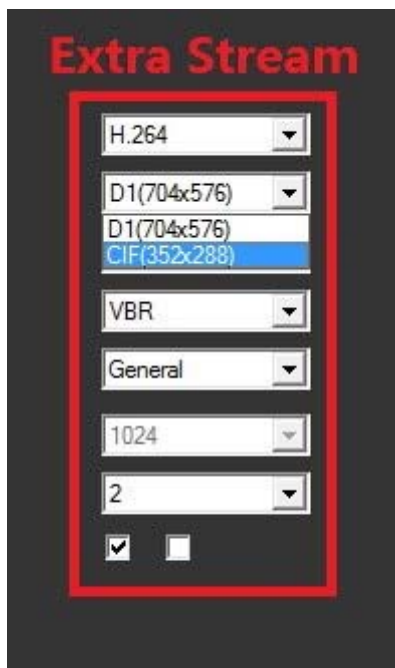
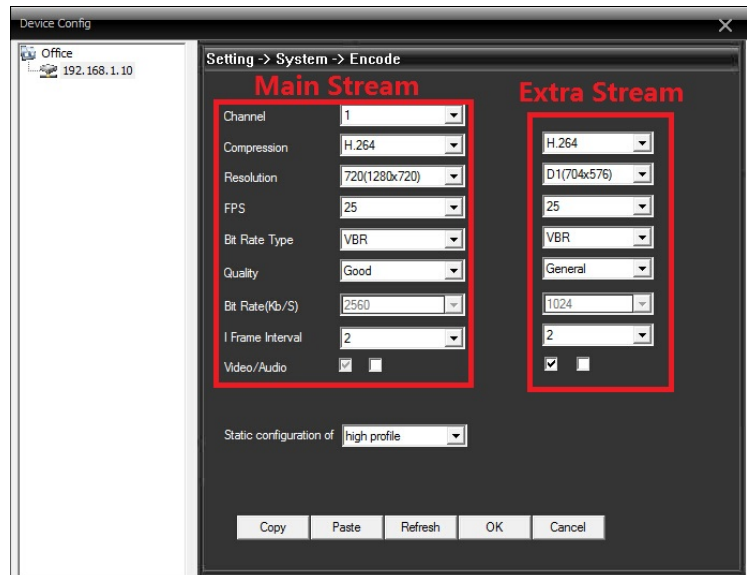
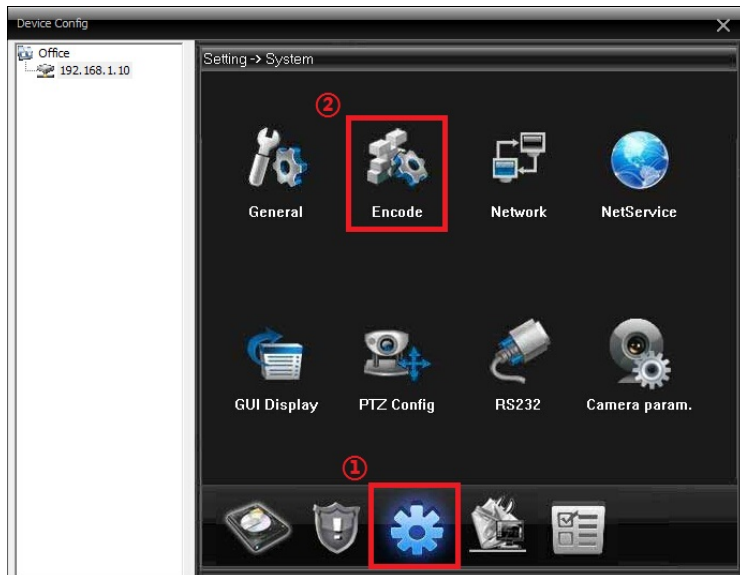
If you use normal home router, please make sure the distance between camera and router is less than 40ft (about 12m).

If you find your devices' IP address is the same as something else on your network, please do step⑦ to change the IP to avoid the IP conflict.

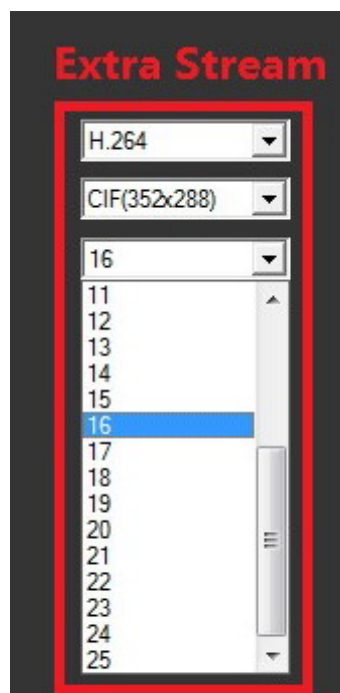


Please make sure the IP address is 192.168.1.2-255

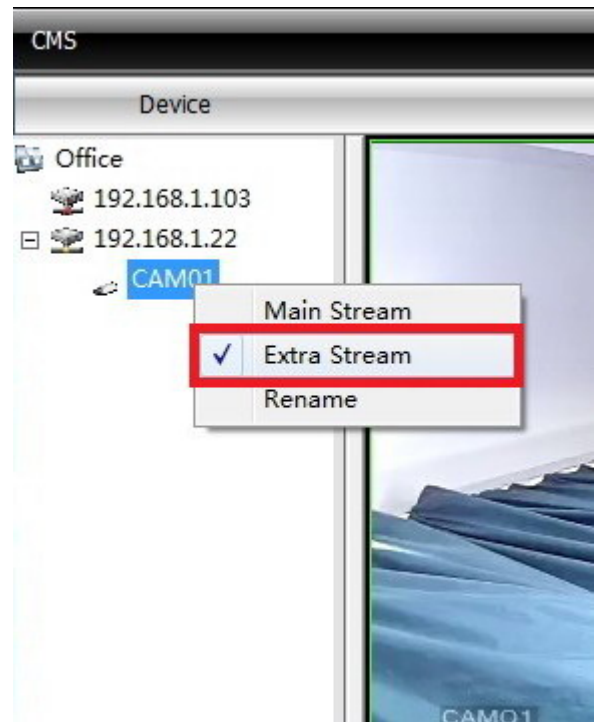




**Resolution**



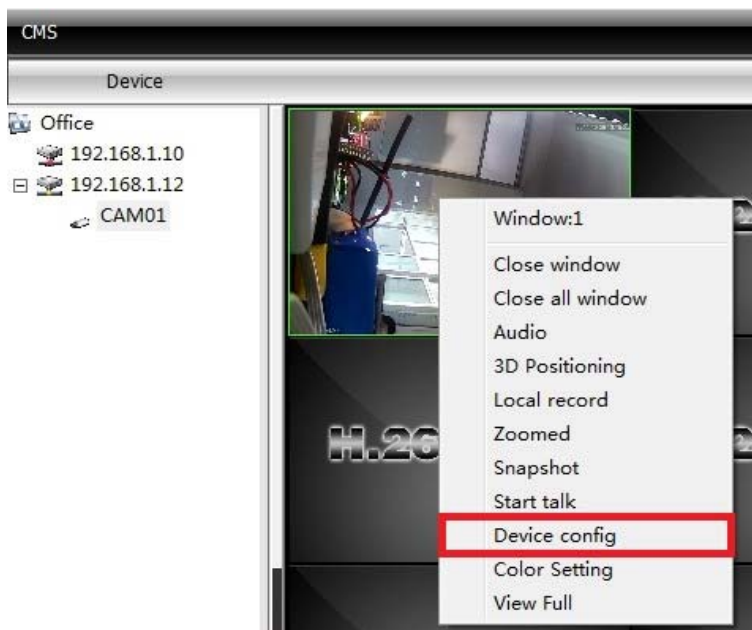
**FPS**



**Note:** If you have more than one camera on the same network and the video is not smooth, please set to the Extra Stream Resolution and FPS in low (about 16) and use the Extra Stream Mode.

# Remote Record Configuration

**Note:** Camera support standard TF card, video file size is about 1.5G/hour (1280\*720)  
After inserting the TF card, please start the video camera. Go to <Device config>  
-<Advanced>-<HDD Manage> format the TF card.  
After formatting, go to <Read/Write> and <snapshot>, change the TF card to write  
or read mode.



Go to <Device config>-<Record>-<Record>, config the record.

[Channel] Choose the corresponding channel number. Choose “ALL” to make all the channels with came configuration.

[Length] The time length of each video file can be set between 1min to 120 min, 60 minutes is default value.

[Redundancy] Choose the redundancy function to double backup the file.

[Record Control] Set video state: timing, manual or stop. Configure: Record according to the set video type (common, detection) and time section.

Manual: Corresponding channel starts recording 24 hours non-stop.

Stop: Whatever state the channel is in, the corresponding channel recording stops when stop button is selected.

[Period] Set the time section of common recording, the recording will start only among the set range.

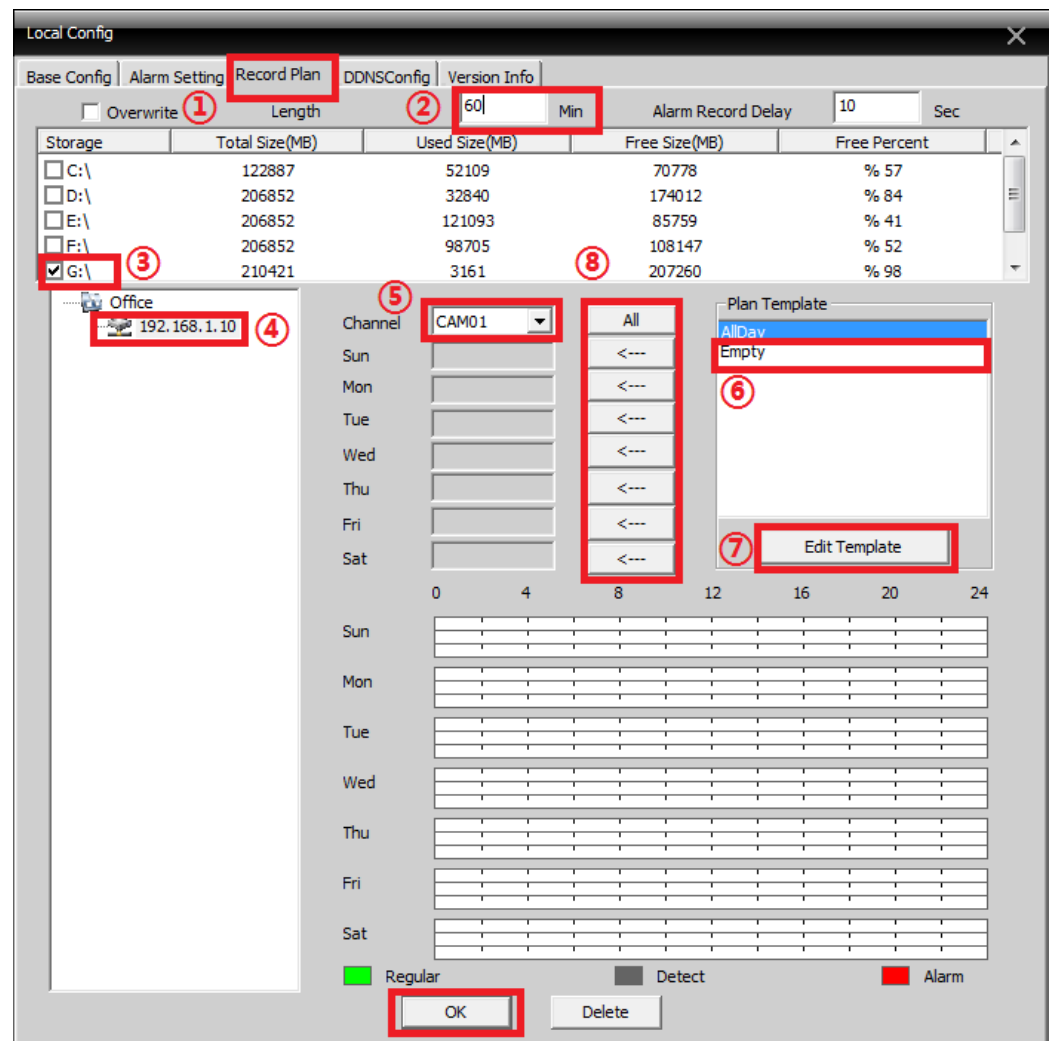
[Record type] Set recording type: Regular, Detect, Alarm.

Regular: Record according to the set time section. The video file is "R".

Detect: Within the set time section, trigger the motion detect, video blind, video loss or abnormal analysis. When above alarm is set as opening recording, the recording detection state is on. The video file type is M.

Alarm: When alarm happens, trigger alarm input, the recording detection state is on.

# Local Record Configuration

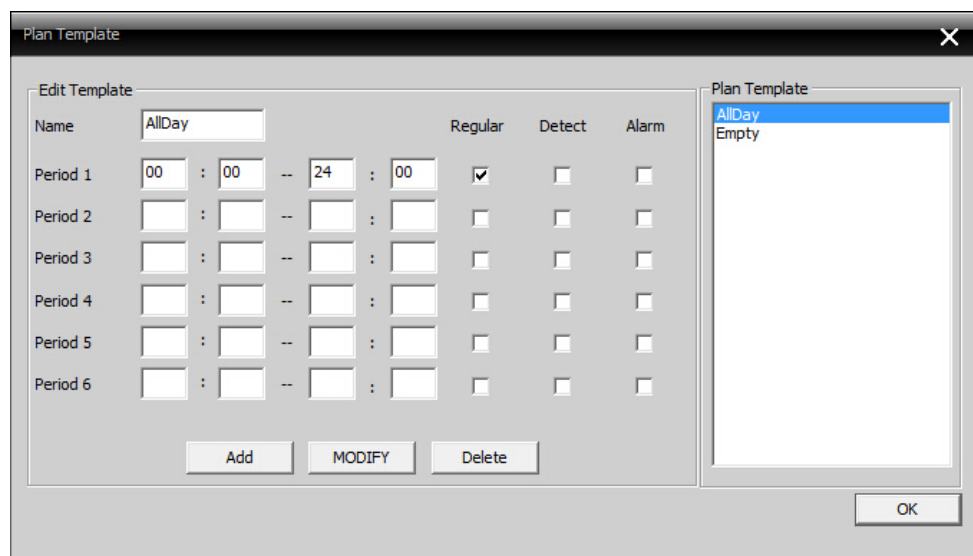


**Warning:** When this partition is full, the newer files will overwrite the oldest file, to save your files make sure to copy your files to another location.

**Note:** Step No.② means how many minutes per file.

Step No.③ select the location of video.

Step No.⑦ edit your recording plan.

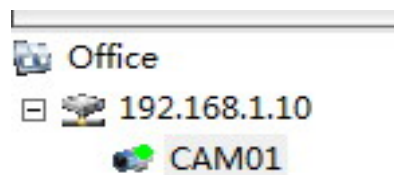


**Note:** [Regular] Camera will record the video in the period you set.

[Detect] Camera will only start to record when it detects motion.

[Alarm] This product does not support this function.

When you see this icon, the local recording has started.



**Note:** The location of video files are in this file under the disk you set.



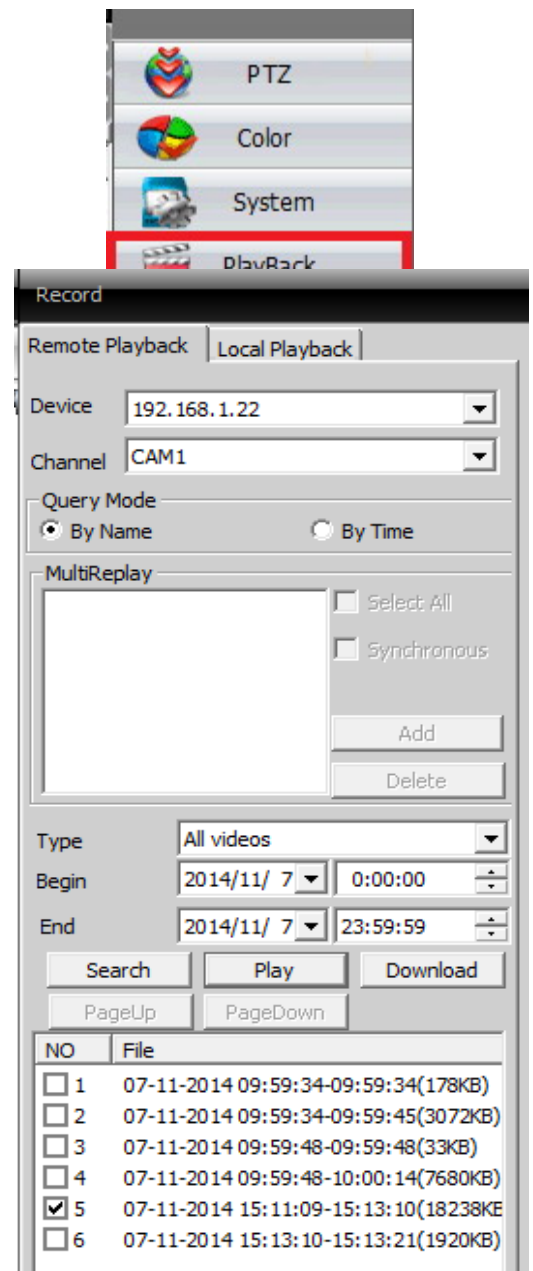


# Play Back

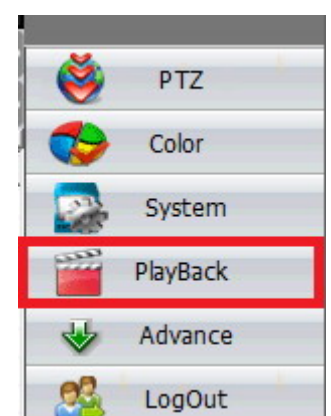
**Note:** If you want to play back the remote video in the camera, please insert the TF Card first.

**Note:** You should first choose your device and channel, click the Search button to search the videos.

You can choose the Remote Playback or Local Playback.  
You can also download the video to your computer.



# Video Extraction



## There are two ways to extract the remote video.

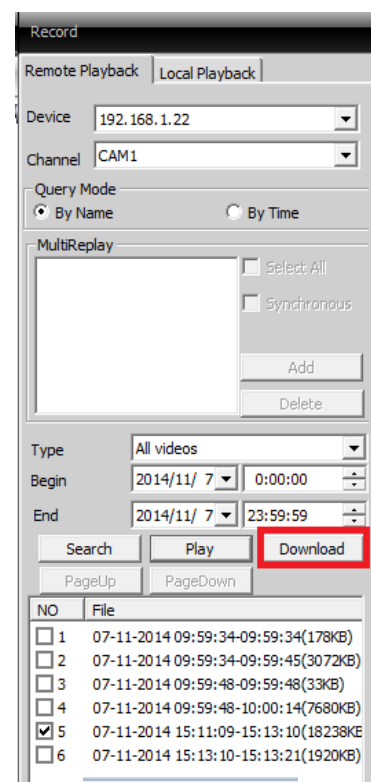
### 1. Remote download

**Note:** It will be slow to download the video in remote mode.

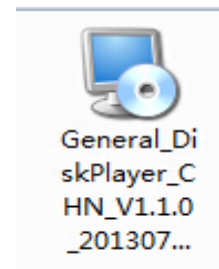
### 2. Download video from Memory Card (TF Card)

**Note:** You can remove the TF Card from the camera and insert into the TF Card reader which is then inserted into the computer to extract the video.

**Warning:** After you connect to your computer, it will request your device needs to be formatted before use. Please don't format it, or your video data will be lost.



\* You should first install the software DiskPlayer.



\* Start DiskPlayer.



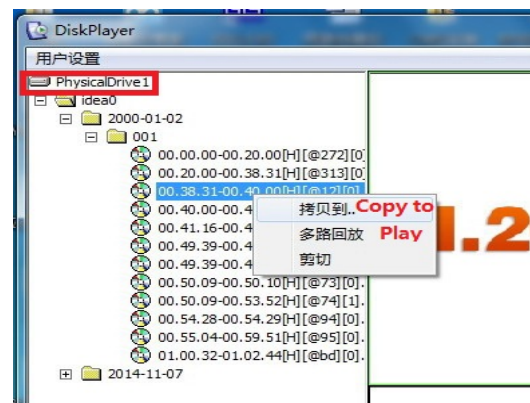
Before you download your video, you should first login.

[Default Name]:admin

[Default Password]:admin



You can copy the video from your TF card to your computer and play back the video.



The following data are for reference only.  
The following is the number of cameras used in different types of routers.

Condition: 16Fps

Unit: pieces

	1280*720	704*576	352*288	176*144
<b>Ordinary home wireless router</b>	<b>1</b>	<b>2</b>	<b>6</b>	<b>8</b>
<b>Commercial wireless router</b>	<b>6</b>	<b>7</b>	<b>8</b>	<b>9</b>

Condition: 25Fps

Unit: pieces

	<b>1280*720</b>	<b>704*576</b>	<b>352*288</b>	<b>176*144</b>
<b>Ordinary home wireless router</b>	<b>1</b>	<b>3</b>	<b>4</b>	<b>8</b>
<b>Commercial wireless router</b>	<b>4</b>	<b>7</b>	<b>8</b>	<b>10</b>

The following is the relationship between memory card size and recording time. The size of video file is related with the motion of the video.

Condition: 16Fps

Unit: hours

	<b>2G</b>	<b>4G</b>	<b>8G</b>	<b>16G</b>	<b>32G</b>
<b>1280*720</b>	<b>2</b>	<b>5</b>	<b>11</b>	<b>22</b>	<b>44</b>
<b>704*576</b>	<b>4</b>	<b>8</b>	<b>17</b>	<b>34</b>	<b>68</b>

Condition: 25Fps

Unit: hours

	<b>2G</b>	<b>4G</b>	<b>8G</b>	<b>16G</b>	<b>32G</b>
<b>1280*720</b>	<b>1</b>	<b>3</b>	<b>6</b>	<b>12</b>	<b>24</b>
<b>704*576</b>	<b>3</b>	<b>6</b>	<b>12</b>	<b>24</b>	<b>48</b>

## **Wifi router supply:**

**1.FR-WR1046AC-C : 750Mbps    rmb : 121    ;    Two Frequency:2.4G/5G**

**2.4G:300mbps**

**2.WR8305RT-B : 300Mbps    rmb : 124 ;**

**3. TL-WVR1750G:1750Mbps    rmb:999    ;    Two Frequency:2.4G/5G**

**2.4G:450mbps**

**FCC Caution:** Any changes or modifications not expressly approved by the party responsible for compliance could void the user's authority to operate this equipment.

This device complies with Part 15 of the FCC Rules. Operation is subject to the following two conditions: (1) This device may not cause harmful interference, and (2) this device must accept any interference received, including interference that may cause undesired operation.

This device and its antenna(s) must not be co-located or operating in conjunction with any other antenna or transmitter.

NOTE: This equipment has been tested and found to comply with the limits for a Class B digital device, pursuant to Part 15 of the FCC Rules.

These limits are designed to provide reasonable protection against harmful interference in a residential installation. This equipment generates, uses and can radiate radio frequency energy and, if not installed and used in accordance with the instructions, may cause harmful interference to radio communications.

However, there is no guarantee that interference will not occur in a particular installation.

If this equipment does cause harmful interference to radio or television reception, which can be determined by turning the equipment off and on, the user is encouraged to try to correct the interference by one or more of the following measures:

- Reorient or relocate the receiving antenna.
- Increase the separation between the equipment and receiver.
- Connect the equipment into an outlet on a circuit different from that to which the receiver is connected.
- Consult the dealer or an experienced radio/TV technician for help.

This equipment should be installed and operated with minimum distance 20cm between the radiator and your body.