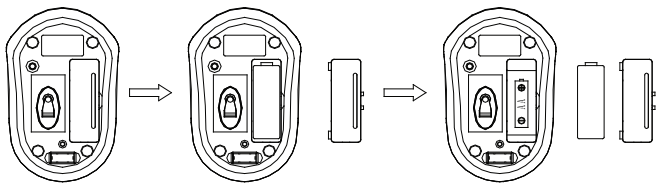


Installing the Batteries

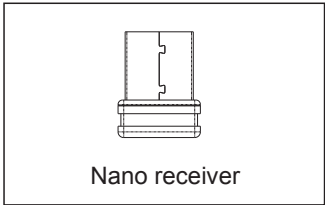
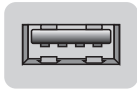
The RF2.4GHz Optical mouse use one AA alkaline batteries.

Installing Batteries in the Mouse

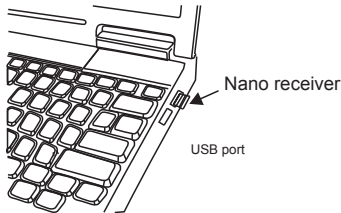
- Step 1.Open the battery compartment
- Step 2.Insert the batteries as shown inside the battery compartment.
- Step 3.Replace the cover.



Connecting thw Receiver

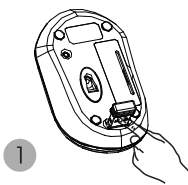


- 1.Connect the USB plug to USB port of your computer.

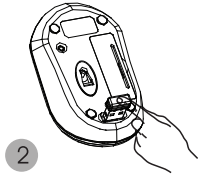


Abtain the receiver on the mouse

- 1:when you want use the mouse ,you can take out the receiver to computer by the list 1 step;
- 2:when you need stop the work or to travel, you can store the receiver on the mous for the moving by the list 2 step.



Take out the recaiver



Store the receiver

Power-Save function:

* This mouse is equipped with Traveling-Power-Save function. When you are traveling with this mouse,the LED of the mouse will be switched off automatically for the purpose of power-save,but the pre-condition is that the receiver is disconnected with your notebook or PC.

*Your RF2.4GHz mouse have economize model,When your wireless mouse keeps unused for continuous 8 minutes, the mouse will come to deep sleep mode, the Optical LED will turn off, you should click any mouse button to wake up the mouse.

Restoring factory default settings:

When you find this set doesn't work, you can make the mouse in working condition by restoring the mouse back to factory default settings.

- 1: check the battery volume is normal; if the battery is used out, please replace new batteries. if the battery volume is normal, please take out the battery and insert again the battery into the mouse.
- 2: insert the nano receiver onto the USB port of PC or notebook, make sure that the mouse is close to the receiver for auto-matching.

FCC STATEMENT:

This device complies with Part 15 of the FCC Rules. Operation is subject to the following two conditions:

- (1) This device may not cause harmful interference, and
- (2) This device must accept any interference received, including interference that may cause undesired operation.

Warning: Changes or modifications not expressly approved by the party responsible for compliance could void the user's authority to operate the equipment.

NOTE: This equipment has been tested and found to comply with the limits for a Class B digital device, pursuant to Part 15 of the FCC Rules. These limits are designed to provide reasonable protection against harmful interference in a residential installation.

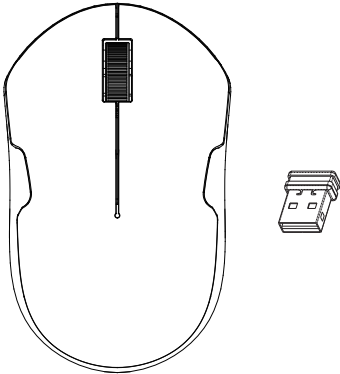
This equipment generates uses and can radiate radio frequency energy and, if not installed and used in accordance with the instructions, may cause harmful interference to radio communications. However, there is no guarantee that interference will not occur in a particular installation. If this equipment does cause harmful interference to radio or television reception, which can be determined by turning the equipment off and on, the user is encouraged to try to correct the interference by one or more of the following measures:

- Reorient or relocate the receiving antenna.
- Increase the separation between the equipment and receiver.
- Connect the equipment into an outlet on a circuit different from that to which the receiver is connected.
- Consult the dealer or an experienced radio/TV technician for help.

Model:SM-355AG

Instruction Manual

RF2.4GHz Optical Mouse



CAUTION:To use this device properly,please reed the user's guide before installation