



Seiko Instruments Inc.

8, Nakase 1-chome, Mihama-ku,
Chiba-shi, Chiba 261-8507, Japan
Tel: +81-43-211-1234

Declaration letter

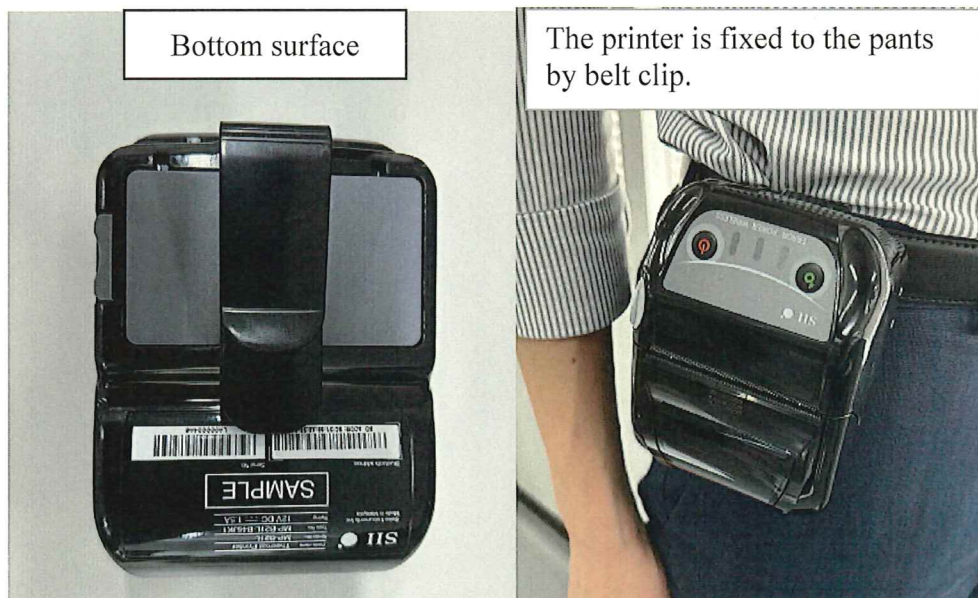
Subject: Regarding SAR Test position

The mobile printer MP-B21L-W46JK1U can be carried in the following two ways.
In these two portable methods, only the bottom surface of the printer is structurally close to the human body.

Since the mobile printer is such a fixing method, only the bottom surface is subject to SAR measurement.

However, based on the distance from the antenna to the human body, exclusion for SAR was evaluated.

(1) Belt Clip *Main mobile method (bundled with product)



(2) Shoulder Strap *Optional item

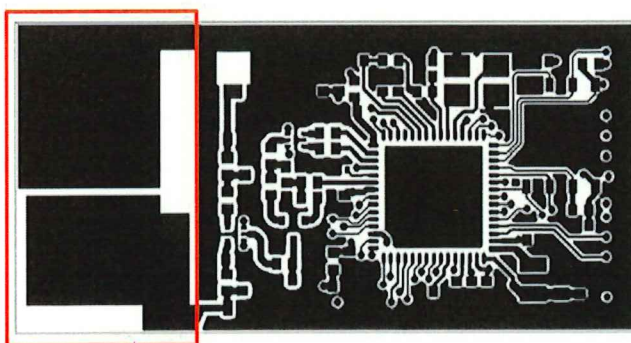


If you put a shoulder strap on the shoulder, the printer hangs down by its own weight.
Even if it hangs at any angle, the bottom side becomes the human body side on the structure.

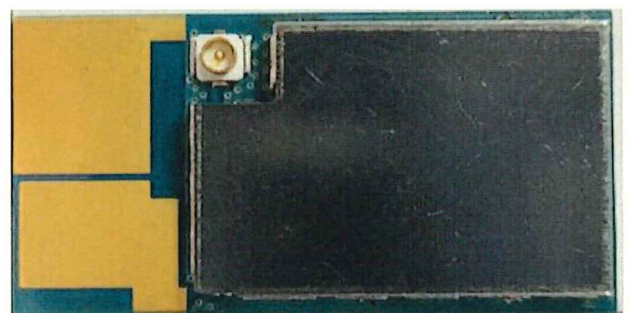
The shortest distance from the antenna to the bottom is as follows.

Antenna:

WLAN module Layer-Top



Antenna (pattern)

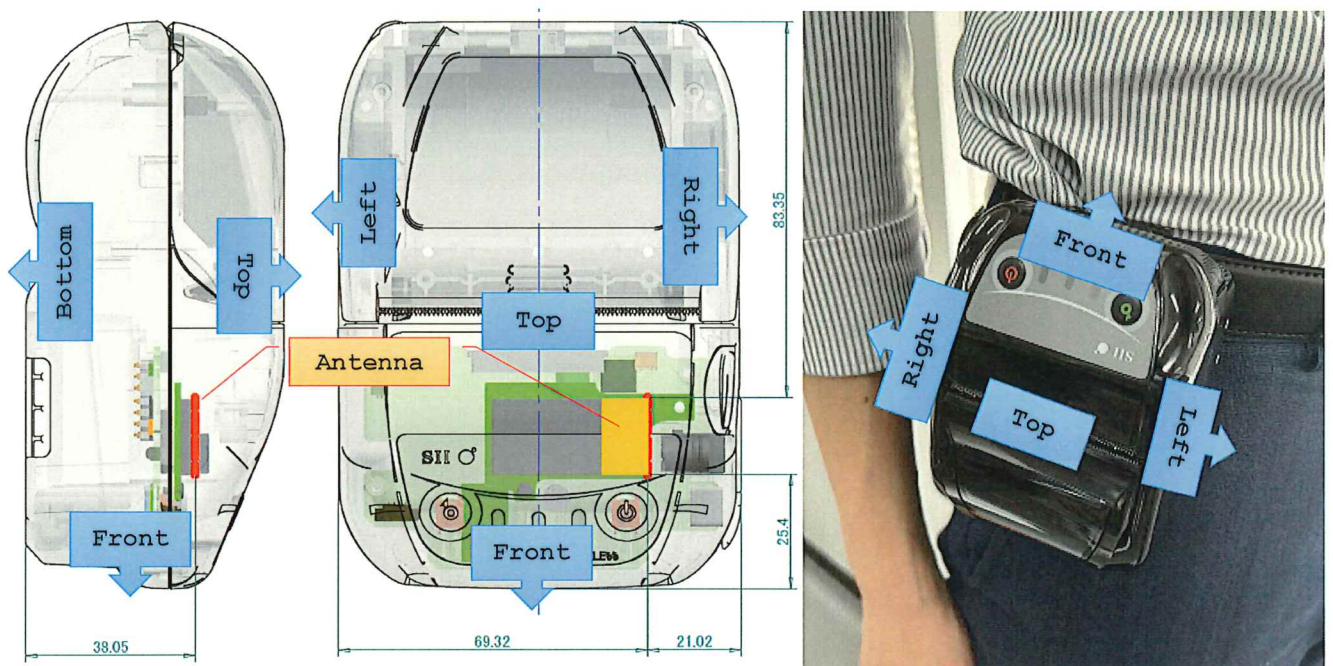




Seiko Instruments Inc.

8, Nakase 1-chome, Mihama-ku,
Chiba-shi, Chiba 261-8507, Japan
Tel: +81-43-211-1234

Distance from antenna to bottom



Best regards,

池沢 信一郎

Shinichiro Ikezawa
Corporate Quality Assurance Department
Seiko Instruments Inc.
April 10, 2024