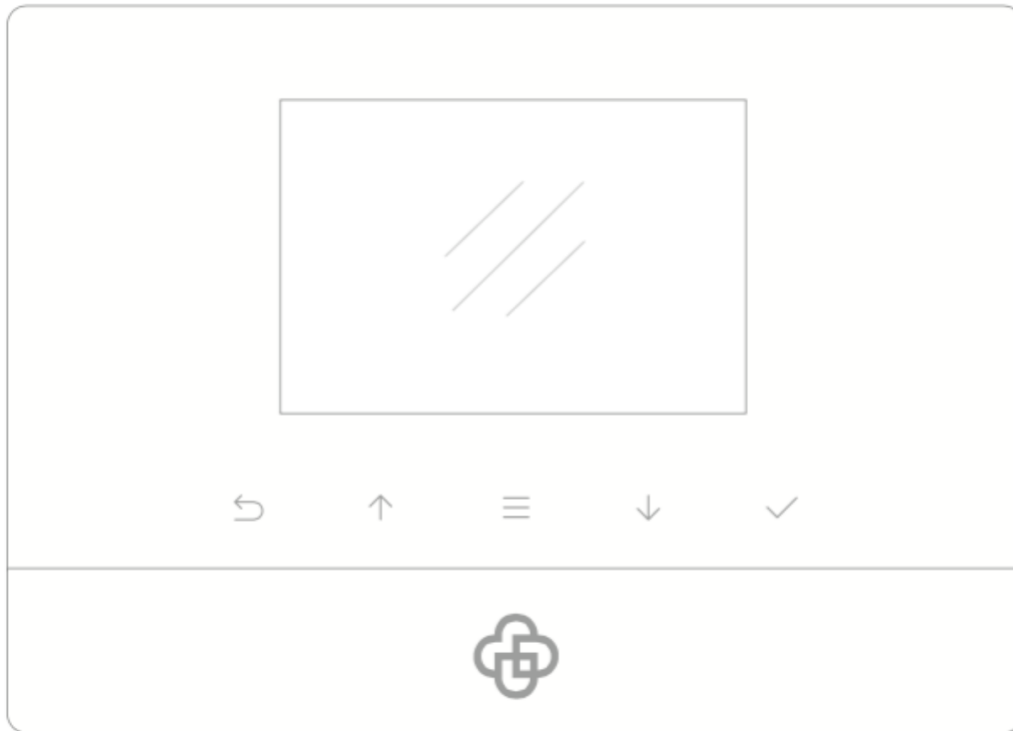


Welcome to **MatiGard™ Air**



Quick Guide

Designed for home and business security.

Easy to setup and use with Magictrl™.

Dinsafe™ Inc. , 2014

Getting Started

Power ON



Flip the switch on the back of the panel to the ON position. Replace the battery cover. Wait 20 seconds as the system runs a start-up diagnostic.

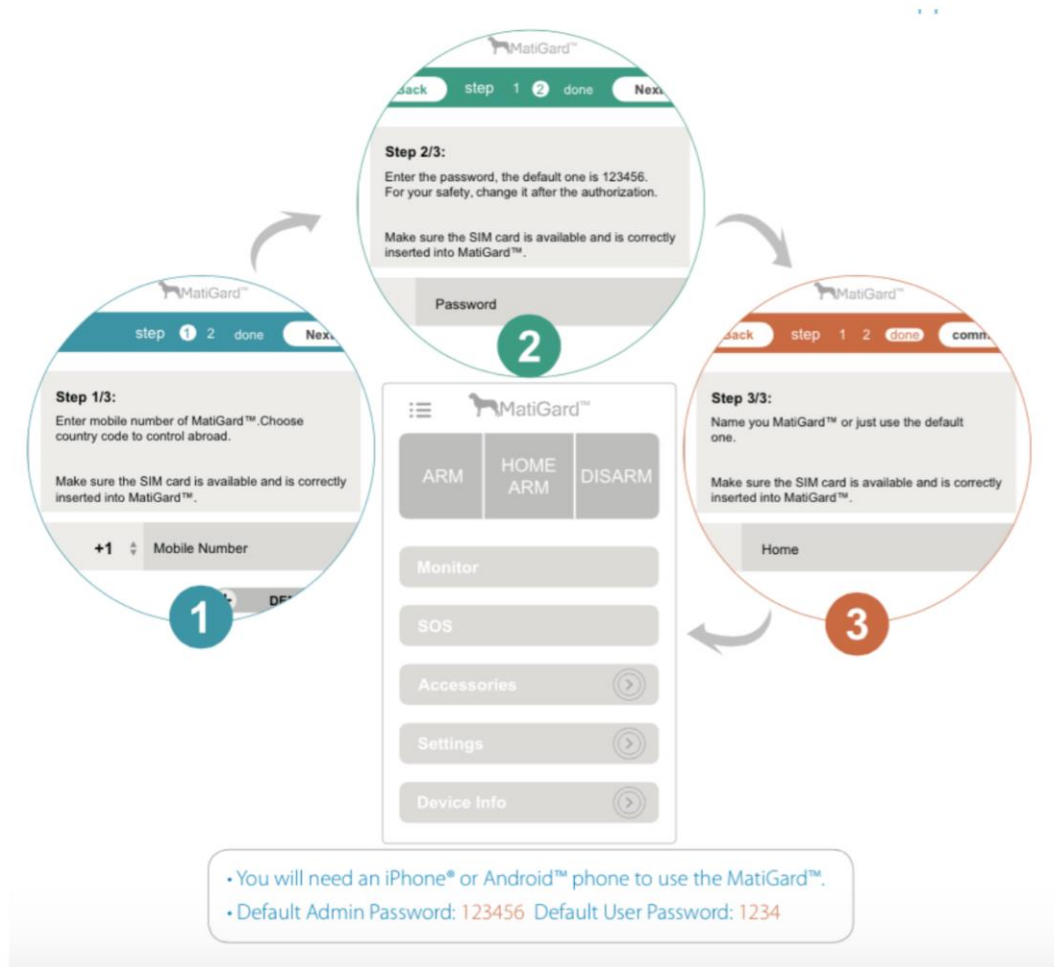
You will hear a confirmation when the test is complete. When you see the screen above the system is ready.

Start Using the Mobile Client, Magictrl™

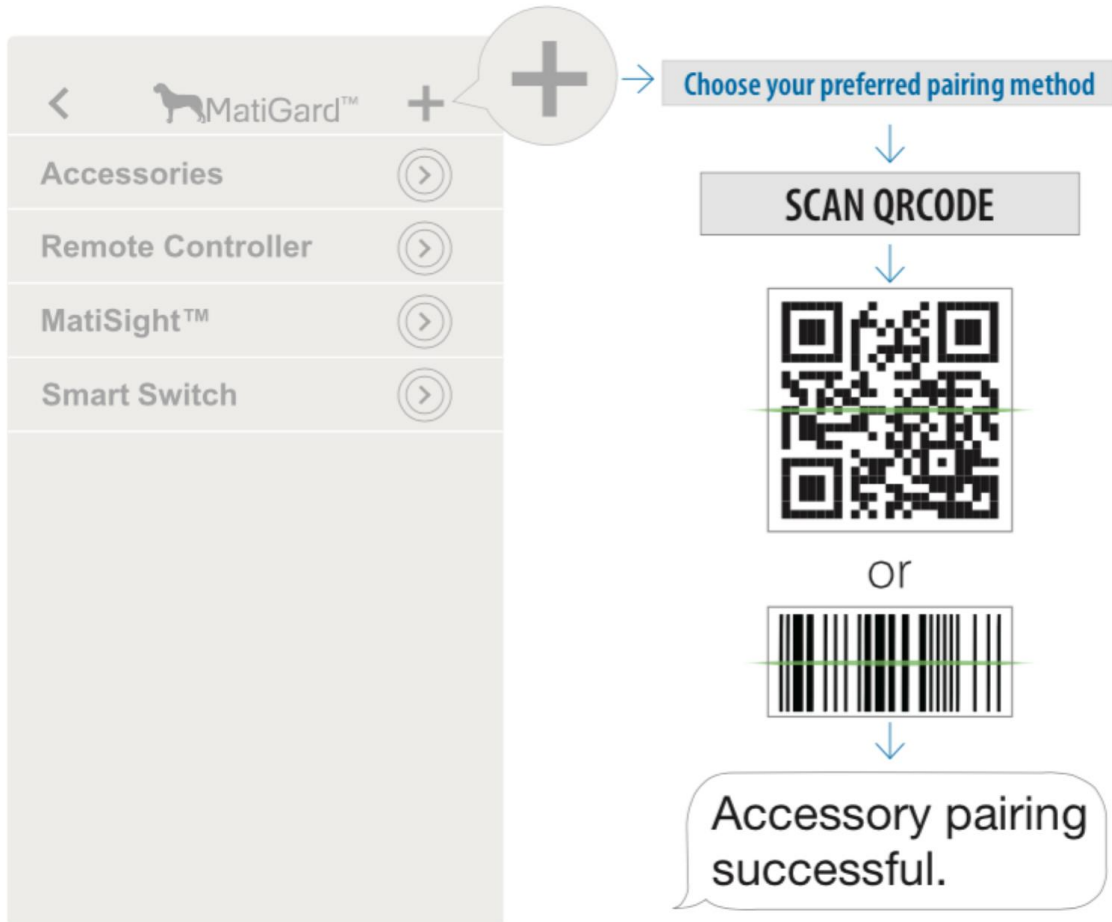
Download & Setup



1. Visit www.fortresssecuritystore.com/app or scan the QR-Code to the left.
2. Run the App and follow the on-screen instructions.



Pairing CONTACT SENSOR



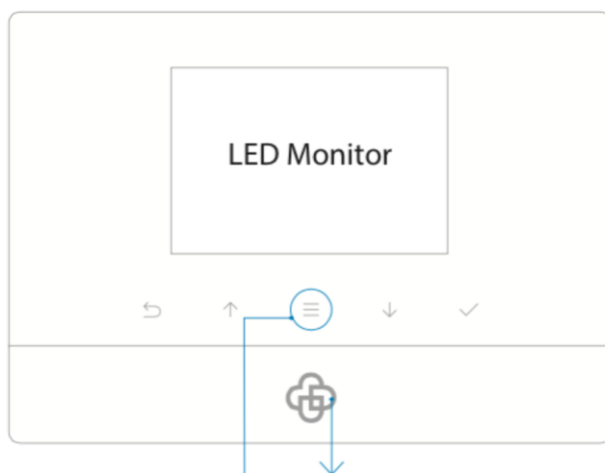
MatiGard™ uses a new pairing technology called non-trigger.

1. Press + button to scan the QR-Code/barcode on the CONTACT SENSOR to pair the CONTACT SENSOR with the panel.
2. Name the CONTACT SENSOR and save the setting to complete pairing.
3. The system will send out a pairing request and you will receive a confirmed text.
4. If needed, you can always modify or delete CONTACT SENSOR here.

MatiGard™ only supports the Dinsafe™ CONTACT SENSOR.





Daily Operations • Main Panel

Daily Operations • Main Panel



Control Button

Power Light & Delay Arming Button

- * Press  to enter the settings menu.
- * Press  to navigate.
- * Press  to select.
- * Press  to go back.

- * Power Light with Logo.
- * Long-press to activate delayed Arming.

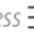
5

Delayed Arming means the system will wait a few seconds before going into ARM status. This allows you to leave your home without triggering the alarm. The delay time can be adjusted in the Magictrl™.

Child Lock



Lock: Long-press  for 6 seconds until the lock icon shows on screen.

Unlock: Long-press  for 6 seconds until the lock icon disappears.

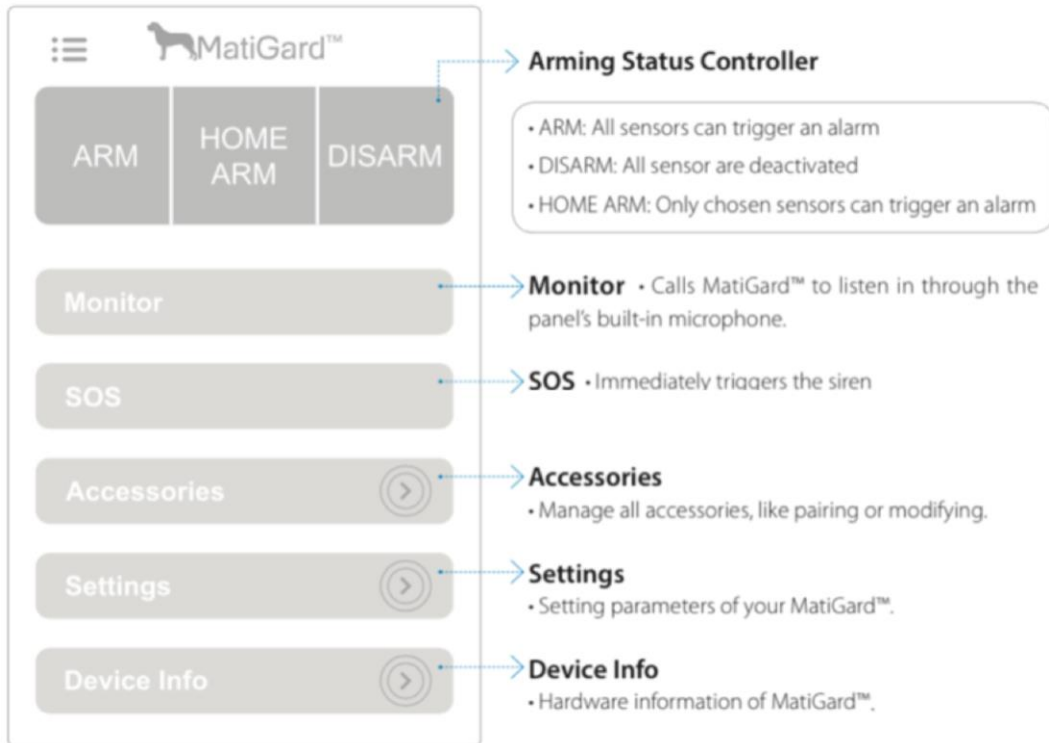
Knock over to trigger SOS



When an emergency occurs, just knock over the panel, the system will trigger an Emergency Alarm immediately.

The MatiGard™ uses MicroUSB as the power cable interface.
You can easily recharge it via any MicroUSB cable.

Daily Operations · Magictrl™ & Remote Controller



FAQ

1. Can I use non-Dinsafe™ branded CONTACT SENSOR with the MatiGard™?

Sorry, MatiGard™ only supports the Dinsafe™ CONTACT SENSOR.

1. The Dinsafe™ CONTACT SENSOR use encrypted communication protocols with patented technology. This makes them safer and more stable.
2. The Dinsafe™ CONTACT SENSOR are easily paired with the system just by scanning QR codes or Bar codes. All of our CONTACT SENSOR support low-battery warning. Non-Dinsafe™ branded CONTACT SENSOR might in some cases be able to pair with the MatiGard™, but stability cannot be guaranteed. We highly advise against using non-Dinsafe™ branded CONTACT SENSOR.

2. How can I get help with my MatiGard™ system.

1. Contact the local agency first to get the fastest support service.
2. Visit www.dinsafe.com and submit your question, or send us an email to

3. How can I reset my MatiGard™ system?

(If you lose your phone or get a new telephone number)

1. Power up your MatiGard™ panel.
2. Hold down the Reset button on the back of the panel until you hear 1 beep.
3. Continue holding the button for 6 seconds and you will hear 2 beeps.
4. The system is now Reset.

FCC Warning Statements:

1. This device complies with Part 15 of the FCC Rules. Operation is subject to the following two conditions:

(1) This device may not cause harmful interference, and

(2) This device must accept any interference received, including interference that may cause undesired operation.

2. Changes or modifications not expressly approved by the party responsible for compliance could void the user's authority to operate the equipment.

NOTE: This equipment has been tested and found to comply with the limits for a Class B digital device, pursuant to Part 15 of the FCC Rules. These limits are designed to provide reasonable protection against harmful interference in a residential installation. This equipment generates, uses and can radiate radio frequency energy and, if not installed and used in accordance with the instructions, may cause harmful interference to radio communications. However, there is no guarantee that interference will not occur in a particular installation. If this equipment does cause harmful interference to radio or television reception, which can be determined by turning the equipment off and on, the user is encouraged to try to correct the interference by one or more of the following measures:

- - Reorient or relocate the receiving antenna.
- - Increase the separation between the equipment and receiver.
- - Connect the equipment into an outlet on a circuit different from that to which the receiver is connected
- - Consult the dealer or an experienced radio/TV technician for help.