

# *Antenna Test Report*

*SHENZHEN KURUIJIE*

*Customer: 瑞科*  
*Project: T246F*

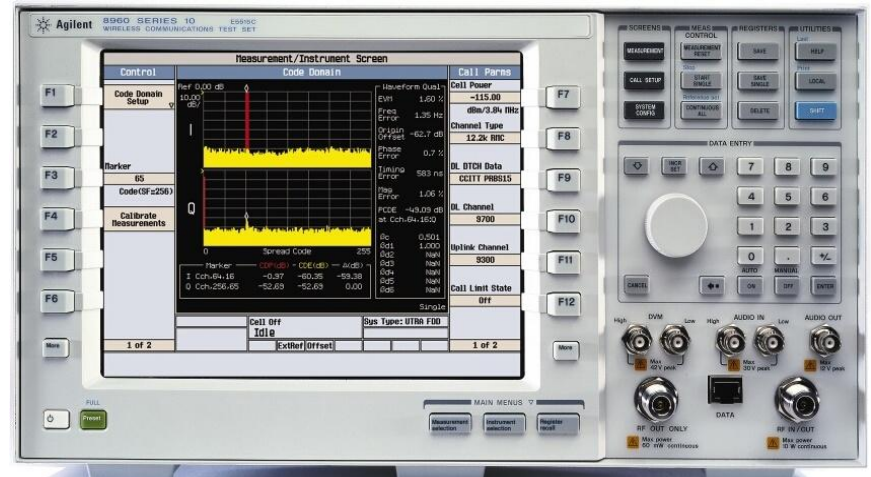
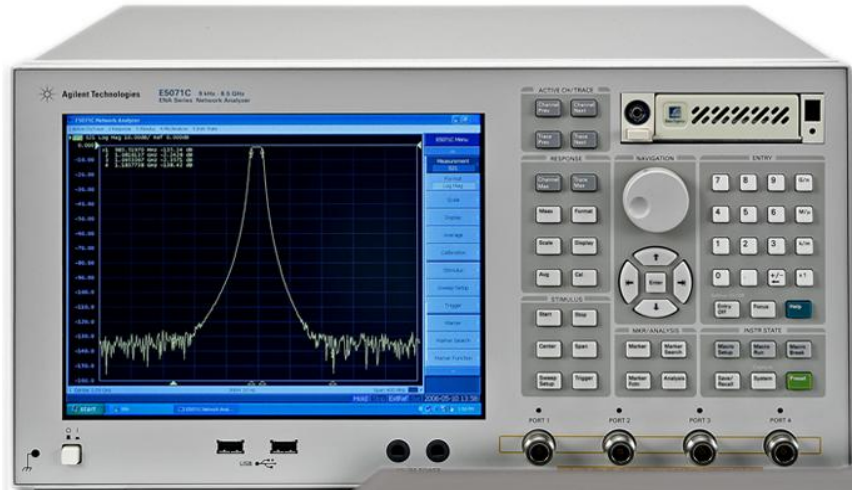
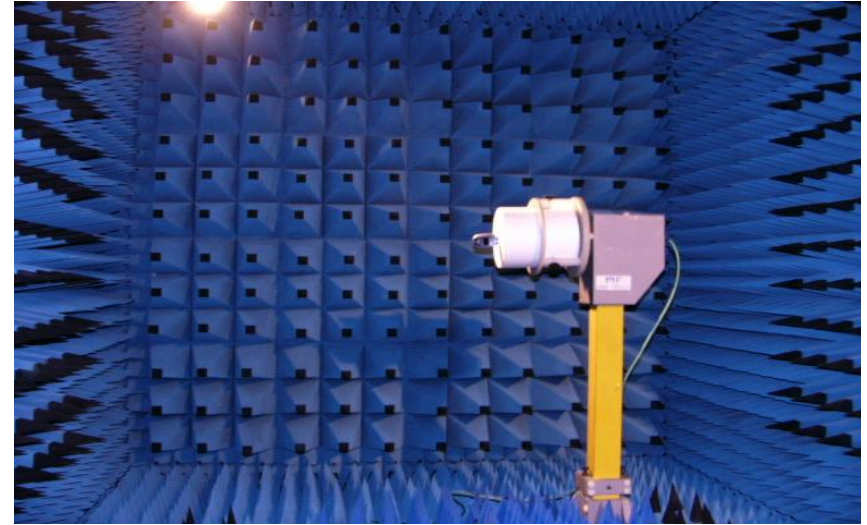
*RF Engineer: 安增侠*  
*Testing Date: 2022.09.30*

# **Index:**

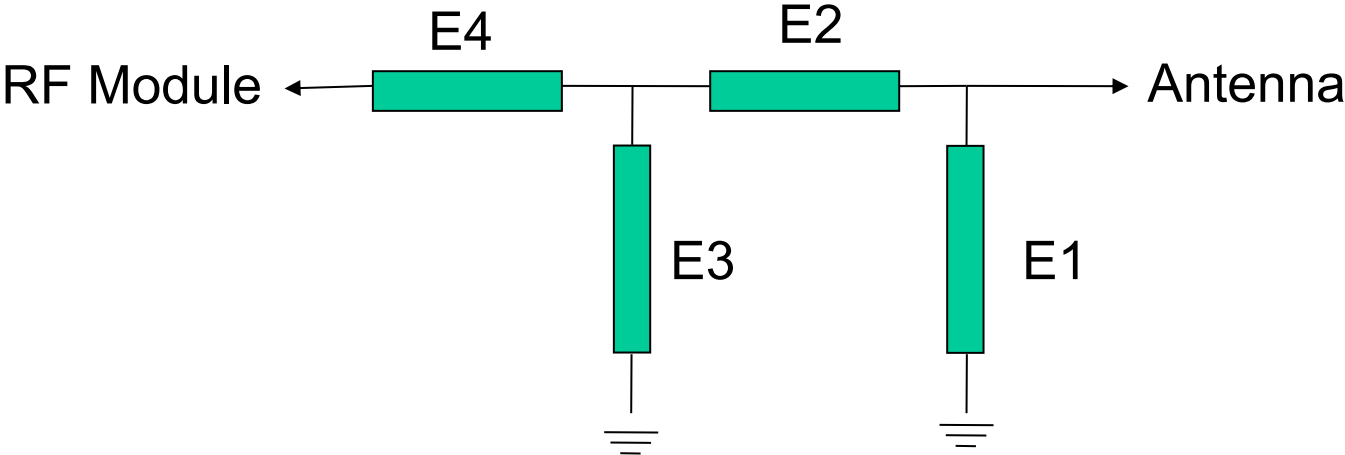
- 1. Testing Item & Equipments**
- 2. Matching Circuits**
- 3. Antenna Conditions**
- 4. Test Data**
- 5. GPS / WIFI / BT Test**

# 1. The Equipment of Active Test

- 1: Anechoic Chamber 7x4x3 m (3D)
- 2: Rohde & Schwarz CMW500
- 3: AGILENT 8960 5515C
- 4: Network Analyzer-AGILENT ENA5071B



# 2. Matching Circuits



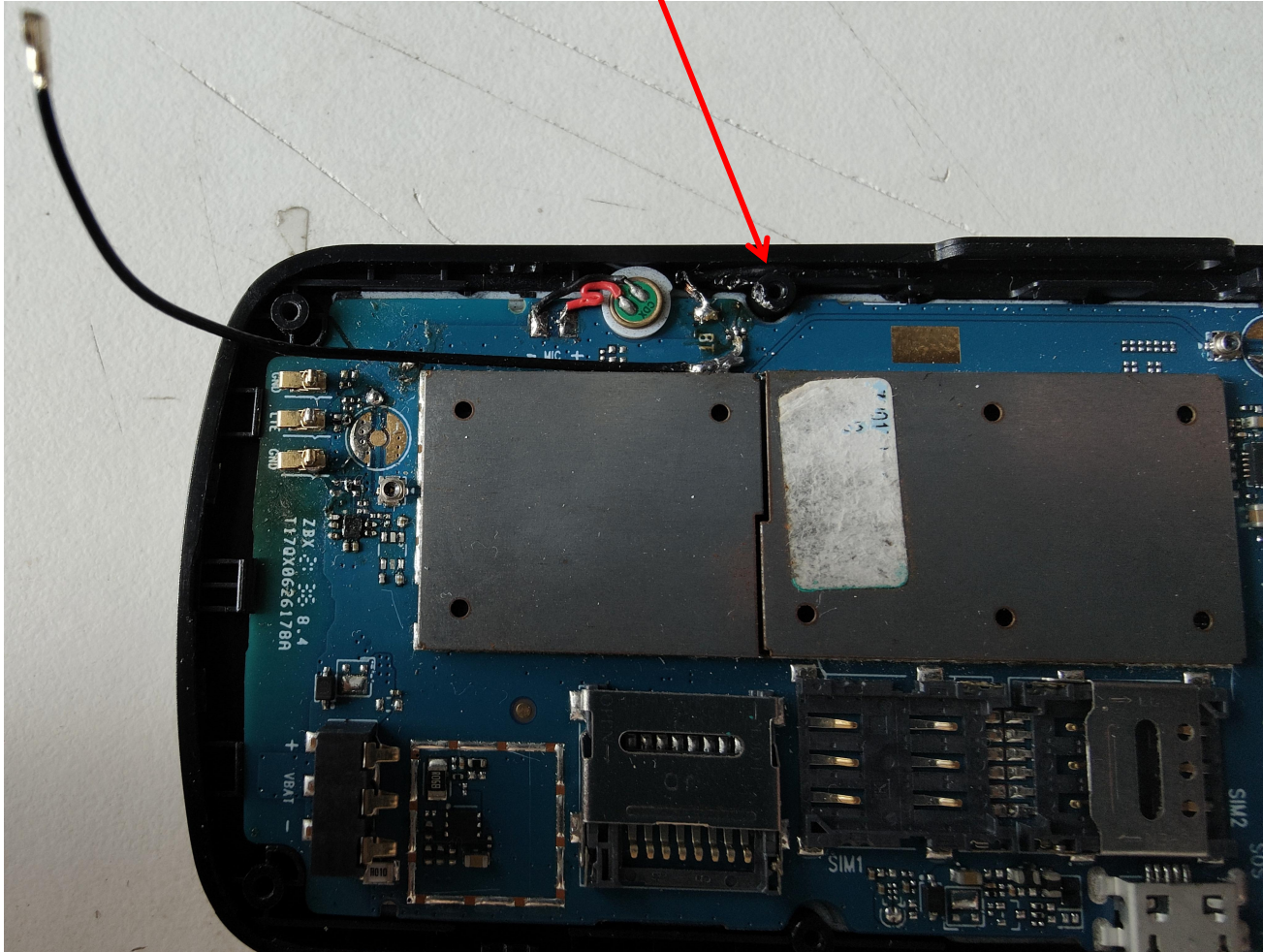
原版匹配

### *3. Antenna Profile*

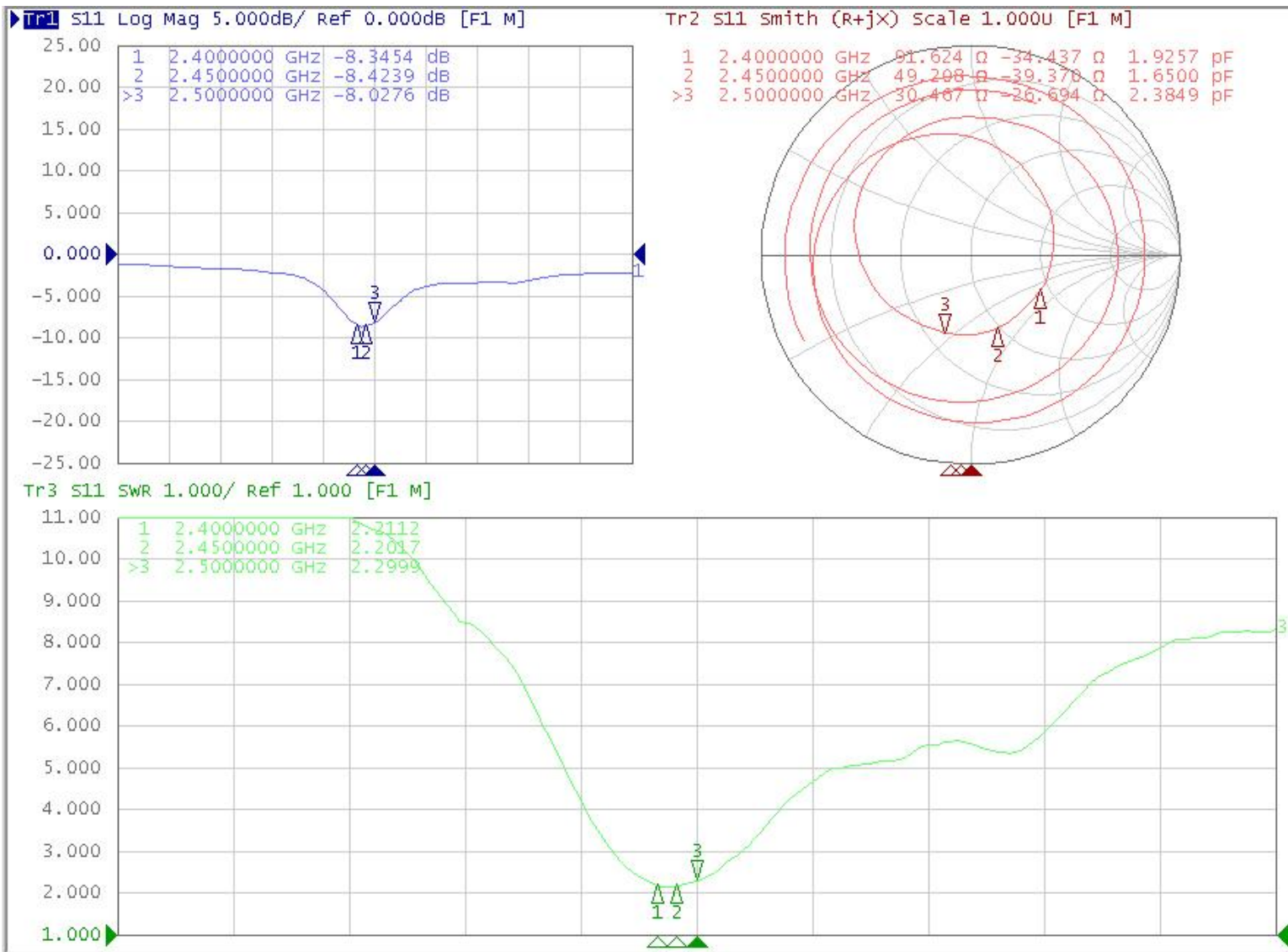
*Device*



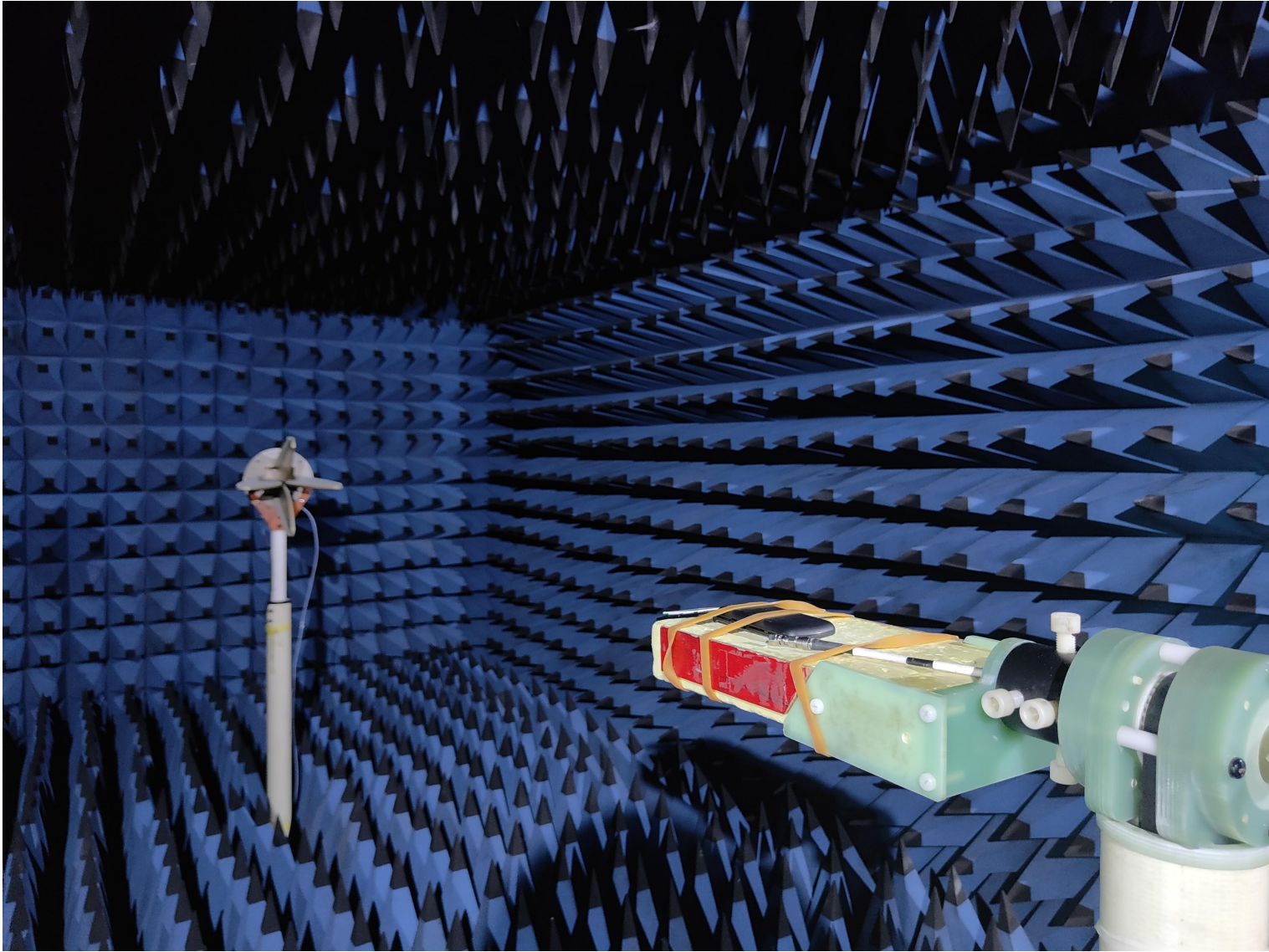
*BT Antenna*



# 4. Antenna Performance Test



## *5. Antenna Passive Test*

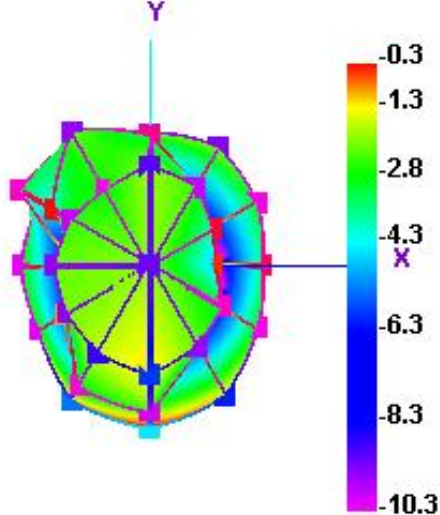




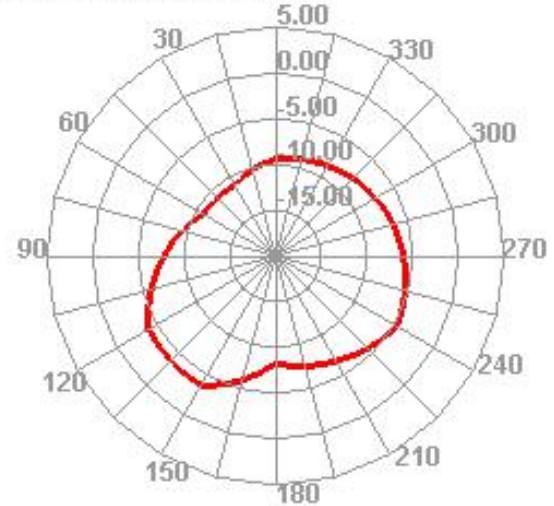
Passive Test For wifi2.4			
Freq (MHz)	Effi (%)	Effi (dB)	Gain (dBi)
2400	27.95	-5.21	-0.28
2410	24.62	-5.5	-0.47
2420	23.57	-5.74	-0.37
2430	25.72	-5.6	-0.21
2440	21.72	-5.99	-0.55
2450	22.67	-5.86	-0.04
2460	24.06	-5.68	-0.02
2470	25.65	-5.48	-0.49
2480	22.73	-5.85	-0.09
2490	22.54	-5.88	-0.12
2500	26.09	-5.43	-0.68

# Radiation Pattern For BT Antenna(2400MHz)

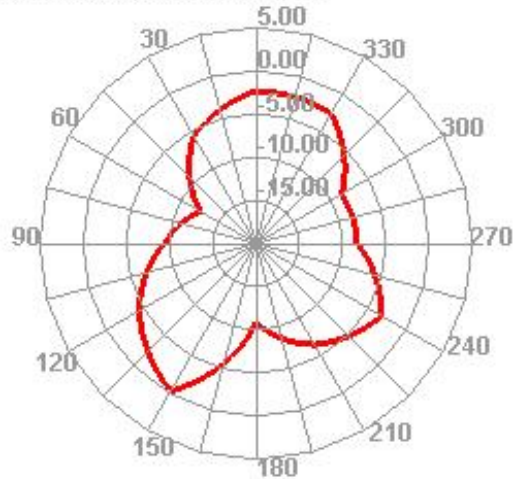
2400.000MHz



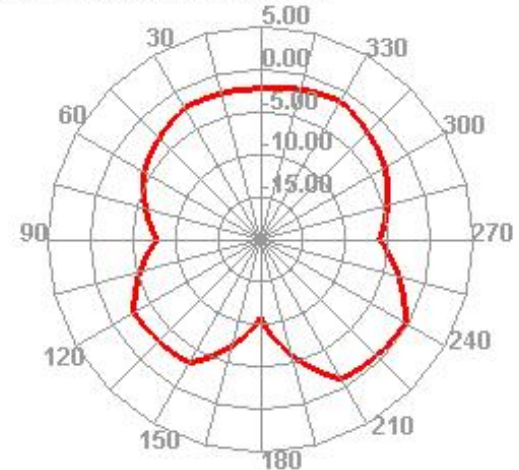
2400.000MHz H



2400.000MHz E1

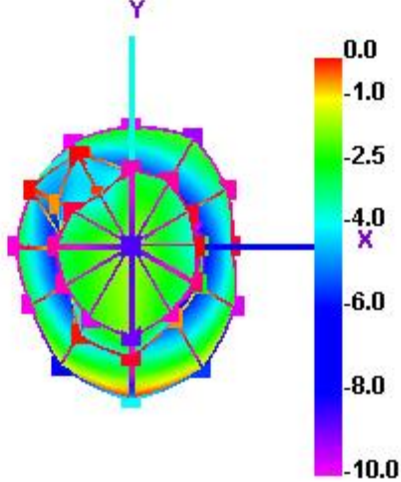


2400.000MHz E2

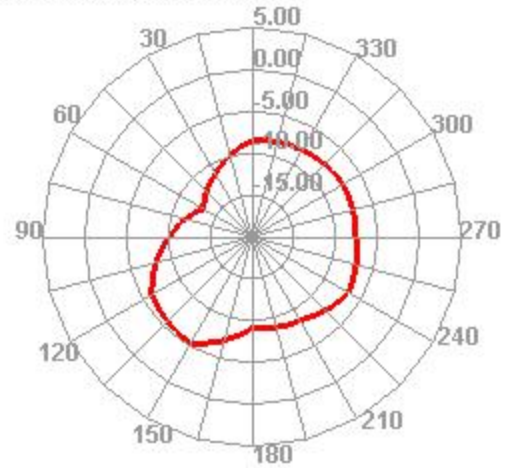


# Radiation Pattern For BT Antenna(2450MHz)

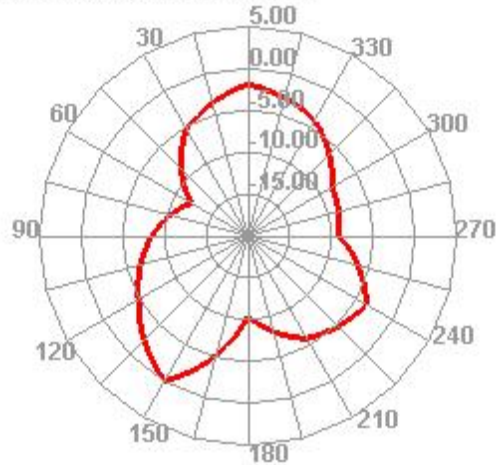
2450.000MHz



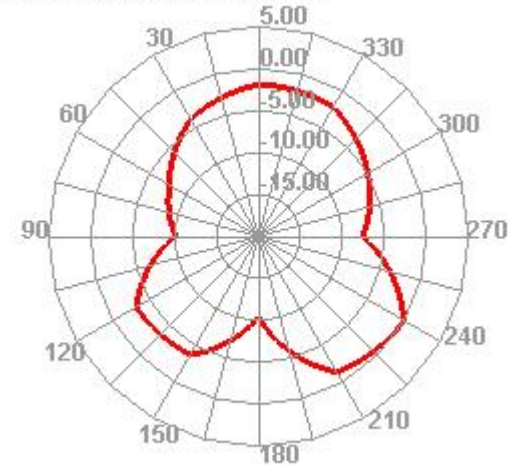
2450.000MHz H



2450.000MHz E1

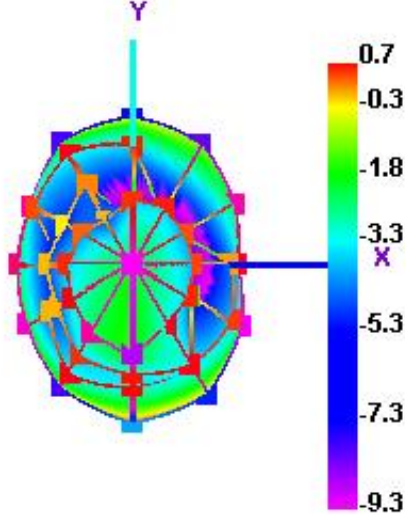


2450.000MHz E2

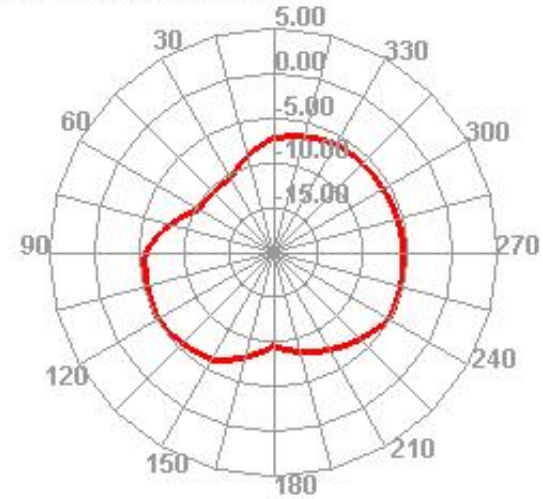


# Radiation Pattern For BT Antenna(2500MHz)

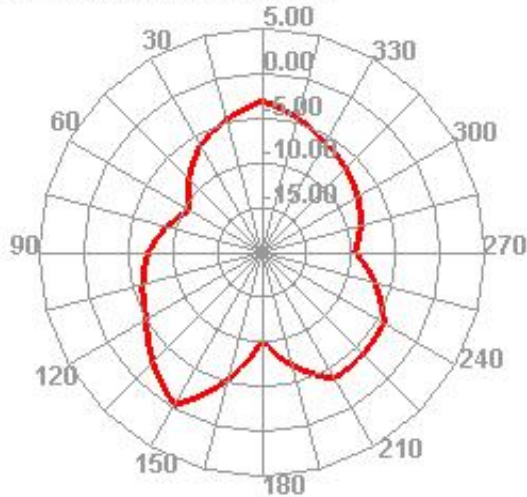
2500.000MHz



2500.000MHz H



2500.000MHz E1



2500.000MHz E2

