

# User Manual

Product: Access Point

Ver 1.0

## FCC Warning Statement

Changes or modifications not expressly approved by the party responsible for compliance could void the user's authority to operate the equipment. This equipment has been tested and found to comply with the limits for a Class B digital device, pursuant to Part 15 of the FCC Rules. These limits are designed to provide reasonable protection against harmful interference in a residential installation. This equipment generates uses and can radiate radio frequency energy and, if not installed and used in accordance with the instructions, may cause harmful interference to radio communications. However, there is no guarantee that interference will not occur in a particular installation. If this equipment does cause harmful interference to radio or television reception, which can be determined by turning the equipment off and on, the user is encouraged to try to correct the interference by one or more of the following measures:

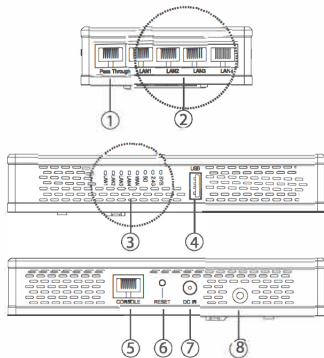
- Reorient or relocate the receiving antenna.
- Increase the separation between the equipment and receiver.
- Connect the equipment into an outlet on a circuit different from that to which the receiver is connected.
- Consult the dealer or an experienced radio/TV technician for help.

This device complies with part 15 of the FCC Rules. Operation is subject to the following two conditions: (1) This device may not cause harmful interference, and (2) This device must accept any interference receive including interference that may cause undesired operation.

### RF Exposure Statement

To maintain compliance with FCC's RF Exposure guidelines, This equipment should be installed and operated with minimum distance of 20cm the radiator your body.

## 1 Overview



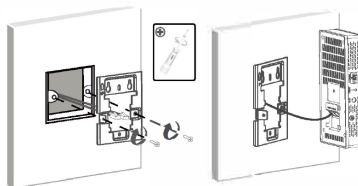
1. Pass Through
2. 10/100/1000 Mbps
3. LAN LED Indicator
4. USB
5. CONSOLE
6. RST
7. 12 VDC
8. Theft Protection

## 2 Mounting

You can mount the Access Point on Wall

### Router/AP Installation

Install the mounting plate into the wall socket by using M4 Screw (refer the image below). Connect the cable to WAN/PoE and pass through the port on the bottom side of AP.



## 3 Connection

Connect the Router/AP to the power supply (not included)

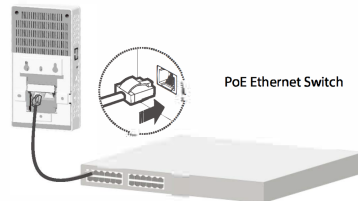
The Router/AP support a DC (not included) and 802.3af/at PoE power supply. Users can choose a suitable power supply type according to the actual network environment.

### 1. Check Before Powering ON

After installation, the below points need to be checked before power on the device: When using DC supply, make sure local AC power has good ground connection. When using PoE power supply, make sure PoE PSE has good ground connection.

### 2. PoE Power Supply

Connect PoE port of switch to PoE In port on bottom of Router/AP with LAN cable to provide PoE power supply to Router/AP. See the figure below.



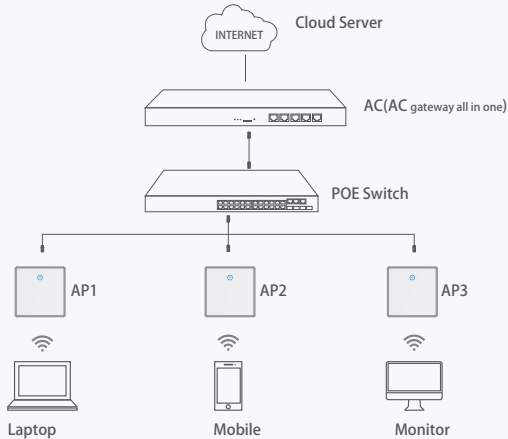
## 04 / Device management


### 4.1 Management from WEB UI

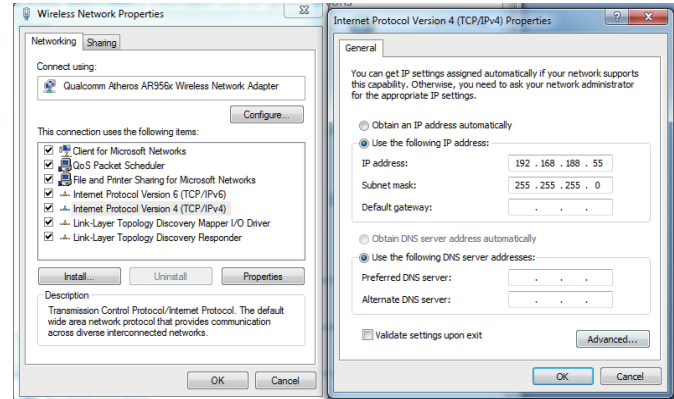
#### Connect PC by wireless

1. To connect an AP wirelessly, you need set the IP address of the TCP/IP properties of the wireless network card to 192.168.188.X (X is number range of 2-252) first, so that the AP and PC in the same IP segment, and set the subnet mask to 255.255.255.0, as shown in the following picture:

#### AC Gateway mode topology:

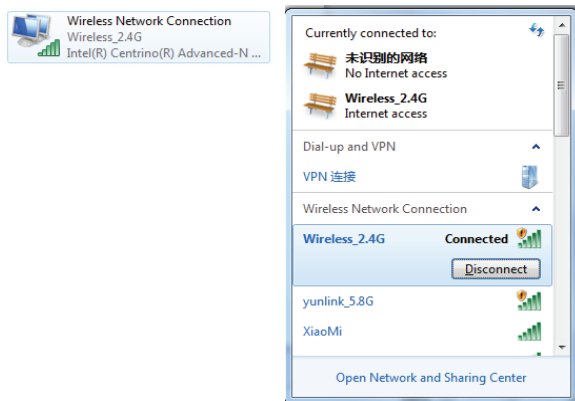


 Tips: If the AP supports 24V POE, pls use 24V PoE switch or POE adapter; if the AP is a standard 48V POE device, please use a standard IEEE802.3at POE switch or POE adapter. When deploy a large wireless network, there are many APs in this network, it is recommended to use a wireless AC controller in the network to centralized-manage all APs in the network.



Set PC wireless network card IP

2. After setting the IP address of PC, connect PC with AP in wireless, double-click "Wireless network Connection", in the pop-up wireless SSID list, select "Wireless 2.4G", click "Connect", then enter the password in the pop-up password dialogue box, the default password is "66666666", click "OK" to connect.



2.4GHz wireless connection

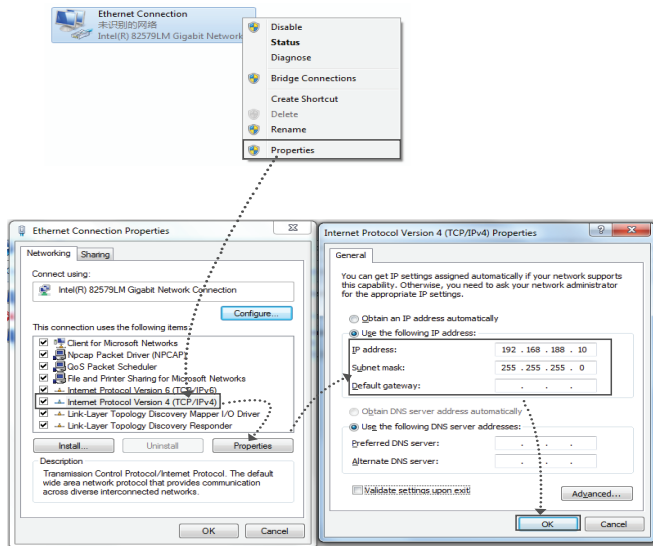
Or you can connect wireless Wi-Fi 5GHz. in the pop-up wireless SSID list, select "Wireless 5G", click "Connect", then enter the password in the pop-up password dialogue box, the default password is "66666666", click "OK" to connect.



5GHz wireless connection

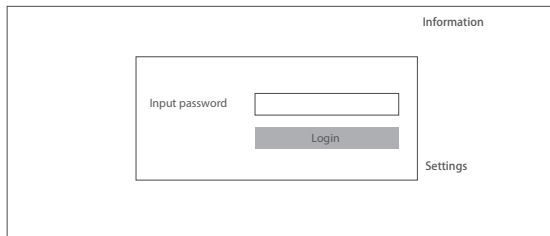
## Connect PC by wired port

Using the wired connection, set the IP address of the TCP/IP properties of the wired network card to 192.168.188.X (X is number range of 2---252), and the PC will be the same IP segment as AP.




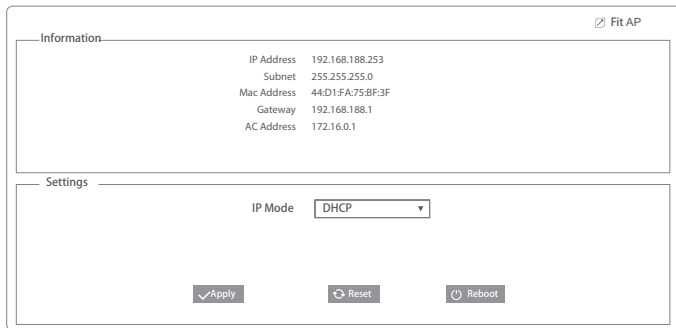
## 4.2 AP mode

1. Use Internet Explorer to visit <http://192.168.188.253>, pop up the login dialogue box shown in the following picture, input the default login password: admin, then press "Login" to enter the wireless AP's management user interface page.



A login dialog box with a white background and a thin black border. In the top right corner, the word "Information" is written in a small, grey font. In the bottom right corner, the word "Settings" is written in a small, grey font. The main area contains the text "Input password" on the left, followed by a white rectangular input field with a thin black border. Below the input field is a grey rectangular button with the word "Login" in white text.

2. By default it is in Fit AP mode, users need click the button  at the right corner to change it to FAT AP mode if needed.



The AP management interface is shown with a white background and a thin black border. In the top right corner, there is a button with a square icon containing a diagonal line and the text "Fit AP". The interface is divided into two main sections: "Information" and "Settings". The "Information" section has a thin black border and contains a table of network settings. The "Settings" section also has a thin black border and contains a dropdown menu for "IP Mode" and three buttons at the bottom: "Apply", "Reset", and "Reboot".

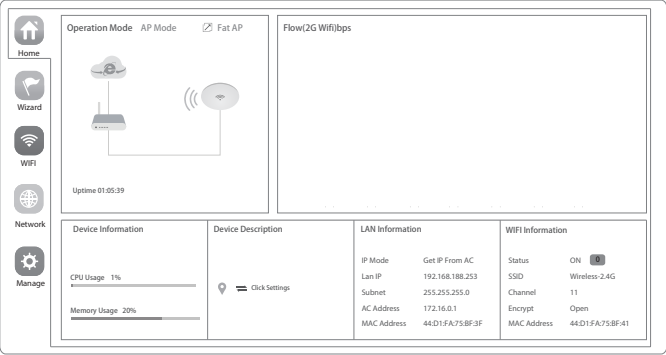
Information	
IP Address	192.168.188.253
Subnet	255.255.255.0
Mac Address	44:D1:FA:75:BF:3F
Gateway	192.168.188.1
AC Address	172.16.0.1

Settings

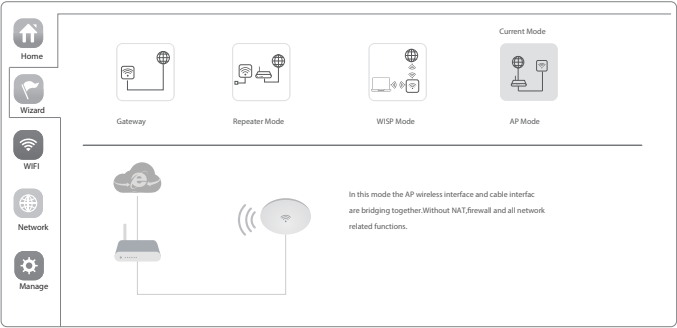
IP Mode DHCP ▼

✓ Apply ↺ Reset ⏻ Reboot

3.In FAT AP mode user interface home page is as shown below:



4.Setup Wizard page,choose AP mode as the current working mode.



5.Enter AP Mode setup page,choose “Get IP from AC” in connection type, click Next.

AP Mode

1

2

✓

LAN Settings

IP Mode

Get IP From AC

Static IP

Get IP From AC

Get IP From Gateway

Next

6.Enter Wifi setup page,set up SSID, Channel, Encryption parameters as shown below:

AP Mode

1

2

✓

2G WIFI Setting

Wifi Status

SSID

Wireless2.4G

Hide your SSID?

Channel

20M

Auto

Encrypt

Open

Timing

1 Day

Back

Next

2.4GHz  
set up

AP Mode

1

2

✓

5G WIFI Setting

Wifi Status

SSID

Wireless5G

Hide your SSID?

Channel

80M

Auto

Encrypt

Open

Timing

1 Day

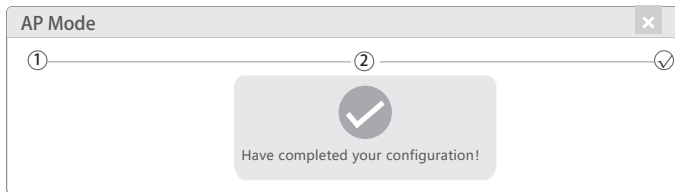
Back

Next

5GHz  
set up

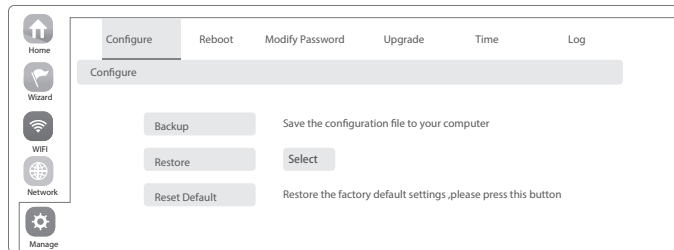


7. Click Next and setup completed




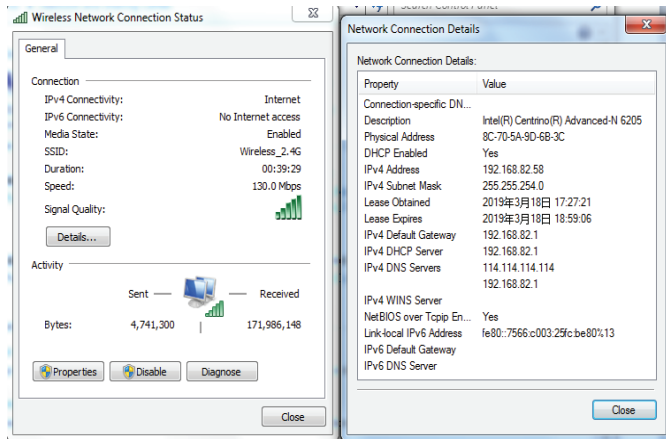
## 4.3 Device Management

Users can backup, reboot and reset to factory default settings through device management menu options. Also you can modify the WEB login password, upgrade firmware, time synchronization and system log statistics and other functional settings as shown in picture below.

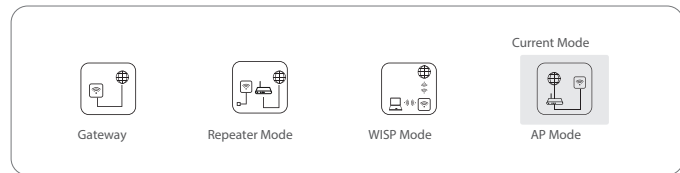


#### 4.4 Wireless testing

1. Use Laptop or mobile phone to test whether the wireless network can surf the Internet: click wireless network , select the wireless SSID, enter the password to connect the wireless AP, test whether you can surf the Internet.
2. Check the status of the wireless network connection: signal quality, speed, Bytes sent and received. Click on Details, check if the IP address and DNS server address etc. obtained correctly, confirm that the device is working properly.



#### 4.5 Other mode



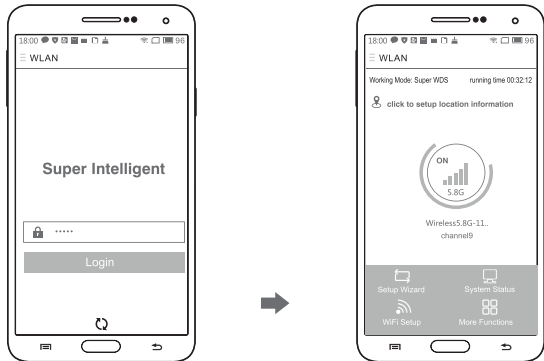
- **Gateway Mode**  
Realize router function, WAN port connect with modem (ADSL or Fiber), or WAN port connect internet by dynamic or static IP type.
- **Repeater mode**  
Realize wireless bridge and forwarding without compatibility matching with the upper device.
- **WISP Mode**  
Wireless ISP clients connect to the wireless base station by wireless, to realize local LAN internet connection sharing.
- **AP mode**  
Under AP mode, NAT, DHCP, firewall, and all WAN related functions are turned off, all wireless and wired interfaces are bridged together, no distinguishing between LAN and WAN.

#### Operation mode setup

Based on the Quick Setup Wizard for each mode shown in the above picture, Set the parameters and options that user needs, and click Next step until the settings for each operation mode are completed.

# 05/ Use mobile phone to login

- Mobile phone login web page of AP (default password is admin)



- Set static IP for mobile phone after connecting to AP:

## ①. How to set static IP for Android system mobile phone

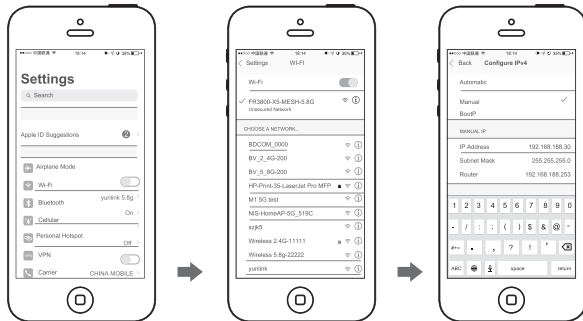
Open the phone click "settings", choose "WLAN", find and long press the SSID of the AP, pop-up menu select "Static IP", set a static IP 192.168.188.X (X can not be 253 or 252) (the static IP should be same IP segment as AP) for mobile phone, then input the right Gateway IP, network mask and DNS.

## ②. How to set static IP for IOS system mobile phone

Click "settings", choose "Wi-Fi", click exclamation mark ① after connect wireless signal successfully, setup the static IP 192.168.188.X(X can not be 253 or 252), then input gateway IP, subnet mask and DNS, please note: the static IP should be in the same IP segment as AP.



①. Android system setup steps



②. IOS system setup steps

# FAQ and Solutions

## **Q1: Forget login name and password ?**

**A1:** Reset to factory default settings: press the reset button for above 10 seconds and release it , the device will reboot and reset to factory default settings automatically.

## **Q2: Can not Login wireless AP management WEB interface ?**

**A2:** 1.Check if PC with static IP and if this IP is in the same IP segment of AP, make sure it is not set to other IP range.  
2.Reset AP to factory default settings and re-connect to AP.  
3.Make sure wireless AP IP address is 192.168.188.253 and not occupied by other devices .  
4.Check if there is something wrong with PC and Ethernet cable ,recommend to use CAT 5e or above UTP cable .


## **Q3: Forget wireless network password ?**

**A3:** 1.Connect AP by wired ,login WEB management interface ,click wireless settings----> basic settings---->Encryption  
---->Password, and set a new password for wireless network.  
2.Reset AP to factory default settings, the default password is 66666666.

## **Q4: Can not obtain IP Address ?**

**A4:** 1.In gateway or WISP mode, check if DHCP server is enabled  
2.In repeater or AP mode, check if upper network connection is normal ,or if LAN network DHCP server works well

## **Q5: How to change FIT AP to FAT AP ?**

**A5:** Switch FAT and FIT mode by clicking the button  at right corner ,then device will reboot .After rebooting, please clear history buffer files in IE and then login .

**NOTE:** Once the device is switched to FAT AP mode , AC controller will not be able to manage and control it .

## **Q6: AC controller device list can not get AP devices ?**

**A6:** The mode for AC controller and AP are different, AC controller with model prefixed AC is used to control FAT AP, the model prefixed in FAC or BW is used to control FIT AP .

**NOTE:** All the APs support both FAT and FIT AP mode , the default mode is FIT AP mode.

\*This manual is only used for instructions and provides an accurate information as we can , but we can not make sure all the information in this manual is correct.This manual may be updated because of the products upgrade,we have the right to revise the manual without any notice.